

SHEET NUM.											PART.	ITEM	ITEM	GRAND	UNIT	DESCRIPTION	SEE SHEET NO.
P.005	P.006	P.007	P.008	P.017	P.018	P.019	P.020	P.021	P.035	01/IMS/10	EXT	TOTAL					
															ROADWAY		
				18	951						LS 969	201 23000	LS 969		CLEARING AND GRUBBING	P.005	
				55							55	202 30700	55	FT	PAVEMENT REMOVED		
				26							26	202 32000	26	FT	CONCRETE BARRIER REMOVED		
				231							231	202 32500	231	FT	CURB AND GUTTER REMOVED		
						26					26	202 35100	26	FT	PIPE REMOVED, 24" AND UNDER		
											1,313	202 38000	1,313	FT	GUARDRAIL REMOVED		
				3							3	202 42010	3	EACH	ANCHOR ASSEMBLY REMOVED, TYPE E		
				4							4	202 42040	4	EACH	ANCHOR ASSEMBLY REMOVED, TYPE T		
				5							5	202 47000	5	EACH	BRIDGE TERMINAL ASSEMBLY REMOVED		
				2							2	202 47800	2	EACH	IMPACT ATTENUATOR REMOVED		
				4							4	202 53100	4	EACH	MAILBOX REMOVED		
								1,682	198		1,880	203 10000	1,880	CY	EXCAVATION		
								561	592		1,153	203 20000	1,153	CY	EMBANKMENT		
					1,539						1,539	204 10000	1,539	SY	SUBGRADE COMPACTION		
				625							625	606 15050	625	FT	GUARDRAIL, TYPE MGS		
				150							150	606 15550	150	FT	GUARDRAIL, BARRIER DESIGN, TYPE MGS		
				3							2	606 26150	3	EACH	ANCHOR ASSEMBLY, MGS TYPE E (MASH 2016)		
				7							6	606 26550	7	EACH	ANCHOR ASSEMBLY, MGS TYPE T		
				3							3	606 35002	3	EACH	MGS BRIDGE TERMINAL ASSEMBLY, TYPE 1		
				1							1	606 35102	1	EACH	MGS BRIDGE TERMINAL ASSEMBLY, TYPE 2		
				2							2	606 60012	2	EACH	IMPACT ATTENUATOR, TYPE 1 (BIDIRECTIONAL)		
					1,344						1,344	608 12000	1,344	SF	5" CONCRETE WALK		
								1,880			1,880	622 41100	1,880	FT	PORTABLE BARRIER, UNANCHORED		
				4							4	SPECIAL 69050100	4	EACH	MAILBOX SUPPORT SYSTEM, SINGLE	P.06	
		LS									LS	SPECIAL 69098400	LS		ITEM SPECIAL - CONSULTANT FOR CONCRETE QUALITY CONTROL INCLUDING TESTING AND INSPECTION	P.07	
	LS										LS	SPECIAL 69098400	LS		MISC.:WORK INVOLVING ASBESTOS CONTAINING MATERIALS	P.06	
															EROSION CONTROL		
50						4					54	601 21050	54	SY	TIED CONCRETE BLOCK MAT WITH TYPE 1 UNDERLAYMENT		
						62					62	601 23000	62	SY	ARTICULATING CONCRETE BLOCK REVETMENT SYSTEM, TYPE 1		
			15								15	616 10000	15	MGAL	WATER		
								1,121	280		1,401	659 00300	1,401	CY	TOPSOIL		
								10,393	2,518		12,911	659 10000	12,911	SY	SEEDING AND MULCHING		
									126		126	659 14000	126	SY	REPAIR SEEDING AND MULCHING		
									126		126	659 15000	126	SY	INTER-SEEDING		
								1.36	0.35		1.71	659 20000	1.71	TON	COMMERCIAL FERTILIZER		
								2.09	0.53		2.62	659 31000	2.62	ACRE	LIME		
								82	14		96	659 35000	96	MGAL	WATER		
											10,000	832 30000	10,000	EACH	EROSION CONTROL		
						79					79	836 10000	79	SY	SEEDING AND EROSION CONTROL WITH TURF REINFORCING MAT, TYPE 1		
															DRAINAGE		
						0.2					0.2	602 20000	0.2	CY	CONCRETE MASONRY		
25											25	605 13300	25	FT	6" UNCLASSIFIED PIPE UNDERDRAINS		
40											372	605 14000	372	FT	6" BASE PIPE UNDERDRAINS		
											40	605 31100	40	FT	AGGREGATE DRAINS		
25						30					55	611 00510	55	FT	6" CONDUIT, TYPE F FOR UNDERDRAIN OUTLETS		
											65	611 04600	65	FT	12" CONDUIT, TYPE C		
											33	611 04600	33	FT	12" CONDUIT, TYPE C, 706.1		
											2	611 98470	2	EACH	CATCH BASIN, NO. 2-2B		
											1	611 99574	1	EACH	MANHOLE, NO. 3		
1						2					3	611 99710	3	EACH	PRECAST REINFORCED CONCRETE OUTLET		

SHEET NUM.											PART.	ITEM	ITEM	GRAND	UNIT	DESCRIPTION	SEE SHEET NO.
P.007	P.008	P.009	P.010	P.017	P.018	P.019	P.020	P.021			01/IMS/10	ITEM	EXT	TOTAL			
PAVEMENT																	
16,427					248						16,427	254	01000	16,427	SY	PAVEMENT PLANING, ASPHALT CONCRETE (2" THICKNESS)	
					165						248	254	01000	248	SY	PAVEMENT PLANING, ASPHALT CONCRETE (3" THICKNESS)	
					218						165	301	56000	165	CY	ASPHALT CONCRETE BASE, PG64-22, (449)	
1,396					218						218	304	20000	218	CY	AGGREGATE BASE	
					135						1,531	407	10000	1,531	GAL	TACK COAT	
					51						51	441	50000	51	CY	ASPHALT CONCRETE SURFACE COURSE, TYPE 1, (448), PG64-22	
913					51						51	441	70300	51	CY	ASPHALT CONCRETE INTERMEDIATE COURSE, TYPE 2, (449)	
					229						913	442	20000	913	CY	ASPHALT CONCRETE SURFACE COURSE, 12.5 MM, TYPE A (448)	
					12						229	452	11010	229	SY	7" NON-REINFORCED CONCRETE PAVEMENT, CLASS QC 1P	
					19						12	609	18000	12	FT	COMBINATION CURB AND GUTTER, TYPE 3	
					197						19	609	24511	19	FT	CURB, TYPE 4-C, AS PER PLAN	P.004
2					197						197	609	26000	197	FT	CURB, TYPE 6	
											2	618	40600	2	MILE	RUMBLE STRIPS, SHOULDER (ASPHALT CONCRETE)	
TRAFFIC CONTROL																	
				12							12	626	00110	12	EACH	BARRIER REFLECTOR, TYPE 2 (BI-DIRECTIONAL)	
				19							19	626	00110	19	EACH	BARRIER REFLECTOR, TYPE 2 (ONE-WAY)	
							58.83				58.83	630	03100	58.83	FT	GROUND MOUNTED SUPPORT, NO. 3 POST	
							25				25	630	80100	25	SF	SIGN, FLAT SHEET	
							6				6	630	84900	6	EACH	REMOVAL OF GROUND MOUNTED SIGN AND DISPOSAL	
							3				3	630	86002	3	EACH	REMOVAL OF GROUND MOUNTED POST SUPPORT AND DISPOSAL	
							0.16				0.16	644	00100	0.16	MILE	EDGE LINE, 4"	
							0.08				0.08	644	00300	0.08	MILE	CENTER LINE, DOUBLE YELLOW	
							0.1				0.1	646	10000	0.1	MILE	EDGE LINE, 4"	
							0.05				0.05	646	10200	0.05	MILE	CENTER LINE, DOUBLE YELLOW	
STRUCTURES OVER 20 FOOT SPAN																	
																FOR HAM-74-1335 ESTIMATED QUANTITIES	P.044-P.045
MAINTENANCE OF TRAFFIC																	
	50										50	410	12000	50	CY	TRAFFIC COMPACTED SURFACE, TYPE A OR B	
	25										25	410	13000	25	CY	TRAFFIC COMPACTED SURFACE, TYPE C	
			500								500	614	11110	500	HOUR	LAW ENFORCEMENT OFFICER WITH PATROL CAR FOR ASSISTANCE	
		1,880									1,880	614	11630	1,880	FT	INCREASED BARRIER DELINEATION, ONE-WAY	
								4			4	614	12380	4	EACH	WORK ZONE IMPACT ATTENUATOR, 24" WIDE HAZARDS, (UNIDIRECTIONAL)	
											LS	614	12420	LS		DETOUR SIGNING	
	25										25	614	13000	25	CY	ASPHALT CONCRETE FOR MAINTAINING TRAFFIC	
								42			42	614	13310	42	EACH	BARRIER REFLECTOR, TYPE 1, BIDIRECTIONAL	
											38	614	13310	38	EACH	BARRIER REFLECTOR, TYPE 1, ONE-WAY	
								42			80	614	13350	80	EACH	OBJECT MARKER, ONE WAY	
											304	614	18010	304	SF	MAINTAINING TRAFFIC, MISC.: NON-REINFORCED CONCRETE LEVELING PAD, 6" THICK	
											12	614	18601	12	SNMT	PORTABLE CHANGEABLE MESSAGE SIGN, AS PER PLAN	P.09
								1,682			1,682	617	10101	1,682	CY	COMPACTED AGGREGATE, AS PER PLAN	P.011
INCIDENTALS																	
											LS	614	11000	LS		MAINTAINING TRAFFIC	
											18	619	16021	18	MNTH	FIELD OFFICE, TYPE C, AS PER PLAN	P.007
											LS	623	10000	LS		CONSTRUCTION LAYOUT STAKES AND SURVEYING	
											LS	624	10000	LS		MOBILIZATION	

GENERAL SUMMARY

DESIGN AGENCY
fishbeck

DESIGNER
JAL/JBT


REVIEWER
JPC 05/01/24

PROJECT ID
110563

SHEET TOTAL
P.016 | 103


REF NO.	SHEET NO.	STATION TO STATION				202	202	202	202	202	202	202	202	202	606	606	606	606	606	606	606	626	626	SPECIAL	
						PAVEMENT REMOVED SY	GUARDRAIL REMOVED FT	ANCHOR ASSEMBLY REMOVED, TYPE T EACH	ANCHOR ASSEMBLY REMOVED, TYPE E EACH	BRIDGE TERMINAL ASSEMBLY REMOVED EACH	CONCRETE BARRIER REMOVED FT	IMPACT ATTENUATOR REMOVED EACH	MAILBOX REMOVED EACH	CURB REMOVED FT	CURB AND GUTTER REMOVED FT	GUARDRAIL, TYPE MGS FT	GUARDRAIL, BARRIER DESIGN, TYPE MGS FT	ANCHOR ASSEMBLY, MGS TYPE E (MASH 2016) EACH	ANCHOR ASSEMBLY, MGS TYPE T EACH	MGS BRIDGE TERMINAL ASSEMBLY, TYPE 1 EACH	MGS BRIDGE TERMINAL ASSEMBLY, TYPE 2 EACH	IMPACT ATTENUATOR, TYPE 1 (BIDIRECTIONAL) EACH	BARRIER REFLECTOR, TYPE 2 (BI-DIRECTIONAL) EACH	BARRIER REFLECTOR, TYPE 2 (ONE-WAY) EACH	MAILBOX SUPPORT SYSTEM, SINGLE EACH
R-1	P.022	17+19.60	TO	18+53.30	LT																				
R-2	P.022	17+81.73	TO	18+53.13	RT																				
R-3	P.022	18+53.13	TO	18+67.60	RT																				
R-4	P.022	17+97.40	TO	18+83.20	LT		75	1		1															
R-5	P.022	18+36.50	TO	18+83.20	RT		37.5	1		1															
R-6	P.023	21+27.90	TO	22+32.10	RT		87.5		1	1															
R-7	P.023	21+28.40	TO	22+28.20	LT		87.5	1		1															
R-8	P.023	22+30.20			RT	1																			
R-9	P.037	721+46.00	TO	722+59.30	RT		162.5		1	1	54.5	0													
R-10	P.037	720+32.50	TO	724+01.40	LT/RT		625																		
R-11	P.037	721+81.50	TO	725+70.50	LT		237.5	1	1																
R-12	P.037	722+36.50	TO	722+61.90	RT	16.1																			
MB-1	P.022	17+56.00	LT																					1	
MB-2	P.022	17+58.00	LT																					1	
MB-3	P.023	22+26.70	LT																					1	
MB-4	P.023	23+09.00	RT																					1	
GR-1	P.022	18+09.17	TO	18+56.67	LT																				
GR-2	P.022	18+22.71	TO	18+55.17	RT																				
GR-3	P.023	21+61.83	TO	22+19.60	LT																				
GR-4	P.023	21+76.33	TO	22+68.43	RT																				
GR-5	P.037	719+45.13	TO	722+71.23	RT																				
GR-6	P.037	721+03.20	TO	722+71.75	RT																				
GR-7	P.037	721+96.70	TO	723+65.40	LT																				
GR-8	P.037	724+12.43	TO	726+63.42	LT																				
TOTALS CARRIED TO GENERAL SUMMARY						18	1313	4	3	5	55	2	4	26	231	625	150	3	7	3	1	2	12	19	4

ROADWAY SUBSUMMARY

DESIGN AGENCY

 DESIGNER
 JAL/JBT
 REVIEWER
 JPC 05/01/24
 PROJECT ID
 110563
 SHEET TOTAL
 P.017 103

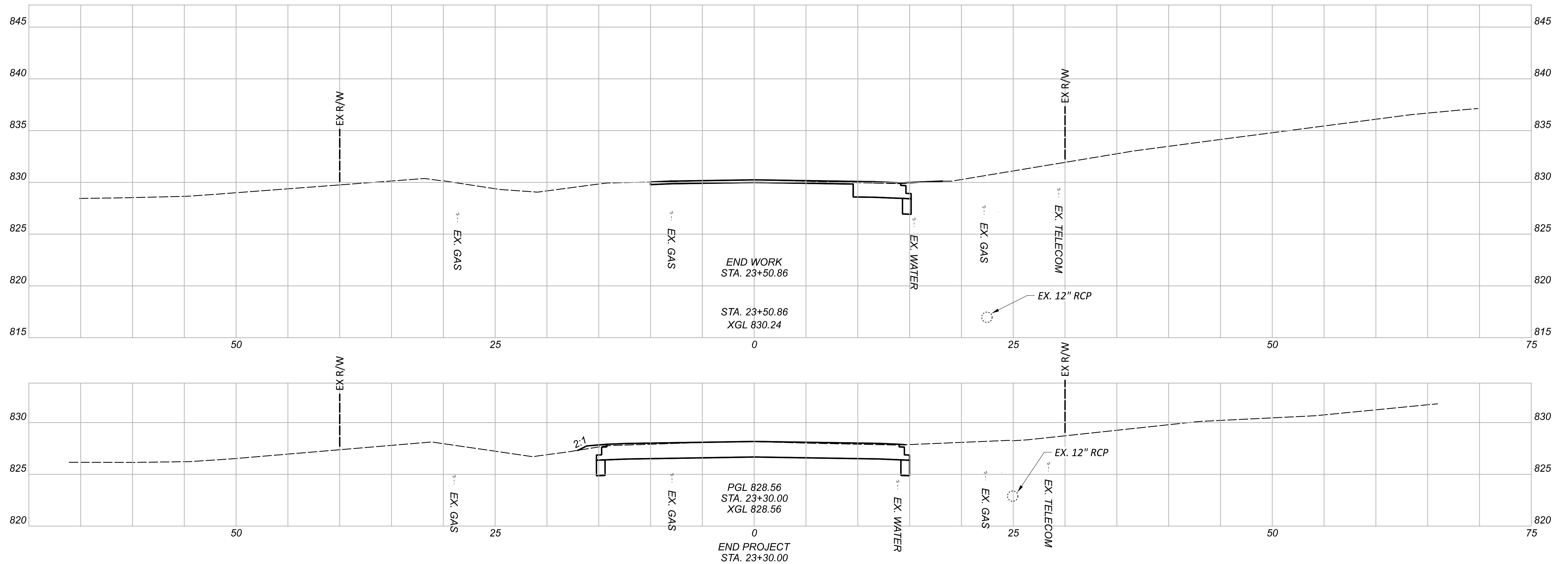
STATION RANGE			TYPICAL SECTION	SIDE	CADD GENERATED AREA		PAVEMENT REMOVED															
					FT	SY		SY	202	204	254	301	304	407	441	441	608	609	609	609	452	
								SUBGRADE COMPACTION	PAVEMENT PLANING, ASPHALT CONCRETE (3" THICKNESS)	ASPHALT CONCRETE BASE, PG64-22, (449)	AGGREGATE BASE	TACK COAT (APPLIED AT 0.055 GAL/SY x 2 APPLICATIONS)	ASPHALT CONCRETE SURFACE COURSE, TYPE 1, (448), PG64-22	ASPHALT CONCRETE INTERMEDIATE COURSE, TYPE 2, (449)	5" CONCRETE WALK	CURB, TYPE 6	COMBINATION CURB AND GUTTER, TYPE 3	CURB, TYPE 4-C, AS PER PLAN	7" NON-REINFORCED CONCRETE PAVEMENT, CLASS QC 1P			
18+00.88	TO	18+53.28		LT/RT	52.40	144.48	144.48															
17+19.55	TO	18+00.88		LT/RT		26.38	26.38															
17+52.97	TO	18+78.66		LT	125.69										691.30							
23+30.00	TO	23+50.86		RT	20.86	10.35	10.35															
21+56.95	TO	23+30.00		LT/RT	173.05	570.78	570.78															
17+19.55	TO	17+25.47		LT	5.92												6.00					
17+25.47	TO	18+52.66		LT	127.19											127.19						
17+81.73	TO	17+87.74		RT	6.01												6.00					
17+87.74	TO	18+34.50		RT	46.76											46.80						
18+34.50	TO	18+52.67		RT	18.17													18.17				
21+21.33	TO	22+40.96		LT		72.43									651.87							
21+64.33	TO	21+86.43		LT	22.10											22.10						
17+19.55	TO	18+00.88		LT	81.33	34.81		39.33		5.80	6.62	3.83	1.45	1.45								
17+19.55	TO	18+00.88		LT/RT	81.33	192.73			192.73			21.20	8.03	8.03								
18+00.88	TO	18+78.45		LT/RT	77.57	251.96		266.33		41.99	43.55	27.72	10.50	10.50								
18+78.45	TO	19+08.66		LT/RT	30.21	100.00		138.08			23.01											
20+91.33	TO	21+21.33		LT/RT	30.00	100.00		138.08			23.01											
21+21.33	TO	23+30.00		LT/RT	208.67	675.45		714.10		115.15	119.02	74.30	28.14	28.14								
23+30.00	TO	23+50.86		LT/RT	20.86	55.18			55.18			6.07	2.30	2.30								
23+30.00	TO	23+50.86		RT	20.86	10.35	10.35	14.22		2.05	1.85	1.14	0.43	0.43								
DRIVEWAYS																						
17+78.93				LT		73.35	73.35															
						84.27		84.27													84.27	
18+10.83				RT		55.26	55.26														44.99	
						44.99		44.99														
22+49.67				LT		31.55	31.55														68.95	
						68.95		68.95														
22+99.86				RT		27.73	27.73														30.30	
						30.30		30.30														
SUBTOTALS							950.23		1538.63	247.92	164.99	217.06	134.25	50.85	50.85	1343.17	196.09	12.00	18.17	228.51		
TOTALS CARRIED TO GENERAL SUMMARY							951		1539	248	165	218	135	51	51	1344	197	12	19	229		

PAVEMENT SUBSUMMARY

DESIGN AGENCY

 DESIGNER
 JAL/JBT
 REVIEWER
 JPC 05/01/24
 PROJECT ID
 110563
 SHEET TOTAL
 P.018 103

RACE ROAD EARTHWORK QUANTITIES TABLE

STA.	Cut Area (SF)	Fill Area (SF)	Seed Width (Ft)	Cut Vol. (CY)	Fill Vol. (CY)	Seed Area (SY)
17+19.55	14	0	0	0	0	0
17+50.00	13	0	0	15	0	0
18+00.88	44	1	10	54	1	28
18+50.00	33	6	14	70	6	65
18+76.45	9	5	0	21	5	21
19+08.66	0	0	0	5	3	0
20+95.00	0	0	0	0	0	0
21+25.00	42	0	0	23	0	0
21+50.00	0	155	38	19	72	53
21+87.00	0	139	28	0	202	136
22+00.00	8	131	38	2	65	48
22+04.88	7	73	42	1	18	22
22+15.00	3	98	43	2	32	48
22+50.00	9	9	51	8	69	183
22+74.88	20	9	19	13	8	97
22+80.00	24	5	16	4	1	10
23+00.00	35	1	4	22	2	22
23+30.00	43	0	4	43	1	13
23+50.86	12	0	1	21	0	6
SUBTOTALS				325	487	751
REDUCTION FOR PAVEMENT REMOVED				271	0	0
TOTALS CARRIED TO SEEDING AND MULCHING SUMMARY				54	487	751



CROSS SECTIONS - RACE RD
 STA. 23+25.00 TO STA. 23+50.86

I.R.-74 EARTHWORK QUANTITIES TABLE

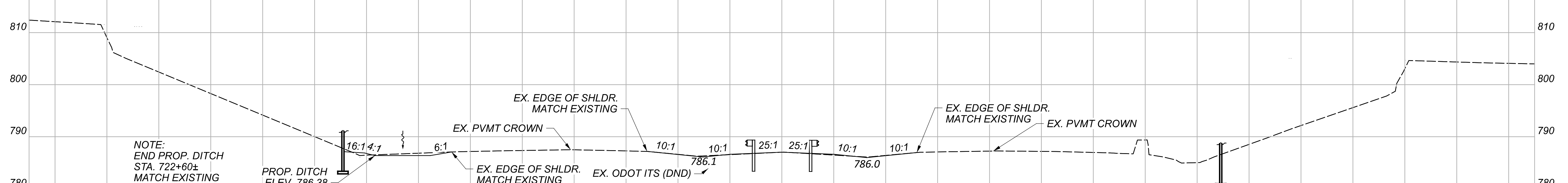
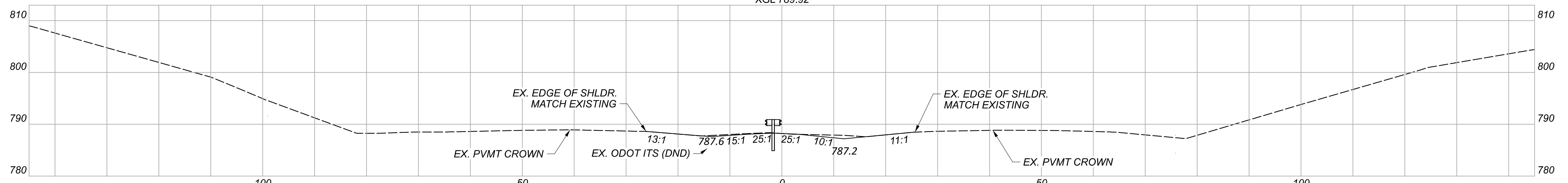
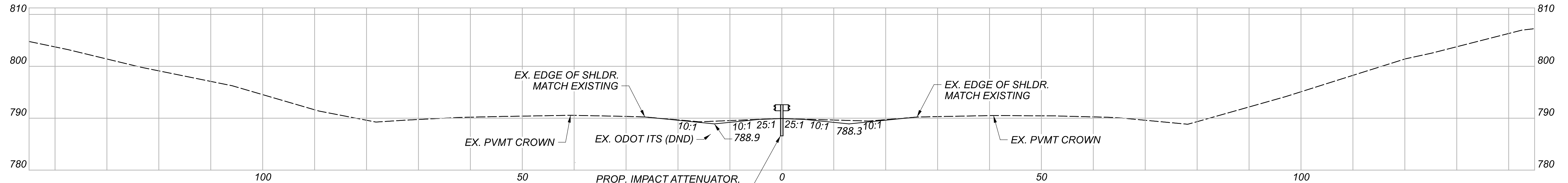
STA.	Cut Area (SF)	Fill Area (SF)	Seed Width (Ft)	Cut Vol. (CY)	Fill Vol. (CY)	Seed Area (SY)
721+05.00	3.6	1.5	52.0	0	0	0
721+50.00	1.0	0.8	52.0	11	6	260
722+00.00	1.8	13.4	74.6	8	39	352
722+10.00	4.9	12.8	92.5	4	15	93
722+20.00	9.3	12.0	92.6	8	14	103
722+30.00	10.4	9.0	92.6	11	12	103
722+40.00	9.2	5.2	88.7	11	8	101
722+50.00	6.4	2.4	73.0	9	4	90
723+00.00	6.2	0.2	52.0	35	7	347
723+55.00	9.4	0.0	52.6	48	1	320
TOTALS CARRIED TO SEEDING AND MULCHING SUBSUMMARY				144	105	1768

SEEDING AND MULCHING SUBSUMMARY

CARRIED FROM SHEET	203	203	659	659	659	659	659	659	659
	EXCAVATION	EMBANKMENT	TOPSOIL	SEEDING AND MULCHING	REPAIR SEEDING AND MULCHING	INTER-SEEDING	COMMERCIAL FERTILIZER	LIME	WATER
	CY	CY	CY	SY	SY	SY	TON	ACRE	MGAL
P.032	54	487	83.33	751	37.54	37.54	0.010	0.160	4.155
P.034	144	105	196.20	1768	88.38	88.38	0.240	0.370	9.784
TOTALS CARRIED TO GENERAL SUMMARY	198	592	280	2518	126	126	0.25	0.53	14

NOTES

1. THE CONTRACTOR SHALL PERFORM THE REGRADING AFTER THE REMOVAL OF ITEM 517. COMPACTED AGGREGATE HAS BEEN COMPLETED, SEE MOT SHEETS P.012 - P.013.
2. FOR MORE INFORMATION, SEE SHEET P.037.
3. FOR MORE GUARDRAIL INFORMATION, SEE SCD'S MGS-4.2, MGS-5.3, AND MGS-6.2.



CROSS SECTIONS - MEDIAN I.R.-74
STA. 722+50.00 TO STA. 723+55.00

DESIGN AGENCY
fishbeck

DESIGNER
JAL

REVIEWER
JAH 05/01/24

PROJECT ID
110563

SHEET TOTAL
P.035 | 103