



SHEET NUM.											PART.	ITEM	ITEM	GRAND	UNIT	DESCRIPTION	SEE SHEET NO.
5	13	14	15	16	84	88	89	97	98	131	01/CMQ/28	EXT	TOTAL				
																ROADWAY	
											LS	201	11000	LS		CLEARING AND GRUBBING	5
	3										3	202	20010	3	EACH	HEADWALL REMOVED	
	1,157		1,641								2,798	202	23000	2,798	SY	PAVEMENT REMOVED	
	421										421	202	30000	421	SF	WALK REMOVED	
	79										79	202	30800	79	SY	TRAFFIC ISLAND REMOVED	
	208		89								297	202	32000	297	FT	CURB REMOVED	
											52	202	32500	52	FT	CURB AND GUTTER REMOVED	
											76	202	35100	76	FT	PIPE REMOVED, 24" AND UNDER	
											1	SPECIAL	20252990	1	EACH	PARKING BLOCK REMOVED	
											1	SPECIAL	20253010	1	EACH	PARKING BLOCK REMOVED AND RESET	
											3	202	58100	3	EACH	CATCH BASIN REMOVED	
											211	202	75000	211	FT	FENCE REMOVED	
											6	202	98100	6	EACH	REMOVAL MISC.:REMOVE PRIVATE SIGN FOR SALVAGE	6
											941	203	10000	941	CY	EXCAVATION	
											1,424	203	20000	1,424	CY	EMBANKMENT	
			1,573								6,004	204	10000	6,004	SY	SUBGRADE COMPACTION	
9											9	204	45000	9	HOUR	PROOF ROLLING	
											197	607	23000	197	FT	FENCE, TYPE CLT	
											197	607	39996	197	FT	TEMPORARY VANDAL FENCE, TYPE C	
											710	607	36000	710	FT	FENCE MISC. BIKEWAY RAILING, TYPE RM-5.2	
											44,278	608	12000	44,278	SF	5" CONCRETE WALK	
											182	608	12001	182	SF	5" CONCRETE WALK, AS PER PLAN	6
											1,003	608	52000	1,003	SF	CURB RAMP	
											1	611	99654	1	EACH	MANHOLE ADJUSTED TO GRADE	6
											7	SPECIAL	61199700	7	EACH	GAS VALVE BOX ADJUSTED TO GRADE	6
											1	SPECIAL	69050350	1	EACH	MAILBOX REMOVED AND RESET	5
											3	SPECIAL	69050610	3	EACH	BOLLARD, HINGED	
											LS	878	25000	LS		INSPECTION AND COMPACTION TESTING OF UNBOUND MATERIALS	
																EROSION CONTROL	
											6.2	601	32300	6.2	CY	ROCK CHANNEL PROTECTION, TYPE D WITH FILTER	
536					6.2						655	659	00300	655	CY	TOPSOIL, FURNISHED AND PLACED	
4,821					119						4,821	659	00500	4,821	SY	SEEDING AND MULCHING, CLASS 1	
500											500	659	14000	500	SY	REPAIR SEEDING AND MULCHING	
0.43											0.43	659	20000	0.43	TON	COMMERCIAL FERTILIZER	
13											13	659	35000	13	MGAL	WATER	
											1,067	670	00500	1,067	SY	SLOPE EROSION PROTECTION	
											LS	832	15000	LS		STORM WATER POLLUTION PREVENTION PLAN	
											LS	832	15002	LS		STORM WATER POLLUTION PREVENTION INSPECTIONS	
											LS	832	15010	LS		STORM WATER POLLUTION PREVENTION INSPECTION SOFTWARE	
											47,000	832	30000	47,000	EACH	EROSION CONTROL	
																DRAINAGE	
											35	601	38100	35	FT	PAVED GUTTER, TYPE 1-6	
											1.49	602	20000	1.49	CY	CONCRETE MASONRY	
50											50	605	05200	50	FT	4" UNCLASSIFIED PIPE UNDERDRAINS	
100											100	611	00406	100	FT	4" CONDUIT, TYPE F	
											42	611	04400	42	FT	12" CONDUIT, TYPE B	
											48	611	05900	48	FT	15" CONDUIT, TYPE B	
											59	611	07400	59	FT	18" CONDUIT, TYPE B	
											3	611	98370	3	EACH	CATCH BASIN, NO. 6	

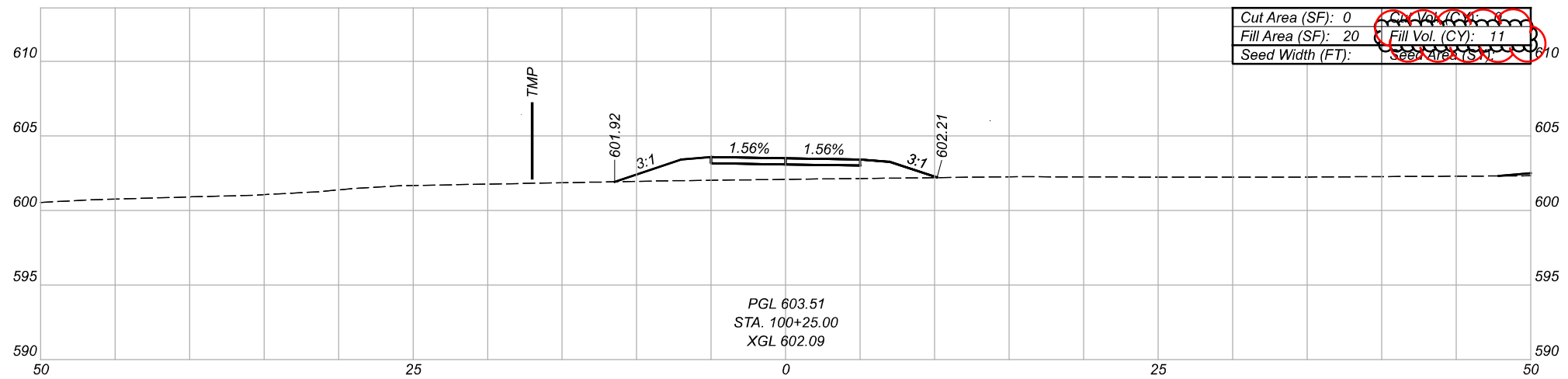
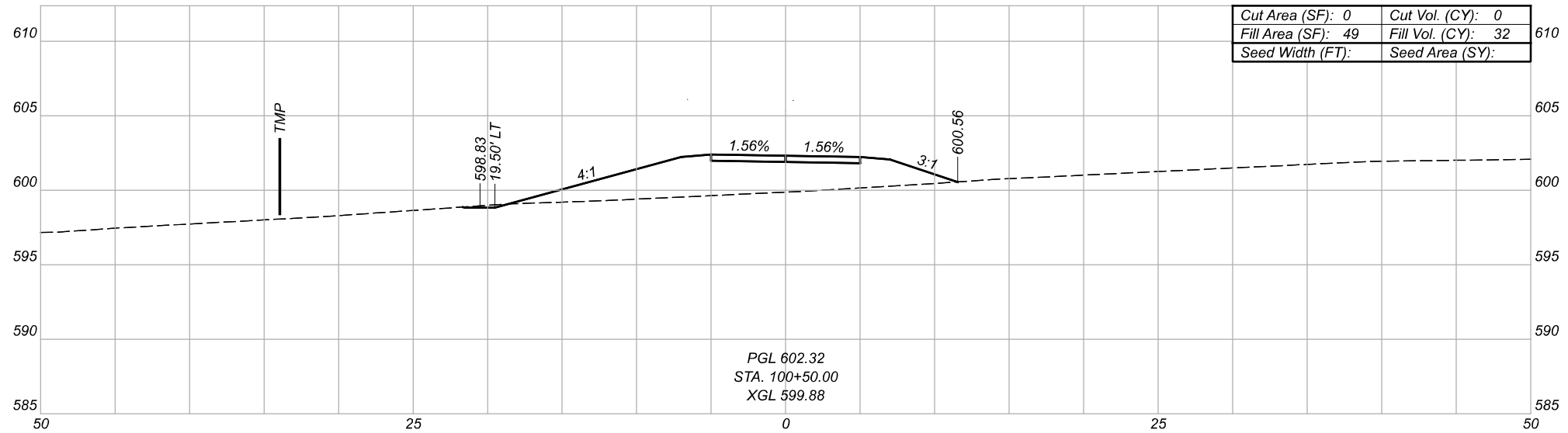
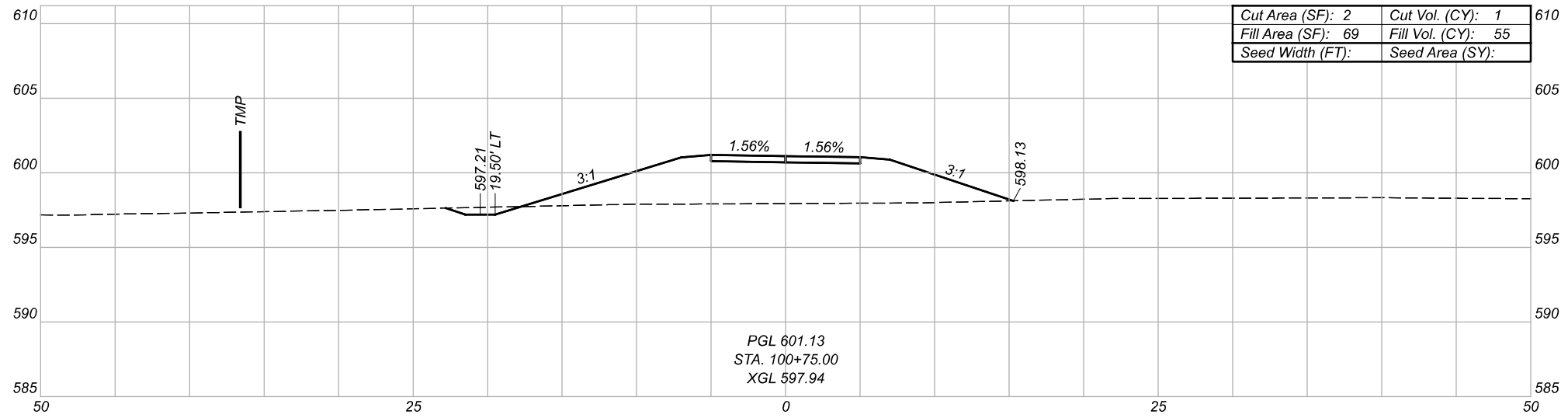
GENERAL SUMMARY

DESIGN AGENCY

 DESIGNER
 EMH
 REVIEWER
 SKR 08/15/23
 PROJECT ID
 114214
 SHEET TOTAL
 9 | 142

REF. NO.	SHEET NO.	STATION TO STATION		SIDE	607	607	608	608	608	609	609	609	609	611	611	690	690			
					FENCE, TYPE CLT	TEMPORARY VANDAL FENCE, TYPE C	FENCE, MISC.: BIKEWAY RAILING, TYPE RM-5.2	5" CONCRETE WALK	5" CONCRETE WALK, AS PER PLAN	CURB RAMP	COMBINATION CURB AND GUTTER, TYPE 2	CURB, TYPE 6	CURB, TYPE 6, AS PER PLAN	6" CONCRETE TRAFFIC ISLAND	MANHOLE ADJUSTED TO GRADE	GAS VALVE BOX ADJUSTED TO GRADE	SPECIAL - MAILBOX REMOVED AND RESET	BOLLARD, HINGED		
					FT	FT	SF	SF	SF	FT	FT	FT	SY	EACH	EACH	EACH	EACH			
C1	18	70+20.04	7+42.49	LT								23								
C1A	18	8+71.19	9+11.93	RT							41									
MH1	18	9+27.07		LT										1						
VB1	18	8+19.56		LT											1					
VB2	18	9+30.60		LT											1					
MB1	18	9+47.37		RT												1				
BH1	19	11+75.00		CL														1		
BR1	21	20+81.98	22+75.67	RT			194													
VB3	21	23+01.37	23+04.40	LT											2					
BH2	21	22+65.18		CL														1		
SW1	22	26+07.20	26+32.20	RT				131												
VB4	22	25+30.95		RT											1					
VB5	22	26+94.52		LT											1					
VB6	22	27+47.89		LT											1					
CR1	23	33+01.24	33+11.24	LT/RT					186											
DW1	23	33+01.24	33+11.24	LT																
WP1	23	30+35.54		RT																
BH3	23	30+10.00		CL														1		
BR2	25	50+77.54	52+36.81	LT			159													
CR2	25	50+55.33	50+71.69	LT/RT					196											
DW2	25	50+55.33	50+65.33	RT																
SW2	25	53+62.34	53+97.59	LT				182												
CLF1	26	56+46.99	58+43.79	LT	197															
TVF1	26	56+46.99	58+43.79	LT		197														
BR3	27	61+71.82	65+28.45	LT			357													
SW3	28	67+02.64	67+12.03	RT				37												
SW4	28	68+23.99	68+32.53	RT																
CR3	28	65+67.00	65+85.25	LT					106											
CR4	28	66+16.40	66+27.32	LT/RT					59											
CR5	28	66+27.32	66+41.41	LT/RT					77											
CR6	28	66+85.43	67+02.64	RT					90											
CR7	28	67+12.03	67+32.24	RT					88											
CR8	28	67+75.20	67+85.45	RT					57											
CR9	28	67+85.45	67+97.44	RT					66											
CR10	28	68+22.04	68+30.46	RT					78											
C2	28	65+83.59	65+90.35	LT						15										
C3	28	66+16.61	66+50.09	LT/RT								107								
C4	28	66+71.60	67+61.47	RT								103								
C5	28	66+73.43	67+37.64	RT																
C6	28	67+55.26	67+61.47	RT						75										
C7	28	67+76.06	67+99.95	RT						12										
C8	28	68+21.49	68+27.73	RT																
CT1	28	66+16.61	66+50.09	LT/RT									63							
CT2	28	67+76.06	67+99.95	RT									15							
TOTALS CARRIED TO GENERAL SUMMARY					197	197	710	254	182	1003	52	128	303	78	1	7	1	3		

ROADWAY SUB-SUMMARY

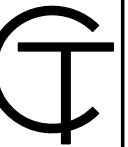
DESIGN AGENCY

 DESIGNER
 EMH
 REVIEWER
 SKR 08/15/23
 PROJECT ID
 114214
 SHEET TOTAL
 14 142



Sheet Totals			TOTAL	
Seeding	Cut	Fill	SHEET	TOTAL
.	.	.	52	115

CROSS SECTIONS - PARK CONNECTOR SHARED USE PATH
 STA 100+25 TO STA 100+75

DESIGN AGENCY



DESIGNER

EMH

REVIEWER

SKR 11/10/23

PROJECT ID

114214

GENERAL NOTES:

REFERENCE TO THE FOLLOWING STANDARD DRAWINGS AND SUPPLEMENTAL SPECIFICATIONS:

DM-1.1 DATED 07-17-20

800 DATED 01-21-22

870 DATED 10-21-22

878 DATED 01-21-22

ITEM 870 - PREFABRICATED MODULAR RETAINING WALL, AS PER PLAN:

THE DESIGN, FABRICATION, AND CONSTRUCTION OF EACH PREFABRICATED MODULAR RETAINING WALL (PMRW) SHALL BE PER ODOT SUPPLEMENTAL SPECIFICATION 870 AND THE ODOT BDM. THE WALL SYSTEM SUPPLIER IS RESPONSIBLE FOR THE INTERNAL STABILITY DESIGN OF THE PREFABRICATED MODULAR RETAINING WALL. THE DESIGN SHALL ASSUME A BACKFILL UNIT WEIGHT OF 120 PCF AND A BACKFILL DRAINED FRICTION ANGLE OF 30 DEGREES.

THE RETAINING WALLS SHALL HAVE AN AESTHETIC SURFACE TREATMENT TO CLOSELY RESEMBLE THAT OF REDI-ROCK LEDGESTONE PATTERN, IN A LIGHT GRAY COLOR. THE AESTHETIC SURFACE TREATMENT SHALL BE SUBMITTED TO THE ENGINEER FOR REVIEW AND APPROVAL.

ALL LABOR, EQUIPMENT, MATERIALS, AND INCIDENTALS REQUIRED TO DESIGN, FABRICATE, AND CONSTRUCT THE PMRW SHALL BE INCLUDED WITH THE UNIT BID PRICE FOR ITEM 870 PREFABRICATED MODULAR RETAINING WALL, AS PER PLAN.

FOUNDATION BEARING RESISTANCE:

THE NORTH RETAINING WALL, AS DESIGNED, PRODUCE A MAXIMUM SERVICE LIMIT STATE BEARING PRESSURE OF 2000 PSF AND A MAXIMUM STRENGTH LIMIT STATE BEARING PRESSURE OF 3000 PSF. THE FACTORED BEARING RESISTANCE IS 3000 PSF.

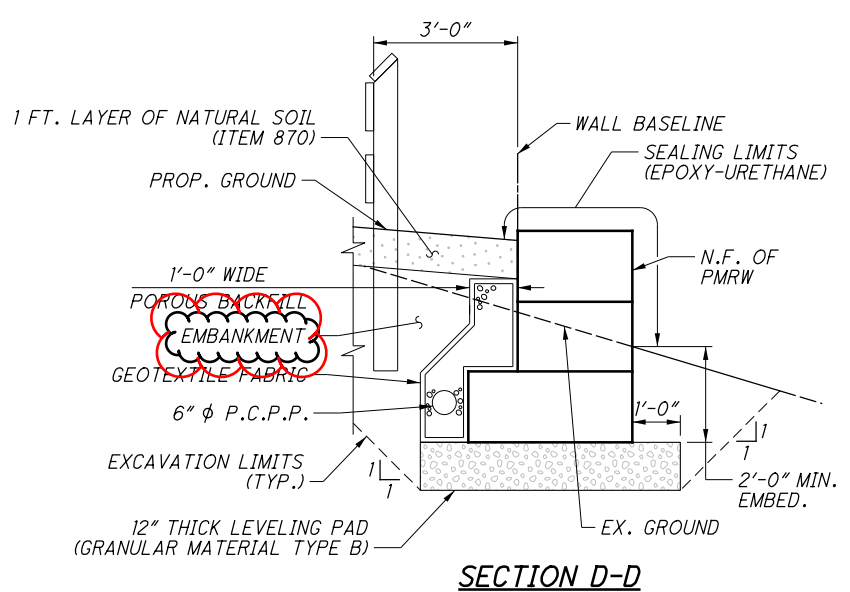
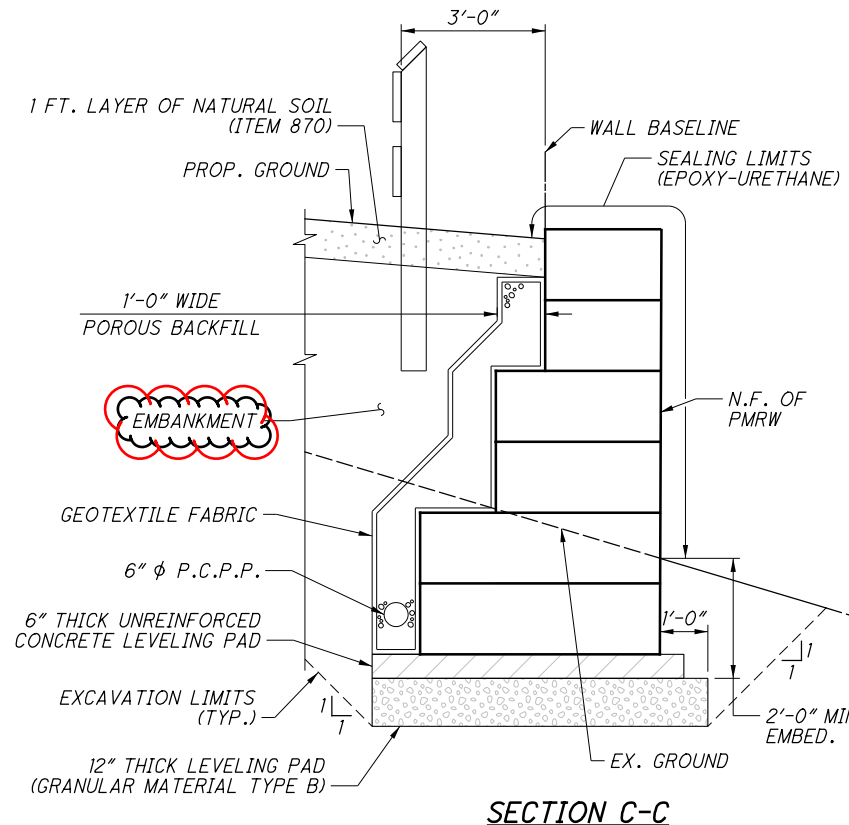
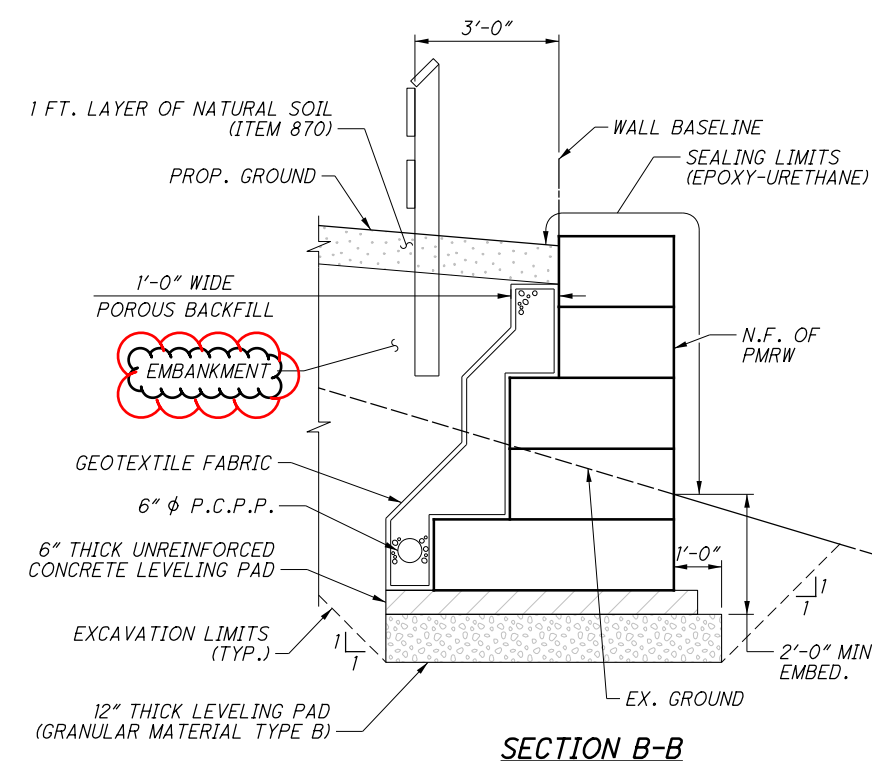
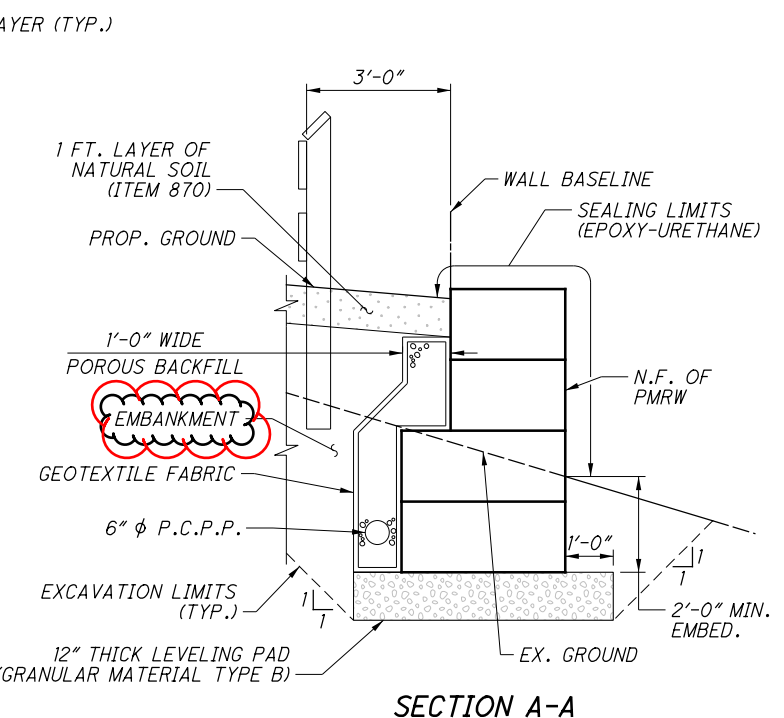
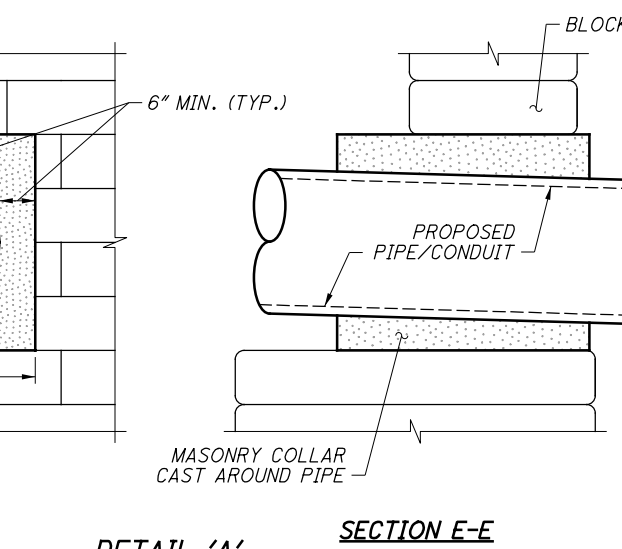
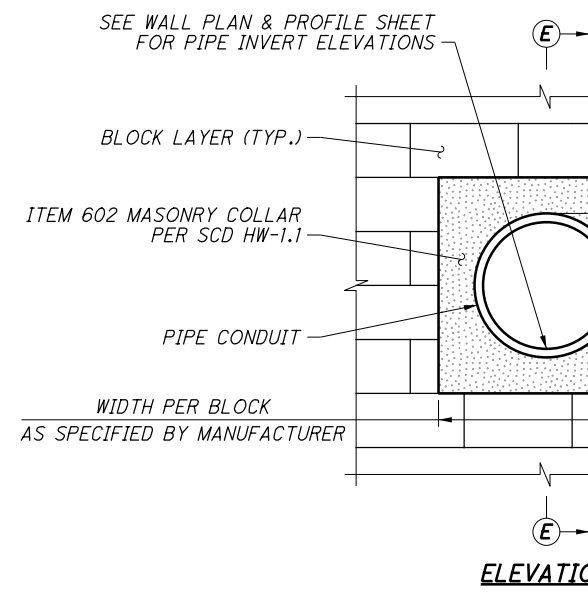
THE SOUTH RETAINING WALL, AS DESIGNED, PRODUCE A MAXIMUM SERVICE LIMIT STATE BEARING PRESSURE OF 3000 PSF AND A MAXIMUM STRENGTH LIMIT STATE BEARING PRESSURE OF 4500 PSF. THE FACTORED BEARING RESISTANCE IS 4500 PSF.

ABBREVIATIONS:

© - CENTERLINE
 φ - DIAMETER
 B/W - BOTTOM OF WALL
 EL. - ELEVATION
 EMBED. - EMBEDMENT
 EX. - EXISTING
 F.F. - FAR FACE
 MIN. - MINIMUM
 N.F. - NEAR FACE
 N.P.C.P.P. - NON-PERFORATED CORRUGATED PLASTIC PIPE

P.C.P.P. - PERFORATED CORRUGATED PLASTIC PIPE
 PMRW - PREFABRICATED MODULAR RETAINING WALL
 PROP. - PROPOSED
 RT. - RIGHT
 STA. - STATION
 TBR - TO BE RELOCATED
 T/W - TOP OF WALL

ESTIMATED QUANTITIES							CALC. BY: MLF ; CHKD. BY: TAB	
ITEM	ITEM EXT.	N. WALL	S. WALL	TOTAL	UNIT	DESCRIPTION	SHEET REF.	
512	10100	238	153	391	SY	SEALING OF CONCRETE SURFACES (EPOXY-URETHANE)		
601	32204	2	2	4	CY	ROCK CHANNEL PROTECTION, TYPE C WITH GEOTEXTILE FABRIC		
602	20000	1	1	2	CY	CONCRETE MASONRY		
611	99710	1	1	2	EACH	PRECAST REINFORCED CONCRETE OUTLET		
870	10001	1889	1245	3134	SF	PREFABRICATED MODULAR RETAINING WALL, AS PER PLAN	73	
870	11000	494	283	777	CY	WALL EXCAVATION		
870	11100	56	30	86	CY	NATURAL SOIL		
870	12000	309	166	475	FT	6" DRAINAGE PIPE, PERFORATED		
870	12100	10	8	18	FT	6" DRAINAGE PIPE, NON-PERFORATED		
870	14000			2	DAY	ON-SITE ASSISTANCE		



NOTES:
 1. FOR LOCATION OF SECTIONS A-A, B-B, C-C & D-D, SEE INDIVIDUAL WALL PLAN AND ELEVATION ON SHEETS 74 TO 76.

HAM-US 42-14.78
 MODEL: SHI - CLP_WALL_Gen Notes (Sheet) PAPER SIZE: 11x17 (in.) DATE: 2/15/2024 TIME: 14:46:47 PM USER: johnsonm
 H:\2020\200863\14214\400-Engineering\Roadway\Sheets\14214_WP100.dgn

RETAINING WALLS NOTES, QUANTITIES & SECTIONS

DESIGN AGENCY

 DESIGNER: MLF
 REVIEWER: TAB 08/15/23
 PROJECT ID: 114214
 SHEET: 84 TOTAL: 142