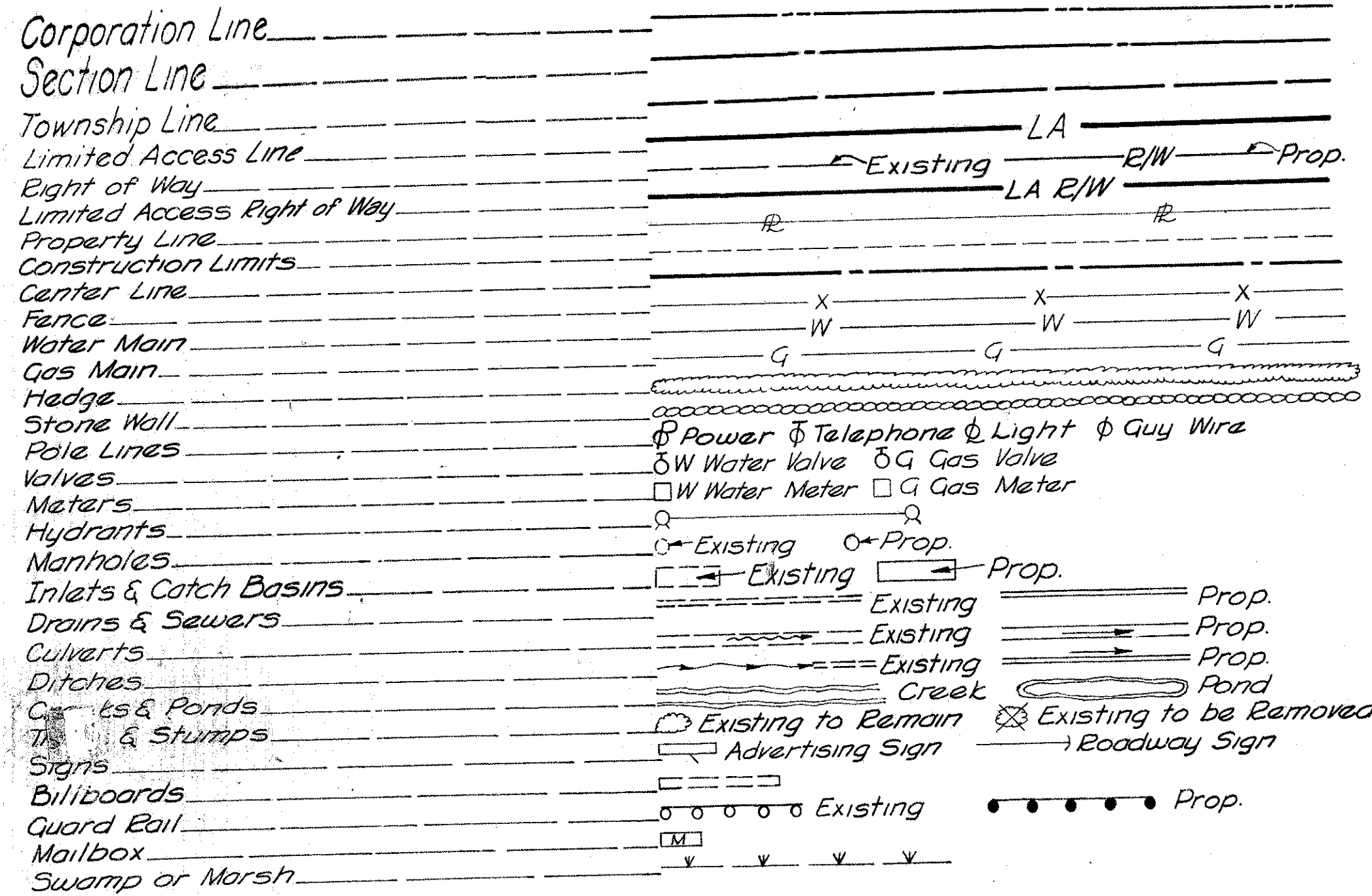


CONVENTIONAL SIGNS



INDEX OF SHEETS

Sh. Nos. 15, 364, 366, 372, 399 & 400 Omitted

Title Sheet	1
Schematic Layout Plan and Design Designation	2
Typical Sections & Pavement Details	3-12
Superelevation Tables	13-14
Temporary Runarounds	16
Delineators & Stripping & Guard Rail Tables	17-19A
General Notes	23
Sub Summary	24-30
General Summary	31-51
Main Line Plan & Profile	52-65
Red Bank Expressway & Interchange Ramps A, B, C & D Plan & Profile	66-73
Co. Rd. No. 327 (Stewart Road) & Interchange Ramps E, F, & G Plan & Profile	74
Co. Rd. No. 322 (Euclid Road) Plan & Profile	75-77
Co. Rd. No. 269 (Kenwood Rd) Interchange Ramps G & H Plan & Profile	78-83
20 Scale Details (Red Bank Expressway & Interchange)	84-87
(Co. Rd. No. 327 Stewart Rd. Interchange)	88-91
(Mainline Sta. 562+00 to Sta. 575+00 & Co. Rd. No. 269 Kenwood Rd. Interchange)	92-235
Main Line Cross Sections	236
Co. Rd. No. 331 (Red Bank Rd) Cross Sections	237-304
Red Bank Expressway & Interchange Ramps A, B, C & D Cross Sections	305-342
Co. Rd. No. 327 (Stewart Rd) & Interchange Ramps E, F, & G Cross Sections	343-344
Co. Rd. No. 322 (Euclid Road) Cross Sections	345-350
Co. Rd. No. 269 (Kenwood Road) Interchange Ramps G & H Cross Sections	351-360
Drainage Details	361-367
Sanitary Sewers	368-392
Water Main Details	393-401
Roadway Lighting	402-414
Traffic Control	415-499A
Structure over 20' Span	500-504
Fencing Plan	505-525
Right of Way	

LINE DATA

Begin Project Sta. 435+07.72	
End Project Sta. 575+00.00	13,992.28 Lin. Ft.
Gross Length of Project	20.44 Lin. Ft.
Deduct for Equation Sta. 572+06.93 Back = Sta. 572+27.37 Ahead	13,971.84 Lin. Ft. or 2.646 Miles
Net Length of Project	
Add for Approaches	
South Approach Sta. 433+00.00 to Sta. 434+25.00 Back = Sta. 435+07.72 Ahead	125.00 Lin. Ft.
North Approach Sta. 575+00.00 to Sta. 576+61.00	161.00 Lin. Ft.
Co. Rd. No. 331 (Red Bank Rd) Sta. 47+91.00 to Sta. 52+45.00	454.00 Lin. Ft.
Co. Rd. No. 327 (Stewart Rd.) Sta. 41+85.35 to Sta. 59+34.51	1,749.16 Lin. Ft.
Co. Rd. No. 322 (Euclid Rd) Sta. 46+50.00 to Sta. 66+00.00	1,950.00 Lin. Ft.
Total Length of Work	3,436.00 Lin. Ft. or 3.086 Miles

Sheet No. 425 & 426 revised 8-11-67 EBL  
 Sheets No. 426 & 457 revised 8-23-67 CW  
 Sheet No. 421 & 422 revised 9-11-67 EBL  
 Sheet Nos. 441, 442, 455, 456, 457, 458,  
 469, 473, 480, 481, 482, & 484 revised  
 9-13-67 EBL

STATE OF OHIO

DEPARTMENT OF HIGHWAYS

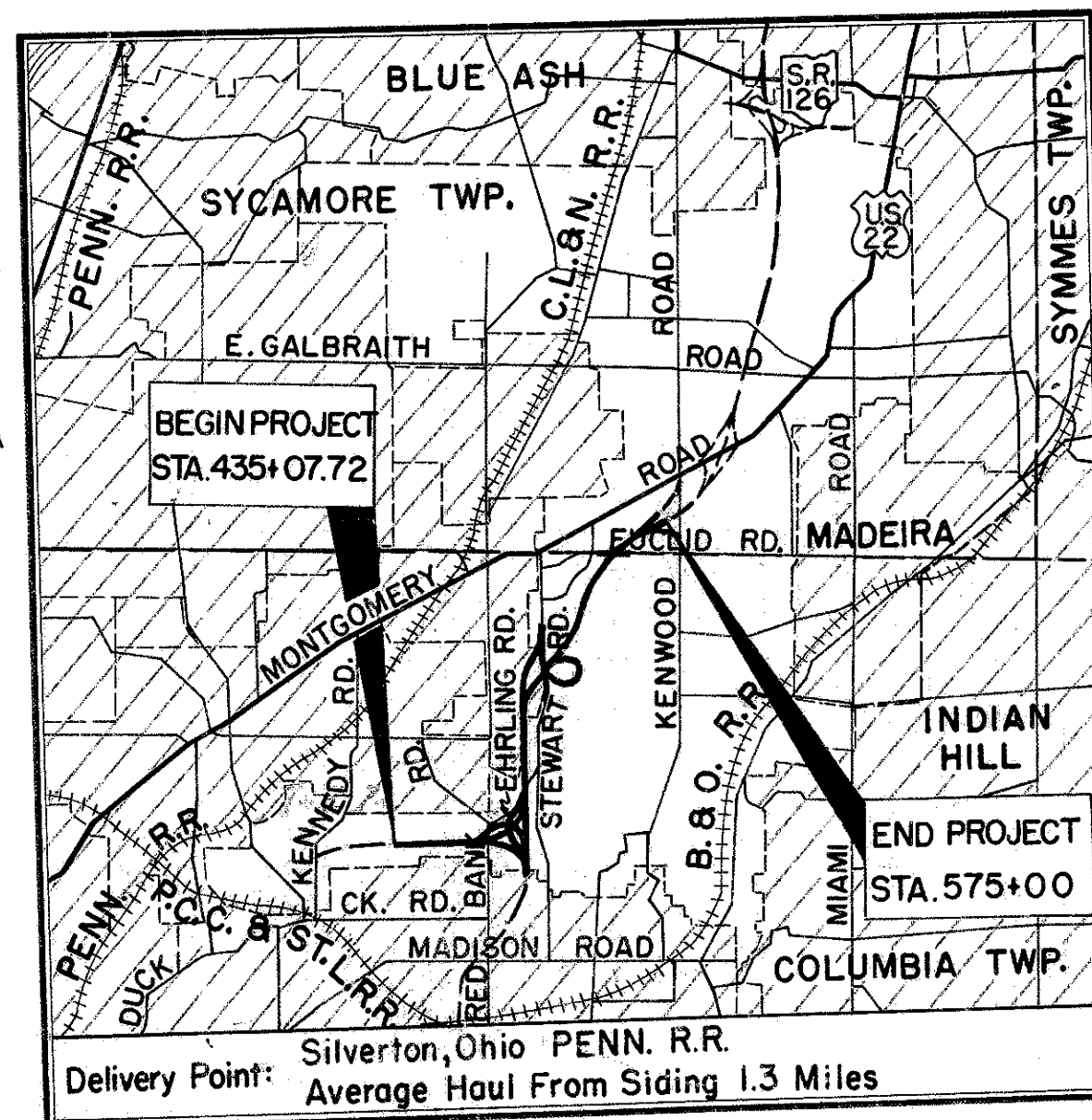
HAM.-71-8.86

SYCAMORE TOWNSHIP  
 COLUMBIA TOWNSHIP

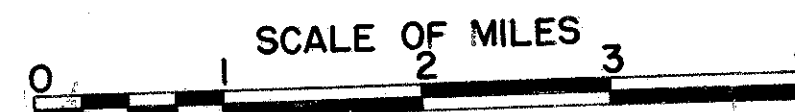
HAMILTON COUNTY

CITY OF CINCINNATI

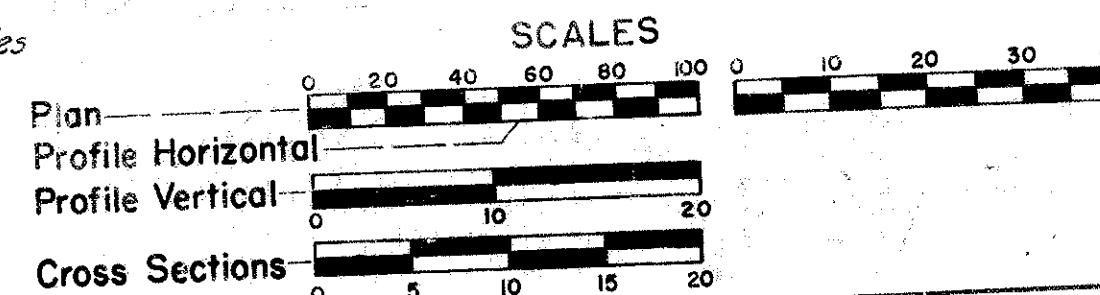
VILLAGE OF SILVERTON



LOCATION PLAN



Portion to be improved  
 State Highways  
 Other Roads  
 Future Construction



SUPPLEMENTAL PRINTS OF STANDARD CONSTRUCTION DRAWINGS	
BP-1	6-1-65 MC-4 6-1-65 MH-2 6-1-65 MC-1 6-1-65
BP-2	6-1-65 CB-2-2-A&B 6-1-65 BP-7 1-1-66 BP-5 6-1-65
BP-6	6-1-65 HL-1 11-1-65 GR-1 6-1-65 BP-4 6-1-65
F-1	6-1-65 CB-3 6-1-65 GR-2A 9-1-65 BR-1-65 Sh. 1&2 11-24-65
F-2	6-1-65 HL-2 11-1-65 GR-6 6-1-65 AS-1-54 8-10-65
F-3	6-1-65 CB-4 6-1-65 MC-6 6-1-65 SD-1-65 Sh. 1&2 11-8-65
MC-3	5-1-66 CB-5 6-1-65 MC-7 3-1-66
HW-1	6-1-65 CB-6 6-1-65 L-1 6-1-65 FSB-1-62 1-15-63
HW-2	6-1-65 I-2A 6-1-65 BP-3 6-1-65 RB-1-55 2-2-59
HW-3	6-1-65 MH-1 6-1-65 FACI-1 6-1-65 HL-4 1-1-66
HW-E	6-1-65 MH-1A 6-1-65 FACI-2 6-1-65

SUPPLEMENTAL SPECS.	
801	9-2-65 1001 3-21-66
808	2-7-66 828 3-21-66
811	3-29-65
815	8-6-65
816	8-6-65
825	4-22-65

Sheet No. 470, 474, 476, 478, 480, 481 revised 10-6-67 EBL  
 Sheet No. 470, 471, 472, 476 & 477 revised 12-5-67 EBL  
 Sheet No. 444 revised 1-3-68 EBL  
 Sheet No. 462A supersedes sheet No. 462, 1-3-68 EBL  
 Sheet No. 444 revised 1-26-68 EBL

LIMITED ACCESS

This improvement is especially designed for through traffic and has been declared a limited access highway or freeway by action of the Director of Highways in accordance with the provisions of Section 5511.02 of the Revised Code of Ohio.

1965 SPECIFICATIONS

The standard specifications of the State of Ohio Department of Highways including changes and supplemental specifications listed in the proposal shall govern this improvement.

The Right of Way for this improvement will be provided by the State of Ohio.

I hereby approve these plans and declare that the making of this improvement will not require the closing of the highway to traffic and that provisions for the maintenance and safety of traffic will be as set forth on these plans and estimates.

Sheet Nos. 416, 417, 419, 420, 422, 423, 424, 425, 426, 431, 432, 433, 434, 436, 437, 439, 440, 441, 442, 444, 447, 450, 451, 454, 455, 456, 457, 458, 463, 464, 465, 468, 471, 472, 473, 474, 475, 476, 477, 478, 480, 481, 482, 483, 487, 488, 491, 492, 494, 495, 496, 497 and 499A revised 2-24-67.

- Approved 10-11-65 J.R. Cooke, Division Deputy Director
- Approved 7-15-66 C.A. Advertiser, Engineer of Bridges
- Approved 7-15-66 R.V. Ricketts, Engineer of Location & Design
- Approved 7-15-66 R.E. Smith, Deputy Director of Design & Construction
- Approved 7-27-66 T.H. Borah, Deputy Director of Right of Way
- Approved 7-26-66 S. Williams, Deputy Director of Planning & Programming
- Approved [Signature], Chief Engineer
- Approved 7/27/66 J.E. Mascher, Director of Highways
- Approved 11-5-65 W. [Signature], City Manager, City of Cincinnati

Sheet No. 425, 426, 453, 459 and 462 revised 5-5-67 E.B.L.  
 Sheet Nos. 435, 436, 441, 443, 444, 445, 452, 453, 454, 459, 460, 465 and 480 revised 5-16-67  
 Sheet No. 490 revised 7-31-67 EBL

PREPARED BY  
**HARRY BALKE ENGINEERS**  
 CINCINNATI, OHIO

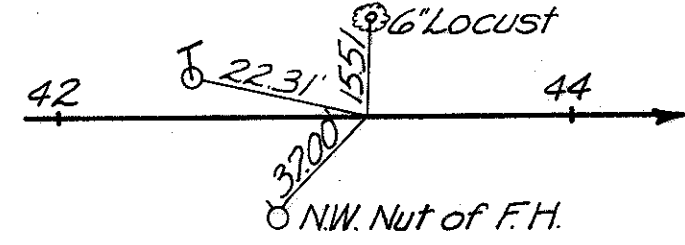
DEPARTMENT OF COMMERCE  
 BUREAU OF PUBLIC ROADS

APPROVED: \_\_\_\_\_ DATE \_\_\_\_\_  
 DIVISION ENGINEER

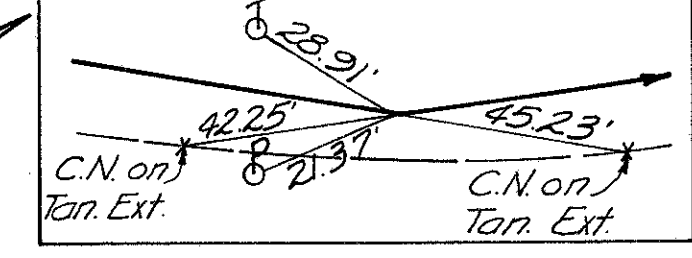
FILE NO. \_\_\_\_\_  
 HAMILTON COUNTY HAM.-71-8.86  
 DATE OF LETTING \_\_\_\_\_  
 CONTRACT NUMBER \_\_\_\_\_



REFERENCE P.O.T. STA. 43+00



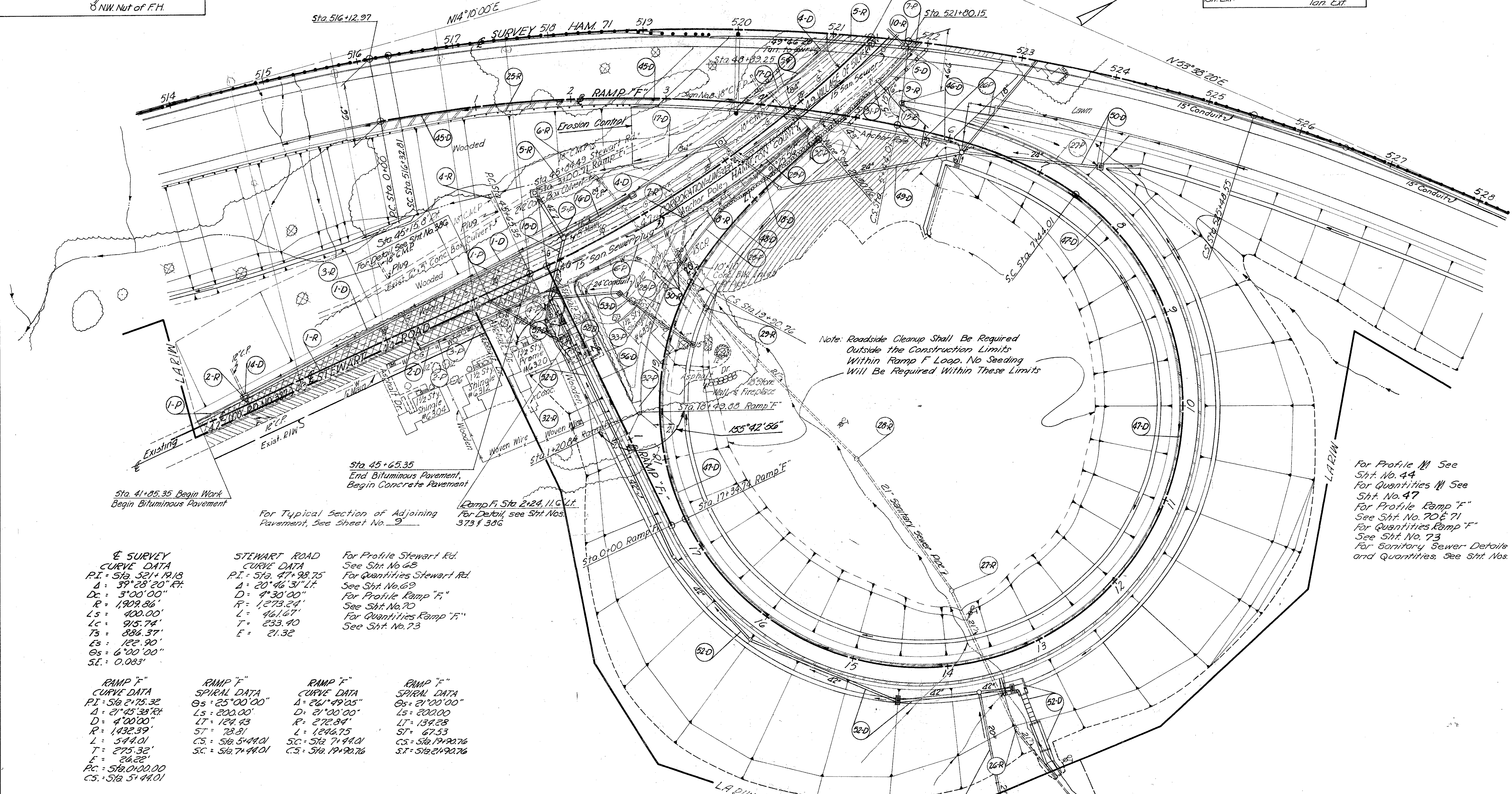
REFERENCE P.I. STA. 47+98.75



FED. RD. DIVISION	STATE	PROJECT
2	OHIO	

67  
525

HAMILTON COUNTY  
HAM. 71-8.86



Note: Roadside Cleanup Shall Be Required Outside the Construction Limits Within Ramp F Loop. No Seeding Will Be Required Within These Limits

**STEWART ROAD CURVE DATA**  
 P.I. = 519.321+19.18  
 Δ = 59°28'20" Rt.  
 Dc = 3°00'00"  
 R = 1,909.86'  
 Ls = 400.00'  
 Lc = 915.74'  
 Ts = 884.37'  
 Es = 122.90'  
 Os = 6°00'00"  
 SL = 0.083'

**RAMP F CURVE DATA**  
 P.I. = 518.2175.32  
 Δ = 21°45'38" Rt.  
 D = 4°00'00"  
 R = 1,432.39'  
 L = 544.01'  
 T = 275.32'  
 E = 26.22'  
 P.C. = 518.0100.00  
 C.S. = 518.5144.01

**RAMP F SPIRAL DATA**  
 Os = 25°00'00"  
 Ls = 200.00'  
 LT = 124.43'  
 ST = 78.81'  
 CS = 518.5144.01  
 SC = 518.7144.01

**RAMP F CURVE DATA**  
 Δ = 26°49'25"  
 D = 21°00'00"  
 R = 272.84'  
 L = 1246.75'  
 SC = 518.19190.76

**RAMP F SPIRAL DATA**  
 Os = 21°00'00"  
 Ls = 200.00'  
 LT = 134.28'  
 ST = 67.53'  
 CS = 518.19190.76  
 SC = 518.2490.76

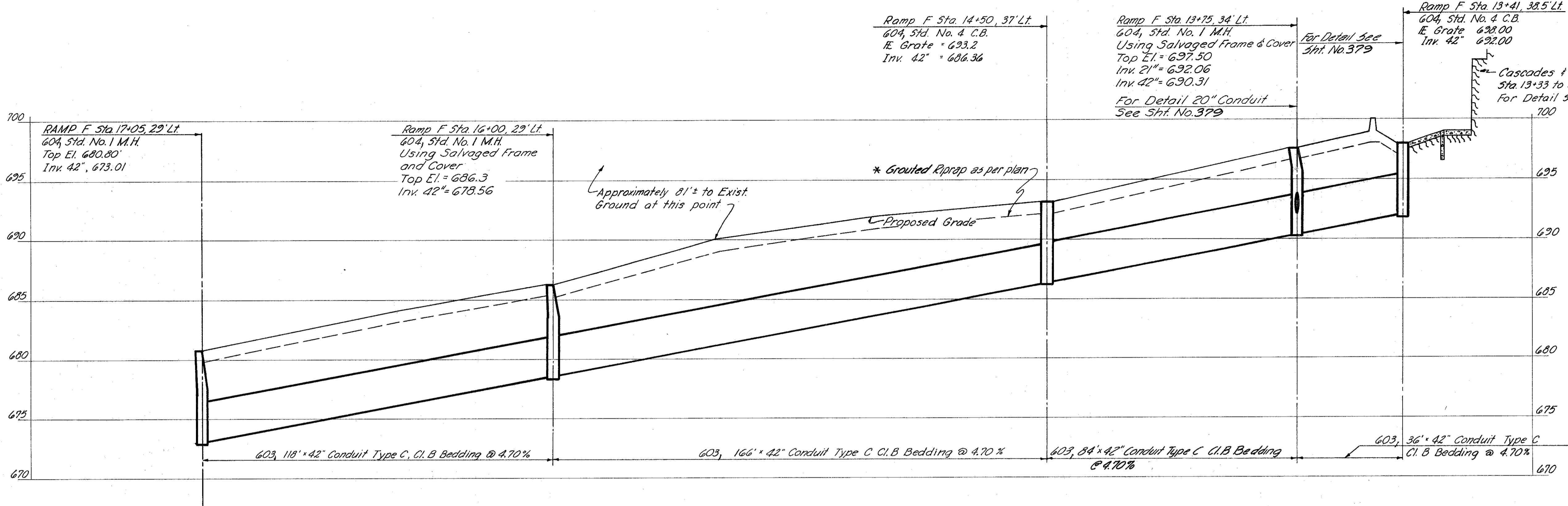
Note: Sta. 45+10.36 Rt to 88 Rt Stewart Rd. Existing Pavement Outside the Construction Limits but within the R/W Limits shall be removed and earth backfilled. Payment for removal shall be included in Item 203. Excavation not including embankment. Earth Backfill shall be included in Item 203. Embankment. For Quantities see Sheet No. 306.

Note: For Ramp F & F Details See Sheet No's. 844 & 872  
 Note: For Stewart Rd. Details See Sheet No's. 844 & 852

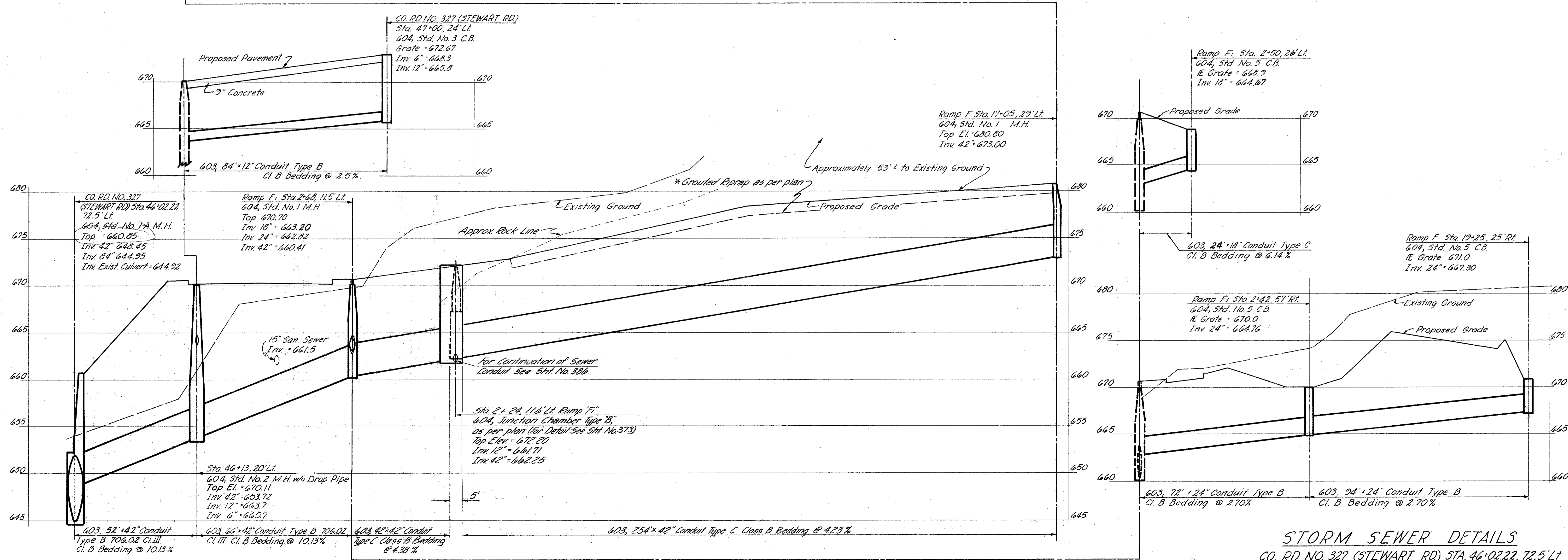
Note: Sta. 45+10, 108 to 130 Rt Stewart Rd. Existing Pavement Outside the Construction Limits but within the R/W Limits shall be removed and earth backfilled. Payment for removal shall be included in Item 202. Earth backfill shall be included in Item 203. Embankment. For Quantities see Sheet No. 73.

For Profile M See Sht. No. 44  
 For Quantities M See Sht. No. 47  
 For Profile Ramp "F" See Sht. No. 70 & 71  
 For Quantities Ramp "F" See Sht. No. 73  
 For Sanitary Sewer Details and Quantities. See Sht. Nos. 373 & 386





\* Note: For Grouted Riprap Detail See Sht. No. 379



**STORM SEWER DETAILS**  
CO. RD. NO. 327 (STEWART RD.) STA. 46+02.22, 72.5' Lt.  
to RAMP "F" STA. 13+41, 38.5' Lt.

Scale: Horizontal 1" = 20'  
Vertical 1" = 5'