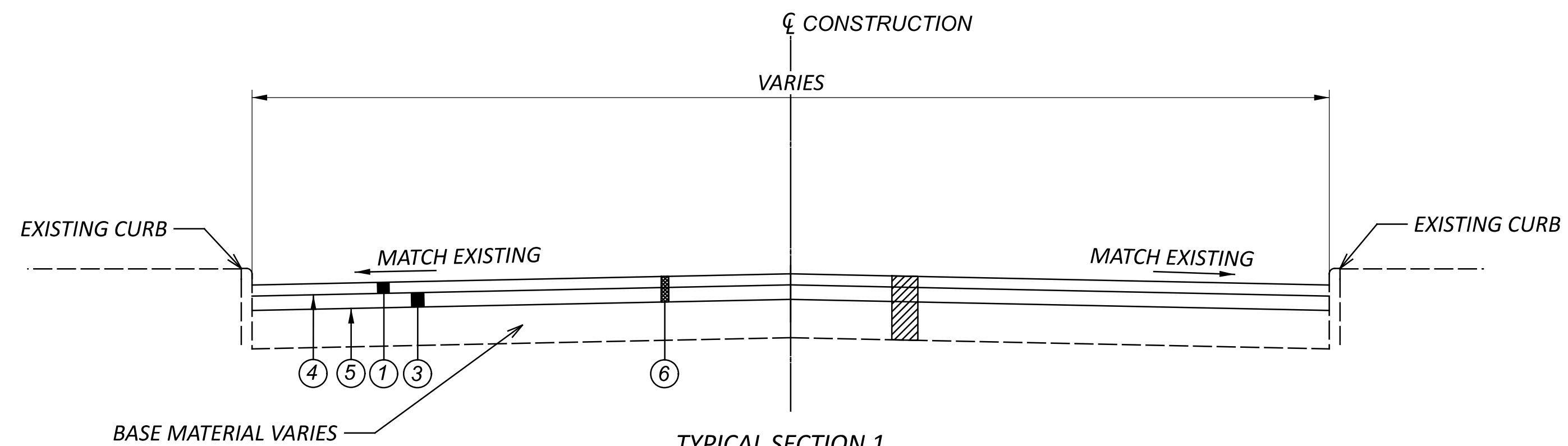
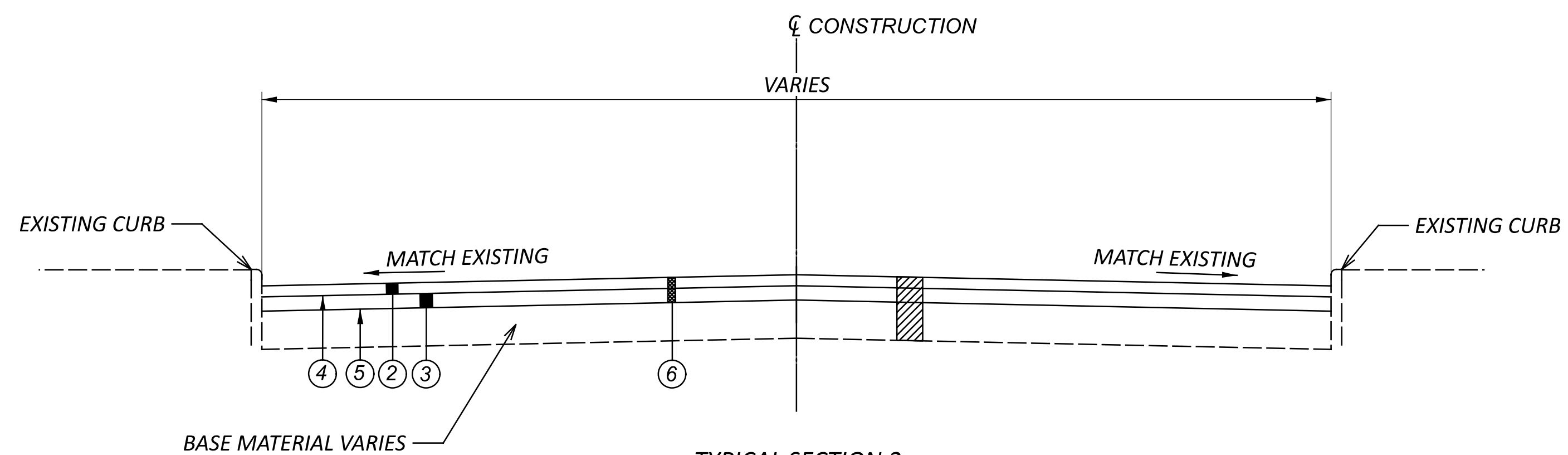


LEGEND

- ① ITEM 442: 1 1/2" ASPHALT CONCRETE SURFACE COURSE, 12.5MM, TYPE A, (448) PG76-22M
- ② ITEM 441: 1 1/2" ASPHALT CONCRETE SURFACE COURSE, 12.5MM, TYPE B (448) PG70-22
- ③ ITEM 442: 1 1/2" ASPHALT CONCRETE INTERMEDIATE COURSE, 9.5 MM, TYPE A, (448) PG64-28
- ④ ITEM 407: NON-TRACKING TACK COAT, (0.04 GAL. PER SY)
- ⑤ ITEM 407: NON-TRACKING TACK COAT, (0.075 GAL. PER SY)
- ⑥ ITEM 254: PAVEMENT PLANING, ASPHALT CONCRETE, 3"



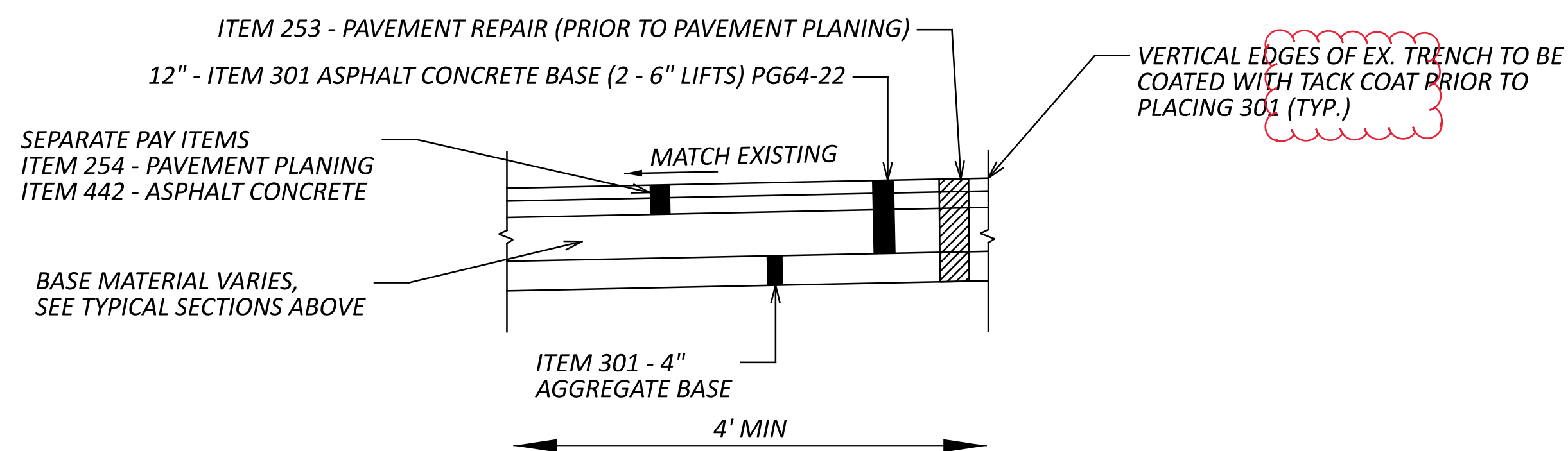
TYPICAL SECTION 1
 STA. 163+31 to STA. 165+54 - EX: CONCRETE BASE, ASPHALT SURFACE
 STA. 167+70 to STA. 175+00 - EX: CONCRETE BASE, ASPHALT SURFACE
 STA. 245+76 to STA. 248+50 - EX: ASPHALT BASE, ASPHALT SURFACE
 STA 163+31 TO STA. 175+00 - WIDTH - 48'
 STA 245+76 TO STA. 248+50 - WIDTH - 46'



TYPICAL SECTION 2
 STA. 175+00 to STA. 210+00 - EX: COBBLESTONE BASE, ASPHALT SURFACE
 STA. 210+00 to STA. 217+23 - EX: CONCRETE BASE, ASPHALT SURFACE
 STA. 248+50 to STA. 286+05 - EX: ASPHALT BASE, ASPHALT SURFACE

STA 175+00 TO STA. 178+50 - WIDTH VARIES - 59' to 54'
 STA 178+50 TO STA. 208+00 - WIDTH - 40'
 STA 208+00 TO STA. 210+00 - WIDTH - 44'
 STA 210+00 TO STA. 217+23 - WIDTH - 70'
 STA 248+50 TO STA. 286+05 - WIDTH - 40'

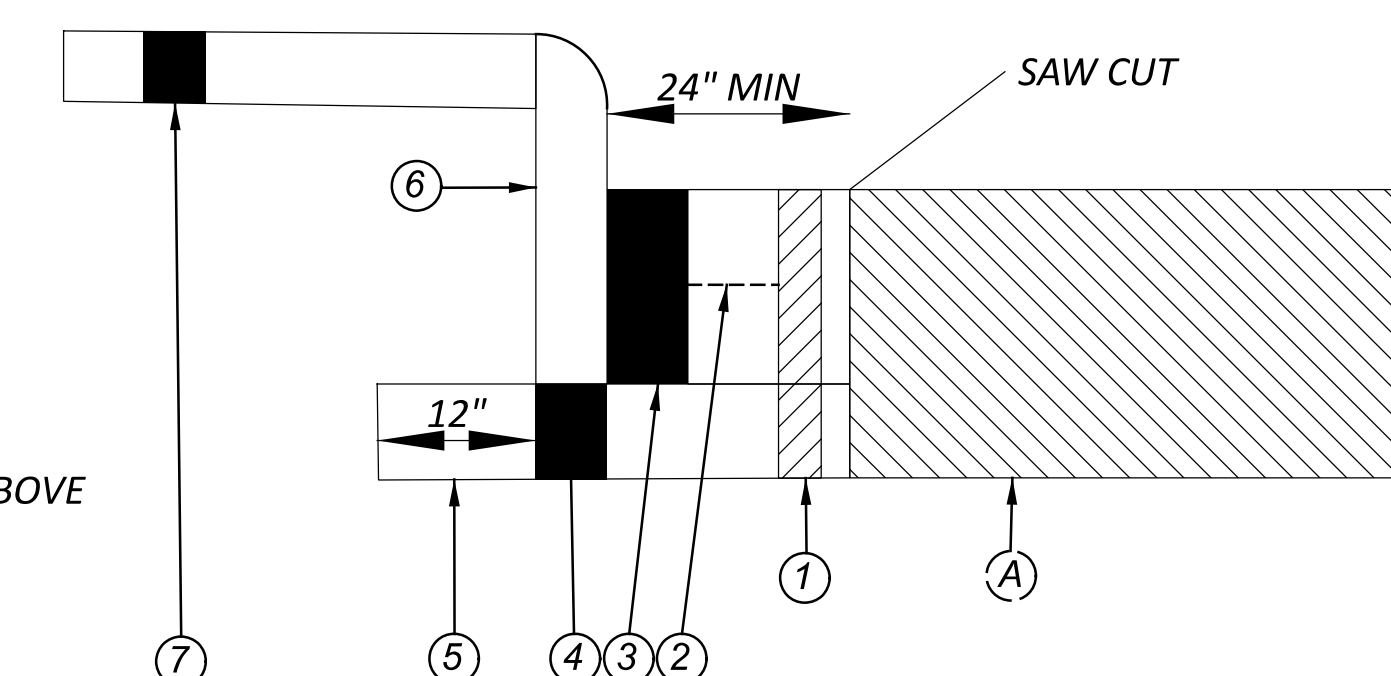
FULL DEPTH PAVEMENT REPAIR/RESTORATION (ITEM 253)



FULL DEPTH PAVEMENT REPAIR/RESTORATION (ITEM 253) - AS PER PLAN (AT CURB AND RAMPS)

- ① ITEM 253 - PAVEMENT REPAIR, AS PER PLAN
- ② ITEM 407 - NON TRACKING TACK COAT
- ③ ITEM 301 - 12" ASPHALT CONCRETE BASE, PG 64-22 2 - 6" LIFTS
- ④ ITEM 304 - 4" AGGREGATE BASE
- ⑤ ITEM 204 - SUBGRADE COMPACTION
- ⑥ ITEM 609 - CURB, TYPE 6
- ⑦ ITEM 608 - 5" CONCRETE WALK
- (A) EXISTING ASPHALT SECTION, BASE VARIES, SEE TYPICAL SECTIONS ABOVE

NOTE: SAME PAVEMENT REPAIR BUILD UP AT CURB RAMPS



ITEM 614 LAW ENFORCEMENT OFFICER (WITH PATROL CAR), CONT.

ANY ADDITIONAL COSTS (ADMINISTRATIVE OR OTHERWISE) INCURRED BY THE CONTRACTOR TO OBTAIN THE SERVICES OF AN LEO ARE INCLUDED WITH THE BID UNIT PRICE FOR ITEM 614, LAW ENFORCEMENT OFFICER WITH PATROL CAR FOR ASSISTANCE. THE LEO WORK AT THE DIRECTION OF THE CONTRACTOR. THE CONTRACTOR IS RESPONSIBLE FOR SECURING THE SERVICES OF THE LEO'S WITH THE APPROPRIATE AGENCIES AND COMMUNICATING THE INTENTIONS OF THE PLANS WITH RESPECT TO DUTIES OF THE LEO'S. THE ENGINEER SHALL HAVE FINAL CONTROL OVER THE LEO'S' DUTIES AND PLACEMENT, AND WILL RESOLVE ANY ISSUES THAT MAY ARISE BETWEEN THE TWO PARTIES.

THE LEO SHALL REPORT IN TO THE CONTRACTOR PRIOR TO THE START OF THE SHIFT. IN ORDER TO RECEIVE INSTRUCTIONS REGARDING SPECIFIC WORK ASSIGNMENTS DURING HIS/HER SHIFT. THE LEO IS EXPECTED TO STAY AT THE PROJECT SITE FOR THE ENTIRE DURATION OF HIS/HER SHIFT. THE LEO SHALL REPORT TO THE CONTRACTOR AT THE END OF HIS/HER SHIFT. ONCE THE LEO HAS COMPLETED THE DUTIES DESCRIBED ABOVE AND STILL HAS TIME REMAINING ON HIS/HER SHIFT, THE LEO MAY BE ASKED TO PATROL THROUGH THE WORK ZONE (WITH FLASHING LIGHTS OFF) OR BE PLACED AT A LOCATION TO DETER MOTORISTS FROM SPEEDING. SHOULD IT BE NECESSARY TO LEAVE THE PROJECT SITE, THE LEO SHALL NOTIFY THE ENGINEER. THE CONTRACTOR SHALL PROVIDE THE LEO WITH A TWO-WAY COMMUNICATION DEVICE WHICH SHALL BE RETURNED TO THE CONTRACTOR AT THE END OF HIS/HER SHIFT.

THE CONTRACTOR SHALL COORDINATE WITH LEOS TO PROVIDE NO PARKING MARKINGS AND ENFORCEMENT WITHIN THE PROJECT AREA.

LEOS (WITH PATROL CAR) REQUIRED BY THE TRAFFIC MAINTENANCE TASKS ABOVE SHALL BE PAID FOR ON A UNIT PRICE (HOURLY) BASIS UNDER ITEM 614, LAW ENFORCEMENT OFFICER (WITH PATROL CAR) FOR ASSISTANCE. THE FOLLOWING ESTIMATED SUBSUMMARY HAVE BEEN CARRIED TO THE GENERAL SUMMARY.

ITEM 614, LAW ENFORCEMENT OFFICER WITH PATROL CAR FOR ASSISTANCE 300 HOURS.

THE HOURS PAID SHALL INCLUDE ANY MINIMUM SHOW-UP TIME REQUIRED BY THE LAW ENFORCEMENT AGENCY INVOLVED.

ANY ADDITIONAL COSTS (ADMINISTRATIVE OR OTHERWISE) INCURRED BY THE CONTRACTOR TO OBTAIN THE SERVICES OF A LEO ARE INCLUDED WITH THE BID UNIT PRICE FOR ITEM 614, LAW ENFORCEMENT OFFICER WITH PATROL CAR FOR ASSISTANCE.

DETECTION MAINTENANCE

IF VEHICLE DETECTION BECOMES UNEXPECTEDLY DISABLED, REQUIRES MODIFICATION, OR IS SCHEDULED TO BE TEMPORARILY REMOVED DURING THE CONSTRUCTION PROJECT, THE CONTRACTOR SHALL IMMEDIATELY NOTIFY THE PROJECT ENGINEER AND DISTRICT TRAFFIC ENGINEER.

IF THE LOSS OF VEHICLE DETECTION IS KNOWN PRIOR TO THE START OF CONSTRUCTION, IT SHALL BE DISCUSSED AT THE PRE-CONSTRUCTION MEETING. AT SUCH TIME, THE DISTRICT TRAFFIC ENGINEER SHALL ADVISE THE PROJECT ENGINEER AND CONTRACTOR ON THE APPROPRIATE ACTION TO RECTIFY ANY LOSS OF VEHICLE DETECTION. THIS MAY INCLUDE PLACING THE TRAFFIC SIGNAL ON MINIMUM OR MAXIMUM RECALL, MODIFYING THE MINIMUM GREEN TIMES, AND REMOVING THE MALFUNCTIONING DETECTION FROM SERVICE. WHERE NON-INTRUSIVE DETECTION (I.E. VIDEO, RADAR) ALREADY EXISTS, THE CONTRACTOR SHALL INSURE THAT DETECTION IS OPERATING AND MAINTAINED BY RECONFIGURING THE DETECTION UNITS ACCORDINGLY DURING ALL CONSTRUCTION PHASES. THIS IS TO AVOID THE SIGNAL FROM MAXING OUT THE EFFECTED SIGNAL PHASE AND CREATING UNNECESSARY DELAYS.

TEMPORARY NON-INTRUSIVE DETECTION IS ANTICIPATED FOR THIS PROJECT.

LOCATIONS WHERE NON-INTRUSIVE DETECTION IS PROPOSED AND THE EXISTING VEHICLE DETECTION IS TO BE ABANDON, THE NON-INTRUSIVE VEHICLE DETECTION SHALL BE INSTALLED, CONFIGURED AND MADE FULLY FUNCTIONAL PRIOR TO THE EXISTING DETECTION BEING DISABLED. THE CONTRACTOR SHALL CONTINUE TO MAINTAIN AND MODIFY THE DETECTION UNTIL FINAL ACCEPTANCE OF THE TRAFFIC SIGNAL. THIS IS TO ENSURE VEHICLE DETECTION REMAINS FULLY FUNCTIONAL THROUGHOUT CONSTRUCTION.

CONSTRUCTION NOTIFICATION

THROUGHOUT THE DURATION OF THE PROJECT, THE CONTRACTOR SHALL NOTIFY THE PROJECT ENGINEER IN WRITING OF ALL TRAFFIC RESTRICTIONS AND UPCOMING MAINTENANCE OF TRAFFIC CHANGES. THE CONTRACTOR SHALL ENSURE THE WRITTEN NOTIFICATION IS SUBMITTED IN A TIMELY MANNER TO ALLOW THE PROJECT ENGINEER TO MEET THE REQUIRED TIME FRAMES SET FORTH IN THE TABLE BELOW TO INFORM THE OFFICE OF COMMUNICATIONS. THIS NOTIFICATION SHALL BE RECEIVED BY THE PROJECT ENGINEER PRIOR TO THE PHYSICAL SETUP OF ANY APPLICABLE SIGNS OR MESSAGE BOARDS. INFORMATION SHOULD INCLUDE, BUT IS NOT LIMITED TO, ALL CONSTRUCTION ACTIVITIES THAT IMPACT OR INTERFERE WITH TRAFFIC AND SHALL LIST THE SPECIFIC LOCATION, TYPE OF WORK, ROAD STATUS, DATE AND TIME OF RESTRICTION, DURATION OF RESTRICTION, NUMBER OF LANES MAINTAINED, NUMBER OF LANES CLOSED, DETOUR ROUTES, IF APPLICABLE, AND ANY OTHER INFORMATION REQUESTED BY THE PROJECT ENGINEER.

NOTICE TO OFFICE OF COMMUNICATIONS TIME TABLE

ITEM	DURATION	NOTICE DUE TO OFFICE
ROAD CLOSURE	>= 2 WEEKS	21 CALENDAR DAYS PRIOR TO CLOSURE
	12 HRS.-2 DAYS	14 CALENDAR DAYS PRIOR TO CLOSURE
	<12 WEEKS	4 BUSINESS DAYS PRIOR TO CLOSURE
ROAD CLOSURE	>= 2 WEEKS	14 CALENDAR DAYS PRIOR TO CLOSURE
	< 2 WEEKS	2 BUSINESS DAYS PRIOR TO CLOSURE
START OF CONSTRUCTION	N/A	14 CALENDAR DAYS PRIOR TO CLOSURE
TRAFFIC PATTERN CHANGE	N/A	14 CALENDAR DAYS PRIOR TO CLOSURE

ANY UNFORESEEN CONDITIONS NOT SPECIFIED IN THE PLANS REQUIRING TRAFFIC RESTRICTIONS SHALL ALSO BE REPORTED TO THE PROJECT ENGINEER USING THE NOTICE TO OFFICE OF COMMUNICATIONS TIME TABLE.

ITEM 614 WORK ZONE PAVEMENT MARKINGS

IT IS ANTICIPATED THAT TRAFFIC WILL NEED TO BE PERMITTED ON THE MILLED SURFACE AS WELL AS THE INTERMEDIATE SURFACE. AS SUCH, WORK ZONE MARKINGS ARE PROVIDED BELOW AND SHALL BE APPLIED PRIOR TO OPENING TO TRAFFIC. THE MILLED SURFACE SHALL BE COVERED BY THE INTERMEDIATE SURFACE WITHIN 2 DAYS OF PLANING. THE CONTRACTOR SHALL PLACE ALL WORK ZONE PAVEMENT MARKINGS OR PERMANENT MARKINGS UPON COMPLETION OF THE ASPHALT SURFACE COURSE PRIOR TO OPENING THE ROADWAY TO TRAFFIC.

THE FOLLOWING QUANTITIES HAVE BEEN CARRIED TO THE GENERAL SUMMARY FOR USE AT THE LOCATIONS IDENTIFIED BY THE ENGINEER FOR WORK ZONE PAVEMENT MARKINGS PER THE REQUIREMENTS OF C&MS 614.11:

PAVEMENT REPAIR

- ITEM 614 - 0.4 MILE WORK ZONE, CENTER LINE (DOUBLE SOLID), CLASS I, 642 PAINT
- ITEM 614 - 60 FEET WORK ZONE, STOP LINE, CLASS I, 642 PAINT
- ITEM 614 - 3 EACH WORK ZONE, LANE ARROW, CLASS I, 642 PAINT
- ITEM 614 - 99 FEET WORK ZONE, CHANNELIZING LINE, CLASS I, 642 PAINT
- ITEM 614 - 0.03 MILE WORK ZONE, LANE LINE, CLASS I, 642 PAINT
- ITEM 614 - 1 EACH WORK ZONE, SCHOOL SYMBOL MARKING, 120", CLASS I, 642 PAINT
- ITEM 614 - 153 EACH WORK ZONE CROSSWALK LINE, CLASS I, 24", 642 PAINT

MILLED/PLANED SURFACE

- ITEM 614 - 1.3 MILE WORK ZONE, CENTER LINE (DOUBLE SOLID), CLASS I, 642 PAINT
- ITEM 614 - 1143 FEET WORK ZONE, DOTTED LINE, 4", CLASS I, 642 PAINT
- ITEM 614 - 649 FEET WORK ZONE, DOTTED LINE, 8" CLASS I, 642 PAINT
- ITEM 614 - 562 FEET WORK ZONE, STOP LINE, CLASS I, 642 PAINT
- ITEM 614 - 60 EACH WORK ZONE, LANE ARROW, CLASS I, 642 PAINT
- ITEM 614 - 2694 FEET WORK ZONE, CHANNELIZING LINE, CLASS I, 642 PAINT
- ITEM 614 - 1.01 MILE WORK ZONE, LANE LINE, CLASS I, 642 PAINT

ITEM 614 WORK ZONE PAVEMENT MARKINGS, CONT.

- ITEM 614 - 1.01 MILE WORK ZONE, LANE LINE, CLASS I, 642 PAINT
- ITEM 614 - 4 EACH WORK ZONE, SCHOOL SYMBOL MARKING, 120", CLASS I, 642 PAINT
- ITEM 614 - 54 EACH WORK ZONE CROSSWALK LINE, CLASS I, 12", 642 PAINT
- ITEM 614 - 3555 EACH WORK ZONE CROSSWALK LINE, CLASS I, 24", 642 PAINT
- INTERMEDIATE COURSE**
- ITEM 614 - 1.3 MILE WORK ZONE, CENTER LINE (DOUBLE SOLID), CLASS I, 642 PAINT
- ITEM 614 - 1143 FEET WORK ZONE, DOTTED LINE, 4", CLASS I, 642 PAINT
- ITEM 614 - 649 FEET WORK ZONE, DOTTED LINE, 8" CLASS I, 642 PAINT
- ITEM 614 - 562 FEET WORK ZONE, STOP LINE, CLASS I, 642 PAINT
- ITEM 614 - 60 EACH WORK ZONE, LANE ARROW, CLASS I, 642 PAINT
- ITEM 614 - 2694 FEET WORK ZONE, CHANNELIZING LINE, CLASS I, 642 PAINT
- ITEM 614 - 1.01 MILE WORK ZONE, LANE LINE, CLASS I, 642 PAINT
- ITEM 614 - 4 EACH WORK ZONE, SCHOOL SYMBOL MARKING, 120", CLASS I, 642 PAINT
- ITEM 614 - 54 EACH WORK ZONE CROSSWALK LINE, CLASS I, 12", 642 PAINT
- ITEM 614 - 3555 EACH WORK ZONE CROSSWALK LINE, CLASS I, 24", 642 PAINT
- SURFACE COURSE**
- ITEM 614 - 1.3 MILE WORK ZONE, CENTER LINE (DOUBLE SOLID), CLASS III, 642 PAINT
- ITEM 614 - 1143 FEET WORK ZONE, DOTTED LINE, 4", CLASS III, 642 PAINT
- ITEM 614 - 649 FEET WORK ZONE, DOTTED LINE, 8" CLASS III, 642 PAINT
- ITEM 614 - 562 FEET WORK ZONE, STOP LINE, CLASS III, 642 PAINT
- ITEM 614 - 60 EACH WORK ZONE, LANE ARROW, CLASS III, 642 PAINT
- ITEM 614 - 2694 FEET WORK ZONE, CHANNELIZING LINE, CLASS III, 642 PAINT
- ITEM 614 - 1.01 MILE WORK ZONE, LANE LINE, CLASS III, 642 PAINT
- ITEM 614 - 4 EACH WORK ZONE, SCHOOL SYMBOL MARKING, 120", CLASS III, 642 PAINT
- ITEM 614 - 54 EACH WORK ZONE CROSSWALK LINE, CLASS III, 12", 642 PAINT
- ITEM 614 - 3555 EACH WORK ZONE CROSSWALK LINE, CLASS III, 24", 642 PAINT

SOLE SOURCE AQUIFER PROTECTION

THIS PROJECT IS LOCATED WITHIN THE GREATER MIAMI SOLE SOURCE AQUIFER. USE PROPER CONTAINMENT AND DIKING IN REFUELING AREAS. DO NOT STORE FUELS, TOXIC/HAZARDOUS MATERIALS, AND CHEMICALS NEAR DRAINAGE WAYS, DITCHES, OR STREAMS. MAINTAIN A SPILL KIT ON-SITE THROUGHOUT CONSTRUCTION ACTIVITIES. IMMEDIATELY MITIGATE ANY EVENT, SUCH AS A SPILL OF FUELS, OILS, OR CHEMICALS THAT COULD THREATEN TO CONTAMINATE THE DRINKING WATER SUPPLY. REPORT ALL SPILLS OR EVENTS TO THE HAMILTON COUNTY EMERGENCY DEPARTMENT AT 513-263-8200. IF THE SPILL IS A REPORTABLE AMOUNT (PER OHIO EPA'S RELEASE REPORTING REQUIREMENTS), CONTACT THE CINCINNATI FIRE DEPARTMENT STATION 31 - OAKLEY AT 513-352-2344 OR THE OHIO EPA'S SPILLS HOTLINE 1-800-282-9378 FOR THE CLEAN-UP OF THE SPILL.

ITEM SPECIAL - CONSULTANT FOR CONCRETE QUALITY CONTROL INCLUDING TESTING AND INSPECTION

ALL CONCRETE SHALL BE TESTED. ALL TESTING, INSPECTION AND QUALITY CONTROL FOR CONCRETE, NOT INCLUDED UNDER QC/QA PAY ITEMS, SHALL BE THE RESPONSIBILITY OF THE CONTRACTOR. THE CONTRACTOR SHALL PROVIDE A CONCRETE TESTING CONSULTANT WITH PREVIOUS EXPERIENCE AND FAMILIARITY IN ODOT PROCEDURES, CONCRETE TESTING REQUIREMENTS AND CONCRETE TESTING DOCUMENTATION. AT LEAST 30 DAYS PRIOR TO CONCRETE PLACEMENT, SUBMIT TO THE ENGINEER FOR APPROVAL, THE PROPOSED CONCRETE TESTING CONSULTANT ALONG WITH THE RESUMES OF THE PROPOSED TESTING PERSONNEL.

TESTING CONCRETE FOR STRUCTURES AND PORTLAND CEMENT CONCRETE PAVEMENT SHALL BE PERFORMED AS OUTLINED IN CMS SPECIFICATIONS 455 RESPECTIVELY.

THROUGH THE CONTRACTOR, THE CONSULTANT SHALL BE RESPONSIBLE FOR ENSURING THAT ALL CONCRETE PLACED IS IN ACCORDANCE WITH THE SPECIFICATIONS. SUCH WORK SHALL BE IN ACCORDANCE WITH THE APPLICABLE CONSTRUCTION AND MATERIAL SPECIFICATIONS AND THE ODOT CONSTRUCTION INSPECTION MANUAL OF PROCEDURES FOR CONCRETE. THE CONCRETE CONSULTANT SHALL PROVIDE THE NECESSARY TRAINED TECHNICIAN(S), ALL EQUIPMENT, AND SHALL FURNISH THE PROJECT ENGINEER WITH TWO (2) COPIES OF ALL TEST RESULTS WITHIN 24 HOURS AFTER COMPLETION OF CONCRETE PLACEMENT.

THE TECHNICIAN SHALL BE ACI LEVEL 1 CERTIFIED AND WILL BE REQUIRED TO DEMONSTRATE HIS/HER COMPETENCE AND EXPERIENCE LEVELS TO THE ENGINEER PRIOR TO BEGINNING WORK. THE ENGINEER WILL ORDER THE CONTRACTOR TO REPLACE ANY TECHNICIAN THAT IS NOT VERSED IN THE REQUIRED TESTING PROCEDURE.

THE TECHNICIAN SHALL VERBALLY NOTIFY THE ODOT PROJECT ENGINEER OF ANY FAILING TEST AND SHALL SUBMIT FOLLOW-UP WRITTEN NOTIFICATION TO THE PROJECT ENGINEER OF REMEDIAL ACTION(S) TAKEN. TESTS SHALL BE TAKEN AS SPECIFIED WITHIN THE CONSTRUCTION AND MATERIAL SPECIFICATIONS, CONCRETE MANUAL OR APPROPRIATE SUPPLEMENTAL SPECIFICATION AS LISTED IN THE PROPOSAL GOVERNING THE PROJECT. IT SHALL BE THE SOLE RESPONSIBILITY OF THE CONTRACTOR TO MAKE IMMEDIATE CORRECTIONS OR ADJUSTMENTS TO THE CONCRETE MIX VIA DIRECT COMMUNICATION WITH THE CONCRETE SUPPLIER'S PLANT PERSONNEL TO MAINTAIN UNINTERRUPTED COMPLIANCE WITH THE SPECIFICATIONS UPON NOTIFICATION OF CONCRETE MIX NON-COMPLIANCE BY THE CONSULTANT TECHNICIAN. THE PROJECT ENGINEER MAY REQUIRE MORE FREQUENT TESTING AS CONDITIONS WARRANT.

UPON COMPLETION OF DAILY CONCRETE PLACEMENT(S), THE CONCRETE CONSULTANT SHALL PROVIDE THE PROJECT ENGINEER WITH DAILY TEST REPORTS, TE-45'S, INSPECTORS DAILY REPORT AND SUPPORTING DOCUMENTATION FOR EACH ITEM OF CONCRETE WORK PERFORMED SEPARATED BY MIX DESIGN. SUBSEQUENTLY, UPON COMPLETION OF AN ENTIRE CONCRETE SPECIFICATION ITEM, THE CONCRETE CONSULTANT SHALL ALSO PROVIDE THE PROJECT ENGINEER WITH TWO (2) COPIES OF AN ADDITIONAL INSPECTION REPORT BY A REGISTERED PROFESSIONAL ENGINEER, STATE OF OHIO, WHICH CONTAINS THE TESTING-RESULTS SUMMARY FOR EACH ITEM BY CONTRACT REFERENCE NUMBER AND THE CONSULTANT'S CONCLUSIONS RELATIVE TO SPECIFICATION COMPLIANCE FOR ALL CONCRETE-TESTING WORK.

THE ODOT PROJECT ENGINEER RESERVES THE RIGHT TO MAKE UNANNOUNCED QUALITY-CONTROL TESTS TO VERIFY PROCEDURES USED AND RESULTS BEING OBTAINED BY THE CONTRACTOR.

THE CONCRETE TECHNICIAN SHALL WORK UNDER THE DIRECTION OF A REGISTERED PROFESSIONAL ENGINEER, STATE OF OHIO, WHO WILL MONITOR THE CONCRETE TEST RESULTS. THE FINAL INSPECTION REPORTS FOR EACH COMPLETED ITEM SHALL BE SIGNED BY A REGISTERED PROFESSIONAL ENGINEER, STATE OF OHIO, CERTIFYING THAT ALL CONCRETE TESTS PROVIDED BY THE CONTRACTOR MET APPLICABLE CONTRACT REQUIREMENTS. A FINAL REPORT ISSUED BY THE CONSULTING FIRM SHALL CONTAIN A CERTIFIED STATEMENT OF COMPLIANCE WITH ODOT SPECIFICATIONS AND ANY OTHER CONCLUSIONS REGARDING THE CONCRETE MATERIALS INCORPORATED INTO THE PROJECT. SUCH STATEMENT SHALL BE SIGNED BY A REGISTERED PROFESSIONAL ENGINEER, STATE OF OHIO. AND, THE CONCRETE CONSULTANT SHALL BE REQUIRED TO ATTEND MONTHLY PROGRESS MEETINGS AS REQUIRED BY THE PROJECT ENGINEER.

ADDITIONALLY, THE CONTRACTOR SHALL BE REQUIRED TO KEEP A POSTED LIST OF BEAM AND CYLINDER IDENTIFICATION NUMBERS FOR THE PURPOSE OF IDENTIFYING THE CORRESPONDING PLACEMENT LOCATION AND CONCRETE SPECIFICATION ITEM.

PAYMENT SHALL BE BID AS LUMP SUM FOR ITEM SPECIAL MISC.: CONSULTANT FOR CONCRETE QUALITY CONTROL INCLUDING TESTING AND INSPECTION. THE ITEM WILL BE PAID FOR AS FOLLOWS:
UPON APPROVAL OF CONSULTANT 20%
PROGRESSIVE EQUIVALENT PAYMENTS 50%
UPON SUBMISSION OF FINAL REPORT 30%.

THE TECHNICIAN SHALL HAVE THE FULL EFFECT AND AUTHORITY OF AN ODOT PROJECT INSPECTOR IN DETERMINING ACCEPTABILITY OF MATERIAL AND CONCRETE PLACEMENT PRACTICES.

DESIGN AGENCY	
TEC Engineering, Inc.	
TEC Engineering, Inc.	
7888 Central Park Blvd.	
Mason, OH 45040	
DESIGNER	AFS
REVIEWER	
PROJECT ID	DGO 4-10-2023
SHEET	115752
TOTAL	5 42

HAM-561-3.09

MODEL: GG1 PAPER SIZE: 34x22 (in.) DATE: 9/8/2023 TIME: 3:31:47 PM USER: dosborn
 \\10.1.14.projects\2023\Projects\2039_JMA Consultants\006 Urban Paving - SR 561 Norwood\115752\404-Engineering\Roadway\Sheets\115752_GG001.dgn

SHEET NUM.											PART.		ITEM	ITEM EXT	GRAND TOTAL	UNIT	DESCRIPTION	SEE SHEET NO.
4	8	20	21	22	23						01/S> 2/05	02/S<2/ 05/NRWD						
	1,366											1,366	202	30000	1,366	SF	ROADWAY	
	261											261	202	32000	261	FT	WALK REMOVED CURB REMOVED	
	402											402	608	12000	402	SF	5" CONCRETE WALK	
	1,046											1,046	608	52000	1,046	SF	CURB RAMP	
												LS	SPECIAL	69098400	LS		SPECIAL - CONSULTANT FOR CONCRETE QUALITY CONTROL INCLUDING TESTING AND INSPECTION	5
												1,000	832	30000	1,000	EACH	EROSION CONTROL	
												50	611	98630	50	EACH	DRAINAGE	
50												143	611	99654	143	EACH	CATCH BASIN ADJUSTED TO GRADE MANHOLE ADJUSTED TO GRADE	4 4
												1,075	253	02000	1,075	CY	PAVEMENT	
	23											23	253	02001	23	CY	PAVEMENT REPAIR PAVEMENT REPAIR, AS PER PLAN	4 3
	50,466											50,466	254	01000	50,466	SY	PAVEMENT PLANING, ASPHALT CONCRETE, 3"	
	12											12	255	10010	12	SY	PAVEMENT REPAIR, AS PER PLAN FULL DEPTH PAVEMENT REMOVAL AND RIGID REPLACEMENT, CLASS QC1	4
	5,804											5,804	407	20000	5,804	GAL	NON-TRACKING TACK COAT	
	336											336	442	20000	336	CY	ASPHALT CONCRETE SURFACE COURSE, 12.5 MM, TYPE A (448), PG76-22	
	1,766											1,766	442	20050	1,766	CY	ASPHALT CONCRETE SURFACE COURSE, 12.5 MM, TYPE B (448), PG70-22	
	2,102											2,102	442	20100	2,102	CY	ASPHALT CONCRETE INTERMEDIATE COURSE, 9.5 MM, TYPE A (448), PG64-28	
	51											51	609	26000	51	FT	CURB, TYPE 6	
83												83	638	10800	83	EACH	WATER WORK	
												124	621	54000	124	EACH	VALVE BOX ADJUSTED TO GRADE	4
												124	621	00100	124	EACH	TRAFFIC CONTROL	
	124											124	621	00100	124	EACH	RAISED PAVEMENT MARKER REMOVED RPM	
	124											54	642	00630	54	FT	CROSSWALK LINE, 24", TYPE 1	
					54							1.01	644	00200	1.01	MILE	LANE LINE, 4"	
												1.3	644	00300	1.3	MILE	CENTER LINE	
												2,492	644	00400	2,492	FT	CHANNELIZING LINE, 8"	
												562	644	00500	562	FT	STOP LINE	
												54	644	00620	54	FT	CROSSWALK LINE, 12"	
												3,555	644	00630	3,555	FT	CROSSWALK LINE, 24"	
												445	644	00700	445	FT	TRANSVERSE/DIAGONAL LINE	
												4	644	01120	4	EACH	SCHOOL SYMBOL MARKING, 120"	
												45	644	01200	45	FT	PARKING LOT STALL MARKING, 4"	
												52	644	01300	52	EACH	LANE ARROW	
												4	644	01400	4	EACH	WORD ON PAVEMENT, 72"	
												1,143	644	01500	1,143	FT	DOTTED LINE, 4"	
												649	644	01514	649	FT	DOTTED LINE, 8"	
												110	644	00900	110	SF	ISLAND MARKING	
												0.06	646	10100	0.06	MILE	LANE LINE, 4"	
												0.06	646	10200	0.06	MILE	CENTER LINE	
												201	646	10300	201	FT	CHANNELIZING LINE, 8"	
												2	646	20300	2	EACH	LANE ARROW	
												215	646	20506	215	FT	DOTTED LINE, 8"	
																	TRAFFIC SIGNALS	
	2											2	625	31600	2	EACH	PULL BOX, MISC.: PULL BOX ADJUSTED TO GRADE	4
												15	632	26501	15	EACH	DETECTOR LOOP, AS PER PLAN	4
												15	632	27200	15	EACH	LOOP DETECTOR TIE IN	4

GENERAL SUMMARY

DESIGN AGENCY
TEC Engineering, Inc.
 PLAN PREPARED BY:
 TEC Engineering, Inc.
 7288 Central Park Drive
 Mason, OH 45040

DESIGNER
 AFS


REVIEWER
 DGO

PROJECT ID
 4-10-2023

SHEET TOTAL
 115752
 6 | 42

SHEET NUM.						PART.		ITEM	ITEM EXT	GRAND TOTAL	UNIT	DESCRIPTION	SEE SHEET NO.
4	8	20	21	22	23	01/S> 2/05	02/S<2/ 05/NRWD						
												MAINTENANCE OF TRAFFIC	
						300		614	11110	300	HOUR	LAW ENFORCEMENT OFFICER WITH PATROL CAR FOR ASSISTANCE	5
							2.05	614	20100	2.05	MILE	WORK ZONE LANE LINE, CLASS I, 4", 642 PAINT	5
							1.01	614	20550	1.01	MILE	WORK ZONE LANE LINE, CLASS III, 4", 642 PAINT	5
							3	614	21100	3	MILE	WORK ZONE CENTER LINE, CLASS I, 642 PAINT	5
							1.3	614	21550	1.3	MILE	WORK ZONE CENTER LINE, CLASS III, 642 PAINT	5
							5,487	614	23200	5,487	FT	WORK ZONE CHANNELIZING LINE, CLASS I, 8", 642 PAINT	5
							2,694	614	23680	2,694	FT	WORK ZONE CHANNELIZING LINE, CLASS III, 8", 642 PAINT	5
							2,286	614	24200	2,286	FT	WORK ZONE DOTTED LINE, CLASS I, 4", 642 PAINT	5
							1,298	614	24204	1,298	FT	WORK ZONE DOTTED LINE, CLASS I, 8", 642 PAINT	5
							1,143	614	24610	1,143	FT	WORK ZONE DOTTED LINE, CLASS III, 4", 642 PAINT	5
							649	614	24614	649	FT	WORK ZONE DOTTED LINE, CLASS III, 8", 642 PAINT	5
							1,184	614	26200	1,184	FT	WORK ZONE STOP LINE, CLASS I, 642 PAINT	5
							562	614	26610	562	FT	WORK ZONE STOP LINE, CLASS III, 642 PAINT	5
							108	614	27050	108	FT	WORK ZONE CROSSWALK LINE, CLASS I, 12", 642 PAINT	5
							7,175	614	27060	7,175	FT	WORK ZONE CROSSWALK LINE, CLASS I, 24", 642 PAINT	
							54	614	27250	54	FT	WORK ZONE CROSSWALK LINE, CLASS III, 12", 642 PAINT	
							3,555	614	27260	3,555	FT	WORK ZONE CROSSWALK LINE, CLASS III, 24", 642 PAINT	
							123	614	30200	123	EACH	WORK ZONE ARROW, CLASS I, 642 PAINT	5
							60	614	30650	60	EACH	WORK ZONE ARROW, CLASS III, 642 PAINT	5
							9	614	31760	9	EACH	WORK ZONE SCHOOL SYMBOL MARKING, 120", CLASS I	5
							4	614	31770	4	EACH	WORK ZONE SCHOOL SYMBOL MARKING, 120", CLASS III, 642 PAINT	5
												INCIDENTALS	
						LS		614	11000	LS		MAINTAINING TRAFFIC	4
						LS		623	10000	LS		CONSTRUCTION LAYOUT STAKES AND SURVEYING	
						LS		624	10000	LS		MOBILIZATION	

GENERAL SUMMARY

DESIGN AGENCY

 TEC Engineering, Inc.
 PLAN PREPARED BY:
 TEC Engineering, Inc.
 7288 Central Parke Blvd.
 Mason, OH 45040

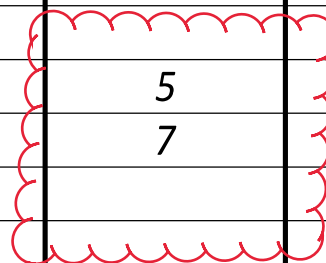
DESIGNER
 AFS

REVIEWER
 DGO 4-10-2023

PROJECT ID
 115752

SHEET TOTAL
 7 | 42

REF. NO.	SHEET NO.	LOCATION/STATION TO STATION	202		253	255	254	407		442			608		609	625		
			WALK REMOVED SF	CURB REMOVED FT	PAVEMENT REPAIR, AS PER PLAN CY	FULL DEPTH PAVEMENT REMOVAL AND RIGID REPLACEMENT, CLASS QCI, AS PER PLAN SY	PAVEMENT PLANING, ASPHALT CONCRETE, 3" SY	TACK COAT (.075 GAL/SY) GAL	TACK COAT (.04 GAL/SY) GAL	ASPHALT CONCRETE SURFACE COURSE, 12.5 MM, TYPE A (448), PG76-22 CY	ASPHALT CONCRETE SURFACE COURSE, 12.5 MM, TYPE B (448), PG70-22 CY	ASPHALT CONCRETE INTERMEDIATE COURSE, 9.5 MM, TYPE A (448), PG64-28 CY	5" CONCRETE WALK SQ FT	CURB RAMP SQ FT	CURB, TYPE 6 FT	PULL BOX, MISC.: PULL BOX ADJUSTED TO GRADE EACH		
	9	163+31 - 172+50					4011	301	160	167		167						
	10	172+50 - 175+00					2312	173	92	96		96						
	10	175+00 - 182+50					4189	314	168		175	175						
	11	182+50 - 192+50					5425	407	217		226	226						
	12	192+50 - 202+50					5078	381	203		212	212						
	13	202+50 - 212+50					6434	483	257		268	268						
	14	212+50 - 217+23					3669	275	147		153	153						
	15	245+76 - 248+50					1759	132	70	73		73						
	15	248+50 - 252+50					1800	135	72		75	75						
	16	252+50 - 262+50					4639	348	186		193	193						
	17	262+50 - 272+50					4877	366	195		203	203						
	18	272+50 - 282+50					4689	352	188		195	195						
	19	282+50 - 286+05					1584	119	63		66	66						
RAMP-38	37	SMITH ROAD & ROBERTSON AVENUE	142	18	2									142				
RAMP-39	37	SMITH ROAD & ROBERTSON AVENUE	116	26	3								30	81	10			
RAMP-73	39	CARTHAGE AVENUE & FELDMAN AVENUE	79	17	2								9	70	7			
RAMP-74	40	CARTHAGE AVENUE & HANNAFORD AVENUE	39	17	2								70	51	6	1		
RAMP-75	40	CARTHAGE AVENUE & WAYNE AVENUE	77	16	2								9	67				
RAMP-76	40	CARTHAGE AVENUE & WAYNE AVENUE	63	13	1								2	55				
RAMP-77	40	CARTHAGE AVENUE & HANNAFORD AVENUE	97	15	1.5								59	42	8			
RAMP-78	40	CARTHAGE AVENUE & HANNAFORD AVENUE	105	11	1								55	50				
RAMP-83	41	CARTHAGE AVENUE & CATHEDRAL/WORTH AVENUE	39										23	16		1		
RAMP-84	41	CARTHAGE AVENUE & CATHEDRAL/WORTH AVENUE	53	11	1								8	49				
RAMP-85	41	CARTHAGE AVENUE & CATHEDRAL/WORTH AVENUE	49	10	1								4	53				
RAMP-86	41	CARTHAGE AVENUE & CATHEDRAL/WORTH AVENUE	102	22	2								65	37	11			
RAMP-87	41	CARTHAGE AVENUE & CATHEDRAL/WORTH AVENUE	90	15	1.5								38	65	5			
RAMP-88	41	CARTHAGE AVENUE & CATHEDRAL/WORTH AVENUE	91	10	1								30	44	4			
RAMP-90	41	CARTHAGE AVENUE & QUATMAN AVENUE	113	23	2									113				
RAMP-93	42	CARTHAGE AVENUE & DALE ROAD	78	19		5								78				
RAMP-94	42	CARTHAGE AVENUE & DALE ROAD	33	18		7								33				
TOTALS CARRIED TO GENERAL SUMMARY			1366	261	23	12	50466	3786	2018	336	1766	2102	402	1046	51	2		



ROADWAY SUBSUMMARY

DESIGN AGENCY

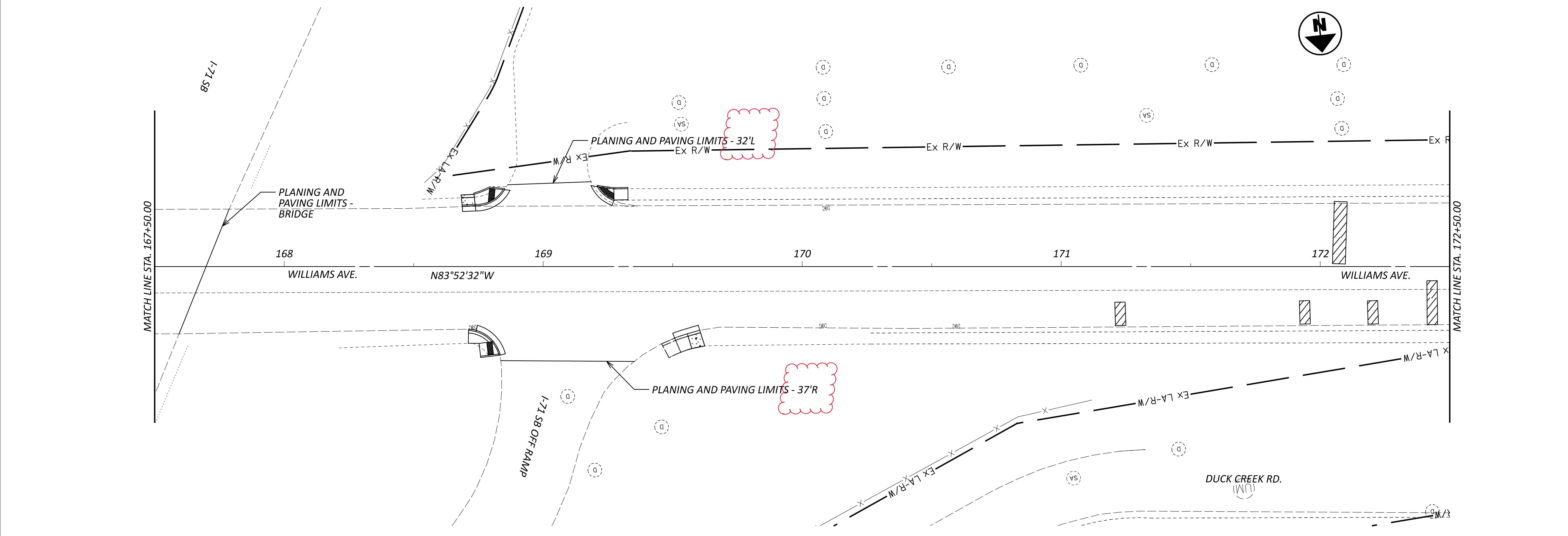
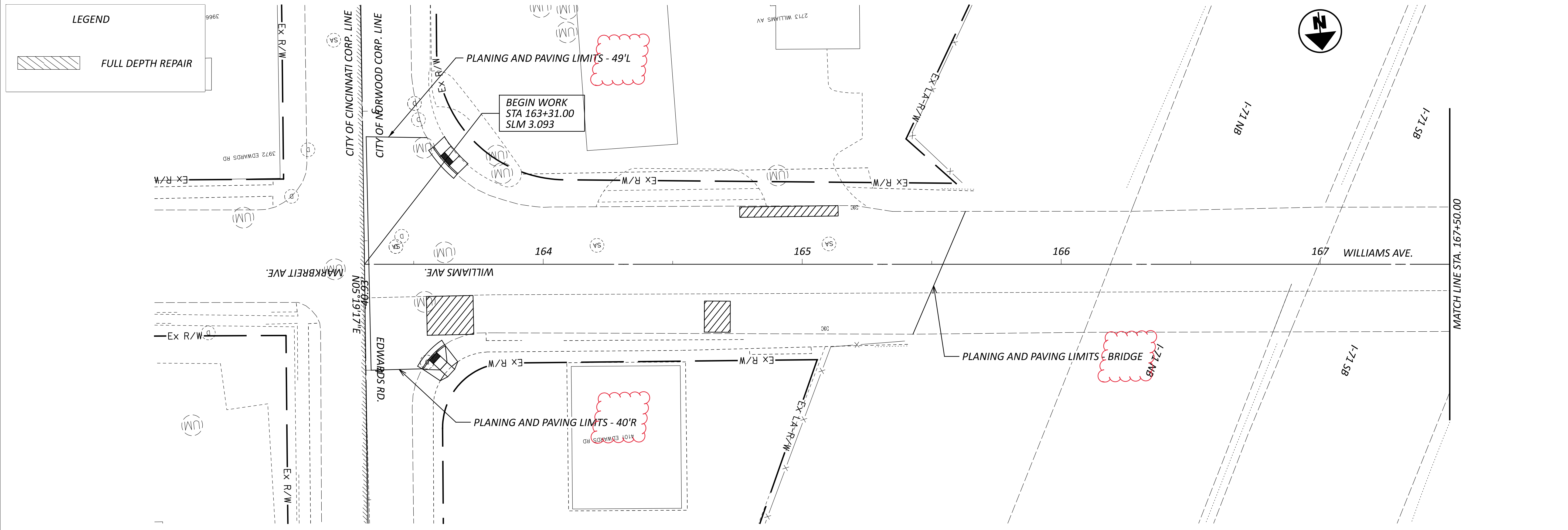
 TEC Engineering, Inc.
 7288 Central Park Blvd.
 Mason, OH 45040

DESIGNER
 EAS

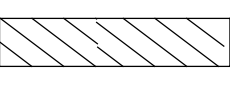
REVIEWER
 DGO 9-8-2023

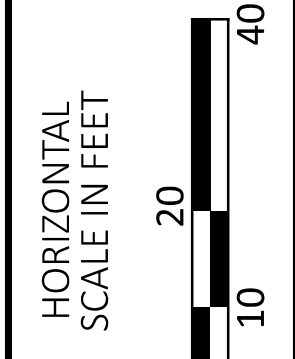
PROJECT ID
 115752

SHEET TOTAL
 8 42




LEGEND

 FULL DEPTH REPAIR

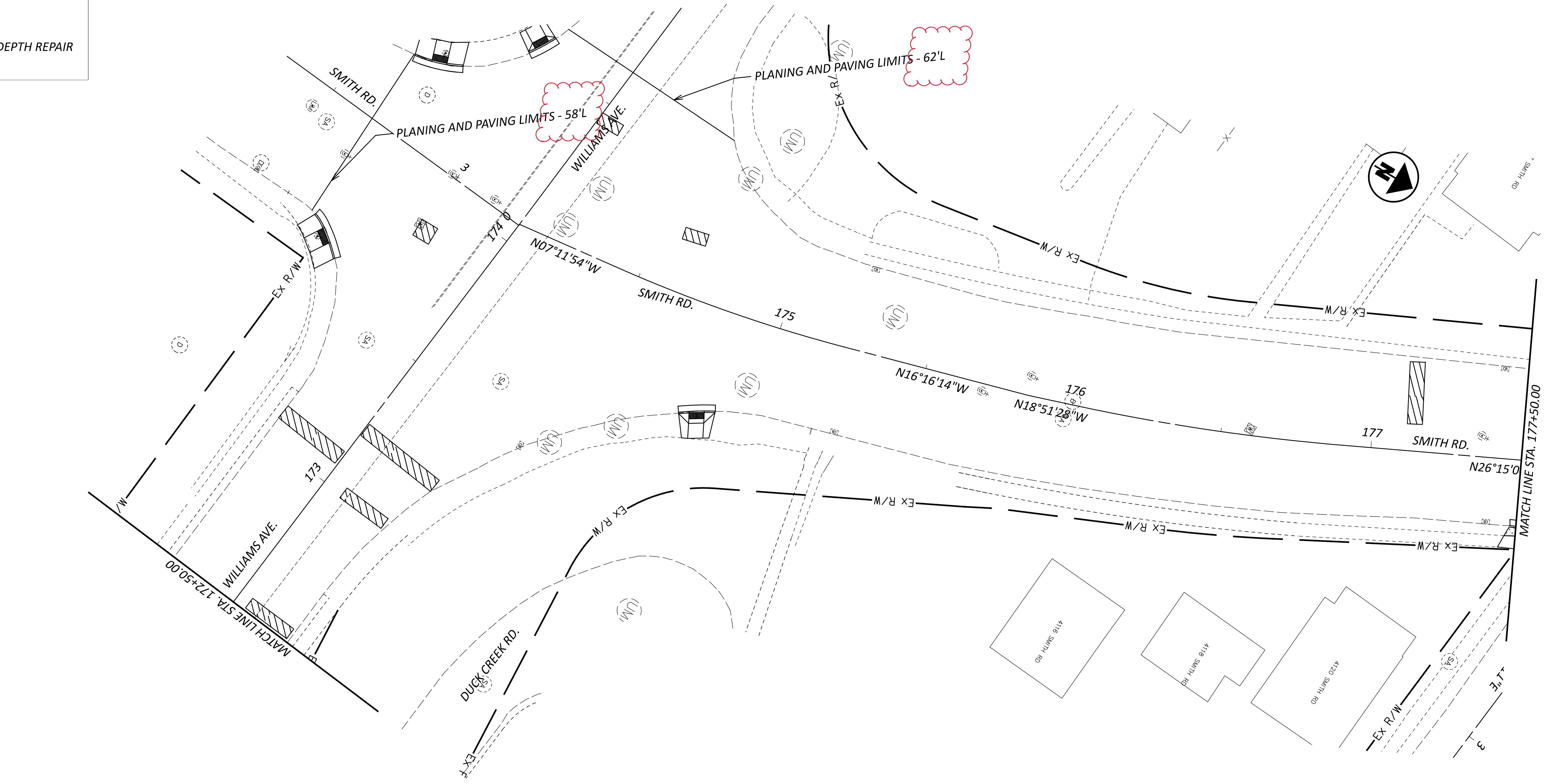
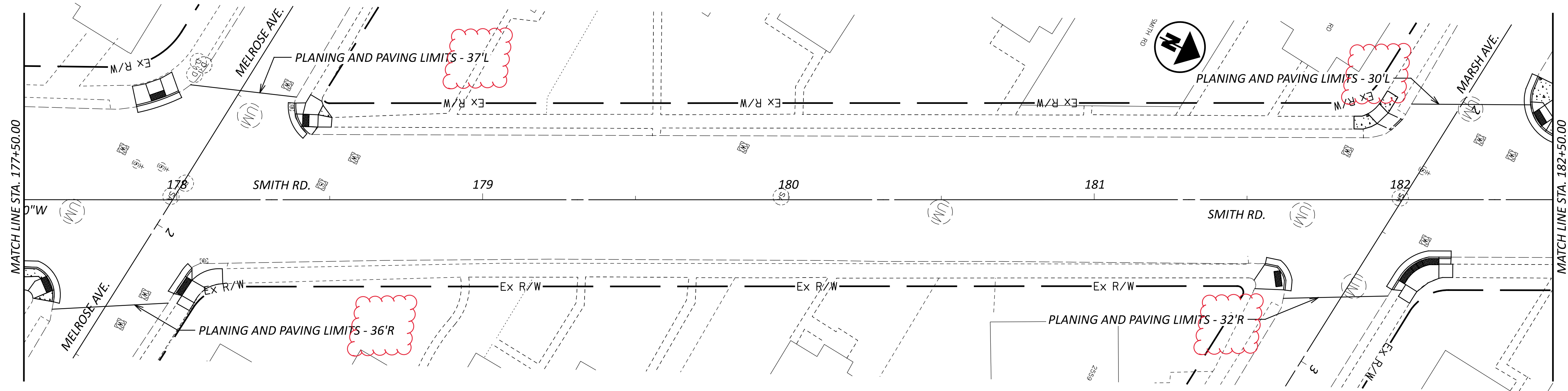


RESURFACING PLAN
STA. 163+20.00 TO STA. 172+50.00

DESIGN AGENCY	
	
DESIGNER	
VMG	
REVIEWER	
DGO 9-8-2023	
PROJECT ID	
115752	
SHEET	TOTAL
9	42

LEGEND

 FULL DEPTH REPAIR



DESIGN AGENCY

 TEC Engineering, Inc.
 PLAN PREPARED BY:
 TEC Engineering, Inc.
 7288 Central Park Blvd.
 Mason, OH 45040

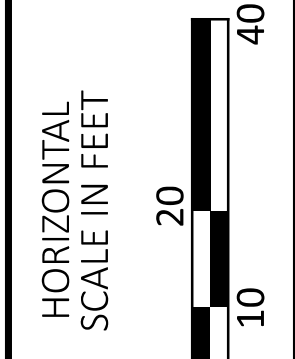
DESIGNER
 VMG

REVIEWER
 DGO 9-8-2023

PROJECT ID
 115752

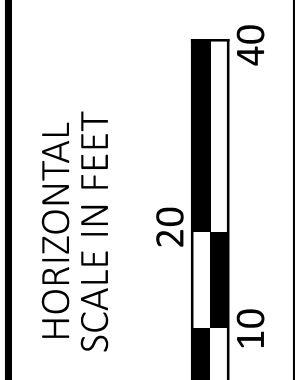
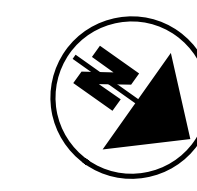
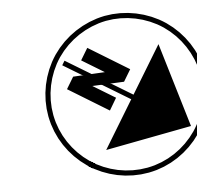
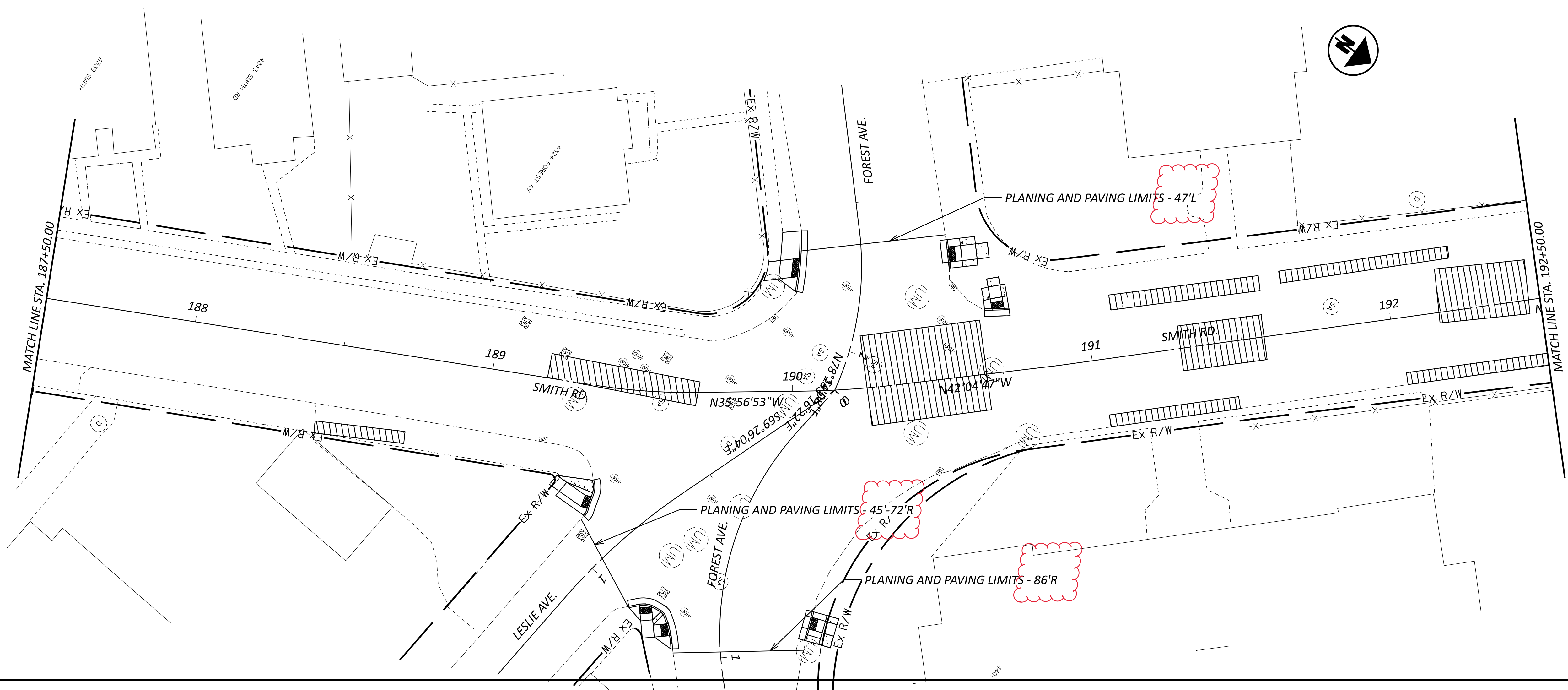
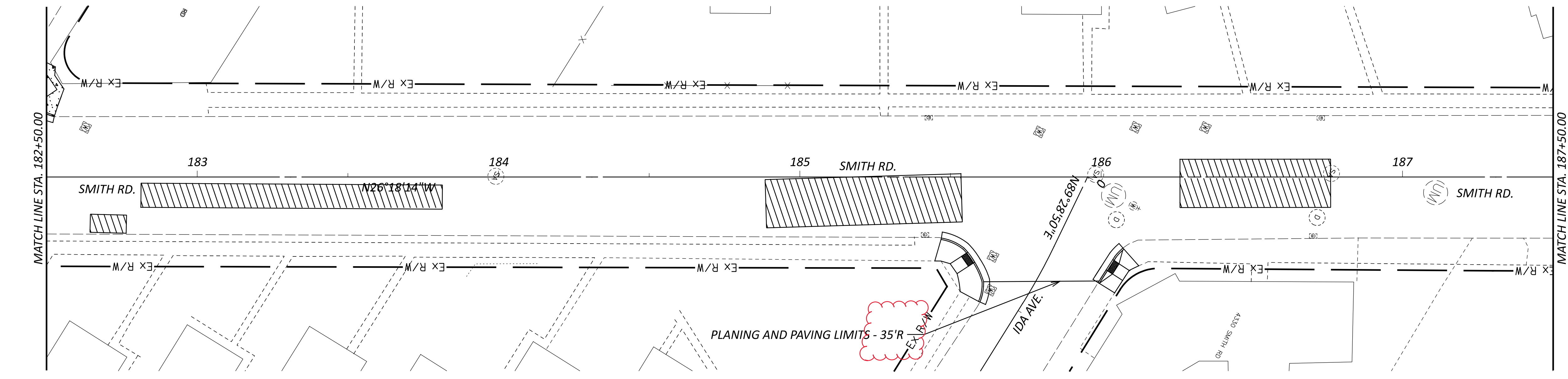
SHEET	TOTAL
10	42

RESURFACING PLAN
 STA. 172+50.00 TO STA. 182+50.00



LEGEND

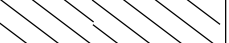
FULL DEPTH REPAIR



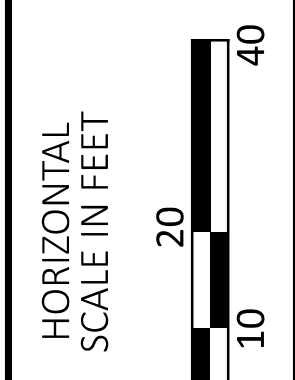
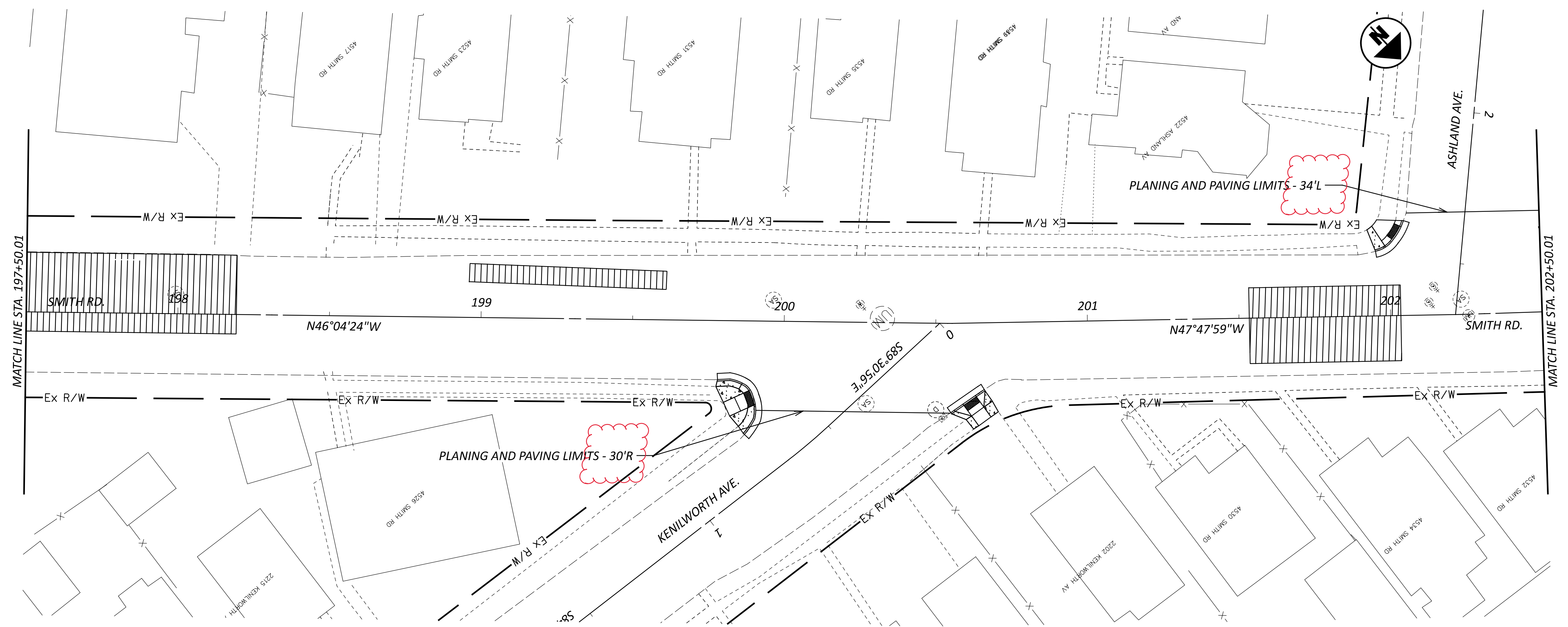
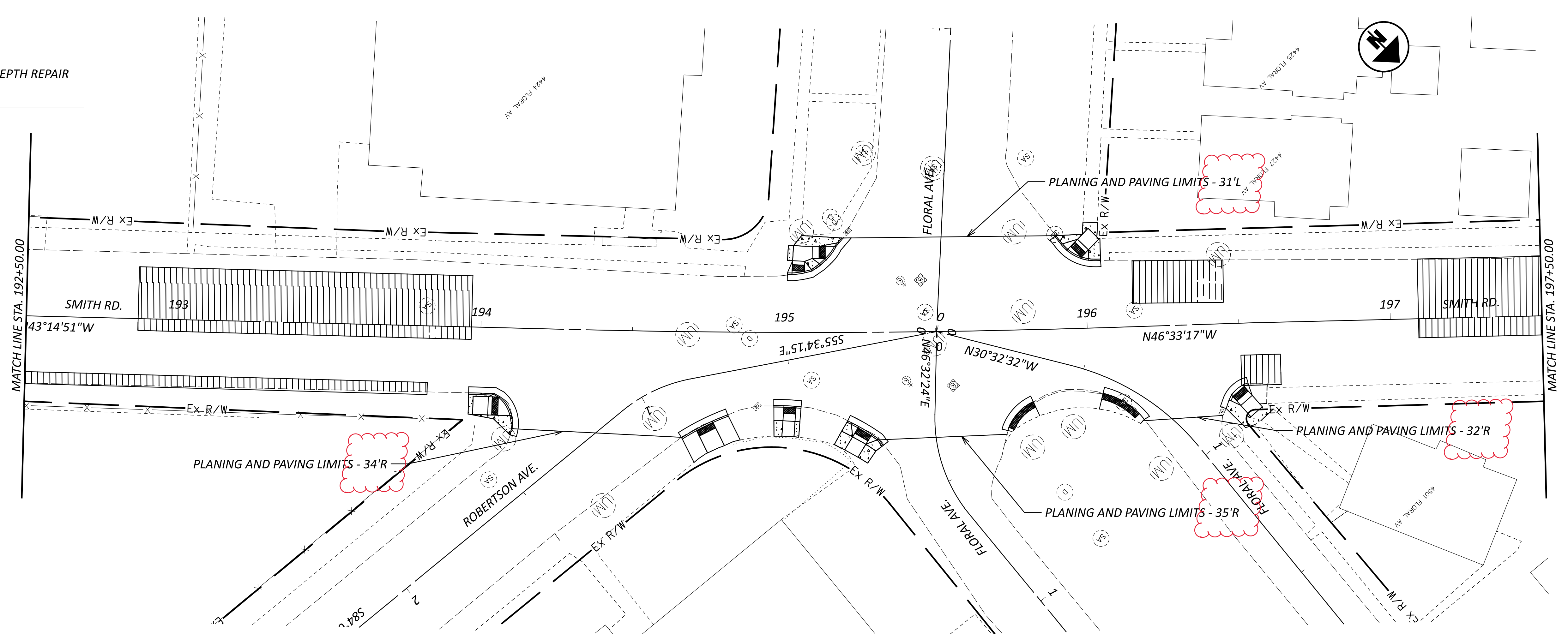
RESURFACING PLAN
STA. 182+50.00 TO STA. 192+50.00

DESIGN AGENCY	
TEC Engineering, Inc. TEC Engineering, Inc. 7288 Central Parke Blvd. Mason, OH 45040	
DESIGNER	
VMG	
REVIEWER	
DGO 9-8-2023	
PROJECT ID	
115752	
SHEET	TOTAL
11	42

LEGEND




FULL DEPTH REPAIR



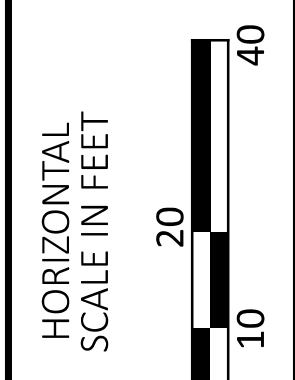
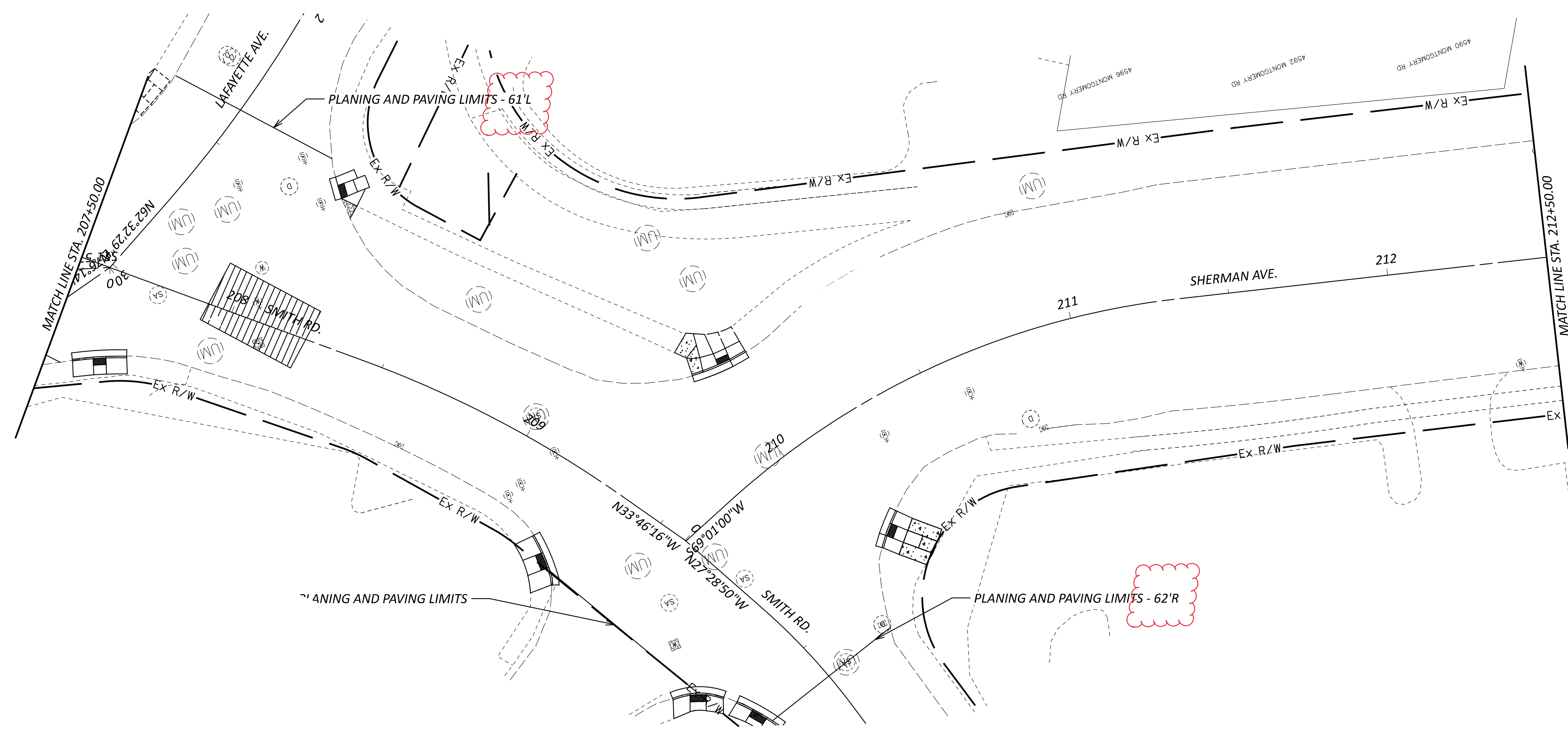
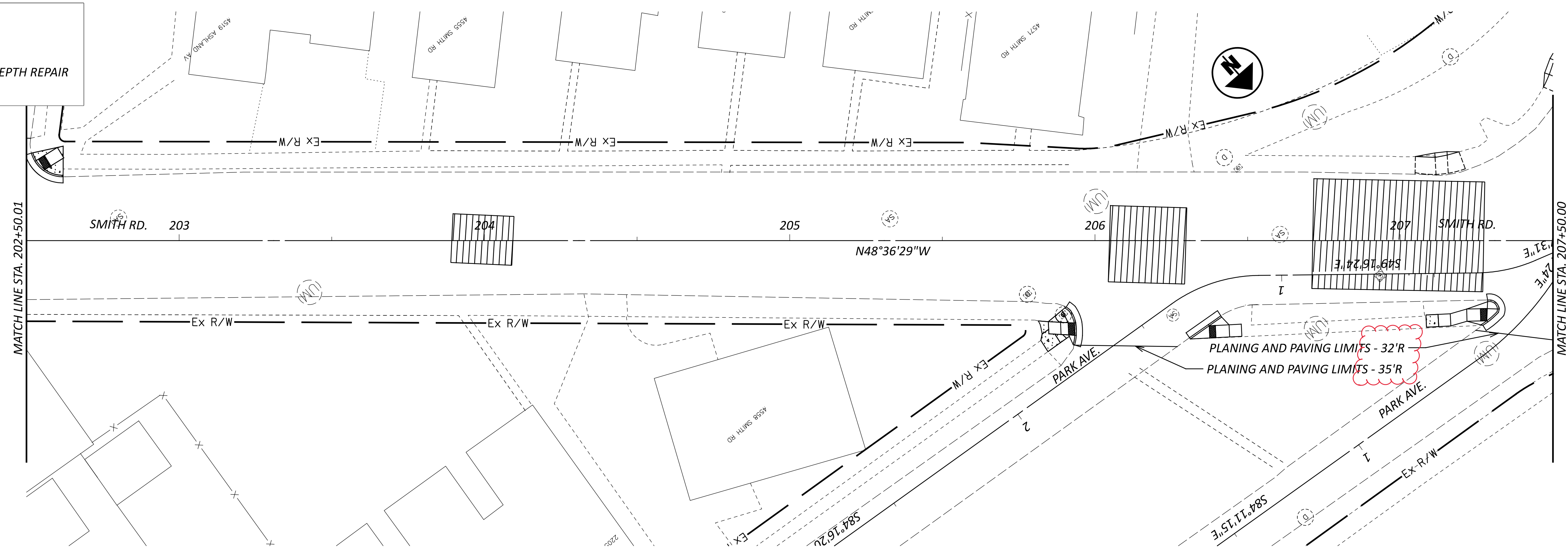
RESURFACING PLAN
STA. 192+50.00 TO STA. 202+50.00

DESIGN AGENCY	
TEC Engineering, Inc.	
TEC Engineering, Inc. P.O. Box 200 7288 Central Park Blvd. Mason, OH 45040	
DESIGNER	
VMG	
REVIEWER	
DGO 9-8-2023	
PROJECT ID	
115752	
SHEET	TOTAL
12	42

LEGEND



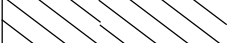
FULL DEPTH REPAIR



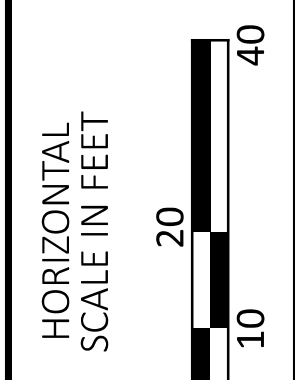
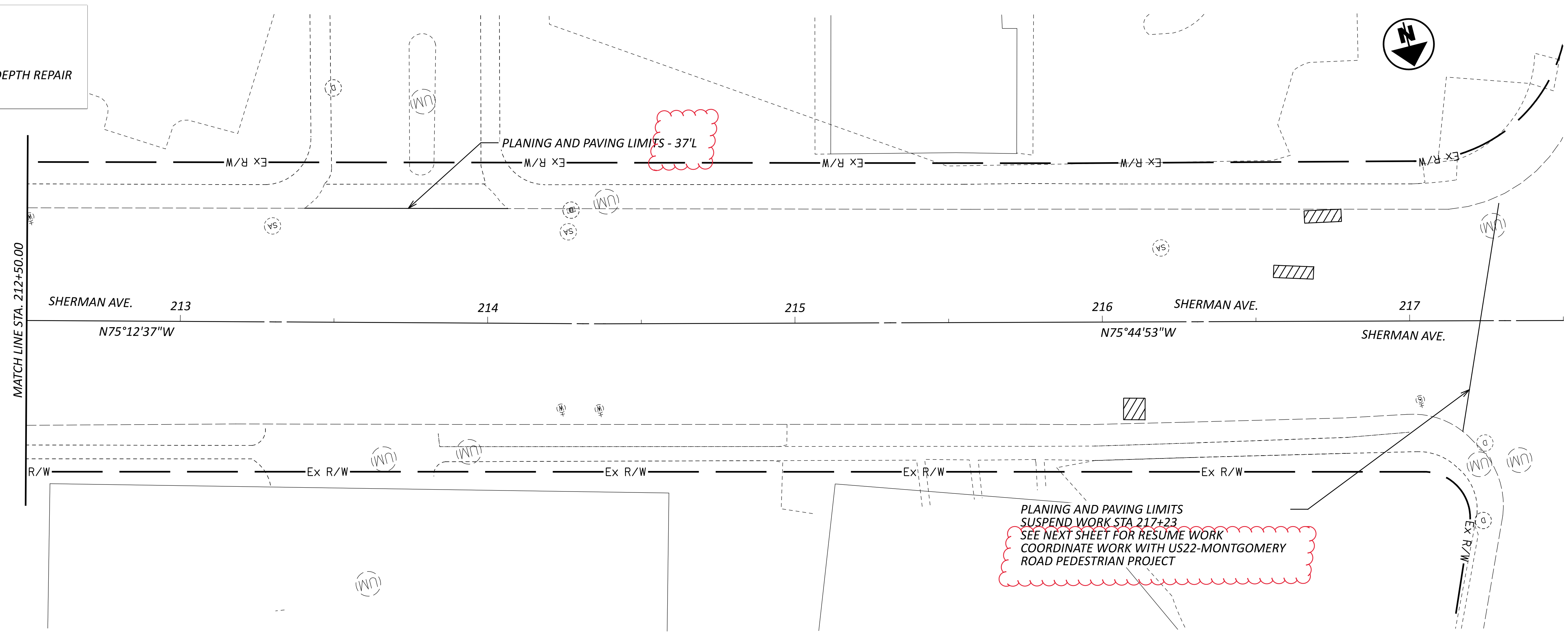
RESURFACING PLAN
STA. 202+50.00 TO STA. 212+50.00

DESIGN AGENCY	
TEC Engineering, Inc.	
TEC Engineering, Inc. 7288 Central Park Blvd. Mason, OH 45040	
DESIGNER	VMG
REVIEWER	DGO
PROJECT ID	115752
SHEET	TOTAL
13	42

LEGEND




FULL DEPTH REPAIR

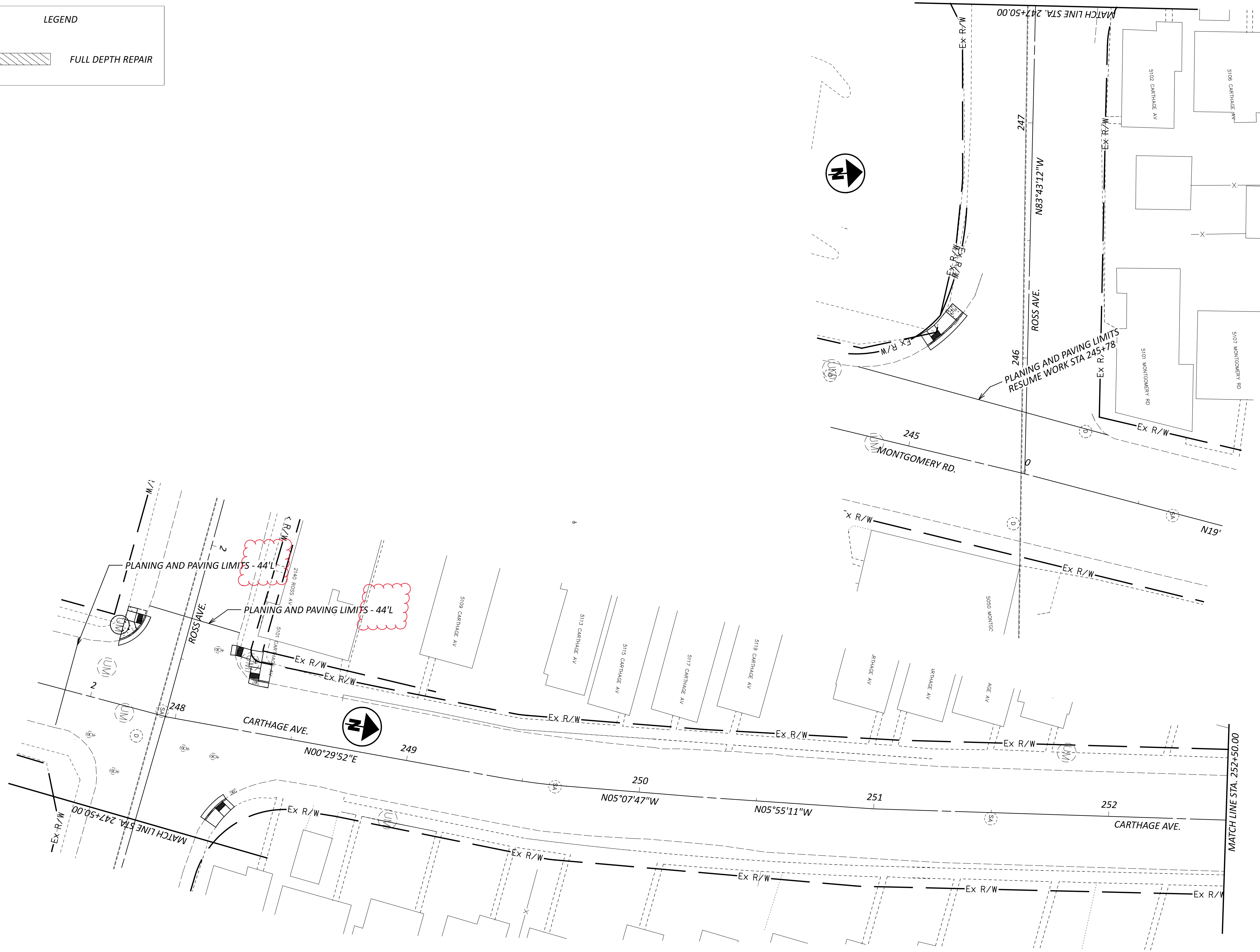


RESURFACING PLAN
STA. 212+50.00 TO STA. 217+80.00

DESIGN AGENCY	
TEC Engineering, Inc.	
TEC Engineering, Inc. PLAN PREPARED BY: TEC Engineering, Inc. 7288 Central Parke Blvd. Mason, OH 45040	
DESIGNER	
VMG	
REVIEWER	
DGO 9-8-2023	
PROJECT ID	
115752	
SHEET	TOTAL
14	42

LEGEND

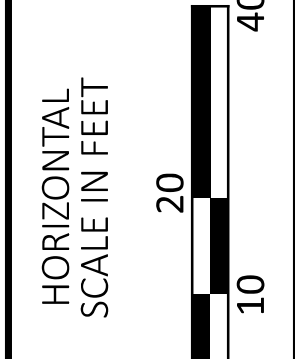
 FULL DEPTH REPAIR



DESIGN AGENCY

TEC Engineering, Inc.
TEC Engineering, Inc.
PLANNED BY
TEC Engineering, Inc.
7288 Central Park Blvd.
Mason, OH 45040

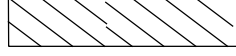
DESIGNER	VMG
REVIEWER	DGO
PROJECT ID	115752
SHEET	15
TOTAL	42

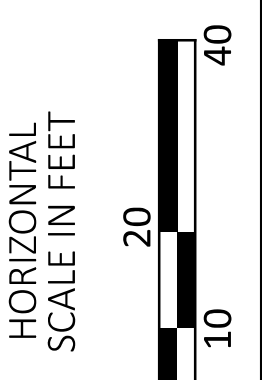
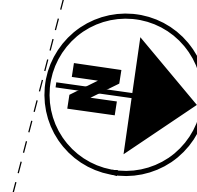


RESURFACING PLAN
STA. 245+52.00 TO STA. 252+50.00



LEGEND

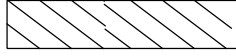
 FULL DEPTH REPAIR



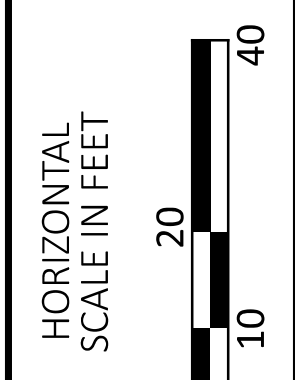
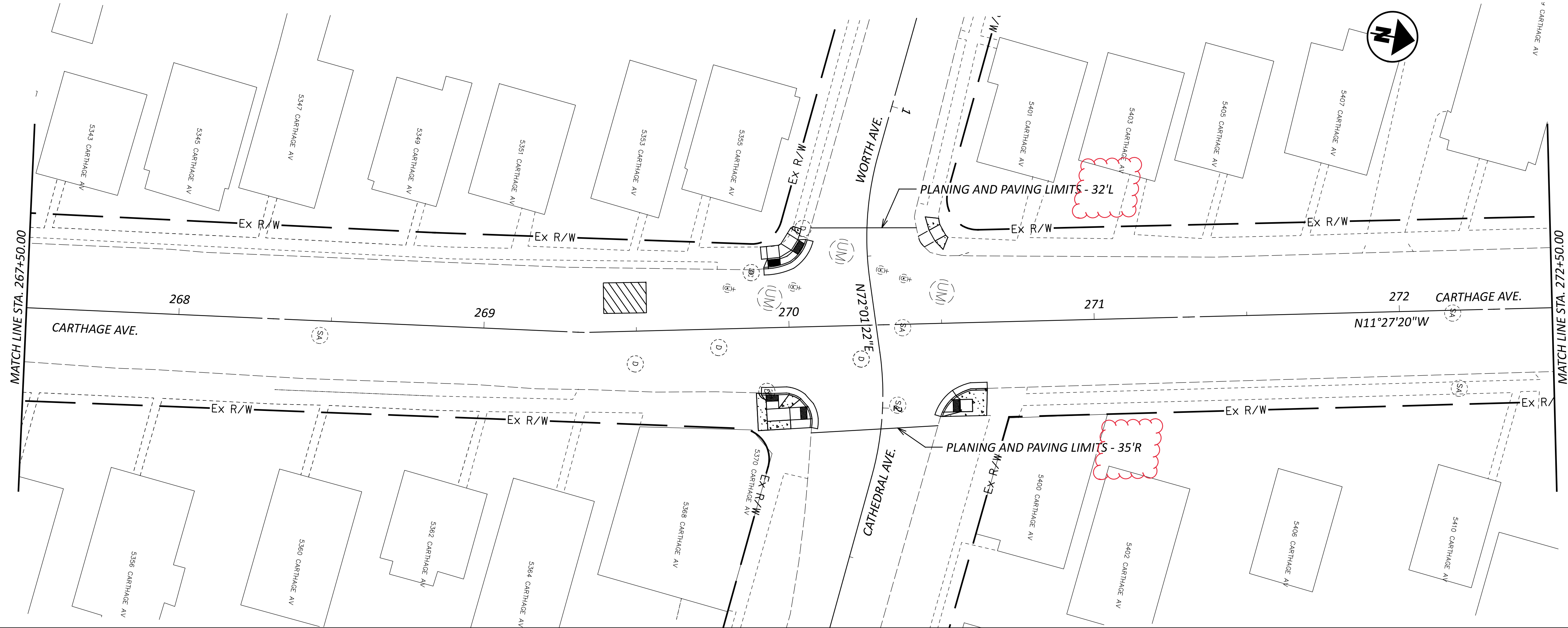
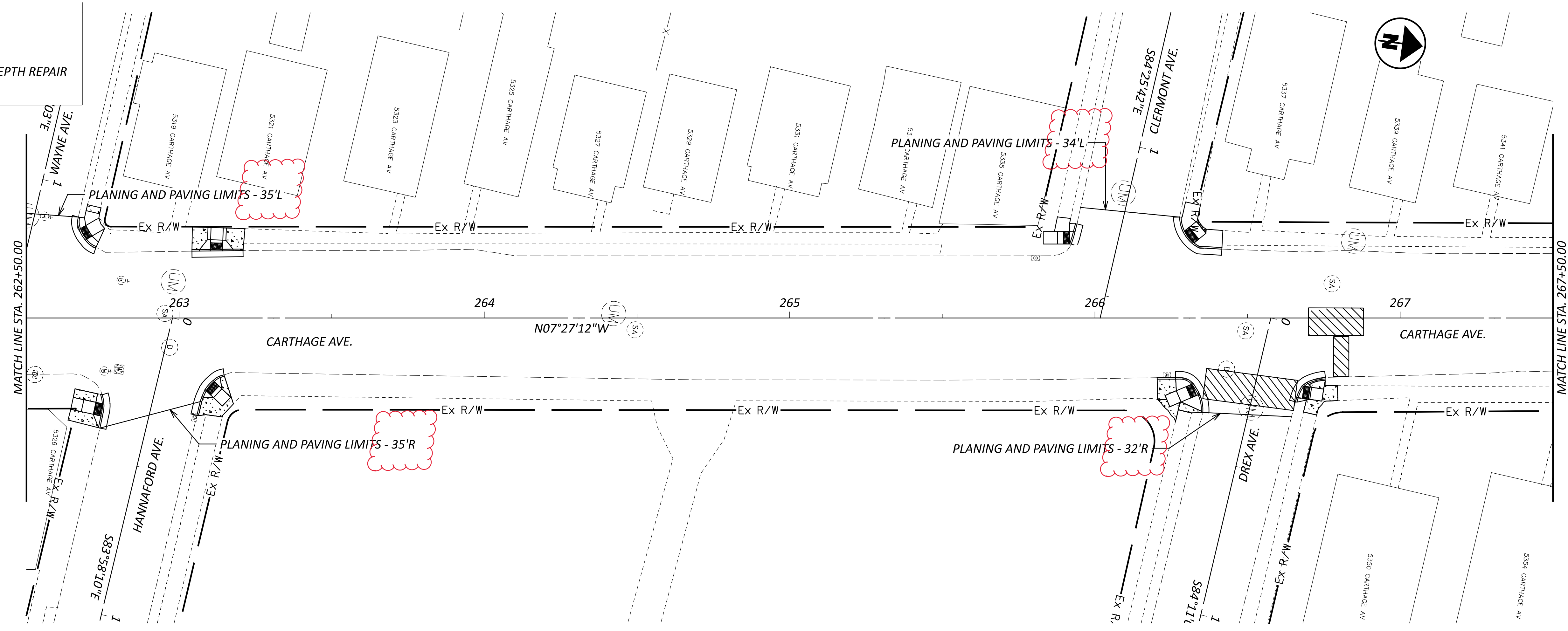
RESURFACING PLAN
STA. 252+50.00 TO STA. 262+50.00

DESIGN AGENCY	
TEC Engineering, Inc.	
TEC Engineering, Inc. 7288 Central Park Blvd. Mason, OH 45040	
DESIGNER	
VMG	
REVIEWER	
DGO 9-8-2023	
PROJECT ID	
115752	
SHEET	TOTAL
16	42

LEGEND

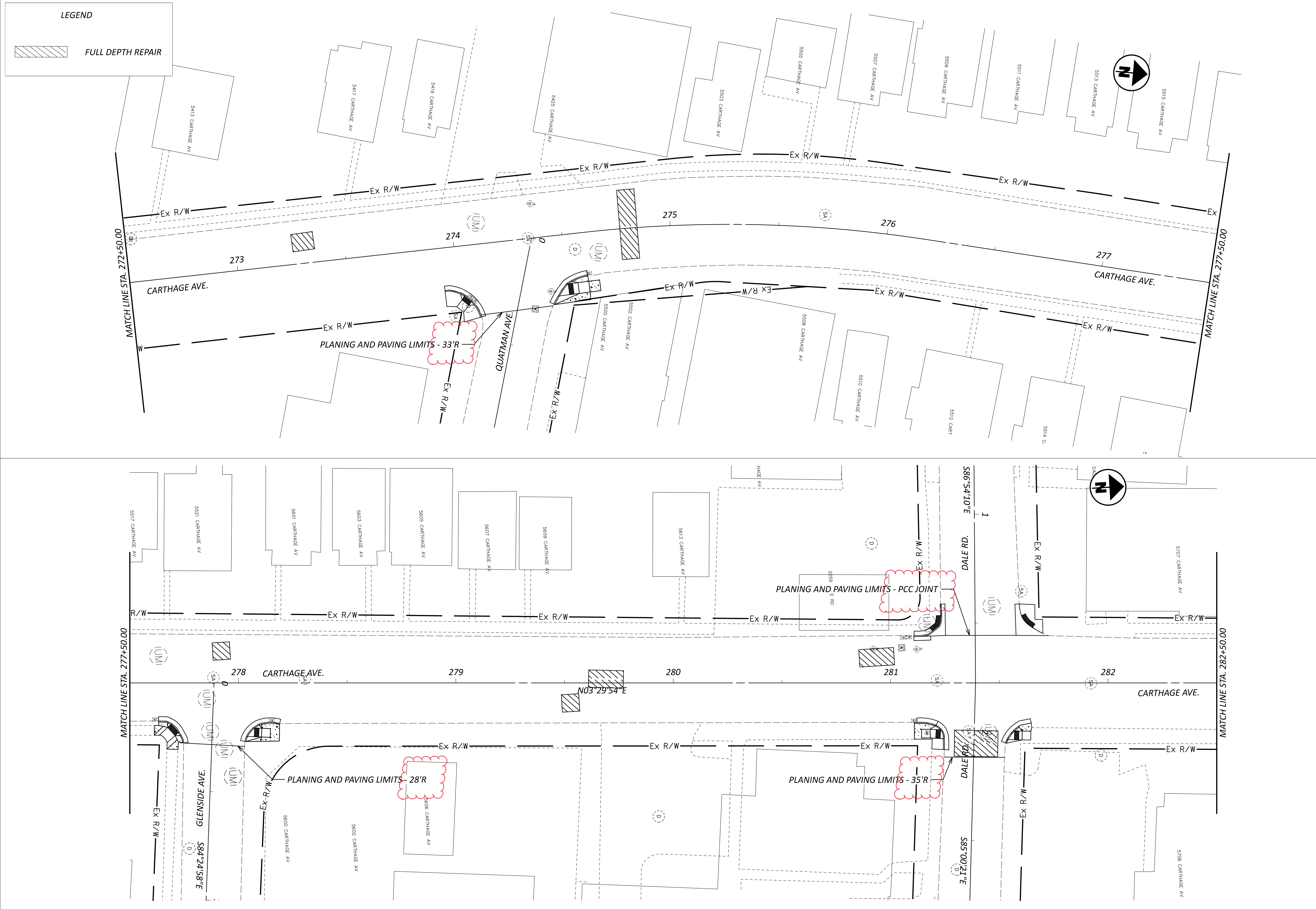


FULL DEPTH REPAIR



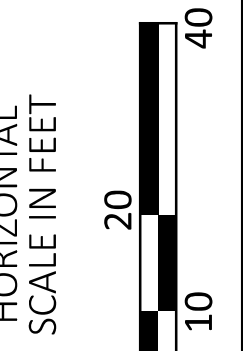
RESURFACING PLAN
STA. 262+50.00 TO STA. 272+50.00

DESIGN AGENCY	
TEC Engineering, Inc. TEC Engineering, Inc. 7288 Central Park Blvd. Mason, OH 45040	
DESIGNER	VMG
REVIEWER	DGO
PROJECT ID	115752
SHEET	TOTAL
17	42



LEGEND

 FULL DEPTH REPAIR

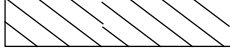


RESURFACING PLAN
STA. 272+50.00 TO STA. 282+50.00

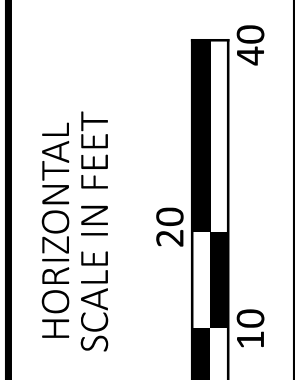
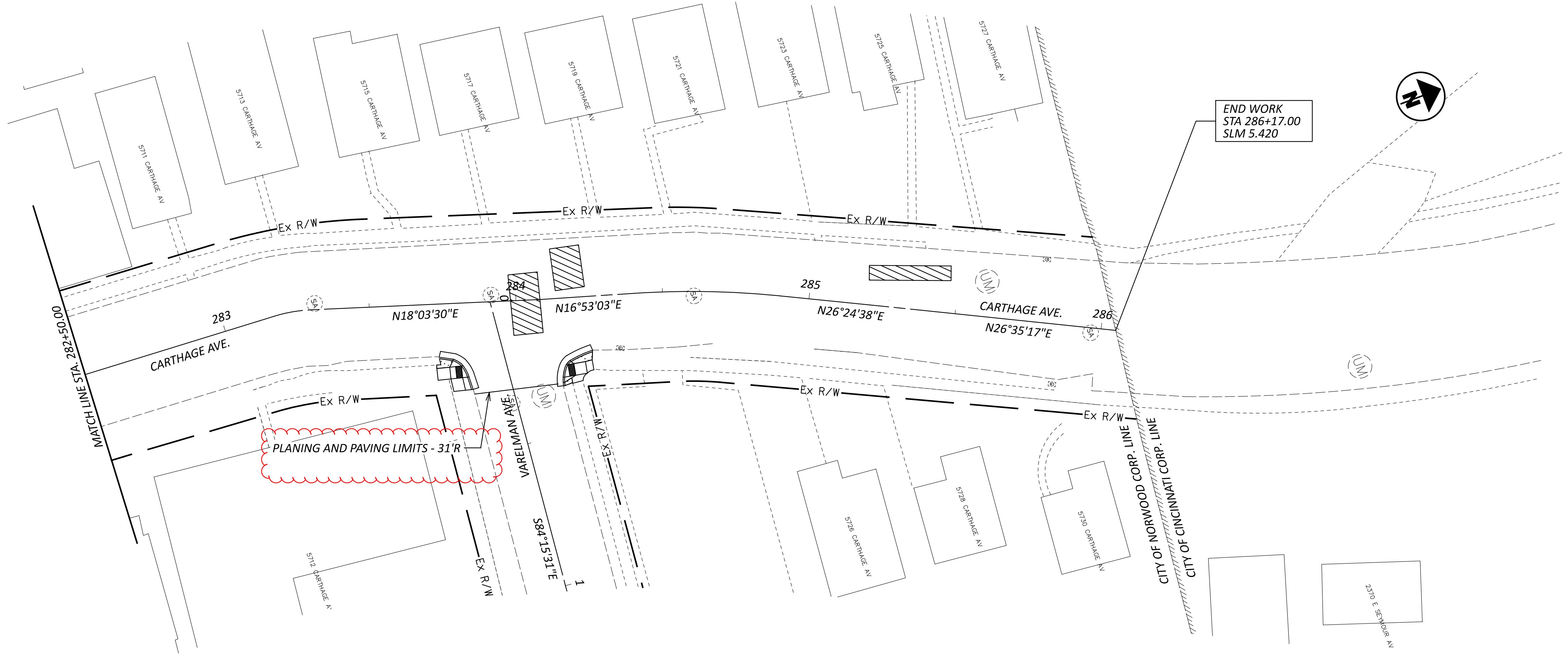
DESIGN AGENCY
TEC Engineering, Inc.
PLM Prepared by:
TEC Engineering, Inc.
7288 Central Parke Blvd.
Mason, OH 45040

DESIGNER	VMG
REVIEWER	DGO
PROJECT ID	115752
SHEET	18
TOTAL	42

LEGEND

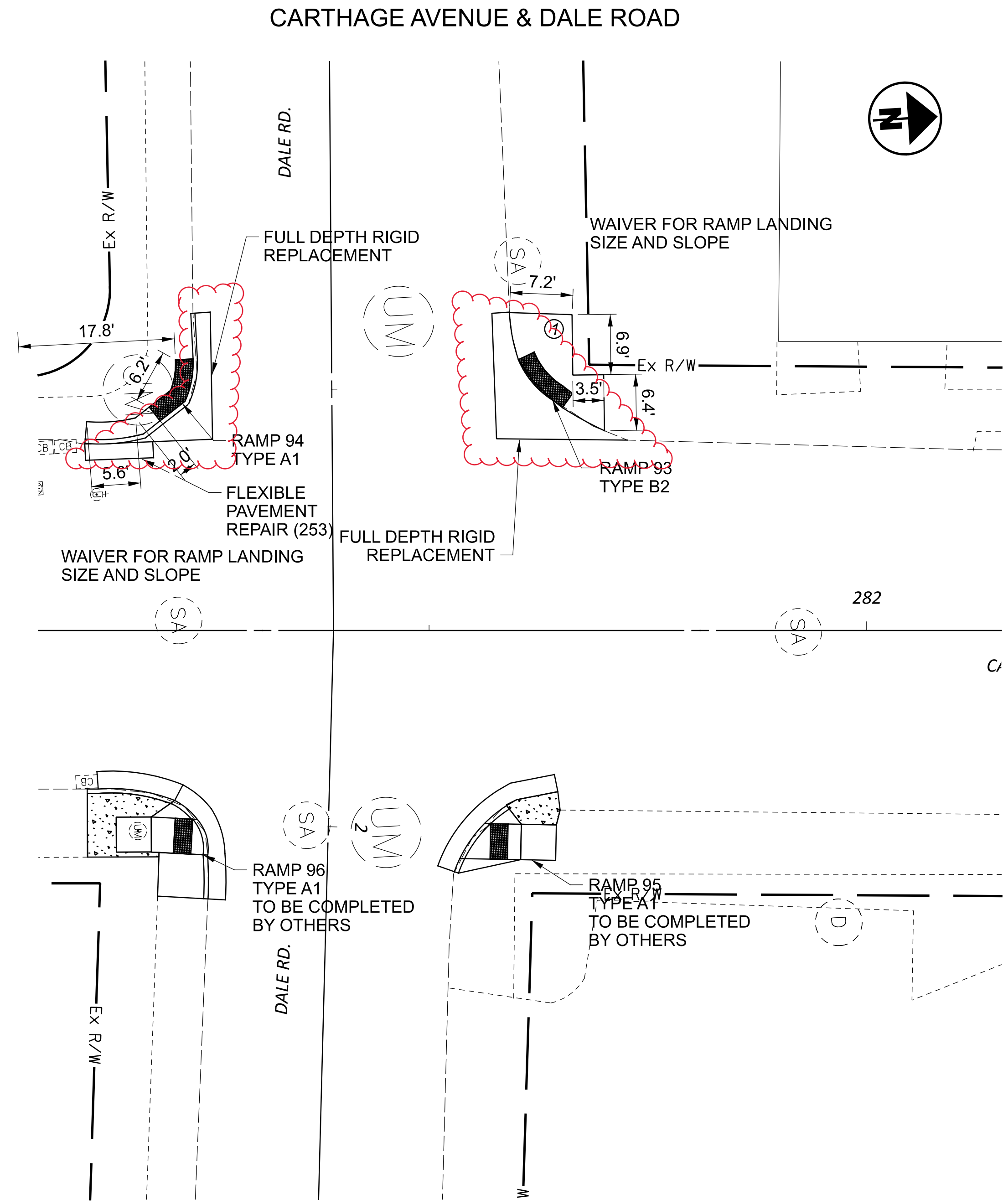
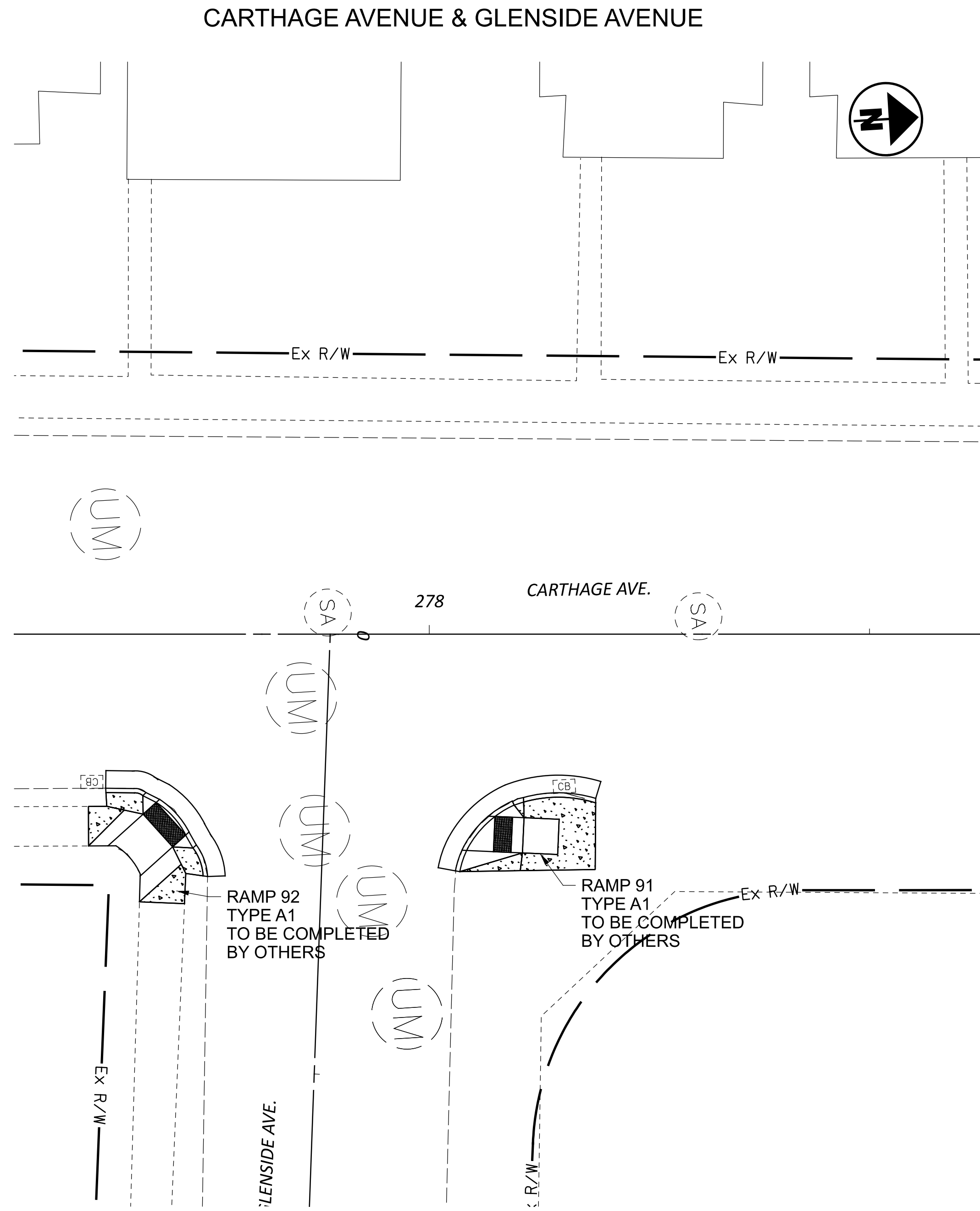


FULL DEPTH REPAIR



RESURFACING PLAN
STA. 282+50.00 TO STA. 286+10.00

DESIGN AGENCY	
TEC Engineering, Inc. TEC Engineering, Inc. PLAN PREPARED BY: TEC Engineering, Inc. 7288 Central Parke Blvd. Mason, OH 45040	
DESIGNER	VMG
REVIEWER	DGO
PROJECT ID	115752
SHEET	TOTAL
19	42



CURB RAMP DETAILS
CARTHAGE AVE. & GLENSIDE AVE., CARTHAGE AVE. & DALE RD.

DESIGN AGENCY
TEC Engineering, Inc.
TEC Engineering, Inc.
7288 Central Parke Blvd.
Mason, OH 45040

DESIGNER	AFS
REVIEWER	DGO
PROJECT ID	115752
SHEET	42
TOTAL	42

