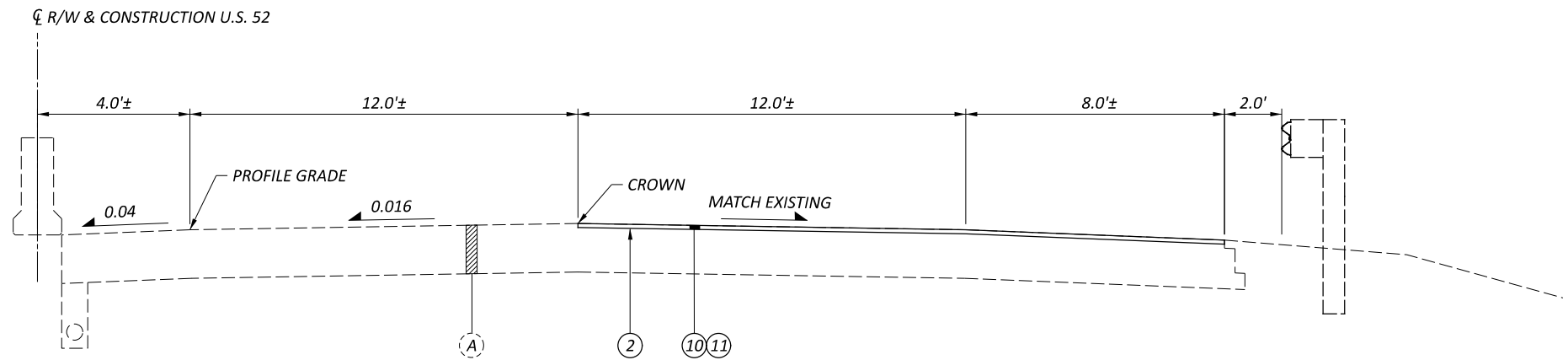


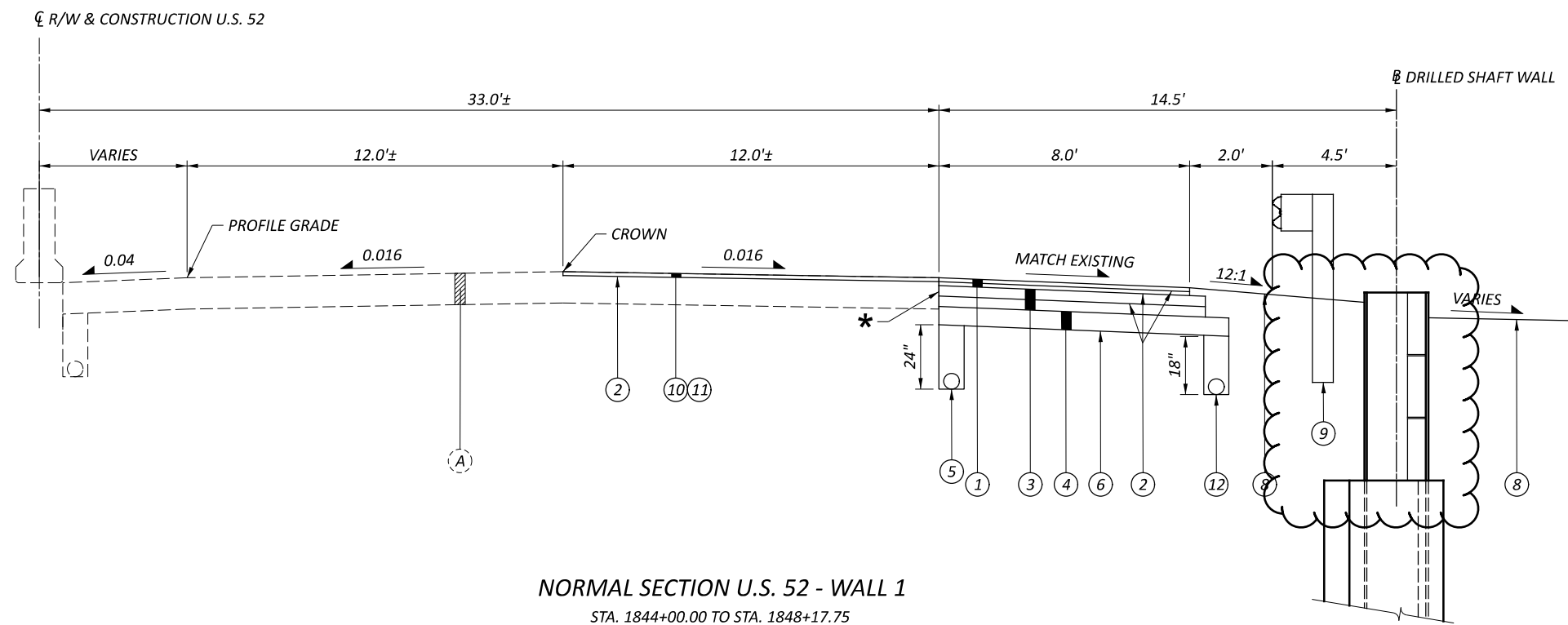
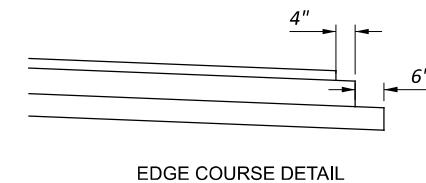
LEGEND

- ① ITEM 441 - 3" ASPHALT CONCRETE SURFACE COURSE, TYPE 1, (448), PG64-22, (USE 2 LIFTS)
- ② ITEM 407 - NON-TRACKING TACK COAT
- ③ ITEM 301 - 8" ASPHALT CONCRETE BASE, PG64-22, (449), (USE 2 LIFTS)
- ④ ITEM 304 - 7" AGGREGATE BASE
- ⑤ ITEM 605 - 6" SHALLOW PIPE UNDERDRAIN
- ⑥ ITEM 204 - SUBGRADE COMPACTION
- ⑦ ITEM 609 - COMBINATION CURB AND GUTTER, TYPE 2
- ⑧ ITEM 659 - SEEDING AND MULCHING
- ⑨ ITEM 606 - GUARDRAIL, TYPE MGS QUARTER POST SPACING
- ⑩ ITEM 254 - 1.5" PAVEMENT PLANING, ASPHALT CONCRETE
- ⑪ ITEM 441 - 1.5" ASPHALT CONCRETE SURFACE COURSE, TYPE 1, (448), PG64-22
- ⑫ ITEM 605 - 6" BASE PIPE UNDERDRAIN
- (A) EXISTING PAVEMENT (±4" ASPHALT OVER ±8" CONCRETE)
- (B) EXISTING PAVEMENT (±2" ASPHALT OVER ±6" CONCRETE OVER ±4" SUBBASE)



RESURFACING SECTION U.S. 52 - WALL 1

STA. 1830+28.00 TO STA. 1844+00.00
 STA. 1848+17.75 TO STA. 1848+40.00



NORMAL SECTION U.S. 52 - WALL 1

STA. 1844+00.00 TO STA. 1848+17.75

* SAWCUT AT WHITE STRIPE OR SOUND PAVEMENT

TYPICAL SECTIONS

HAM-52-36.85

MODEL: Sheet PAPER: 17x11 (in.) DATE: 1/8/2025 TIME: 10:10:33 AM USER: slparker
 p:\v\hobol-pw-bentley.com\shahid-pw-02\Documents\01 Active Projects\District 08\Hamilton\116046\40-Engineering_Stantec\Roadway\Sheets\116046_GY001.dgn



1500 LAKE SHORE DRIVE,
 SUITE 100
 COLUMBUS, OH 43204
 (614) 486-4383

DESIGNER

ZTM

REVIEWER

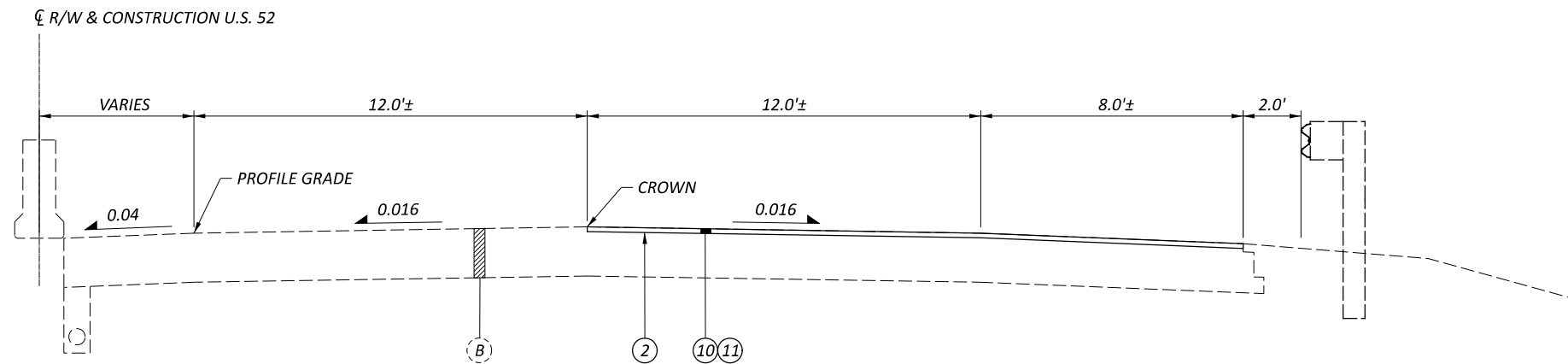
TCM 09/13/24

PROJECT ID

116046

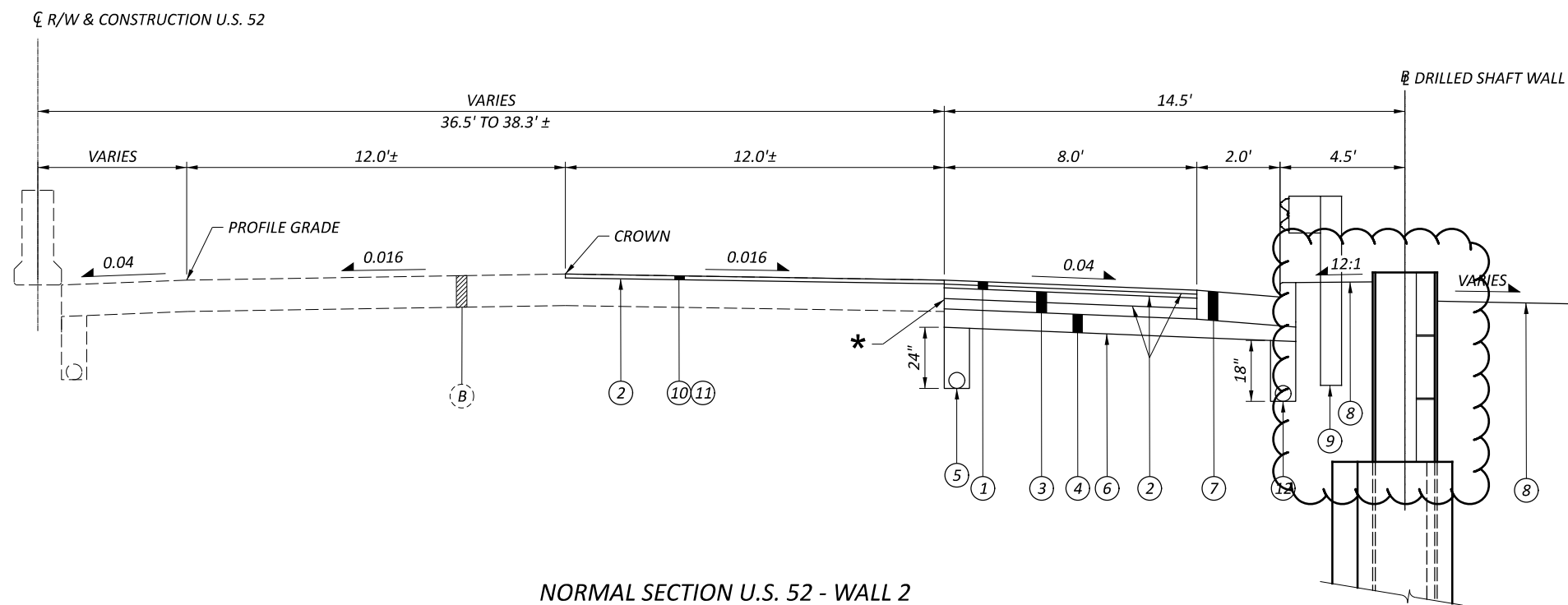
SHEET TOTAL

P.2 60



RESURFACING SECTION U.S. 52 - WALL 2

STA. 1877+60.00 TO STA. 1891+90.00
STA. 1894+40.00 TO STA. 1894+80.00



NORMAL SECTION U.S. 52 - WALL 2

STA. 1891+90.00 TO STA. 1894+40.00

FOR LEGEND SEE SHEET P.2

* SAWCUT AT WHITE STRIPE OR SOUND PAVEMENT

TYPICAL SECTIONS



1500 LAKE SHORE DRIVE,
SUITE 100
COLUMBUS, OH 43204
(614) 486-4383

DESIGNER
ZTM

REVIEWER
TCM 09/13/24

PROJECT ID
116046

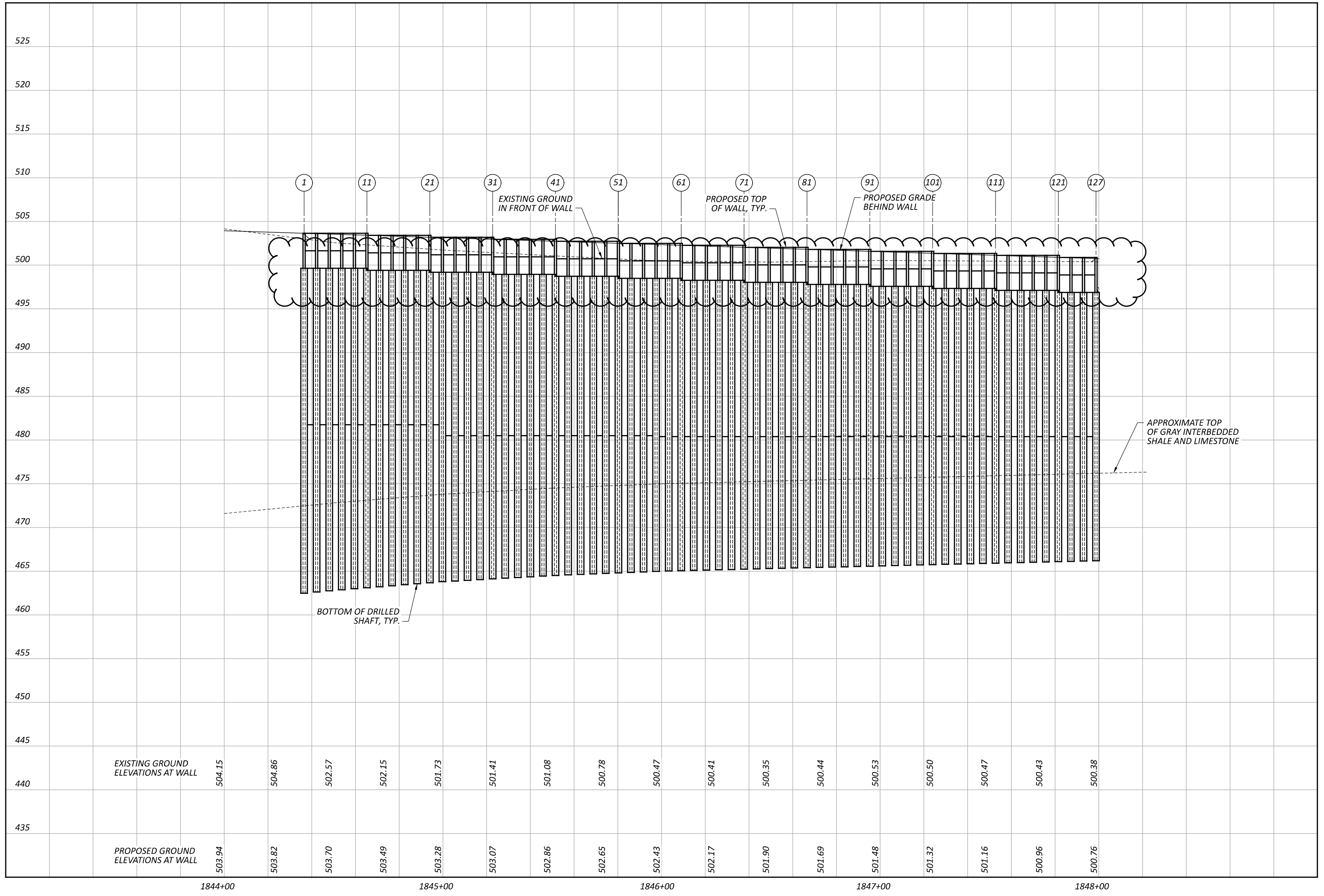
SHEET TOTAL
P.3 60

SHEET NUM.											PART.	ITEM	ITEM	GRAND	UNIT	DESCRIPTION	SEE SHEET NO.
4	5	6	15	16	35	37	38	39			01/STR01	EXT	TOTAL				
ROADWAY																	
LS				504							LS	201	11000	LS		CLEARING AND GRUBBING	
			775								504	202	23000	504	SY	PAVEMENT REMOVED	
			121								775	202	38000	775	FT	GUARDRAIL REMOVED	
			87								121	203	10000	121	CY	EXCAVATION	
				708							87	203	20000	87	CY	EMBANKMENT	
				1							708	204	10000	708	SY	SUBGRADE COMPACTION	
			50								1	204	45000	1	HOUR	PROOF ROLLING	
			725								50	606	15150	50	FT	GUARDRAIL, TYPE MGS HALF POST SPACING	
											725	606	15250	725	FT	GUARDRAIL, TYPE MGS QUARTER POST SPACING	
											LS	878	25000	LS		INSPECTION AND COMPACTION TESTING OF UNBOUND MATERIALS	
EROSION CONTROL																	
			25								25	601	21050	25	SY	TIED CONCRETE BLOCK MAT WITH TYPE 1 UNDERLAYMENT	
			1,080								1,080	659	10000	1,080	SY	SEEDING AND MULCHING	
0.14											0.14	659	20000	0.14	TON	COMMERCIAL FERTILIZER	
0.21											0.21	659	31000	0.21	ACRE	LIME	
6											6	659	35000	6	MGAL	WATER	
											10,000	832	30000	10,000	EACH	EROSION CONTROL	
DRAINAGE																	
			668								668	605	11100	668	FT	6" SHALLOW PIPE UNDERDRAINS	
			668								668	605	14000	668	FT	6" BASE PIPE UNDERDRAINS	
			62								62	611	00510	62	FT	6" CONDUIT, TYPE F FOR UNDERDRAIN OUTLETS	
			2								2	611	99710	2	EACH	PRECAST REINFORCED CONCRETE OUTLET	
PAVEMENT																	
				7,316							7,316	254	01000	7,316	SY	PAVEMENT PLANING, ASPHALT CONCRETE, 1.5"	
				150							150	301	56000	150	CY	ASPHALT CONCRETE BASE, PG64-22, (449), 8"	
				139							139	304	20000	139	CY	AGGREGATE BASE, 7"	
				719							719	407	20000	719	GAL	NON-TRACKING TACK COAT	
				354							354	441	50000	354	CY	ASPHALT CONCRETE SURFACE COURSE, TYPE 1, (448), PG64-22	
				250							250	609	12000	250	FT	COMBINATION CURB AND GUTTER, TYPE 2	
TRAFFIC CONTROL																	
			45								45	621	00100	45	EACH	RPM	
			45								45	621	54000	45	EACH	RAISED PAVEMENT MARKER REMOVED	
			8								8	626	00110	8	EACH	BARRIER REFLECTOR, TYPE 2 (UNIDIRECTIONAL)	
			28.5								28.5	630	03100	28.5	FT	GROUND MOUNTED SUPPORT, NO. 3 POST	
			12								12	630	80100	12	SF	SIGN, FLAT SHEET	
			1								1	630	84900	1	EACH	REMOVAL OF GROUND MOUNTED SIGN AND DISPOSAL	
			1								1	630	86002	1	EACH	REMOVAL OF GROUND MOUNTED POST SUPPORT AND DISPOSAL	
			0.7								0.7	644	00104	0.7	MILE	EDGE LINE, 6"	
			0.67								0.67	644	00204	0.67	MILE	LANE LINE, 6"	
			1,290								1,290	644	00700	1,290	FT	TRANSVERSE/DIAGONAL LINE	
			3								3	644	01630	3	EACH	BIKE LANE SYMBOL MARKING	
			1,456								1,456	644	60000	1,456	SF	GREEN COLORED PAVEMENT FOR BIKE LANES	
RETAINING WALLS (001 & 002)																	
					2,400						2,400	507	00400	2,400	FT	STEEL PILES, MISC.: SOLDIER PILES W24x162	
						1,424					1,424	507	00400	1,424	FT	STEEL PILES, MISC.: SOLDIER PILES W27x129	
LS											LS	511	81200	LS		CONCRETE, MISC.: CONSULTANT FOR CONCRETE QUALITY CONTROL INCLUDING TESTING AND INSPECTING	
								249			249	511	81300	249	EACH	CONCRETE, MISC.: PRECAST CONCRETE PANEL	
							60				60	518	21200	60	CY	POROUS BACKFILL WITH GEOTEXTILE FABRIC	
					1,501	752					2,253	524	94703	2,253	FT	DRILLED SHAFTS, 36" DIAMETER, ABOVE BEDROCK, AS PER PLAN	
					640	420					1,060	524	94705	1,060	FT	DRILLED SHAFTS, 36" DIAMETER, INTO BEDROCK, AS PER PLAN	
					1,113	513					1,626	524	95000	1,626	FT	DRILLED SHAFTS, MISC.: PLUG PILE, 36" DIAMETER, UNREINFORCED	
					3						3	524	95000	3	FT	DRILLED SHAFTS, MISC.: EXTENSION	

GENERAL SUMMARY

DESIGN AGENCY

Stantec
 1500 LAKE SHORE DRIVE.
 SUITE 100
 COLUMBUS, OH 43204
 (614) 486-4383
 DESIGNER
ZTM
 REVIEWER
TCM 09/13/24
 PROJECT ID
116046
 SHEET TOTAL
P.13 | 60



WALL 1 ELEVATION
 STA. 1844+36.50 TO STA. 1845+77.37

DESIGN AGENCY



10200 Alliance Road,
 Suite 300
 Cincinnati, OH 45242
 (513) 842-6200

DESIGNER

MRS

REVIEWER

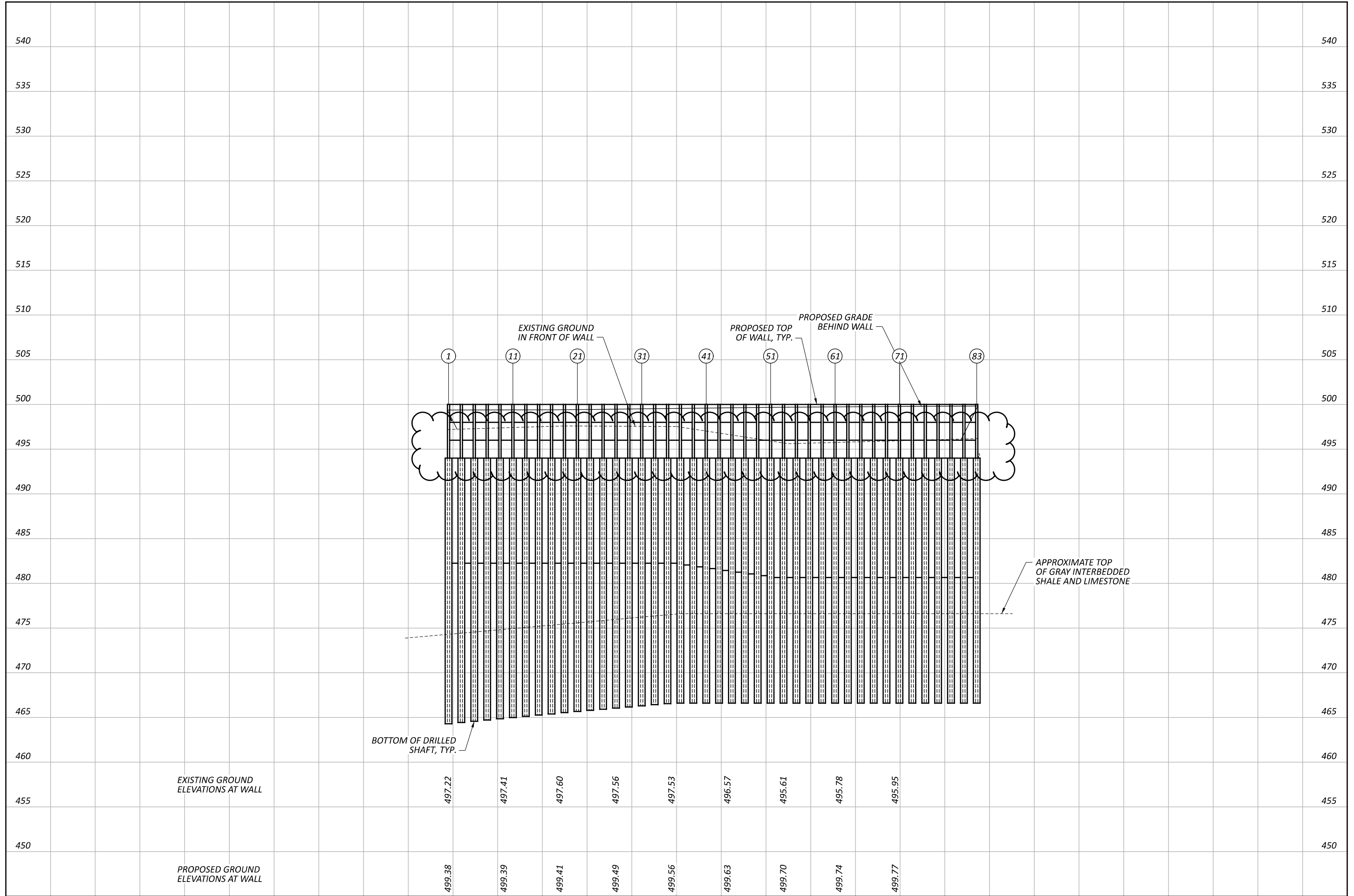
EDA 09/13/24

PROJECT ID

116046

SHEET TOTAL

P.33 60



WALL 2 ELEVATION
 STA. 1891+98.00 TO STA. 1894+34.28

DESIGN AGENCY



10200 Alliance Road,
 Suite 300
 Cincinnati, OH 45242
 (513) 842-6200

DESIGNER

MRS

REVIEWER

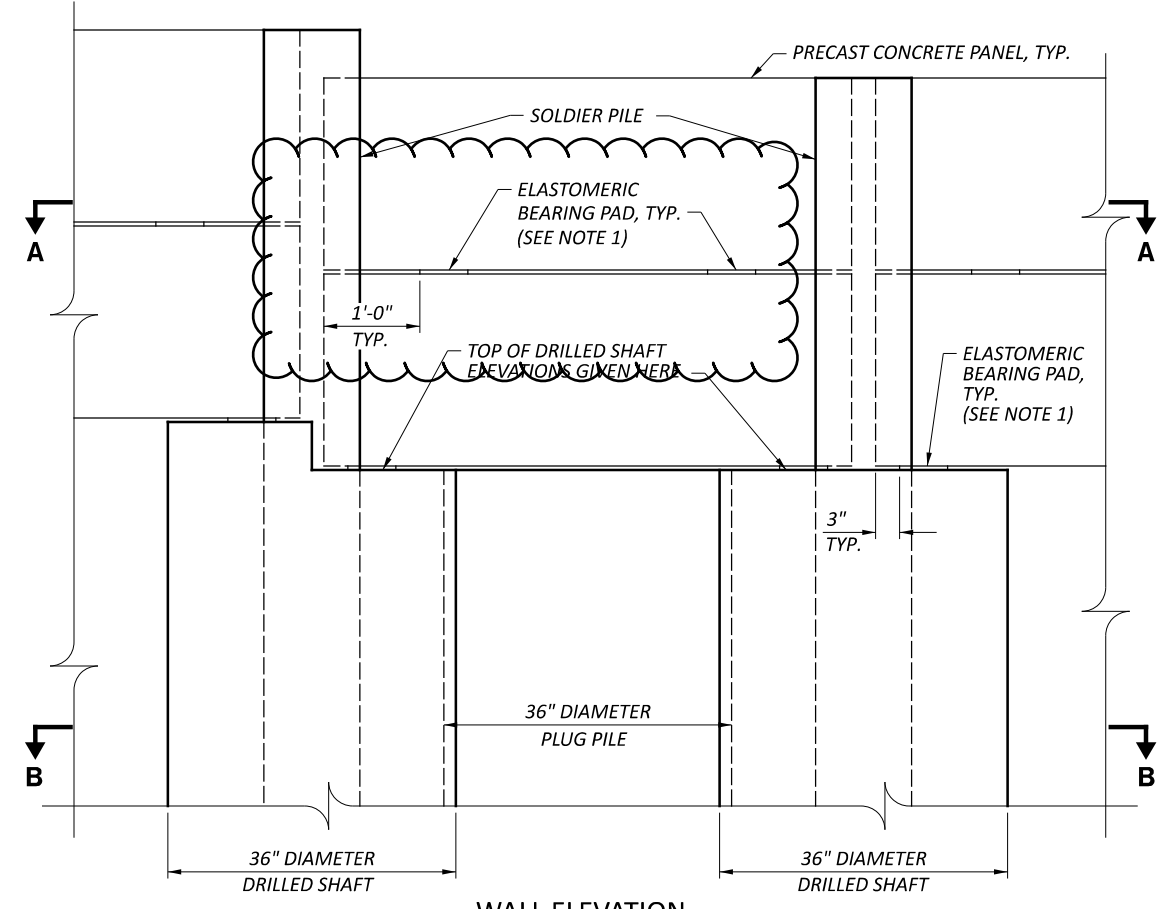
EDA 09/13/24

PROJECT ID

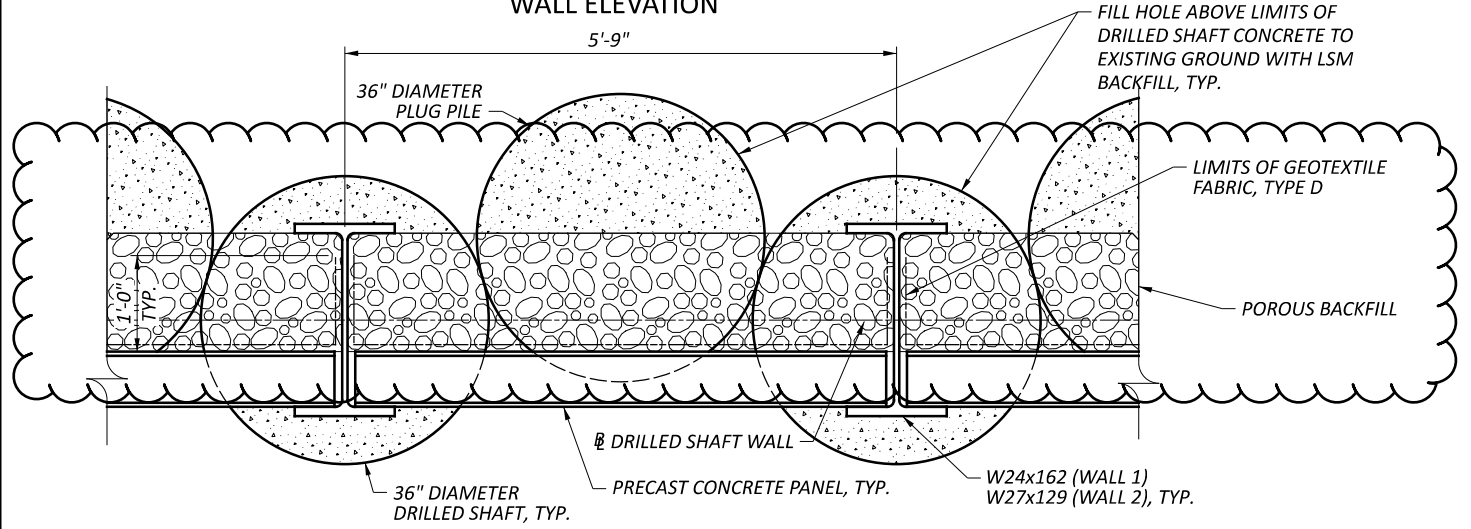
116046

SHEET TOTAL

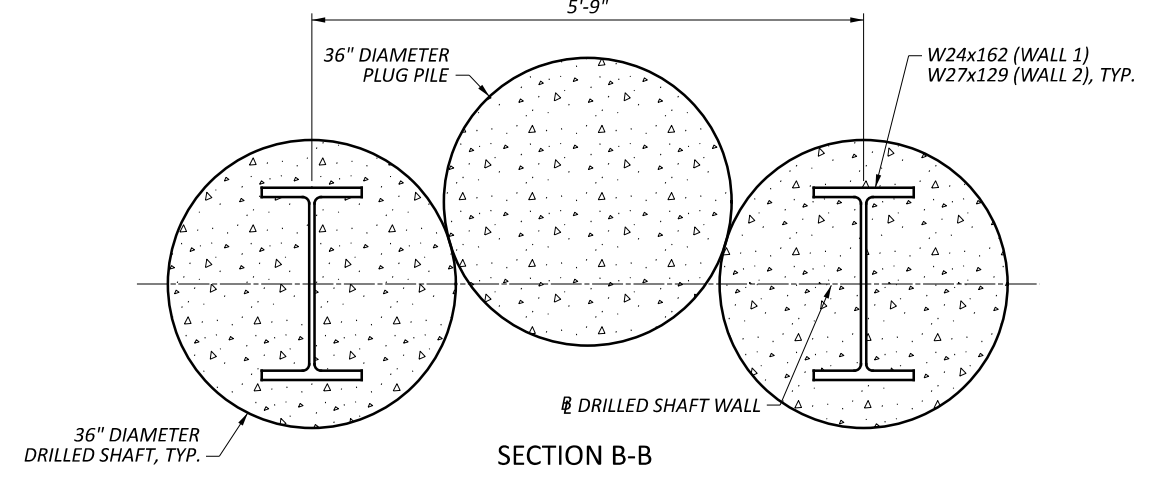
P.36 | 60



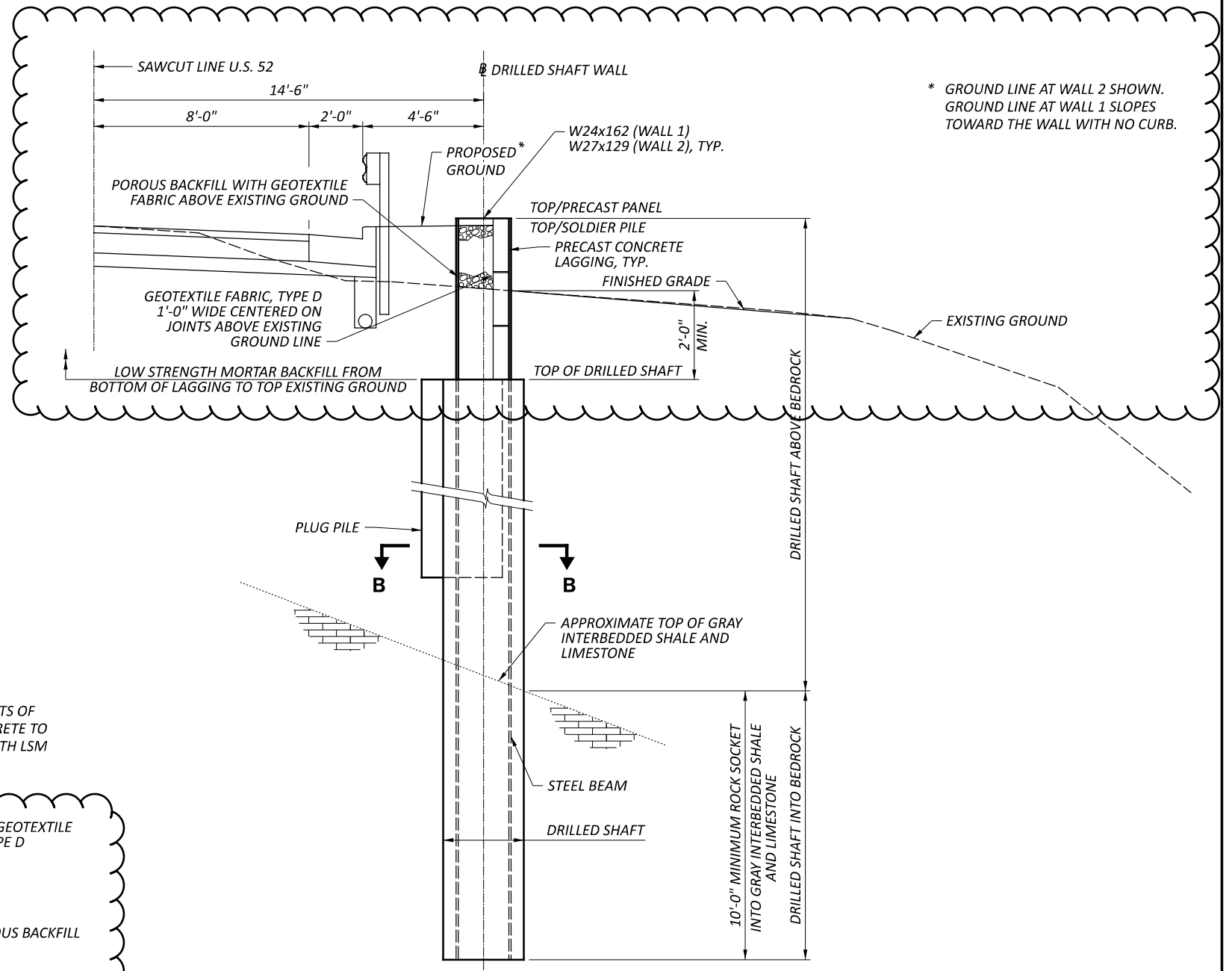
WALL ELEVATION



SECTION A-A



SECTION B-B



DRILLED SHAFT WALL SECTION

* GROUND LINE AT WALL 2 SHOWN. GROUND LINE AT WALL 1 SLOPES TOWARD THE WALL WITH NO CURB.

POROUS BACKFILL WITH GEOTEXTILE FABRIC
 WALL 1 - 5.75 FT X 63 SPACES X 1.25 FT X 1.25 FT / 27 CF/CY = 21 CY
 WALL 2 - 5.75 FT X 41 SPACES X 3.00 FT X 1.50 FT / 27 CF/CY = 39 CY
 TOTAL 60 CY
 ESTIMATED QUANTITIES ABOVE CARRIED TO GENERAL SUMMARY

- NOTES:
- ELASTOMERIC BEARINGS SHALL BE 1/2" X 6" X 6", 70 DUROMETER PER CMS 711.21 TYPE PEP AND ARE INCLUDED FOR PAYMENT WITH ITEM 610, RETAINING WALL, MISC.: PRECAST CONCRETE PANEL FOR PAYMENT.
 - SECURE PRECAST CONCRETE PANELS AGAINST PILE FLANGE UNTIL VOID IS FILLED WITH POROUS BACKFILL.
 - GEOTEXTILE FABRIC, TYPE D IS INCLUDED FOR PAYMENT WITH ITEM 518, POROUS BACKFILL WITH GEOTEXTILE FABRIC.
 - FOR PRECAST CONCRETE PANEL DETAILS, SEE SHEET 39/60.
 - FOR DRILLED SHAFT AND PLUG PILE ELEVATIONS, SEE SHEETS 34/60, 35/60 AND 37/60.

DESIGN AGENCY

 10200 Alliance Road,
 Suite 300
 Cincinnati, OH 45242
 (513) 842-6200
 DESIGNER
 MRS
 REVIEWER
 EDA 09/13/24
 PROJECT ID
 116046
 SHEET TOTAL
 P.38 60