

EX. MONUMENTS OFF CLOUGH PIKE		
STATION	OFFSET	DESCRIPTION
51+45.21	416.75' RT.	IPID "JRS-4513"
52+67.97	30.00' RT.	IPID "HM SURVEY"
55+48.13	23.96' LT.	CNPT - "STANTEC-101"



HORIZONTAL
SCALE IN FEET



0 20 40

10

RIGHT OF WAY DETAIL
STA. 51+00.00 TO STA. 56+05.72

HAM-CR358-0.94

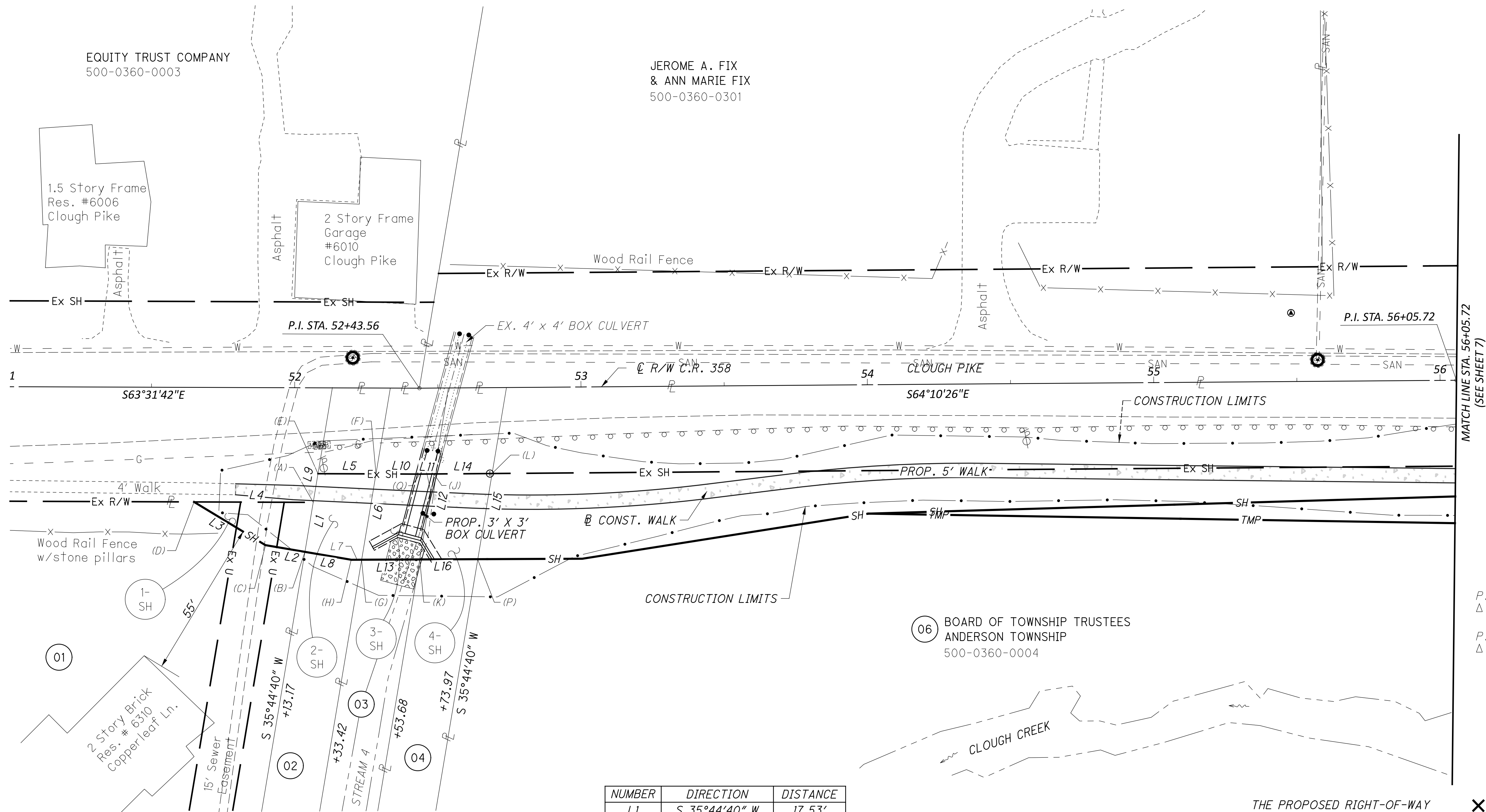
MODEL: CLP_2 - RD001_Plan 1 [Sheet] PAPER SIZE: 34x22 (in.) DATE: 5/2/2024 TIME: 3:48:59 PM USER: dohollingsworth
V:\1736\active\173620162\engineering\118484\400-Engineering\RW\Sheets\118484 RD001.dgn

01 ALFRED XUELIANG XIN
AND XIAOLI SUN
500-0360-0420

02 RICHARD J. BENKEN
AND CARLA J. BENKEN
500-0360-0282
500-0360-0412

EDWARD H. BENKEN, JR.
 AND PATRICIA BENKEN, TRUSTEES
 OF THE BENKEN FAMILY REVOCABLE TRUST,
 DATED JUNE 25, 2009
 500-0360-0283

6015 CLOUGH, LLC
 500-0360-0018


$$\begin{aligned} P.I. &= STA. 52+43.56 \\ \Delta &= 00^{\circ}38'44'' LT \end{aligned}$$
$$\begin{aligned} P.I. &= STA. 56+05.72 \\ \Delta &= 01^{\circ}02'28'' RT \end{aligned}$$

06 BOARD OF TOWNSHIP TRUSTEES
ANDERSON TOWNSHIP
500-0360-0004

<i>NUMBER</i>	<i>DIRECTION</i>	<i>DISTANCE</i>
<i>L1</i>	<i>S 35°44'40" W</i>	<i>17.53'</i>
<i>L2</i>	<i>N 54°03'58" W</i>	<i>14.00'</i>
<i>L3</i>	<i>N 32°33'53" W</i>	<i>29.15'</i>
<i>L4</i>	<i>S 63°31'42" E</i>	<i>41.63'</i>
<i>L5</i>	<i>S 63°31'42" E</i>	<i>20.25'</i>
<i>L6</i>	<i>S 35°44'40" W</i>	<i>30.37'</i>
<i>L7</i>	<i>N 63°58'58" W</i>	<i>3.62'</i>
<i>L8</i>	<i>N 54°03'58" W</i>	<i>16.42'</i>
<i>L9</i>	<i>N 35°44'40" E</i>	<i>10.13'</i>
<i>L10</i>	<i>S 63°31'42" E</i>	<i>15.21'</i>
<i>L11</i>	<i>S 64°10'26" E</i>	<i>5.04'</i>

<i>NUMBER</i>	<i>DIRECTION</i>	<i>DISTANCE</i>
<i>L12</i>	<i>S 35°44'40" W</i>	<i>30.26'</i>
<i>L13</i>	<i>N 63°58'58" W</i>	<i>20.27'</i>
<i>L14</i>	<i>S 64°10'26" E</i>	<i>20.29'</i>
<i>L15</i>	<i>S 35°44'40" W</i>	<i>30.33'</i>
<i>L16</i>	<i>N 63°58'58" W</i>	<i>20.27'</i>
<i>L20</i>	<i>N 65°24'51" W</i>	<i>219.32'</i>

THE PROPOSED RIGHT-OF-WAY
SHALL BE REFERENCED FROM
THE CENTERLINE OF R/W OF
C.R. 358 (CLOUGH PIKE),
UNLESS OTHERWISE NOTED

X = REMOVE
 (**) = ENCROACHMENT
 DND = DO NOT DISTURB

<i>REV. BY</i>	<i>DATE</i>	<i>DESCRIPTION</i>
<i>DATE COMPLETED</i>		

DESIGN AGENCY	
 Stantec 10200 Alliance Road, Suite 300 Cincinnati, OH 45242 (513) 842-8200	
DESIGNER	
NJK	
REVIEWER	
SER 01/10/24	
PROJECT ID	
118484	
SHEET	TOTAL
6	10

MONUMENT LEGEND

- ⌘ R.R.S. FOUND
- ⌘ R.R.S. SET
- ⊙ P.K. NAIL FOUND
- ⊙ CONC. MONUMENT FD.
- ⊙ REFER. MONUMENT SET
- ⊙ IRON PIN FOUND
- ⊙ I.P.F. WITH I.D. CAP
- ¾" BAR SET
- ⊙ PROJECT CONTROL MON.