

EWO NFID =
EWO Name =

Notes:

- 1 2 4" future Path Conduit with
3 - 1.25" Innerduct (Orange, Blue, Green)
3 - 15MM microduct (Orange, Blue Green)

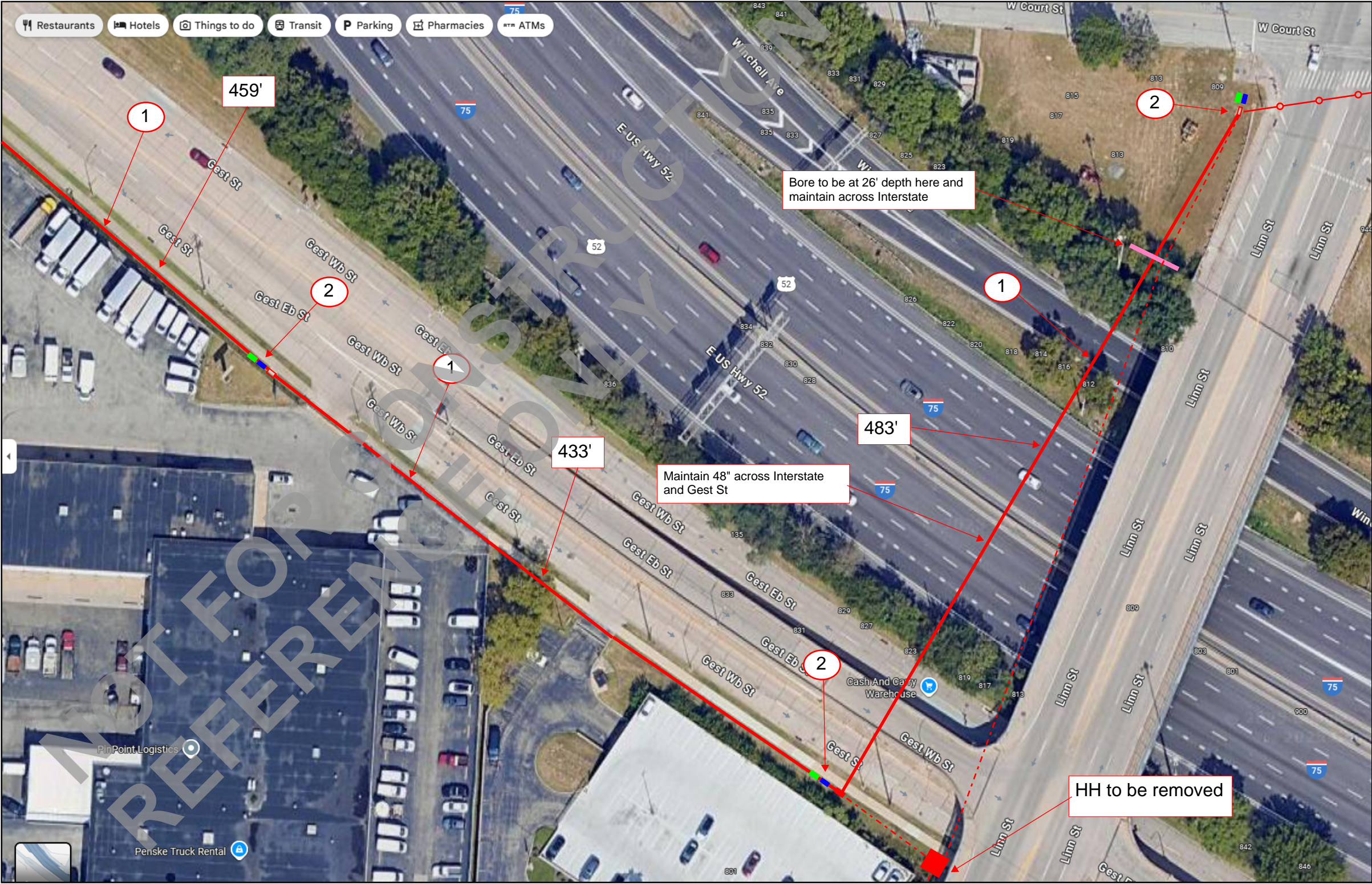
- Denotes Windstream Handhole
(2 - 1.25" Conduit installed in HH Blue color)
- Denotes Crown Castle Handhole
(2 - 1.25" Conduit installed in HH Green Color)
- Denotes Verizon Existing Handhole
- Denotes Verizon NEW Handhole

- 2 All Micro Duct will be installed in Verizon
HHs only

— Existing Verizon not affected

- - - Existing Verizon Cable to be removed and
conduit abandoned

Project Description: From existing HH at the SW corner of Linn St and Court St, bore two 4" future path conduits across the Roadways of Winchell Ave, I-75, and Gest St. Bore to a depth of 26' where the existing barrier fence is located. Continue that depth to maintain 48" of coverage across the roadways. Place new HHs between the Fire hydrant and the existing street lamp pole. Bore from new HHs west on Gest St towards Freeman and place two new HHs beside existing Verizon HH. Continue to Freeman with bore to existing HH. Place two additional HHs at Freeman. From this HH on Freeman, place one 4" future path conduit and one 2" conduit south on Freeman. Place two new HHs halfway to 8th St as shown on next slide. Continue the Bore to 8th and place one new HH beside existing Verizon HH. The additional HHs placed along route will be for Windstream and Crown Castle. These HHs are depicted in Green and BLUE. Each company has requested 2 conduits each so two 1.25" innerduct will be installed into their respected HHs while the remaining Innerducts will be installed in the Verizon HHs. Windstream's path will end at the intersection of Freeman and Gets and they will be responsible for connection to the Altra Fiber MH across the Street. Crown's conduit will continue to the intersection of 8th and Freeman. Verizon will removed their cables from the existing conduits currently across the interstate and along Linn St to the south of the bridge as shown by the dashed line. The HH at the bottom of the steps at Gest Street will be removed the conduit will be abandoned in place.



EWO:

PROPERTY CONTACT:

LOCATION:

Location Map

EWO NFID =
EWO Name =

Notes:

1 2 4" future Path Conduit with
3 - 1.25" Innerduct (Orange, Blue, Green)
3 - 15MM microduct (Orange, Blue Green)

Denotes Windstream Handhole
(2 - 1.25" Conduit installed in HH Blue color)

Denotes Crown Castle Handhole
(2 - 1.25" Conduit installed in HH Green Color)

Denotes Verizon Existing Handhole

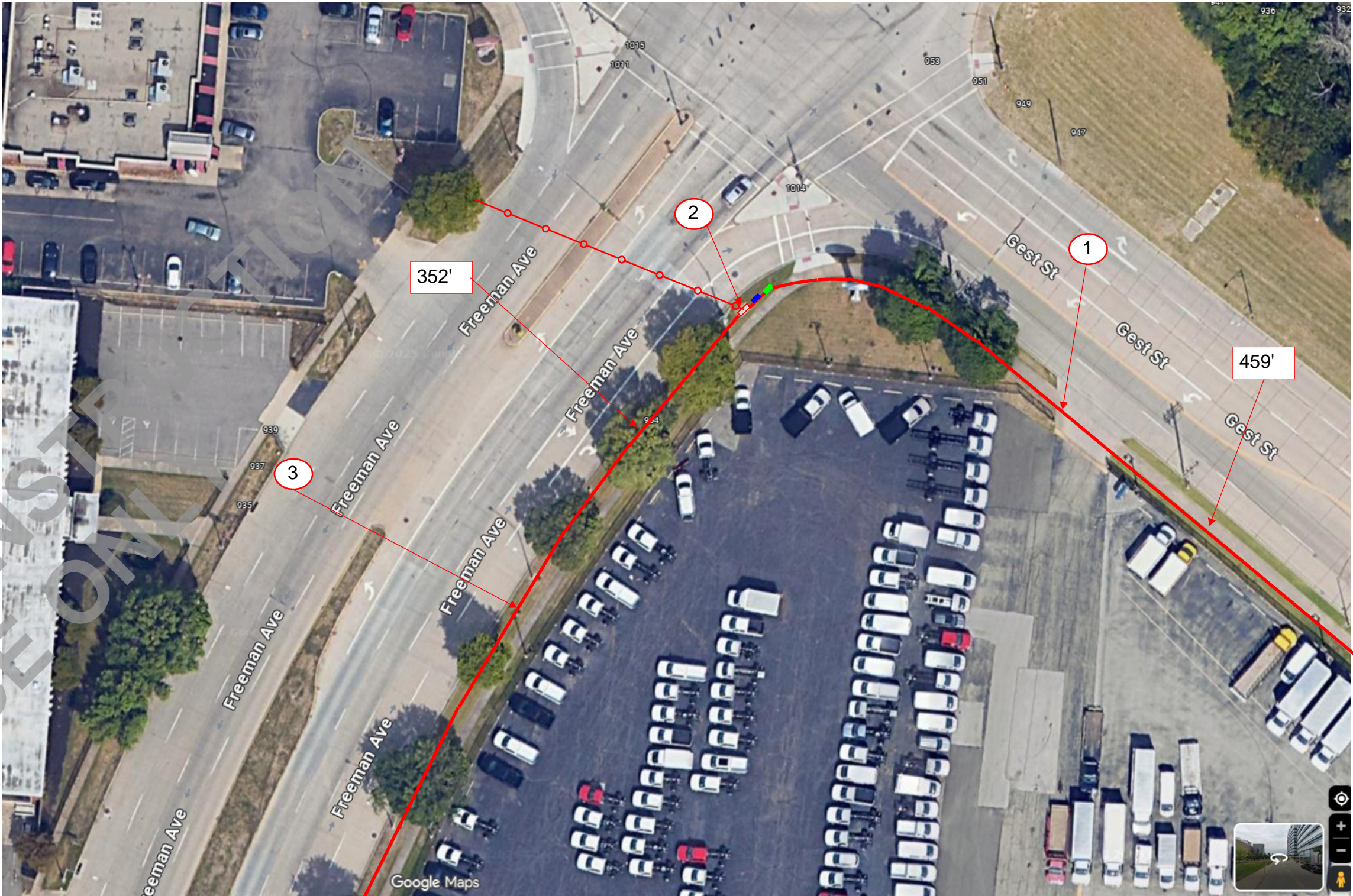
Denotes Verizon NEW Handhole

2 All Micro Duct will be installed in Verizon
HHs only

3 1 4" future Path Conduit with
3 - 1.25" Innerduct (Orange, Blue, Green)
3 - 15MM microduct (Orange, Blue Green)
1 2" Conduit

Existing Verizon not affected

Existing Verizon Cable to be removed and
conduit abandoned



EWO:

PROPERTY CONTACT:

LOCATION:

Location Map

EWO NFID =
EWO Name =

Notes:

- 1 2 4" future Path Conduit with
3 - 1.25" Innerduct (Orange, Blue, Green)
3 - 15MM microduct (Orange, Blue Green)

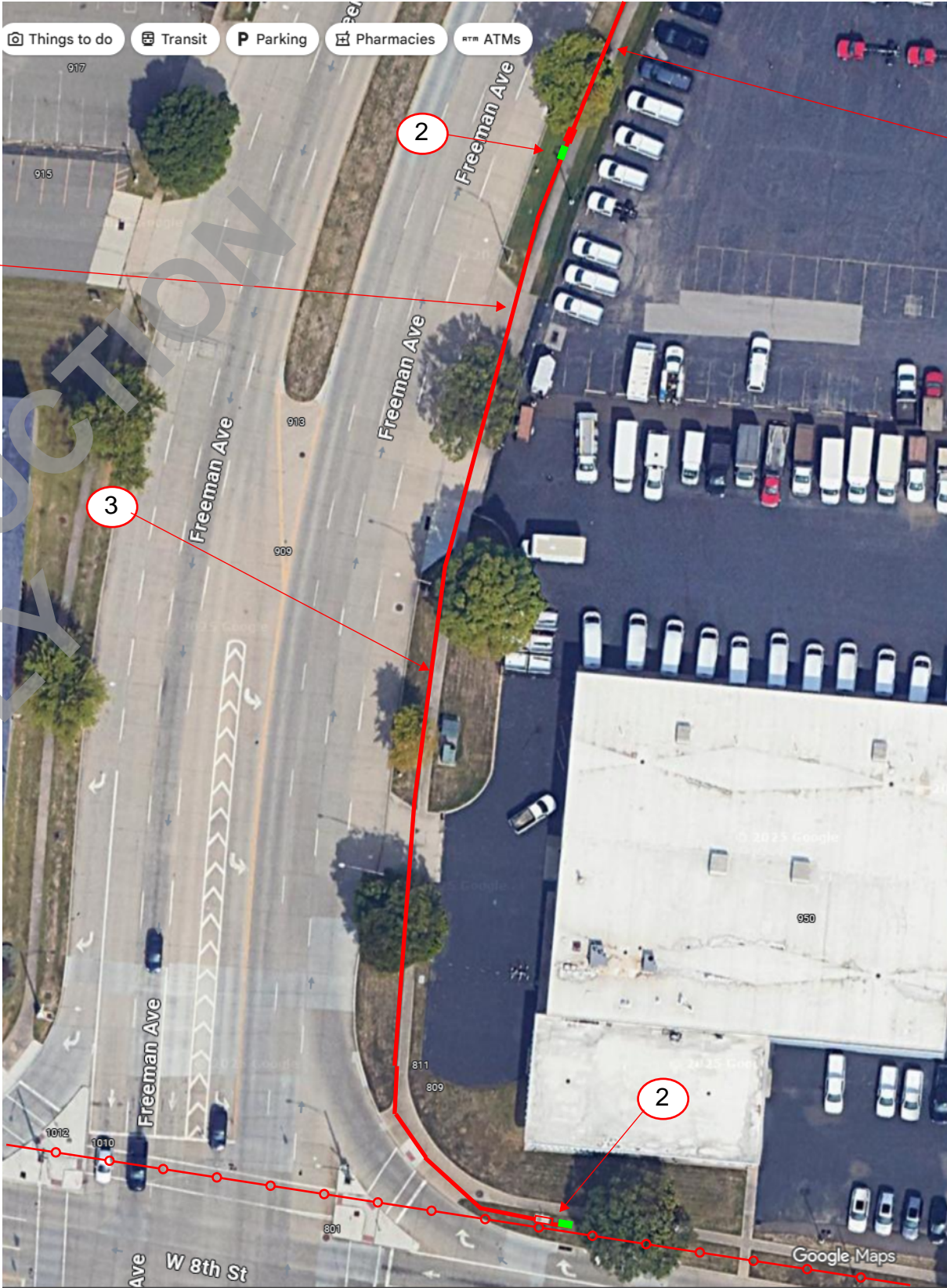
- Denotes Windstream Handhole
(2 - 1.25" Conduit installed in HH Blue color)
- Denotes Crown Castle Handhole
(2 - 1.25" Conduit installed in HH Green Color)
- Denotes Verizon Existing Handhole
- Denotes Verizon NEW Handhole

- 2 All Micro Duct will be installed in Verizon
HHs only

- 3 1 4" future Path Conduit with
3 - 1.25" Innerduct (Orange, Blue, Green)
3 - 15MM microduct (Orange, Blue Green)
1 2" Conduit

○ Existing Verizon not affected

--- Existing Verizon Cable to be removed and
conduit abandoned



EWO:

PROPERTY CONTACT:

LOCATION:

Location Map