

P:\PR54704\HAM\91826\Design\Roadway\Sheets\91826_GG010.dgn Sheet 2/26/2018 5:44:20 PM chen

SHEET NUM.										PART.			ITEM	ITEM EXT	GRAND TOTAL	UNIT	DESCRIPTION	SEE SHEET NO.
										01/IMS/PV	02/TMS/BR	03/						
STRUCTURE OVER 20 FOOT SPAN (HAM-71-1068R)																		
											LS		201	11001	LS		CLEARING AND GRUBBING, AS PER PLAN	339
											LS		202	11203	LS		PORTIONS OF STRUCTURE REMOVED, OVER 20 FOOT SPAN, AS PER PLAN	339
											454		202	22900	454 SY	APPROACH SLAB REMOVED		
											LS		202	98000	LS	REMOVAL MISC.: SIGN TRUSS SUPPORT BRACKETS	389	
											20		202	98100	20 EACH	REMOVAL MISC.: SCUPPER AND DOWNSPOUT REMOVAL (EACH)	368	
											LS		503	11100	LS	COFFERDAMS AND EXCAVATION BRACING		
											126		503	21100	126 CY	UNCLASSIFIED EXCAVATION		
											235,915		509	10000	235,915 LB	EPOXY COATED REINFORCING STEEL		
											294		510	10001	294 EACH	DOWEL HOLES WITH NONSHRINK, NONMETALLIC GROUT, AS PER PLAN	339	
											763		511	34447	763 CY	CLASS QC2 CONCRETE WITH QC/QA, BRIDGE DECK, AS PER PLAN	343	
											140		511	34449	140 CY	CLASS QC2 CONCRETE, BRIDGE DECK (PARAPET), AS PER PLAN	343	
											105		511	44110	105 CY	CLASS QC1 CONCRETE, ABUTMENT NOT INCLUDING FOOTING		
											LS		511	81200	LS	CONCRETE, MISC.: SURVEYING EXISTING BRIDGE	409	
											1,875		512	10100	1,875 SY	SEALING OF CONCRETE SURFACES (EPOXY-URETHANE)		
											105		SPECIAL	51271500	105 SY	URETHANE TOP COAT SEALER	341	
											1,875		512	74000	1,875 SY	REMOVAL OF EXISTING COATINGS FROM CONCRETE SURFACES		
											6,867		513	20000	6,867 EACH	WELDED STUD SHEAR CONNECTORS		
											466		513	95030	466 EACH	STRUCTURAL STEEL, MISC.: WELDING CROSSFRAME STIFFENERS	392	
											10		513	95030	10 EACH	STRUCTURAL STEEL, MISC.: INTERMEDIATE CROSSFRAME	392	
											450		514	00050	450 SF	SURFACE PREPARATION OF EXISTING STRUCTURAL STEEL		
											450		514	00056	450 SF	FIELD PAINTING OF EXISTING STRUCTURAL STEEL, PRIME COAT		
											450		514	00060	450 SF	FIELD PAINTING STRUCTURAL STEEL, INTERMEDIATE COAT		
											450		514	00066	450 SF	FIELD PAINTING STRUCTURAL STEEL, FINISH COAT		
											1		514	00504	1 MNHR	GRINDING FINES, TEARS, SLIVERS ON EXISTING STRUCTURAL STEEL		
											1		514	10000	1 EACH	FINAL INSPECTION REPAIR		
											621		514	20001	621 SF	FIELD PAINTING OF DAMAGED STRUCTURAL STEEL, AS PER PLAN	340	
											219		516	11210	219 FT	STRUCTURAL EXPANSION JOINT INCLUDING ELASTOMERIC STRIP SEAL		
											213		516	14020	213 FT	SEMI-INTEGRAL ABUTMENT EXPANSION JOINT SEAL		
											11		516	44201	11 EACH	ELASTOMERIC BEARING WITH INTERNAL LAMINATES AND LOAD PLATE (NEOPRENE), AS PER PLAN, 1'-0"x1'-2"x3.25"	340	
											11		516	44201	11 EACH	ELASTOMERIC BEARING WITH INTERNAL LAMINATES AND LOAD PLATE (NEOPRENE), AS PER PLAN, 11 1/2"x1'-2"x3.22"	340	
											LS		516	47000	LS	JACKING AND TEMPORARY SUPPORT OF SUPERSTRUCTURE		
											LS		518	21230	LS	POROUS BACKFILL WITH GEOTEXTILE FABRIC		
											1,997		SPECIAL	51900100	1,997 SF	COMPOSITE FIBER WRAP SYSTEM	341	
											64		519	11101	64 SF	PATCHING CONCRETE STRUCTURE, AS PER PLAN	340	
											454		526	25001	454 SY	REINFORCED CONCRETE APPROACH SLABS (T=15"), AS PER PLAN	343	
											215		526	90010	215 FT	TYPE A INSTALLATION		
											556		607	39900	556 FT	VANDAL PROTECTION FENCE, 6' STRAIGHT, COATED FABRIC		
											556		607		556 FT	TEMPORARY FENCE		
STRUCTURE OVER 20 FOOT SPAN (HAM-71-1149)																		
											LS		202	11203	LS	PORTIONS OF STRUCTURE REMOVED, OVER 20 FOOT SPAN, AS PER PLAN	339	
											1,226		512	10100	1,226 SY	SEALING OF CONCRETE SURFACES (EPOXY-URETHANE)		
											1,136		512	10300	1,136 SY	SEALING CONCRETE BRIDGE DECKS WITH HMWM RESIN		
											1,226		512	74000	1,226 SY	REMOVAL OF EXISTING COATINGS FROM CONCRETE SURFACES		
											34,950		514	00050	34,950 SF	SURFACE PREPARATION OF EXISTING STRUCTURAL STEEL		
											34,950		514	00056	34,950 SF	FIELD PAINTING OF EXISTING STRUCTURAL STEEL, PRIME COAT		
											34,950		514	00060	34,950 SF	FIELD PAINTING STRUCTURAL STEEL, INTERMEDIATE COAT		
											34,950		514	00066	34,950 SF	FIELD PAINTING STRUCTURAL STEEL, FINISH COAT		
											24		514	00504	24 MNHR	GRINDING FINES, TEARS, SLIVERS ON EXISTING STRUCTURAL STEEL		
											10		514	10000	10 EACH	FINAL INSPECTION REPAIR		
											LS		518	63300	LS	STRUCTURE DRAINAGE, MISC.: SCUPPER AND DRAINAGE PIPE CLEAN OUT	340	
											20		519	11101	20 SF	PATCHING CONCRETE STRUCTURE, AS PER PLAN	340	
											1		519	12300	1 SY	PATCHING CONCRETE BRIDGE DECK - TYPE B		
											1		601	26000	1 CY	DUMPED ROCK FILL, TYPE B		

GENERAL SUMMARY

HAM-IR71-8.42

P:\PR54704\HAM\91826\Design\Roadway\Sheets\91826_GG011.dgn Sheet 2/26/2018 2:50:06 PM chen

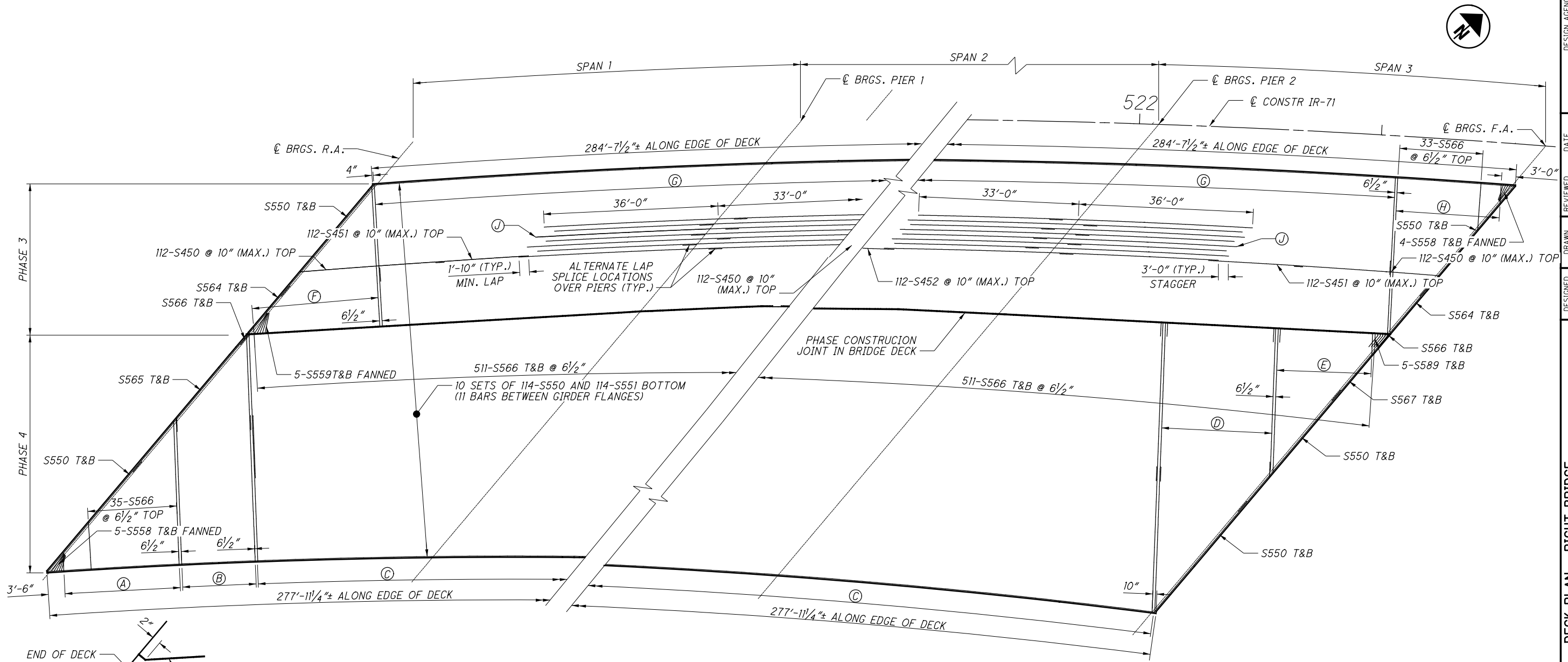
SHEET NUM.											PART.			ITEM	ITEM EXT	GRAND TOTAL	UNIT	DESCRIPTION	SEE SHEET NO.
											01/IMS/PV	02/IMS/B R	03/						
												568		607	39930	568	FT	VANDAL PROTECTION FENCE, 12' CURVED, COATED FABRIC	
												568		607		568	FT	TEMPORARY FENCE	
												10		621	54000	10	EACH	RAISED PAVEMENT MARKER REMOVED	
												10		621	00100	10	EACH	RPM	
																		STRUCTURE OVER 20 FOOT SPAN (HAM-71-1181L)	
												LS		201	11001	LS		CLEARING AND GRUBBING, AS PER PLAN	339
												LS		202	11203	LS		PORTIONS OF STRUCTURE REMOVED, OVER 20 FOOT SPAN, AS PER PLAN	339
												LS		202	98000	LS		REMOVAL MISC.:EXPANSION JOINT REMOVAL	433
												3		257	10000	3	SY	DIAMOND GRINDING PORTLAND CEMENT CONCRETE PAVEMENT	
												975		512	10100	975	SY	SEALING OF CONCRETE SURFACES (EPOXY-URETHANE)	
												1,289		512	10400	1,289	SY	TREATING OF CONCRETE BRIDGE DECK WITH SRS	
												10		SPECIAL	51271500	10	SY	URETHANE TOP COAT SEALER	341
												975		512	74000	975	SY	REMOVAL OF EXISTING COATINGS FROM CONCRETE SURFACES	
												15,640		514	00050	15,640	SF	SURFACE PREPARATION OF EXISTING STRUCTURAL STEEL	
												15,640		514	00056	15,640	SF	FIELD PAINTING OF EXISTING STRUCTURAL STEEL, PRIME COAT	
												15,640		514	00060	15,640	SF	FIELD PAINTING STRUCTURAL STEEL, INTERMEDIATE COAT	
												15,640		514	00066	15,640	SF	FIELD PAINTING STRUCTURAL STEEL, FINISH COAT	
												23		514	00504	23	MNHR	GRINDING FINS, TEARS, SLIVERS ON EXISTING STRUCTURAL STEEL	
												9		514	10000	9	EACH	FINAL INSPECTION REPAIR	
												126		516	10011	126	FT	ARMORLESS PREFORMED JOINT SEAL, AS PER PLAN	433
												94		SPECIAL	51900100	94	SF	COMPOSITE FIBER WRAP SYSTEM	341
												153		519	11101	153	SF	PATCHING CONCRETE STRUCTURE, AS PER PLAN	340
												LS		SPECIAL	60610900	LS		NOISE BARRIER REPAIR LOOSE OR MISSING SOUNDWALL SHIMS AND WOODEN MEMBERS	343
																		STRUCTURE OVER 20 FOOT SPAN (HAM-71-1181R)	
												LS		201	11001	LS		CLEARING AND GRUBBING, AS PER PLAN	339
												LS		202	11203	LS		PORTIONS OF STRUCTURE REMOVED, OVER 20 FOOT SPAN, AS PER PLAN	339
												LS		202	98000	LS		REMOVAL MISC.:EXPANSION JOINT REMOVAL	433
												3		257	10000	3	SY	DIAMOND GRINDING PORTLAND CEMENT CONCRETE PAVEMENT	
												1,023		512	10100	1,023	SY	SEALING OF CONCRETE SURFACES (EPOXY-URETHANE)	
												1,283		512	10400	1,283	SY	TREATING OF CONCRETE BRIDGE DECK WITH SRS	
												1,023		512	74000	1,023	SY	REMOVAL OF EXISTING COATINGS FROM CONCRETE SURFACES	
												15,640		514	00050	15,640	SF	SURFACE PREPARATION OF EXISTING STRUCTURAL STEEL	
												15,640		514	00056	15,640	SF	FIELD PAINTING OF EXISTING STRUCTURAL STEEL, PRIME COAT	
												15,640		514	00060	15,640	SF	FIELD PAINTING STRUCTURAL STEEL, INTERMEDIATE COAT	
												15,640		514	00066	15,640	SF	FIELD PAINTING STRUCTURAL STEEL, FINISH COAT	
												23		514	00504	23	MNHR	GRINDING FINS, TEARS, SLIVERS ON EXISTING STRUCTURAL STEEL	
												9		514	10000	9	EACH	FINAL INSPECTION REPAIR	
												126		516	10011	126	FT	ARMORLESS PREFORMED JOINT SEAL, AS PER PLAN	433
												133		519	11101	133	SF	PATCHING CONCRETE STRUCTURE, AS PER PLAN	341
												LS		SPECIAL	60610900	LS		NOISE BARRIER REPAIR LOOSE OR MISSING SOUNDWALL SHIMS AND WOODEN MEMBERS	340

GENERAL SUMMARY

HAM-IR71-8.42

165
441

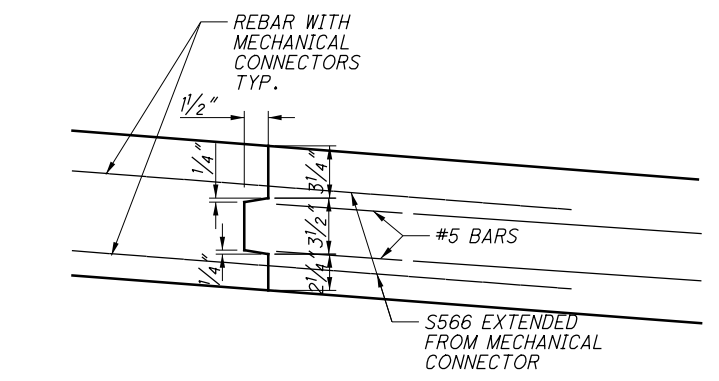
P:\PR54704\HAM\91826\Design\Structures\HAM071_1068R\Sheets\071_1068R_SD001.dgn Sheet 2/27/2018 7:13:08 AM chen



DESIGN AGENCY BURGESS & NIPLÉ 312 PLUM ST. CINCINNATI, OH
DATE 2/20/2017
REVIEWED DWL
STRUCTURE FILE NUMBER 3106896
DRAWN SJA
CHECKED SJA
DESIGNED SJA
REVISIONS XAC
DECK PLAN - RIGHT BRIDGE HAM-71-1068R IR-71 OVER STEWART ROAD
HAM-IR71-8.42 PID No. 91826
29/57
396 441

DECK PLAN - RIGHT BRIDGE
(RAILING NOT SHOWN)

TYPICAL CONSTRUCTION JOINT PLAN



CONSTRUCTION JOINT DETAIL

REINFORCING LEGEND

- (A) 1 S.O. 45-S553 BOT., 1 S.O. 45-S594 TOP @ 6 1/2" = 23'-10"
- (B) 1 S.O. 29-S554 LAPPED WITH 29-S550 BOT., 29-S591 TOP, 29-S560 TOP @ 6 1/2" = 15'-2"
- (C) 433-S555 T&B LAPPED WITH 433-S550 BOT., 433-S591 TOP, 433-S560 TOP @ 6 1/2" (MAX.) = 233'-7" ALTERNATE LAP SPLICE LOCATIONS (MEASURED ALONG CONSTRUCTION JOINT)
- (D) 1 S.O. 43-S556 LAPPED WITH 43-S550 T&B @ 6 1/2" = 22'-9"
- (E) 1 S.O. 37-S557 T&B @ 6 1/2" = 19'-6" T&B
- (F) 1 S.O. 49-S561 T&B @ 6 1/2" = 26'-0"
- (G) 481-S562 T&B LAPPED WITH 481-S568 BOT., 481-S569 TOP, 481-S560 TOP @ 6 1/2" = 259'-8" MEASURED ALONG EDGE OF DECK, ALTERNATE LAP SPLICE LOCATIONS
- (H) 1 S.O. 40-S563 BOT., 1 S.O. 40-S595 TOP @ 6 1/2" = 17'-10 1/2"
- (J) 224-S552 PAIRS @ 5" (MAX.) TOP OVER PIER

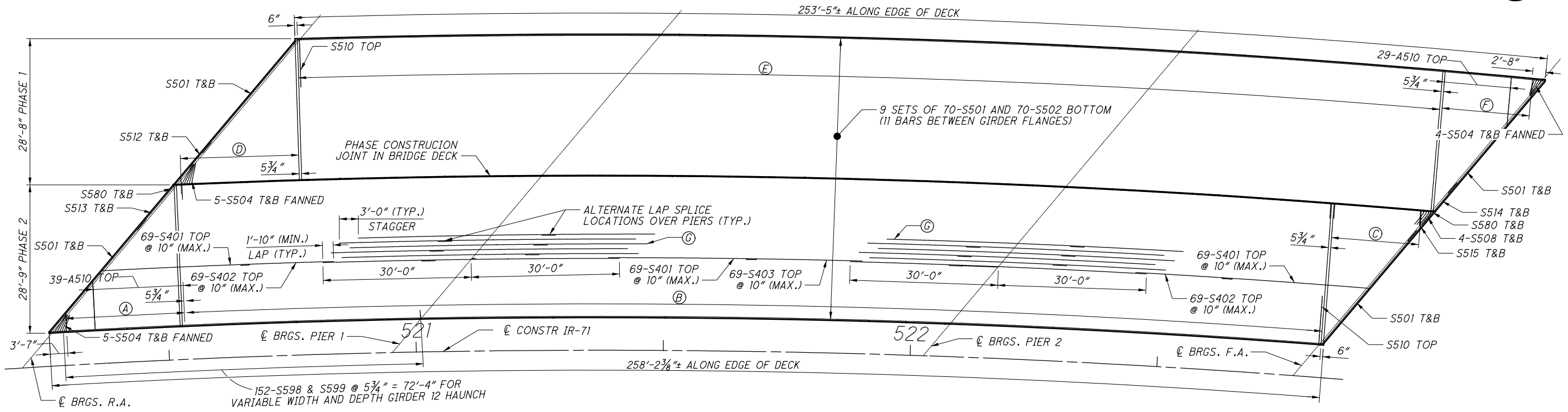
LEGEND:

- BRGS. = BEARINGS
- F.A. = FORWARD ABUTMENT
- R.A. = REAR ABUTMENT
- S.O. = SERIES OF
- SPA. = SPACES
- T&B = TOP AND BOTTOM

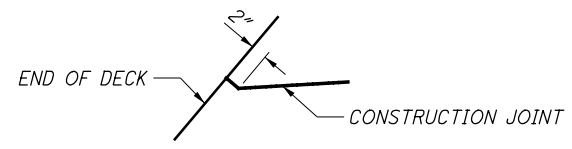
NOTES:

1. MINIMUM LAP LENGTHS:
#4 BAR = 1'-10"
#5 BAR = 2'-10"
2. FOR DECK LAYOUT INFORMATION SEE GENERAL PLAN ON SHEET 3/57.

P:\PR54704\HAM\91826\Design\Structures\HAM071_1068L_Sheets\071_1068L_SD001.dgn Sheet 2/26/2018 5:32:36 PM chen



DECK PLAN - LEFT BRIDGE
(RAILING NOT SHOWN)

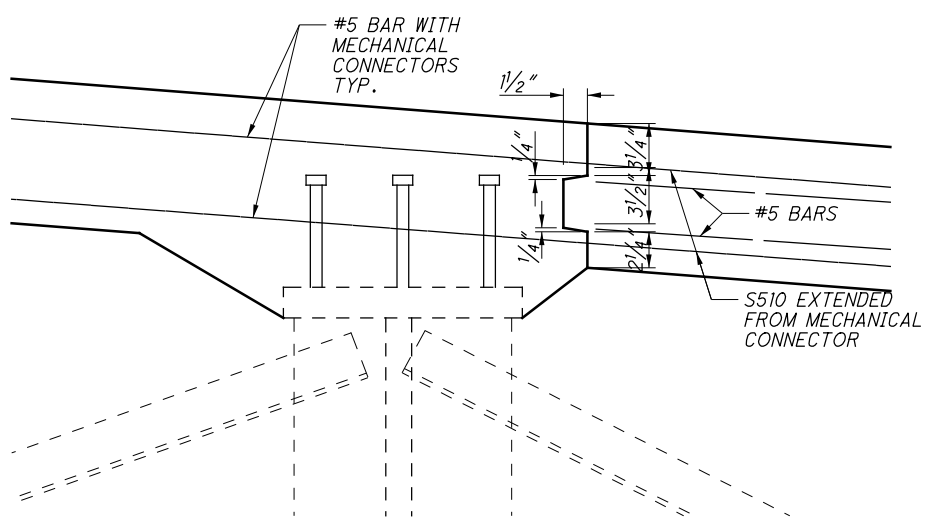


TYPICAL CONSTRUCTION JOINT PLAN

REINFORCING LEGEND

- (A) 1 S.O. 49-S503 BOT. 1 S.O. 49-S592 TOP @ 5 3/4" = 23'-0"
- (B) 482-S505 BOT., 482-S590 TOP, 482-S510 TOP, 482-S580 T&B @ 5 3/4" = 230'-5 3/4" (MEASURED ALONG CONSTRUCTION JOINT)
- (C) 1 S.O. 38-S506 T&B @ 5 3/4" = 17'-8 3/4"
- (D) 1 S.O. 51-S507 T&B @ 5 3/4" = 23'-11 1/2"
- (E) 486 S505 BOT., 486-S590 TOP, 486-S510 TOP, 486 S580 T&B @ 5 3/4" (MAX.) = 232'-1" (MEASURED ALONG EDGE OF DECK)
- (F) 1 S.O. 39-S509 BOT., 1 S.O. 39-S593 TOP @ 5 3/4" = 17'-9"
- (G) 138-S501, S511 PAIRS @ 5" (MAX.) TOP OVER PIERS

LEGEND:
 BRGS. = BEARINGS
 F.A. = FORWARD ABUTMENT
 R.A. = REAR ABUTMENT
 S.O. = SERIES OF
 SPA. = SPACES
 T&B = TOP AND BOTTOM



CONSTRUCTION JOINT DETAIL

- NOTES:**
- MINIMUM LAP LENGTHS:
 #4 BAR = 1'-10"
 #5 BAR = 2'-10"
 - FOR DECK LAYOUT INFORMATION SEE GENERAL PLAN ON SHEET 3/57.

DESIGNED SJA	CHECKED XAC	DRAWN SJA	REVISED	REVIEWED DWL	DATE 2/20/2017
				STRUCTURE FILE NUMBER 3106888	
DECK PLAN - LEFT BRIDGE			HAM-71-1068L		
IR-71 OVER STEWART ROAD			312 PLUM ST. CINCINNATI, OH		
HAM-IR71-8.42		PID No. 91826			
31/57		398		441	

P:\PR54704\HAM-91826\Design\Structures\HAM071_1068L_Sheets\071_1068L_SLO01.dgn Sheet 2/27/2018 9:06:29 AM chen

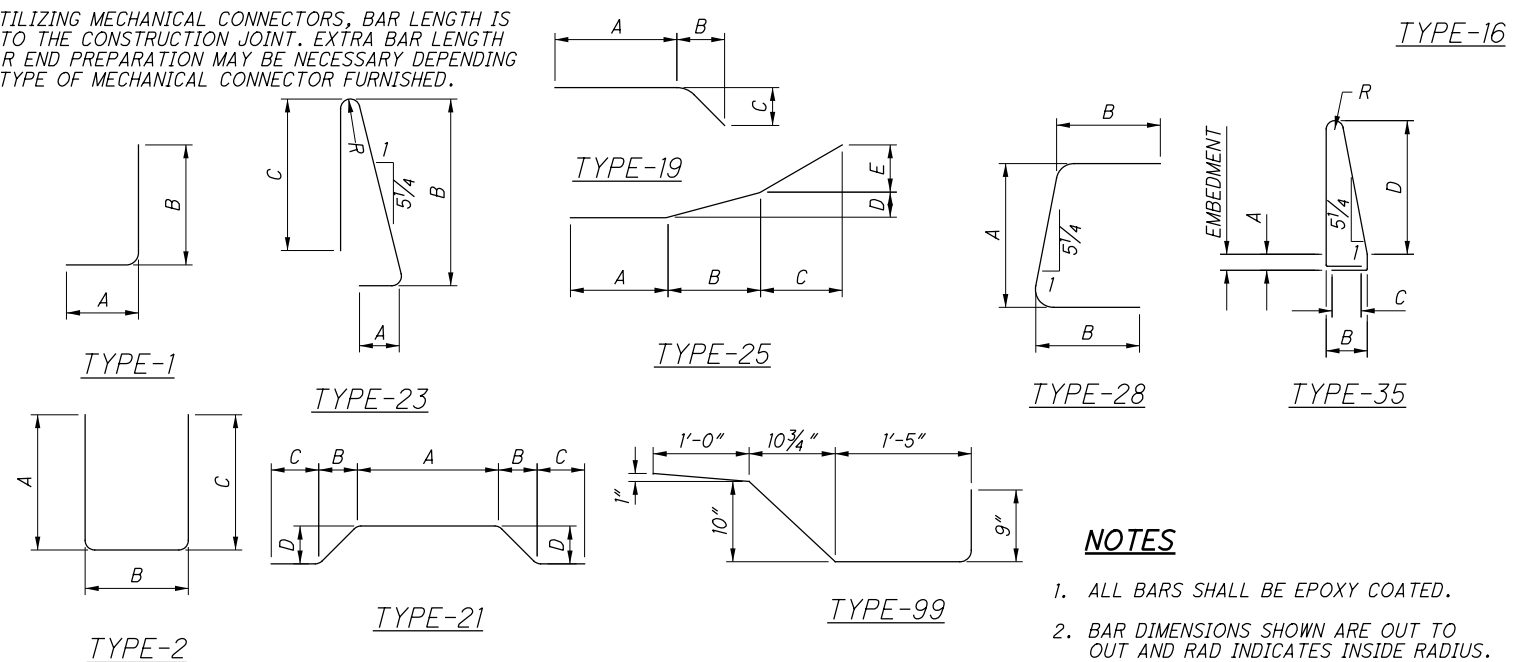
MARK	NUMBER TOTAL	LENGTH	WEIGHT	TYPE	DIMENSIONS						
					A	B	C	D	E	R	INC
SUPERSTRUCTURE REINFORCING STEEL LIST											
S401	207	30'-0"	4148	STR							
S402	138	19'-3"	1775	STR							
S403	69	22'-8"	1045	STR							
S501	914	30'-0"	28599	STR							
S502	70	13'-5"	980	STR							
	1 SR	3'-8"									
* S503	OF	TO	824	STR							0'-6"
	49	28'-7"									
S504	36	4'-2"	156	STR							
* S505	968	28'-6"	28774	STR							
	2 SR	3'-7"									
* S506	OF	TO	1262	STR							0'-8"
	38	28'-3"									
	2 SR	1'-6"									
* S507	OF	TO	1569	STR							0'-6 1/4"
	51	28'-0"									
* S508	8	3'-3"	27	19	0'-6"	2'-3"	1'-8"				
	1 SR	3'-8"									
S509	OF	TO	654	STR							0'-8"
	39	28'-6"									
S510	1036	9'-7"	10355	16	9'-0"						
S511	276	32'-10"	9452	STR							
* S512	2	11'-4"	24	STR							
* S513	2	11'-10"	25	STR							
* S514	2	7'-8"	16	STR							
* S515	2	7'-10"	16	STR							
S580	2012	3'-0"	6295	STR							
* S590	968	29'-1"	29363	16	28'-6"						
	1 SR	4'-3"			3'-8"						
* S592	OF	TO	853	16	TO						0'-6"
	49	29'-2"			28'-7"						
	1 SR	4'-3"			3'-8"						
S593	OF	TO	677	16	TO						0'-8"
	39	29'-1"			28'-6"						
S597	228	5'-5"	1288	21	1'-2"	0'-10"	1'-0"	0'-10"			
S598	152	2'-1"	330	1	0'-9"	1'-5"					
S599	304	4'-0"	1268	99							
		TOTAL	129,775								

MARK	NUMBER TOTAL	LENGTH	WEIGHT	TYPE	DIMENSIONS						
					A	B	C	D	E	R	INC
APPROACH SLAB REINFORCING STEEL LIST **											
AS511	42	12'-0"	526	STR							
AS512	42	9'-6"	416	STR							
AS513	178	30'-0"	5570	STR							
AS514	1	23'-8"	25	STR							
AS515	1	24'-3"	25	STR							
AS516	47	7'-6"	368	STR							
AS517	47	5'-3"	257	STR							
AS518	38	24'-0"	951	STR							
AS519	1	24'-2"	25	STR							
AS520	76	13'-3"	1050	STR							
AS1011	47	25'-1"	5072	16	23'-8"						
AS1012	1	23'-8"	102	STR							
AS1013	1	24'-3"	100	STR							
AS1014	1	24'-2"	104	STR							
AS1015	47	25'-5"	5140	16	24'-0"						
AS1016	94	25'-5"	10281	16	24'-0"						

** APPROACH SLAB REINFORCING PAYMENT IS INCLUDED WITH ITEM 526, REINFORCED CONCRETE APPROACH SLAB, AS PER PLAN

MARK	NUMBER TOTAL	LENGTH	WEIGHT	TYPE	DIMENSIONS						
					A	B	C	D	E	R	INC
PARAPET REINFORCING STEEL LIST											
R501	270	7'-4"	2065	23	0'-11"	3'-3"	3'-0"			0'-3"	
R502	273	12'-11"	3678	35	0'-7"	1'-5"	1'-0"	4'-7"		0'-3"	
R503	72	30'-0"	2253	STR							
R504	4	6'-8"	28	STR							
R505	NOT USED										
R506	4	1'-10"	8	STR							
R507	NOT USED										
R508	12	14'-8"	184	STR							
R509	120	7'-2"	897	STR							
R510	18	12'-2"	228	STR							
R511	6	11'-9"	74	STR							
R512	4	14'-8"	61	STR							
R513	40	7'-2"	299	STR							
R514	4	14'-6"	60	STR							
R515	2	14'-5"	30	STR							
R516	1	14'-0"	15	STR							
R517	1	13'-6"	14	STR							
R518	1	14'-2"	15	STR							
R519	1	14'-6"	15	STR							
R520	6	14'-6"	91	STR							
R521	6	13'-8"	86	STR							
R522	6	13'-6"	84	STR							
R523	6	14'-2"	89	STR							
R601	270	2'-5"	980	1	1'-0"	1'-7"					
R602	270	3'-1"	1250	28	1'-7"	0'-11"					
R603	2	14'-8"	44	STR							
R604	20	7'-1"	214	STR							
R605	3	12'-2"	55	STR							
R606	1	11'-9"	18	STR							
R607	2	14'-8"	44	STR							
R608	20	7'-2"	215	STR							
R609	2	14'-6"	44	STR							
R610	1	14'-5"	22	STR							
R611	1	13'-8"	21	STR							
R612	1	14'-5"	22	STR							
R613	1	13'-11"	21	STR							
R614	1	14'-0"	21	STR							
		TOTAL	13,245								

* REBAR UTILIZING MECHANICAL CONNECTORS, BAR LENGTH IS MEASURED TO THE CONSTRUCTION JOINT. EXTRA BAR LENGTH AND/OR BAR END PREPARATION MAY BE NECESSARY DEPENDING UPON THE TYPE OF MECHANICAL CONNECTOR FURNISHED.



NOTES

- ALL BARS SHALL BE EPOXY COATED.
- BAR DIMENSIONS SHOWN ARE OUT TO OUT AND RAD INDICATES INSIDE RADIUS.

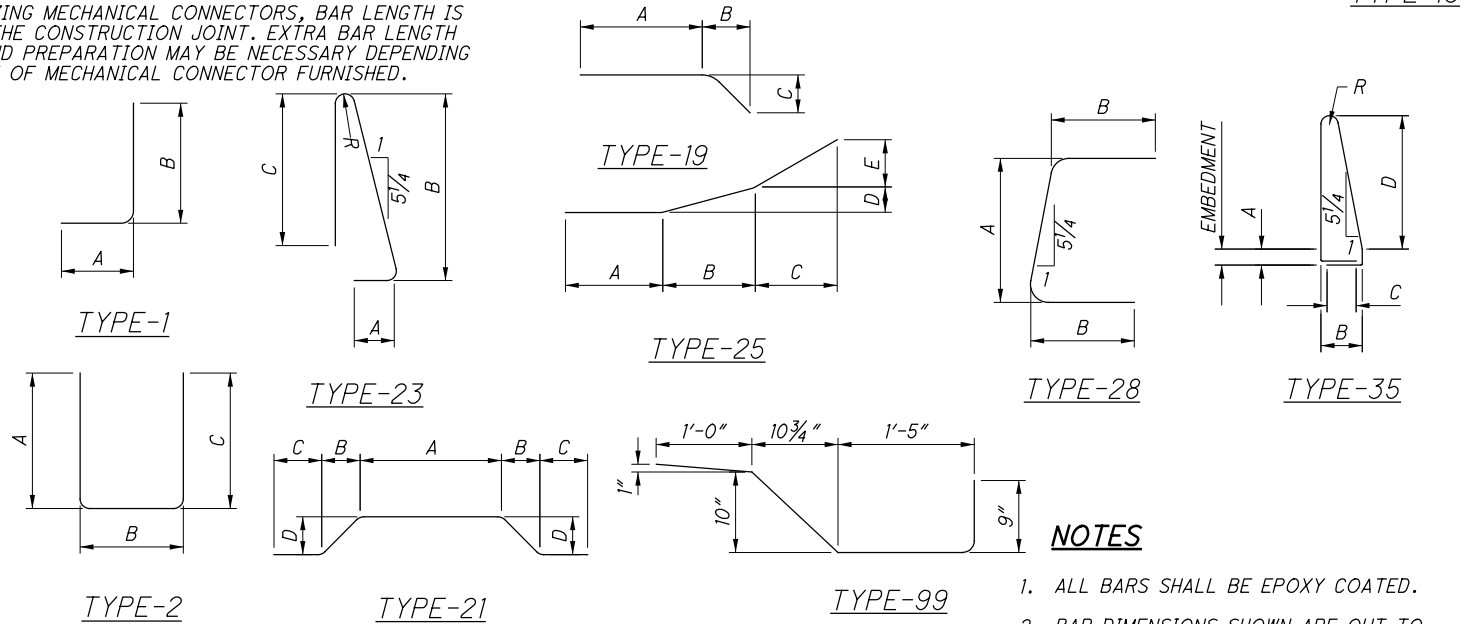
P:\PR54704\HAM_91826\Design\Structures\HAM071_1068L_Sheets\071_1068L_SLO03.dgn Sheet 2/27/2018 9:08:49 AM chen

MARK	NUMBER TOTAL	LENGTH	WEIGHT	TYPE	DIMENSIONS						
					A	B	C	D	E	R	INC
SUPERSTRUCTURE REINFORCING STEEL LIST											
S450	336	30'-0"	6733	STR							
S451	224	24'-8"	3691	STR							
S452	112	38'-3"	2862	STR							
S550	1698	30'-0"	53130	STR							
S551	114	12'-8"	1506	STR							
S552	896	36'-0"	33643	STR							
	1 SR	3'-9"									
S553	OF	TO	781	STR							0'-7"
	45	29'-6"									
	2 SR	2'-10"									
S554	OF	TO	673	STR							0'-7"
	29	19'-5"									
S555	866	32'-8"	29506	STR							
	2 SR	2'-10"									
S556	OF	TO	1585	STR							0'-8 1/2"
	43	32'-6"									
	2 SR	4'-4"									
S557	OF	TO	1309	STR							0'-8 1/2"
	37	29'-7"									
S558	18	4'-3"	80	STR							
S559	20	5'-0"	104	STR							
S560	1011	9'-7"	10105	16	9'-0"						
	2 SR	1'-4"									
* S561	OF	TO	1537	STR							0'-6 3/4"
	49	28'-9"									
* S562	962	15'-2"	15218	STR							
	1 SR	3'-9"									
S563	OF	TO	747	STR							0'-8 3/4"
	40	32'-1"									
* S564	4	16'-2"		STR							
S565	2	36'-10"	77	STR							
* S566	1026	3'-0"	3210	STR							
S567	2	20'-11"	44	STR							
S568	481	20'-0"	10034	STR							
S569	481	20'-7"	10326	16	20'-0"						
* S589	10	3'-3"	34	19	0'-6"	2'-3"	1'-8"				
S591	462	30'-7"	14737	16	30'-0"						
	1 SR	4'-4"			3'-9"						
S594	OF	TO	806	16	TO						0'-7"
	45	30'-1"			29'-6"						
	1 SR	4'-4"			3'-9"						
S595	OF	TO	772	16	TO						0'-8 3/4"
	40	32'-8"			32'-1"						
S597	332	5'-5"	1876	21	1'-2"	0'-10"	1'-0"	0'-10"			
S599	83	4'-0"	346	99							
TOTAL		205,472									

MARK	NUMBER TOTAL	LENGTH	WEIGHT	TYPE	DIMENSIONS						
					A	B	C	D	E	R	INC
APPROACH SLAB REINFORCING STEEL LIST *											
AS501	223	30'-0"	6978	STR							
AS502	41	12'-9"	545	STR							
AS503	111	24'-3"	2807	STR							
AS504	41	34'-3"	1465	STR							
AS505	1	24'-8"	26	STR							
AS506	47	12'-8"	621	STR							
AS507	47	20'-6"	1005	STR							
AS508	1	24'-2"	25	STR							
AS509	1	23'-6"	25	STR							
AS1001	125	25'-6"	13716	16	24'-1"						
AS1002	1	13'-0"	56	STR							
AS1003	1	26'-1"	112	16	24'-8"						
AS1004	1	24'-6"	105	STR							
AS1005	1	24'-2"	104	STR							
AS1006	1	23'-10"	103	STR							
AS1007	1	23'-6"	101	STR							
AS1008	153	25'-4"	16678	16	23'-11"						

MARK	NUMBER TOTAL	LENGTH	WEIGHT	TYPE	DIMENSIONS						
					A	B	C	D	E	R	INC
PARAPET REINFORCING STEEL LIST											
R501	295	7'-4"	2256	23	0'-11"	3'-3"	3'-0"				0'-3"
R502	303	12'-11"	4082	35	0'-7"	1'-5"	1'-0"	4'-7"			0'-3"
R503	76	30'-0"	2378	STR							
R504	NOT USED										
R505	4	5'-2"	22	STR							
R506	NOT USED										
R507	4	26'-5"	110	STR							
R508-R523	NOT USED										
R524	12	14'-8"	184	STR							
R525	132	7'-2"	987	STR							
R526	24	11'-11"	298	STR							
R527	6	11'-7"	72	STR							
R528	4	14'-8"	61	STR							
R529	44	7'-2"	329	STR							
R530	6	13'-2"	82	STR							
R531	2	13'-3"	28	STR							
R532	1	14'-6"	15	STR							
R533	1	14'-0"	15	STR							
R534	1	13'-10"	14	STR							
R534	1	14'-2"	15	STR							
R536	6	14'-0"	88	STR							
R537	6	13'-1"	82	STR							
R538	6	13'-11"	87	STR							
R539	6	14'-7"	91	STR							
R601	295	2'-5"	1071	1	1'-0"	1'-7"					
R602	295	3'-1"	1366	28	1'-7"	0'-11"					
R603-R614	NOT USED										
R615	2	14'-8"	44	STR							
R616	22	7'-2"	237	STR							
R617	4	11'-11"	72	STR							
R618	1	11'-7"	17	STR							
R619	2	14'-8"	44	STR							
R620	22	7'-2"	237	STR							
R621	3	13'-2"	59	STR							
R622	1	13'-3"	20	STR							
R623	1	14'-4"	22	STR							
R624	1	13'-11"	21	STR							
R625	1	13'-9"	21	STR							
R626	1	14'-1"	21	STR							
TOTAL		14,548									

* REBAR UTILIZING MECHANICAL CONNECTORS, BAR LENGTH IS MEASURED TO THE CONSTRUCTION JOINT. EXTRA BAR LENGTH AND/OR BAR END PREPARATION MAY BE NECESSARY DEPENDING UPON THE TYPE OF MECHANICAL CONNECTOR FURNISHED.



NOTES

1. ALL BARS SHALL BE EPOXY COATED.
2. BAR DIMENSIONS SHOWN ARE OUT TO OUT AND RAD INDICATES INSIDE RADIUS.

REINFORCING STEEL LIST 3

HAM-71-1068R
IR-71 OVER STEWART ROAD

DESIGN AGENCY: BURGESS & NIPLE
312 PLUM ST. CINCINNATI, OH

REVIEWED: DWL 2/20/2017
STRUCTURE FILE NUMBER: 3106896

DRAWN: SJA
CHECKED: XAC

DESIGNED: SJA
CHECKED: XAC

HAM-IR71-8.42
PID No. 91826

56/57

423
441

P:\PR54704\HAM\91826\Design\Lighting\Sheets\91826_L5001.dgn Sheet 2/22/2018 3:33:41 PM sbell

REF NO.	SHEET NO.	STATION TO STATION				625	625	625	625		625	625	625	625	625	625	625	625	625	625	625	625			
						CONNECTION, FUSED PULL APART EACH	CONNECTION, UNFUSED PULL APART EACH	CONNECTION, UNFUSED PERMANENT EACH	LIGHT POLE, CONVENTIONAL EACH		LIGHT TOWER, BBBBBB100 EACH	LIGHT POLE FOUNDATION, 24" X 6' DEEP EACH	LIGHT TOWER FOUNDATION, 36" X 25' DEEP EACH	LIGHT POLE FOUNDATION, 24" X 10' DEEP EACH	BRACKET ARM, 12' EACH	BRACKET ARM, 15' EACH	BRACKET ARM, 18' EACH	BRACKET ARM, 20' EACH		NO. 2 AWG 2400 VOLT DISTRIBUTION CABLE FT	NO. 4 AWG 2400 VOLT DISTRIBUTION CABLE FT	NO. 10 AWG POLE AND BRACKET CABLE FT	CONDUIT CLEANED AND CABLES REMOVED FT		
1	326	407+69.00	RT			2	1				1		1												
2	326	407+78.90	RT																						
3	326	407+90.00	RT					3																	
4	326	410+88.00	RT																						
5	326	412+00.00	RT																						
6	326	412+17.89	RT			2	1				1		1												
7	326	412+08.00	RT																						
8	327	479+24.75	LT																						
9	327	473+23.00	LT																						
10	328	541+30.00	RT			2	1				1		1								162				
11	328	541+38.00	RT																						
12	328	544+59.00	RT			2	1				1		1									162			
13	328	544+46.00	RT																						
14	328	547+65.00	RT			2	1				1		2									162			
15	328	547+74.00	RT																						
16	328	548+50.00	RT																						
17	329	579+00.00	RT			2	1				1	1										126			
18	329	579+39.00	RT																						
19					NOT USED																				
20	329	581+15.00	RT																						
21	329	581+60.00	RT			2	1				1	1										126			
22	330	629+90.00	LT			2	1				1		1									126			
23	330	629+90.00	RT			2	1				1		1									126			
24	330	630+37.00	LT																						
25	330	631+60.00	LT			2	1				1	1										126			
26	330	631+63.00	RT			2	1				1	1										126			
27	330	631+78.00	RT																						
28	326	410+45.00	RT																						
29	326	412+24.00	RT																						
30	328	540+30.00	RT																						
31	329	582+08.00	LT			2	1				1	1										126			
32					NOT USED																				
33	330	628+40.00	LT																						
34	326	407+78.9	RT	TO	407+90	RT															63	11			
35	326	412+00	RT	TO	412+17.89	RT															54	8			
36	328	540+30.00	RT	TO	541+30.00																	327	105		
37	328	541+30.00	RT	TO	544+46.00	RT																1002	330		
38	328	544+46.00	RT	TO	547+65.00	RT																927	305		
39	328	547+65.00	RT	TO	548+50.00	RT																267	85		
40	329	582+08.00	LT	TO	582+51.00	LT																150	46		
41	329	577+58	RT	TO	579+00	RT	2	1														450	140		
42	329	579+00	RT	TO	579+19	RT																57	19		
43	329	581+42	RT	TO	581+60	RT																81	18		
44	329	581+60	RT	TO	582+63	RT	2	1														327	100		
45	330	626+88	LT	TO	628+40	LT																465	146		
46	330	628+40	LT	TO	628+97	LT	2	1														189	55		
47	330	628+40	LT	TO	629+90	LT																462			
48	330	631+60	LT	TO	631+76	LT																57	149		
49	330	631+76	LT	TO	632+75	LT	2	1														315	95		
50	330	629+90	RT	TO	630+16	RT																102	30		
51	330	631+63	RT	TO	631+84	RT																87	25		
TOTALS CARRIED TO GENERAL SUMMARY						32	16	51	10		2	4	2	6	7	2	2	2			2640	2742	1368	588	1094

LIGHTING SUBSUMMARY

HAM-IR71-8.42

CALCULATED
STB
CHECKED
SCS

323
441

P:\PR54704\HAM-91826\Design\Lighting\Sheets\91826_L_S002.dgn Sheet 2/22/2018 2:45:40 PM sbell

REF NO.	SHEET NO.	STATION TO STATION		625		625		625		625		625		625		625		625		625											
				LUMINAIRE, CONVENTIONAL, AS PER PLAN	LUMINAIRE, HIGH MAST	TRENCH	PULL BOX, 725.08, 18"	GROUND ROD	PLASTIC CAUTION TAPE	LIGHT TOWER REMOVED	LIGHT POLE REMOVED	LIGHT POLE FOUNDATION REMOVED	LUMINAIRE REMOVED	LIGHT TOWER FOUNDATION REMOVED	DISCONNECT CIRCUIT, AS PER PLAN	DISTRIBUTION CABLE REMOVED															
				EACH	EACH	FT	EACH	EACH	FT	EACH	EACH	EACH	EACH	EACH	EACH	EACH	EACH	FT													
1	326	407+69.00	RT									1				6	1	1													
2	326	407+78.90	RT					6			2																				
3	326	407+90.00	RT						1																						
4	326	410+88.00	RT						1																						
5	326	412+00.00	RT						1																						
6	326	412+17.89	RT								2																				
7	326	412+08.00	RT									1				6	1	1													
8	327	479+24.75	LT						1																						
9	327	473+23.00	LT						1																						
10	328	541+30.00	RT	TO	544+59.00	RT					1																				
11	328	541+38.00	RT										1	1	2			1													
12	328	544+59.00	RT					2			1																				
13	328	544+46.00	RT										1	1	2			1													
14	328	547+65.00	RT					2			1																				
15	328	547+74.00	RT										1	1	2			1													
16	328	548+50.00	RT						1									1													
17	329	579+00.00	RT					1			1							1													
18	329	579+39.00	RT										1		1			1													
19					NOT USED																										
20	329	581+15.00	RT										1		1			1													
21	329	581+60.00	RT					1			1							1													
22	330	629+90.00	LT					1			1							1													
23	330	629+90.00	RT	TO	630+16.00	RT					1							1													
24	330	630+37.00	LT										1		1			1													
25	330	631+60.00	LT	TO	631+76.00	LT					1							1													
26	330	631+63.00	RT	TO	631+84.00	RT					1							1													
27	330	631+78.00	RT										1	1	1			1													
28	326	410+45.00	RT						1																						
29	326	412+24.00	RT						1																						
30	328	540+30.00	RT						1	1								1													
31	329	582+08.00	LT					1			1							1													
32					NOT USED																										
33	330	628+40.00	LT							1								1													
34	326	407+78.9	RT	TO	407+90	RT														15											
35	326	412+00	RT	TO	412+17.89	RT														17											
36	328	540+30.00	RT	TO	541+30.00	RT				100										105											
37	328	541+30.00	RT	TO	544+46.00	RT				320										330											
38	328	544+46.00	RT	TO	547+65.00	RT				295										305											
39	328	547+65.00	RT	TO	548+50.00	RT				80										85											
40	329	582+08.00	LT	TO	582+51.00	LT				41																					
41	329	577+58	RT	TO	579+00	RT																									
42	329	579+00	RT	TO	579+19	RT																									
43	329	581+42	RT	TO	581+60	RT																									
44	329	581+60	RT	TO	582+63	RT																									
45	330	626+88	LT	TO	628+40	LT																									
46	330	628+40	LT	TO	628+97	LT																									
47	330	628+40	LT	TO	629+90	LT																									
48	330	631+60	LT	TO	631+76	LT				144																					
49	330	631+76	LT	TO	632+75	LT																									
50	330	629+90	RT	TO	630+16	RT				25																					
51	330	631+63	RT	TO	631+84	RT				20																					
TOTALS CARRIED TO GENERAL SUMMARY								13		12	1047			9		15	1047			2		7	4		22		2		19		857

CALCULATED	STB		
	CHECKED		
SCS			
LIGHTING SUBSUMMARY			
HAM - IR71 - 8.42			
<table border="1"> <tr> <td>324</td> </tr> <tr> <td>441</td> </tr> </table>		324	441
324			
441			

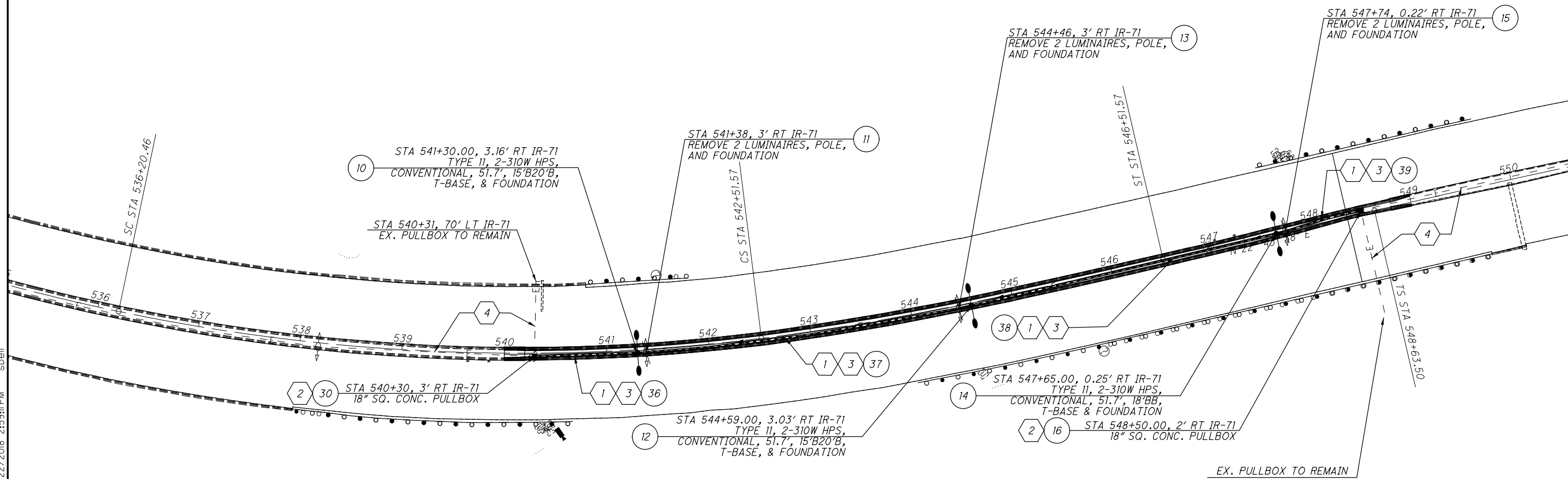


CALCULATED SDC
CHECKED SCS

**LIGHTING PLAN - IR-71 NORTH CROSSOVER
FOR MOT, STA 540+00 TO STA 549+00**

HAM-IR71-8.42

P:\PR54704\HAM_91826\Design\Lighting\Sheets\91826_LP003.dgn Sheet 2/22/2018 2:59:11 PM sbell

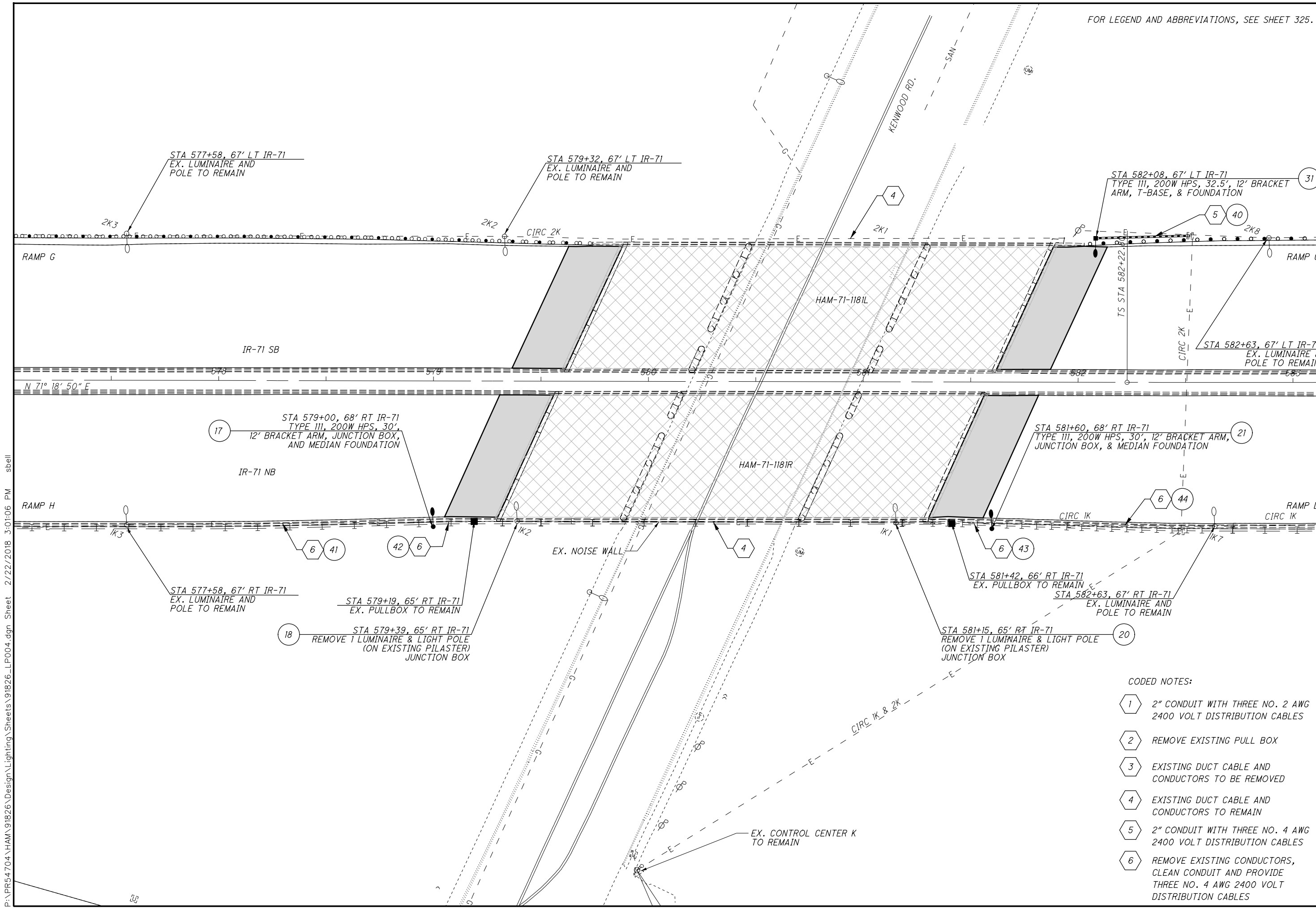


CODED NOTES:

- 1 2" CONDUIT WITH THREE NO. 2 AWG 2400 VOLT DISTRIBUTION CABLES
- 2 REMOVE EXISTING PULL BOX
- 3 EXISTING DUCT CABLE AND CONDUCTORS TO BE REMOVED
- 4 EXISTING DUCT CABLE AND CONDUCTORS TO REMAIN
- 5 2" CONDUIT WITH THREE NO. 4 AWG 2400 VOLT DISTRIBUTION CABLES
- 6 REMOVE EXISTING CONDUCTORS, CLEAN CONDUIT AND PROVIDE THREE NO. 4 AWG 2400 VOLT DISTRIBUTION CABLES



CALCULATED
SDC
CHECKED
SCS



LIGHTING PLAN - IR-71
KENWOOD ROAD HAM-71-1181L / R

P:\PR54704\HAM\91826\Design\Lighting\Sheets\91826_LP004.dgn Sheet 2/22/2018 3:01:06 PM sbell

CODED NOTES:

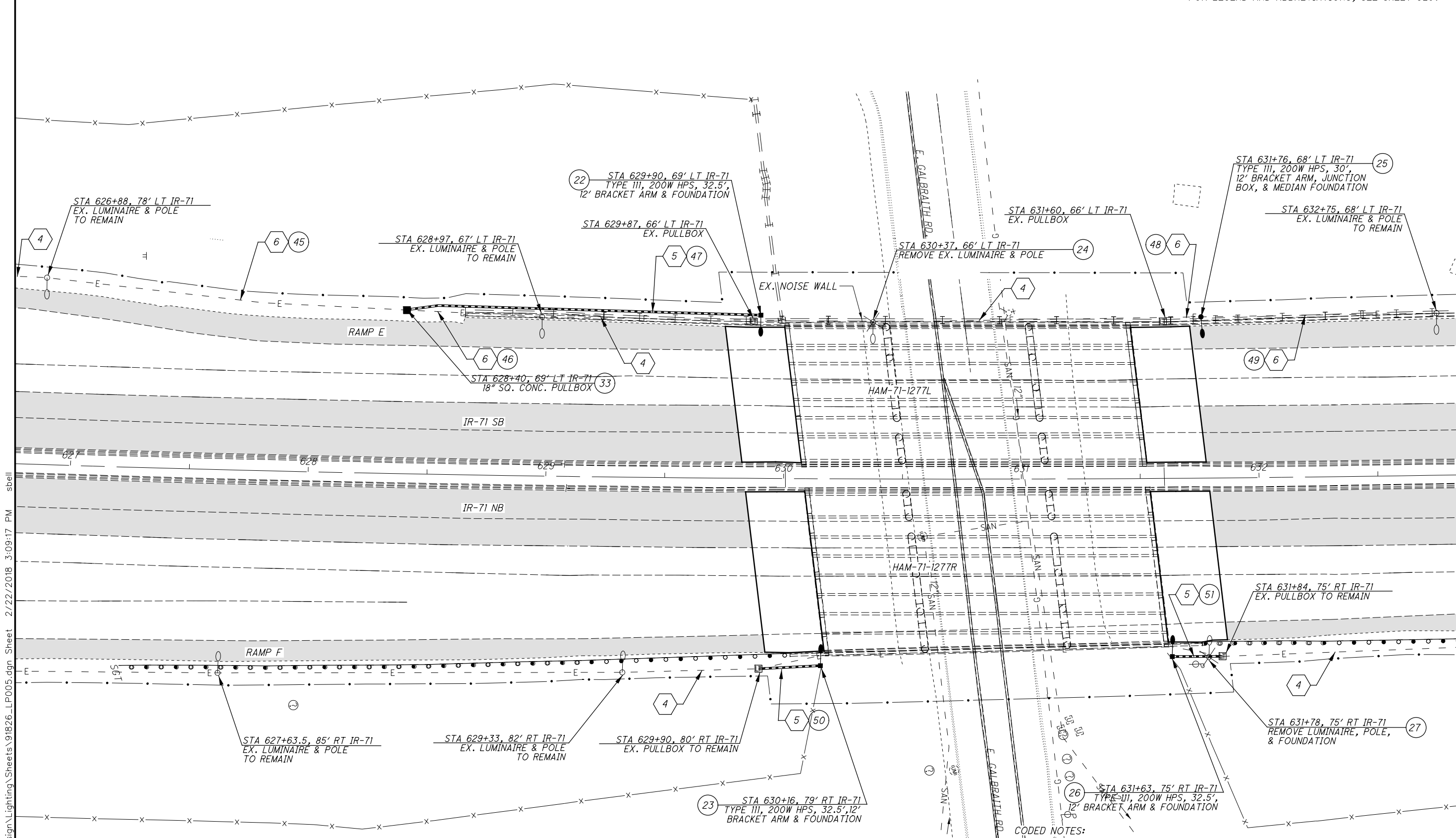
- ① 2" CONDUIT WITH THREE NO. 2 AWG 2400 VOLT DISTRIBUTION CABLES
- ② REMOVE EXISTING PULL BOX
- ③ EXISTING DUCT CABLE AND CONDUCTORS TO BE REMOVED
- ④ EXISTING DUCT CABLE AND CONDUCTORS TO REMAIN
- ⑤ 2" CONDUIT WITH THREE NO. 4 AWG 2400 VOLT DISTRIBUTION CABLES
- ⑥ REMOVE EXISTING CONDUCTORS, CLEAN CONDUIT AND PROVIDE THREE NO. 4 AWG 2400 VOLT DISTRIBUTION CABLES

HAM-IR71-8.42



LIGHTING PLAN - IR-71
GALBRAITH ROAD AND HAM-71-1277R/L

HAM-IR71-8.42



CODED NOTES:

- ① 2" CONDUIT WITH THREE NO. 2 AWG 2400 VOLT DISTRIBUTION CABLES
- ② REMOVE EXISTING PULL BOX
- ③ EXISTING DUCT CABLE AND CONDUCTORS TO BE REMOVED
- ④ EXISTING DUCT CABLE AND CONDUCTORS TO REMAIN
- ⑤ 2" CONDUIT WITH THREE NO. 4 AWG 2400 VOLT DISTRIBUTION CABLES
- ⑥ REMOVE EXISTING CONDUCTORS, CLEAN CONDUIT AND PROVIDE THREE NO. 4 AWG 2400 VOLT DISTRIBUTION CABLES.

P:\PR54704\HAM\91826\Design\Lighting\Sheets\91826_LP005.dgn Sheet 2/22/2018 3:09:17 PM sbell