

P:\PR54704\HAM\91826\Design\Roadway\Sheets\91826_GG009.dgn Sheet 2/26/2018 5:46:31 PM chen

SHEET NUM.										PART.			ITEM	ITEM EXT	GRAND TOTAL	UNIT	DESCRIPTION	SEE SHEET NO.
										01/IMS/PV	02/IMS/BR	03/						
STRUCTURE OVER 20 FOOT SPAN (HAM-71-1068L)																		
												LS	201	11001	LS		CLEARING AND GRUBBING, AS PER PLAN	339
												LS	202	11203	LS		PORTIONS OF STRUCTURE REMOVED, OVER 20 FOOT SPAN, AS PER PLAN	339
												296	202	22900	296	SY	APPROACH SLAB REMOVED	
												12	202	98100	12	EACH	REMOVAL MISC.: SCUPPER AND DOWNSPOUT REMOVAL (EACH)	369
												LS	503	11100	LS		COFFERDAMS AND EXCAVATION BRACING	
												83	503	21100	83	CY	UNCLASSIFIED EXCAVATION	
												154,359	509	10000	154,359	LB	EPOXY COATED REINFORCING STEEL	
												306	510	10001	306	EACH	DOWEL HOLES WITH NONSHRINK, NONMETALLIC GROUT, AS PER PLAN	339
												467	511	34447	467	CY	CLASS QC2 CONCRETE WITH QC/QA, BRIDGE DECK, AS PER PLAN	343
												128	511	34449	128	CY	CLASS QC2 CONCRETE, BRIDGE DECK (PARAPET), AS PER PLAN	343
												71	511	44110	71	CY	CLASS QC1 CONCRETE, ABUTMENT NOT INCLUDING FOOTING	
												LS	511	81200	LS		CONCRETE, MISC.: SURVEYING EXISTING BRIDGE	410
												1,553	512	10100	1,553	SY	SEALING OF CONCRETE SURFACES (EPOXY-URETHANE)	
												120	SPECIAL	51271500	120	SY	URETHANE TOP COAT SEALER	341
												1,553	512	74000	1,553	SY	REMOVAL OF EXISTING COATINGS FROM CONCRETE SURFACES	
												4,053	513	20000	4,053	EACH	WELDED STUD SHEAR CONNECTORS	
												250	513	95030	250	EACH	STRUCTURAL STEEL, MISC.: WELDING CROSSFRAME STIFFENERS	392
												80	513	95030	80	EACH	STRUCTURAL STEEL, MISC.: DRILLING STRUCTURAL STEEL, GRINDING, AND NDT	339
												160	513	95030	160	EACH	STRUCTURAL STEEL, MISC.: PENCIL ABRASIVE BLASTING, GRINDING, AND NDT	340
												6	513	95030	6	EACH	STRUCTURAL STEEL, MISC.: INTERMEDIATE CROSSFRAME	392
												3	513	95030	3	EACH	STRUCTURAL STEEL, MISC.: REMOVE EXISTING INTERMEDIATE CROSSFRAME	390
												2	513	95030	2	EACH	STRUCTURAL STEEL, MISC.: FIELD WELD CRACK REPAIR	390A
												1	513	95030	1	EACH	STRUCTURAL STEEL, MISC.: BEARING STIFFENER REPAIR	390A
												482	514	00050	482	SF	SURFACE PREPARATION OF EXISTING STRUCTURAL STEEL	
												482	514	00056	482	SF	FIELD PAINTING OF EXISTING STRUCTURAL STEEL, PRIME COAT	
												482	514	00060	482	SF	FIELD PAINTING STRUCTURAL STEEL, INTERMEDIATE COAT	
												482	514	00066	482	SF	FIELD PAINTING STRUCTURAL STEEL, FINISH COAT	
												1	514	00504	1	MNHR	GRINDING FINS, TEARS, SLIVERS ON EXISTING STRUCTURAL STEEL	
												1	514	10000	1	EACH	FINAL INSPECTION REPAIR	
												413	514	20001	413	SF	FIELD PAINTING OF DAMAGED STRUCTURAL STEEL, AS PER PLAN	340
												146	516	11210	146	FT	STRUCTURAL EXPANSION JOINT INCLUDING ELASTOMERIC STRIP SEAL	
												140	516	14020	140	FT	SEMI-INTEGRAL ABUTMENT EXPANSION JOINT SEAL	
												7	516	44201	7	EACH	ELASTOMERIC BEARING WITH INTERNAL LAMINATES AND LOAD PLATE (NEOPRENE), AS PER PLAN, 11 1/2"x1'-2"x3.22"	340
												7	516	44401	7	EACH	ELASTOMERIC BEARING WITH INTERNAL LAMINATES AND LOAD PLATE (NEOPRENE), AS PER PLAN, 11 1/2"x1'-1"x5.04"	340
												LS	516	47000	LS		JACKING AND TEMPORARY SUPPORT OF SUPERSTRUCTURE	
												LS	518	21230	LS		POROUS BACKFILL WITH GEOTEXTILE FABRIC	
												1,647	SPECIAL	51900100	1,647	SF	COMPOSITE FIBER WRAP SYSTEM	
												12	519	11101	12	SF	PATCHING CONCRETE STRUCTURE, AS PER PLAN	340
												296	526	25001	296	SY	REINFORCED CONCRETE APPROACH SLABS (T=15"), AS PER PLAN	343
												141	526	90010	141	FT	TYPE A INSTALLATION	
												40	SPECIAL	53000500	40	hour	STRUCTURES: STRUCTURE INSPECTION AND MECHANIZED ACCESS	340
												502	607	39900	502	FT	VANDAL PROTECTION FENCE, 6' STRAIGHT, COATED FABRIC	
												502	607		502	FT	TEMPORARY FENCE	

GENERAL SUMMARY

HAM-IR71-8.42

▲ - REVISED 02/26/2018
 ▲ - REVISED 02/21/2018
 ▲ - REVISED 01/23/2018

P:\PR54704\HAM\91826\Design\Roadway\Sheets\91826_GG010.dgn Sheet 2/26/2018 5:43:38 PM chen

SHEET NUM.										PART.			ITEM	ITEM EXT	GRAND TOTAL	UNIT	DESCRIPTION	SEE SHEET NO.
01/IMS/PV	02/TMS/BR	03/																
STRUCTURE OVER 20 FOOT SPAN (HAM-71-1068R)																		
										LS	201	11001	LS			CLEARING AND GRUBBING, AS PER PLAN	339	
										LS	202	11203	LS			PORTIONS OF STRUCTURE REMOVED, OVER 20 FOOT SPAN, AS PER PLAN	339	
										454	202	22900	454	SY		APPROACH SLAB REMOVED		
										LS	202	98000	LS			REMOVAL MISC.: SIGN TRUSS SUPPORT BRACKETS	389	
										20	202	98100	20	EACH		REMOVAL MISC.: SCUPPER AND DOWNSPOUT REMOVAL (EACH)	368	
										LS	503	11100	LS			COFFERDAMS AND EXCAVATION BRACING		
										126	503	21100	126	CY		UNCLASSIFIED EXCAVATION		
										235,915	509	10000	235,915	LB		EPOXY COATED REINFORCING STEEL		
										294	510	10001	294	EACH		DOWEL HOLES WITH NONSHRINK, NONMETALLIC GROUT, AS PER PLAN	339	
										763	511	34447	763	CY		CLASS QC2 CONCRETE WITH QC/QA, BRIDGE DECK, AS PER PLAN	343	
										140	511	34449	140	CY		CLASS QC2 CONCRETE, BRIDGE DECK (PARAPET), AS PER PLAN	343	
										105	511	44110	105	CY		CLASS QC1 CONCRETE, ABUTMENT NOT INCLUDING FOOTING		
										LS	511	81200	LS			CONCRETE, MISC.: SURVEYING EXISTING BRIDGE	409	
										1,875	512	10100	1,875	SY		SEALING OF CONCRETE SURFACES (EPOXY-URETHANE)		
										105	SPECIAL	51271500	105	SY		URETHANE TOP COAT SEALER	341	
										1,875	512	74000	1,875	SY		REMOVAL OF EXISTING COATINGS FROM CONCRETE SURFACES		
										6,867	513	20000	6,867	EACH		WELDED STUD SHEAR CONNECTORS		
										466	513	95030	466	EACH		STRUCTURAL STEEL, MISC.: WELDING CROSSFRAME STIFFENERS	392	
										10	513	95030	10	EACH		STRUCTURAL STEEL, MISC.: INTERMEDIATE CROSSFRAME	392	
										450	514	00050	450	SF		SURFACE PREPARATION OF EXISTING STRUCTURAL STEEL		
										450	514	00056	450	SF		FIELD PAINTING OF EXISTING STRUCTURAL STEEL, PRIME COAT		
										450	514	00060	450	SF		FIELD PAINTING STRUCTURAL STEEL, INTERMEDIATE COAT		
										450	514	00066	450	SF		FIELD PAINTING STRUCTURAL STEEL, FINISH COAT		
										1	514	00504	1	MNHR		GRINDING FINES, TEARS, SLIVERS ON EXISTING STRUCTURAL STEEL		
										1	514	10000	1	EACH		FINAL INSPECTION REPAIR		
										621	514	20001	621	SF		FIELD PAINTING OF DAMAGED STRUCTURAL STEEL, AS PER PLAN	340	
										219	516	11210	219	FT		STRUCTURAL EXPANSION JOINT INCLUDING ELASTOMERIC STRIP SEAL		
										213	516	14020	213	FT		SEMI-INTEGRAL ABUTMENT EXPANSION JOINT SEAL		
										11	516	44201	11	EACH		ELASTOMERIC BEARING WITH INTERNAL LAMINATES AND LOAD PLATE (NEOPRENE), AS PER PLAN, 1'-0"x1'-2"x3.25"	340	
										11	516	44201	11	EACH		ELASTOMERIC BEARING WITH INTERNAL LAMINATES AND LOAD PLATE (NEOPRENE), AS PER PLAN, 11 1/2"x1'-2"x3.22"	340	
										LS	516	47000	LS			JACKING AND TEMPORARY SUPPORT OF SUPERSTRUCTURE		
										LS	518	21230	LS			POROUS BACKFILL WITH GEOTEXTILE FABRIC		
										1,997	SPECIAL	51900100	1,997	SF		COMPOSITE FIBER WRAP SYSTEM	341	
										64	519	11101	64	SF		PATCHING CONCRETE STRUCTURE, AS PER PLAN	340	
										454	526	25001	454	SY		REINFORCED CONCRETE APPROACH SLABS (T=15"), AS PER PLAN	343	
										215	526	90010	215	FT		TYPE A INSTALLATION		
										556	607	39900	556	FT		VANDAL PROTECTION FENCE, 6' STRAIGHT, COATED FABRIC		
										556	607		556	FT		TEMPORARY FENCE		
STRUCTURE OVER 20 FOOT SPAN (HAM-71-1149)																		
										LS	202	11203	LS			PORTIONS OF STRUCTURE REMOVED, OVER 20 FOOT SPAN, AS PER PLAN	339	
										1,226	512	10100	1,226	SY		SEALING OF CONCRETE SURFACES (EPOXY-URETHANE)		
										1,136	512	10300	1,136	SY		SEALING CONCRETE BRIDGE DECKS WITH HMW RESIN		
										1,226	512	74000	1,226	SY		REMOVAL OF EXISTING COATINGS FROM CONCRETE SURFACES		
										34,950	514	00050	34,950	SF		SURFACE PREPARATION OF EXISTING STRUCTURAL STEEL		
										34,950	514	00056	34,950	SF		FIELD PAINTING OF EXISTING STRUCTURAL STEEL, PRIME COAT		
										34,950	514	00060	34,950	SF		FIELD PAINTING STRUCTURAL STEEL, INTERMEDIATE COAT		
										34,950	514	00066	34,950	SF		FIELD PAINTING STRUCTURAL STEEL, FINISH COAT		
										24	514	00504	24	MNHR		GRINDING FINES, TEARS, SLIVERS ON EXISTING STRUCTURAL STEEL		
										10	514	10000	10	EACH		FINAL INSPECTION REPAIR		
										LS	518	63300	LS			STRUCTURE DRAINAGE, MISC.: SCUPPER AND DRAINAGE PIPE CLEAN OUT		
										20	519	11101	20	SF		PATCHING CONCRETE STRUCTURE, AS PER PLAN		
										1	519	12300	1	SY		PATCHING CONCRETE BRIDGE DECK - TYPE B		
										1	601	26000	1	CY		DUMPED ROCK FILL, TYPE B		

GENERAL SUMMARY

HAM-IR71-8.42

- REVISED 02/26/2018
 - REVISED 02/23/2018
 - REVISED 02/21/2018
 - REVISED 01/29/2018

P:\PR54704\HAM\91826\Design\Roadway\Sheets\91826_GG011.dgn Sheet 2/26/2018 2:49:36 PM chen

SHEET NUM.										PART.			ITEM	ITEM	GRAND	UNIT	DESCRIPTION	SEE SHEET NO.	CALCULATED JLG CHECKED KSC
										01/IMS/PV	02/IMS/B R	03/		EXT	TOTAL				
											568		607	39930	568	FT	VANDAL PROTECTION FENCE, 12' CURVED, COATED FABRIC		
											568		607		568	FT	TEMPORARY FENCE		
											10		621	54000	10	EACH	RAISED PAVEMENT MARKER REMOVED		
											10		621	00100	10	EACH	RPM		
										STRUCTURE OVER 20 FOOT SPAN (HAM-71-118L)									
											LS		201	11001	LS		CLEARING AND GRUBBING, AS PER PLAN		339
											LS		202	11203	LS		PORTIONS OF STRUCTURE REMOVED, OVER 20 FOOT SPAN, AS PER PLAN		339
											LS		202	98090	LS		REMOVAL MISC. EXPANSION JOINT REMOVAL		433
											3		257	10000	3	SY	DIAMOND GRINDING PORTLAND CEMENT CONCRETE PAVEMENT		
											975		512	10100	975	SY	SEALING OF CONCRETE SURFACES (EPOXY URETHANE)		
											1,289		512	10400	1,289	SY	TREATING OF CONCRETE BRIDGE DECK WITH SRS		
											10		SPECIAL	51271500	10	SY	URETHANE TOP COAT SEALER		341
											975		512	74000	975	SY	REMOVAL OF EXISTING COATINGS FROM CONCRETE SURFACES		
											15,640		514	00050	15,640	SF	SURFACE PREPARATION OF EXISTING STRUCTURAL STEEL		
											15,640		514	00056	15,640	SF	FIELD PAINTING OF EXISTING STRUCTURAL STEEL, PRIME COAT		
											15,640		514	00060	15,640	SF	FIELD PAINTING STRUCTURAL STEEL, INTERMEDIATE COAT		
											15,640		514	00066	15,640	SF	FIELD PAINTING STRUCTURAL STEEL, FINISH COAT		
											23		514	00504	23	MNHR	GRINDING FINES, TEARS, SLIVERS ON EXISTING STRUCTURAL STEEL		
											9		514	10000	9	EACH	FINAL INSPECTION REPAIR		
											126		516	10011	126	FT	ARMORLESS PREFORMED JOINT SEAL, AS PER PLAN		433
											94		SPECIAL	51900100	94	SF	COMPOSITE FIBER WRAP SYSTEM		341
											153		519	11101	153	SF	PATCHING CONCRETE STRUCTURE, AS PER PLAN		340
											LS		SPECIAL	60610900	LS		NOISE BARRIER REPAIR LOOSE OR MISSING SOUNDWALL SHIMS AND WOODEN MEMBERS		343
										STRUCTURE OVER 20 FOOT SPAN (HAM-71-118R)									
											LS		201	11001	LS		CLEARING AND GRUBBING, AS PER PLAN		339
											LS		202	11203	LS		PORTIONS OF STRUCTURE REMOVED, OVER 20 FOOT SPAN, AS PER PLAN		339
											LS		202	98090	LS		REMOVAL MISC. EXPANSION JOINT REMOVAL		433
											3		257	10000	3	SY	DIAMOND GRINDING PORTLAND CEMENT CONCRETE PAVEMENT		
											1,023		512	10100	1,023	SY	SEALING OF CONCRETE SURFACES (EPOXY URETHANE)		
											1,283		512	10400	1,283	SY	TREATING OF CONCRETE BRIDGE DECK WITH SRS		
											1,023		512	74000	1,023	SY	REMOVAL OF EXISTING COATINGS FROM CONCRETE SURFACES		
											15,640		514	00050	15,640	SF	SURFACE PREPARATION OF EXISTING STRUCTURAL STEEL		
											15,640		514	00056	15,640	SF	FIELD PAINTING OF EXISTING STRUCTURAL STEEL, PRIME COAT		
											15,640		514	00060	15,640	SF	FIELD PAINTING STRUCTURAL STEEL, INTERMEDIATE COAT		
											15,640		514	00066	15,640	SF	FIELD PAINTING STRUCTURAL STEEL, FINISH COAT		
											23		514	00504	23	MNHR	GRINDING FINES, TEARS, SLIVERS ON EXISTING STRUCTURAL STEEL		
											9		514	10000	9	EACH	FINAL INSPECTION REPAIR		
											126		516	10011	126	FT	ARMORLESS PREFORMED JOINT SEAL, AS PER PLAN		433
											133		519	11101	133	SF	PATCHING CONCRETE STRUCTURE, AS PER PLAN		341
											LS		SPECIAL	60610900	LS		NOISE BARRIER REPAIR LOOSE OR MISSING SOUNDWALL SHIMS AND WOODEN MEMBERS		340

GENERAL SUMMARY

HAM-IR71-8.42

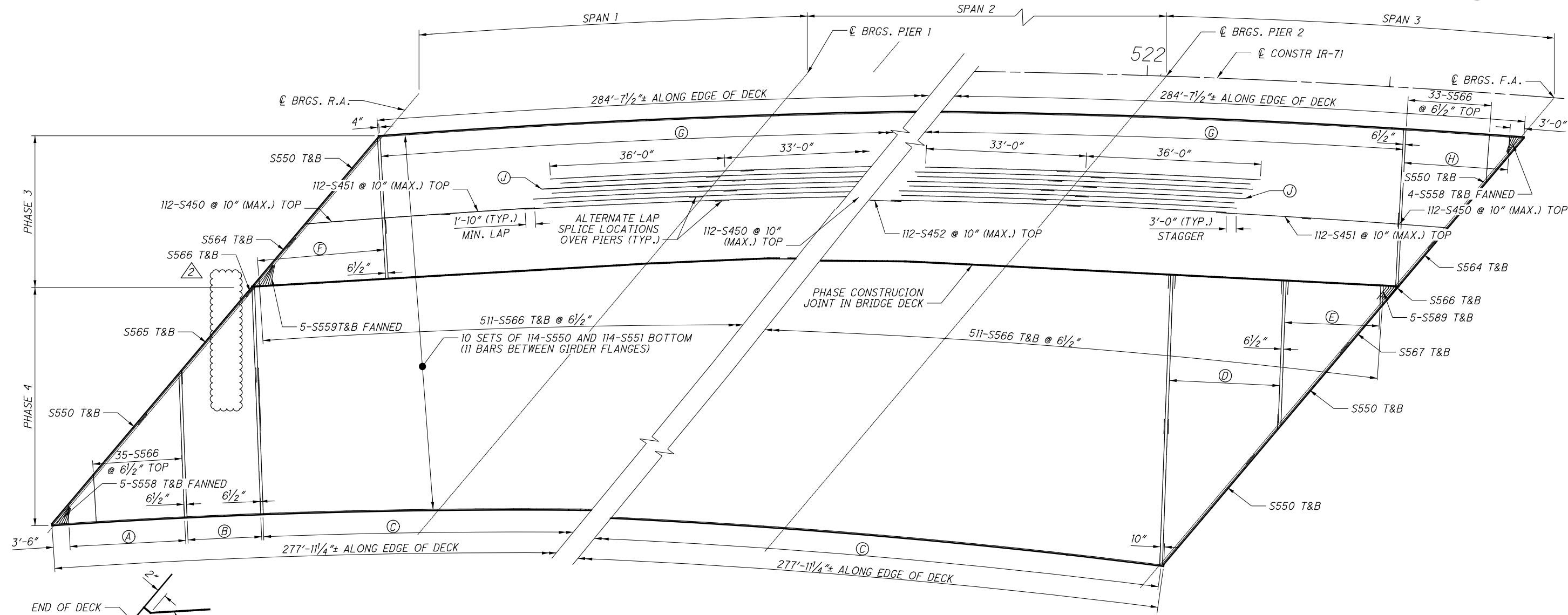
△ - REVISED 02/26/2018

△ - REVISED 01/29/2018

165

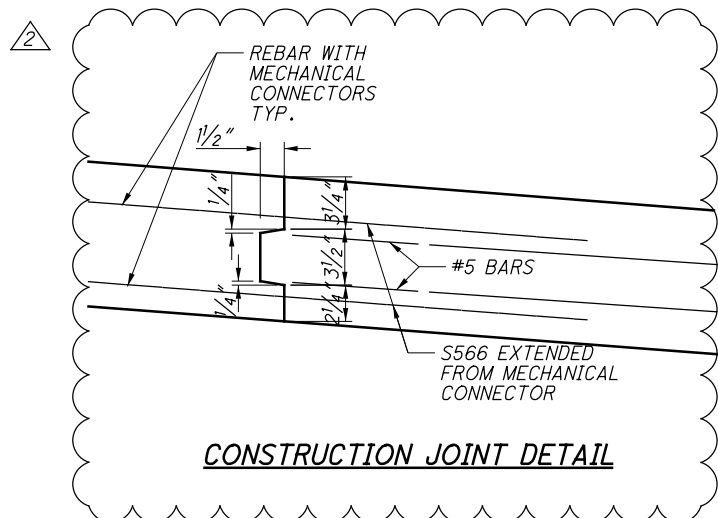
441

P:\PR54704\HAM\91826\Design\Structures\HAM071_1068R\Sheets\071_1068R_SD001.dgn Sheet 2/26/2018 4:59:06 PM chen



DECK PLAN - RIGHT BRIDGE
(RAILING NOT SHOWN)

TYPICAL CONSTRUCTION JOINT PLAN



REINFORCING LEGEND

- (A) 1 S.O. 45-S553 BOT., 1 S.O. 45-S594 TOP @ 6 1/2" = 23'-10"
- (B) 1 S.O. 29-S554 LAPPED WITH 29-S550 BOT., 29-S591 TOP, 29-S560 TOP @ 6 1/2" = 15'-2"
- (C) 433-S555 T&B LAPPED WITH 433-S550 BOT., 433-S591 TOP, 433-S560 TOP @ 6 1/2" (MAX.) = 233'-7" ALTERNATE LAP SPLICE LOCATIONS (MEASURED ALONG CONSTRUCTION JOINT)
- (D) 1 S.O. 43-S556 LAPPED WITH 43-S550 T&B @ 6 1/2" = 22'-9"
- (E) 1 S.O. 37-S557 T&B @ 6 1/2" = 19'-6" T&B
- (F) 1 S.O. 49-S561 T&B @ 6 1/2" = 26'-0"
- (G) 481-S562 T&B LAPPED WITH 481-S568 BOT., 481-S569 TOP, 481-S560 TOP @ 6 1/2" = 259'-8" MEASURED ALONG EDGE OF DECK, ALTERNATE LAP SPLICE LOCATIONS
- (H) 1 S.O. 40-S563 BOT., 1 S.O. 40-S595 TOP @ 6 1/2" = 17'-10 1/2"
- (J) 224-S552 PAIRS @ 5" (MAX.) TOP OVER PIER

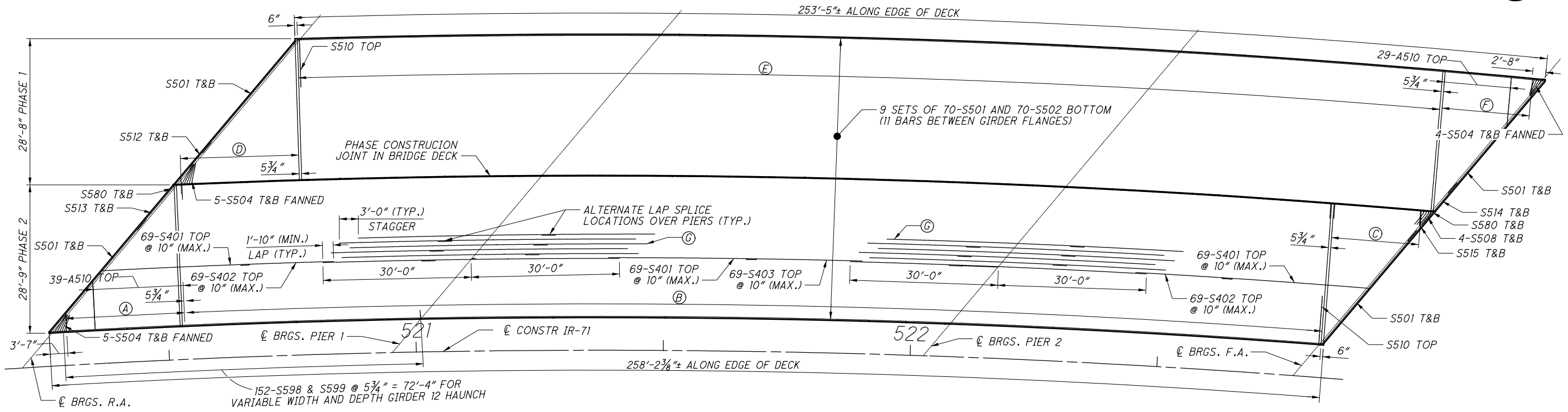
- LEGEND:**
- BRGS. = BEARINGS
 - F.A. = FORWARD ABUTMENT
 - R.A. = REAR ABUTMENT
 - S.O. = SERIES OF
 - SPA. = SPACES
 - T&B = TOP AND BOTTOM

NOTES:

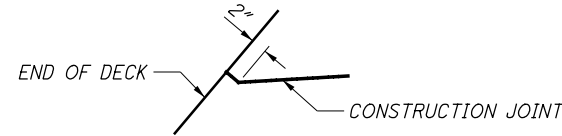
1. MINIMUM LAP LENGTHS:
#4 BAR = 1'-10"
#5 BAR = 2'-10"
2. FOR DECK LAYOUT INFORMATION SEE GENERAL PLAN ON SHEET 3/57.

DESIGNED	SJA	CHECKED	XAC
DRAWN	SJA	REVIEWED	
REVIEWED	DWL	DATE	2/20/2017
DESIGN AGENCY	BURGESS & NIPLÉ		
STRUCTURE FILE NUMBER	3106896		
DECK PLAN - RIGHT BRIDGE HAM-71-1068R IR-71 OVER STEWART ROAD			
HAM-IR71-8.42 PID No. 91826		29/57 396 441	
REVISED 2-26-2018 REVISED 2-21-2018			

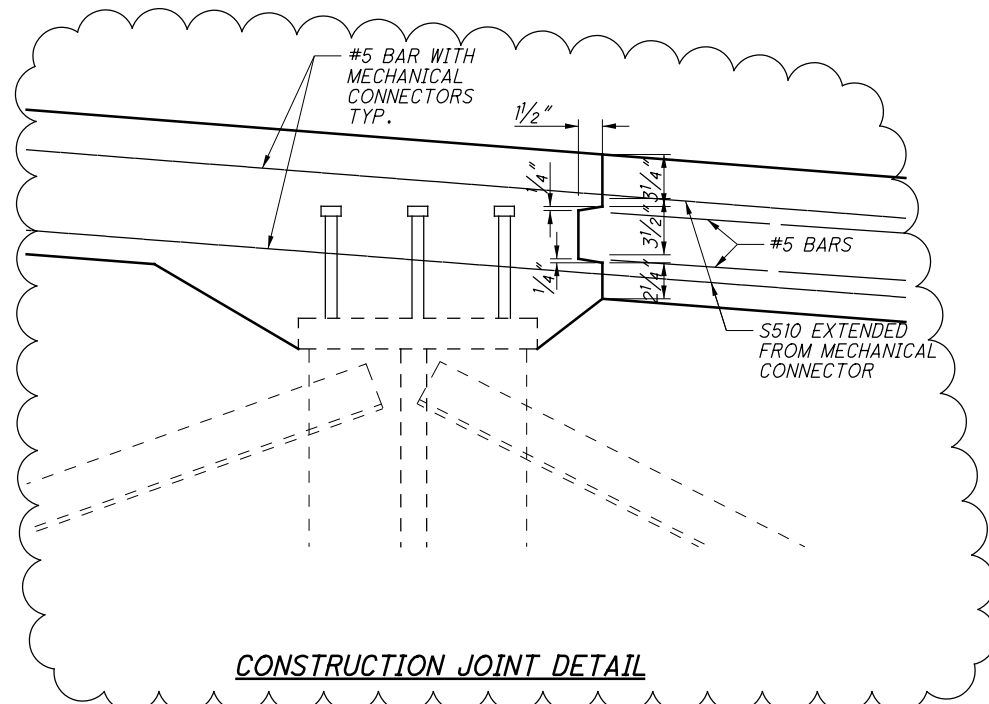
P:\PR54704\HAM\91826\Design\Structures\HAM071_1068L_Sheets\071_1068L_SD001.dgn Sheet 2/26/2018 5:32:14 PM chen



DECK PLAN - LEFT BRIDGE
(RAILING NOT SHOWN)



TYPICAL CONSTRUCTION JOINT PLAN



CONSTRUCTION JOINT DETAIL

REINFORCING LEGEND

- (A) 1 S.O. 49-S503 BOT. 1 S.O. 49-S592 TOP @ 5 3/4" = 23'-0"
- (B) 482-S505 BOT., 482-S590 TOP, 482-S510 TOP, 482-S580 T&B @ 5 3/4" = 230'-5 3/4" (MEASURED ALONG CONSTRUCTION JOINT)
- (C) 1 S.O. 38-S506 T&B @ 5 3/4" = 17'-8 3/4"
- (D) 1 S.O. 51-S507 T&B @ 5 3/4" = 23'-11 1/2"
- (E) 486 S505 BOT., 486-S590 TOP, 486-S510 TOP, 486 S580 T&B @ 5 3/4" (MAX.) = 232'-1" (MEASURED ALONG EDGE OF DECK)
- (F) 1 S.O. 39-S509 BOT., 1 S.O. 39-S593 TOP @ 5 3/4" = 17'-9"
- (G) 138-S501, S511 PAIRS @ 5" (MAX.) TOP OVER PIERS

LEGEND:

BRGS. = BEARINGS
 F.A. = FORWARD ABUTMENT
 R.A. = REAR ABUTMENT
 S.O. = SERIES OF
 SPA. = SPACES
 T&B = TOP AND BOTTOM

NOTES:

1. MINIMUM LAP LENGTHS:
 #4 BAR = 1'-10"
 #5 BAR = 2'-10"
2. FOR DECK LAYOUT INFORMATION SEE GENERAL PLAN ON SHEET 3/57.

REVISED 2-26-2018
 REVISED 2-21-2018

HAM-IR71-8.42
 PID No. 91826

DECK PLAN - LEFT BRIDGE

HAM-71-1068L
 IR-71 OVER STEWART ROAD

DESIGNED SJA
 CHECKED XAC
 DRAWN SJA
 REVISED
 REVIEWED DWL
 DATE 2/20/2017
 STRUCTURE FILE NUMBER 3106888

DESIGN AGENCY
 BURGESS & NIPL
 312 PLUM ST. CINCINNATI, OH

31/57

398
 441

MARK	NUMBER TOTAL	LENGTH	WEIGHT	TYPE	DIMENSIONS						
					A	B	C	D	E	R	INC
SUPERSTRUCTURE REINFORCING STEEL LIST											
S401	207	30'-0"	4148	STR							
S402	138	19'-3"	1775	STR							
S403	69	22'-8"	1045	STR							
S501	914	30'-0"	28599	STR							
S502	70	13'-5"	980	STR							
	1 SR	3'-8"									
* S503	OF 49	TO 28'-7"	824	STR							0'-6"
S504	36	4'-2"	156	STR							
* S505	968 2 SR	28'-6" 3'-7"	28774	STR							
* S506	OF 38 2 SR	TO 28'-3" 1'-6"	1262	STR							0'-8"
* S507	OF 51	TO 28'-0"	1569	STR							0'-6 1/4"
* S508	8 1 SR	3'-3" 3'-8"	27	19	0'-6"	2'-3"	1'-8"				
S509	OF 39	TO 28'-6"	654	STR							0'-8"
S510	1036	9'-7"	10355	16	9'-0"						
S511	276	32'-10"	9452	STR							
* S512	2	11'-4"	24	STR							
* S513	2	11'-10"	25	STR							
* S514	2	7'-8"	16	STR							
* S515	2	7'-10"	16	STR							
S580	2012	3'-0"	6295	STR							
* S590	968 1 SR	29'-1" 4'-3"	29363	16	28'-6"	3'-8"					0'-6"
* S592	OF 49 1 SR	TO 29'-2" 4'-3"	853	16	TO 28'-7" 3'-8"						0'-8"
S593	OF 39	TO 29'-1"	677	16	TO 28'-6"						0'-8"
S597	228	5'-5"	1288	21	1'-2"	0'-10"	1'-0"	0'-10"			
S598	152	2'-1"	330	1	0'-9"	1'-5"					
S599	304	4'-0"	1268	99							
TOTAL			129,775								

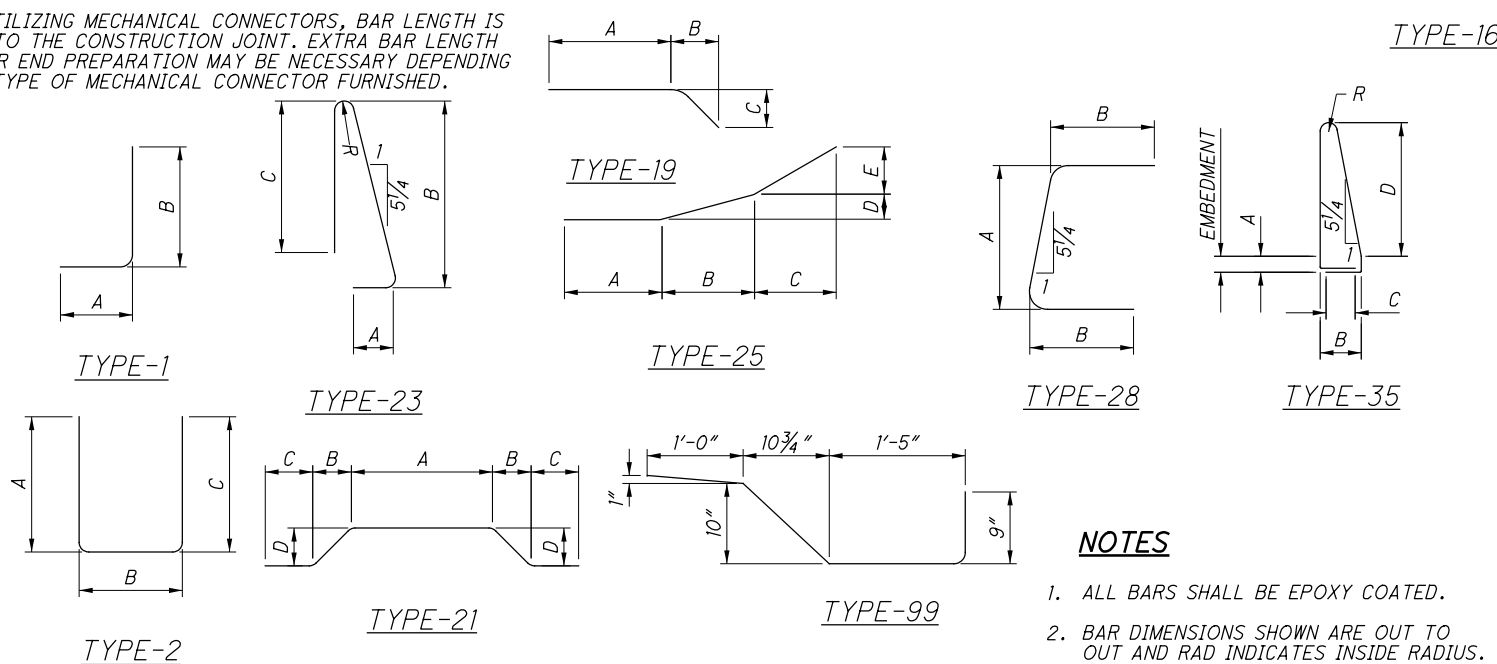


MARK	NUMBER TOTAL	LENGTH	WEIGHT	TYPE	DIMENSIONS						
					A	B	C	D	E	R	INC
PARAPET REINFORCING STEEL LIST											
R501	270	7'-4"	2065	23	0'-11"	3'-3"	3'-0"				0'-3"
R502	273	12'-11"	3678	35	0'-7"	1'-5"	1'-0"	4'-7"			0'-3"
R503	72	30'-0"	2253	STR							
R504	4	6'-8"	28	STR							
R505	NOT USED										
R506	4	1'-10"	8	STR							
R507	NOT USED										
R508	12	14'-8"	184	STR							
R509	120	7'-2"	897	STR							
R510	18	12'-2"	228	STR							
R511	6	11'-9"	74	STR							
R512	4	14'-8"	61	STR							
R513	40	7'-2"	299	STR							
R514	4	14'-6"	60	STR							
R515	2	14'-5"	30	STR							
R516	1	14'-0"	15	STR							
R517	1	13'-6"	14	STR							
R518	1	14'-2"	15	STR							
R519	1	14'-6"	15	STR							
R520	6	14'-6"	91	STR							
R521	6	13'-8"	86	STR							
R522	6	13'-6"	84	STR							
R523	6	14'-2"	89	STR							
R601	270	2'-5"	980	1	1'-0"	1'-7"					
R602	270	3'-1"	1250	28	1'-7"	0'-11"					
R603	2	14'-8"	44	STR							
R604	20	7'-1"	214	STR							
R605	3	12'-2"	55	STR							
R606	1	11'-9"	18	STR							
R607	2	14'-8"	44	STR							
R608	20	7'-2"	215	STR							
R609	2	14'-6"	44	STR							
R610	1	14'-5"	22	STR							
R611	1	13'-8"	21	STR							
R612	1	14'-5"	22	STR							
R613	1	13'-11"	21	STR							
R614	1	14'-0"	21	STR							
TOTAL			13,245								

MARK	NUMBER TOTAL	LENGTH	WEIGHT	TYPE	DIMENSIONS						
					A	B	C	D	E	R	INC
APPROACH SLAB REINFORCING STEEL LIST **											
AS511	42	12'-0"	526	STR							
AS512	42	9'-6"	416	STR							
AS513	178	30'-0"	5570	STR							
AS514	1	23'-8"	25	STR							
AS515	1	24'-3"	25	STR							
AS516	47	7'-6"	368	STR							
AS517	47	5'-3"	257	STR							
AS518	38	24'-0"	951	STR							
AS519	1	24'-2"	25	STR							
AS520	76	13'-3"	1050	STR							
AS1011	47	25'-1"	5072	16	23'-8"						
AS1012	1	23'-8"	102	STR							
AS1013	1	24'-3"	100	STR							
AS1014	1	24'-2"	104	STR							
AS1015	47	25'-5"	5140	16	24'-0"						
AS1016	94	25'-5"	10281	16	24'-0"						

** APPROACH SLAB REINFORCING PAYMENT IS INCLUDED WITH ITEM 526, REINFORCED CONCRETE APPROACH SLAB, AS PER PLAN

* REBAR UTILIZING MECHANICAL CONNECTORS, BAR LENGTH IS MEASURED TO THE CONSTRUCTION JOINT. EXTRA BAR LENGTH AND/OR BAR END PREPARATION MAY BE NECESSARY DEPENDING UPON THE TYPE OF MECHANICAL CONNECTOR FURNISHED.



NOTES

1. ALL BARS SHALL BE EPOXY COATED.
2. BAR DIMENSIONS SHOWN ARE OUT TO OUT AND RAD INDICATES INSIDE RADIUS.

P:\PR54704\HAM\91826\Design\Structures\HAM071_1068L\Sheets\071_1068L_SLO03.dgn Sheet 2/27/2018 9:08:29 AM chen

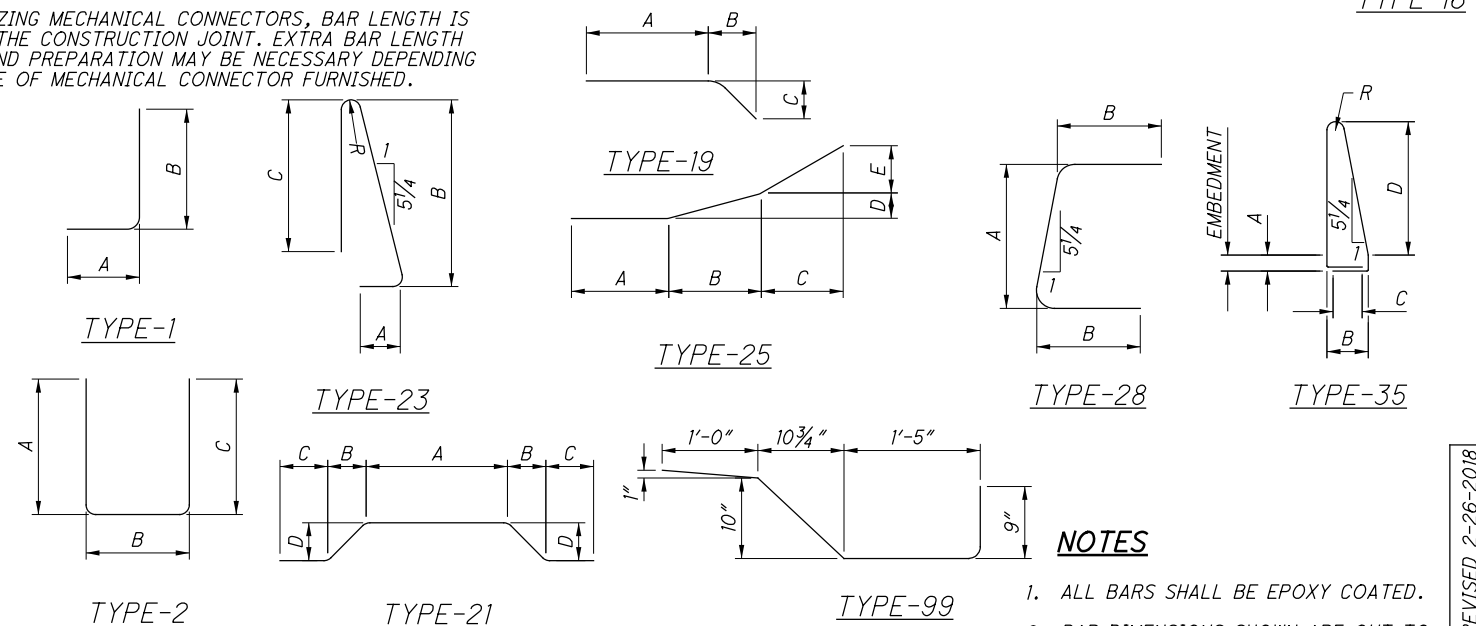
MARK	NUMBER TOTAL	LENGTH	WEIGHT	TYPE	DIMENSIONS						
					A	B	C	D	E	R	INC
SUPERSTRUCTURE REINFORCING STEEL LIST											
S450	336	30'-0"	6733	STR							
S451	224	24'-8"	3691	STR							
S452	112	38'-3"	2862	STR							
S550	1698	30'-0"	53130	STR							
S551	114	12'-8"	1506	STR							
S552	896	36'-0"	33643	STR							
	1 SR	3'-9"									
S553	OF	TO	781	STR							0'-7"
	45	29'-6"									
	2 SR	2'-10"									
S554	OF	TO	673	STR							0'-7"
	29	19'-5"									
S555	866	32'-8"	29506	STR							
	2 SR	2'-10"									
S556	OF	TO	1585	STR							0'-8 1/2"
	43	32'-6"									
	2 SR	4'-4"									
S557	OF	TO	1309	STR							0'-8 1/2"
	37	29'-7"									
S558	18	4'-3"	80	STR							
S559	20	5'-0"	104	STR							
S560	1011	9'-7"	10105	16	9'-0"						
	2 SR	1'-4"									
* S561	OF	TO	1537	STR							0'-6 3/4"
	49	28'-9"									
* S562	962	15'-2"	15218	STR							
	1 SR	3'-9"									
S563	OF	TO	747	STR							0'-8 3/4"
	40	32'-1"									
* S564	4	16'-2"		STR							
S565	2	36'-10"	77	STR							
* S566	1026	3'-0"	3210	STR							
S567	2	20'-11"	44	STR							
S568	481	20'-0"	10034	STR							
S569	481	20'-7"	10326	16	20'-0"						
* S589	10	3'-3"	34	19	0'-6"	2'-3"	1'-8"				
S591	462	30'-7"	14737	16	30'-0"						
	1 SR	4'-4"			3'-9"						
S594	OF	TO	806	16	TO						0'-7"
	45	30'-1"			29'-6"						
	1 SR	4'-4"			3'-9"						
S595	OF	TO	772	16	TO						0'-8 3/4"
	40	32'-8"			32'-1"						
S597	332	5'-5"	1876	21	1'-2"	0'-10"	1'-0"	0'-10"			
S599	83	4'-0"	346	99							
TOTAL			205,472								



MARK	NUMBER TOTAL	LENGTH	WEIGHT	TYPE	DIMENSIONS						
					A	B	C	D	E	R	INC
PARAPET REINFORCING STEEL LIST											
R501	295	7'-4"	2256	23	0'-11"	3'-3"	3'-0"				0'-3"
R502	303	12'-11"	4082	35	0'-7"	1'-5"	1'-0"	4'-7"			0'-3"
R503	76	30'-0"	2378	STR							
R504	NOT USED										
R505	4	5'-2"	22	STR							
R506	NOT USED										
R507	4	26'-5"	110	STR							
R508-R523	NOT USED										
R524	12	14'-8"	184	STR							
R525	132	7'-2"	987	STR							
R526	24	11'-11"	298	STR							
R527	6	11'-7"	72	STR							
R528	4	14'-8"	61	STR							
R529	44	7'-2"	329	STR							
R530	6	13'-2"	82	STR							
R531	2	13'-3"	28	STR							
R532	1	14'-6"	15	STR							
R533	1	14'-0"	15	STR							
R534	1	13'-10"	14	STR							
R534	1	14'-2"	15	STR							
R536	6	14'-0"	88	STR							
R537	6	13'-1"	82	STR							
R538	6	13'-11"	87	STR							
R539	6	14'-7"	91	STR							
R601	295	2'-5"	1071	1	1'-0"	1'-7"					
R602	295	3'-1"	1366	28	1'-7"	0'-11"					
R603-R614	NOT USED										
R615	2	14'-8"	44	STR							
R616	22	7'-2"	237	STR							
R617	4	11'-11"	72	STR							
R618	1	11'-7"	17	STR							
R619	2	14'-8"	44	STR							
R620	22	7'-2"	237	STR							
R621	3	13'-2"	59	STR							
R622	1	13'-3"	20	STR							
R623	1	14'-4"	22	STR							
R624	1	13'-11"	21	STR							
R625	1	13'-9"	21	STR							
R626	1	14'-1"	21	STR							
TOTAL			14,548								

* REBAR UTILIZING MECHANICAL CONNECTORS, BAR LENGTH IS MEASURED TO THE CONSTRUCTION JOINT. EXTRA BAR LENGTH AND/OR BAR END PREPARATION MAY BE NECESSARY DEPENDING UPON THE TYPE OF MECHANICAL CONNECTOR FURNISHED.

MARK	NUMBER TOTAL	LENGTH	WEIGHT	TYPE	DIMENSIONS						
					A	B	C	D	E	R	INC
APPROACH SLAB REINFORCING STEEL LIST *											
AS501	223	30'-0"	6978	STR							
AS502	41	12'-9"	545	STR							
AS503	111	24'-3"	2807	STR							
AS504	41	34'-3"	1465	STR							
AS505	1	24'-8"	26	STR							
AS506	47	12'-8"	621	STR							
AS507	47	20'-6"	1005	STR							
AS508	1	24'-2"	25	STR							
AS509	1	23'-6"	25	STR							
AS1001	125	25'-6"	13716	16	24'-1"						
AS1002	1	13'-0"	56	STR							
AS1003	1	26'-1"	112	16	24'-8"						
AS1004	1	24'-6"	105	STR							
AS1005	1	24'-2"	104	STR							
AS1006	1	23'-10"	103	STR							
AS1007	1	23'-6"	101	STR							
AS1008	153	25'-4"	16678	16	23'-11"						



NOTES

- ALL BARS SHALL BE EPOXY COATED.
- BAR DIMENSIONS SHOWN ARE OUT TO OUT AND RAD INDICATES INSIDE RADIUS.

** APPROACH SLAB REINFORCING PAYMENT IS INCLUDED WITH ITEM 526, REINFORCED CONCRETE APPROACH SLAB, AS PER PLAN

REVISED 2-26-2018
REVISED 2-21-2018

REINFORCING STEEL LIST 3

HAM-IR71-8.42
PID No. 91826

DESIGNED BY: SJA
CHECKED BY: XAC

DRAWN BY: SJA
REVISED BY:

REVIEWED BY: DWL
DATE: 2/20/2017
STRUCTURE FILE NUMBER: 3106896

DESIGN AGENCY:
BURGESS & NIPL
312 PLUM ST. CINCINNATI, OH

56/57
423
441

P:\PR54704\HAM\91826\Design\Roadway\Sheets\91826_GG003.dgn Sheet 2/22/2018 3:30:58 PM sbell

SHEET NUM.						PART.			ITEM	ITEM	GRAND	UNIT	DESCRIPTION	SEE
321	323	324				01/IMS/PV	02/IMS/B R	03/	EXT	TOTAL				SHEET
													LIGHTING	
									625	00450	32	EACH	CONNECTION, FUSED PULL APART	
									625	00460	16	EACH	CONNECTION, UNFUSED PULL APART	
									625	00480	51	EACH	CONNECTION, UNFUSED PERMANENT	
									625	10490	10	EACH	LIGHT POLE, CONVENTIONAL	
									625	13400	2	EACH	LIGHT TOWER, BBBB100	
									625	14000	4	EACH	LIGHT POLE FOUNDATION, 24" X 6' DEEP	
									625	15200	2	EACH	LIGHT TOWER FOUNDATION, 36" X 25' DEEP	
									625	14200	6	EACH	LIGHT POLE FOUNDATION, 24" X 10' DEEP	
									625	18100	7	EACH	BRACKET ARM, 12'	
									625	18200	2	EACH	BRACKET ARM, 15'	
									625	18300	2	EACH	BRACKET ARM, 18'	
									625	18400	2	EACH	BRACKET ARM, 20'	
									625	23200	2,742	FT	NO. 4 AWG 2400 VOLT DISTRIBUTION CABLE	
									625	23300	2,640	FT	NO. 2 AWG 2400 VOLT DISTRIBUTION CABLE	
									625	23400	1,368	FT	NO. 10 AWG POLE AND BRACKET CABLE	
									625	25402	1,094	FT	CONDUIT, 2", 725.05	
									625	25910	588	FT	CONDUIT CLEANED AND CABLES REMOVED	
									625	26251	13	EACH	LUMINAIRE, CONVENTIONAL, AS PER PLAN	321
									625	26260	12	EACH	LUMINAIRE, HIGH MAST	
									625	29000	1,047	FT	TRENCH	
									625	30700	9	EACH	PULL BOX, 725.08, 18"	
									625	32000	15	EACH	GROUND ROD	
									625	36000	1,047	FT	PLASTIC CAUTION TAPE	
	2								SPECIAL	62540010	2	EACH	REPLACEMENT OF EXISTING LIGHTING UNIT	321
									625	75350	2	EACH	LIGHT TOWER REMOVED	
									625	75400	7	EACH	LIGHT POLE REMOVED	
									625	75500	4	EACH	LIGHT POLE FOUNDATION REMOVED	
									625	75506	22	EACH	LUMINAIRE REMOVED	
									625	75540	2	EACH	LIGHT TOWER FOUNDATION REMOVED	
									625	75550	857	FT	DISTRIBUTION CABLE REMOVED	
									625	75801	19	EACH	DISCONNECT CIRCUIT, AS PER PLAN	321
													TRAFFIC CONTROL	
													SEE SHEETS 234-235	

CALCULATED
JLG
CHECKED
KSC

GENERAL SUMMARY

HAM - IR 71 - 8.42

159
441

P:\PR54704\HAM\91826\Design\Lighting\Sheets\91826_L5001.dgn Sheet 2/22/2018 3:33:52 PM sbell

REF NO.	SHEET NO.	STATION TO STATION				625	625	625	625	625	625	625	625	625	625	625	625	625	625	625			
						CONNECTION, FUSED PULL APART EACH	CONNECTION, UNFUSED PULL APART EACH	CONNECTION, UNFUSED PERMANENT EACH	LIGHT POLE, CONVENTIONAL EACH	LIGHT TOWER, BBBBBB100 EACH	LIGHT POLE FOUNDATION, 24" X 6' DEEP EACH	LIGHT TOWER FOUNDATION, 36" X 25' DEEP EACH	LIGHT POLE FOUNDATION, 24" X 10' DEEP EACH	BRACKET ARM, 12' EACH	BRACKET ARM, 15' EACH	BRACKET ARM, 18' EACH	BRACKET ARM, 20' EACH	NO. 2 AWG 2400 VOLT DISTRIBUTION CABLE FT	NO. 4 AWG 2400 VOLT DISTRIBUTION CABLE FT	NO. 10 AWG POLE AND BRACKET CABLE FT	CONDUIT CLEANED AND CABLES REMOVED FT	CONDUIT, 2", 725.05 FT	
1	326	407+69.00	RT			2	1			1		1											
2	326	407+78.90	RT					3															
3	326	407+90.00	RT																				
4	326	410+88.00	RT																				
5	326	412+00.00	RT					3															
6	326	412+17.89	RT			2	1			1		1											
7	326	412+08.00	RT																				
8	327	479+24.75	LT					3															
9	327	473+23.00	LT					3															
10	328	541+30.00	RT			2	1		1			1						162					
11	328	541+38.00	RT																				
12	328	544+59.00	RT			2	1		1			1						162					
13	328	544+46.00	RT																				
14	328	547+65.00	RT			2	1		1			2						162					
15	328	547+74.00	RT																				
16	328	548+50.00	RT					3															
17	329	579+00.00	RT			2	1		1			1	1					126					
18	329	579+39.00	RT					3															
19				NOT USED																			
20	329	581+15.00	RT					3															
21	329	581+60.00	RT			2	1		1			1	1					126					
22	330	629+90.00	LT			2	1		1			1	1					126					
23	330	629+90.00	RT			2	1		1			1	1					126					
24	330	630+37.00	LT																				
25	330	631+60.00	LT			2	1		1			1	1					126					
26	330	631+63.00	RT			2	1		1			1	1					126					
27	330	631+78.00	RT																				
28	326	410+45.00	RT					3															
29	326	412+24.00	RT					3															
30	328	540+30.00	RT					3															
31	329	582+08.00	LT			2	1		1			1	1					126					
32				NOT USED																			
33	330	628+40.00	LT					3															
34	326	407+78.9	RT	TO	407+90	RT											63			11			
35	326	412+00	RT	TO	412+17.89	RT											54			8			
36	328	540+30.00	RT	TO	541+30.00												327			105			
37	328	541+30.00	RT	TO	544+46.00	RT											1002			330			
38	328	544+46.00	RT	TO	547+65.00	RT											927			305			
39	328	547+65.00	RT	TO	548+50.00	RT											267			85			
40	329	582+08.00	LT	TO	582+51.00	LT			3									150		46			
41	329	577+58	RT	TO	579+00	RT	2	1										450		140			
42	329	579+00	RT	TO	579+19	RT			3									57		19			
43	329	581+42	RT	TO	581+60	RT			3									81		18			
44	329	581+60	RT	TO	582+63	RT	2	1										327		100			
45	330	626+88	LT	TO	628+40	LT												465		146			
46	330	628+40	LT	TO	628+97	LT	2	1										189		55			
47	330	628+40	LT	TO	629+90	LT												462					
48	330	631+60	LT	TO	631+76	LT			3									57		15			
49	330	631+76	LT	TO	632+75	LT	2	1										315		95			
50	330	629+90	RT	TO	630+16	RT			3									102					
51	330	631+63	RT	TO	631+84	RT			3									87					
TOTALS CARRIED TO GENERAL SUMMARY						32	16	51	10		2	4	2	6	7	2	2	2	2640	2742	1368	588	1094

CALCULATED
 STB
 CHECKED
 SCS

LIGHTING SUBSUMMARY

HAM - IR71 - 8.42

REVISED 02/22/2018

323
441

P:\PR54704\HAM-91826\Design\Lighting\Sheets\91826_L_S002.dgn Sheet 2/22/2018 2:47:42 PM sbell

REF NO.	SHEET NO.	STATION TO STATION		625		625		625		625		625		625		625		625		625						
				LUMINAIRE, CONVENTIONAL, AS PER PLAN	LUMINAIRE, HIGH MAST	TRENCH	PULL BOX, 725.08, 18"	GROUND ROD	PLASTIC CAUTION TAPE	LIGHT TOWER REMOVED	LIGHT POLE REMOVED	LIGHT POLE FOUNDATION REMOVED	LUMINAIRE REMOVED	LIGHT TOWER FOUNDATION REMOVED	DISCONNECT CIRCUIT, AS PER PLAN	DISTRIBUTION CABLE REMOVED										
				EACH	EACH	FT	EACH	EACH	FT	EACH	EACH	EACH	EACH	EACH	EACH	EACH	EACH	FT								
1	326	407+69.00	RT									1				6	1	1								
2	326	407+78.90	RT				6				2															
3	326	407+90.00	RT						1																	
4	326	410+88.00	RT						1																	
5	326	412+00.00	RT						1																	
6	326	412+17.89	RT								2															
7	326	412+08.00	RT									1				6	1	1								
8	327	479+24.75	LT						1																	
9	327	473+23.00	LT						1																	
10	328	541+30.00	RT	TO	544+59.00	RT					1															
11	328	541+38.00	RT										1	1	2		1									
12	328	544+59.00	RT					2			1															
13	328	544+46.00	RT										1	1	2		1									
14	328	547+65.00	RT					2			1															
15	328	547+74.00	RT										1	1	2		1									
16	328	548+50.00	RT							1										1						
17	329	579+00.00	RT					1			1									1						
18	329	579+39.00	RT										1		1		1			1						
19					NOT USED																					
20	329	581+15.00	RT											1		1				1						
21	329	581+60.00	RT					1			1									1						
22	330	629+90.00	LT					1			1									1						
23	330	629+90.00	RT	TO	630+16.00	RT		1			1									1						
24	330	630+37.00	LT											1		1				1						
25	330	631+60.00	LT	TO	631+76.00	LT					1									1						
26	330	631+63.00	RT	TO	631+84.00	RT					1									1						
27	330	631+78.00	RT											1	1	1				1						
28	326	410+45.00	RT						1																	
29	326	412+24.00	RT						1																	
30	328	540+30.00	RT						1	1										1						
31	329	582+08.00	LT					1			1									1						
32					NOT USED																					
33	330	628+40.00	LT							1										1						
34	326	407+78.9	RT	TO	407+90	RT															15					
35	326	412+00	RT	TO	412+17.89	RT															17					
36	328	540+30.00	RT	TO	541+30.00	RT				100											105					
37	328	541+30.00	RT	TO	544+46.00	RT				320											330					
38	328	544+46.00	RT	TO	547+65.00	RT				295											305					
39	328	547+65.00	RT	TO	548+50.00	RT				80											85					
40	329	582+08.00	LT	TO	582+51.00	LT				41																
41	329	577+58	RT	TO	579+00	RT																				
42	329	579+00	RT	TO	579+19	RT																				
43	329	581+42	RT	TO	581+60	RT																				
44	329	581+60	RT	TO	582+63	RT																				
45	330	626+88	LT	TO	628+40	LT																				
46	330	628+40	LT	TO	628+97	LT																				
47	330	628+40	LT	TO	629+90	LT				144																
48	330	631+60	LT	TO	631+76	LT																				
49	330	631+76	LT	TO	632+75	LT																				
50	330	629+90	RT	TO	630+16	RT				25										25						
51	330	631+63	RT	TO	631+84	RT				20										20						
TOTALS CARRIED TO GENERAL SUMMARY							13		12	1047		9		15	1047		2		7		4	22		2	19	857

CALCULATED	STB	CHECKED	SCS
LIGHTING SUBSUMMARY			
HAM - IR71 - 8.42			
324 441			

REVISED 02/22/2018



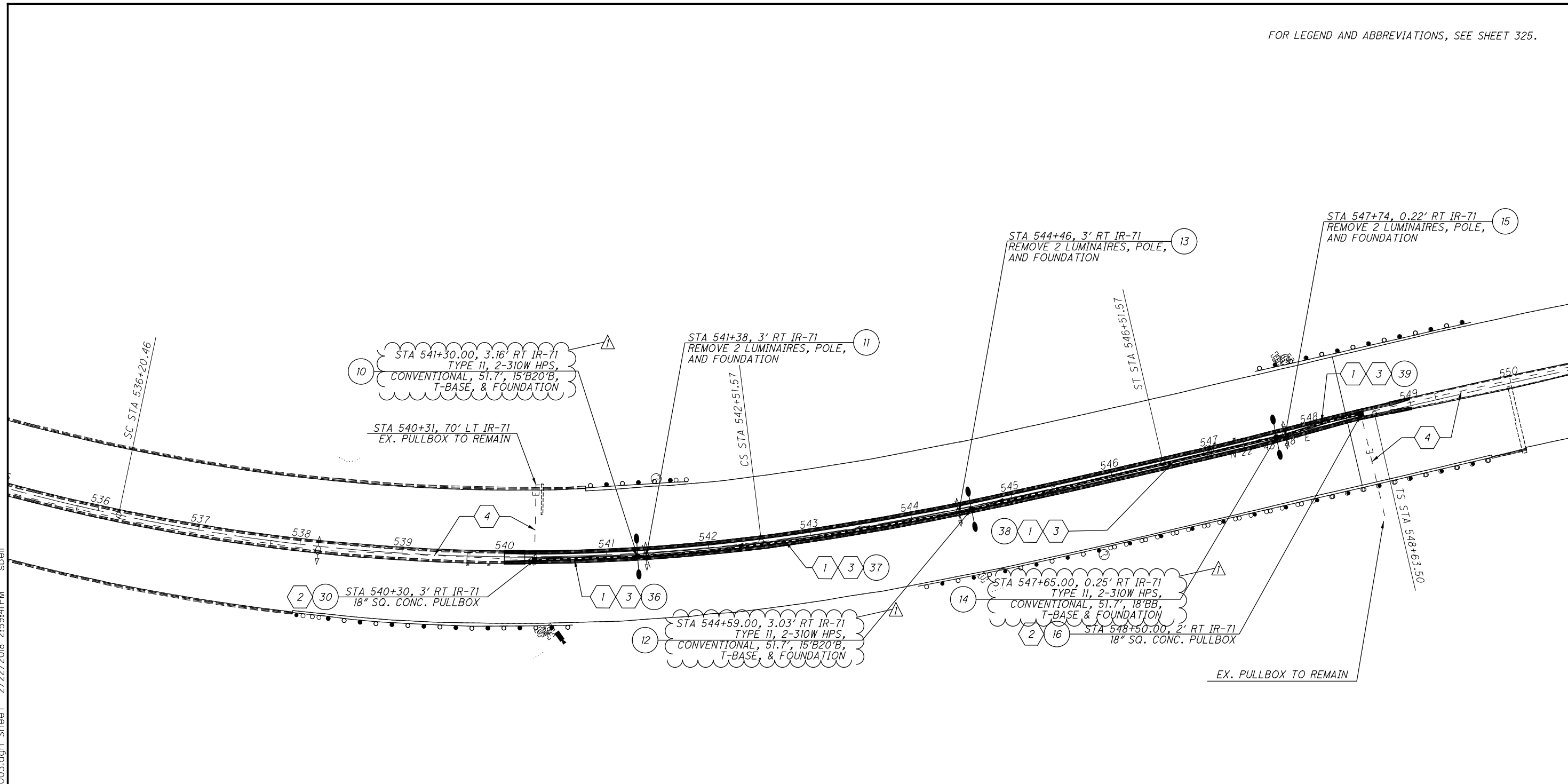
CALCULATED SDC
CHECKED SCS

**LIGHTING PLAN - IR-71 NORTH CROSSOVER
FOR MOT, STA 540+00 TO STA 549+00**

HAM-IR71-8.42

REVISED 01/23/2018

328
441



- CODED NOTES:**
- 1 2" CONDUIT WITH THREE NO. 2 AWG 2400 VOLT DISTRIBUTION CABLES
 - 2 REMOVE EXISTING PULL BOX
 - 3 EXISTING DUCT CABLE AND CONDUCTORS TO BE REMOVED
 - 4 EXISTING DUCT CABLE AND CONDUCTORS TO REMAIN
 - 5 2" CONDUIT WITH THREE NO. 4 AWG 2400 VOLT DISTRIBUTION CABLES
 - 6 REMOVE EXISTING CONDUCTORS, CLEAN CONDUIT AND PROVIDE THREE NO. 4 AWG 2400 VOLT DISTRIBUTION CABLES

P:\PR54704\HAM_91826\Design\Lighting\Sheets\91826_LP003.dgn Sheet 2/22/2018 2:59:41PM sbell

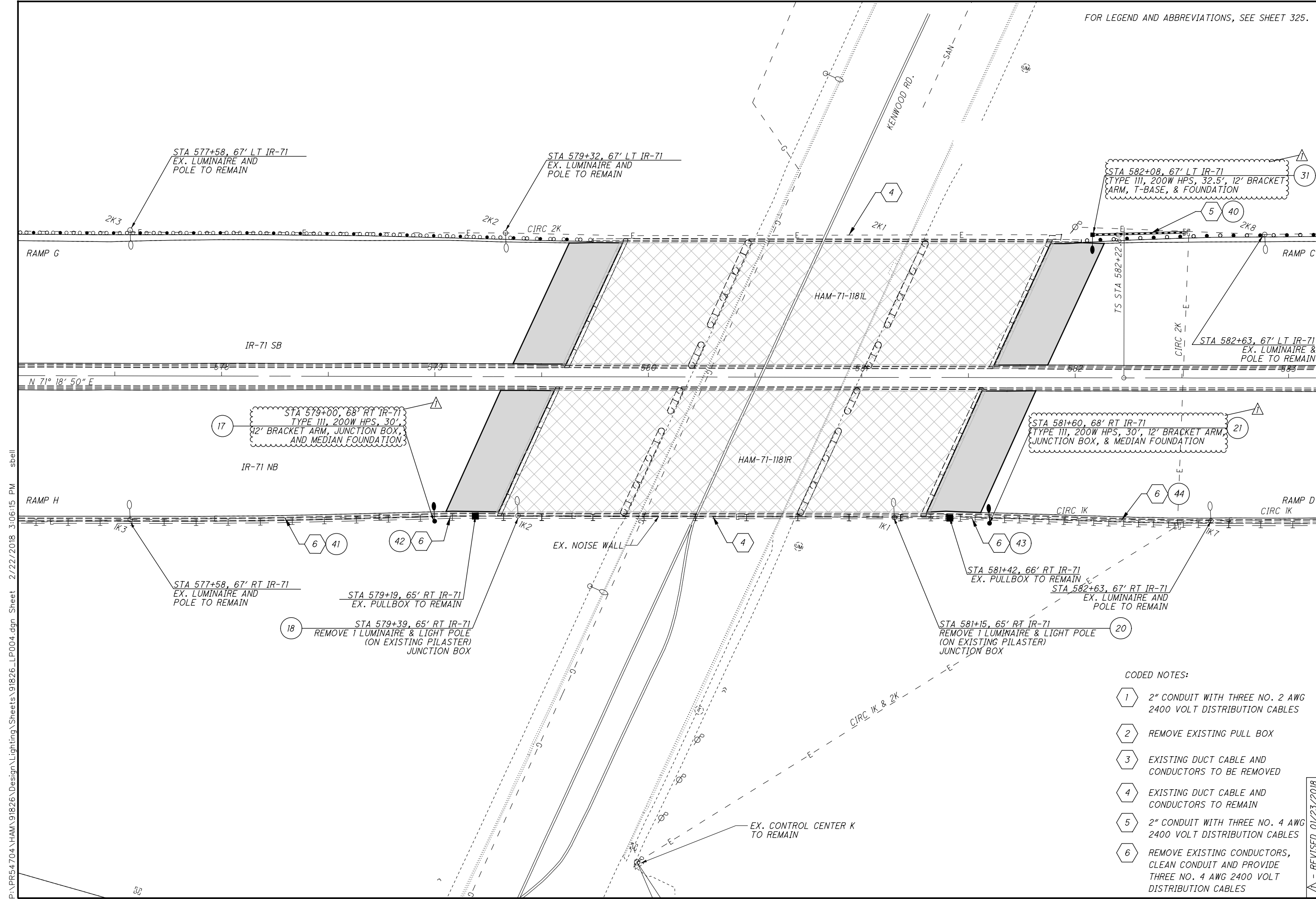


CALCULATED SDC CHECKED SCS

LIGHTING PLAN - IR-71
KENWOOD ROAD HAM-71-1181L / R

HAM-IR71-8.42

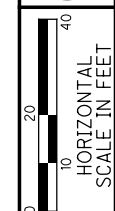
329
441



- CODED NOTES:**
- 1 2" CONDUIT WITH THREE NO. 2 AWG 2400 VOLT DISTRIBUTION CABLES
 - 2 REMOVE EXISTING PULL BOX
 - 3 EXISTING DUCT CABLE AND CONDUCTORS TO BE REMOVED
 - 4 EXISTING DUCT CABLE AND CONDUCTORS TO REMAIN
 - 5 2" CONDUIT WITH THREE NO. 4 AWG 2400 VOLT DISTRIBUTION CABLES
 - 6 REMOVE EXISTING CONDUCTORS, CLEAN CONDUIT AND PROVIDE THREE NO. 4 AWG 2400 VOLT DISTRIBUTION CABLES

P:\PR54704\HAM\91826\Design\Lighting\Sheets\91826_LP004.dgn Sheet 2/22/2018 3:06:15 PM sbell

REVISED 01/23/2018

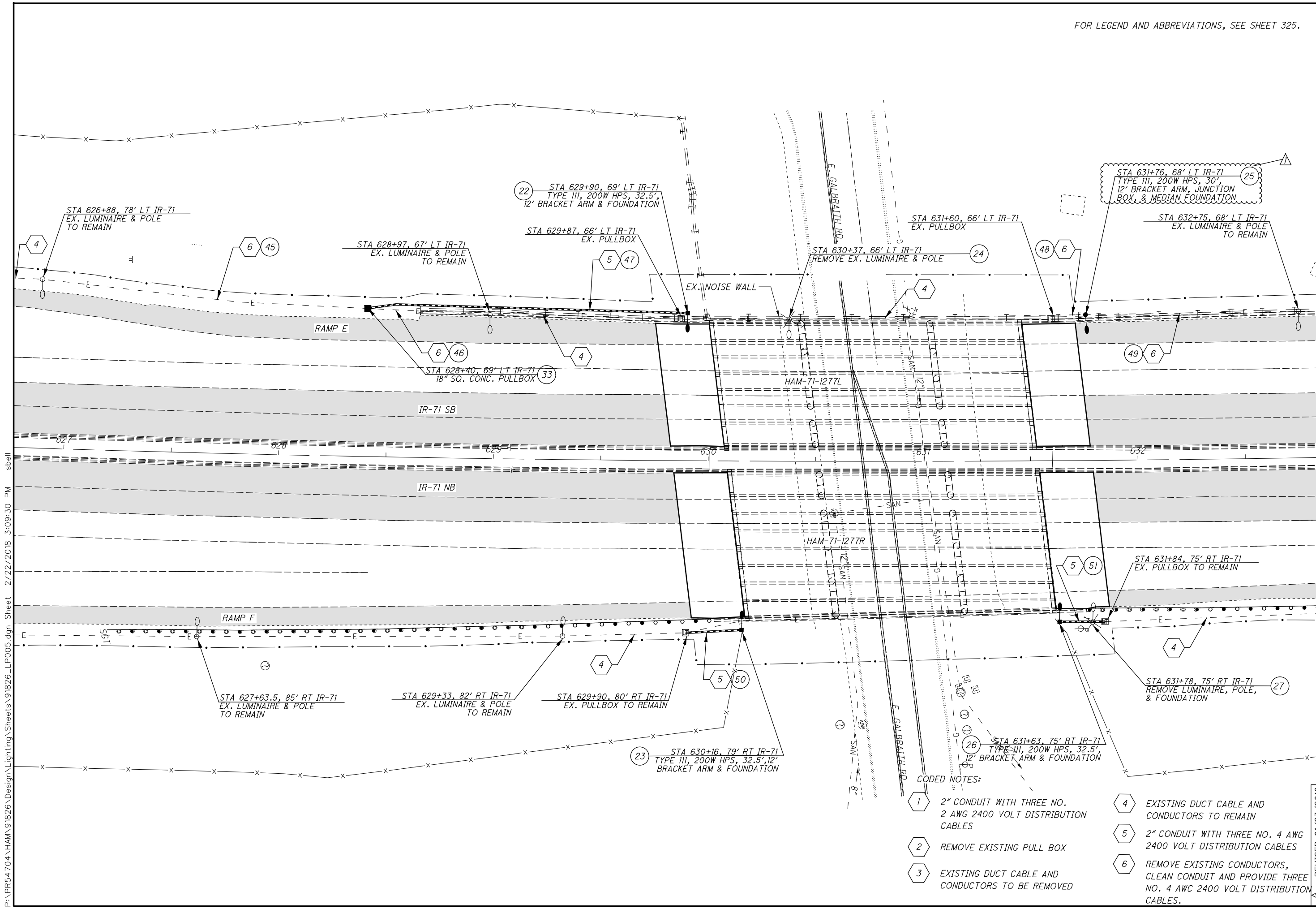


CALCULATED SDC CHECKED SCS

LIGHTING PLAN - IR-71
GALBRAITH ROAD AND HAM-71-1277R/L

HAM-IR71-8.42

330
441



CODED NOTES:

- 1 2" CONDUIT WITH THREE NO. 2 AWG 2400 VOLT DISTRIBUTION CABLES
- 2 REMOVE EXISTING PULL BOX
- 3 EXISTING DUCT CABLE AND CONDUCTORS TO BE REMOVED
- 4 EXISTING DUCT CABLE AND CONDUCTORS TO REMAIN
- 5 2" CONDUIT WITH THREE NO. 4 AWG 2400 VOLT DISTRIBUTION CABLES
- 6 REMOVE EXISTING CONDUCTORS, CLEAN CONDUIT AND PROVIDE THREE NO. 4 AWG 2400 VOLT DISTRIBUTION CABLES.

P:\PR54704\HAM\91826\Design\Lighting\Sheets\91826_LP005.dgn Sheet 2/22/2018 3:09:30 PM sbell

REVISED 01/23/2018