

O:\ODOT_D1\10115395A.00 - 101193_HAN-698-4.73 - 576\101193_Design\Roadway\Sheets\101193_GG001.dgn 10/28/2020 9:51:32 AM smitchell

SHEET NUM.											PART.	ITEM	ITEM	GRAND	UNIT	DESCRIPTION	SEE
6	11	12	18	24							01/BRF/BR	EXT	TOTAL			SHEET NO.	
											LS	201	11000	LS			
															ROADWAY		
											LS	201	11000	LS	CLEARING AND GRUBBING		
											1,494	202	23010	1,494	SY	PAVEMENT REMOVED, ASPHALT	
											958	202	38000	958	FT	GUARDRAIL REMOVED	
3											3	202	53101	3	EACH	MAILBOX REMOVED, AS PER PLAN	6
											129	203	10000	354	CY	EXCAVATION	
											76	203	20000	364	CY	EMBANKMENT	
											1,958	204	10000	1,958	SY	SUBGRADE COMPACTION	
1											1	204	45000	1	HOUR	PROOF ROLLING	
											950	606	15101	950	FT	GUARDRAIL, TYPE MGS WITH LONG POSTS, AS PER PLAN	6
											4	606	20050	4	EACH	ROUNDED END SECTION	
											6	606	26150	6	EACH	ANCHOR ASSEMBLY, MGS TYPE E (MASH 2016)	
											4	606	26500	4	EACH	ANCHOR ASSEMBLY, TYPE T	
											8	606	35001	8	EACH	BRIDGE TERMINAL ASSEMBLY, TYPE 1, AS PER PLAN	6
											38	626	00102	38	EACH	BARRIER REFLECTOR, TYPE 1, BI-DIRECTIONAL	
																EROSION CONTROL	
											179	601	32100	179	CY	ROCK CHANNEL PROTECTION, TYPE B WITH FILTER	
											2	659	00100	2	EACH	SOIL ANALYSIS TEST	
2											147	659	00300	147	CY	TOPSOIL	
147											1,364	659	10000	1,364	SY	SEEDING AND MULCHING	
1,364											68	659	14000	68	SY	REPAIR SEEDING AND MULCHING	
68											68	659	15000	68	SY	INTER-SEEDING	
68											0.2	659	20000	0.2	TON	COMMERCIAL FERTILIZER	
0.2											0.3	659	31000	0.3	ACRE	LIME	
0.3											7	659	35000	7	MGAL	WATER	
7											15,000	832	30000	15,000	EACH	EROSION CONTROL	
																DRAINAGE	
											486	605	31100	486	FT	AGGREGATE DRAINS	
																PAVEMENT	
											321	302	46000	321	CY	ASPHALT CONCRETE BASE, PG64-22	
											406	304	20000	406	CY	AGGREGATE BASE	
											103	407	10000	103	GAL	TACK COAT	
											67	441	50000	67	CY	ASPHALT CONCRETE SURFACE COURSE, TYPE 1, (448), PG64-22	
											37	441	50000	37	CY	ASPHALT CONCRETE SURFACE COURSE, TYPE 1, (448), PG64-22, SAFETY EDGE	
											90	441	50300	90	CY	ASPHALT CONCRETE INTERMEDIATE COURSE, TYPE 2, (448)	
																TRAFFIC CONTROL	
											44	630	03100	44	FT	GROUND MOUNTED SUPPORT, NO. 3 POST	
											4	630	85100	4	EACH	REMOVAL OF GROUND MOUNTED SIGN AND REERECTION	
											4	630	86002	4	EACH	REMOVAL OF GROUND MOUNTED POST SUPPORT AND DISPOSAL	
											0.32	642	00104	0.32	MILE	EDGE LINE, 6", TYPE 1	
											0.16	642	00300	0.16	MILE	CENTER LINE, TYPE 1	
																STRUCTURE OVER 20 FOOT SPAN	
																STRUCTURE HAN-698-4.73 ESTIMATED QUANTITIES	30
																STRUCTURE HAN-698-5.76 ESTIMATED QUANTITIES	48
																INCIDENTALS	
											LS	614	11000	LS		MAINTAINING TRAFFIC	
											LS	614	12420	LS		DETOUR SIGNING	
											6	619	16010	6	MNTH	FIELD OFFICE, TYPE B	
											LS	623	10000	LS		CONSTRUCTION LAYOUT STAKES AND SURVEYING	
											LS	624	10000	LS		MOBILIZATION	

GENERAL SUMMARY

HAN-698-4.73/5.76

o:\000T_D1\10115395A.00 - 101193_HAN-698-473_576\101193_Design\Roadway\Sheets\101193_GS002.dgn 10/28/2020 9:51:34 AM smitchell

REF NO.	SHEET NO.	STATION TO STATION		SIDE	LENGTH	AVERAGE WIDTH	CADD AREA	302	304	407	441	441	441	630	630	630	642	642		
								CY ASPHALT CONCRETE BASE, PG64-22		CY AGGREGATE BASE		GAL TACK COAT		CY ASPHALT CONCRETE SURFACE COURSE, TYPE 1, (448), PG64-22	CY ASPHALT CONCRETE SURFACE COURSE, TYPE 1, (448), PG64-22, SAFETY EDGE	CY ASPHALT CONCRETE INTERMEDIATE COURSE, TYPE 2, (448)		GROUND MOUNTED SUPPORT, NO. 3 POST	REMOVAL OF GROUND MOUNTED SIGN AND REERECTION	REMOVAL OF GROUND MOUNTED POST SUPPORT AND DISPOSAL
			TO																	
P1	13	247+50.00		249+12.37	RT/LT	162.37	29.27													
P1A	13	249+12.37		249+37.37	RT/LT	25.00	30.00	93	99	30	19	11	26							
P2	13	250+36.19		251+50.51	RT/LT	114.32	29.11	65	69	21	13	8	18							
P2A	13	250+11.19		250+36.19	RT/LT	25.00	30.00		16											
EL1	26	247+50.00		251+50.51	LT	400.51														
EL2	26	247+50.00		251+50.51	RT	400.51														0.08
CL1	26	247+50.00		251+50.51	CT	400.51														0.08
P3	20	89+50.00		91+04.35	RT/LT	154.35	28.61	86	92	27	18	10	24							
P3A	20	91+04.35		91+29.35	RT/LT	25.00	30.00		16											
P4	20	92+47.65		93+75.00	RT/LT	127.35	28.53	71	76	23	15	8	20							
P4A	20	92+22.66		92+47.66	RT/LT	25.00	30.00		16											
P5	20	92+80.36			RT		289.40	6	6	2	2	2								
EL3	27	89+50.00		93+75.00	LT	425.00														0.08
EL4	27	89+50.00		93+75.00	RT	425.00														0.08
CL2	27	89+50.00		93+75.00	CT	425.00														0.08
S1	26	249+32.80			RT									22	2	2				
S2	26	250+14.40			LT									22	2	2				
S3	27	91+15.60			RT															
S4	27	92+37.79			LT															
TOTALS CARRIED TO GENERAL SUMMARY								321	406	103	67	37	90	44	4	4	0.32	0.16		

ESTIMATED QUANTITIES	CALCULATED CEL CHECKED JRW		
HAN-698-4.73 / 5.76			
<table border="1" style="margin: auto;"> <tr> <td style="padding: 2px;">12</td> </tr> <tr> <td style="padding: 2px;">68</td> </tr> </table>		12	68
12			
68			

CURVE NO. 2
 PI STA. 245+65.61
 $\Delta = 35^\circ 24' 47''$ (LT)
 $D_c = 13^\circ 03' 58''$
 $R = 438.51'$
 $T = 140.00'$
 $L = 271.03'$
 $E = 21.81'$
 $C = 266.74'$
 $C.B. = N 1^\circ 27' 54'' E$

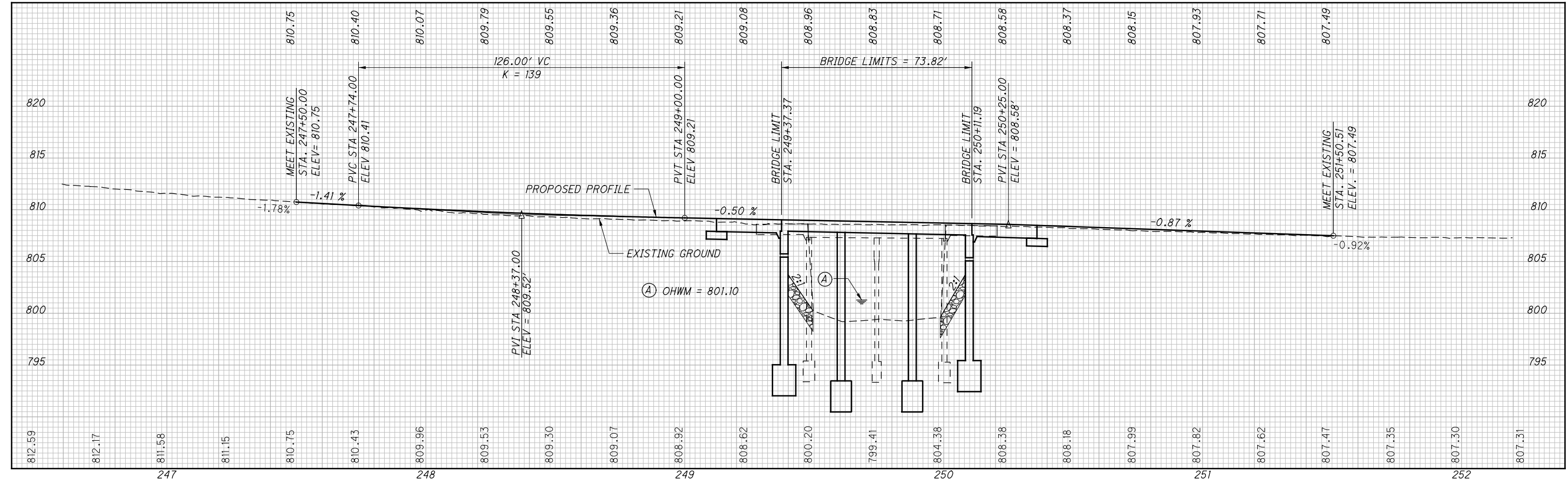
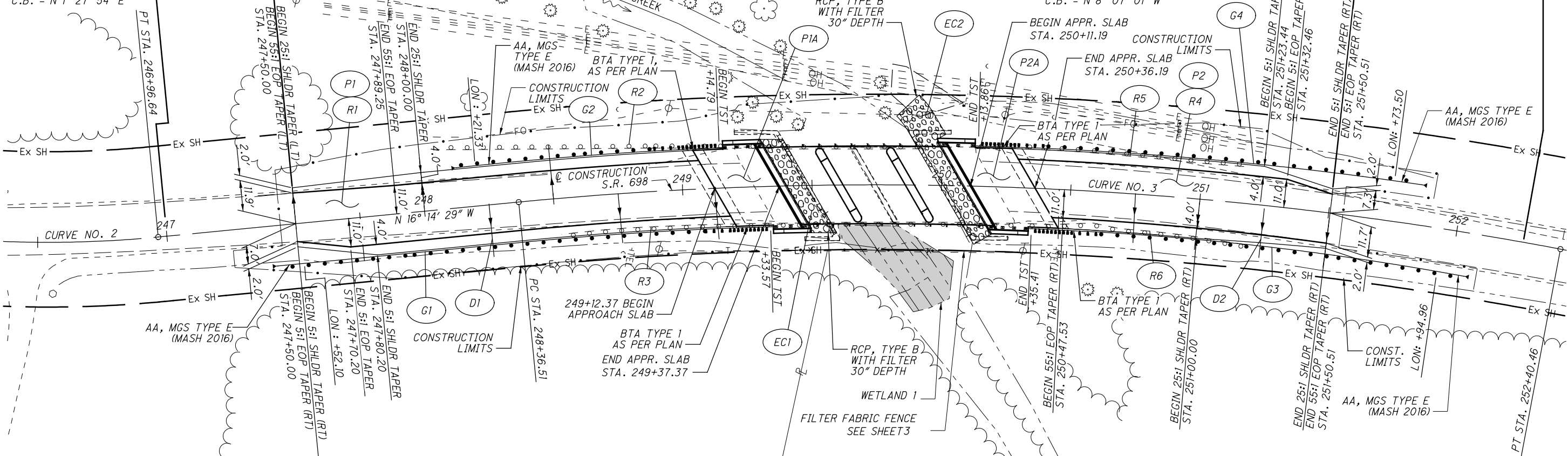
CURVE NO. 3
 PI STA. 250+39.85
 $\Delta = 16^\circ 14' 34''$ (RT)
 $D_c = 4^\circ 01' 15''$
 $R = 1,424.93'$
 $T = 203.34'$
 $L = 403.95'$
 $E = 14.44'$
 $C = 402.60'$
 $C.B. = N 8^\circ 07' 01'' W$

BEGIN WORK
 STA. 247+00.00

BEGIN PROJECT
 STA. 247+50.00
 SLM 4.69

SUSPEND PROJECT
 STA. 251+50.51
 SLM 4.77

SUSPEND WORK
 STA. 252+26.00



CALCULATED
 CEL
 CHECKED
 JRW

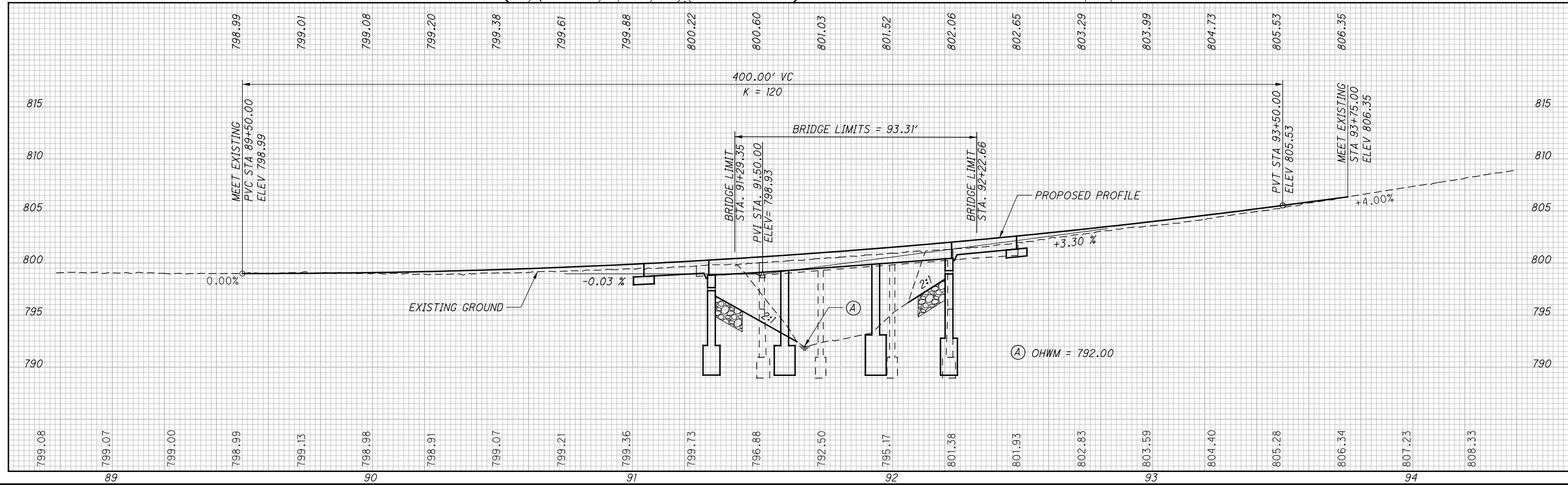
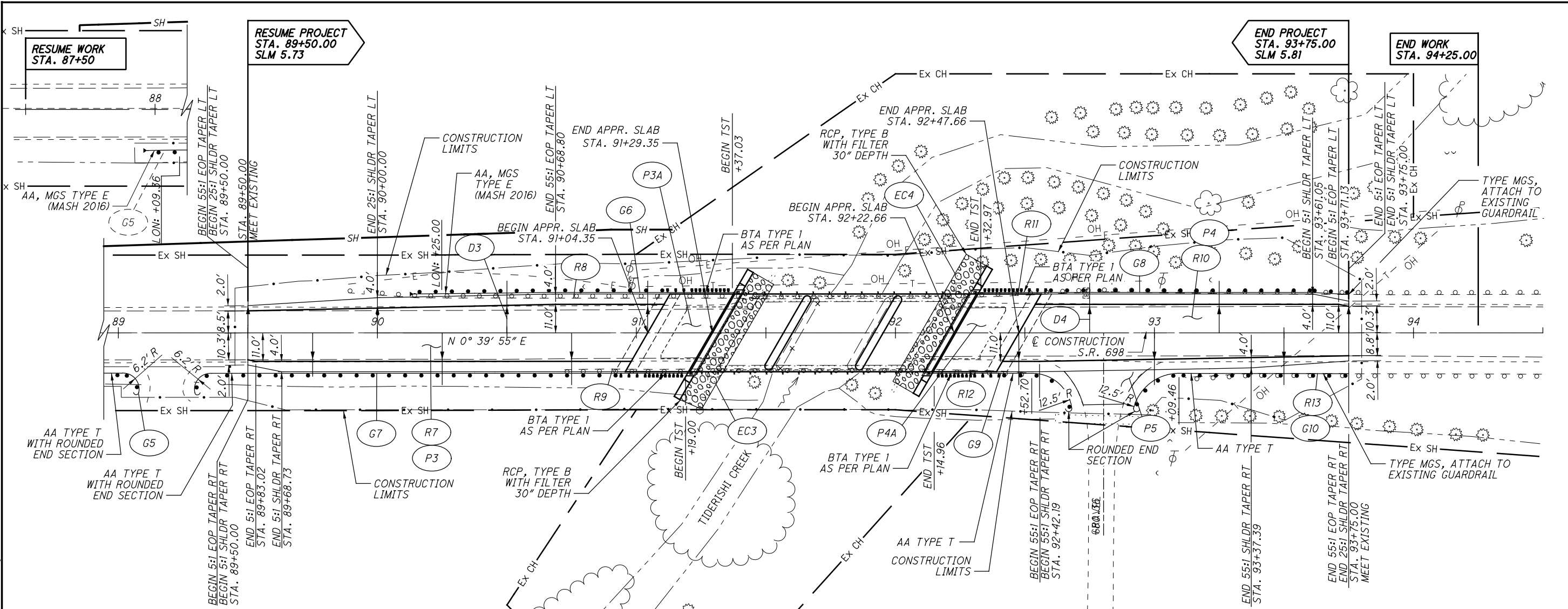
PLAN AND PROFILE
 STA. 246+50 TO STA. 252+40.46

HAN-698-4.73/5.76

13
 68

O:\ODOT_D1\10115395A.00 - 101193_HAN-698-4.73_5.76\101193_Design\Roadway\Sheets\101193_GP001.dgn 10/28/2020 9:51:46 AM smitchell

o:\ODOT_D\10115395A.00 - 101193_HAN-698-4.73_5.76\101193_Design\Roadway\Sheets\101193_GP002.dgn 10/28/2020 9:51:58 AM smitchell



CALCULATED
CEL
CHECKED
JRW

PLAN AND PROFILE
STA. 89+00.00 TO STA. 94+25.00

HAN-698-4.73/5.76