



Columbus Southern Power/Ohio Power Company  
Poles Affected List

Transmission     Distribution

County <b>Hancock</b>	Route <b>Han-75-14.39</b>	Section <b>Lima Ave</b>
--------------------------	------------------------------	----------------------------

Status of Existing Poles Affected by Highway Project

Plant Facilities on Public Right-of-Way	No.	Plant Facilities on Private Right-of-Way
41840549B20039 ✓	2	41840549B2 0038 ✓ * (F)
215 ✓	3	41 ✓ (P)
41840548D40156 ✓	4	96 ✓ (P)
42 ✓	5	
	6	80 (P) ✓
	7	50 (F)
	8	135 (P)
44 ✓	9	
107 ✓	10	
45 ✓	11	
	12	* 46 (F) ✓
	13	46 A (P) ✓
	14	95 (P) ✓
49 ✓	15	
56 ✓	16	
69 ✓	17	
53 ✓	18	
	19	* 22 (F) ✓
108 ✓	20	

Total Affected Poles on Public Right-of-Way 12  
Company Participation 52.17 %  
Round Percentage to Nearest Hundredth

Total Affected Poles on Private Right-of-Way 11  
Governmental Participation 47.83 %  
Round Percentage to Nearest Hundredth

Note Below Any Circumstances Which May Affect This Project:

(P) = Private Right of Way  
(F) = City of Findlay Right of Way

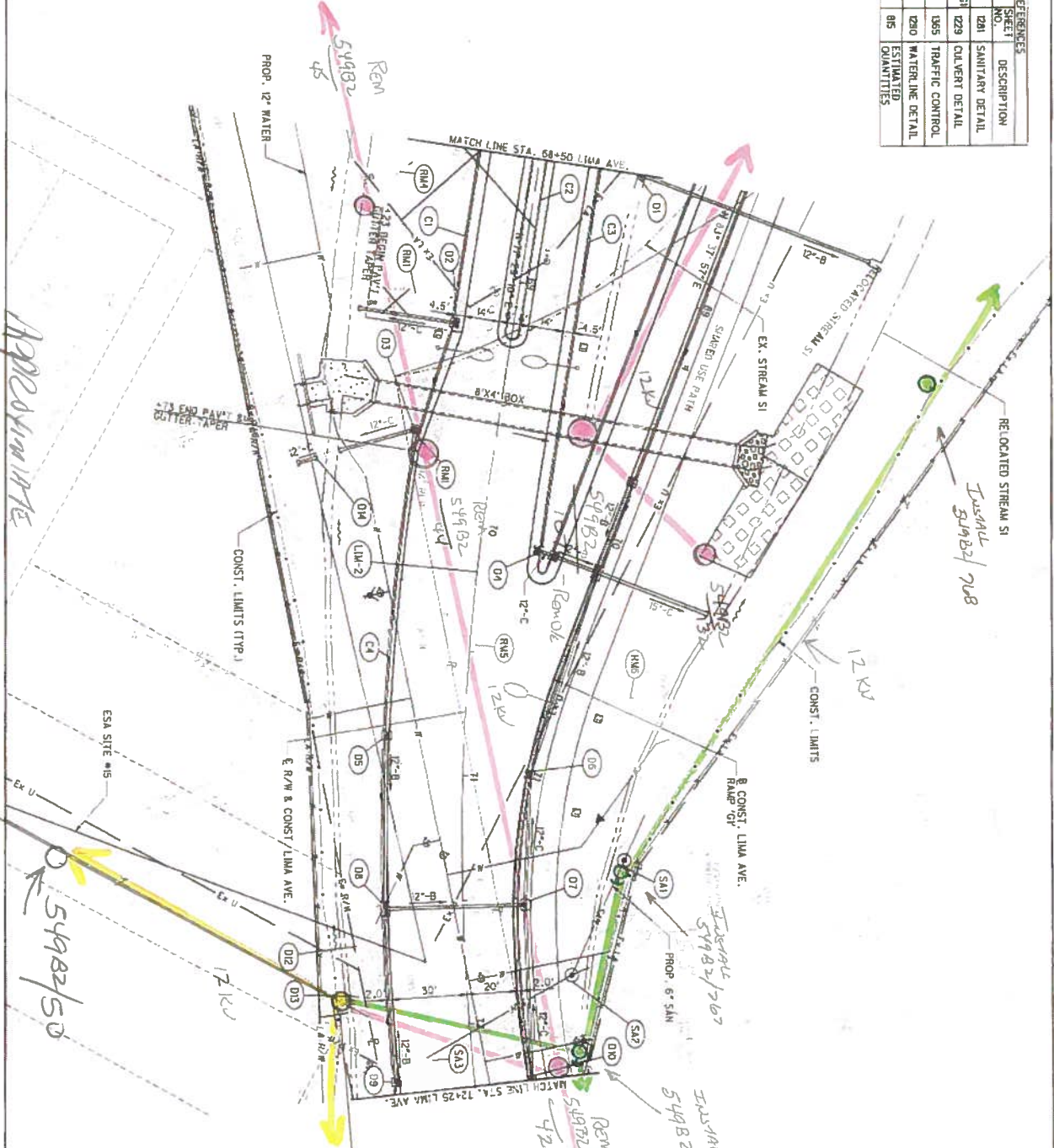
\* Indicates Stub Pole Not Counted In Poles Affected Quantities.

Region Engineering or General Office Engineering

By \_\_\_\_\_ Date \_\_\_\_\_

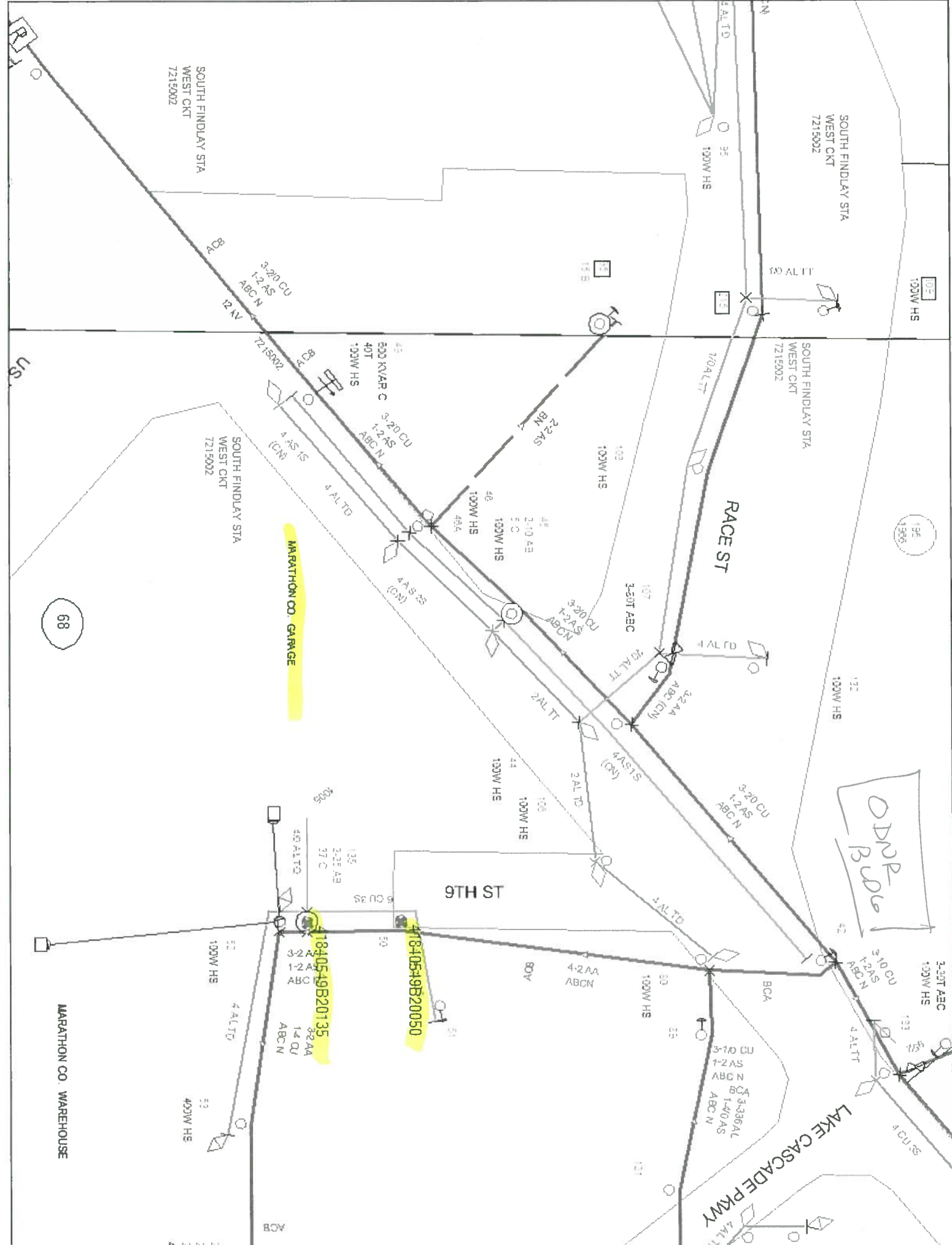
CROSS REFERENCES	
SHEET NO.	DESCRIPTION
1201	SANITARY DETAIL
1229	COLVERT DETAIL
1355	TRAFFIC CONTROL
1230	WATERLINE DETAIL
815	ESTIMATED QUANTITIES

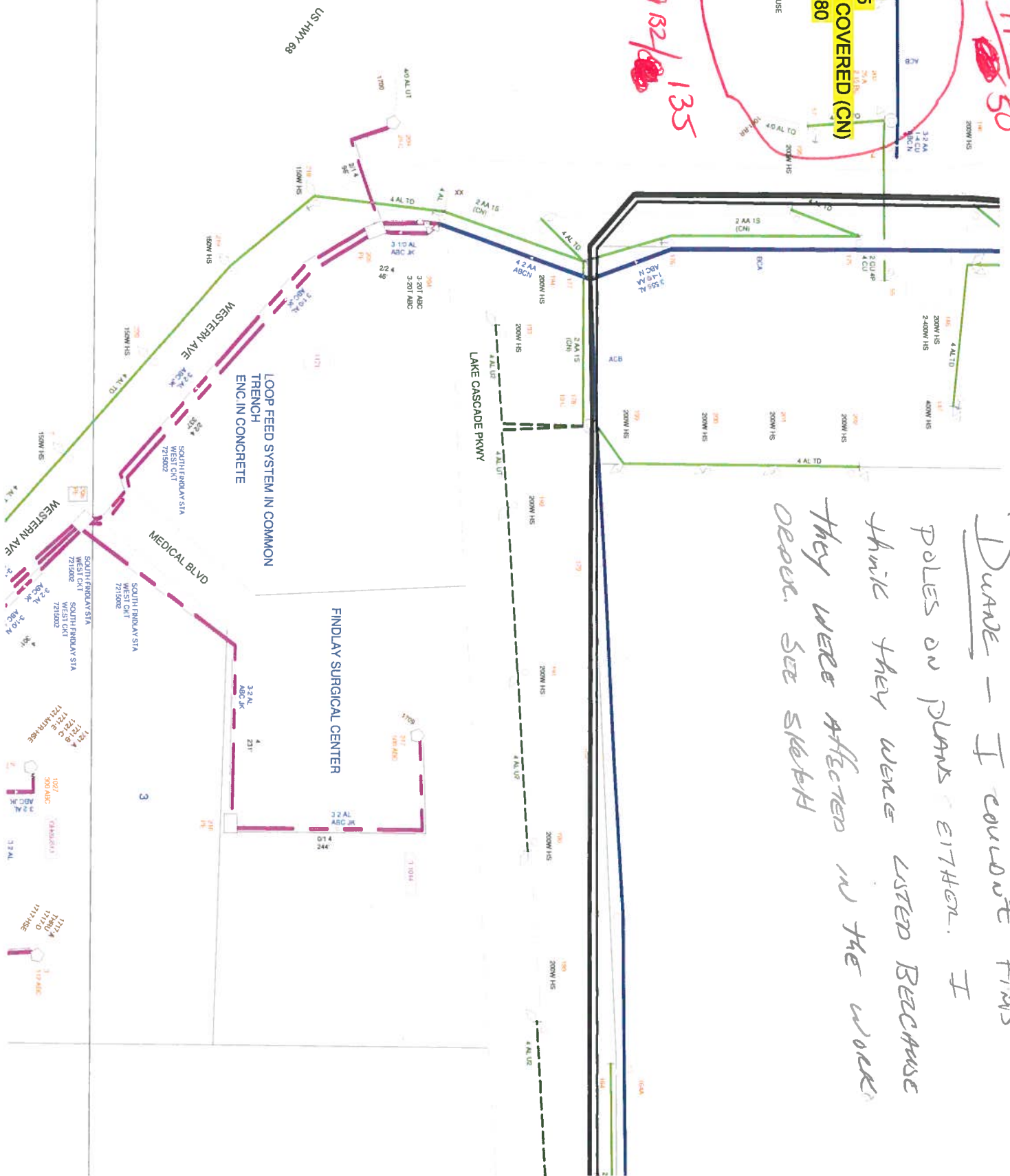
LEGEND  
 DEP MAT  
 TYPE A



*APPROXIMATE  
 LOCATIONS  
 IF THEY WERE  
 STUDIED*

DRIVE LIM-2  
 P.I. STA. 71+47.83  
 A = 20° 16' 11" (LTI)  
 Δc = 6° 00' 00"  
 R = 954.83'  
 T = 170.70'  
 L = 337.83'  
 E = 151.14'  
 C = 336.07'  
 C.B. = N 61° 27' 04" E  
 Q1 = NC



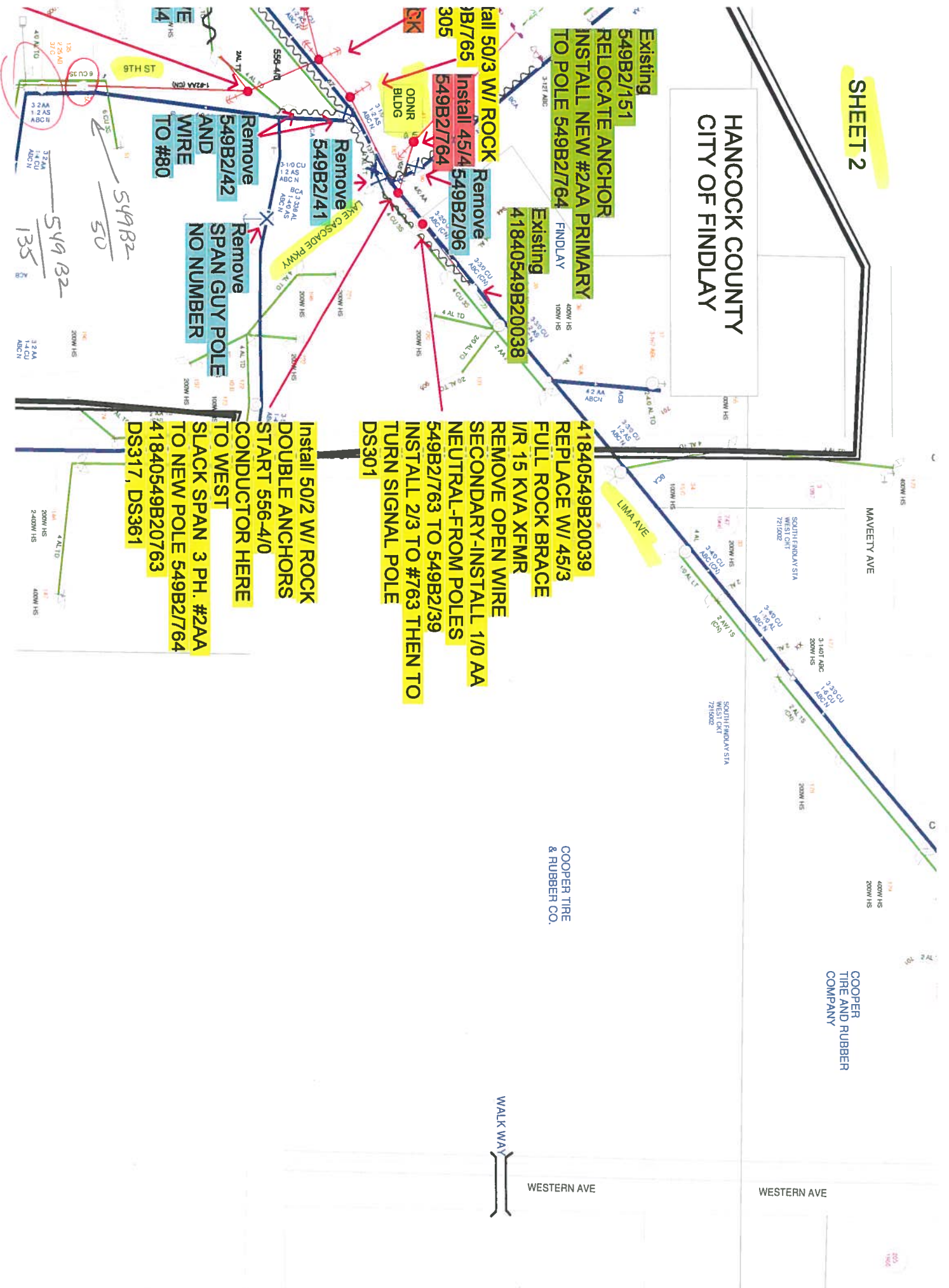


549B2/135  
50  
Pole

Duane - I couldn't find poles on plans either. I think they were listed because they were affected in the work order. See sketch

**SHEET 2**

**HANCOCK COUNTY  
CITY OF FINDLAY**



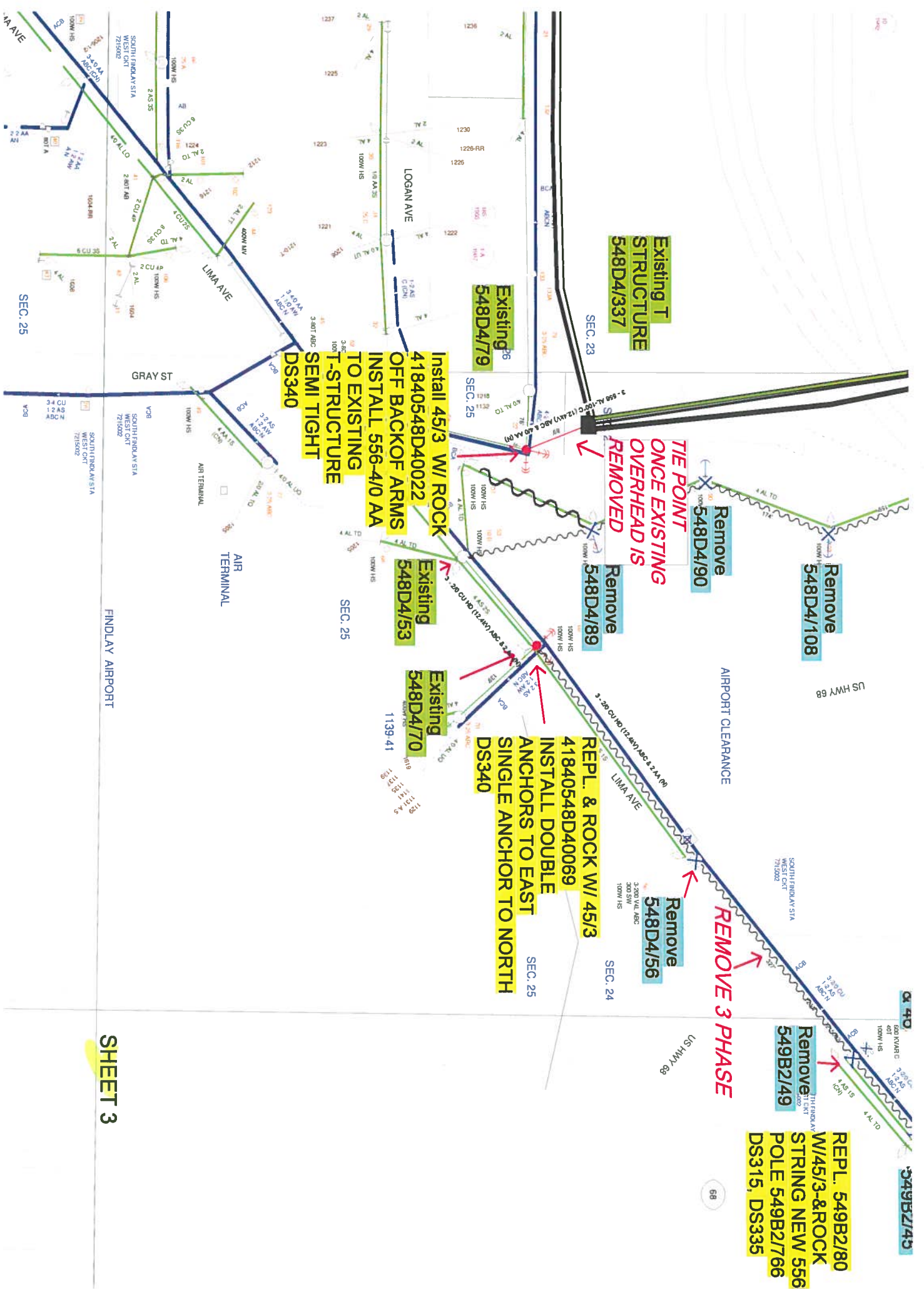
COOPER TIRE & RUBBER CO.

COOPER TIRE AND RUBBER COMPANY

WALK WAY

WESTERN AVE

WESTERN AVE



**SHEET 3**

**INSTALL 7 NEW POLES  
REPL. 5 POLES  
INSTALL 1200 FT. OF 556-4/0 AA  
FOR I-75 PUBLIC PROJECT**

**SOUTH FINDLAY STA  
WEST CKT  
7215002**

**RUSH  
TRUCKING**

**REPL. 548D4/156  
W/ 45/2-REPL. UG RISER  
INSTALL 556/4-0 AA  
SEMI TIGHT OFF BACK OF  
POLE TO NEW  
T STRUCTURE  
548D4/334  
DS315**

**MAPS 41840549B2  
548D4**

**Install 50/3-ROCK  
549B2/766  
4 ANCHORS-  
556-4/0 ACROSS ROAD  
TO POLE 549B2/80**

**Install 45/3 W/ ROCK  
549B2/768  
DS301**

**Install 45/3 W/ R  
549B2/767  
2 ANCHORS  
DS340, DS361**

**NEW OVERHEAD  
TIE POINT ON  
TRANSMISSION  
STRUCTURE  
FOR REROUTING  
AROUND ST. RT 15**

**T-STRUCTURE  
41840548D4/334**

**Remove  
548D4/158**

**Remove  
548D4/194**

**Remove  
548D4/92**

**Remove  
548D4/93**

**Install 45/3  
ROCK BRACE  
548D4/338  
DS305**

**SOUTH FINDLAY STA  
WEST CKT  
7215002**

**Remove  
549B2/109**

**Remove  
549B2/215**

**Remove  
4549B2/95**

**Remove  
549B2/46A  
& 46**

**Remove  
549B2/45**

**REPL. 549B2/80**

