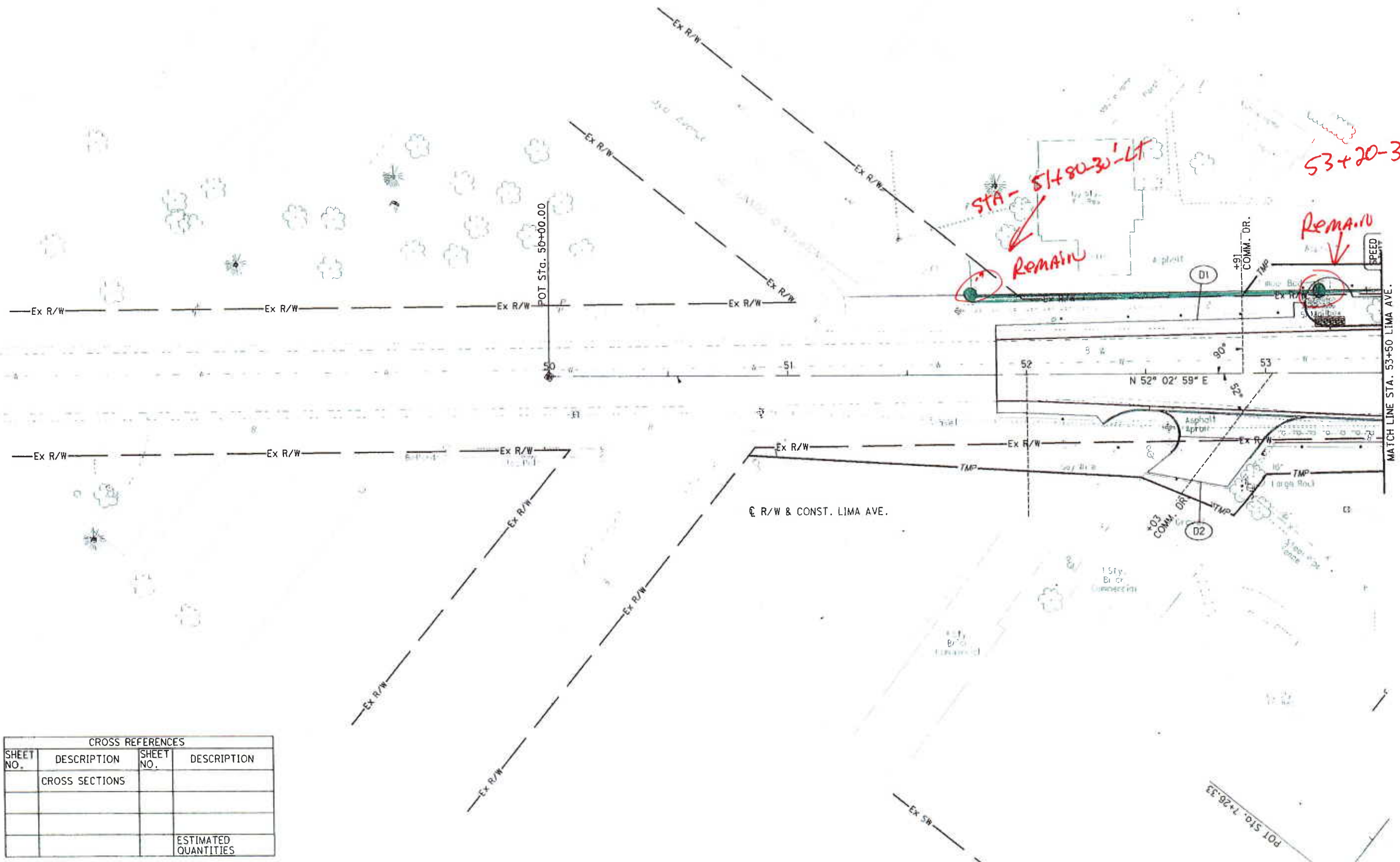


Green - Existing



HORIZONTAL SCALE IN FEET



STA - 51+80-30' - LT
Remain

53+20-30' - LT
Remain

PLAN - LIMA AVE.
BEGIN WORK TO STA. 53+50

HAN-75-14.39

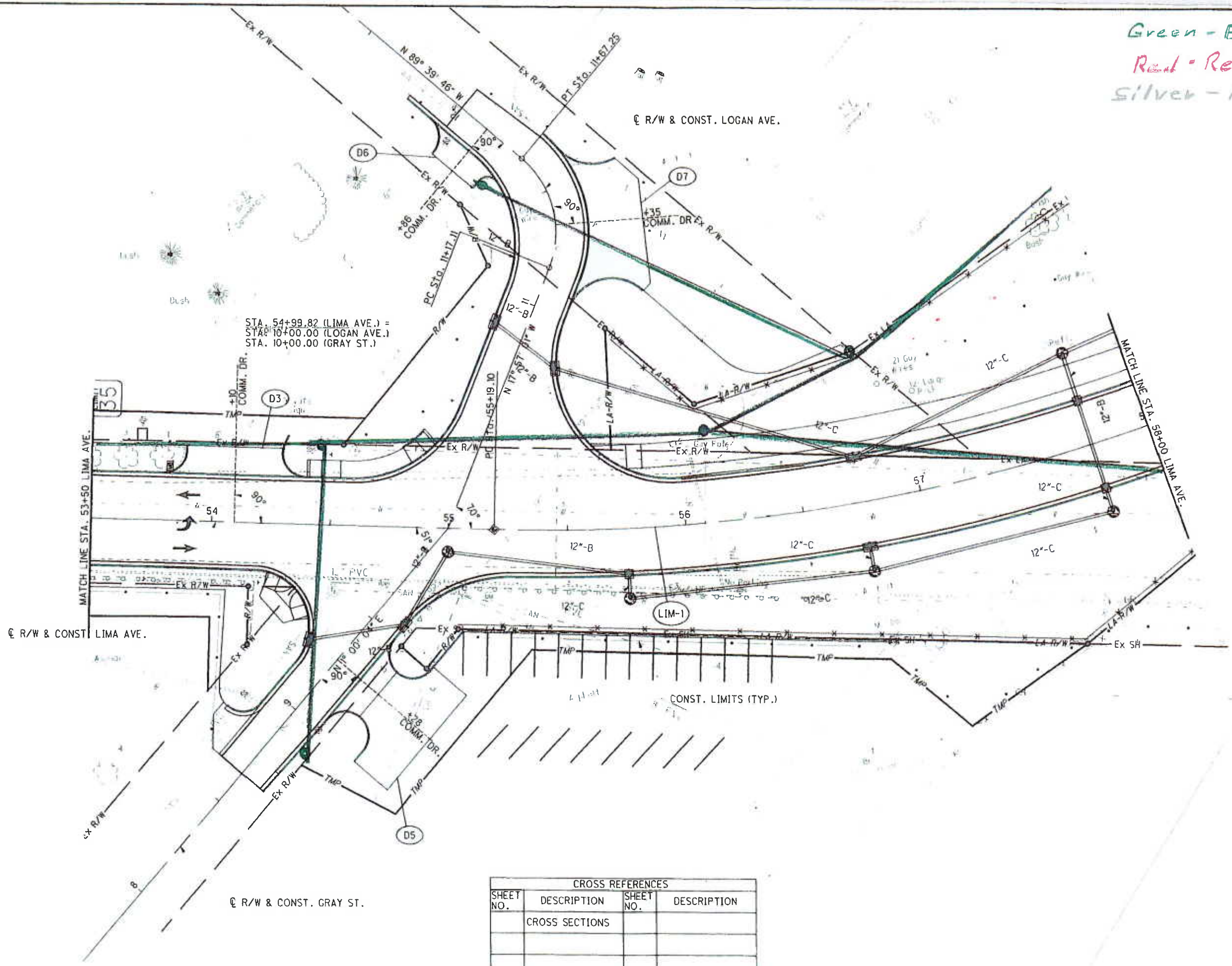
394
842

CROSS REFERENCES			
SHEET NO.	DESCRIPTION	SHEET NO.	DESCRIPTION
	CROSS SECTIONS		
			ESTIMATED QUANTITIES

Green - Existing
 Red - Removal
 Silver - New



HORIZONTAL
 SCALE IN FEET



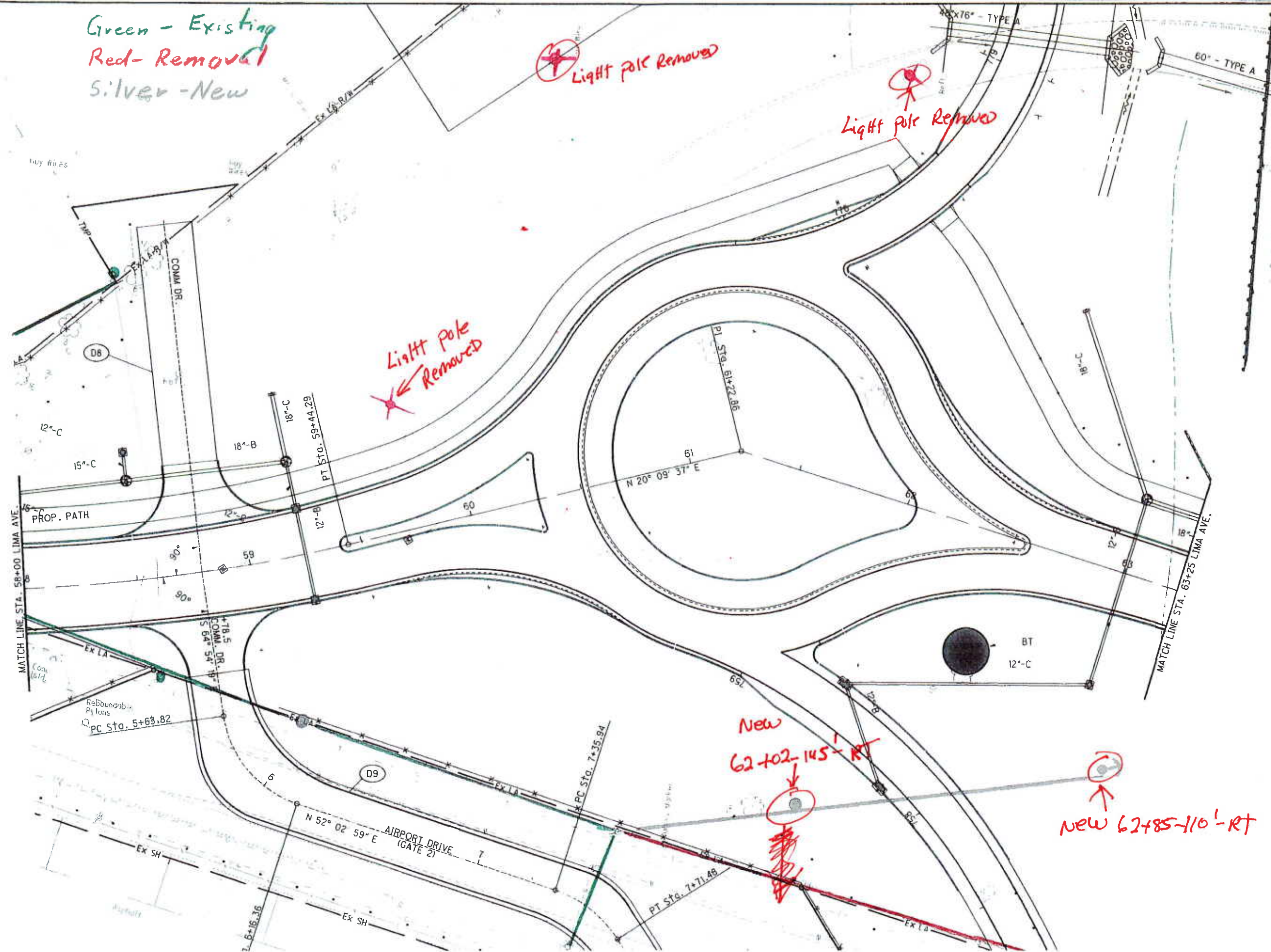
STA. 54+99.82 (LIMA AVE.) =
 STA. 10+00.00 (LOGAN AVE.)
 STA. 10+00.00 (GRAY ST.)

CROSS REFERENCES			
SHEET NO.	DESCRIPTION	SHEET NO.	DESCRIPTION
	CROSS SECTIONS		
			ESTIMATED QUANTITIES

PLAN - LIMA AVE.
 STA. 53+50 TO STA. 58+00

HAN-75-14.39

Green - Existing
Red - Removal
Silver - New



Light Pole Removed

Light Pole Removed

Light Pole Removed

New
62+02-145' RT

New
62+85-110' RT



HORIZONTAL
SCALE IN FEET

PLAN - LIMA AVE.
STA. 58+00 TO STA. 63+25

HAN-75-14.39

398
842

Green - Existing
 Red - Removal
 Silver - New

PROP. R/W & CONST. U.S. 68/S.R. 15

CONST. LIMA AVE. RAMP 'G'

STRUCTURE NO.
 HAN-68-1585

PROP. PATH 'C'

R/W & CONST. LIMA AVE.

CONST. LIMA AVE. RAMP 'B'

CONST. LIMA AVE.
 RAMP 'G1'



PLAN - LIMA AVE.
 STA. 63+25 TO STA. 68+50

HAN-75-14.39

400
 842

MATCH LINE STA. 63+25 LIMA AVE.

MATCH LINE STA. 68+50 LIMA AVE.

CROSS REFERENCES			
SHEET NO.	DESCRIPTION	SHEET NO.	DESCRIPTION
	CROSS SECTIONS		
			ESTIMATED QUANTITIES

UNDER GROUND

Removed

65+45-175-PT-PT

UNDER GROUND STARTS

New
 67+25-85'-RT

Light pole
 Removal

Light pole
 Removal

PL Sta. 66+48.97

Ditch

RELOCATED STREAM 'S1'

STREAM 'S1'

Occupied
 by
 structure

Ex LA

Ex LA

Ex LA

Ex LA

Ex LA

Ex LA

Ex LA

Ex U

Ex R/W

N 51° 12' 55" E

12"-B

12"-B

12"-B

12"-B

12"-B

12"-B

12"-B

12"-B

12"-B

12"-B

12"-B

12"-B

12"-B

12"-B

12"-B

12"-B

12"-B

12"-B

12"-B

12"-B

12"-B

12"-B

12"-B

12"-B

12"-B

12"-B

12"-B

12"-B

12"-B

12"-B

12"-B

12"-B

12"-B

12"-B

12"-B

12"-B

12"-B

12"-B

12"-B

12"-B

12"-B

12"-B

12"-B

12"-B

12"-B

12"-B

12"-B

12"-B

12"-B

12"-B

12"-B

12"-B

12"-B

12"-B

12"-B

12"-B

12"-B

12"-B

12"-B

12"-B

12"-B

12"-B

12"-B

12"-B

12"-B

12"-B

12"-B

12"-B

12"-B

12"-B

12"-B

12"-B

12"-B

12"-B

12"-B

12"-B

12"-B

12"-B

12"-B

12"-B

12"-B

12"-B

12"-B

12"-B

12"-B

12"-B

12"-B

12"-B

12"-B

12"-B

12"-B

12"-B

12"-B

12"-B

12"-B

12"-B

12"-B

12"-B

12"-B

12"-B

12"-B

12"-B

12"-B

12"-B

12"-B

12"-B

12"-B

12"-B

12"-B

12"-B

12"-B

12"-B

12"-B

12"-B

12"-B

12"-B

12"-B

12"-B

12"-B

12"-B

CROSS REFERENCES			
SHEET NO.	DESCRIPTION	SHEET NO.	DESCRIPTION
	CROSS SECTIONS		
			ESTIMATED QUANTITIES

Green - Existing
 Red - Removal
 Silver - New

New
 69+20-20'-L

69+20-40'-L
 New ~~69+20-20'-L~~

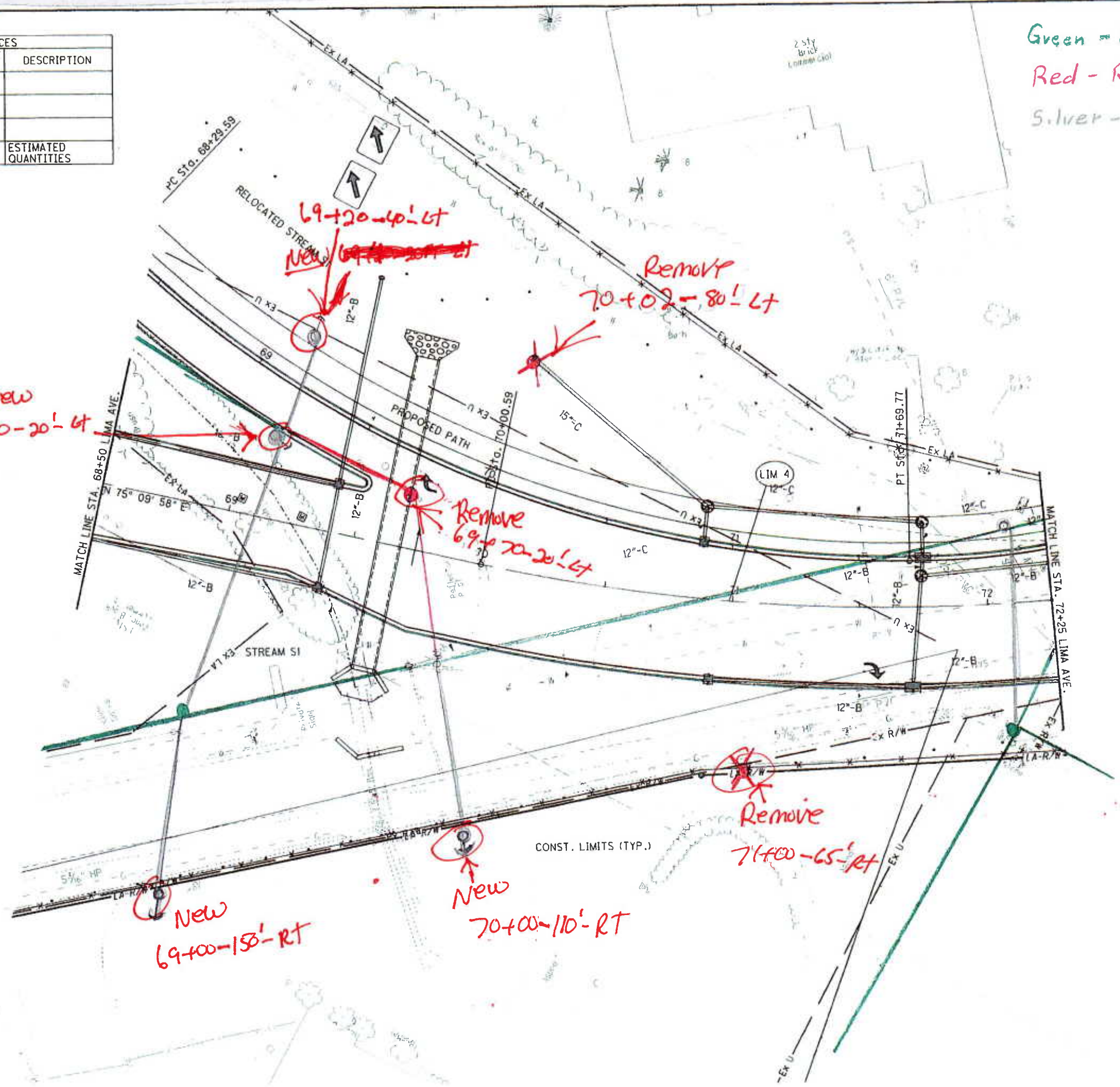
Remove
 70+02-80'-L

Remove
 69+20-20'-L

Remove
 71+00-65'-R

New
 69+00-15'-R

New
 70+00-110'-R



PLAN - LIMA AVE.
 STA. 68+50 TO STA. 72+25

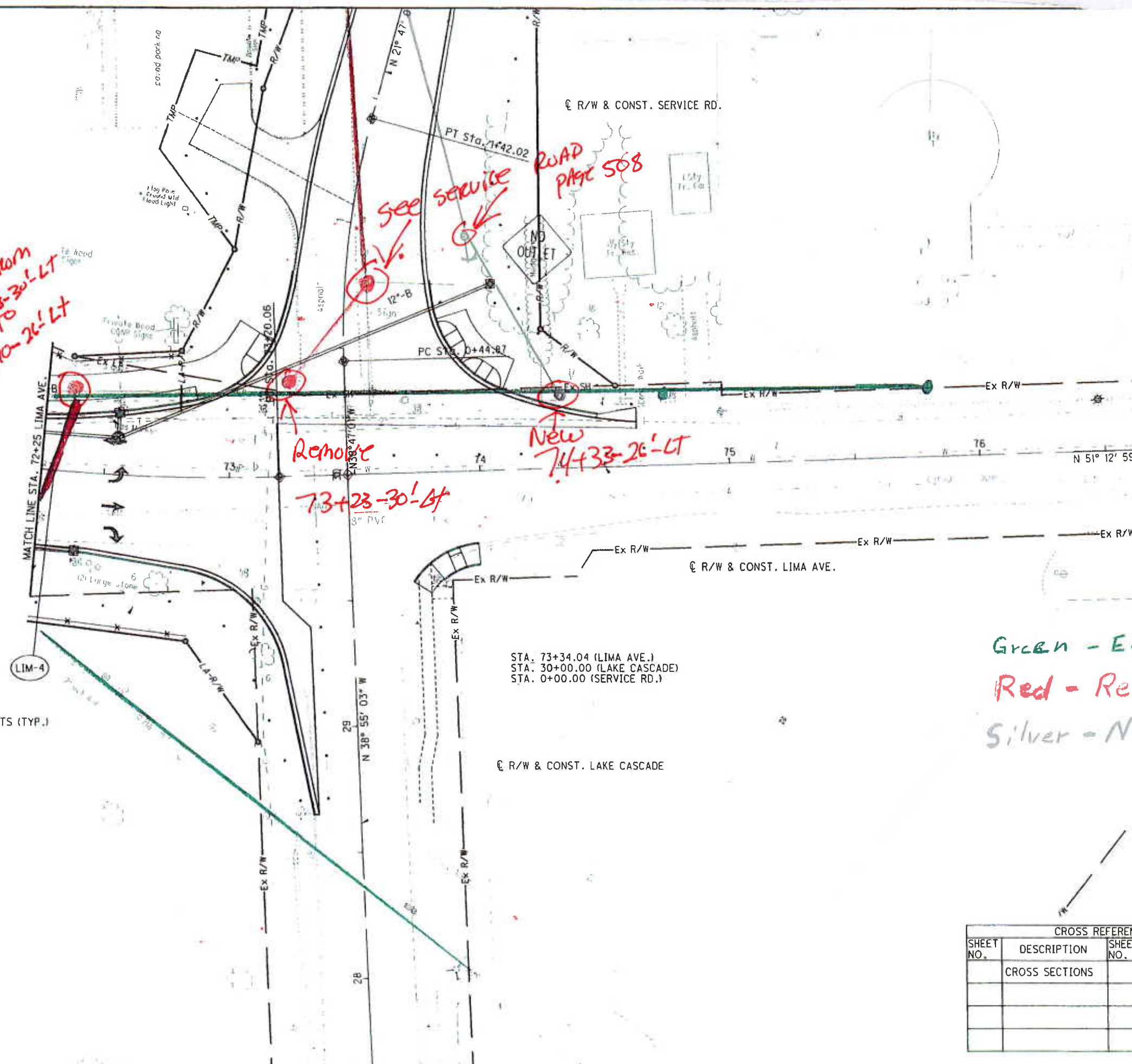
HAN-75-14.39

402
 842

CURVE LIM-4

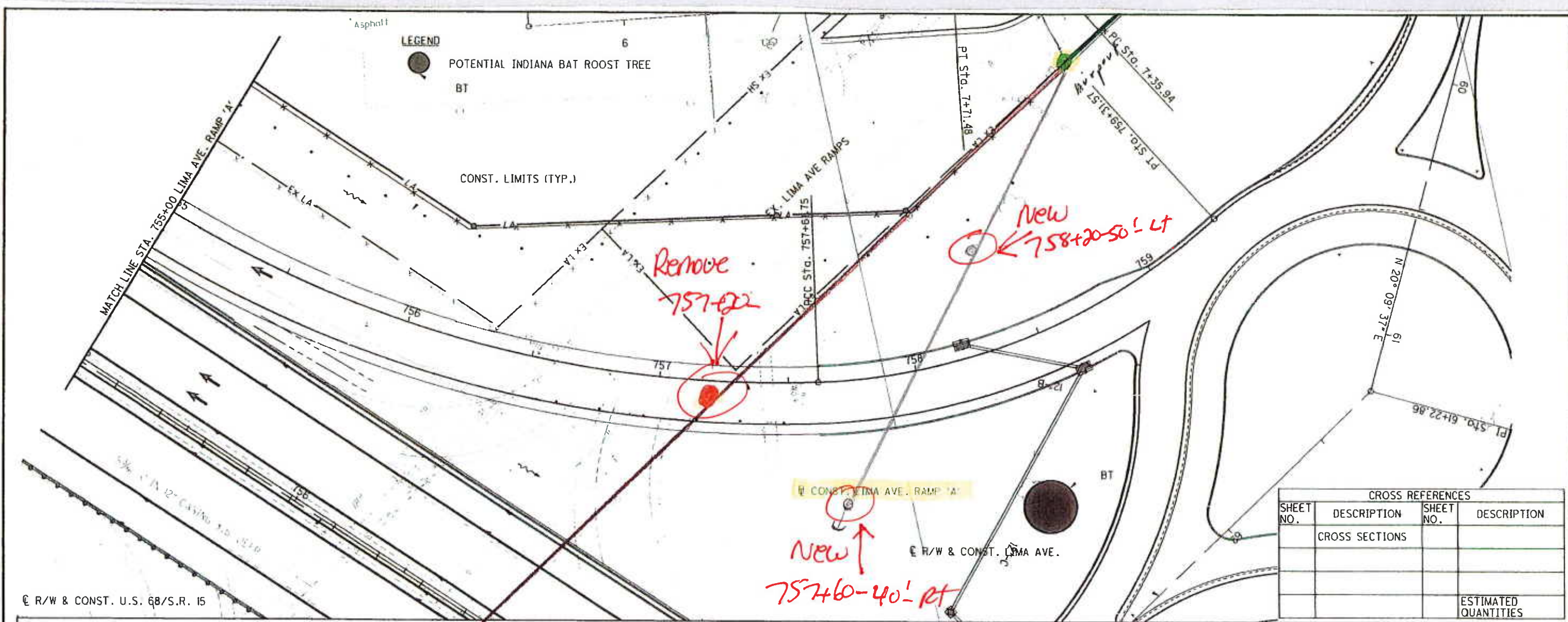
P.I. Sta. 71+15.20
 $\Delta = 29^\circ 23' 38''$ (LT)
 $D_c = 7^\circ 30' 00''$
 $R = 763.94'$
 $T = 200.37'$
 $L = 391.92'$
 $E = 25.84'$
 $C = 387.63'$
 C.B. = $N 65^\circ 54' 48'' E$
 $e_d = NC$

*Move from
72+33-30'-LT
TO
72+10-26'-LT*

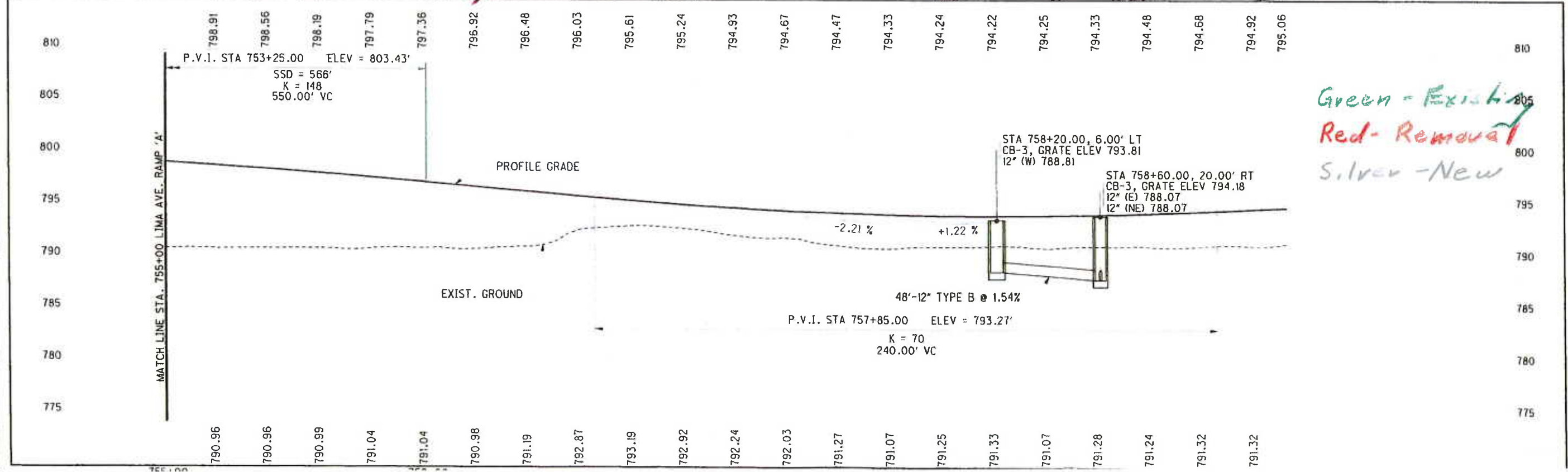


*Green - Existing
 Red - Remove
 Silver - New*

CROSS REFERENCES			
SHEET NO.	DESCRIPTION	SHEET NO.	DESCRIPTION
	CROSS SECTIONS		
			ESTIMATED QUANTITIES



CROSS REFERENCES			
SHEET NO.	DESCRIPTION	SHEET NO.	DESCRIPTION
	CROSS SECTIONS		
			ESTIMATED QUANTITIES



PLAN AND PROFILE - LIMA AVE. RAMP 'A'

STA. 755+00 TO STA. 759+08.09

HAN-75-14.39

425
943



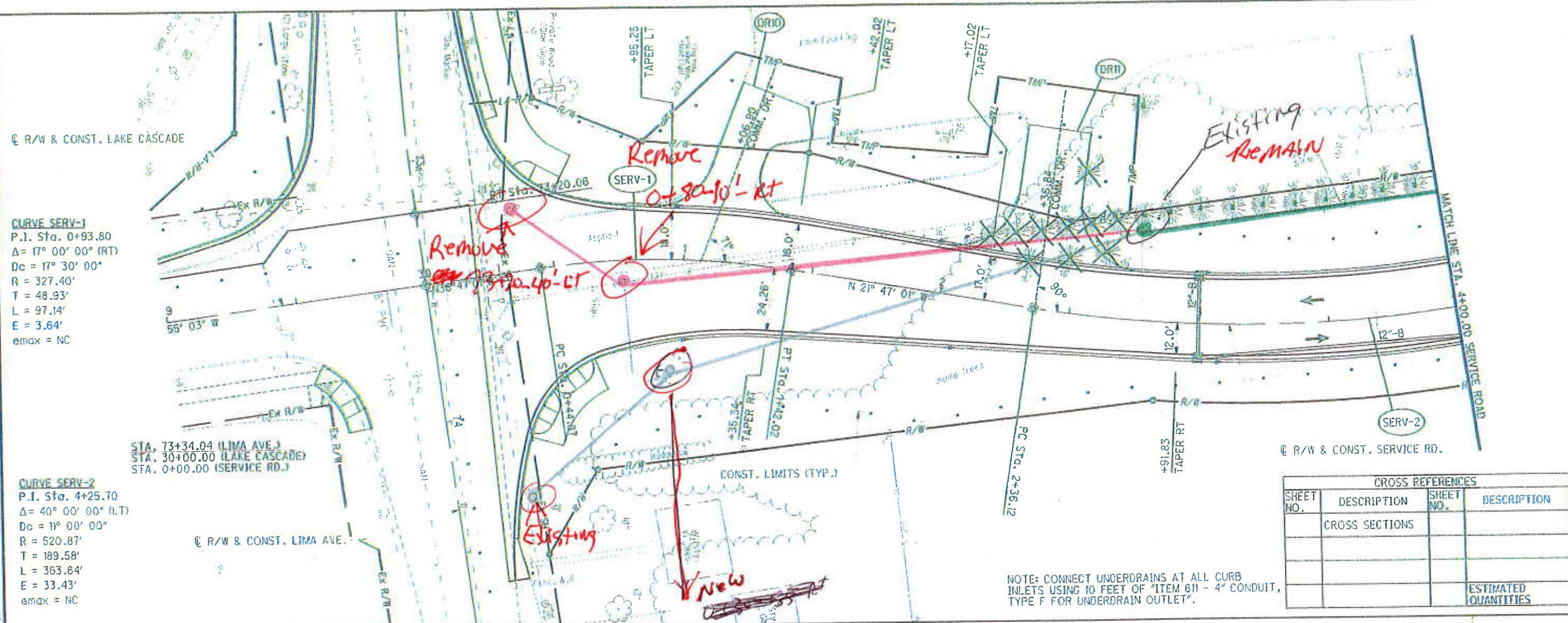
HORIZONTAL SCALE IN FEET

CLP

PLAN AND PROFILE - SERVICE ROAD
BEGIN WORK TO STA. 4+00.00

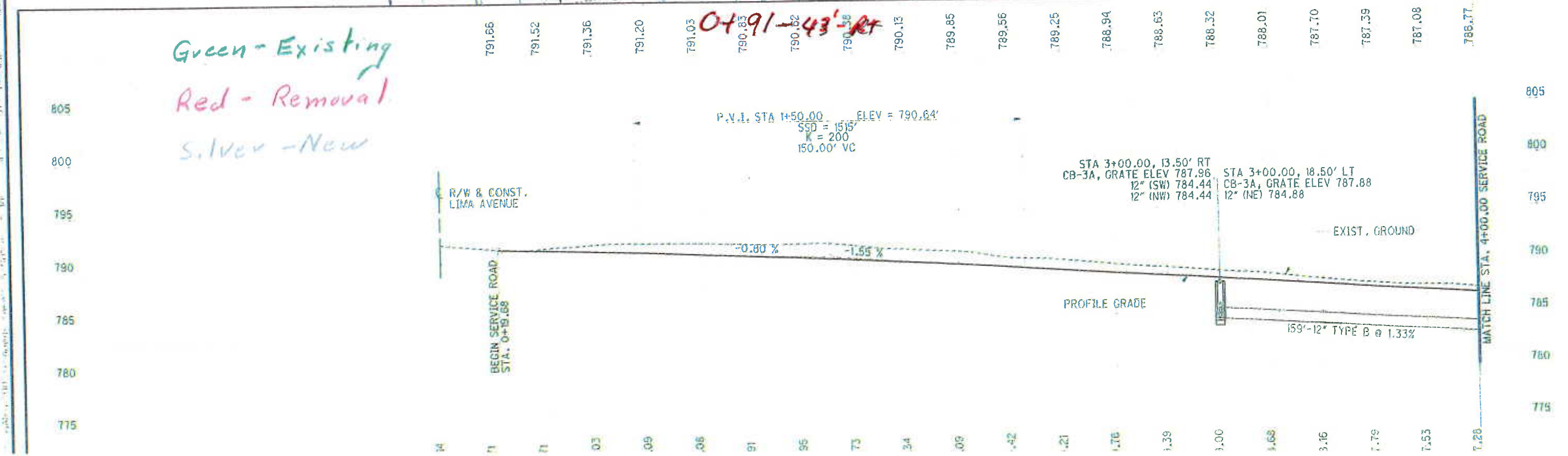
HAN-75-14.39

508
842



CROSS REFERENCES			
SHEET NO.	DESCRIPTION	SHEET NO.	DESCRIPTION
	CROSS SECTIONS		
			ESTIMATED QUANTITIES

NOTE: CONNECT UNDERDRAINS AT ALL CURB INLETS USING 10 FEET OF "ITEM 611 - 4" CONDUIT, TYPE F FOR UNDERDRAIN OUTLET".



DATE: 11/14/14

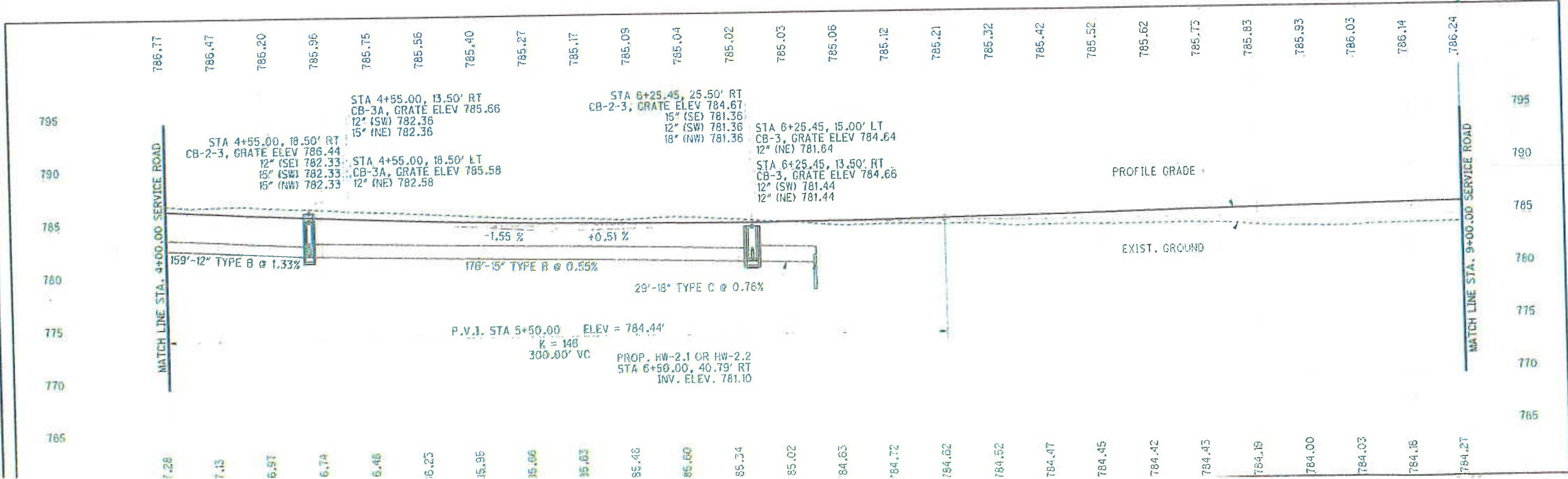
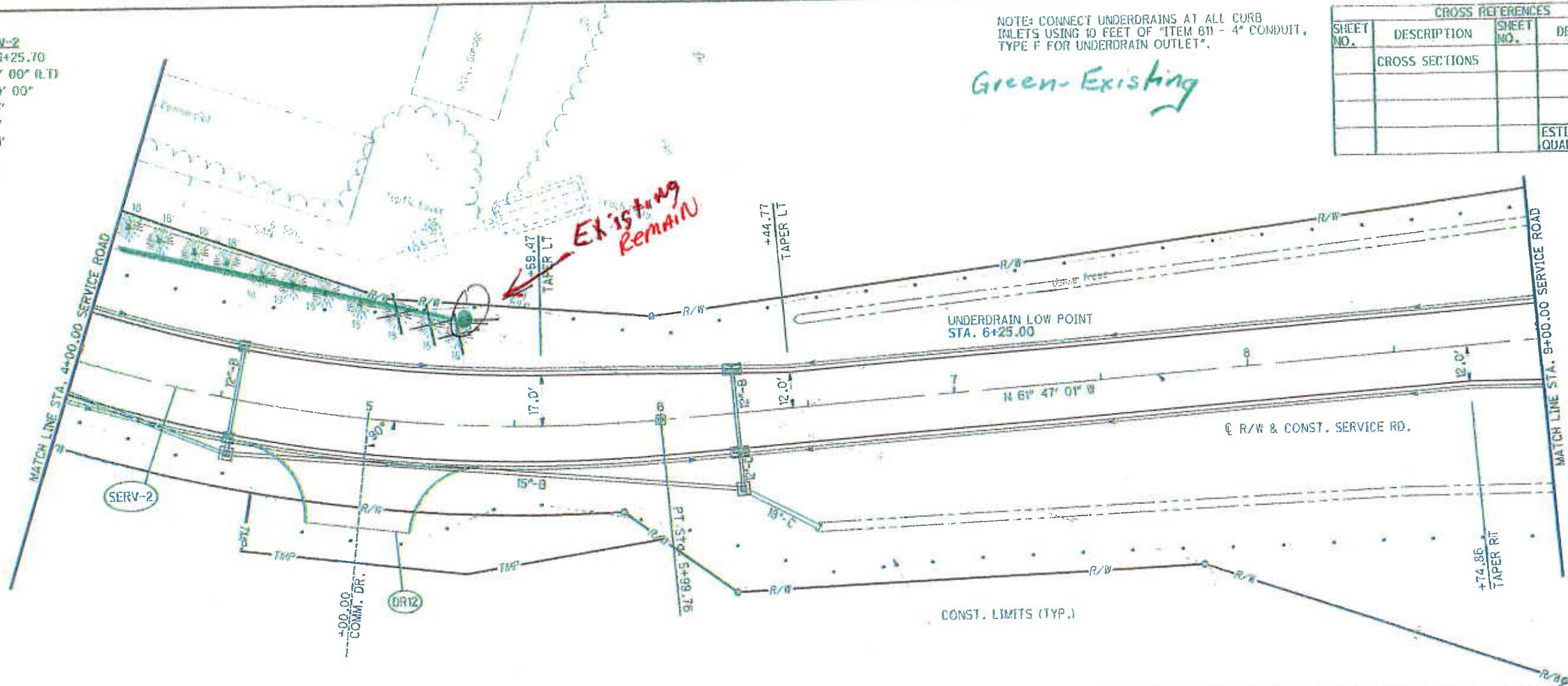
CURVE SERV-2
 P.I. Sta. 4+25.70
 $\Delta = 40^\circ 00' 00''$ (LT)
 $D_c = 11^\circ 00' 00''$
 $R = 520.87'$
 $T = 189.58'$
 $L = 363.64'$
 $E = 33.43'$
 $e_{max} = NC$

NOTE: CONNECT UNDERDRAINS AT ALL CURB INLETS USING 10 FEET OF "ITEM 611 - 4" CONDUIT, TYPE F FOR UNDERDRAIN OUTLET".

Green-Existing

CROSS REFERENCES			
SHEET NO.	DESCRIPTION	SHEET NO.	DESCRIPTION
	CROSS SECTIONS		
			ESTIMATED QUANTITIES

HORIZONTAL SCALE IN FEET
 CLP

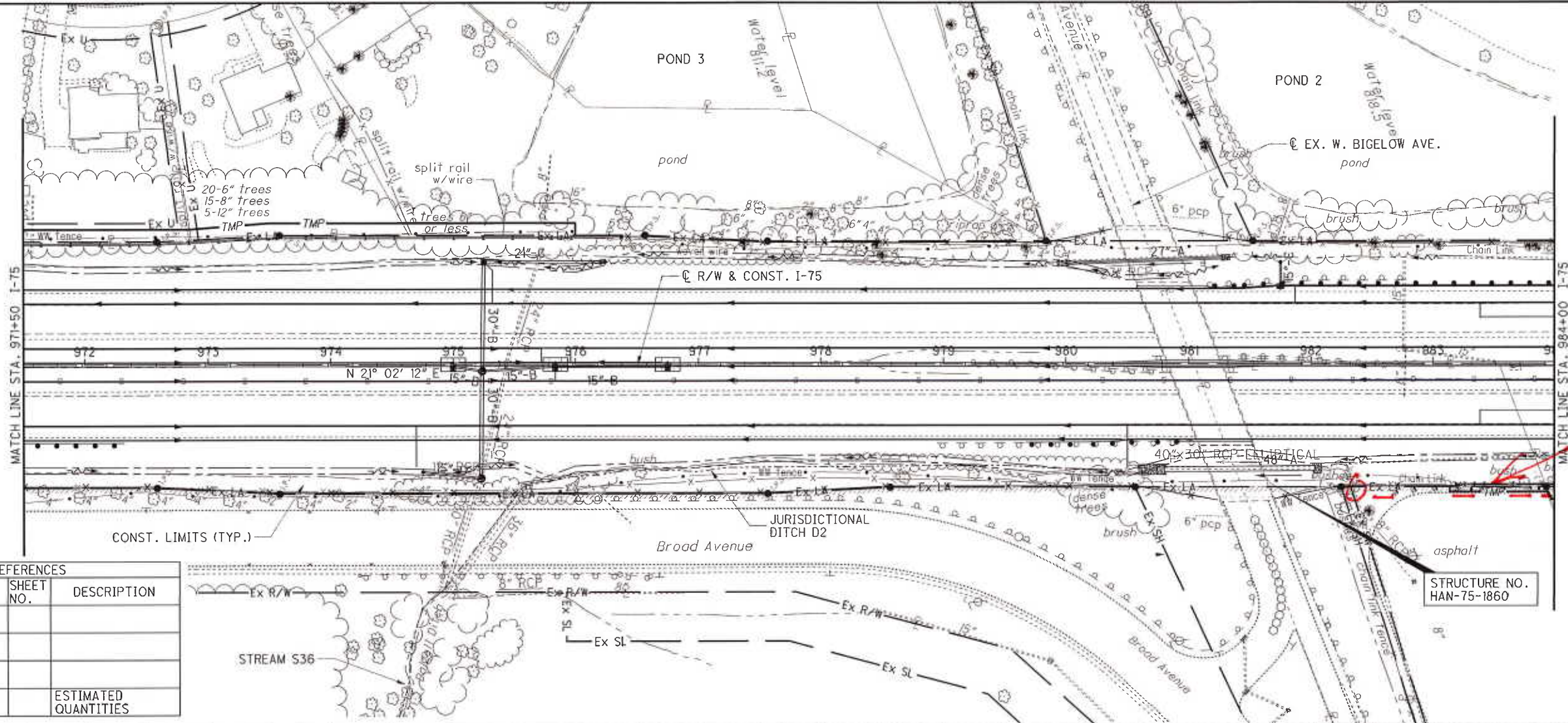


PLAN AND PROFILE - SERVICE ROAD
 STA 4+00.00 TO STA. 9+00.00

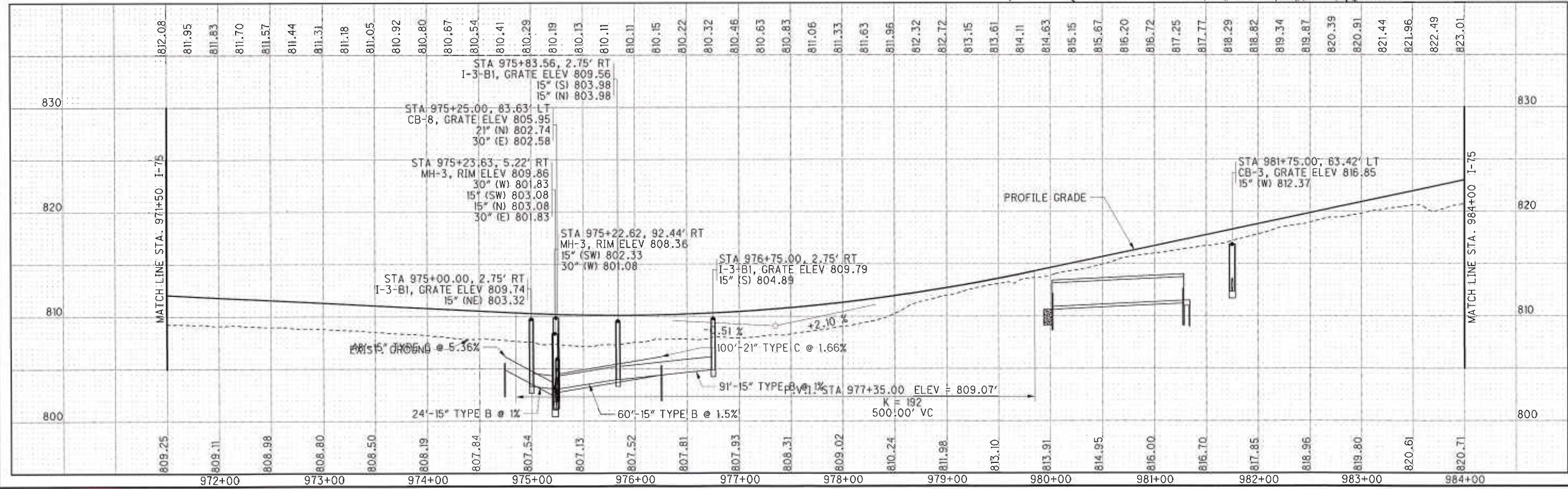
HAN-75-14.39

509
842

T:\Projects\HAN\87005\roadway\sheet\87005GP020.dgn 30-SEP-2013 10:01PM redder



CROSS REFERENCES			
SHEET NO.	DESCRIPTION	SHEET NO.	DESCRIPTION
	CROSS SECTIONS		
			ESTIMATED QUANTITIES

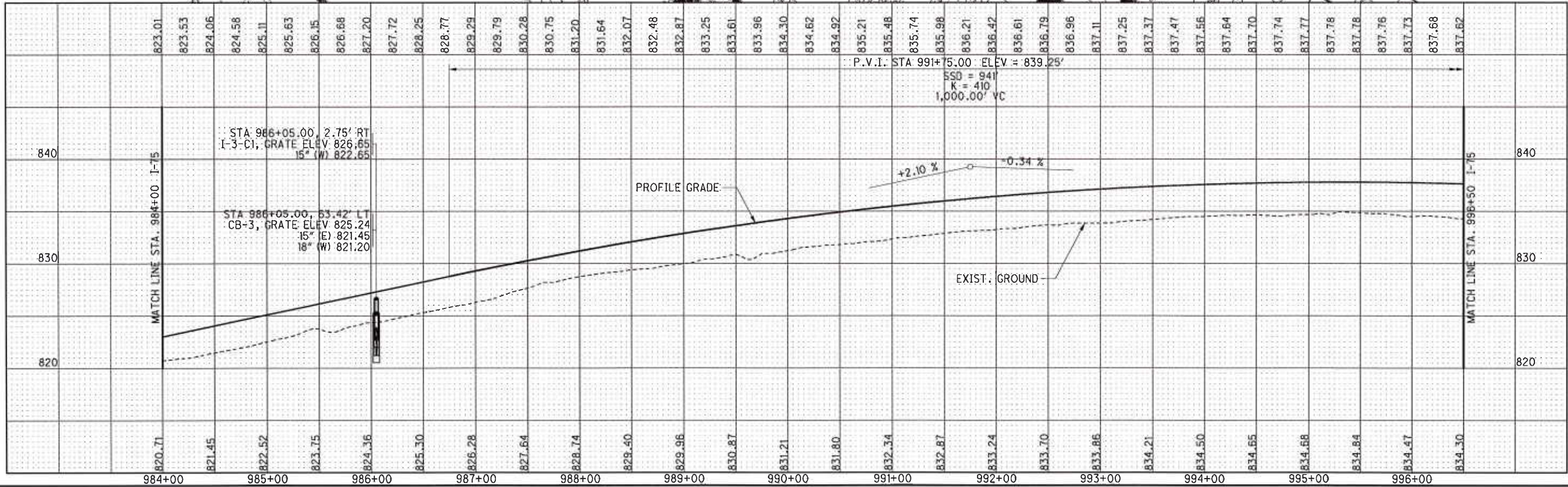
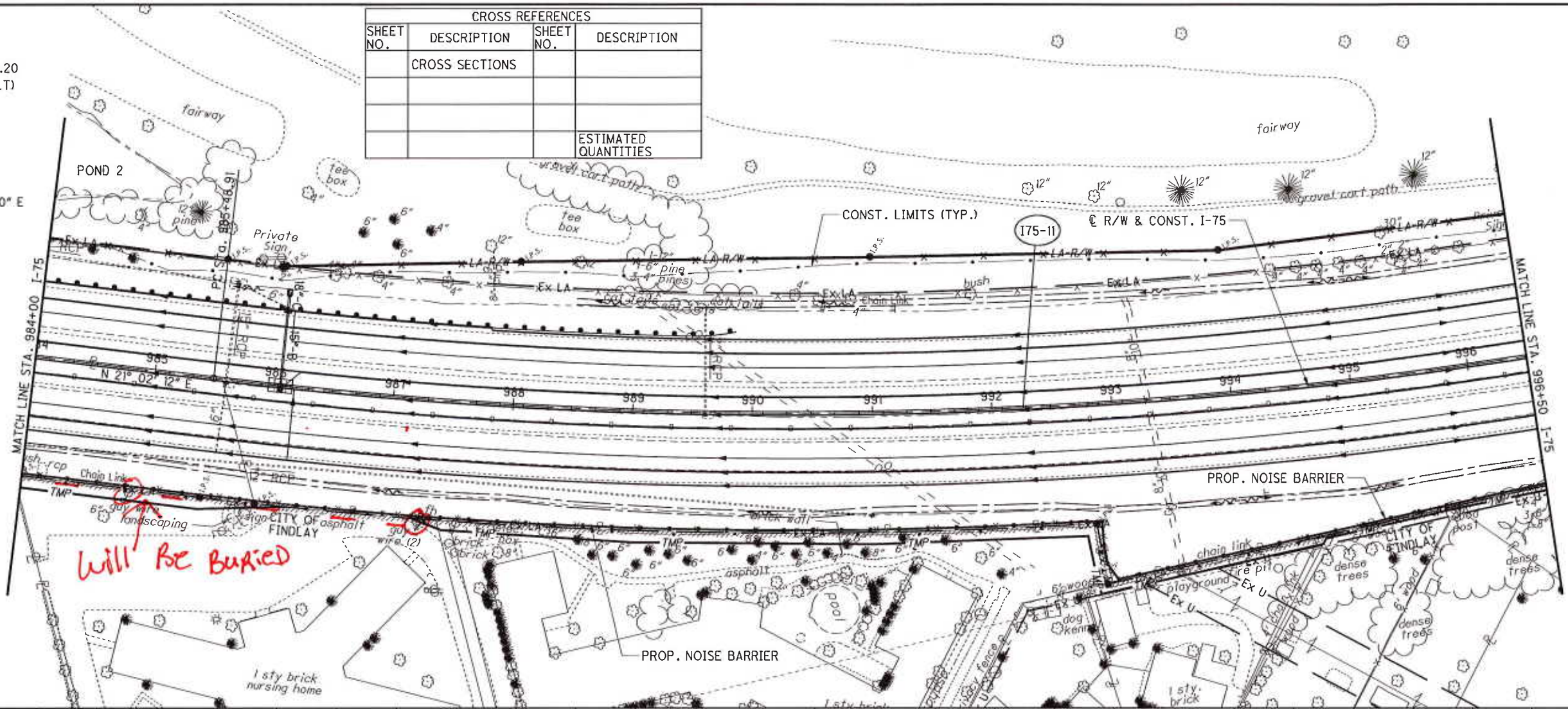


will be buried

CURVE I75-11

P.I. Sta. 992+55.20
 $\Delta = 20^\circ 02' 25''$ (LT)
 $D_c = 1^\circ 26' 00''$
 $R = 3,997.38'$
 $T = 706.30'$
 $L = 1,398.16'$
 $E = 61.92'$
 $C = 1,391.04'$
 $C.B. = N 11^\circ 01' 00'' E$
 $e_d = 0.044$

CROSS REFERENCES			
SHEET NO.	DESCRIPTION	SHEET NO.	DESCRIPTION
	CROSS SECTIONS		
			ESTIMATED QUANTITIES



PLAN AND PROFILE - I-75
 STA. 984+00 TO STA. 996+50

HAN-75-14.39

128
 842