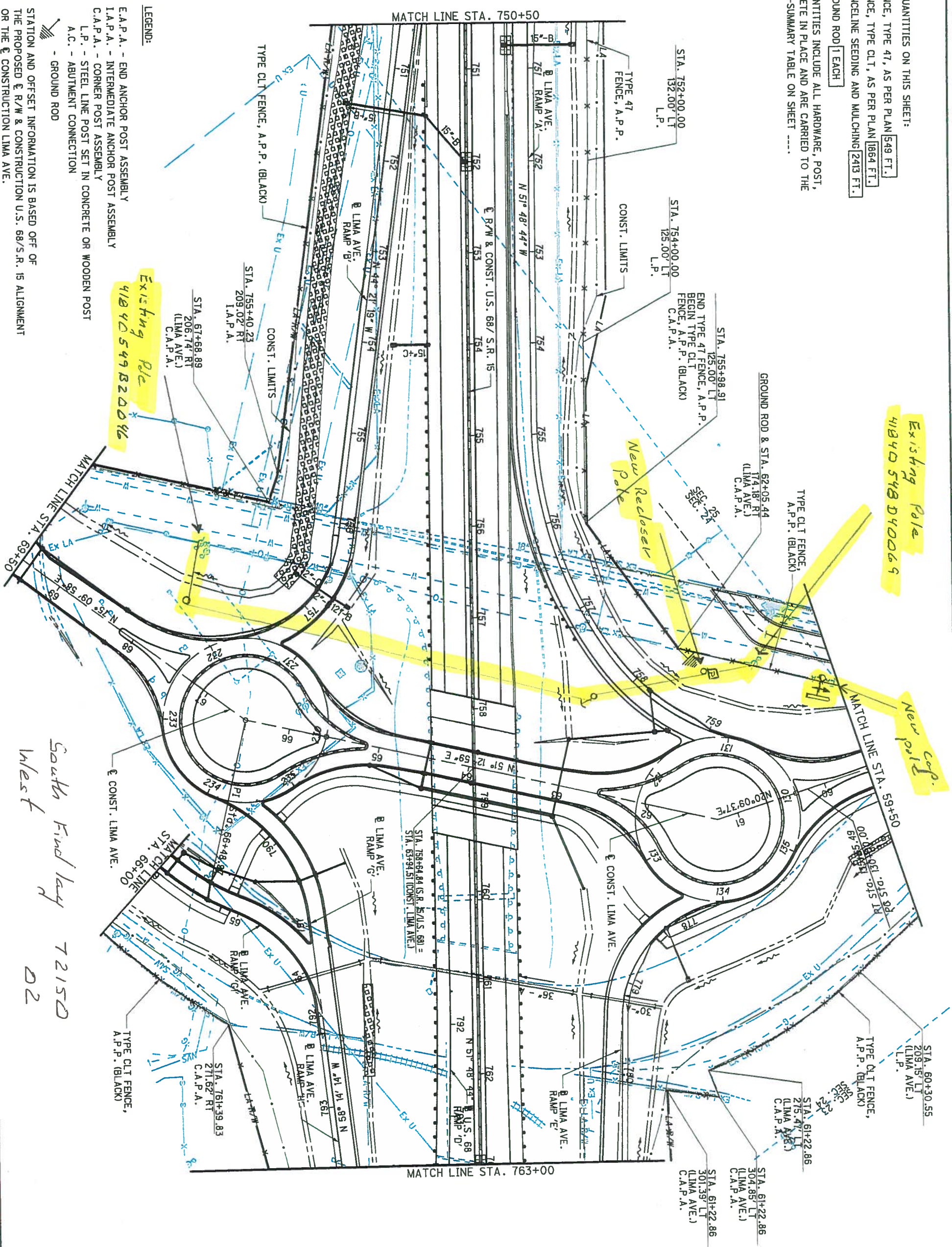


ESTIMATED QUANTITIES ON THIS SHEET:
 ITEM 607 FENCE, TYPE 47, AS PER PLAN 549 FT.
 ITEM 607 FENCE, TYPE CLT, AS PER PLAN 1864 FT.
 ITEM 607 FENCELINE SEEDING AND MULCHING 2413 FT.
 ITEM 625 GROUND ROD 1 EACH

FENCING QUANTITIES INCLUDE ALL HARDWARE, POST, ETC., COMPLETE IN PLACE AND ARE CARRIED TO THE FENCING SUB-SUMMARY TABLE ON SHEET ----.



LEGEND:

- E.A.P.A. - END ANCHOR POST ASSEMBLY
 - I.A.P.A. - INTERMEDIATE ANCHOR POST ASSEMBLY
 - C.A.P.A. - CORNER POST ASSEMBLY
 - L.P. - STEEL LINE POST SET IN CONCRETE OR WOODEN POST
 - A.C. - ABUTMENT CONNECTION
 - GROUND ROD
- STATION AND OFFSET INFORMATION IS BASED OFF OF THE PROPOSED R/W & CONSTRUCTION U.S. 68/S.R. 15 ALIGNMENT OR THE CONST. LIMA AVE.

FENCING PLAN
 U.S. 68/ S.R. 15
 STA. 750+50 TO STA. 763+00

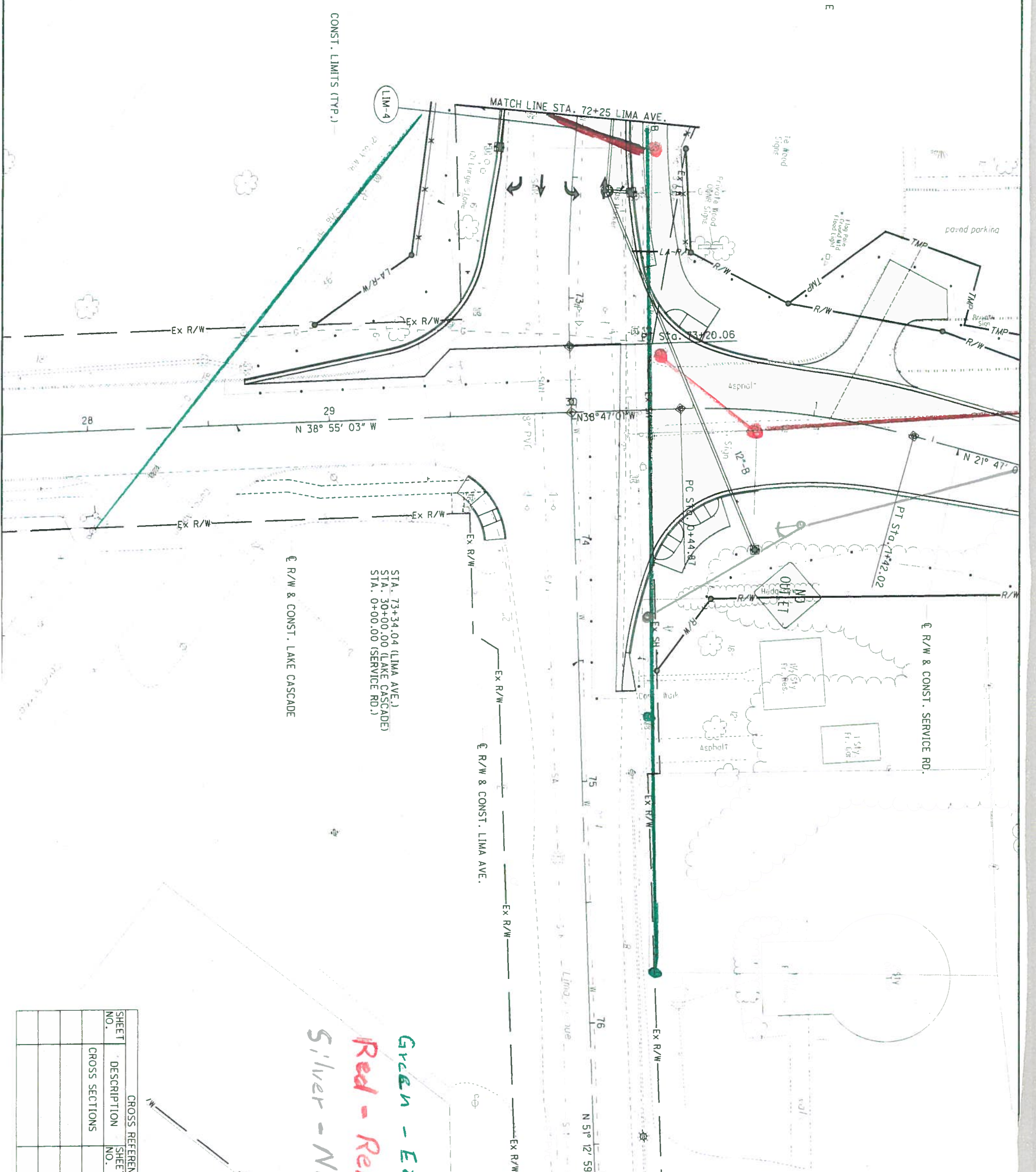
| | | | |
|------------|--------------------------|----|-----|
| CALCULATED | 0 | 50 | 100 |
| BLM | [Scale Bar] | | |
| CHECKED | 25 | | |
| ABS | HORIZONTAL SCALE IN FEET | | |

HAN-75-14.39



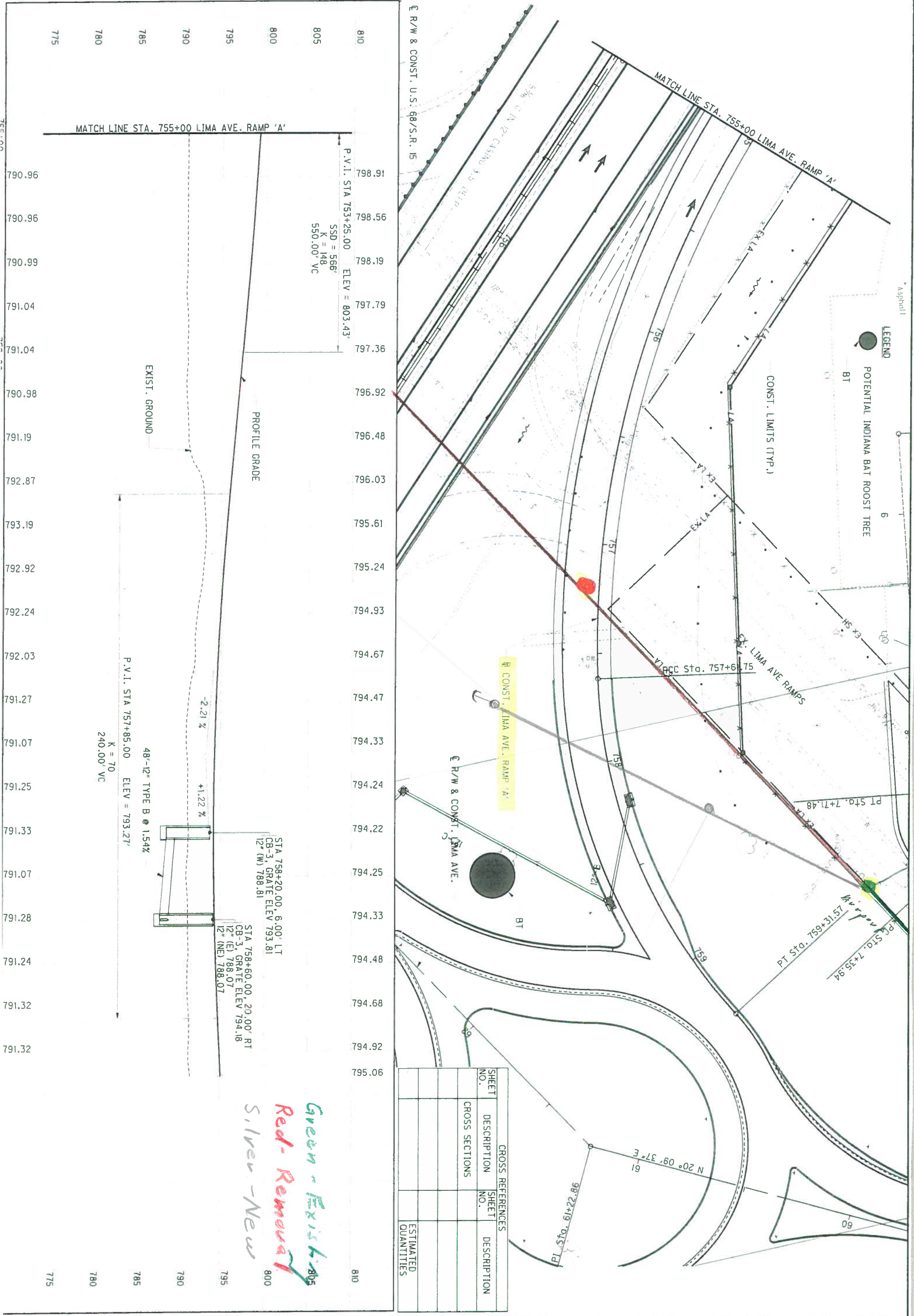
South Findley 7215D
 West 02

CURVE LIM-4
 P.I. Sta. 71+15.20
 $\Delta = 29^\circ 23' 38''$ (LT)
 $D_c = 7^\circ 30' 00''$
 $R = 763.94'$
 $T = 200.37'$
 $L = 391.92'$
 $E = 25.84'$
 $C = 387.63'$
 C.B. = N $65^\circ 54' 48''$ E
 $e_d = NC$



Green - Existing
Red - Remove
Silver - New

| CROSS REFERENCES | | | |
|------------------|----------------|-----------|----------------------|
| SHEET NO. | DESCRIPTION | SHEET NO. | DESCRIPTION |
| | CROSS SECTIONS | | |
| | | | ESTIMATED QUANTITIES |



| CROSS REFERENCES | | | |
|------------------|----------------|-----------|----------------------|
| SHEET NO. | DESCRIPTION | SHEET NO. | DESCRIPTION |
| | CROSS SECTIONS | | |
| | | | ESTIMATED QUANTITIES |

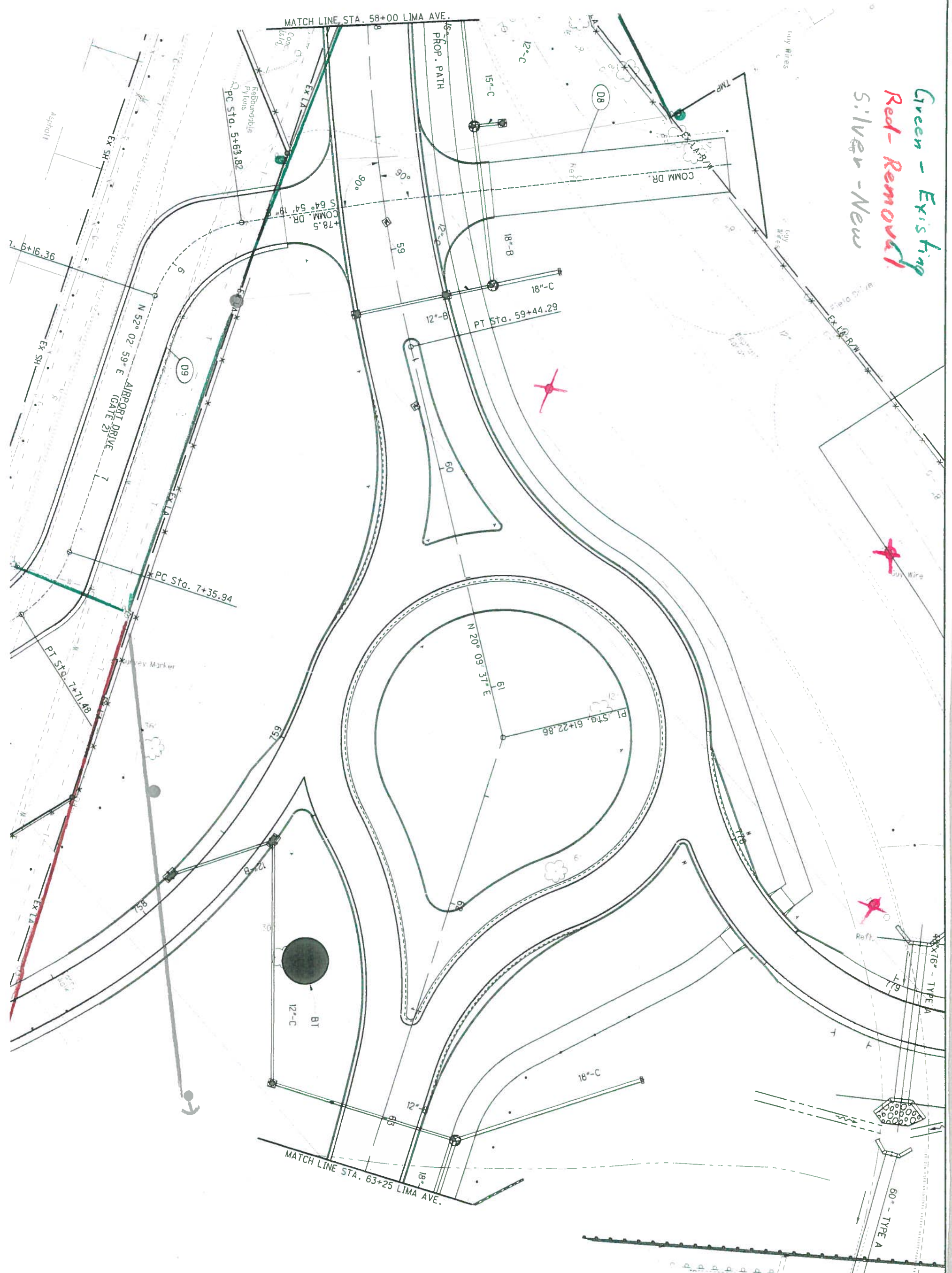
Green - Existing
 Red - Removal
 Silver - New



CALCULATED 0
 HORIZONTAL SCALE IN FEET

425
 943

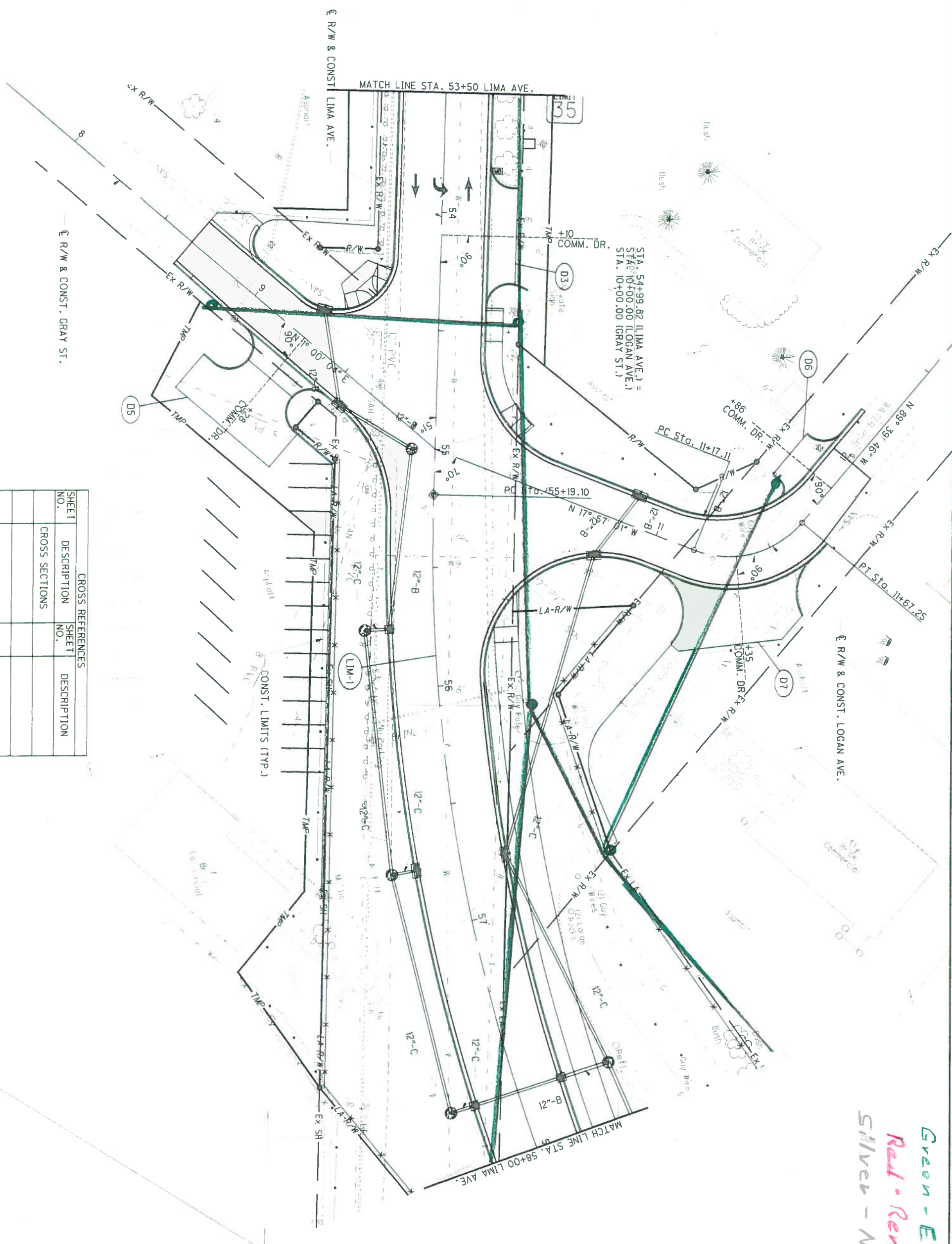
Green - Existing
Red - Removal
Silver - New



HAN-75-14.39

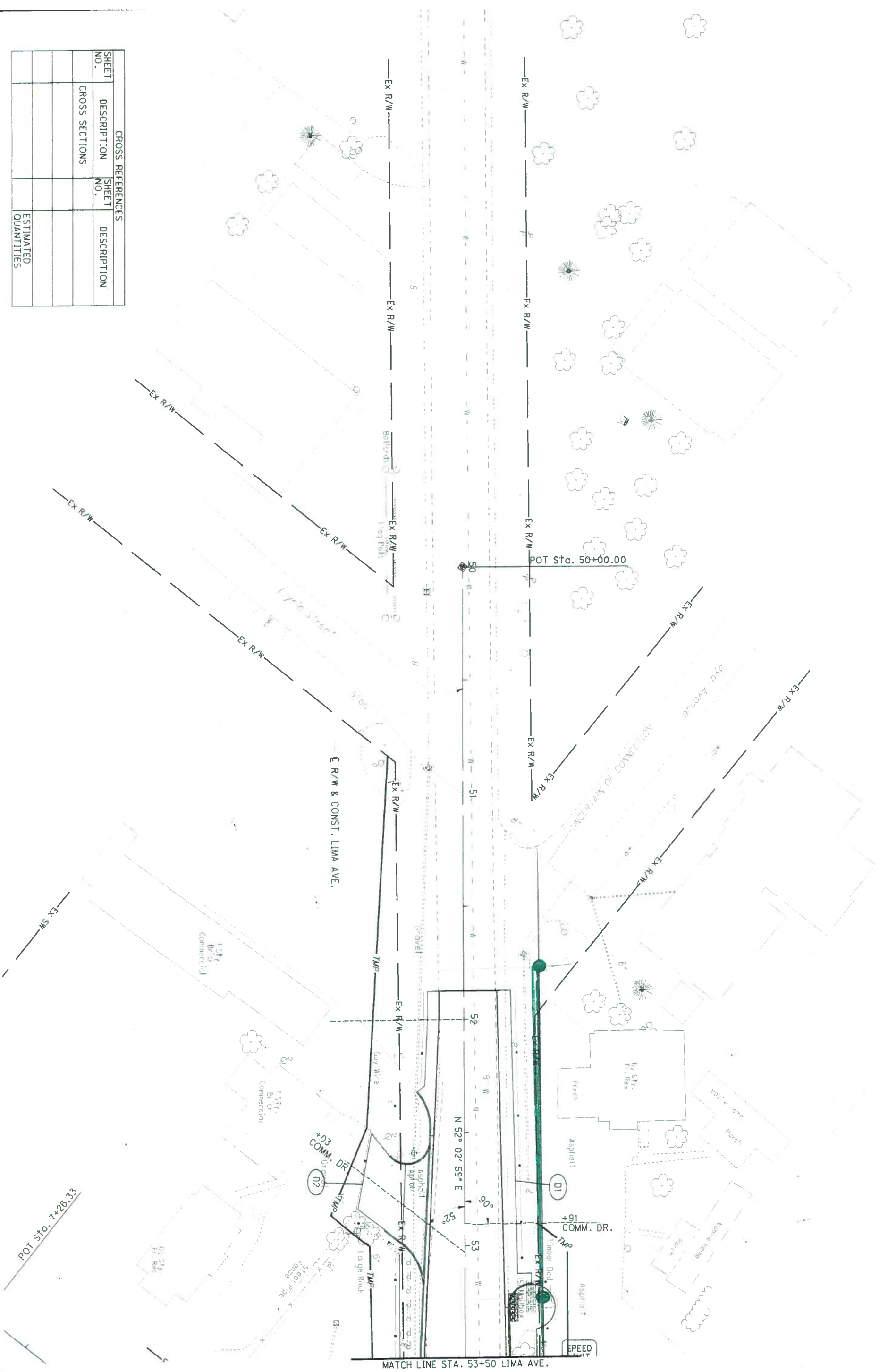
PLAN - LIMA AVE.
STA. 58+00 TO STA. 63+25

| | | | |
|---|-----|-----|--|
| <table border="1"> <tr><td>398</td></tr> <tr><td>847</td></tr> </table> | 398 | 847 | <p>SCALE</p> <p>HORIZONTAL SCALE IN FEET</p> |
| 398 | | | |
| 847 | | | |



| CROSS REFERENCES | | ESTIMATED QUANTITIES | |
|------------------|----------------|----------------------|-------------|
| SHEET NO. | DESCRIPTION | SHEET NO. | DESCRIPTION |
| | CROSS SECTIONS | | |
| | | | |
| | | | |
| | | | |
| | | | |

| CROSS REFERENCES | | | |
|------------------|----------------|-----------|----------------------|
| SHEET NO. | DESCRIPTION | SHEET NO. | DESCRIPTION |
| | CROSS SECTIONS | | |
| | | | |
| | | | ESTIMATED QUANTITIES |



Green - Existing

**PLAN - LIMA AVE.
BEGIN WORK TO STA. 53+50**

HAN-75-14.39

| | | |
|------------|------|--------------------------|
| CALCULATED | DATE | |
| DRAWN | DATE | |
| | | HORIZONTAL SCALE IN FEET |

394
RAD