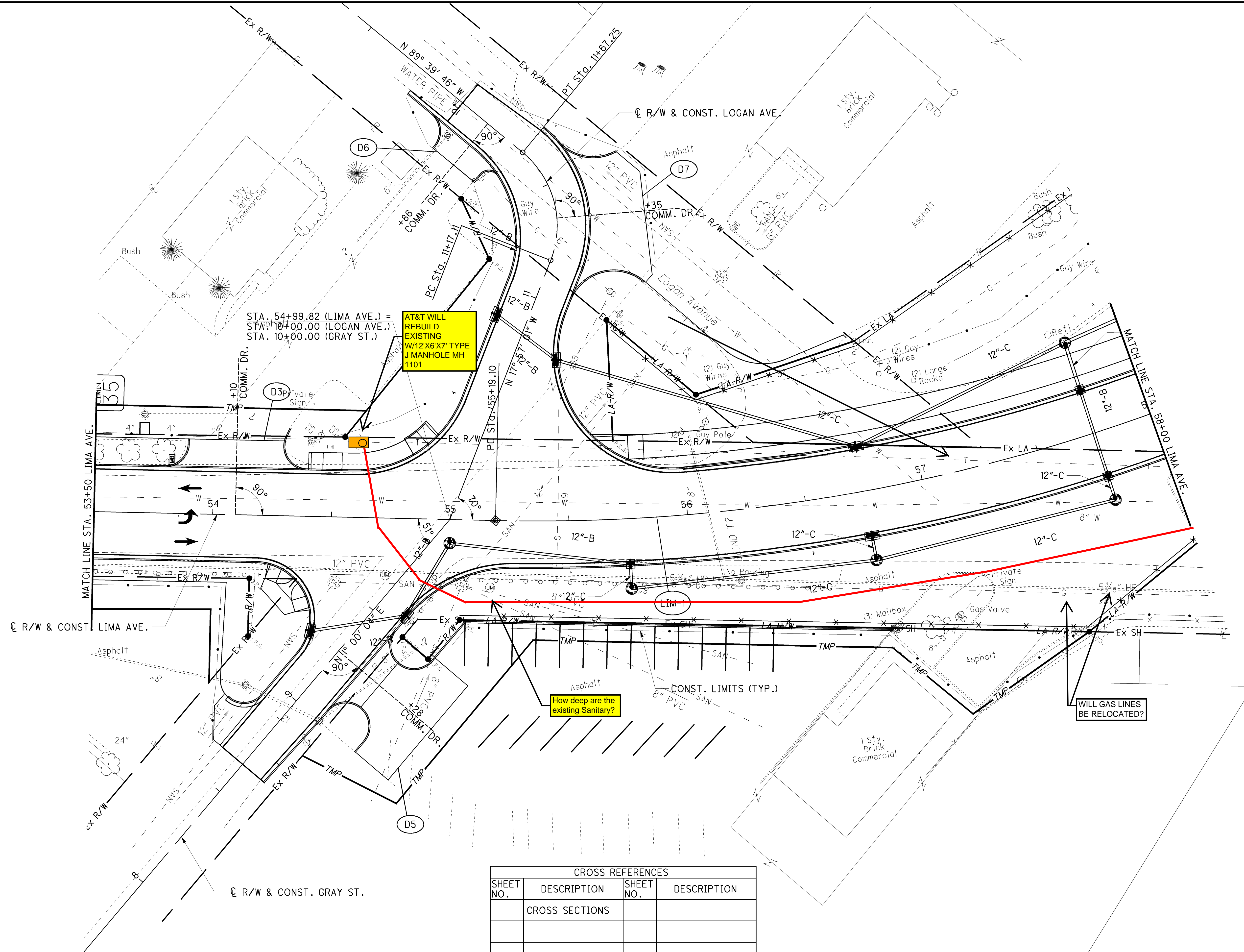


T:\Projects\HAN\87005\roadway\sheets\87005GP202.dgn 30-SEP-2013 10:03PM reddeni



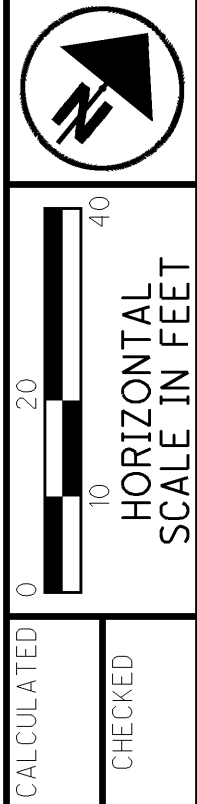
STA. 54+99.82 (LIMA AVE.) =
 STA. 10+00.00 (LOGAN AVE.)
 STA. 10+00.00 (GRAY ST.)

AT&T WILL REBUILD EXISTING W/12"X6"X7" TYPE J MANHOLE MH 1101

How deep are the existing Sanitary?

WILL GAS LINES BE RELOCATED?

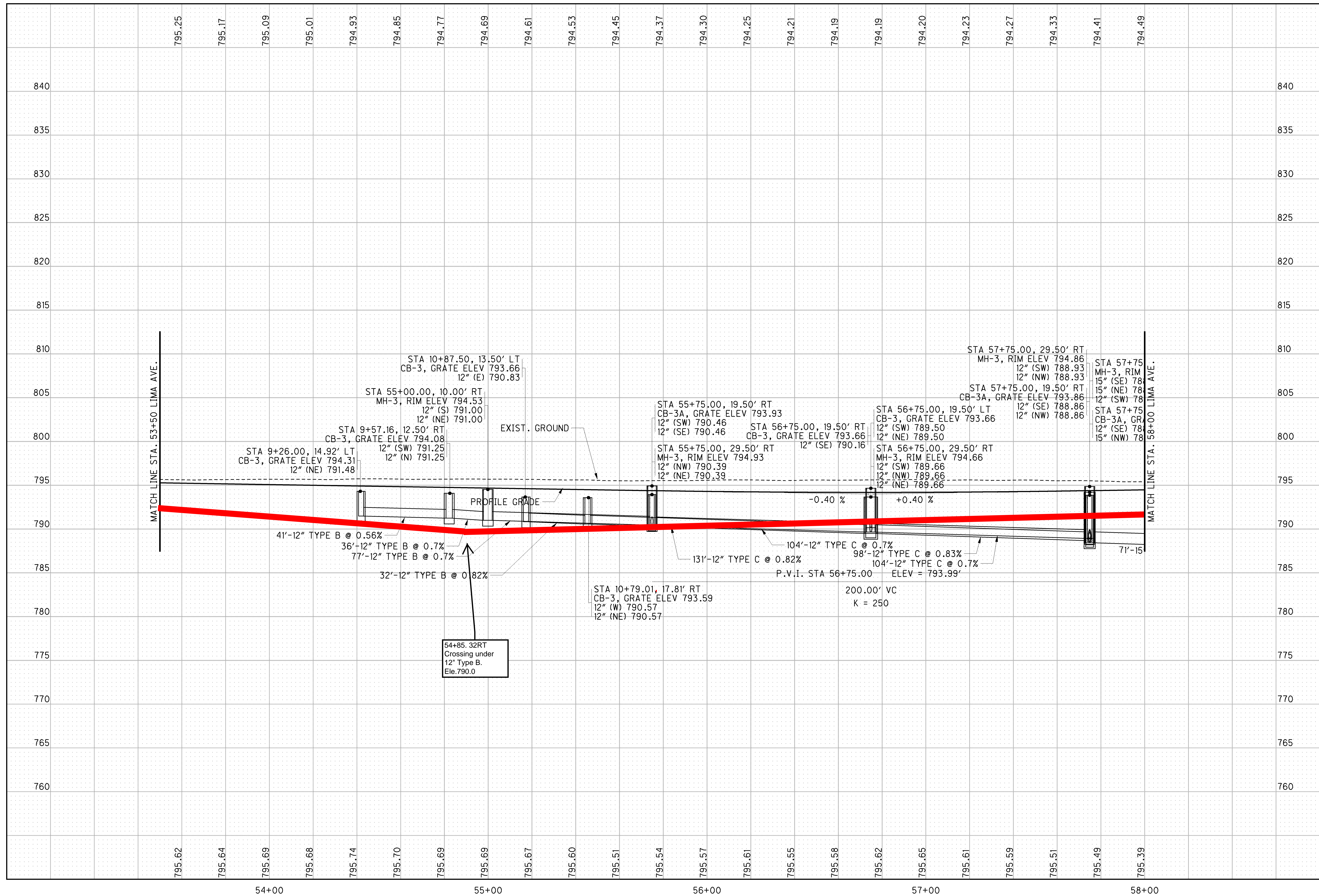
CROSS REFERENCES			
SHEET NO.	DESCRIPTION	SHEET NO.	DESCRIPTION
	CROSS SECTIONS		
			ESTIMATED QUANTITIES



PLAN - LIMA AVE.
 STA. 53+50 TO STA. 58+00

HAN-75-14.39

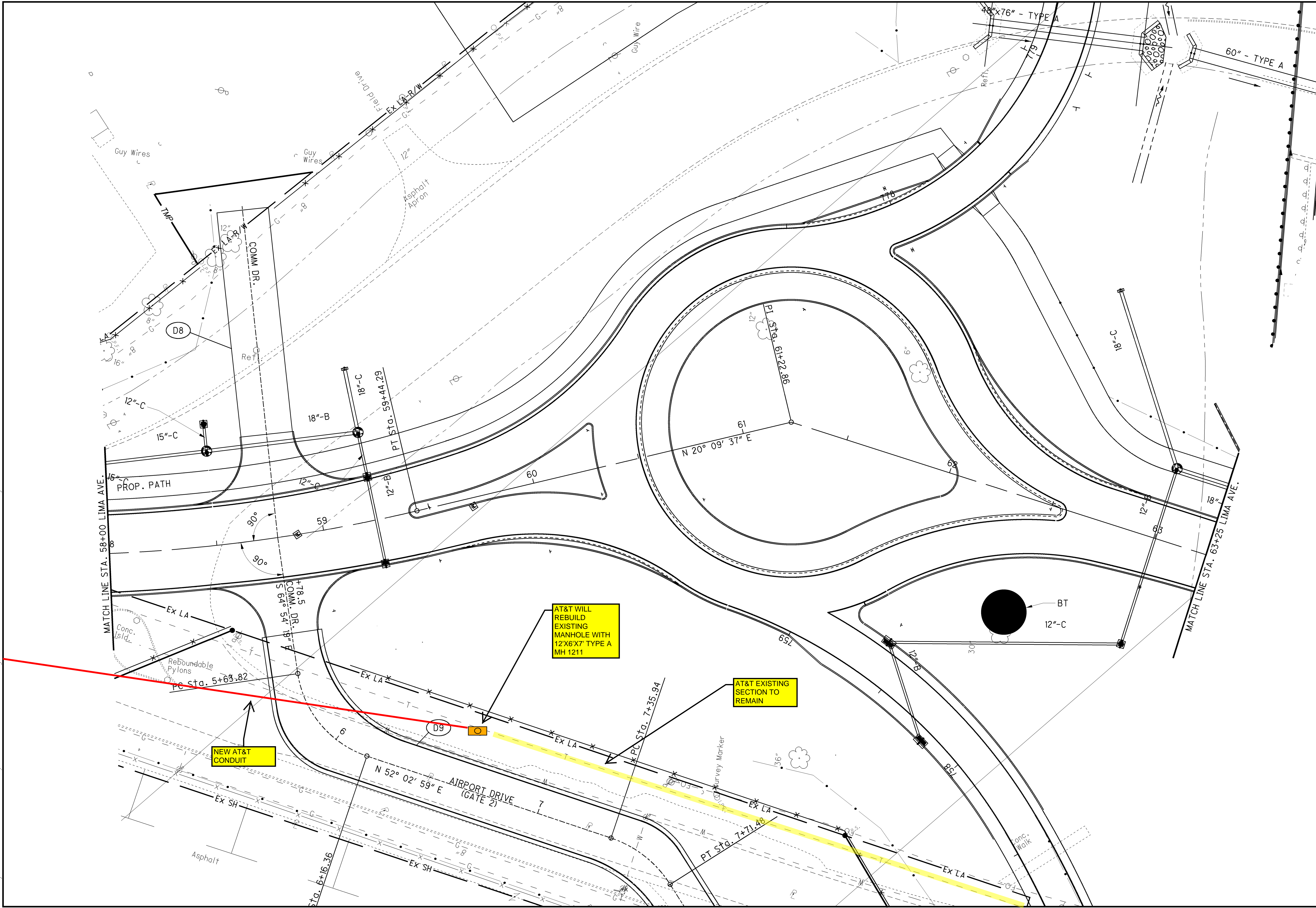
396
 842



CALCULATED
CHECKED

PROFILE - LIMA AVE.
STA. 53+50 TO STA. 58+00

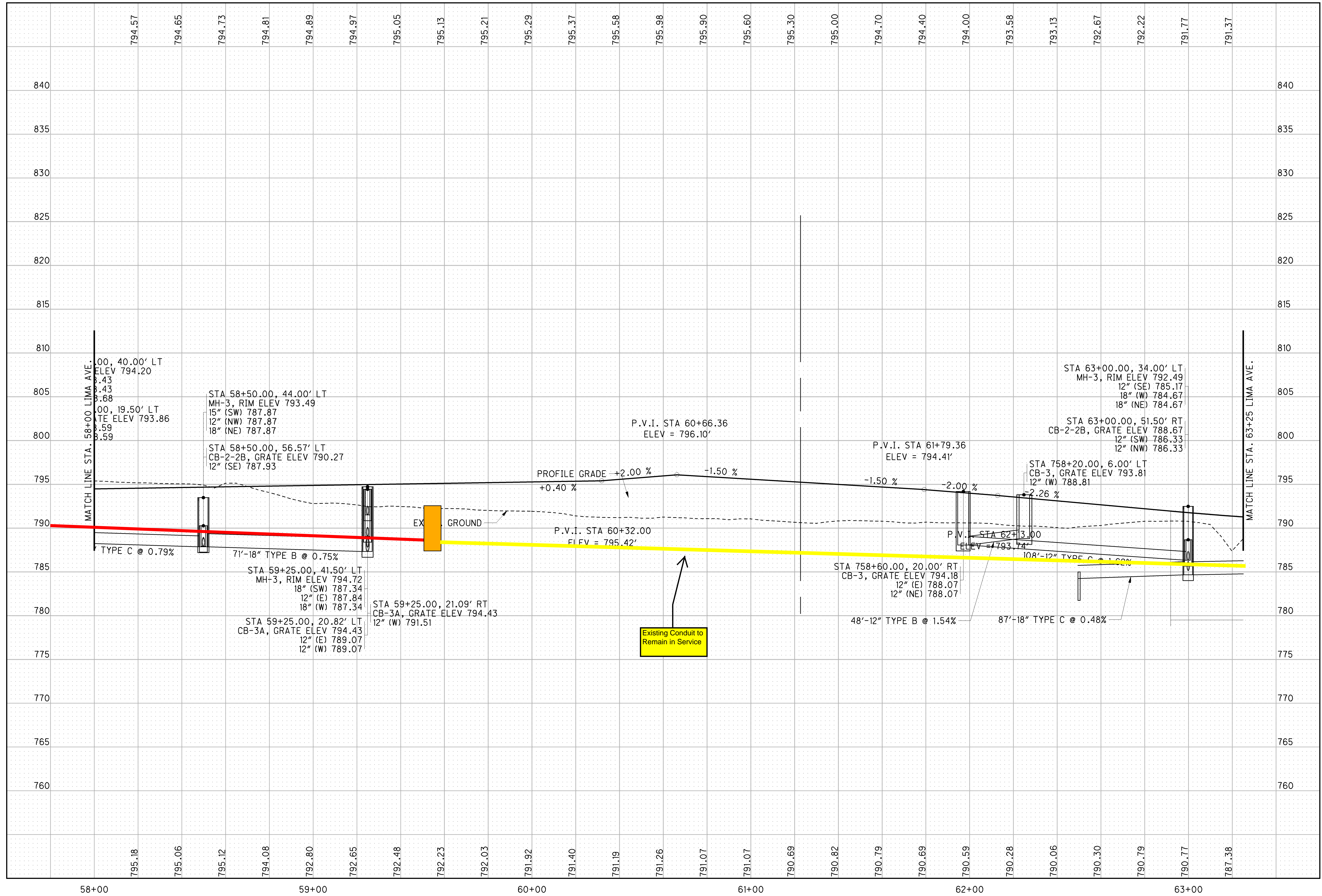
HAN-75-14.39



CALCULATED
CHECKED

PLAN - LIMA AVE.
STA. 58+00 TO STA. 63+25

HAN-75-14.39
398
842



**PROFILE - LIMA AVE.
STA. 58+00 TO STA. 63+25**

HAN-75-14.39

CALCULATED
CHECKED

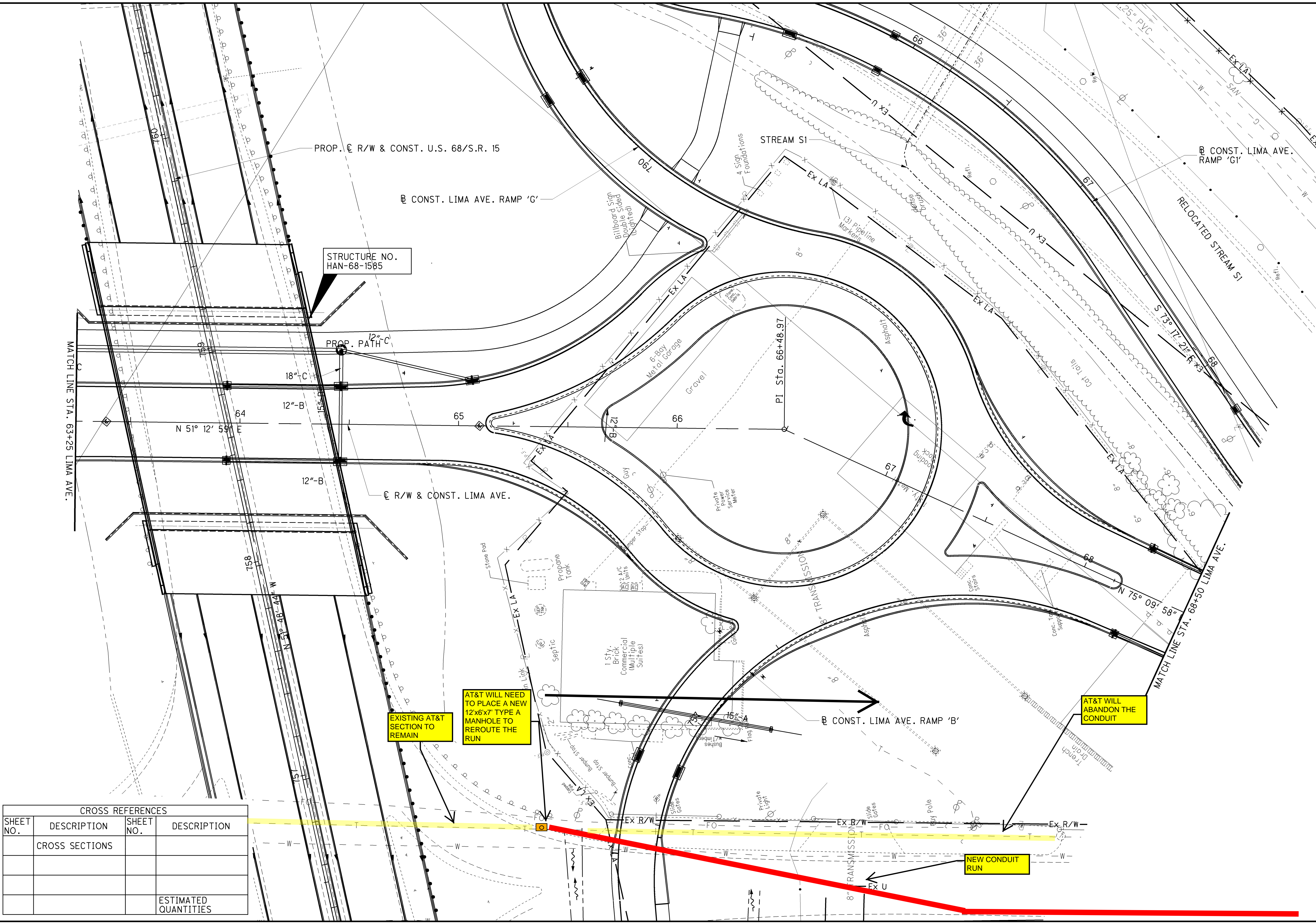
T:\Projects\HAN\87005\roadway\sheet\87005GP204.dgn 30-SEP-2013 10:03PM reddeni

CALCULATED
CHECKED

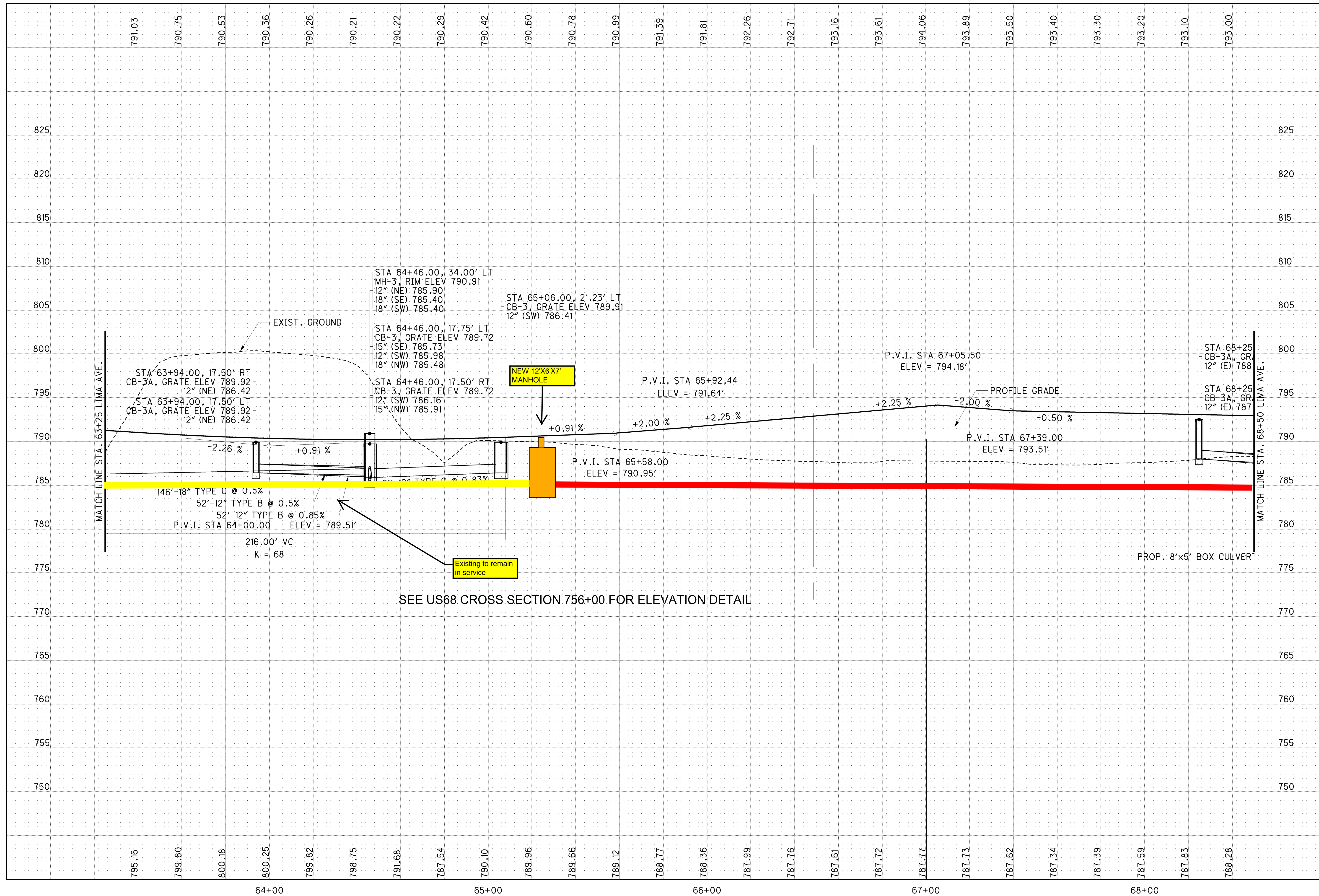
**PLAN - LIMA AVE.
STA. 63+25 TO STA. 68+50**

HAN-75-14.39

400
842



CROSS REFERENCES			
SHEET NO.	DESCRIPTION	SHEET NO.	DESCRIPTION
	CROSS SECTIONS		
			ESTIMATED QUANTITIES



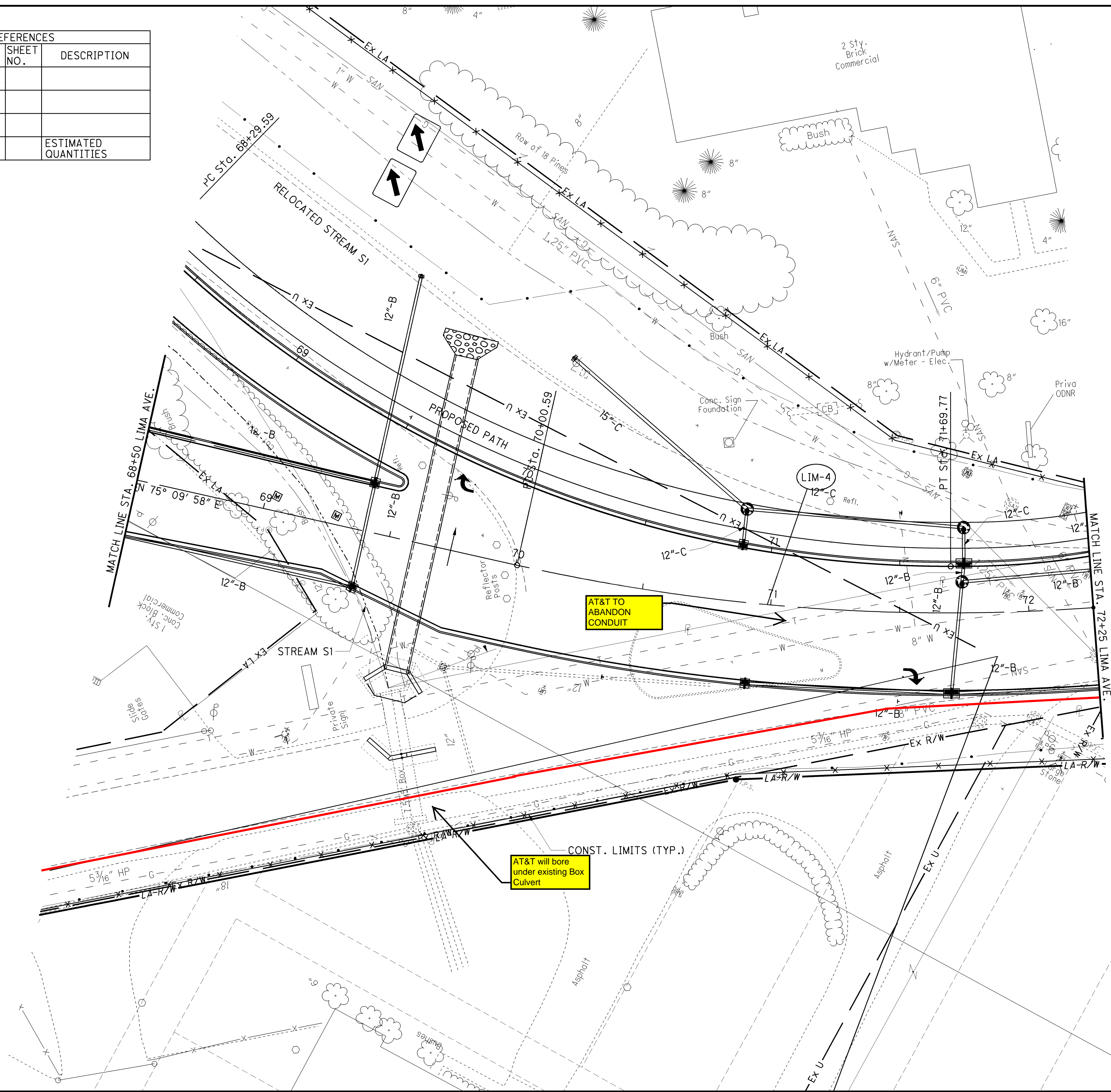
SEE US68 CROSS SECTION 756+00 FOR ELEVATION DETAIL

CALCULATED
CHECKED

**PROFILE - LIMA AVE.
STA. 63+25 TO STA. 68+50**

HAN-75-14.39

CROSS REFERENCES			
SHEET NO.	DESCRIPTION	SHEET NO.	DESCRIPTION
	CROSS SECTIONS		
			ESTIMATED QUANTITIES

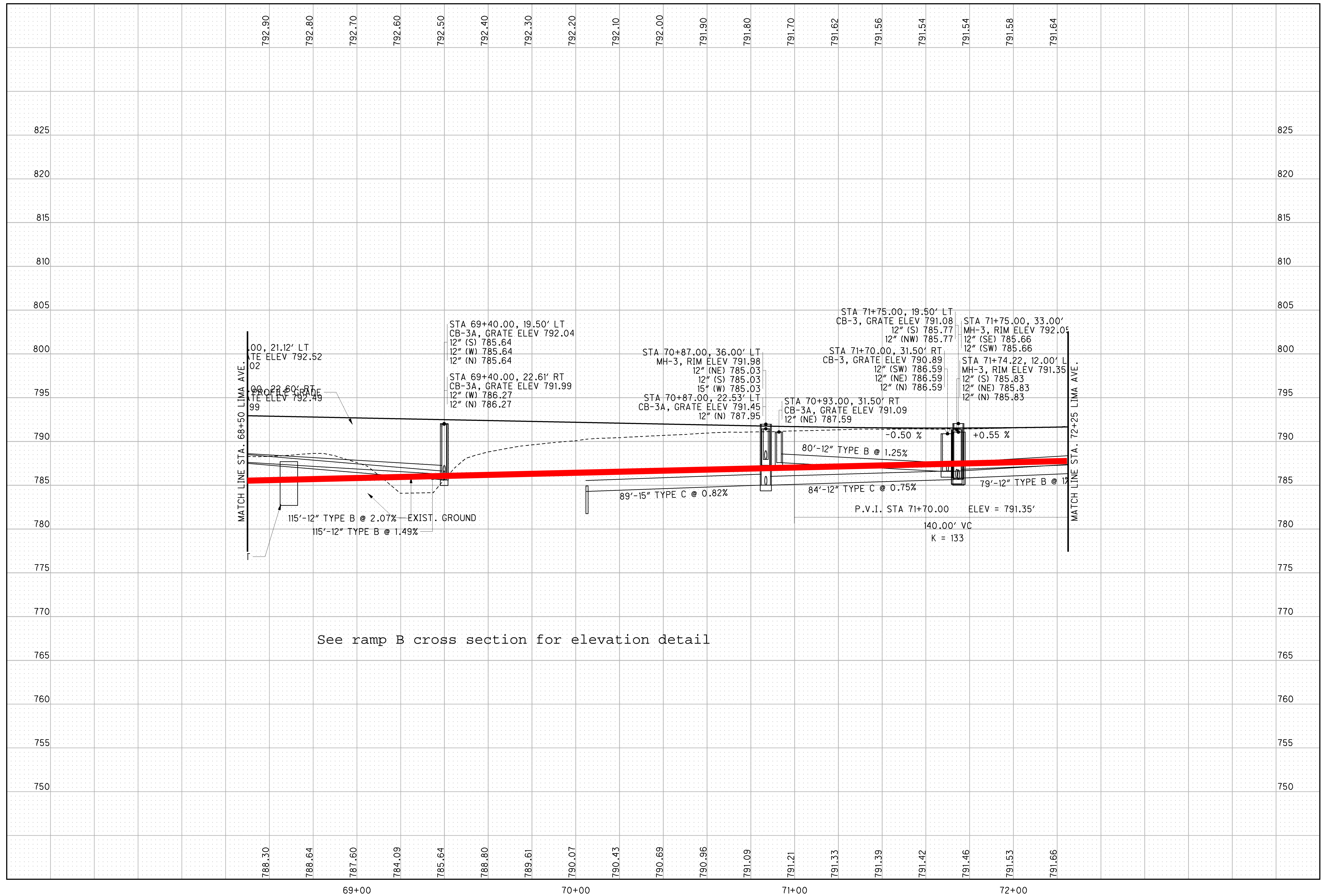


PLAN - LIMA AVE.
STA. 68+50 TO STA. 72+25

HAN-75-14.39

402
842

T:\Projects\HAN\87005\roadway\sheets\87005GP205.dgn 30-SEP-2013 10:03PM reddeni



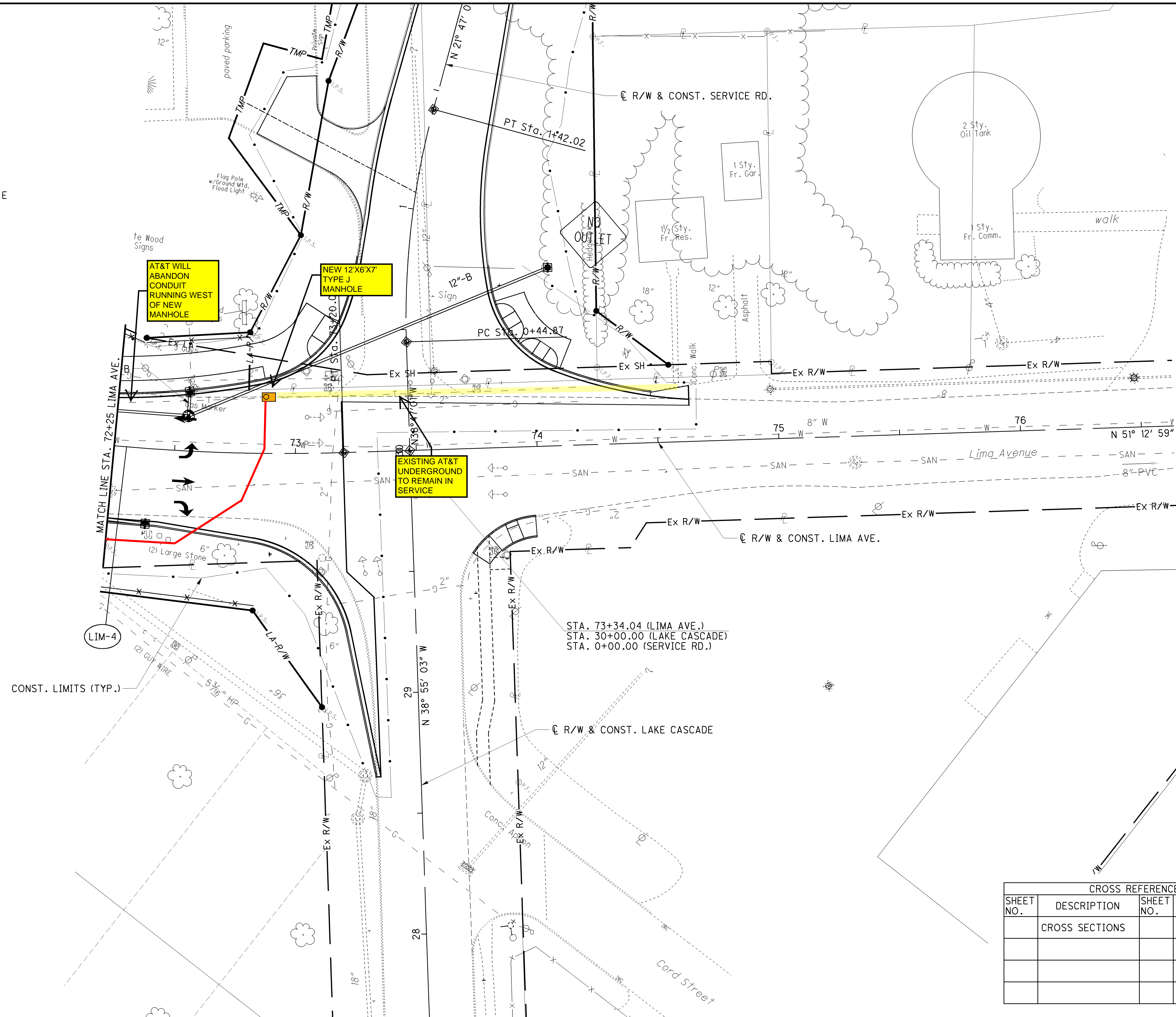
See ramp B cross section for elevation detail

CALCULATED
CHECKED

**PROFILE - LIMA AVE.
STA. 68+50 TO STA. 72+25**

HAN-75-14.39

CURVE LIM-4
 P.I. Sta. 71+15.20
 $\Delta = 29^\circ 23' 38''$ (LT)
 $D_c = 7^\circ 30' 00''$
 $R = 763.94'$
 $T = 200.37'$
 $L = 391.92'$
 $E = 25.84'$
 $C = 387.63'$
 C.B. = N 65° 54' 48" E
 $e_d = NC$



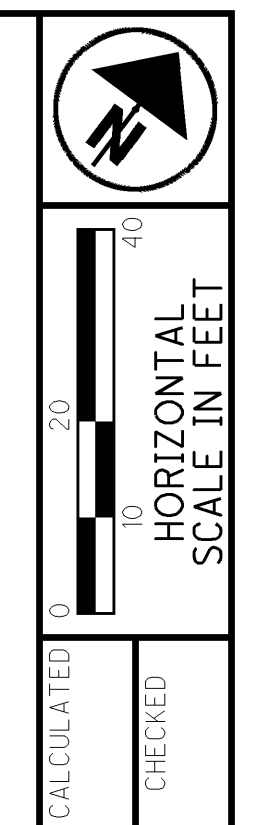
AT&T WILL ABANDON CONDUIT RUNNING WEST OF NEW MANHOLE

NEW 12'X6'X7' TYPE J MANHOLE

EXISTING AT&T UNDERGROUND TO REMAIN IN SERVICE

STA. 73+34.04 (LIMA AVE.)
 STA. 30+00.00 (LAKE CASCADE)
 STA. 0+00.00 (SERVICE RD.)

CROSS REFERENCES			
SHEET NO.	DESCRIPTION	SHEET NO.	DESCRIPTION
	CROSS SECTIONS		
			ESTIMATED QUANTITIES

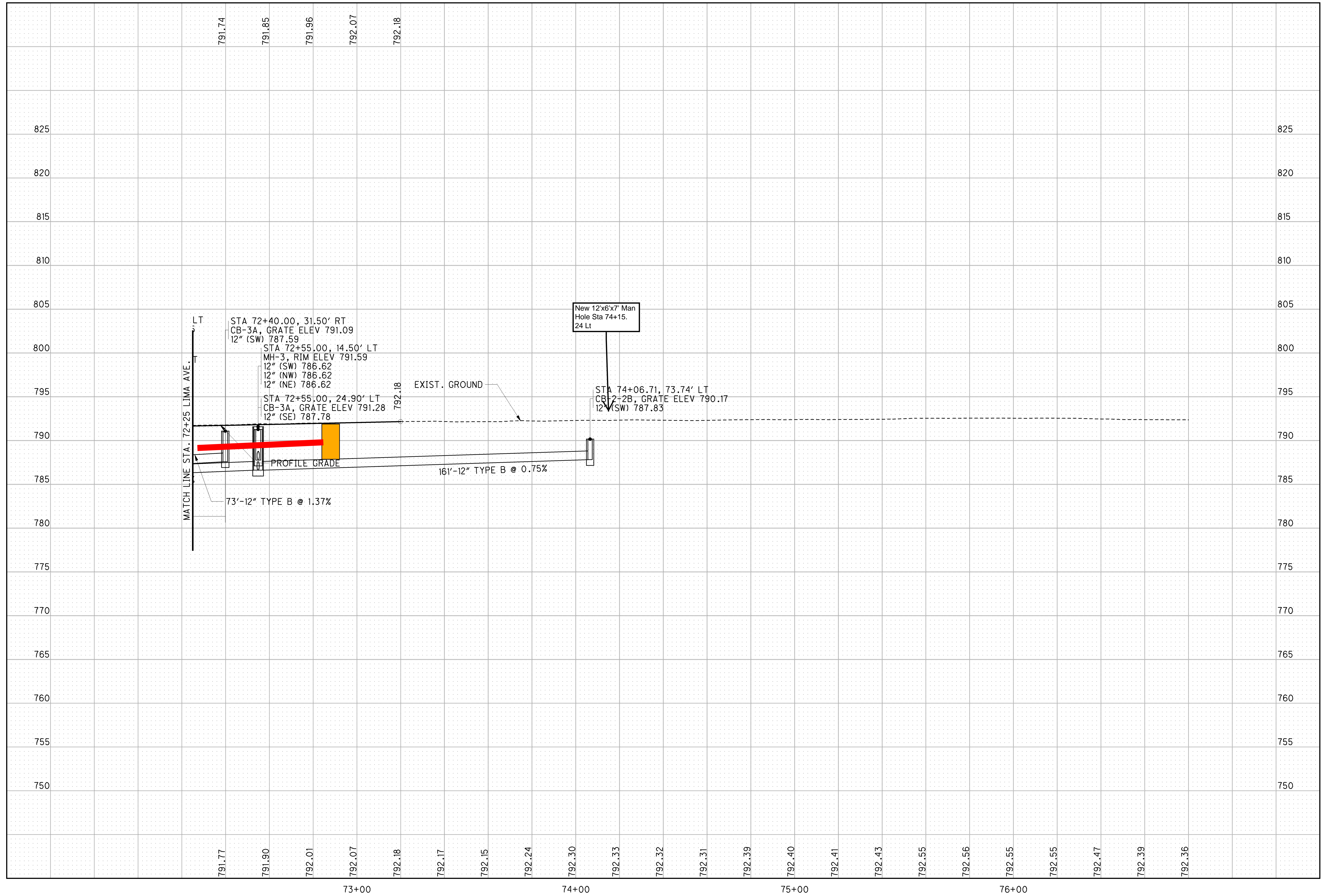


PLAN - LIMA AVE.
 STA. 72+25 TO END WORK

HAN-75-14.39

404
 842

T:\Projects\HAN\87005\roadway\sheet\87005GP206.dgn 30-SEP-2013 10:04PM reddeni



CALCULATED
CHECKED

**PROFILE - LIMA AVE.
STA. 72+25 TO END WORK**

HAN-75-14.39

405
842