

CALCULATED
MCK
CHECKED
ABS

0 10 20
HORIZONTAL
SCALE IN FEET

CURVE LIM-1
 P.I. Sta. 57+37.36
 $\Delta = 31^\circ 53' 22''$ (LT)
 $D_c = 7^\circ 30' 00''$
 $R = 763.94'$
 $T = 218.26'$
 $L = 425.19'$
 $E = 30.57'$
 $C = 419.73'$
 C.B. = $N 36^\circ 06' 18'' E$
 $e_d = NC$

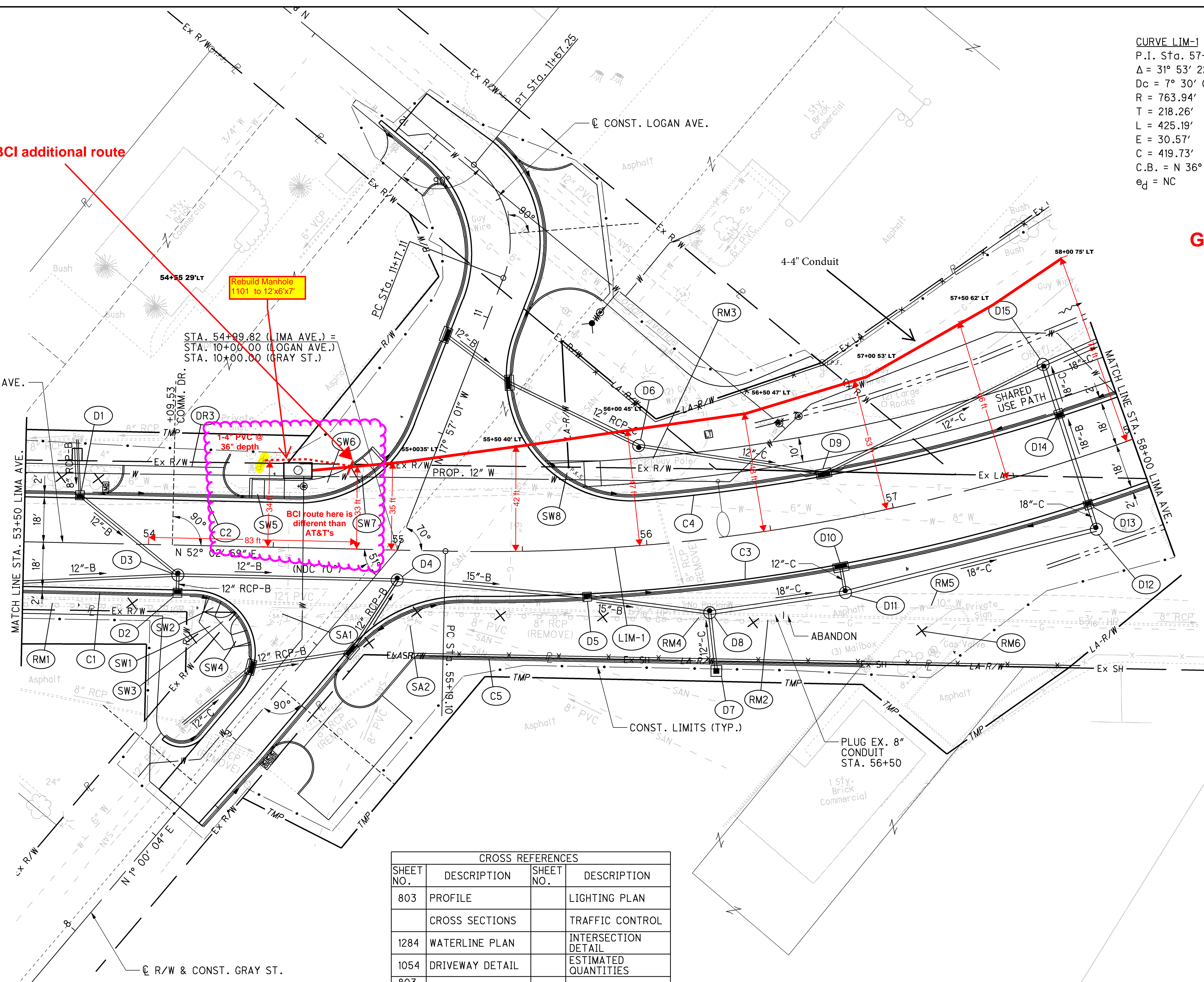
Good

BCI additional route

Rebuild Manhole
1101 to 12x6x7

STA. 54+99.82 (LIMA AVE.) =
 STA. 10+00.00 (LOGAN AVE.)
 STA. 10+00.00 (GRAY ST.)

BCI route here is
different than
AT&T's



PLAN - LIMA AVE.
 STA. 53+50 TO STA. 58+00

HAN-75-14.39

802
2034

CROSS REFERENCES			
SHEET NO.	DESCRIPTION	SHEET NO.	DESCRIPTION
803	PROFILE		LIGHTING PLAN
	CROSS SECTIONS		TRAFFIC CONTROL
1284	WATERLINE PLAN		INTERSECTION DETAIL
1054	DRIVEWAY DETAIL		ESTIMATED QUANTITIES
803	STORM PROFILE	1284	
	LOGAN AVE. PLAN & PROFILE	1284	
	GRAY ST. PLAN & PROFILE	1284	

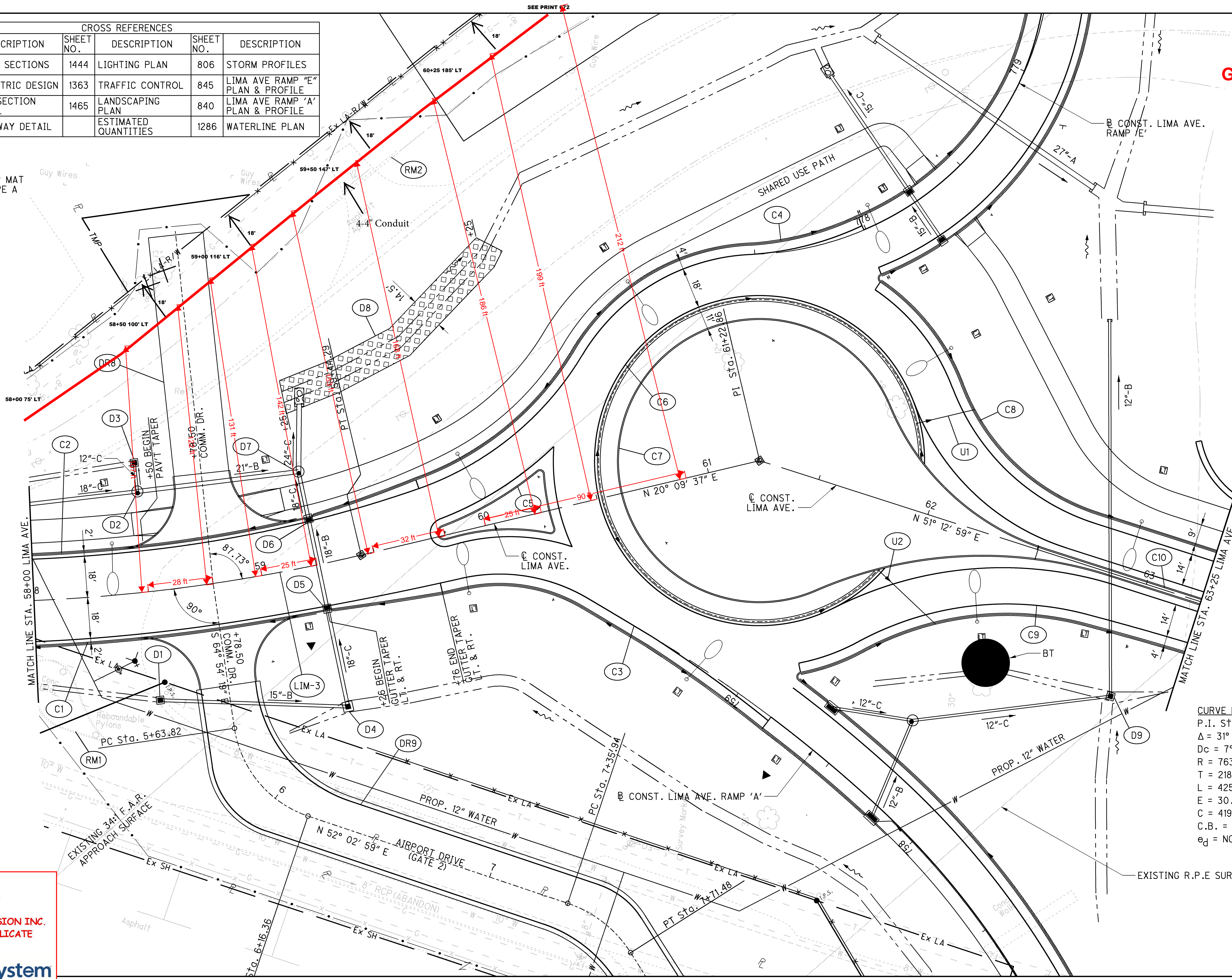
21-AUG-2014 11:33AM reddenj
 5:\roadway\sheets\87005GP202.dgn

CONFIDENTIAL AND PROPRIETARY
 PROPERTY OF BUCKEYE CABLEVISION INC.
 DO NOT DISTRIBUTE OR DUPLICATE

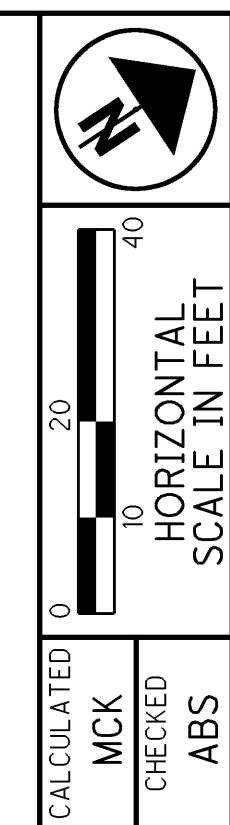
CROSS REFERENCES					
SHEET NO.	DESCRIPTION	SHEET NO.	DESCRIPTION	SHEET NO.	DESCRIPTION
	CROSS SECTIONS	1444	LIGHTING PLAN	806	STORM PROFILES
15	GEOMETRIC DESIGN	1363	TRAFFIC CONTROL	845	LIMA AVE RAMP "E" PLAN & PROFILE
1067	INTERSECTION DETAIL	1465	LANDSCAPING PLAN	840	LIMA AVE RAMP "A" PLAN & PROFILE
1054	DRIVEWAY DETAIL		ESTIMATED QUANTITIES	1286	WATERLINE PLAN

LEGEND

DEP MAT TYPE A



Good



CALCULATED MCK CHECKED ABS
PLAN - LIMA AVE.
STA. 58+00 TO STA. 63+25

CURVE LIM-1
 P.I. Sta. 57+37.36
 $\Delta = 31^\circ 53' 22''$ (LT)
 $D_c = 7^\circ 30' 00''$
 $R = 763.94'$
 $T = 218.26'$
 $L = 425.19'$
 $E = 30.57'$
 $C = 419.73'$
 $C.B. = N 36^\circ 06' 18'' E$
 $P_a = NC$

HAN-75-14.39
 805
 2034

5:\roadway\sheets\87005GP203.dgn 21-AUG-2014 1:33AM reddenj

CONFIDENTIAL AND PROPRIETARY
 PROPERTY OF BUCKEYE CABLEVISION INC.
 DO NOT DISTRIBUTE OR DUPLICATE

Good

SEE PRINT 805

PHASE II ESA SITE 4
 STA. 758+64.82 (US 68/SR 15)
 STA. 63+83.66 (LIMA AVE.)

NEW 12"x6"x7"
 MH 780




NEW 12"x6"x7"
 MH 791

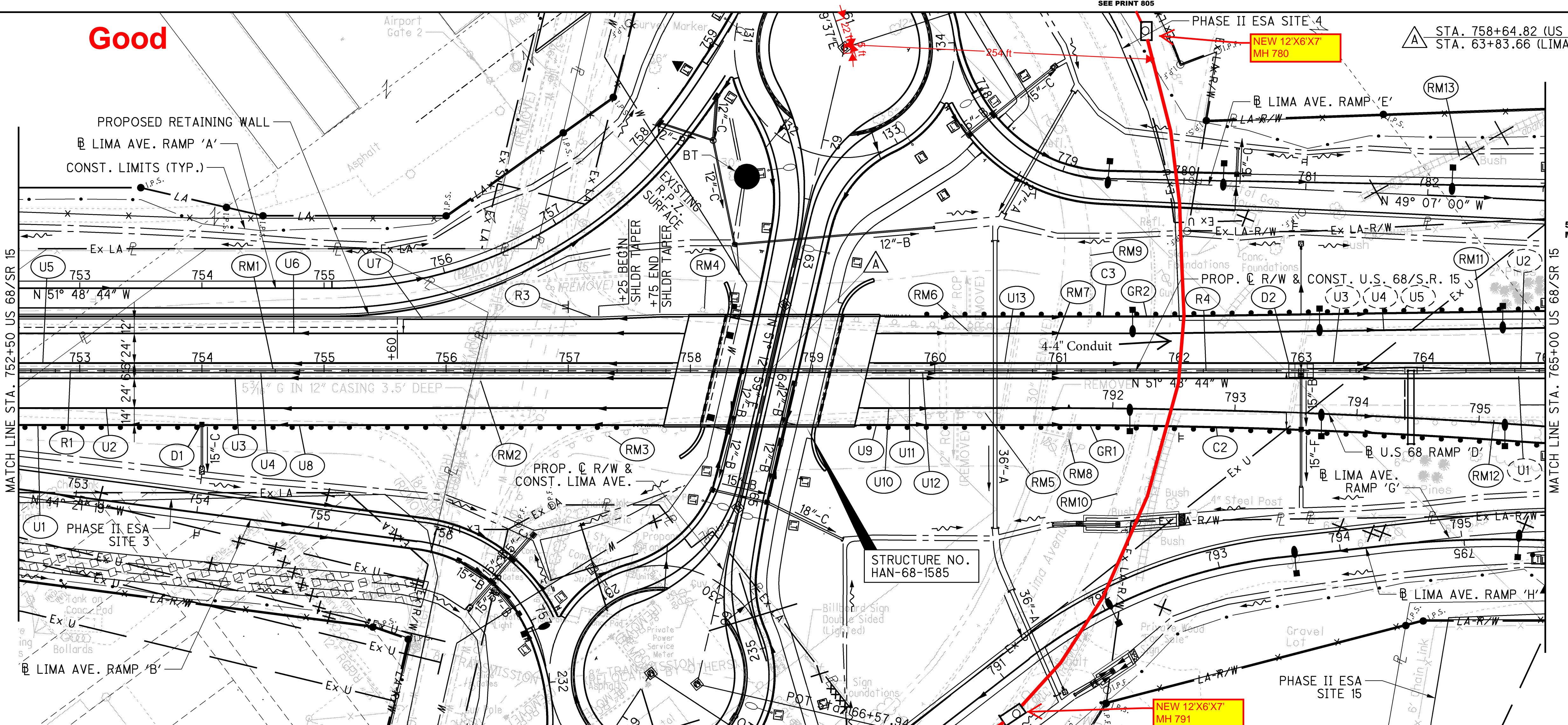
STRUCTURE NO.
 HAN-68-1585

SEE PRINT
 857

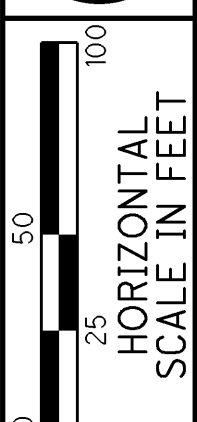
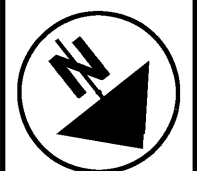
FOR PROFILE SEE SHEET 673

LEGEND

-  DEP MAT TYPE A
-  POTENTIAL INDIANA BAT ROOST TREE
-  SEE ADJACENT SHEET



CROSS REFERENCES			
SHEET NO.	DESCRIPTION	SHEET NO.	DESCRIPTION
	CROSS SECTIONS	1444	LIGHTING PLAN
840	LIMA AVE. RAMP 'A' PLAN & PROFILE	1359	TRAFFIC CONTROL
842	LIMA AVE. RAMP 'B' PLAN & PROFILE	1225	CULVERT DETAIL
808	LIMA AVE. PLAN & PROFILE	1696	HAN-68-1585
720	U.S. 68 RAMP 'D' PLAN & PROFILE	434	UNDERDRAIN SUB-SUMMARY
845	LIMA AVE. RAMP 'E' PLAN & PROFILE		STORM PROFILE
1247	RETAINING WALL PLAN	674	ESTIMATED QUANTITIES
1084	PAVEMENT DETAIL		



CALCULATED
 ACF
 CHECKED
 ABS

PLAN AND PROFILE - US 68 / SR 15
 STA. 752+50 TO STA. 765+00

HAN-75-14.39

672
 2034

\roadway\sheets\87005GP104.dgn 21-AUG-2014 1:18AM redderj

CONFIDENTIAL AND PROPRIETARY
 PROPERTY OF BUCKEYE CABLEVISION INC.
 DO NOT DISTRIBUTE OR DUPLICATE



753+00 754+00 755+00 756+00 757+00 758+00 759+00 760+00 761+00 762+00 763+00 764+00 765+00

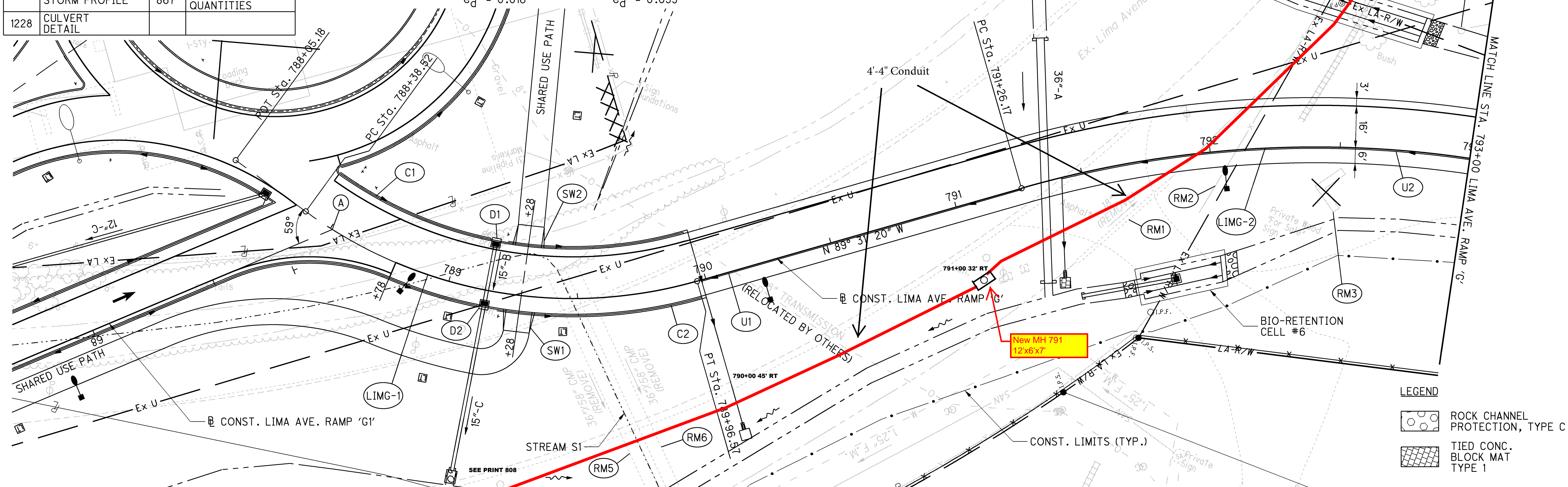
CROSS REFERENCES					
SHEET NO.	DESCRIPTION	SHEET NO.	DESCRIPTION	SHEET NO.	DESCRIPTION
	CROSS SECTIONS	1446	LIGHTING PLAN	456	BIO RETENTION CELL DETAIL
808	LIMA AVENUE PLAN & PROFILE	1359	TRAFFIC CONTROL	1065	GRADING PLAN
866	LIMA AVE. RAMP G1 PLAN & PROFILE	437	UNDERDRAIN SUBSUMMARY	1068	INTERSECTION DETAIL
	STORM PROFILE	867	ESTIMATED QUANTITIES		
1228	CULVERT DETAIL				

LIMG-1
 P.I. Sta. 789+23.49
 $\Delta = 52^\circ 09' 18''$ (LT)
 $Dc = 33^\circ 00' 00''$
 $R = 173.62'$
 $T = 84.97'$
 $L = 158.05'$
 $E = 19.68'$
 $C = 152.64'$
 C.B. = N 63° 26' 42" W
 $e_d = 0.016$

LIMG-2
 P.I. Sta. 792+40.76
 $\Delta = 31^\circ 17' 06''$ (RT)
 $Dc = 14^\circ 00' 00''$
 $R = 409.26'$
 $T = 114.59'$
 $L = 223.46'$
 $E = 15.74'$
 $C = 220.70'$
 C.B. = N 73° 52' 47" W
 $e_d = 0.059$

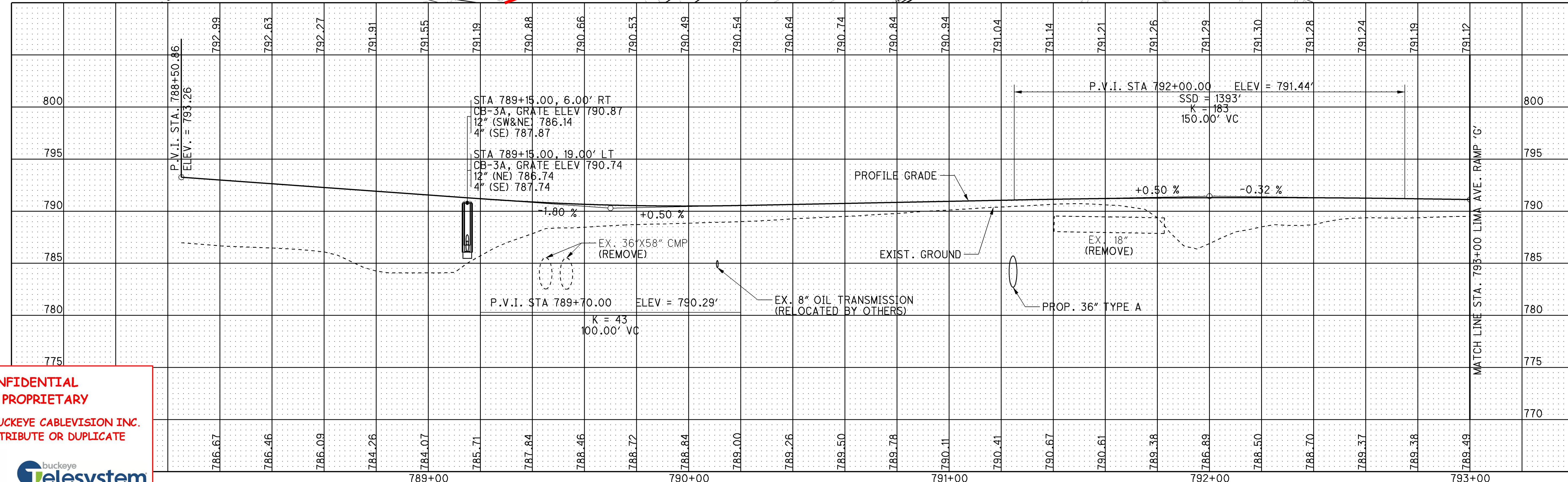
(A) STA. 788+50.86 (LIMA AVE. RAMP G)
 STA. 67+00.18 (LIMA AVE. RAMP G)

Good



LEGEND

	ROCK CHANNEL PROTECTION, TYPE C
	TIED CONC. BLOCK MAT TYPE 1

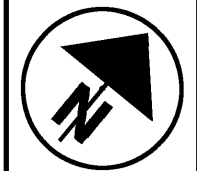


21-AUG-2014 1:37AM reddenj
 \roadway\sheet\87005GP224.dgn

CONFIDENTIAL AND PROPRIETARY
 PROPERTY OF BUCKEYE CABLEVISION INC.
 DO NOT DISTRIBUTE OR DUPLICATE

HAN-75-14.39
PLAN AND PROFILE - LIMA AVE. RAMP 'G'
STA. 788+55.74 TO STA. 793+00

CALCULATED MCK CHECKED ABS
 HORIZONTAL SCALE IN FEET
 0 20 40
 857
 2034



0 20 40
HORIZONTAL
SCALE IN FEET

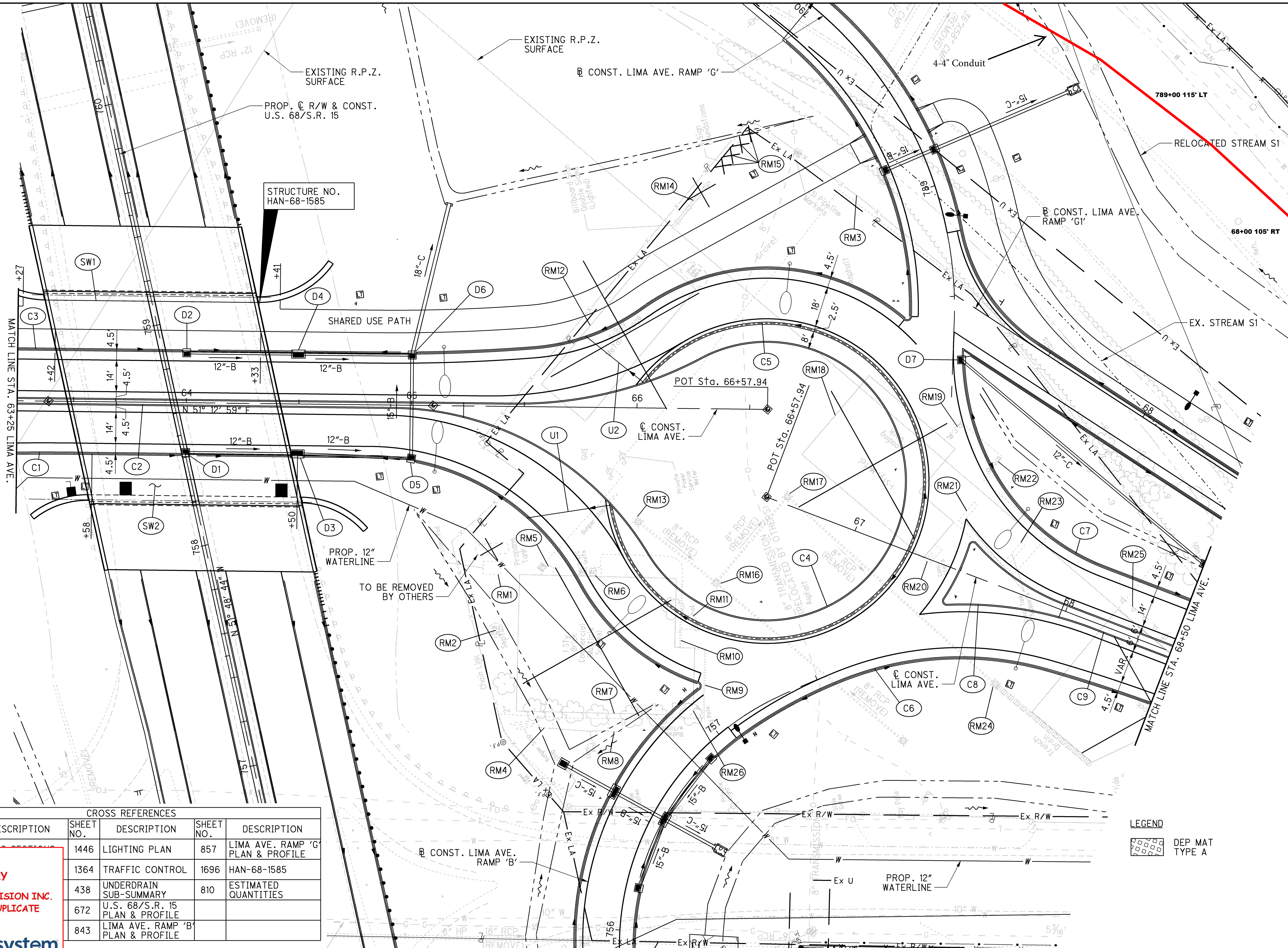
CALCULATED
MCK
CHECKED
ABS

SEE
PRINT 811

PLAN - LIMA AVE.
STA. 63+25 TO STA. 68+50

HAN-75-14.39

808
2034



STRUCTURE NO.
HAN-68-1585

MATCH LINE STA. 63+25 LIMA AVE.

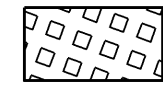
LEGEND
DEP MAT
TYPE A

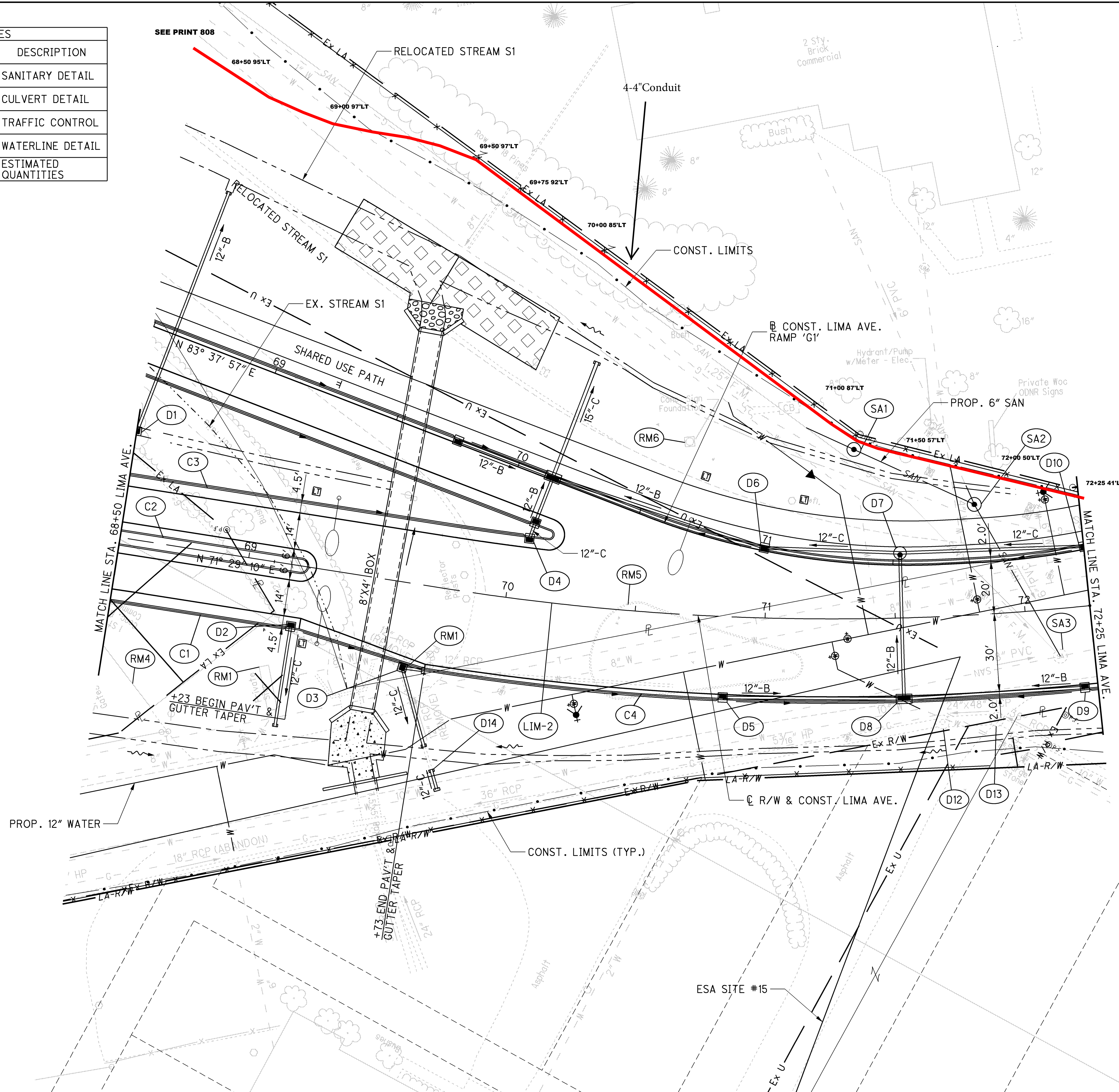
CROSS REFERENCES					
SHEET NO.	DESCRIPTION	SHEET NO.	DESCRIPTION	SHEET NO.	DESCRIPTION
1446	LIGHTING PLAN	857	LIMA AVE. RAMP 'G' PLAN & PROFILE		
1364	TRAFFIC CONTROL	1696	HAN-68-1585		
438	UNDERDRAIN SUB-SUMMARY	810	ESTIMATED QUANTITIES		
672	U.S. 68/S.R. 15 PLAN & PROFILE				
843	LIMA AVE. RAMP 'B' PLAN & PROFILE				

CONFIDENTIAL AND PROPRIETARY
 PROPERTY OF BUCKEYE CABLEVISION INC.
 DO NOT DISTRIBUTE OR DUPLICATE

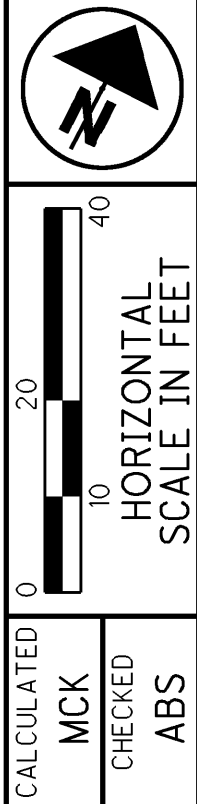
S:\roadway\sheets\87005GP204.dgn 21-AUG-2014 1:34 AM reddeni

CROSS REFERENCES			
SHEET NO.	DESCRIPTION	SHEET NO.	DESCRIPTION
	CROSS SECTIONS	1281	SANITARY DETAIL
866	LIMA AVE. RAMP 'G1' PLAN & PROFILE	1229	CULVERT DETAIL
1069	INTERSECTION DETAIL	1365	TRAFFIC CONTROL
	STORM PROFILE	1290	WATERLINE DETAIL
1446	LIGHTING PLAN	815	ESTIMATED QUANTITIES

LEGEND
 DEP MAT TYPE A



Good



PLAN - LIMA AVE.
 STA. 68+50 TO STA. 72+25


HAN-75-14.39

811
 2034

CURVE LIM-2
 P.I. Sta. 71+47.83
 $\Delta = 20^\circ 16' 11''$ (LT)
 $D_c = 6^\circ 00' 00''$
 $R = 954.93'$
 $T = 170.70'$
 $L = 337.83'$
 $E = 15.14'$
 $C = 336.07'$
 $C.B. = N 61^\circ 21' 04'' E$
 $P_a = NC$

21-AUG-2014 1:34 AM reddenj
 S:\roadway\sheets\87005GP205.dgn

CONFIDENTIAL AND PROPRIETARY
 PROPERTY OF BUCKEYE CABLEVISION INC.
 DO NOT DISTRIBUTE OR DUPLICATE



CURVE LIM-2
 P.I. Sta. 71+47.83
 $\Delta = 20^\circ 16' 11''$ (LT)
 $D_c = 6^\circ 00' 00''$
 $R = 954.93'$
 $T = 170.70'$
 $L = 337.83'$
 $E = 15.14'$
 $C = 336.07'$
 C.B. = $N 61^\circ 21' 04'' E$
 $e_d = NC$

BCI additional
 build/route

BUILD NEW MH 944
 12'X6'X7'

STA. 73+34.62 (LIMA AVE.)
 STA. 30+00.00 (LAKE CASCADE)
 STA. 0+00.00 (SERVICE RD.)

BCI to rise on pole

CALCULATED
 MCK
 CHECKED
 ABS

0 20 40
 HORIZONTAL
 SCALE IN FEET

PLAN - LIMA AVE.
 STA. 72+25 TO END WORK

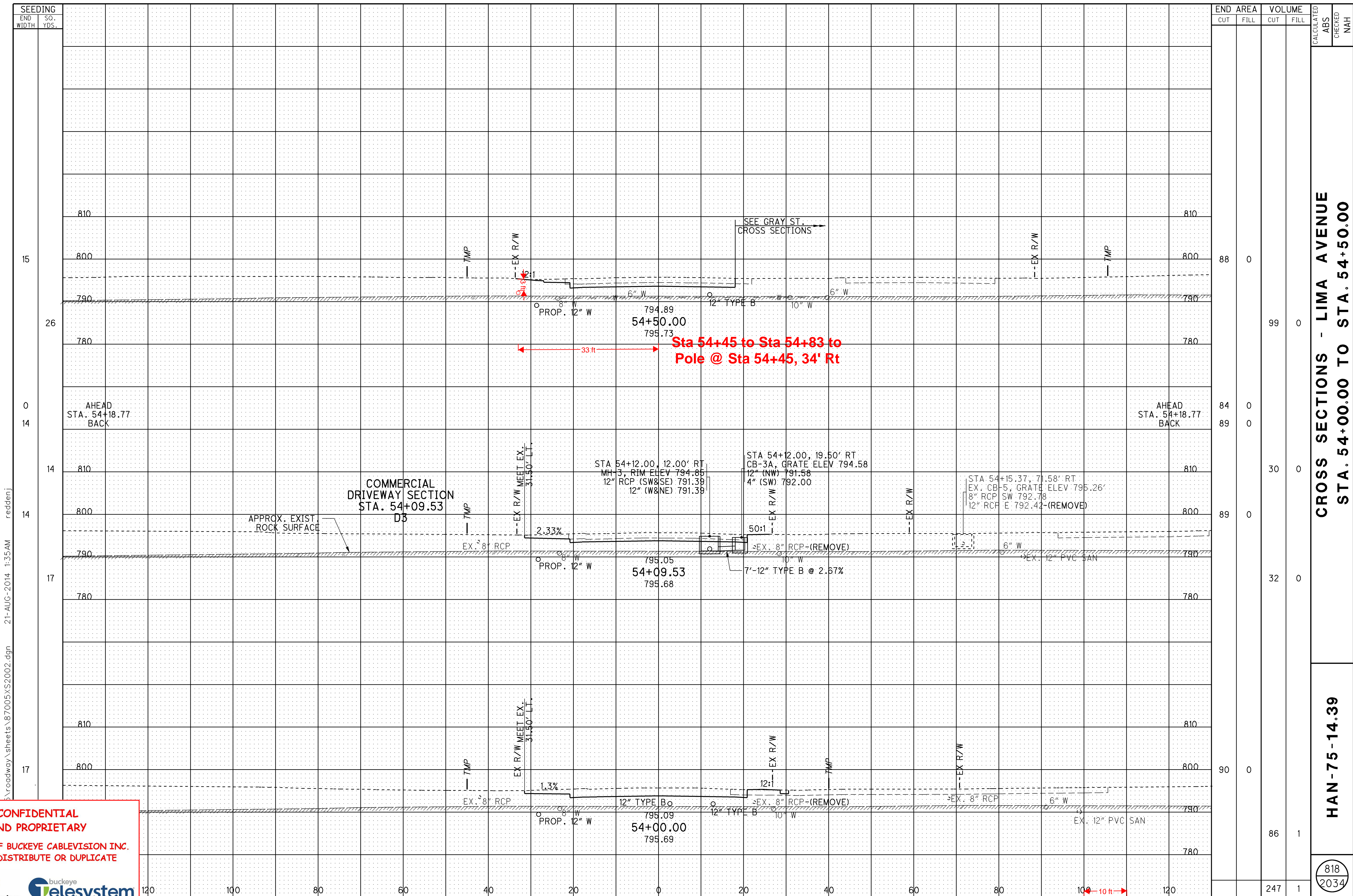
HAN-75-14.39

813
 2034

CROSS REFERENCES			
SHEET NO.	DESCRIPTION	SHEET NO.	DESCRIPTION
	CROSS SECTIONS	814	STORM PROFILE
936	SERVICE RD. PLAN & PROFILE	1365	TRAFFIC CONTROL
1069	INTERSECTION DETAIL	1446	LIGHTING PLAN
1290	WATERLINE PLAN	815	ESTIMATED QUANTITIES

CONFIDENTIAL AND PROPRIETARY
 PROPERTY OF BUCKEYE CABLEVISION INC.
 DO NOT DISTRIBUTE OR DUPLICATE

5:\roadway\sheets\87005GP206.dgn 21-AUG-2014 1:34 AM reddenj





CROSS SECTIONS - LIMA AVENUE
STA. 54+00.00 TO STA. 54+50.00

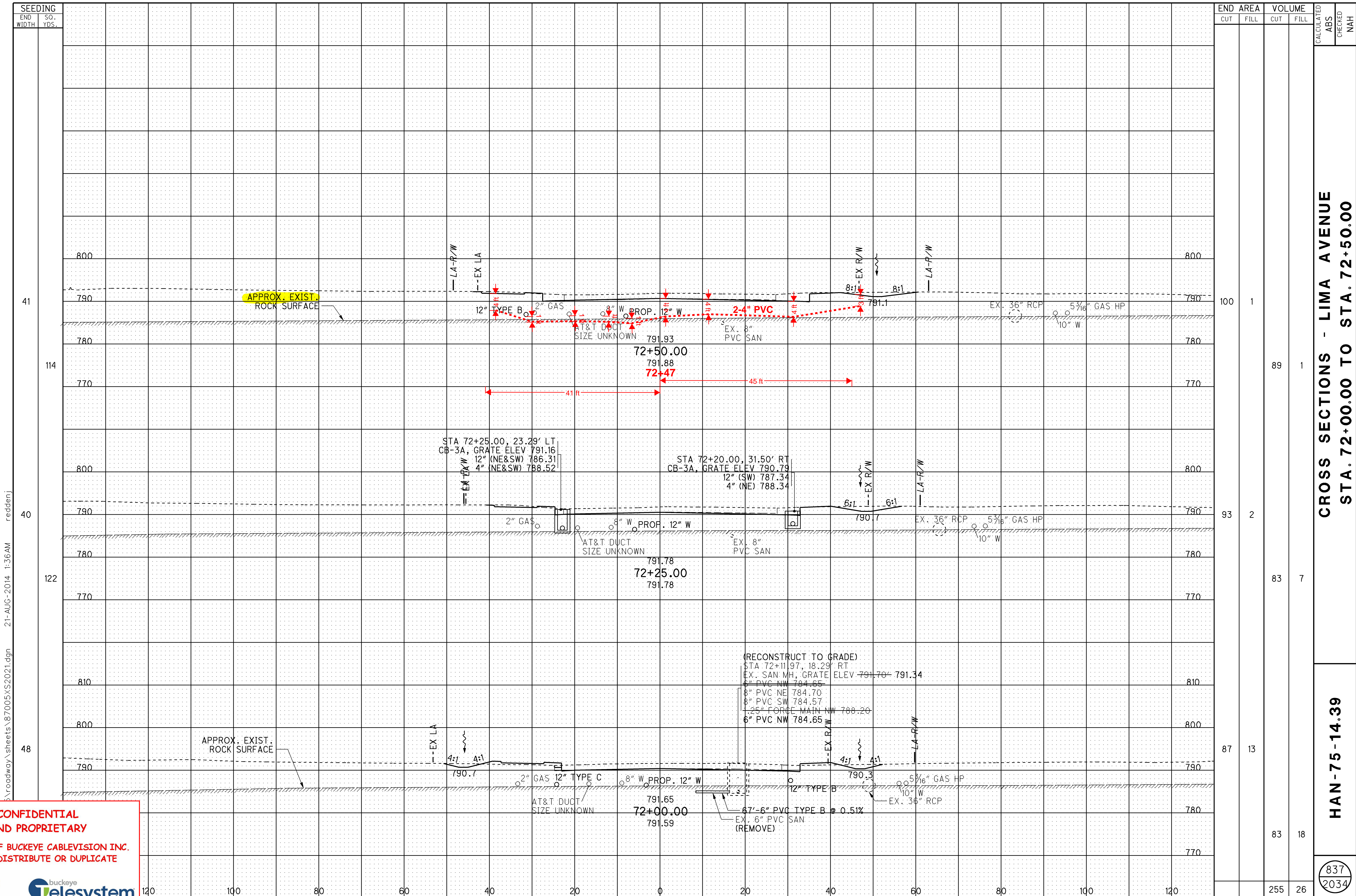
HAN-75-14.39

818
2034

D:\roadway\sheets\87005\XS2002.dgn 21-AUG-2014 1:35 AM redde

CONFIDENTIAL AND PROPRIETARY
 PROPERTY OF BUCKEYE CABLEVISION INC.
 DO NOT DISTRIBUTE OR DUPLICATE



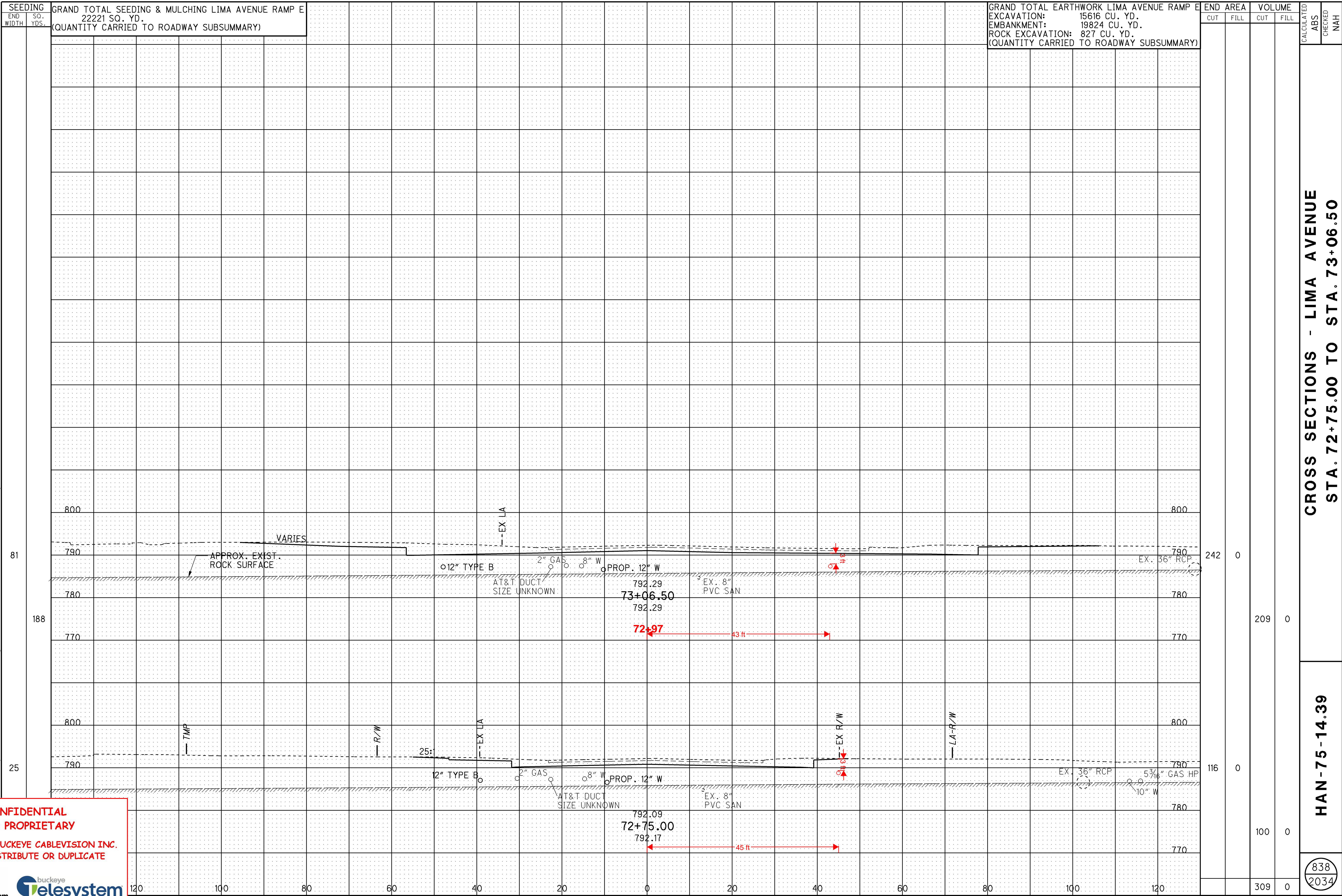
CROSS SECTIONS - LIMA AVENUE
STA. 72+00.00 TO STA. 72+50.00

HAN-75-14.39

837
 2034

21-AUG-2014 1:36AM redderj

CONFIDENTIAL
 AND PROPRIETARY
 PROPERTY OF BUCKEYE CABLEVISION INC.
 DO NOT DISTRIBUTE OR DUPLICATE



SEEDING
 END SO. GRAND TOTAL SEEDING & MULCHING LIMA AVENUE RAMP E
 WIDTH YDS. 22221 SQ. YD.
 (QUANTITY CARRIED TO ROADWAY SUBSUMMARY)

GRAND TOTAL EARTHWORK LIMA AVENUE RAMP E
 EXCAVATION: 15616 CU. YD.
 EMBANKMENT: 19824 CU. YD.
 ROCK EXCAVATION: 827 CU. YD.
 (QUANTITY CARRIED TO ROADWAY SUBSUMMARY)

END AREA		VOLUME		CALCULATED ABS	CHECKED NAH
CUT	FILL	CUT	FILL		
242	0	209	0		
116	0	100	0		
		309	0		

CROSS SECTIONS - LIMA AVENUE
 STA. 72+75.00 TO STA. 73+06.50

HAN-75-14.39

838
 2034

5:\roadway\sheets\87005XS2022.dgn 21-AUG-2014 1:36AM redderj
 81
 188
 25

CONFIDENTIAL AND PROPRIETARY
 PROPERTY OF BUCKEYE CABLEVISION INC.
 DO NOT DISTRIBUTE OR DUPLICATE