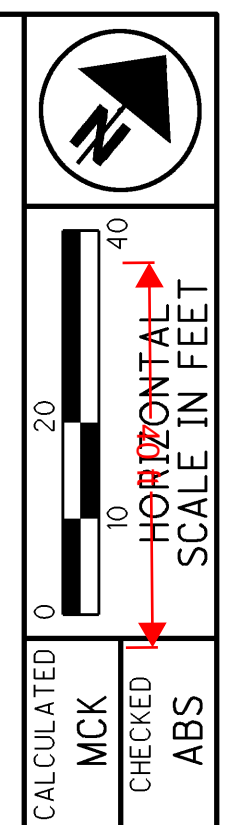


T:\Projects\HAN\87005\roadway\sheet\87005GP202.dgn 21-AUG-2014 1:33AM redderj

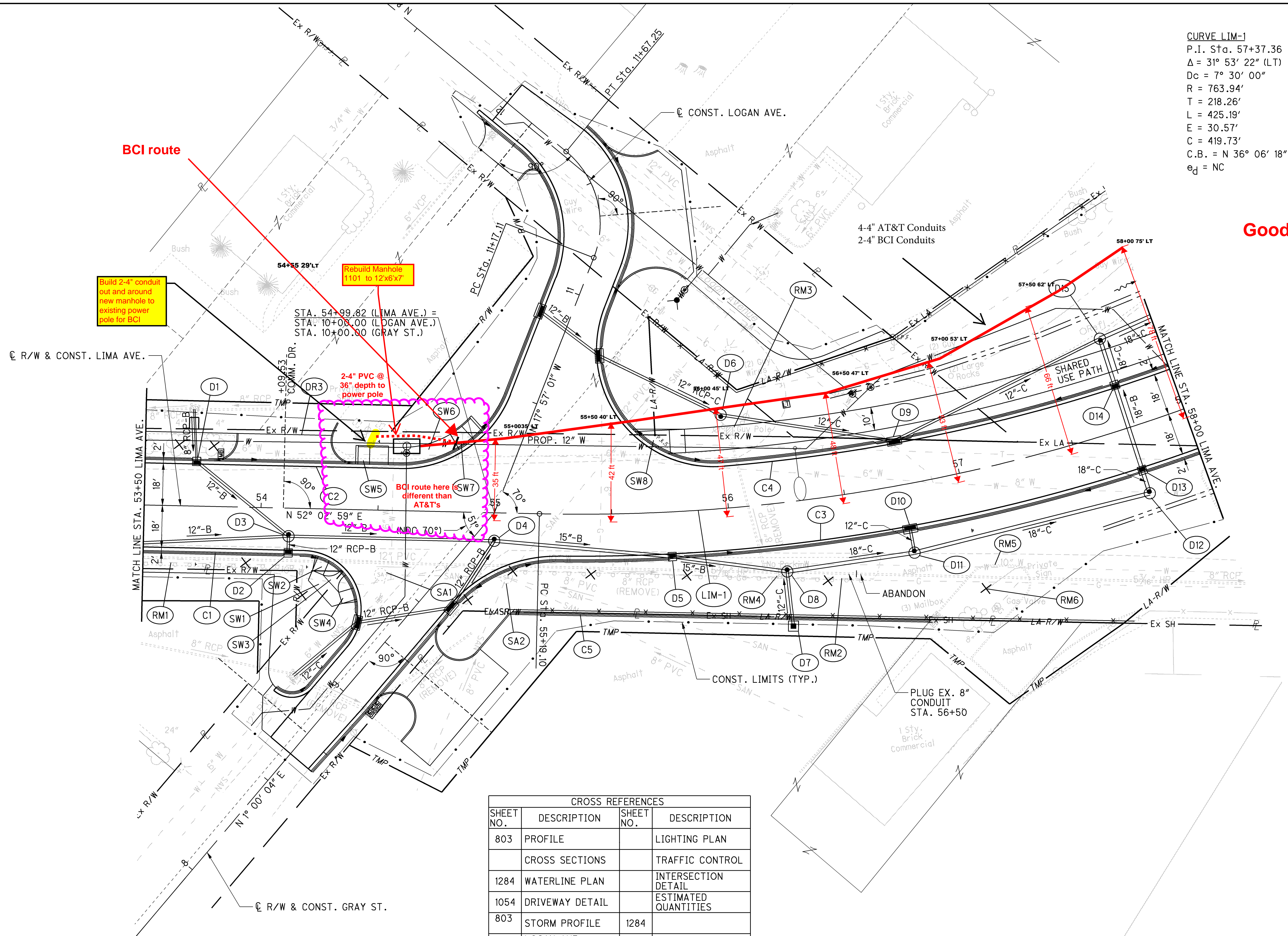


CURVE LIM-1
 P.I. Sta. 57+37.36
 $\Delta = 31^\circ 53' 22''$ (LT)
 $D_c = 7^\circ 30' 00''$
 $R = 763.94'$
 $T = 218.26'$
 $L = 425.19'$
 $E = 30.57'$
 $C = 419.73'$
 $C.B. = N 36^\circ 06' 18'' E$
 $e_d = NC$

PLAN - LIMA AVE.
STA. 53+50 TO STA. 58+00


HAN-75-14.39

802
2034



| CROSS REFERENCES | | | |
|------------------|---------------------------|-----------|----------------------|
| SHEET NO. | DESCRIPTION | SHEET NO. | DESCRIPTION |
| 803 | PROFILE | | LIGHTING PLAN |
| | CROSS SECTIONS | | TRAFFIC CONTROL |
| 1284 | WATERLINE PLAN | | INTERSECTION DETAIL |
| 1054 | DRIVEWAY DETAIL | | ESTIMATED QUANTITIES |
| 803 | STORM PROFILE | 1284 | |
| | LOGAN AVE. PLAN & PROFILE | 1284 | |
| | GRAY ST. PLAN & PROFILE | 1284 | |


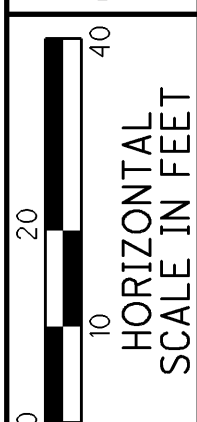
| CROSS REFERENCES | | | | | |
|------------------|---------------------|-----------|----------------------|-----------|----------------------------------|
| SHEET NO. | DESCRIPTION | SHEET NO. | DESCRIPTION | SHEET NO. | DESCRIPTION |
| | CROSS SECTIONS | 1444 | LIGHTING PLAN | 806 | STORM PROFILES |
| 15 | GEOMETRIC DESIGN | 1363 | TRAFFIC CONTROL | 845 | LIMA AVE RAMP "E" PLAN & PROFILE |
| 1067 | INTERSECTION DETAIL | 1465 | LANDSCAPING PLAN | 840 | LIMA AVE RAMP "A" PLAN & PROFILE |
| 1054 | DRIVEWAY DETAIL | | ESTIMATED QUANTITIES | 1286 | WATERLINE PLAN |

LEGEND
 DEP MAT TYPE A

New BCI 30" X 48" x 18" Hand-hole

turn up 2-4" for BCI hand hole

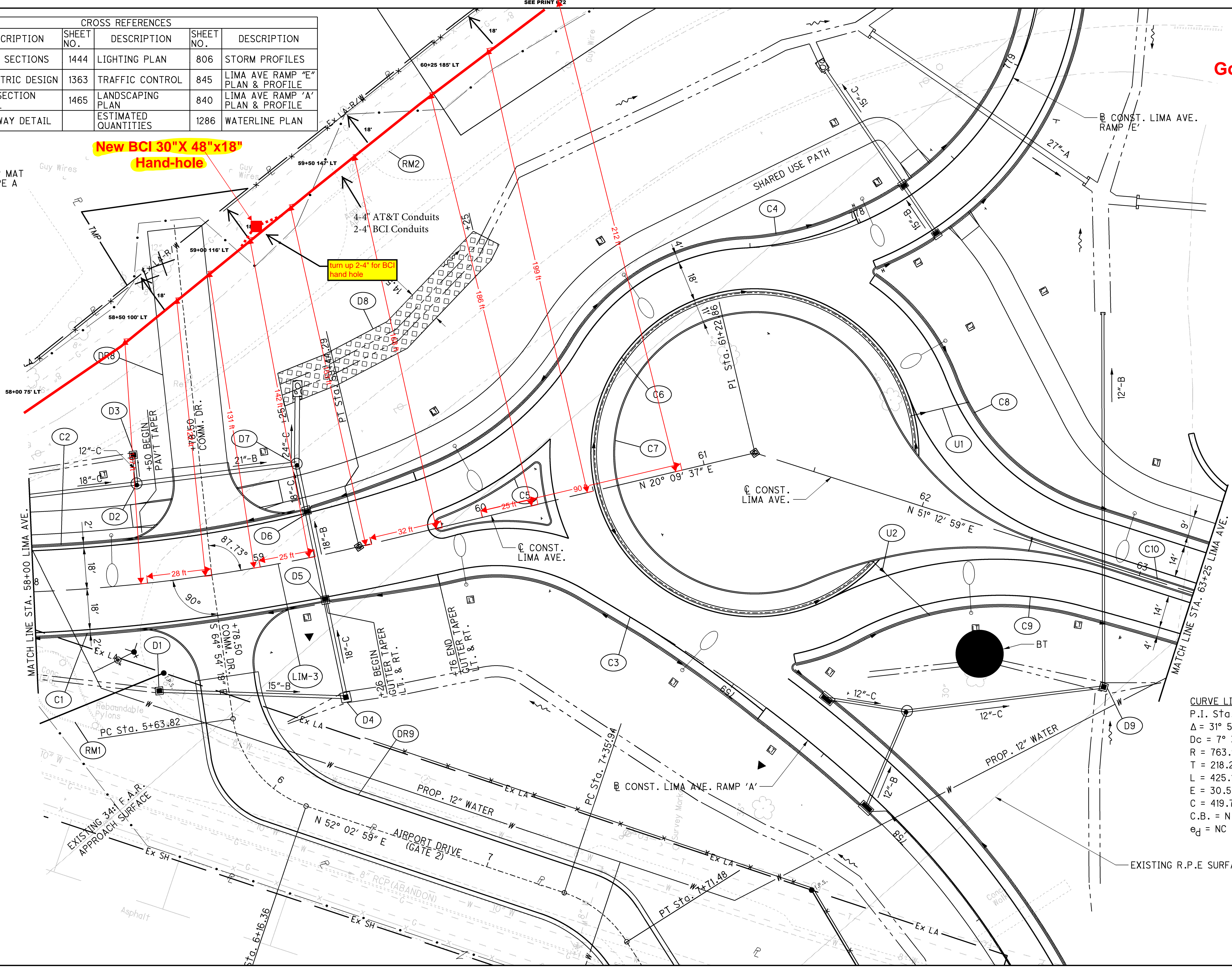
Good

CALCULATED MCK CHECKED ABS


 HORIZONTAL SCALE IN FEET

**PLAN - LIMA AVE.
 STA. 58+00 TO STA. 63+25**

HAN-75-14.39

805
2034

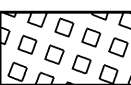




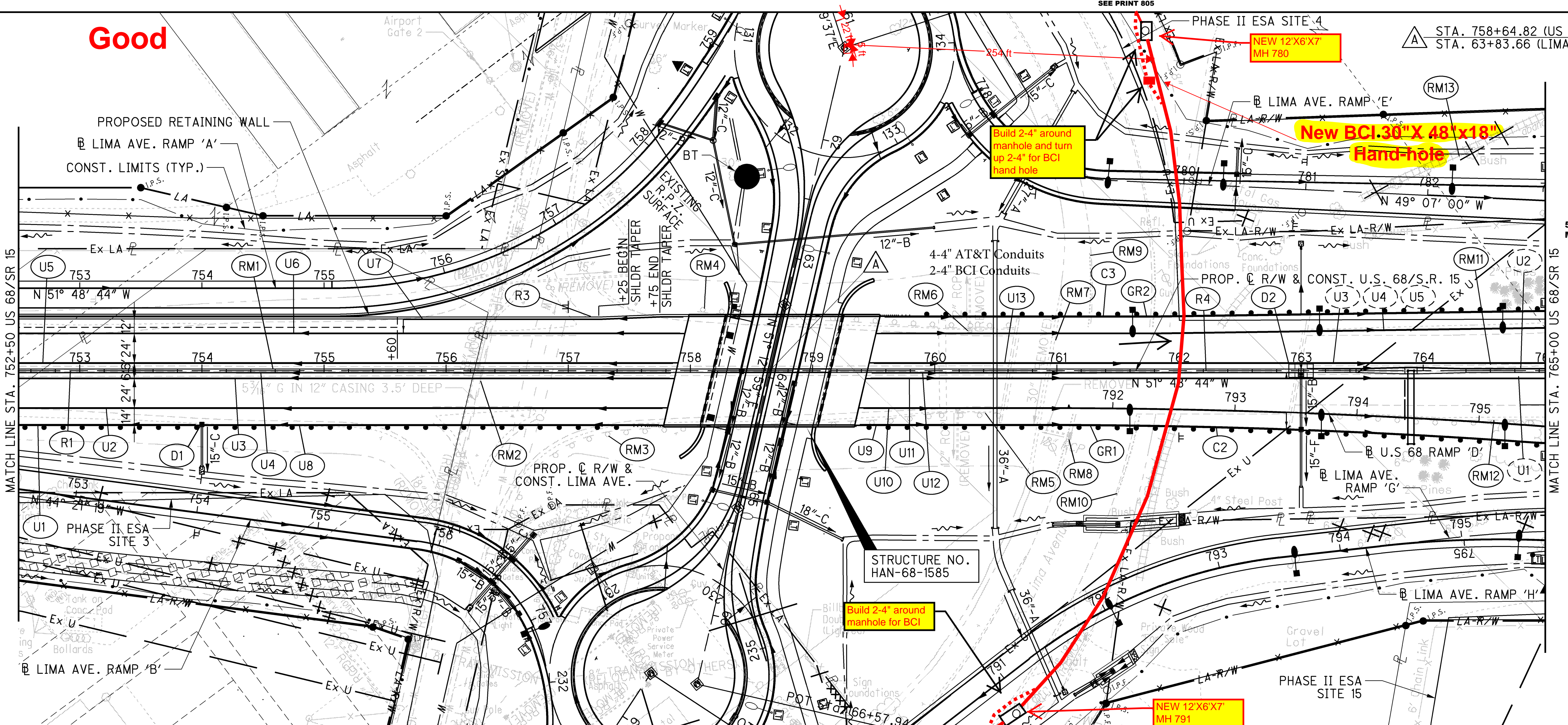
CURVE LIM-1
 P.I. Sta. 57+37.36
 $\Delta = 31^\circ 53' 22''$ (LT)
 $D_c = 7^\circ 30' 00''$
 $R = 763.94'$
 $T = 218.26'$
 $L = 425.19'$
 $E = 30.57'$
 $C = 419.73'$
 $C.B. = N 36^\circ 06' 18'' E$
 $P_a = NC$

Good

SEE PRINT 805

△ STA. 758+64.82 (US 68/SR 15)
 STA. 63+83.66 (LIMA AVE.)

- LEGEND**
-  DEP MAT TYPE A
 -  POTENTIAL INDIANA BAT ROOST TREE
 -  SEE ADJACENT SHEET



550' W-W MH-MH
 MAX ELEVATION 780'



PLAN AND PROFILE - US 68 / SR 15
 STA. 752+50 TO STA. 765+00

| CROSS REFERENCES | | | |
|------------------|-----------------------------------|-----------|------------------------|
| SHEET NO. | DESCRIPTION | SHEET NO. | DESCRIPTION |
| | CROSS SECTIONS | 1444 | LIGHTING PLAN |
| 840 | LIMA AVE. RAMP 'A' PLAN & PROFILE | 1359 | TRAFFIC CONTROL |
| 842 | LIMA AVE. RAMP 'B' PLAN & PROFILE | 1225 | CULVERT DETAIL |
| 808 | LIMA AVE. PLAN & PROFILE | 1696 | HAN-68-1585 |
| 720 | U.S. 68 RAMP 'D' PLAN & PROFILE | 434 | UNDERDRAIN SUB-SUMMARY |
| 845 | LIMA AVE. RAMP 'E' PLAN & PROFILE | | STORM PROFILE |
| 1247 | RETAINING WALL PLAN | 674 | ESTIMATED QUANTITIES |
| 1084 | PAVEMENT DETAIL | | |

FOR PROFILE SEE SHEET 673

SEE PRINT 857

T:\Projects\HAN\87005\roadway\sheets\87005GP104.dgn 21-AUG-2014 1:18AM redderj

HAN-75-14.39

672
 2034

753+00 754+00 755+00 756+00 757+00 758+00 759+00 760+00 761+00 762+00 763+00 764+00 765+00

| CROSS REFERENCES | | | | | |
|------------------|----------------------------------|-----------|-----------------------|-----------|---------------------------|
| SHEET NO. | DESCRIPTION | SHEET NO. | DESCRIPTION | SHEET NO. | DESCRIPTION |
| | CROSS SECTIONS | 1446 | LIGHTING PLAN | 456 | BIO RETENTION CELL DETAIL |
| 808 | LIMA AVENUE PLAN & PROFILE | 1359 | TRAFFIC CONTROL | 1065 | GRADING PLAN |
| 866 | LIMA AVE. RAMP G1 PLAN & PROFILE | 437 | UNDERDRAIN SUBSUMMARY | 1068 | INTERSECTION DETAIL |
| | STORM PROFILE | 867 | ESTIMATED QUANTITIES | | |
| 1228 | CULVERT DETAIL | | | | |

LIMG-1
 P.I. Sta. 789+23.49
 $\Delta = 52^\circ 09' 18''$ (LT)
 $D_c = 33^\circ 00' 00''$
 $R = 173.62'$
 $T = 84.97'$
 $L = 158.05'$
 $E = 19.68'$
 $C = 152.64'$
 C.B. = N 63° 26' 42" W
 $e_d = 0.016$

LIMG-2
 P.I. Sta. 792+40.76
 $\Delta = 31^\circ 17' 06''$ (RT)
 $D_c = 14^\circ 00' 00''$
 $R = 409.26'$
 $T = 114.59'$
 $L = 223.46'$
 $E = 15.74'$
 $C = 220.70'$
 C.B. = N 73° 52' 47" W
 $e_d = 0.059$

(A) STA. 788+50.86 (LIMA AVE. RAMP G)
 STA. 67+00.18 (LIMA AVE. RAMP G)

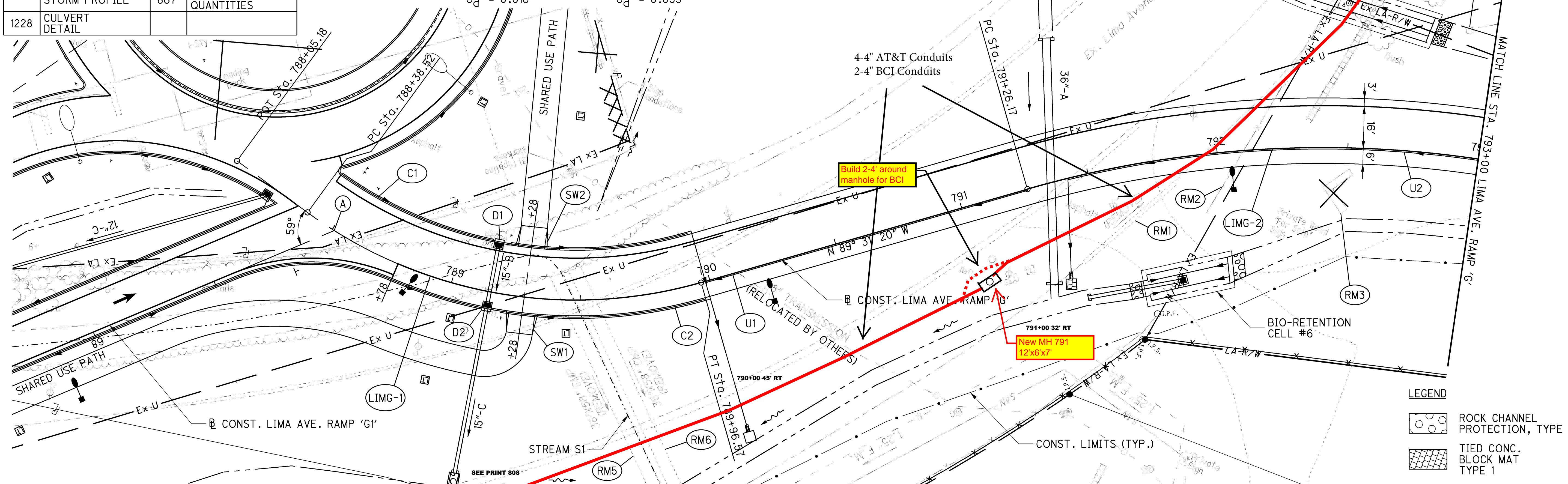
Good

Proposed location for New BCI 30"X 48"x18" Hand-hole

Turn up 2-4" for BCI hand hole

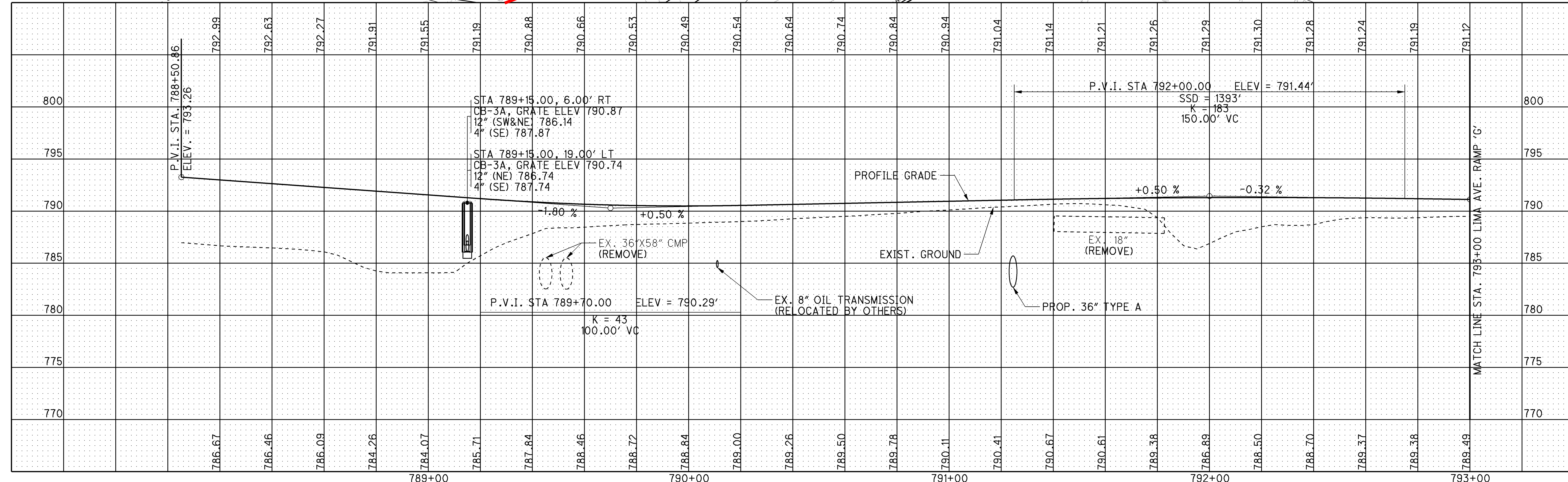
Build 2-4" around manhole for BCI

New MH 791 12x6x7



LEGEND

| | |
|--|---------------------------------|
| | ROCK CHANNEL PROTECTION, TYPE C |
| | TIED CONC. BLOCK MAT TYPE 1 |



HAN-75-14.39
PLAN AND PROFILE - LIMA AVE. RAMP 'G'
STA. 788+55.74 TO STA. 793+00

CALCULATED MCK CHECKED ABS

HORIZONTAL SCALE IN FEET

857
 2034

T:\Projects\HAN\87005\roadway\sheets\87005GP224.dgn 21-AUG-2014 1:37AM reddenj



0 20 40
HORIZONTAL SCALE IN FEET

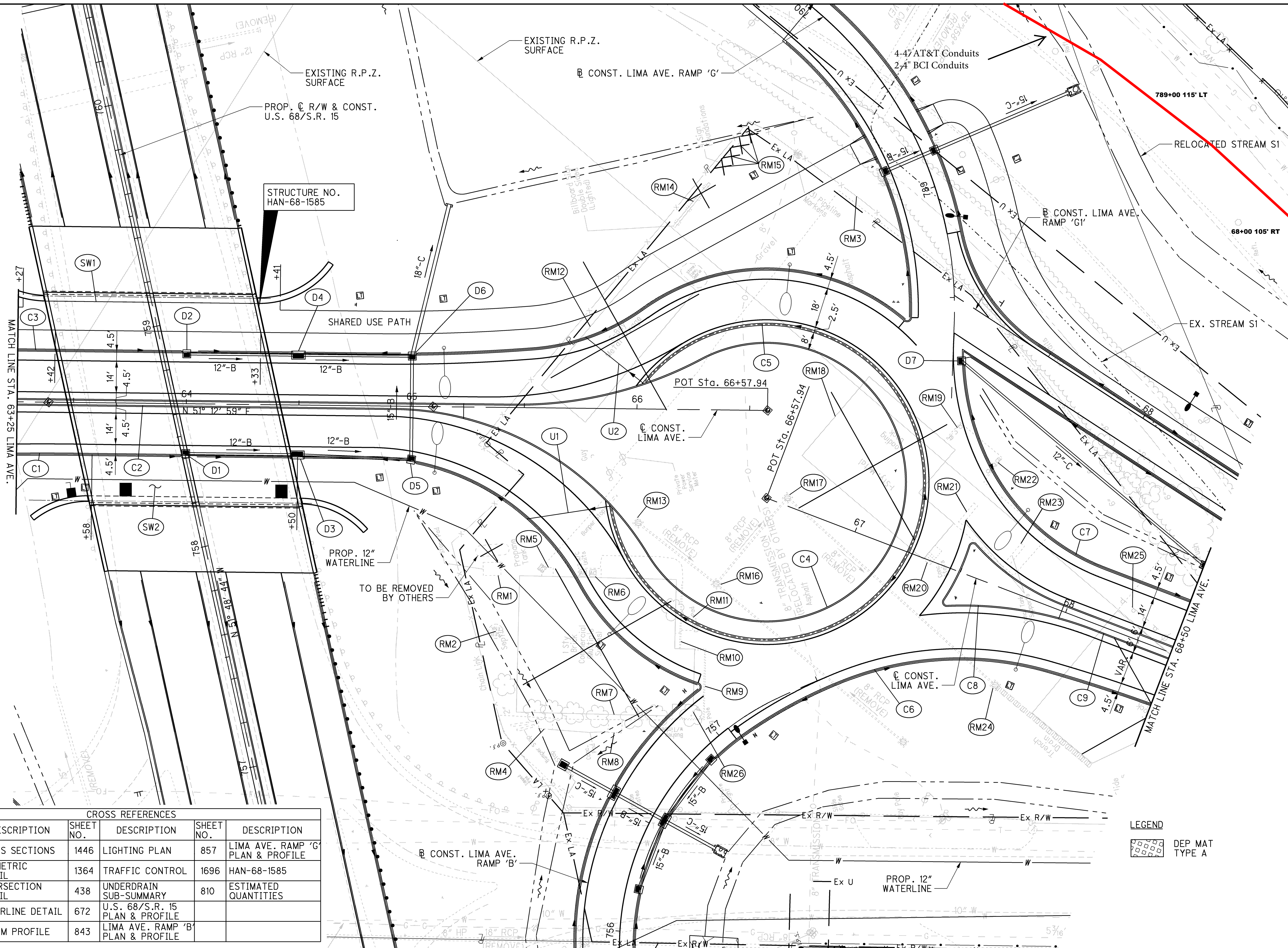
CALCULATED MCK CHECKED ABS

SEE PRINT 811

PLAN - LIMA AVE.
STA. 63+25 TO STA. 68+50

HAN-75-14.39

808
2034



STRUCTURE NO.
HAN-68-1585

MATCH LINE STA. 63+25 LIMA AVE.

MATCH LINE STA. 68+50 LIMA AVE.

| CROSS REFERENCES | | | | | |
|------------------|---------------------|-----------|-----------------------------------|-----------|-----------------------------------|
| SHEET NO. | DESCRIPTION | SHEET NO. | DESCRIPTION | SHEET NO. | DESCRIPTION |
| | CROSS SECTIONS | 1446 | LIGHTING PLAN | 857 | LIMA AVE. RAMP 'G' PLAN & PROFILE |
| 16 | GEOMETRIC DETAIL | 1364 | TRAFFIC CONTROL | 1696 | HAN-68-1585 |
| 1068 | INTERSECTION DETAIL | 438 | UNDERDRAIN SUB-SUMMARY | 810 | ESTIMATED QUANTITIES |
| 1287 | WATERLINE DETAIL | 672 | U.S. 68/S.R. 15 PLAN & PROFILE | | |
| 809 | STORM PROFILE | 843 | LIMA AVE. RAMP 'B' PLAN & PROFILE | | |

LEGEND

DEP MAT TYPE A

T:\Projects\HAN\87005\roadway\sheets\87005GP204.dgn 21-AUG-2014 1:34AM redderj

| CROSS REFERENCES | | | |
|------------------|------------------------------------|-----------|----------------------|
| SHEET NO. | DESCRIPTION | SHEET NO. | DESCRIPTION |
| | CROSS SECTIONS | 1281 | SANITARY DETAIL |
| 866 | LIMA AVE. RAMP 'G1' PLAN & PROFILE | 1229 | CULVERT DETAIL |
| 1069 | INTERSECTION DETAIL | 1365 | TRAFFIC CONTROL |
| | STORM PROFILE | 1290 | WATERLINE DETAIL |
| 1446 | LIGHTING PLAN | 815 | ESTIMATED QUANTITIES |

LEGEND

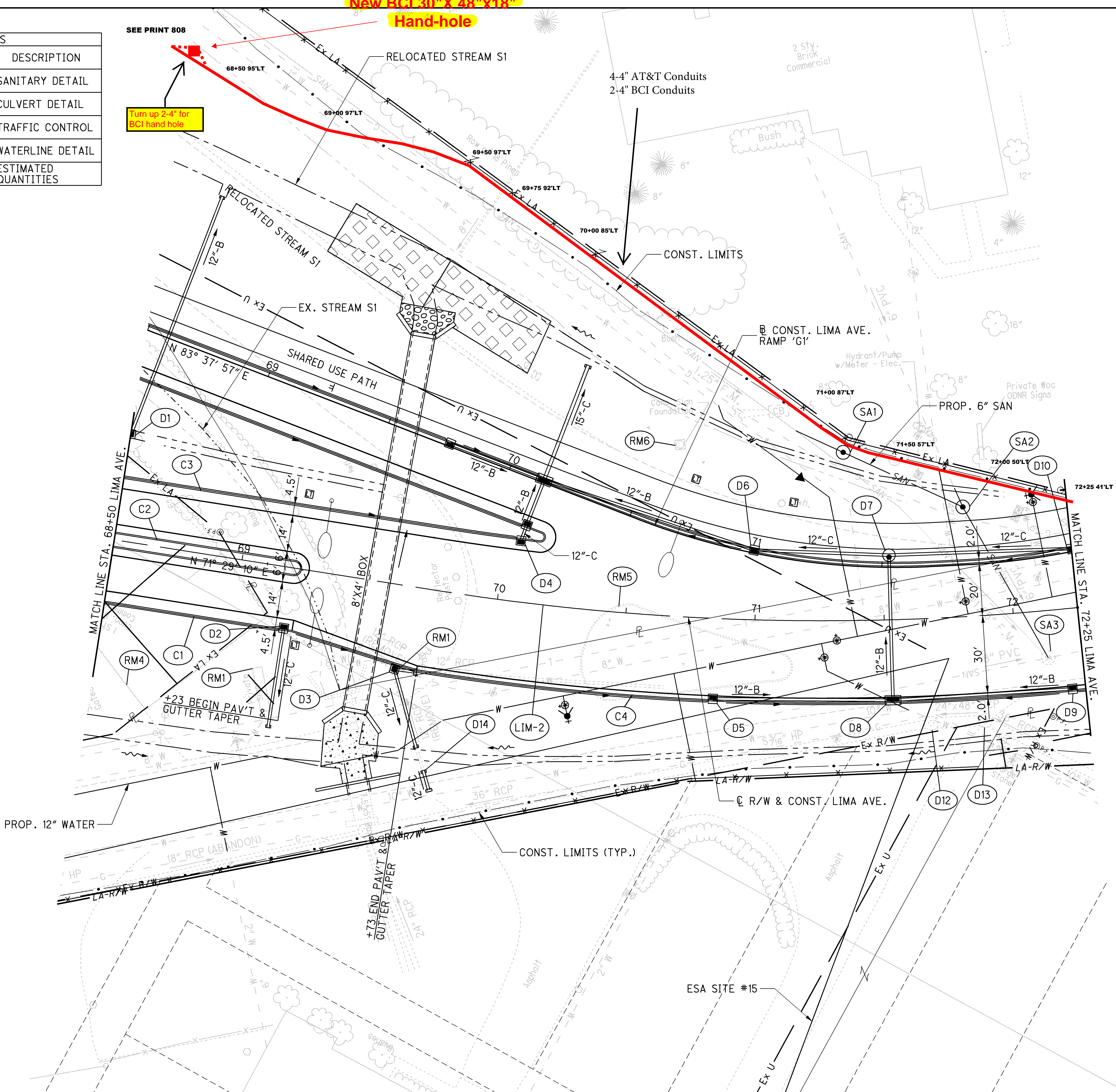
DEP MAT TYPE A

SEE PRINT 808

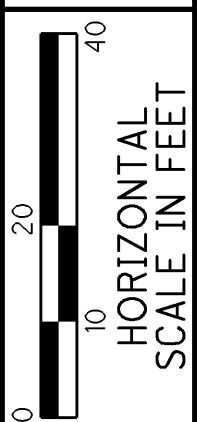
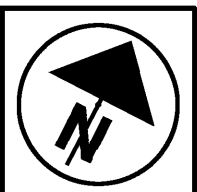
Turn up 2-4" for BCI hand hole

New BCI 30" X 48" x 18" Hand-hole

Good



CURVE LIM-2
 P.I. Sta. 71+47.83
 $\Delta = 20^\circ 16' 11''$ (LT)
 $D_c = 6^\circ 00' 00''$
 $R = 954.93'$
 $T = 170.70'$
 $L = 337.83'$
 $E = 15.14'$
 $C = 336.07'$
 $C.B. = N 61^\circ 21' 04'' E$
 $e_d = NC$



CALCULATED MCK CHECKED ABS

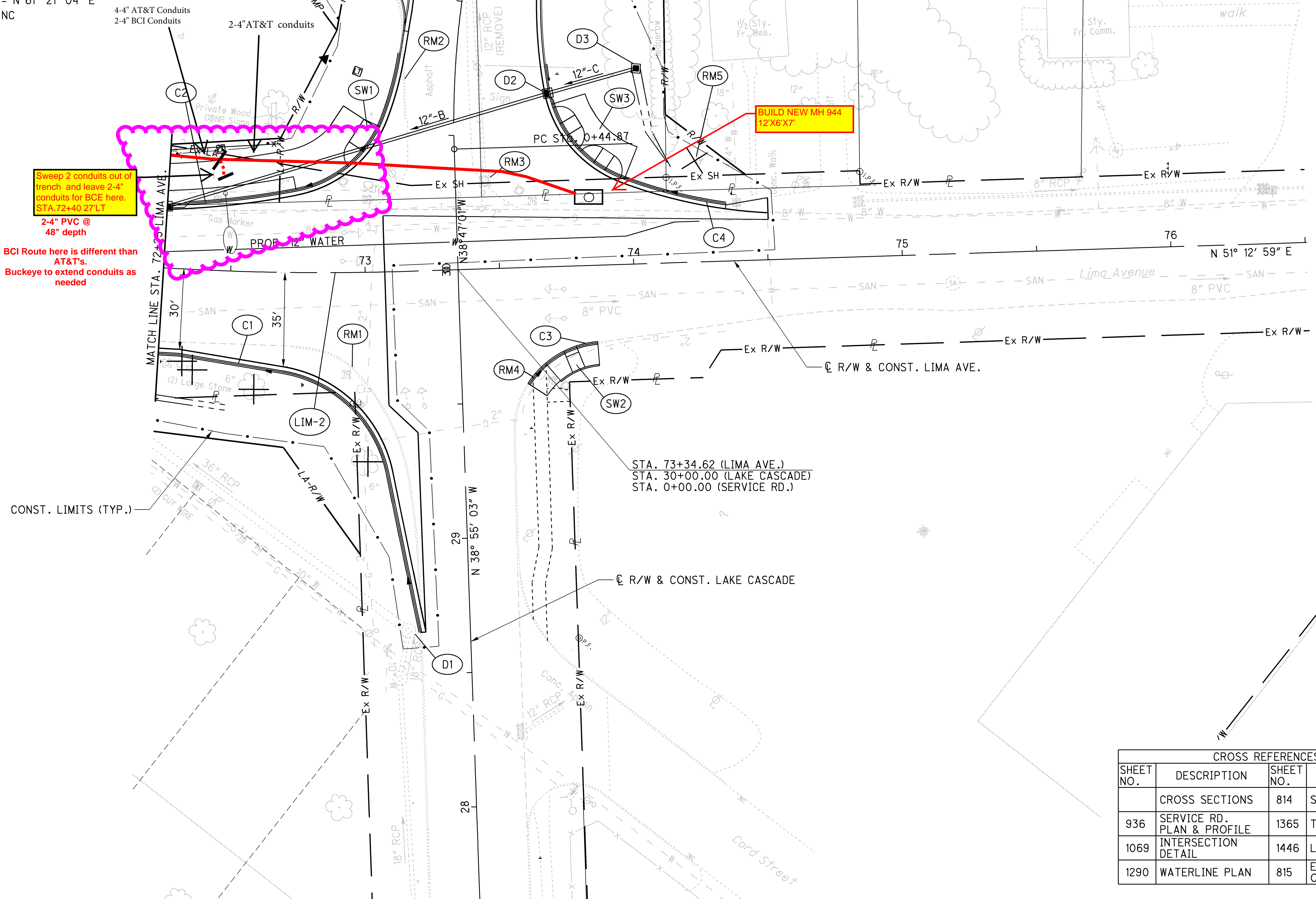
PLAN - LIMA AVE.
 STA. 68+50 TO STA. 72+25

HAN-75-14.39

811
 2034

T:\Projects\HAN\87005\roadway\sheets\87005GP205.dgn 21-AUG-2014 1:34 AM reddenj

CURVE LIM-2
 P.I. Sta. 71+47.83
 $\Delta = 20^\circ 16' 11''$ (LT)
 $D_c = 6^\circ 00' 00''$
 $R = 954.93'$
 $T = 170.70'$
 $L = 337.83'$
 $E = 15.14'$
 $C = 336.07'$
 C.B. = N 61° 21' 04" E
 $e_d = NC$



Sweep 2 conduits out of trench and leave 2-4" conduits for BCE here. STA. 72+40.27' LT

2-4" PVC @ 48" depth
 BCI Route here is different than AT&T's.
 Buckeye to extend conduits as needed

BUILD NEW MH 944 12'X6'X7'

STA. 73+34.62 (LIMA AVE.)
 STA. 30+00.00 (LAKE CASCADE)
 STA. 0+00.00 (SERVICE RD.)

| CROSS REFERENCES | | | |
|------------------|----------------------------|-----------|----------------------|
| SHEET NO. | DESCRIPTION | SHEET NO. | DESCRIPTION |
| | CROSS SECTIONS | 814 | STORM PROFILE |
| 936 | SERVICE RD. PLAN & PROFILE | 1365 | TRAFFIC CONTROL |
| 1069 | INTERSECTION DETAIL | 1446 | LIGHTING PLAN |
| 1290 | WATERLINE PLAN | 815 | ESTIMATED QUANTITIES |

T:\Projects\HAN\87005\roadway\sheets\87005GP206.dgn 21-AUG-2014 1:34 AM redderj



PLAN - LIMA AVE.
 STA. 72+25 TO END WORK

HAN-75-14.39

813
 2034