

CIVIL AS-BUILT DRAWINGS

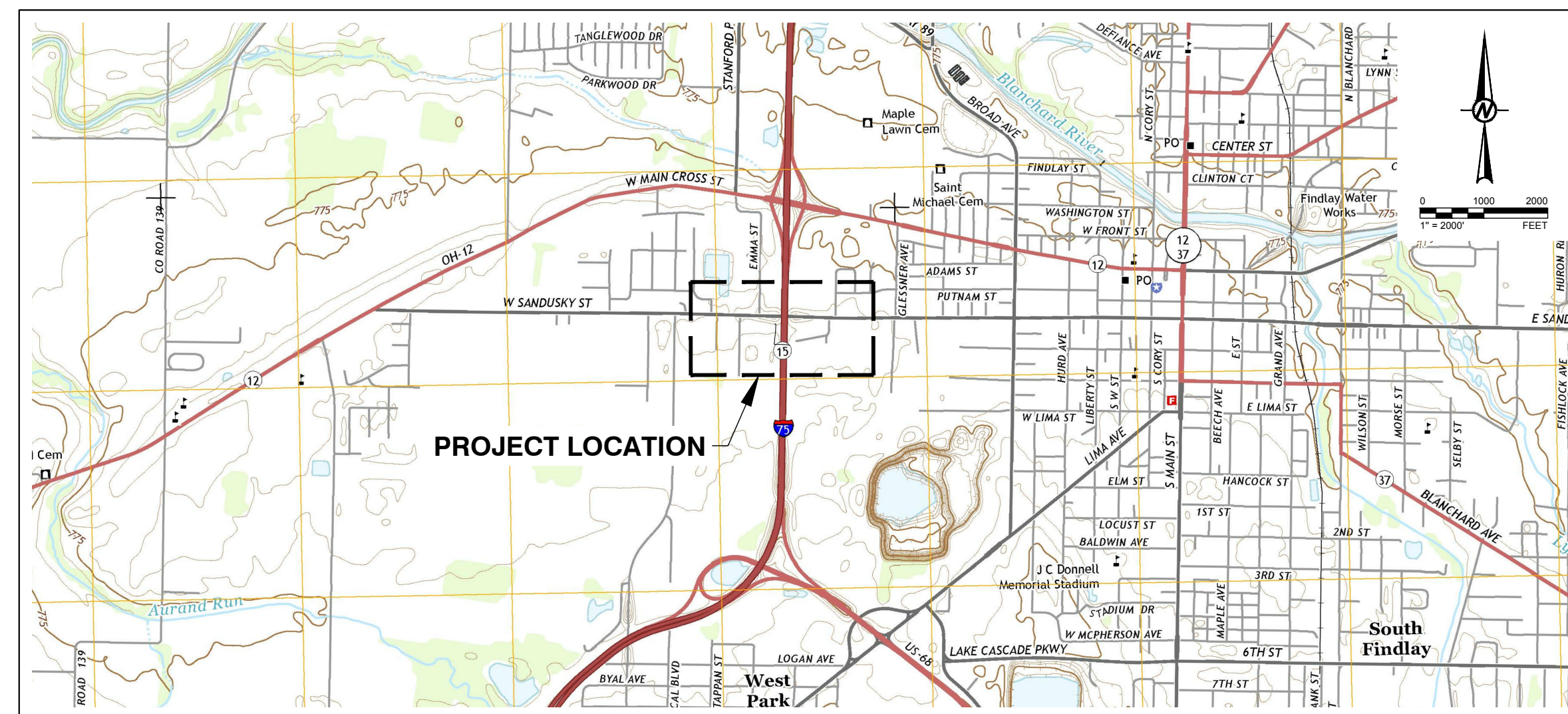
HAN 75-14.39 I-75 8-INCH PIPELINE RELOCATION

CITY OF FINDLAY, HANCOCK COUNTY, OHIO

R0471

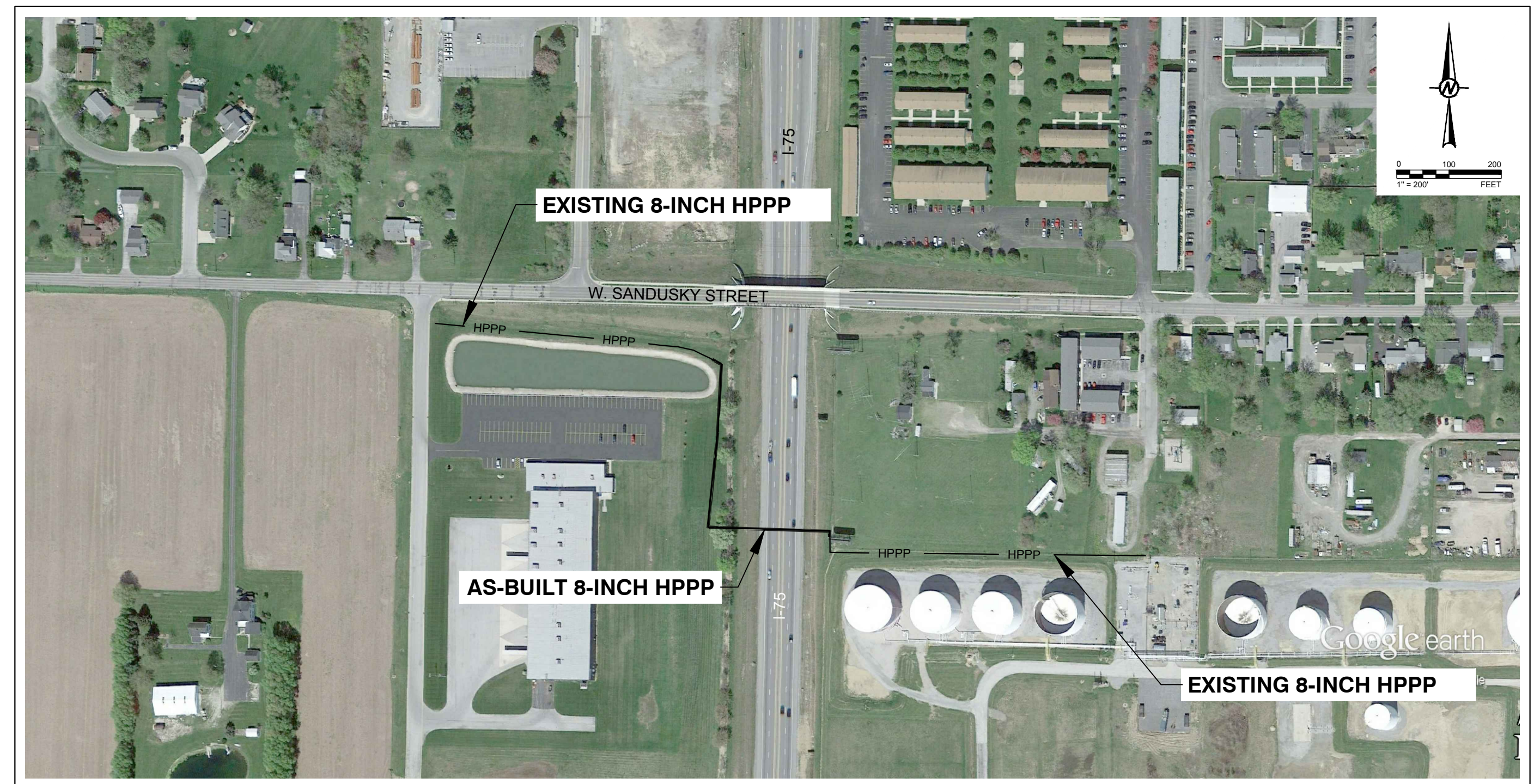
CIVIL PROJECT DRAWINGS

DRAWING NUMBER	REV. NO.	PAGE NO.	DESCRIPTION
BPL-FN405FJ-C00001	1	1	CIVIL - COVER PAGE
BPL-FN405FJ-CA0001	1	2	CIVIL - RIGHT OF WAY & WORK SPACE PLAN
BPL-FN405FJ-CA0003	1	3	CIVIL - PROPOSED CONDITIONS
BPL-FN405FJ-CA0004	1	4	CIVIL - PLAN & PROFILE 1
BPL-FN405FJ-CA0005	1	5	CIVIL - PLAN & PROFILE 2
BPL-FN405FJ-CA0006	1	6	CIVIL - WELD MAP AND PIPE DATA



REFERENCE: TOPOGRAPHIC MAP FROM 7.5 MINUTE U.S.G.S. QUADRANGLE OF FINDLAY, OHIO (2013).

VICINITY MAP



REFERENCE: AERIAL MAP FROM GOOGLE EARTH PRO, PHOTO DATE 04/06/2012.

PROJECT LOCATION MAP

GAI PROJECT NO. 1412294

All Rights Reserved. This drawing contains confidential and proprietary information and is the property of Buckeye Partners, L.P. Neither this document nor any data herein shall be copied, loaned or used for any purpose whatsoever without the prior written permission of Buckeye Partners, L.P.	5					
	4					
	3					
	2	REVISED AS-BUILT PAGES 5 AND 6 PER BUCKEYE COMMENT	GAI-SDA	GAI-MEF	7/11/16	7/11/16
	1	AS-BUILT	GAI-RC	GAI-MEF	5/25/16	5/25/16



5100 W. LEMON STREET
SUITE 208
TAMPA, FLORIDA 33609
PH 1(813)287-1717
FAX 1(813)287-1716
WEB: www.golder.com

NO	LOC	DESCRIPTION OF REVISION	BY	DATE	APPR	DATE
WORK ORDER NO. R0471						
BUCKEYE PARTNERS, L.P. BUCKEYE PIPE LINE COMPANY, L.P.						
CIVIL COVER PAGE HAN 75-14.39 I-75 8-INCH PIPELINE RELOCATION CITY OF FINDLAY, HANCOCK COUNTY, OHIO						
DRAWN:	SDA/BCL	AS SHOWN	DATE:	09/03/2015		
APPROVED:	MEF	MEF/RC	SCALE:	BPL-FN405FJ-C00001		
		CHECKED:	DRAWING NUMBER	REV	1	



**Know what's below.
Call before you dig.**

BUCKEYE PARTNERS, L.P. ("BUCKEYE") IS NOT LIABLE FOR ANY EVENT(S) ARISING OUT OF THE USE OF THIS INFORMATION. INFORMATION CONTAINED HEREIN IS "SECURITY SENSITIVE INFORMATION" AND SHOULD NOT BE REPRODUCED OR DISTRIBUTED IN ANY FORM WITHOUT WRITTEN PERMISSION FROM BUCKEYE. THE LOCATION OF BUCKEYE'S PIPELINES/FACILITIES ARE NOTED FOR GENERAL PURPOSES ONLY AND SHOULD NOT BE CONSIDERED SPECIFIC OR EXACT. THIS INFORMATION SHOULD NOT BE USED AS A SUBSTITUTE FOR CONTACTING THE APPROPRIATE ONE-CALL CENTER. BUCKEYE ENDORSES THE USE OF THE 811 NATIONAL ONE-CALL SYSTEM.



LEGEND

- PL ——— PL ——— EXISTING PROPERTY LINE (APPROXIMATE LOCATION)
- HPPP ——— HPPP ——— EXISTING HIGH PRESSURE PETROLEUM PIPELINE
- X ——— X ——— FENCE LINE
- ——— ODOT AS-BUILT RIGHT-OF-WAY
- ——— AS-BUILT PIPELINE EASEMENT LIMITS
- 7d □ SUBJECT PARCEL / PROPERTY

REFERENCES

1. PROPOSED ODOT FENCE AND RIGHT-OF-WAY LINES SHOWN COLLECTED FROM ODOT I-75 IMPROVEMENT PROJECT HAN 75 - 14.39 (87005BC001.DWG).
2. AERIAL LICENSED FROM GOOGLE EARTH PRO (2015).
3. TOPOGRAPHIC SURVEY AND UTILITY INFORMATION SHOWN PROVIDED BY GARCIA SURVEYORS, INC., FIELD SURVEY DATE 4/15/2015. PORTIONS OF EXISTING GAS PIPELINE INFORMATION SHOWN DERIVED FROM DRAWING FILE "EZQE017_SUE_holes.dgn", PROVIDED BY ODOT (Eric J. Scheckelhoff, P.E.) ON 3/31/15. HORIZONTAL AND VERTICAL LOCATIONS OF EXISTING GAS PIPELINE INFORMATION PROVIDED BY SO-DEEP U.S., P.C. TEST HOLE CERTIFICATION FORMS, CONTROL #EZQE017, DATED JUNE THROUGH SEPTEMBER 2013.
4. HORIZONTAL DATUM TAKEN FROM GROUND COORDINATES TABLE "PRIMARY CONTROL POINTS SET ALONG PROPOSED I-75", AS SHOWN ON PROJECT HAN 75 - 14.39 (87005GM001.DGN)
5. PROPERTY ID NUMBER OBTAINED FROM HANCOCK COUNTY AUDITOR (HTTP://HANCOCK.IVIEWAUDITOR.COM/MAP.ASPX).
6. EXISTING PIPELINE STATIONING OBTAINED FROM BUCKEYE PIPE LINE COMPANY, PIPE LINE ATLAS - 8" FINDLAY JUNCTION TO FINDLAY STATION PAGE 2 (INCLUDED AS PAGE 9 IN THIS SET)
7. AS-BUILT CENTERLINE, DEPTH OF COVER AND ADJACENT EXISTING GRADE DATA SURVEYED BY GARCIA SURVEYORS, INC. 144-02042FAB00A1.dwg DATED 05/03/2016.
8. ALL AS-BUILT PIPING INFORMATION INCLUDING WELD NO., TIE-IN NO., P.I. NO., ASSOCIATED NORTHING AND EASTING LOCATION NUMBERS, BEND DATA, JOINT LENGTHS, ASSOCIATED STATIONING LOCATIONS, HT DATA, FACTORY AND FIELD JOINTS, DIAMETER, WALL THICKNESS, GRADE, TYPE, COATING AND COATING THICKNESS SUPPLIED BY GARCIA SURVEYORS, INC.
9. SURVEY COORDINATE SYSTEM USED IS NAD83, ZONE : OHIO NORTH 3401.
10. UNLESS OTHERWISE NOTED STATIONING AS SHOWN ON THE AS-BUILT DRAWINGS IS TRUE HORIZONTAL PLANE STATIONING AND NOT CENTERLINE CHAIN LENGTH STATIONING. THE ACTUAL LENGTH OF PIPE INSTALLED (CHAIN LENGTH ALONG CENTERLINE OF PIPE) VERSUS HORIZONTAL PLAN STATIONING IS SHOWN ON THE PIPE DATA TABLE ON DRAWING CA0006.

GAI PROJECT NO. 1412294

5				
4				
3				
2				
1	AS-BUILT		GAI-RC 5/25/16	GAI-MEF 5/25/16
NO	LOC	DESCRIPTION OF REVISION	BY DATE	APPR DATE

Golder Associates
 5100 W. LEMON STREET
 SUITE 208
 TAMPA, FLORIDA 33609
 PH 1(813)287-1717
 FAX 1(813)287-1716
 WEB: www.golder.com

WORK ORDER NO. R0471

BUCKEYE PARTNERS, L.P.
 BUCKEYE PIPE LINE COMPANY, L.P.

CIVIL
 BPL-FN405FJ-CA0001 - RIGHT OF WAY & WORK SPACE PLAN
 HAN 75-14.39 I-75 8-INCH PIPELINE RELOCATION
 CITY OF FINDLAY, HANCOCK COUNTY, OHIO

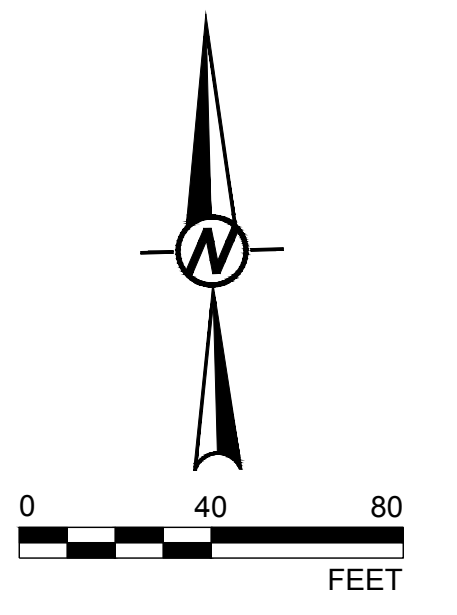
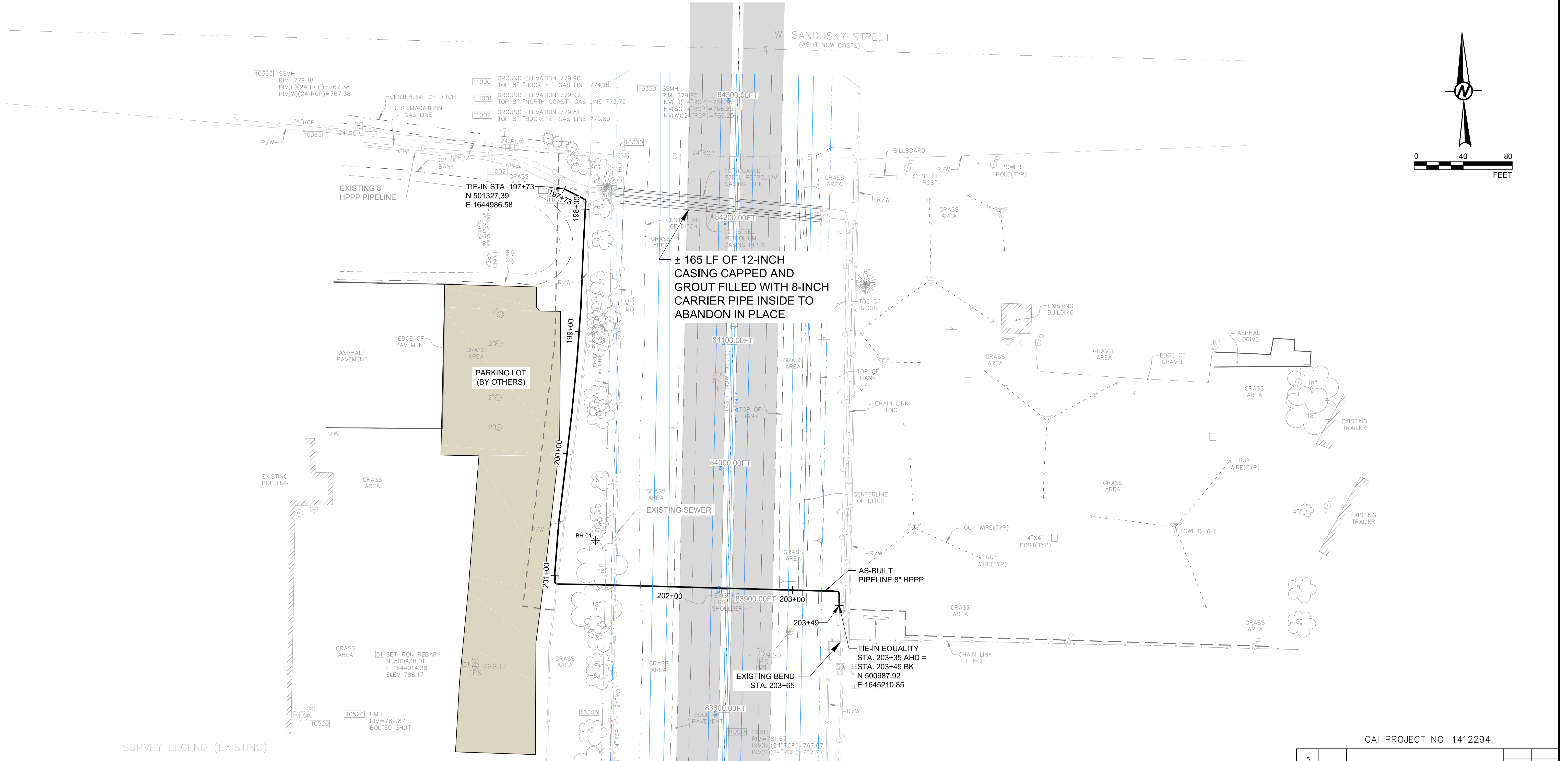
DATE: 09/03/2015

DO NOT SCALE DRAWING

PAGE 2

Drawing File: BPL-FN405FJ-CA0001.dwg | Layout: R0471 | Plot Size: 11x17.5 | Plotted: 07/11/16 9:50am | Plotted By: STAnderson

Drawing File: BPL-FN405FJ-CA0003.dwg | Layout: Proposed Conditions | Modified: 07/11/16 8:52am | Plotted: 07/11/16 8:52am | Plotted by: STredmond



SURVEY LEGEND (EXISTING)

⊕	CONTROL POINT	⊕M	UNKNOWN MANHOLE
⊕G	GAS LINE MARKER	⊕E	ELECTRIC BOX
⊕V	GAS VALVE	⊕SA	SANITARY MANHOLE
⊕GTS	GAS TEST STATION	⊕T	TELEPHONE MANHOLE
⊕GVT	GAS VENT	⊕C	CLEANOUT
⊕	STEEL POST	⊕W	IRRIGATION CONTROL VALVE
⊕	4"x4" POST	⊕TEL	TELEPHONE LINE MARKER
⊕	SIGN	⊕	GUY WIRE
⊕	DECIDUOUS TREE	⊕	TOWER
⊕	CONIFEROUS TREE	⊕	POWER POLE
⊕	SHRUB	---	RIGHT OF WAY (R/W)
⊕	EXISTING BUILDING	---	UNDERGROUND GAS LINE
INV	INVERT ELEVATION	---	UNDERGROUND SANITARY LINE
SSMH	SANITARY SEWER MANHOLE	---	FENCE LINE
UMH	UNKNOWN MANHOLE	(NOT SHOWN)	EXISTING GROUND 5-FOOT CONTOUR
		(NOT SHOWN)	EXISTING GROUND 1-FOOT CONTOUR
		---	ODOT PROPOSED FENCE LINE

PLAN
SCALE: 1"=40'

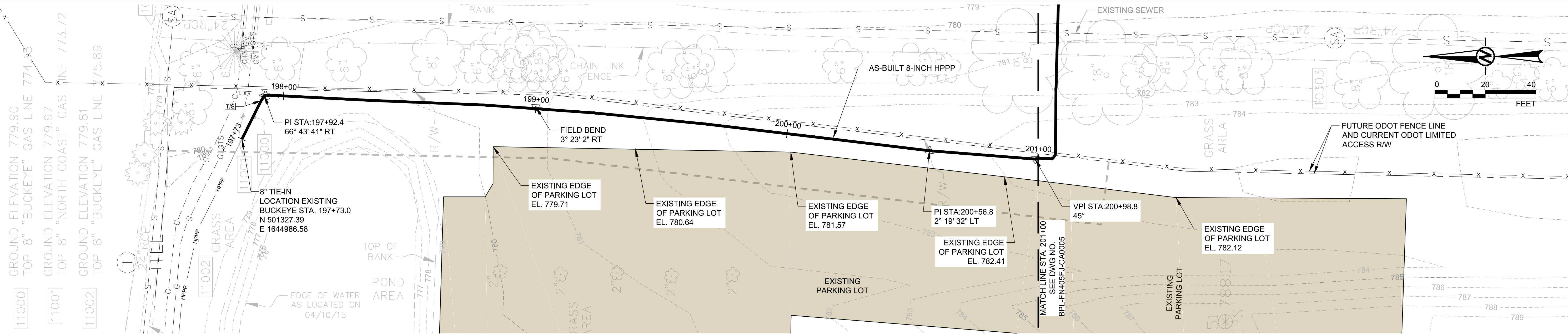
LEGEND

---	HPPP	---	EXISTING BUCKEYE PIPELINE CENTERLINE
---		---	EXISTING BUCKEYE PIPELINE 25 FT EASEMENT
---		---	AS-BUILT PIPELINE 8-INCH HPPP
---	X	---	FENCE LINE
---		---	EXISTING PARKING LOT
---		---	EXISTING SWALE
---		---	FUTURE ODOT IMPROVEMENTS ON HAN 75-14.39

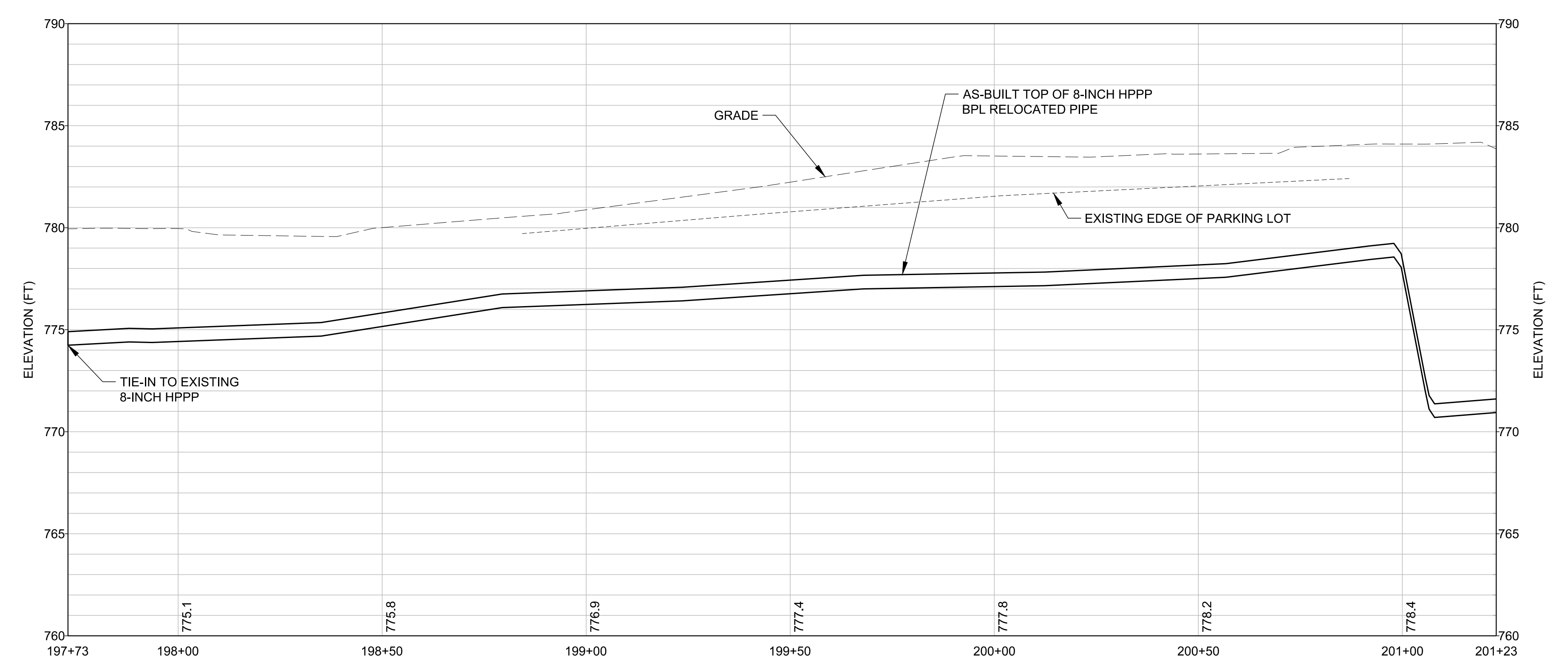
Golden Associates
5100 W. LEMON STREET
SUITE 208
TAMPA, FLORIDA 33609
PH 1(813)287-1717
FAX 1(813)287-1716
WEB: www.golder.com

GAI PROJECT NO. 1412294			
5			
4			
3			
2			
1	AS-BUILT		GAI-RC 5/25/16 GAI-MEF 5/25/16
NO LOC	DESCRIPTION OF REVISION	BY DATE	APPR DATE
	WORK ORDER NO. R0471		
BUCKEYE PARTNERS, L.P. BUCKEYE PIPE LINE COMPANY, L.P.			
CIVIL BPL-FN405FJ-CA0003 - PROPOSED CONDITIONS HAN 75-14.39 1-75 8-INCH PIPELINE RELOCATION CITY OF FINDLAY, HANCOCK COUNTY, OHIO			
DRAWN:	SDA/BCL	AS SHOWN SCALE:	DATE: 09/03/2015
APPROVED:	MEF	MEF/RC CHECKED:	BPL-FN405FJ-CA0003 DRAWING NUMBER
PAGE	3	DO NOT SCALE DRAWING	REV 1

JURISDICTION	HANCOCK COUNTY, OHIO	
OWNER/ROW #	KOEHLER BROTHERS INC., DASTKO LTD / R/W 22	
TERRAIN SURFACE	GRASS	
STATIONING	BEGIN PIPELINE RELOCATION AS-BUILT STA. 197+73 STA. 197+90 TYPE I TEST STATION STA. 197+92.4 PI RIGHT 66° 43' 41" FIELD BEND 3° 23' 2" RT STA. 200+98.8 VPI 45° MATCH LINE SEE DWG NO. BPL-FN405FJ-CA0005	
PIPE/COATING	①	②
MISC./CASING		
CATHODIC	⑤ (T/S)	



PLAN
SCALE: 1" = 20'

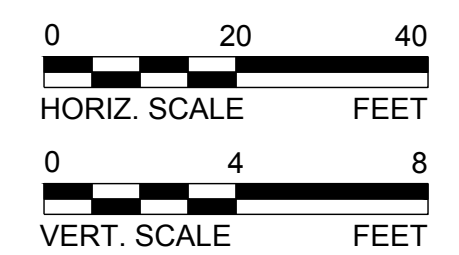


PROFILE
SCALE: 1" = 20' HORIZ.
1" = 4' VERT.

LEGEND

	HPPP	EXISTING BUCKEYE PIPELINE CENTERLINE
		EXISTING BUCKEYE 25 FT PIPELINE EASEMENT AREA
		AS-BUILT PIPELINE 8-INCH HPPP
		EXISTING RIGHT OF WAY (R/W) /PROPERTY LINE (APPROXIMATE)
	-780	EXISTING GROUND 5-FOOT CONTOUR
	-781	EXISTING GROUND 1-FOOT CONTOUR
		EXISTING PARKING LOT

SEE DRAWING NUMBER BPL-FN405FJ-CA0005 FOR AS-BUILT BILL OF MATERIAL.



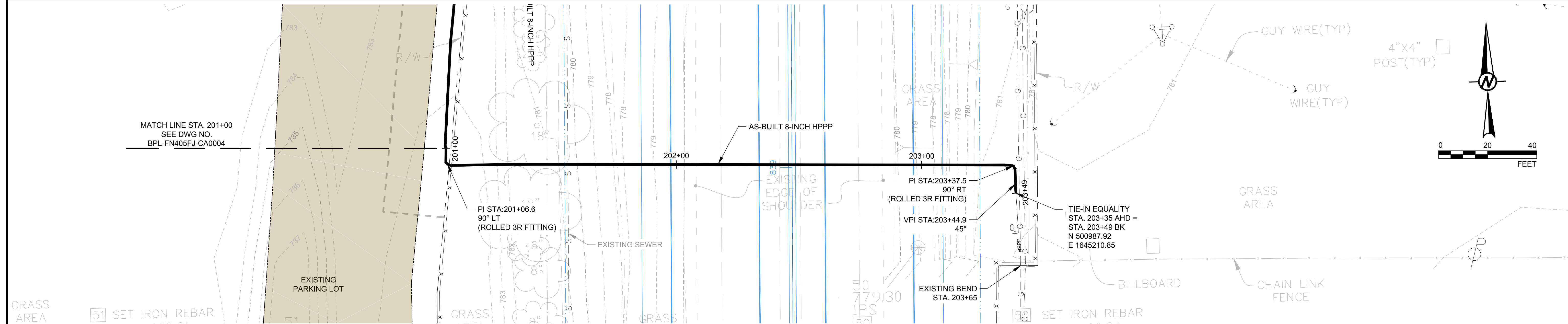
Golden Associates
5100 W. LEMON STREET
SUITE 208
TAMPA, FLORIDA 33609
PH 1(813)287-1717
FAX 1(813)287-1716
WEB: www.golder.com

GAI PROJECT NO. 1412294			
5			
4			
3			
2			
1	AS-BUILT		
NO	LOC	DESCRIPTION OF REVISION	BY DATE APPR DATE
		WORK ORDER NO. R0471	
BUCKEYE PARTNERS, L.P. BUCKEYE PIPE LINE COMPANY, L.P.			
CIVIL BPL-FN405FJ-CA0004-5 - PLAN & PROFILE 1 HAN 75-14.39 I-75 8-INCH PIPELINE RELOCATION CITY OF FINDLAY, HANCOCK COUNTY, OHIO			
DRAWN:	SDA/BCL	AS SHOWN SCALE:	DATE: 09/03/2015
APPROVED:	MEF	MEF/RC CHECKED:	BPL-FN405FJ-CA0004
DRAWING NUMBER			REV 1

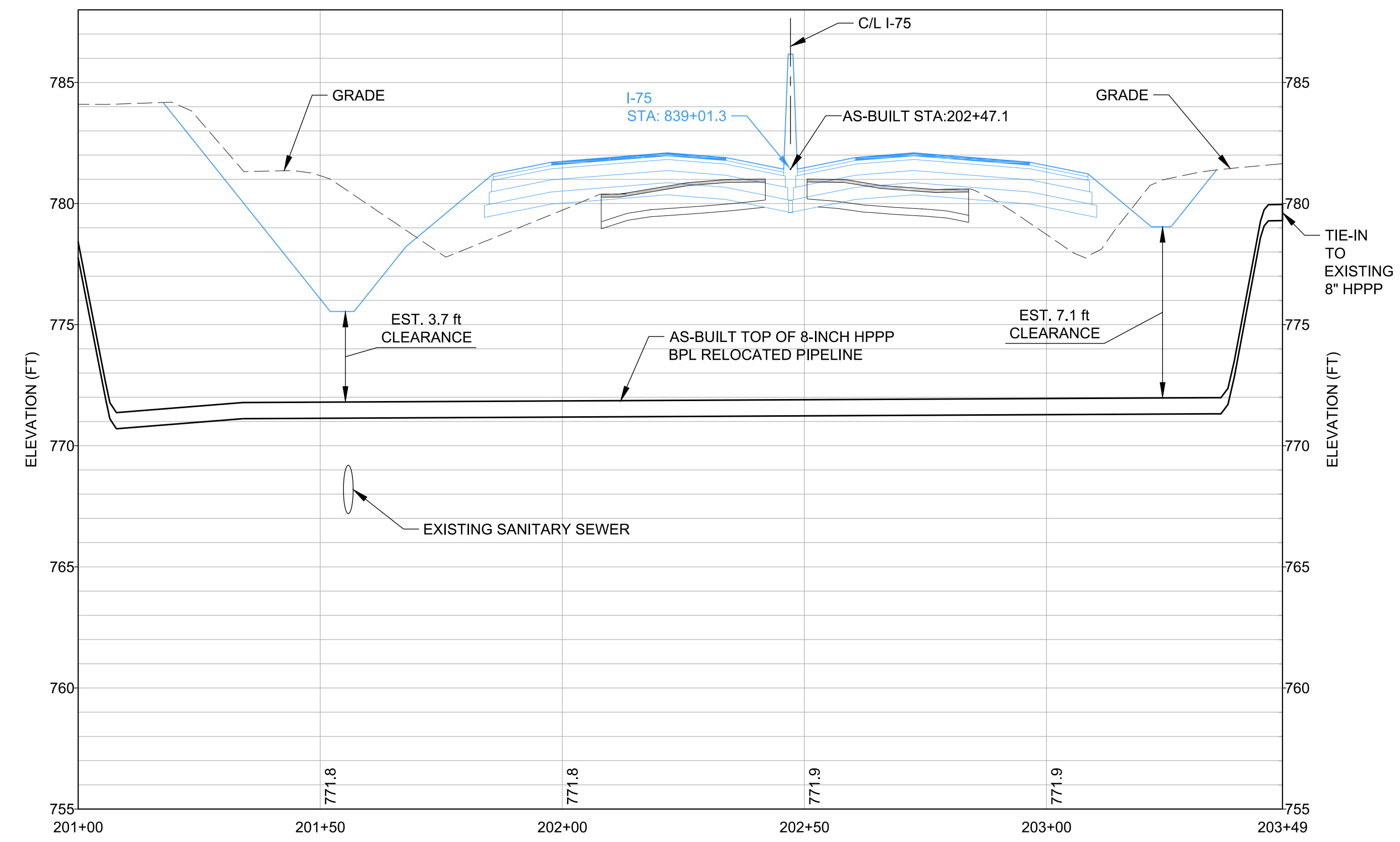
PAGE 4
DO NOT SCALE DRAWING

Drawing File: BPL-FN405FJ-CA0004-5.dwg | Layout: Plan & Profile | 11/11/16 9:53am | Plotted by: ST/Anderson

JURISDICTION	HANCOCK COUNTY, OHIO		
OWNER/ROW #	KOEHLER BROTHERS INC., DASTKO LTD / RW 22	ODOT I-75 ROW	
TERRAIN SURFACE	GRASS	ASPHALT	GRASS
STATIONING	MATCH LINE STA. 201+00 - SEE DWG NO. BPL-FN405FJ-CA0004	STA. 201+06.6 (PI LEFT 90°) (ROLLED 3R FITTING) STA. 201+07.2 (DOT LIMITED ACCESS RW LINE)	STA. 203+37.5 (PI RIGHT 90°) (ROLLED 3R FITTING) STA. 203+44.9 (VPI 45°)
PIPE/COATING	AS-BUILT 8-INCH HPPP		
MISC./CASING			
CATHODIC			



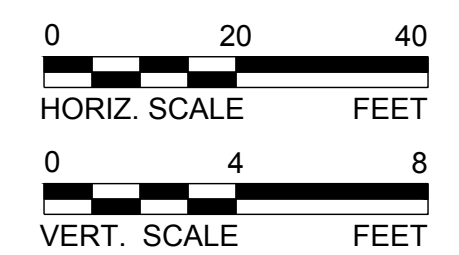
PLAN
SCALE: 1" = 20'



PROFILE
SCALE: 1" = 20' HORIZ.
1" = 4' VERT.

LEGEND

	HPPP	EXISTING BUCKEYE PIPELINE CENTERLINE
		EXISTING BUCKEYE PIPELINE EASEMENT
		AS-BUILT PIPELINE 8-INCH HPPP
		EXISTING RIGHT OF WAY (R/W) / PROPERTY LINE (APPROXIMATE)
	-780-	EXISTING GROUND 5-FOOT CONTOUR
	-781-	EXISTING GROUND 1-FOOT CONTOUR
		EXISTING PARKING LOT
		FUTURE ODOT IMPROVEMENTS ON HAN 75-14.39



GAI PROJECT NO. 1412294

5				
4				
3				
2	REVISED AS-BUILT PER BUCKEYE COMMENT		GAI-SDA 7/11/16	GAI-MEF 7/11/16
1	AS-BUILT		GAI-RC 5/25/16	GAI-MEF 5/25/16
NO	LOC	DESCRIPTION OF REVISION	BY DATE	APPR DATE
WORK ORDER NO.		R0471		

BUCKEYE PARTNERS, L.P. BUCKEYE PIPE LINE COMPANY, L.P.		
CIVIL BPL-FN405FJ-CA0004-5 - PLAN & PROFILE 2 HAN 75-14.39 I-75 8-INCH PIPELINE RELOCATION CITY OF FINDLAY, HANCOCK COUNTY, OHIO		
SDA/BCL	AS SHOWN	DATE: 09/03/2015
DRAWN:	SCALE:	
MEF	MEF/RC	BPL-FN405FJ-CA0005
APPROVED:	CHECKED:	DRAWING NUMBER
		REV 1

Golden Associates
5100 W. LEMON STREET
SUITE 208
TAMPA, FLORIDA 33609
PH 1(813)287-1717
FAX 1(813)287-1716
WEB: www.golder.com

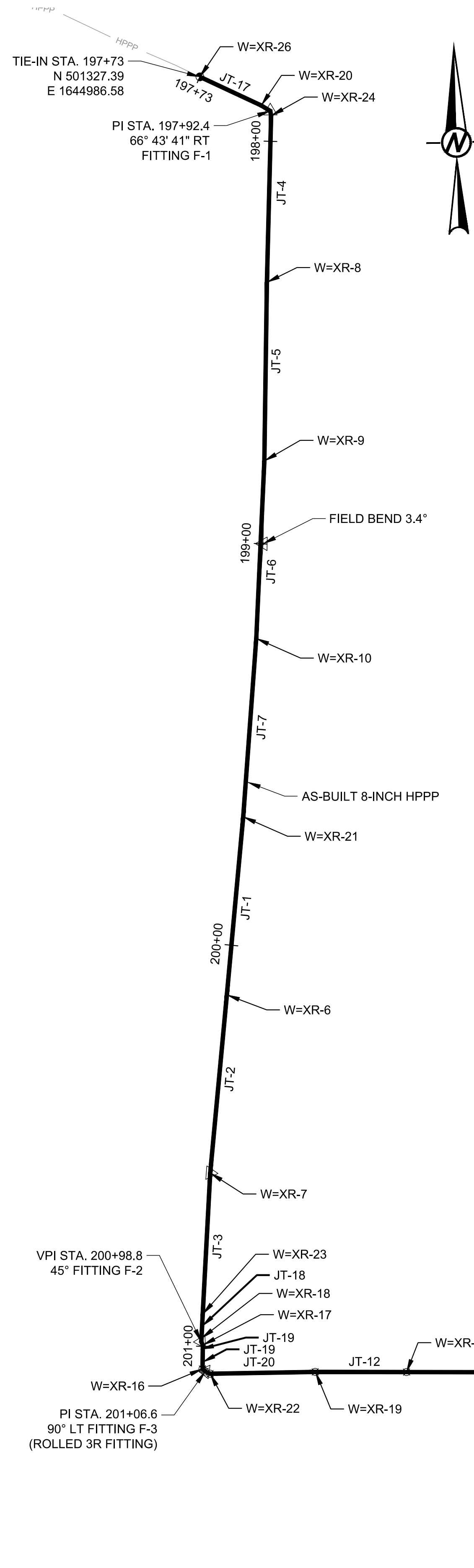
PAGE 5
DO NOT SCALE DRAWING

BILL OF MATERIAL

ITEM	MATERIAL DESCRIPTION	RECOMMENDED ORDER QUANTITY	B.O.M. NOTES
1	PIPE, 8.625" O.D. x unk. W.T., unk. grade, unk. Coating	EXIST.	
2	PIPE, 8.625" O.D. x 0.322" W.T., API 5L X-52, ERW, W/ 40 MILS ARO OVER FBE COATING (14-16 MILS DFT)	583	
3	8" NPS, FITTING, ELL, 90°, 3R, SEGMENTABLE, WPHY-52, ENDS TO MATCH 0.322"	3	
4	8" NPS, FITTING, ELL, 45°, 3R, SEGMENTABLE, WPHY-52, ENDS TO MATCH 0.322"	2	
5	Test Station, Type 1	1	

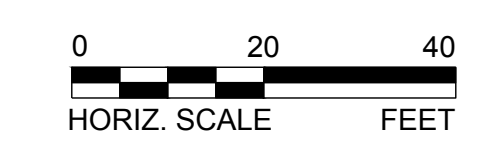
NOTES:

Drawing File: BPL-FN405FJ-CA0004-5.dwg | Layout: Plan & Profile 2 | Modified: 07/11/16 4:43pm | Plotted: 07/11/16 4:43pm | Plotted by: STAnderson



Line Order	Survey Point ID	Longitude (NAD83)	Latitude (NAD83)	Northing	Easting	Top of Pipe Elevation	Feature Code	Weld No.	Weld Construction Stationing (C/L of Pipe) (Chain Length)	Weld As-Built Stationing (Tied into Existing Sta.) (Chain Length)	Field Jt # Ahead	Field Joint Length (FT)	Heat Number	Diameter (IN)	Wall Thickness (IN)	Mat'l Grade	Pipe Manuf. / Fitting Type	Coating Manuf.	Coating Type	Coating Thick	Welder Initials		
1	7045	41.03660741	-83.67334869	501327.4	1644986.6	774.906	WELD	XR-26 TIE IN #1	0+00.0	197+73.00												SB	
2	7041	41.03658553	-83.67328871	501319.194	1645003.021	774.98	WELD	XR-20	0+18.5	197+91.50	JT-17	18.5	JN75495	8	0.322	X-52	ERW	Powercete	ARO/FBE	14/40		SB	
3	7039	41.03658029	-83.67328503	501317.272	1645004.009	775.041	WELD	XR-24	0+21.0	197+94.00	F-1	2.5	Y928N	8	0.322	Y52	3R	Roller	ARO	40-60		SB	
4	7012	41.03646674	-83.67329074	501275.925	1645001.878	775.353	WELD	XR-8	0+62.3	198+35.30	JT-4	41.3	JN7553C	8	0.322	X-52	ERW	Powercete	ARO/FBE	14/40		SB	
5	7013	41.03634499	-83.67329506	501231.589	1645000.091	776.751	WELD	XR-9	1+06.8	198+79.80	JT-5	44.5	JN7553C	8	0.322	X-52	ERW	Powercete	ARO/FBE	14/40		SB	
6	7014	41.03622407	-83.6733044	501187.572	1644996.923	777.082	WELD	XR-10	1+50.9	199+23.90	JT-6	44.1	JN7553C	8	0.322	X-52	ERW	Powercete	ARO/FBE	14/40		SB	
7	7015	41.03610261	-83.67331821	501143.377	1644992.518	777.667	WELD	XR-21	1+95.4	199+68.40	JT-7	44.5	JN7553C	8	0.322	X-52	ERW	Powercete	ARO/FBE	14/40		SB	
8	7016	41.03598138	-83.67333497	501099.275	1644987.304	777.825	WELD	XR-6	2+39.8	200+12.80	JT-1	44.4	JN7546B	8	0.322	X-52	ERW	Powercete	ARO/FBE	14/40		SB	
9	7017	41.03586013	-83.67335203	501055.166	1644982.004	778.238	WELD	XR-7	2+84.3	200+57.30	JT-2	44.5	JN7549F	8	0.322	X-52	ERW	Powercete	ARO/FBE	14/40		SB	
10	7018	41.03576388	-83.67336038	501020.135	1644979.231	779.105	WELD	XR-23	3+19.4	200+92.40	JT-3	35.1	JN7553C	8	0.322	X-52	ERW	Powercete	ARO/FBE	14/40		SB	
11	7019	41.03574745	-83.67336174	501014.153	1644978.774	779.231	WELD	XR-18	3+25.4	200+98.40	JT-18	6	JN7553C	8	0.322	X-52	ERW	Powercete	ARO/FBE	14/40		SB	
12	7021	41.03574278	-83.67336061	501012.449	1644979.062	778.726	WELD	XR-17	3+27.3	201+00.30	F-2	1.9	Y382H	8	0.322	Y52	3R	Roller	ARO	40-60		SB	
13	7022	41.03572657	-83.67336122	501006.546	1644978.816	772.65	WELD	XR-16	3+35.6	201+08.60	JT-19	8.3	JN7553C	8	0.322	X-52	ERW	Powercete	ARO/FBE	14/40		SB	
14	7024	41.03572319	-83.6733544	501005.288	1644980.679	771.367	WELD	XR-22	3+38.6	201+11.60	F-3	3	Y928N	8	0.322	Y52	3R	Roller	ARO	40-60		SB	
15	7026	41.03572353	-83.67325968	501005.063	1645006.81	771.784	WELD	XR-19 (tie to bore pipe)	3+64.8	201+37.80	JT-20	26.2	JN7553C	8	0.322	X-52	ERW	Powercete	ARO/FBE	14/40		SB	
16	n/a	Bore Pipe pulled into hole no coordinates surveyed						WELD	XR-2 (bored)	3+87.5	201+60.50	JT-12	22.7	JN7552B	8	0.322	X-52	ERW	Powercete	ARO/FBE	14/40		SB
17	n/a	Bore Pipe pulled into hole no coordinates surveyed						WELD	XR-3 (bored)	4+31.9	202+04.90	JT-11	44.4	JN7547F	8	0.322	X-52	ERW	Powercete	ARO/FBE	14/40		SB
18	n/a	Bore Pipe pulled into hole no coordinates surveyed						WELD	XR-4 (bored)	4+76.3	202+49.30	JT-10	44.4	JN7553C	8	0.322	X-52	ERW	Powercete	ARO/FBE	14/40		SB
19	n/a	Bore Pipe pulled into hole no coordinates surveyed						WELD	XR-5 (bored)	5+20.7	202+93.70	JT-9	44.4	JN7553C	8	0.322	X-52	ERW	Powercete	ARO/FBE	14/40		SB
20	7008	41.03571563	-83.67253458	500999.499	1645206.786	771.984	WELD	XR-11 (tie to bore pipe)	5+65.1	203+38.10	JT-8	44.4	JN7549F	8	0.322	X-52	ERW	Powercete	ARO/FBE	14/40		SB	
21	7009	41.03571547	-83.67252754	500999.415	1645208.725	771.885	WELD	XR-12	5+67.1	203+40.10	JT-13	2	JN7549F	8	0.322	X-52	ERW	Powercete	ARO/FBE	14/40		SB	
22	7011	41.03571131	-83.67252017	500997.872	1645210.74	773.504	WELD	XR-13	5+70.1	203+43.10	F-4	3	Y928N	8	0.322	Y52	3R	Roller	ARO	40-60		SB	
23	7059	41.03569651	-83.6725199	500992.479	1645210.74	779.265	WELD	XR-14	5+78.5	203+51.50	JT-14	8.4	JN7549F	8	0.322	X-52	ERW	Powercete	ARO/FBE	14/40		SB	
24	7061	41.03569202	-83.67251976	500990.842	1645210.757	779.955	WELD	XR-15	5+80.0	203+53.00	F-5	1.5	Y382H	8	0.322	X-52	ERW	Powercete	ARO/FBE	14/40		SB	
25	7062	41.03568401	-83.67251927	500987.921	1645210.853	779.964	WELD	XR-27	5+83.0	203+56.00	JT-15	3	JN7549F	8	0.322	X-52	ERW	Powercete	ARO/FBE	14/40		SB	

PLAN
SCALE: 1" = 20'



Golden Associates
5100 W. LEMON STREET
SUITE 208
TAMPA, FLORIDA 33609
PH 1(813)287-1717
FAX 1(813)287-1716
WEB: www.golder.com

GAI PROJECT NO. 1412294

5					
4					
3					
2		REVISED AS-BUILT PER BUCKEYE COMMENT		GAI-SDA 7/11/16	GAI-MEF 7/11/16
1		AS-BUILT		GAI-RC 5/25/16	GAI-MEF 5/25/16
NO	LOC	DESCRIPTION OF REVISION	BY DATE	APPR DATE	

WORK ORDER NO. R0471

BUCKEYE PARTNERS, L.P.
BUCKEYE PIPE LINE COMPANY, L.P.

CIVIL
BPL-FN405FJ-CA0006 - WELD MAP & PIPE DATA
HAN 75-14.39 I-75 8-INCH PIPELINE RELOCATION
CITY OF FINDLAY, HANCOCK COUNTY, OHIO

RC DRAWN: MEF
AS SHOWN SCALE: MEF/RC CHECKED:
DATE: 09/03/2015
BPL-FN405FJ-CA0006
DRAWING NUMBER

PAGE 6
DO NOT SCALE DRAWING