



0 20 40
HORIZONTAL SCALE IN FEET

CALCULATED LAB CHECKED ABS

DETENTION POND #2 DETAIL

HAN-75-14.39

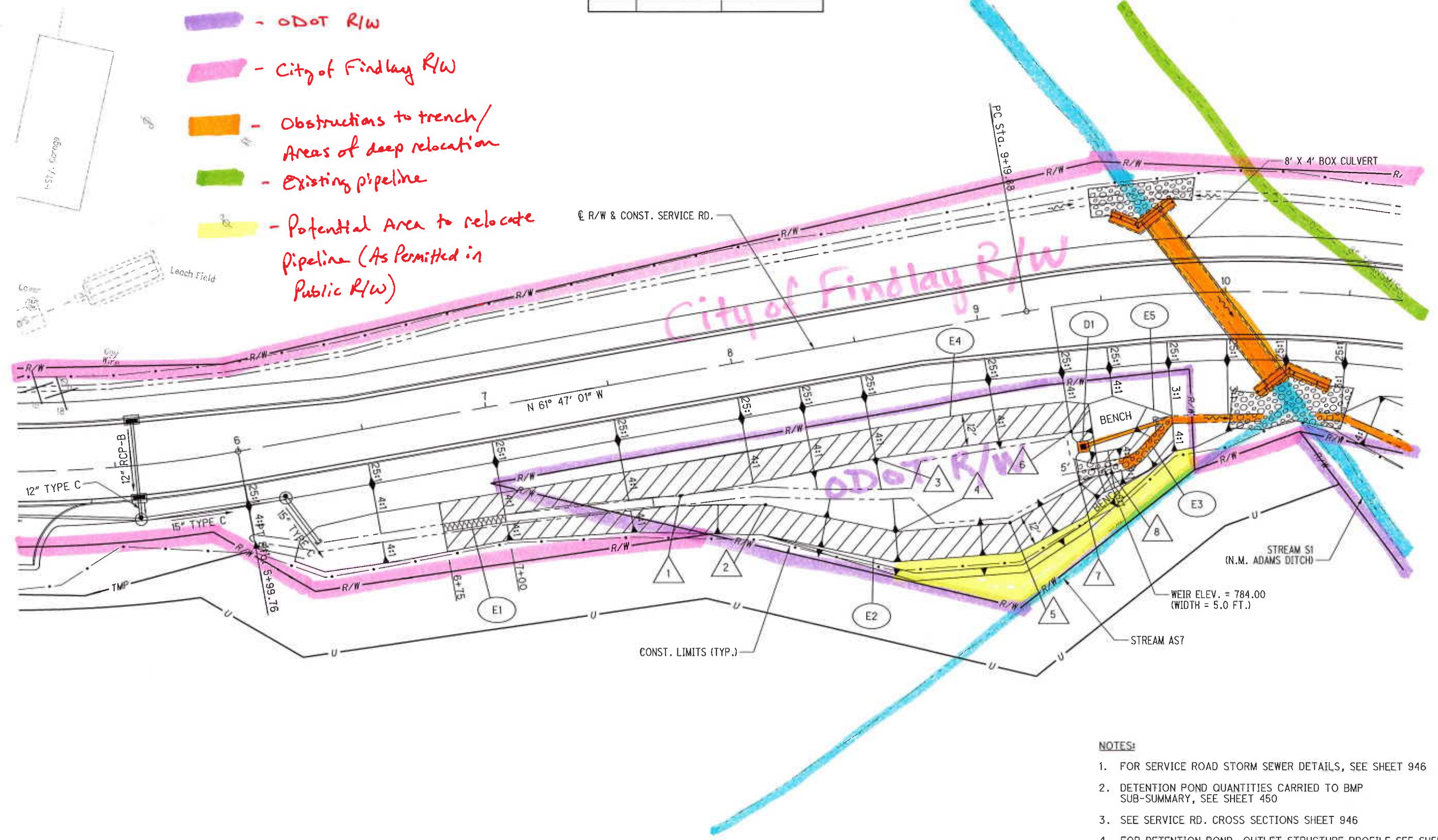
459
2034

POINT	STATION	OFFSET
1	7+70.56	48.13' RT.
2	8+03.40	57.45' RT.
3	8+50.00	47.07' RT.
4	8+52.68	76.90' RT.
5	8+98.61	81.44' RT.
6	9+30.00	49.85' RT.
7	9+30.28	71.02' RT.
8	9+45.24	68.32' RT.

DRAINAGE AREA:	1.83	AC
WQ _v	0.034	AC-FT
WQ _v (+20%)	0.040	AC-FT
Q ₁₀	3.35	CFS

- LEGEND:**
- ITEM 670 - SLOPE EROSION PROTECTION
 - ITEM 601 - TIED CONC. BLOCK MAT, TYPE 1
 - ITEM 601 - ROCK CHANNEL PROTECTION, TYPE C FABRIC FILTER (18" THICK)

- ODOT R/W
- City of Findlay R/W
- Obstructions to trench/
Areas of deep relocation
- Existing pipeline
- Potential Area to relocate
Pipeline (As Permitted in
Public R/W)



- NOTES:**
1. FOR SERVICE ROAD STORM SEWER DETAILS, SEE SHEET 946
 2. DETENTION POND QUANTITIES CARRIED TO BMP SUB-SUMMARY, SEE SHEET 450
 3. SEE SERVICE RD. CROSS SECTIONS SHEET 946
 4. FOR DETENTION POND OUTLET STRUCTURE PROFILE SEE SHEET 461
 5. FOR BOX CULVERT DETAILS, SEE SHEET 1238

T:\Projects\HAN\87005\drainage\sheet\B7005DM009.dgn 20-AUG-2014 10:49PM redder