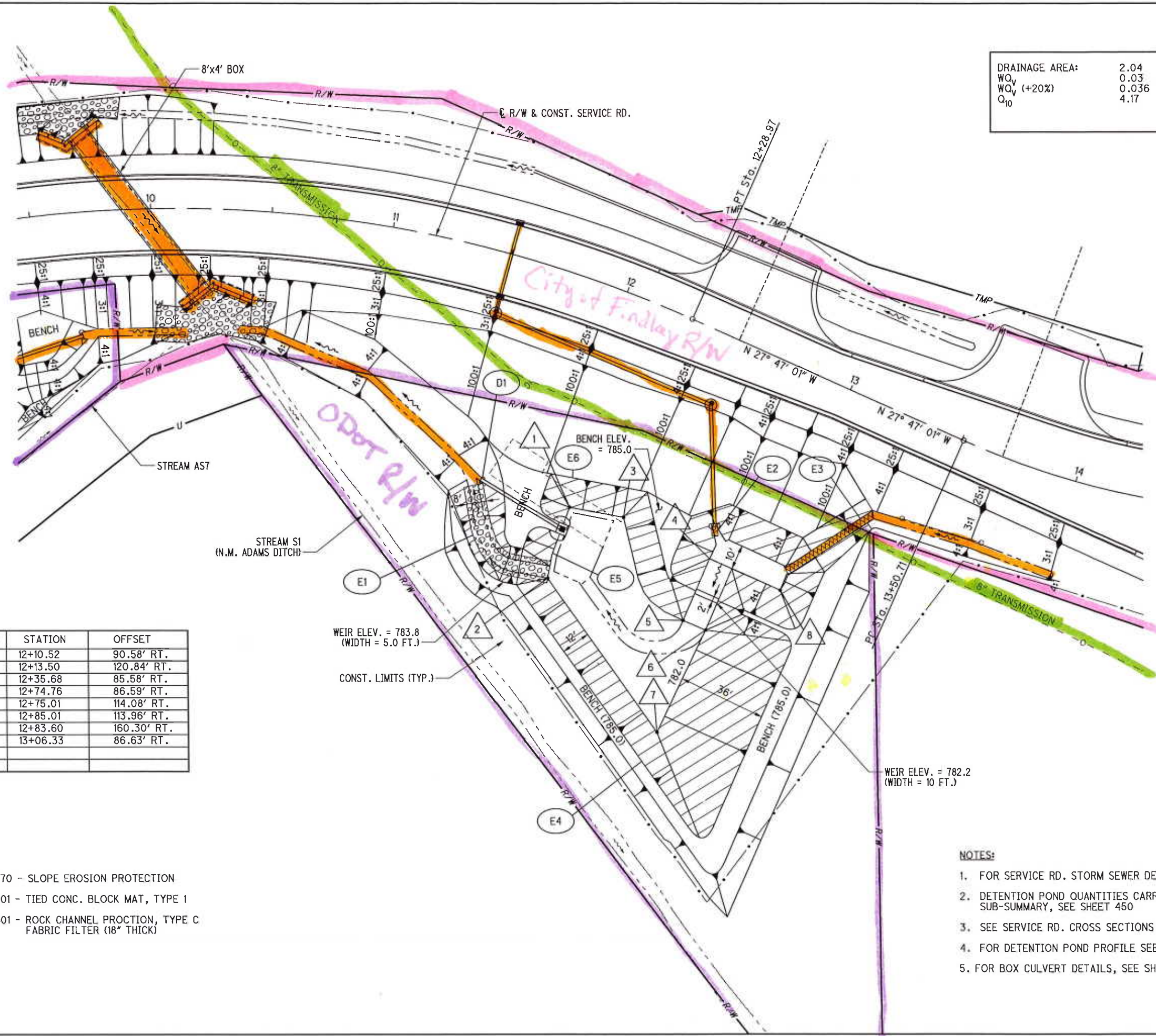


T:\Projects\HAN\87005\drainage\sheet\87005DM010.dgn 20-AUG-2014 10:49PM redder



DRAINAGE AREA:	2.04	AC
WQ <sub>v</sub>	0.03	AC-FT
WQ <sub>v</sub> (+20%)	0.036	AC-FT
Q <sub>10</sub>	4.17	CFS



POINT	STATION	OFFSET
1	12+10.52	90.58' RT.
2	12+13.50	120.84' RT.
3	12+35.68	85.58' RT.
4	12+74.76	86.59' RT.
5	12+75.01	114.08' RT.
6	12+85.01	113.96' RT.
7	12+83.60	160.30' RT.
8	13+06.33	86.63' RT.

- LEGEND:**
- ITEM 670 - SLOPE EROSION PROTECTION
  - ITEM 601 - TIED CONC. BLOCK MAT, TYPE 1
  - ITEM 601 - ROCK CHANNEL PROCTION, TYPE C FABRIC FILTER (18" THICK)

- NOTES:**
1. FOR SERVICE RD. STORM SEWER DETAILS, SEE SHEET 953
  2. DETENTION POND QUANTITIES CARRIED TO BMP SUB-SUMMARY, SEE SHEET 450
  3. SEE SERVICE RD. CROSS SECTIONS SHEET 954
  4. FOR DETENTION POND PROFILE SEE SHEET 461
  5. FOR BOX CULVERT DETAILS, SEE SHEET 1238

**DETENTION POND #3 DETAILS**

**HAN-75-14.39**

460  
2034