

Construction Access from Marathon Blvd.

Heath - National Junction 6" - Excavate and reclaim from casing to pig trap.

Heath - National Junction 6" - Pull pipe from existing casing, cap, grout, and fill casing.

Trotten Ave

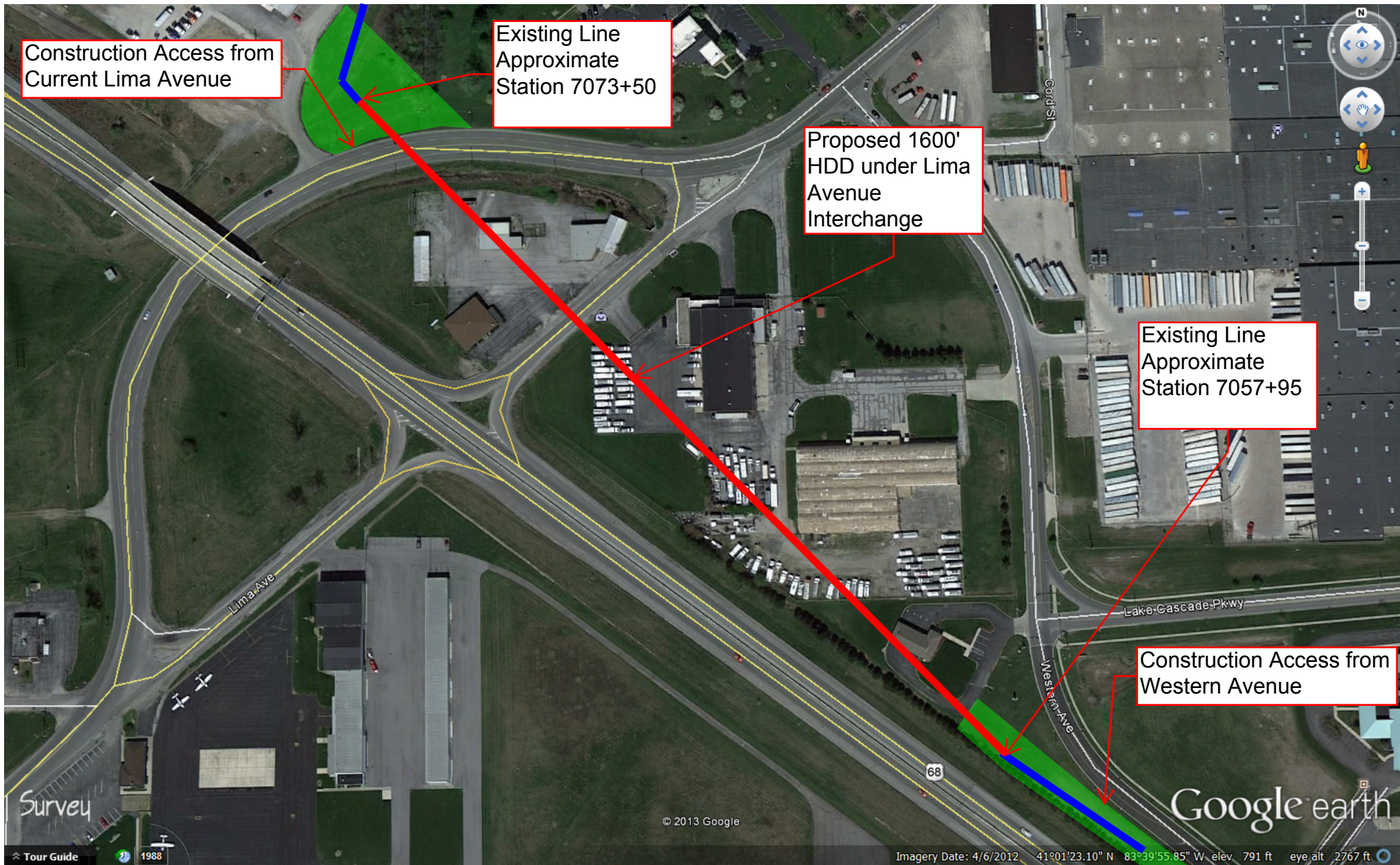
Construction Access from Findlay Station

Approximate new ODOT proposed R/W

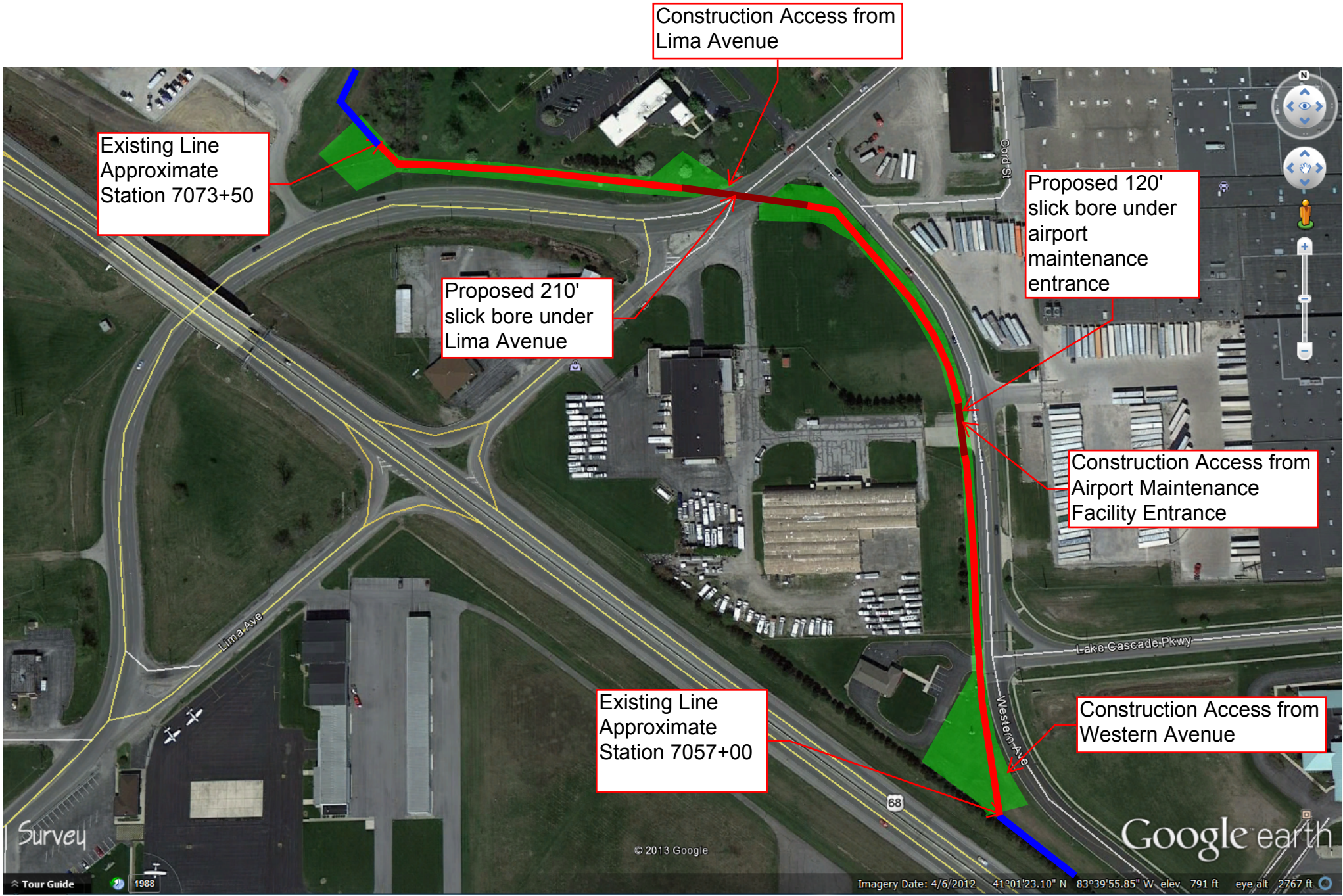


Heath - Findlay 8" - Reroute ~1700 ft. of pipeline up to 90 ft. east of existing line

**MPL HEFI 8" Products Line
Findlay - National Junction 6"
I-75 Widening**



**MPL HEFI 8" Products Line - Proposed I-75 Widening
HDD Option**



**MPL HEFI 8" Products Line - Proposed I-75 Widening
Open Trench - Slick Bore Option**