

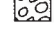


T:\Projects\HAN\87005\drainage\sheet\B7005DM009.dgn 20-AUG-2014 10:49PM redderj

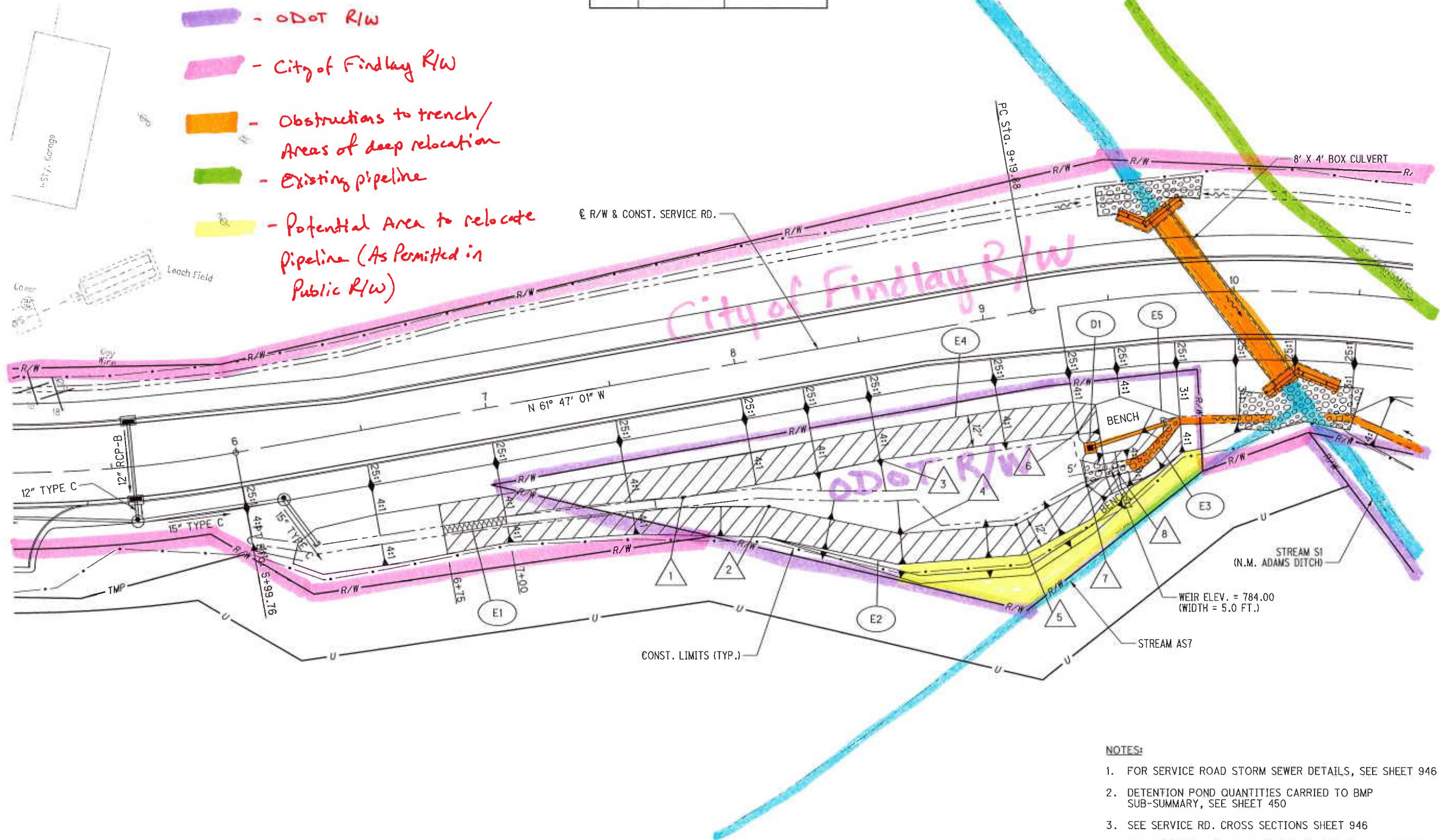
LEGEND:

-  ITEM 670 - SLOPE EROSION PROTECTION
-  ITEM 601 - TIED CONC. BLOCK MAT, TYPE 1
-  ITEM 601 - ROCK CHANNEL PROTECTION, TYPE C FABRIC FILTER (18" THICK)

-  - ODOT R/W
-  - City of Findlay R/W
-  - Obstructions to trench/
Areas of deep relocation
-  - Existing pipeline
-  - Potential Area to relocate
Pipeline (As Permitted in
Public R/W)

| POINT | STATION | OFFSET |
|-------|---------|------------|
| 1 | 7+70.56 | 48.13' RT. |
| 2 | 8+03.40 | 57.45' RT. |
| 3 | 8+50.00 | 47.07' RT. |
| 4 | 8+52.68 | 76.90' RT. |
| 5 | 8+98.61 | 81.44' RT. |
| 6 | 9+30.00 | 49.85' RT. |
| 7 | 9+30.28 | 71.02' RT. |
| 8 | 9+45.24 | 68.32' RT. |

| | | |
|------------------------|-------|-------|
| DRAINAGE AREA: | 1.83 | AC |
| WQ _v | 0.034 | AC-FT |
| WQ _v (+20%) | 0.040 | AC-FT |
| Q ₁₀ | 3.35 | CFS |



- NOTES:**
- FOR SERVICE ROAD STORM SEWER DETAILS, SEE SHEET 946
 - DETENTION POND QUANTITIES CARRIED TO BMP SUB-SUMMARY, SEE SHEET 450
 - SEE SERVICE RD. CROSS SECTIONS SHEET 946
 - FOR DETENTION POND OUTLET STRUCTURE PROFILE SEE SHEET 461
 - FOR BOX CULVERT DETAILS, SEE SHEET 1238





HORIZONTAL SCALE IN FEET

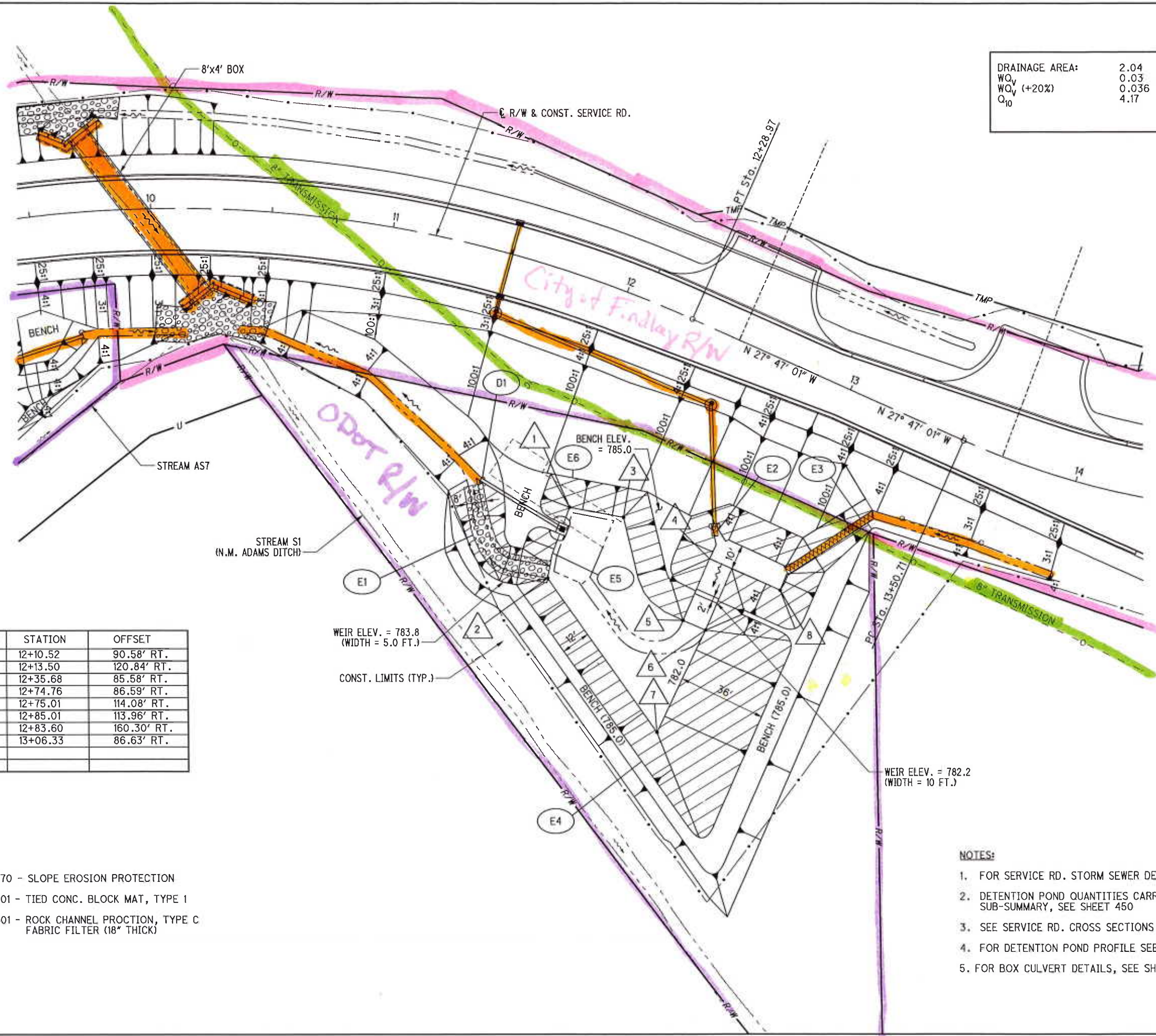
CALCULATED LAB CHECKED ABS

DETENTION POND #2 DETAIL

HAN-75-14.39

459
2034

T:\Projects\HAN\87005\drainage\sheet\87005DM010.dgn 20-AUG-2014 10:49PM redder



| | | |
|------------------------|-------|-------|
| DRAINAGE AREA: | 2.04 | AC |
| WQ _v | 0.03 | AC-FT |
| WQ _v (+20%) | 0.036 | AC-FT |
| Q ₁₀ | 4.17 | CFS |



| POINT | STATION | OFFSET |
|-------|----------|-------------|
| 1 | 12+10.52 | 90.58' RT. |
| 2 | 12+13.50 | 120.84' RT. |
| 3 | 12+35.68 | 85.58' RT. |
| 4 | 12+74.76 | 86.59' RT. |
| 5 | 12+75.01 | 114.08' RT. |
| 6 | 12+85.01 | 113.96' RT. |
| 7 | 12+83.60 | 160.30' RT. |
| 8 | 13+06.33 | 86.63' RT. |

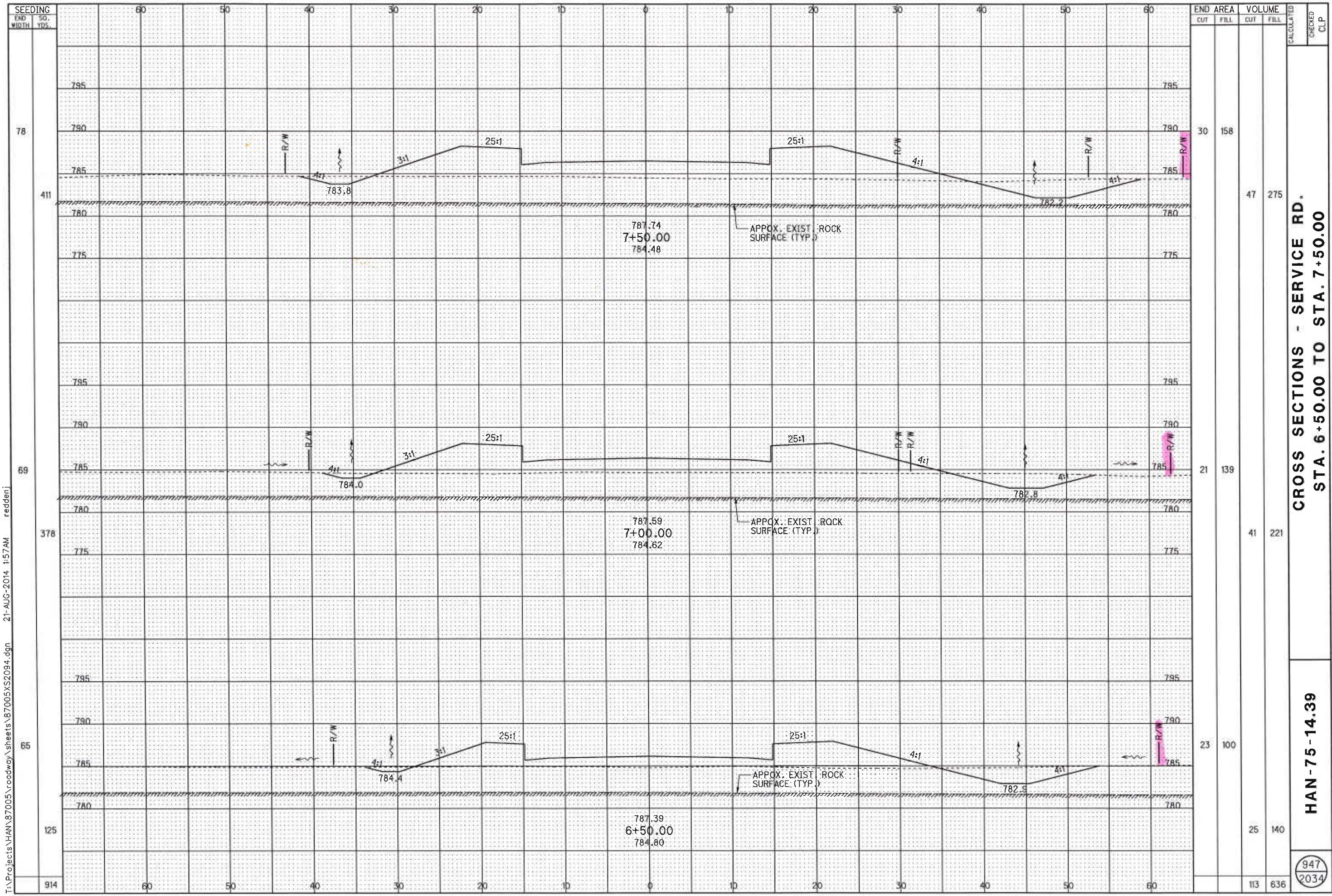
- LEGEND:**
- ITEM 670 - SLOPE EROSION PROTECTION
 - ITEM 601 - TIED CONC. BLOCK MAT, TYPE 1
 - ITEM 601 - ROCK CHANNEL PROCTION, TYPE C FABRIC FILTER (18" THICK)

- NOTES:**
1. FOR SERVICE RD. STORM SEWER DETAILS, SEE SHEET 953
 2. DETENTION POND QUANTITIES CARRIED TO BMP SUB-SUMMARY, SEE SHEET 450
 3. SEE SERVICE RD. CROSS SECTIONS SHEET 954
 4. FOR DETENTION POND PROFILE SEE SHEET 461
 5. FOR BOX CULVERT DETAILS, SEE SHEET 1238

DETENTION POND #3 DETAILS

HAN-75-14.39

460
2034



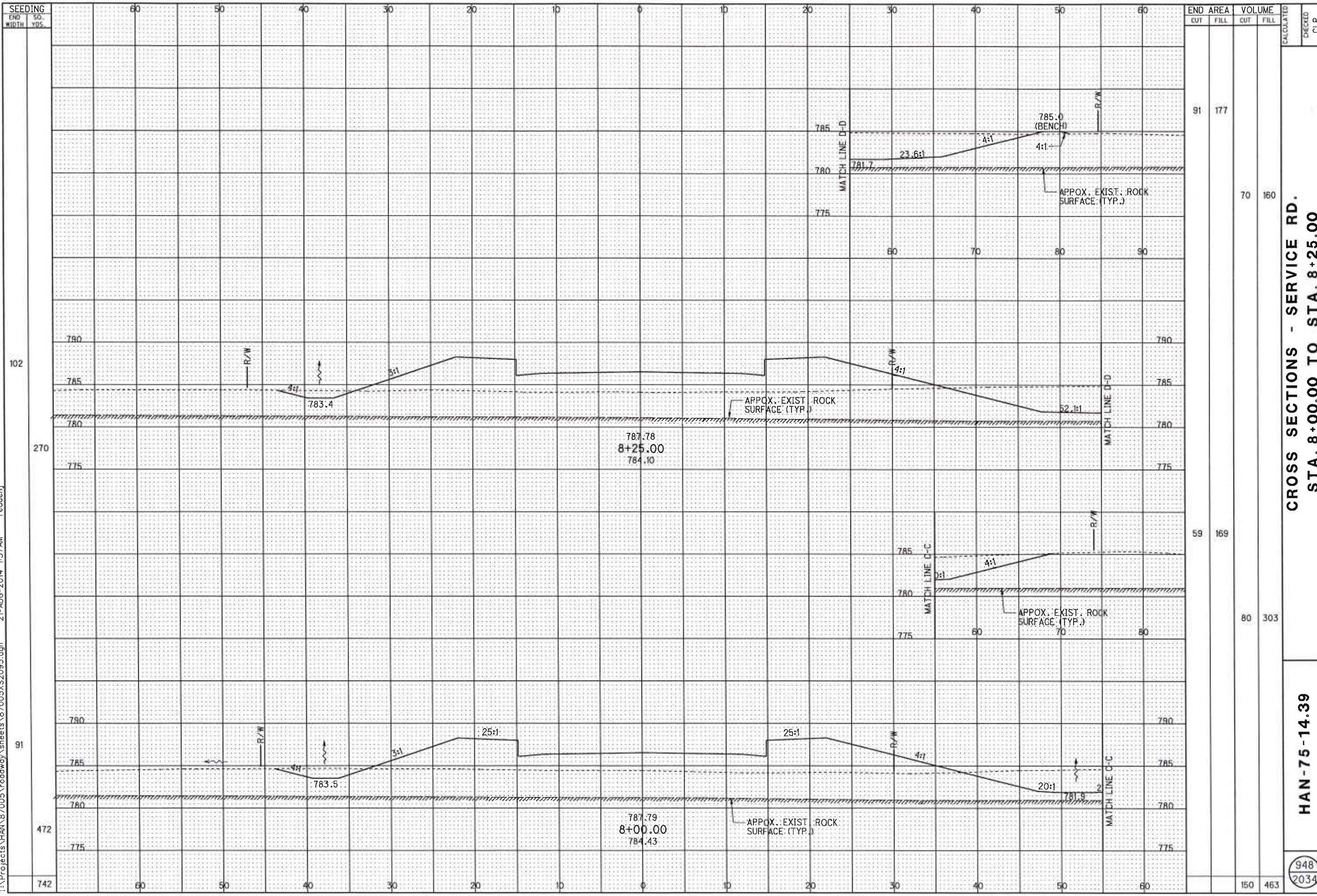
T:\Projects\HAN\87005\roadway\sheets\87005XS2094.dgn 21-AUG-2014 1:57AM redderj

CROSS SECTIONS - SERVICE RD.
STA. 6+50.00 TO STA. 7+50.00

HAN-75-14.39

947
2034

T:\Projects\HAN\87005\roadway\sheet\87005XS2095.dgn 21-AUG-2014 1:57AM reddnj

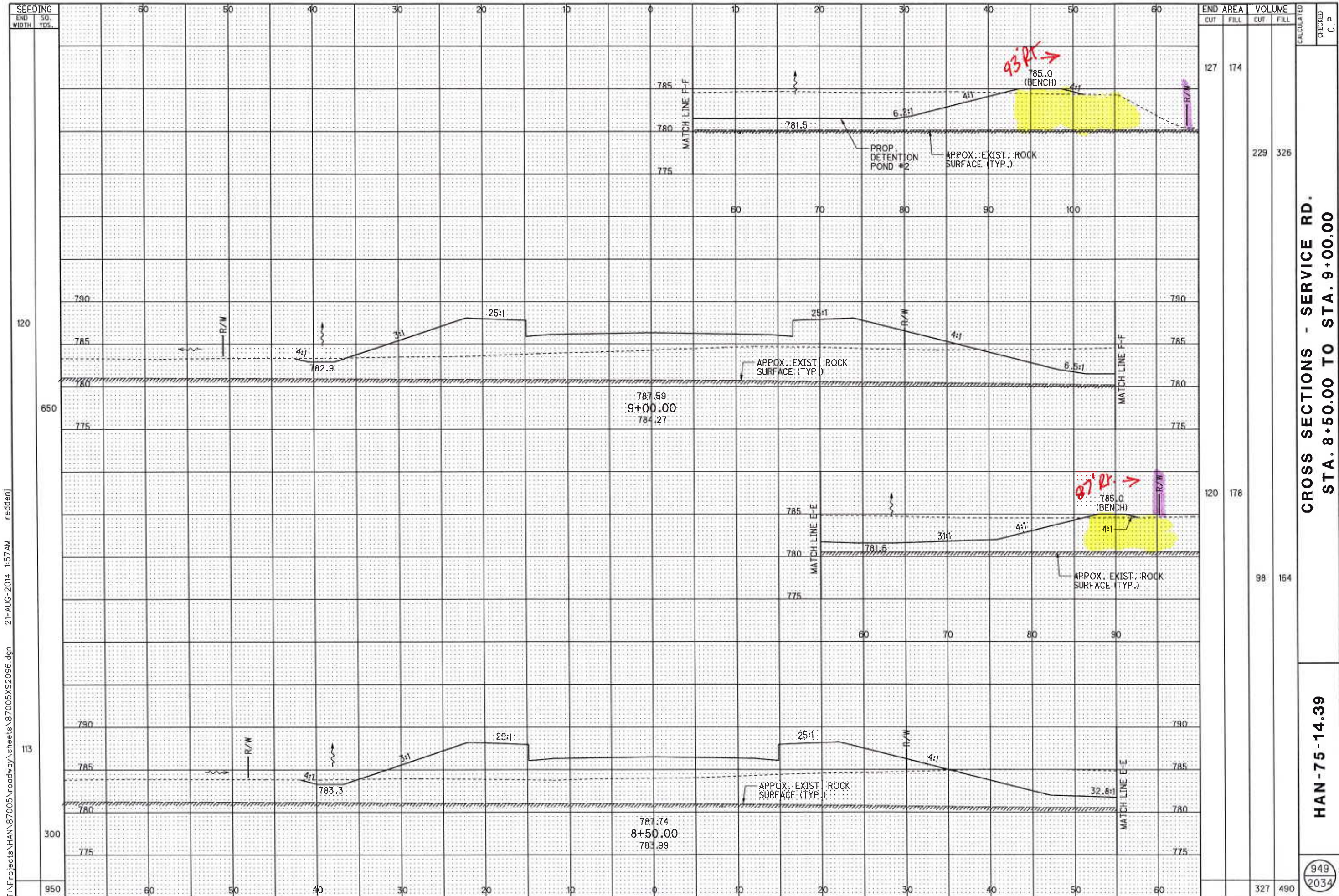


| STATION | END AREA | | VOLUME | | CHECKED | C.P. |
|---------|----------|------|--------|------|---------|------|
| | CUT | FILL | CUT | FILL | | |
| 91 | | 177 | | | | |
| 70 | | | 70 | 160 | | |
| 59 | | 169 | | | | |
| 80 | | | 80 | 303 | | |
| 150 | | | 150 | 463 | | |

**CROSS SECTIONS - SERVICE RD.
STA. 8+00.00 TO STA. 8+25.00**

HAN-75-14.39

948
2034



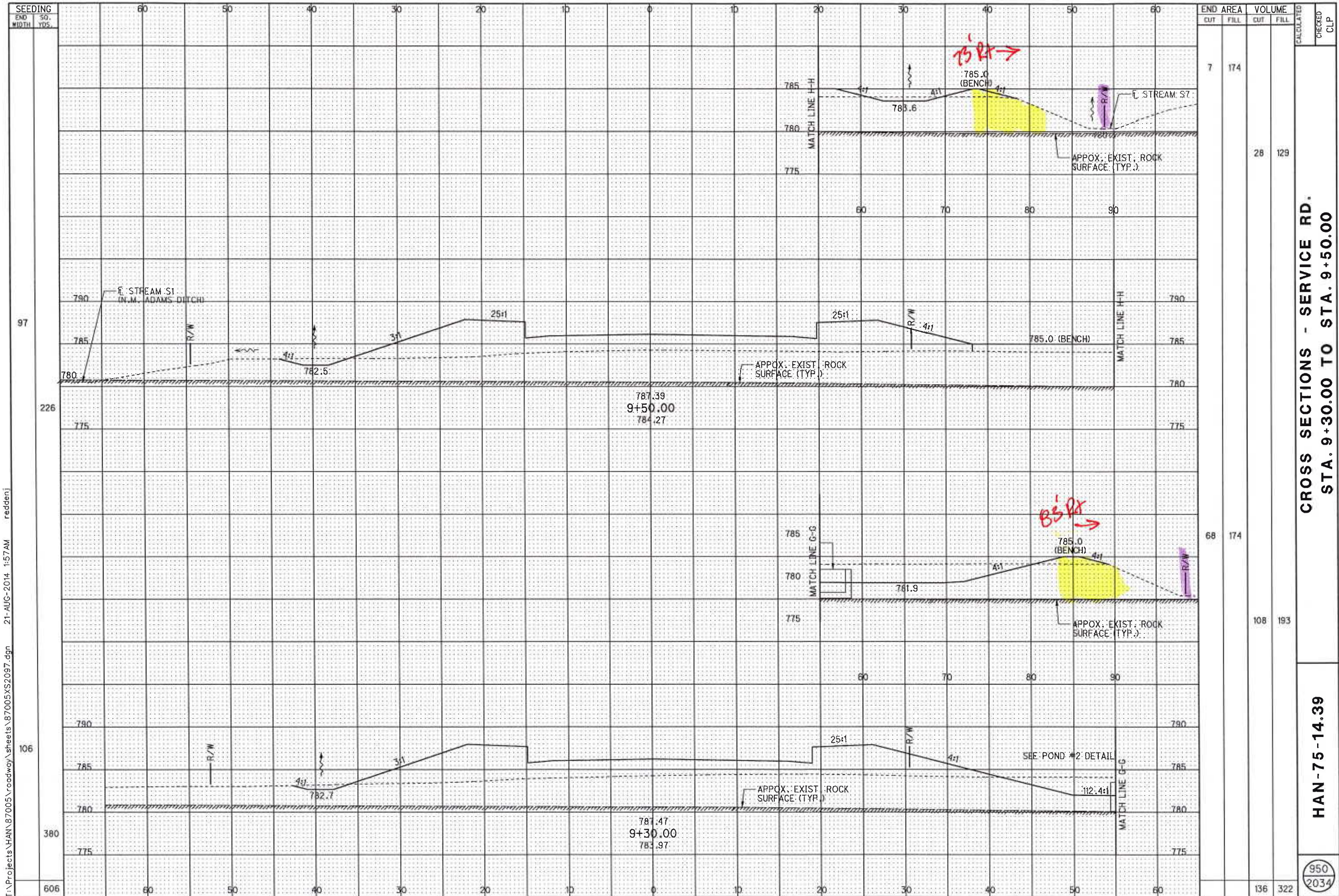
| SEEDING END WIDTH | 50. YDS. | END AREA | | VOLUME | | CALCULATED | CHECKED | CLP |
|-------------------------|-------------|----------|------|--------|------|------------|---------|-----|
| | | CUT | FILL | CUT | FILL | | | |
| | | 127 | 174 | | | | | |
| | | | | 229 | 326 | | | |
| | | 120 | 178 | | | | | |
| | | | | 98 | 164 | | | |
| | | 113 | | | | | | |
| | | | | | | | | |
| | | 300 | | | | | | |
| | | | | | | | | |
| | | 950 | | | | | | |
| | | | | 327 | 490 | | | |

CROSS SECTIONS - SERVICE RD.
STA. 8+50.00 TO STA. 9+00.00

HAN-75-14.39

949
2034

T:\Projects\HAN\87005\roadway\sheets\87005XS2096.dgn 21-AUG-2014 1:57AM redderj



SEEDING
END 50.
WIDTH YDS.

97
226
106
380
606

60 50 40 30 20 10 0 10 20 30 40 50 60

790
785
780
775

785
780
775

780
785
790

785
780
775

780
785
790

785
780
775

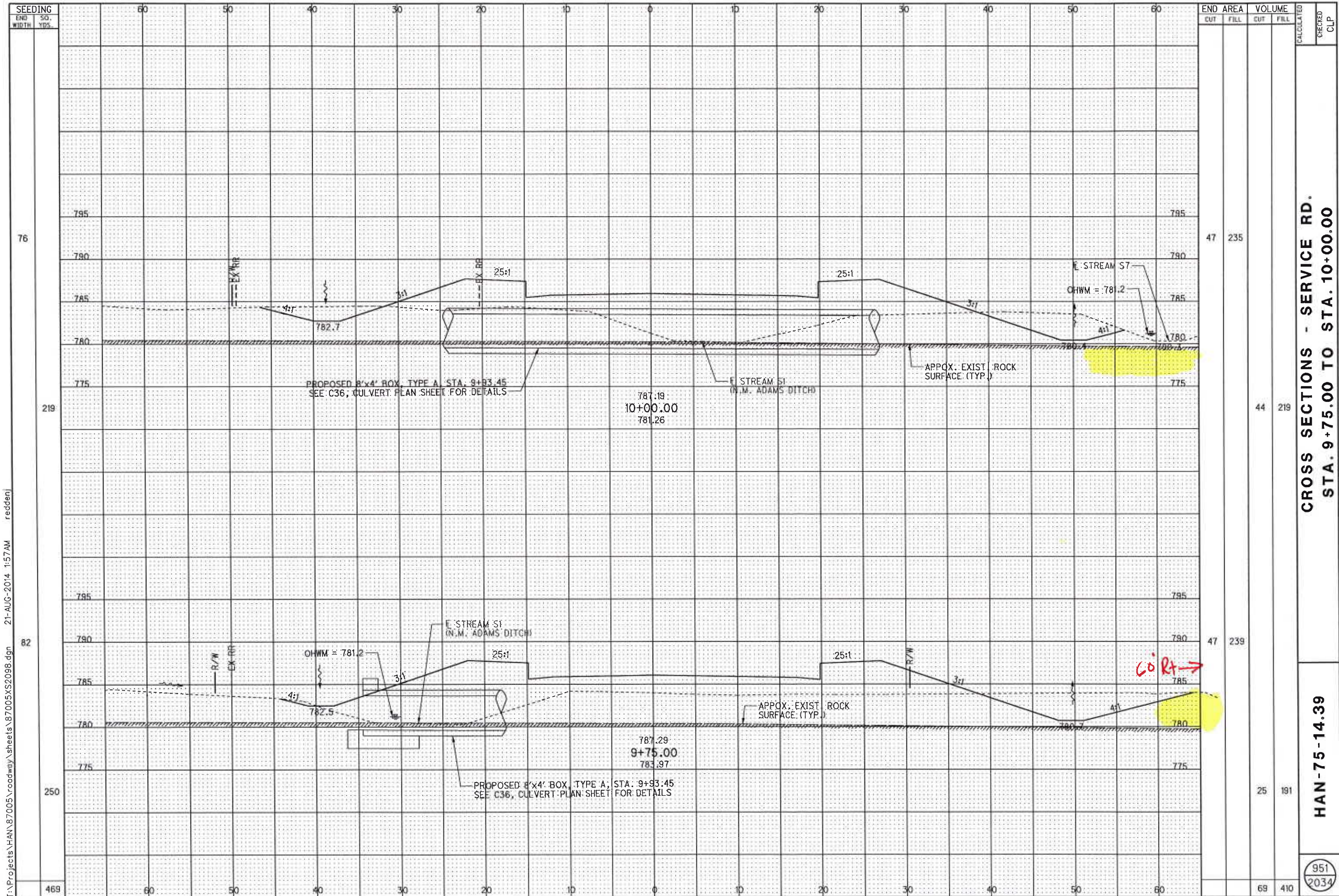
| END STA. | AREA | | VOLUME | | CALCULATED | CHECKED | CLP |
|----------|------|------|--------|------|------------|---------|-----|
| | CUT | FILL | CUT | FILL | | | |
| 9+30.00 | 7 | 174 | 28 | 129 | | | |
| 9+50.00 | 68 | 174 | 108 | 193 | | | |
| TOTAL | 75 | 348 | 136 | 322 | | | |

CROSS SECTIONS - SERVICE RD.
STA. 9+30.00 TO STA. 9+50.00

HAN-75-14.39

950
2034

T:\Projects\HAN\87005\roadway\sheet\87005XS2097.dgn 21-AUG-2014 1:57AM redderj



SEEDING
END SO. WIDTH YDS.

76
219
82
250
469

60 50 40 30 20 10 0 10 20 30 40 50 60

795
790
785
780
775

795
790
785
780
775

795
790
785
780
775

60 50 40 30 20 10 0 10 20 30 40 50 60

| END CUT | AREA FILL | VOLUME | | CALCULATED | CHECKED | CLP |
|---------|-----------|--------|------|------------|---------|-----|
| | | CUT | FILL | | | |
| 47 | 235 | | | | | |
| 44 | 219 | | | | | |
| 47 | 239 | | | | | |
| 25 | 191 | | | | | |
| 69 | 410 | | | | | |

CROSS SECTIONS - SERVICE RD.
STA. 9+75.00 TO STA. 10+00.00

HAN-75-14.39

951
2034

T:\Projects\HAN\87005\roadway\sheet\87005XS2098.dgn 21-AUG-2014 1:57AM redderj