

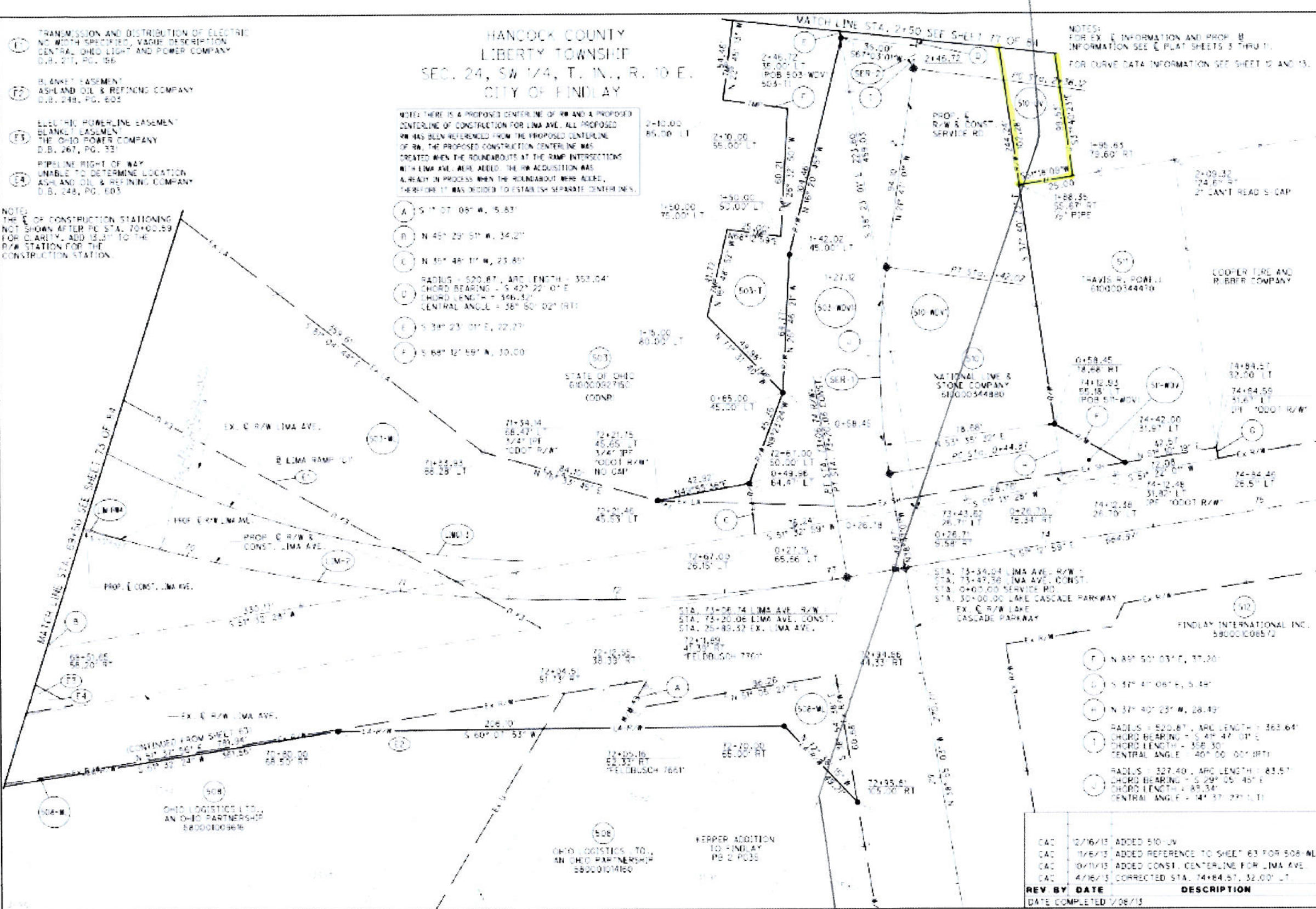
- 1 TRANSMISSION AND DISTRIBUTION OF ELECTRIC NO. WITH SPECIFIED, VARIOUS DESCRIPTION CENTRA. OHIO LIGHT AND POWER COMPANY D.B. 217, PG. 156
- 2 BLANKET EASEMENT ASHLAND OIL & REFINING COMPANY D.B. 248, PG. 602
- 3 ELECTRIC POWERLINE EASEMENT BLANKET EASEMENT THE OHIO POWER COMPANY D.B. 267, PG. 33
- 4 PIPELINE RIGHT OF WAY UNABLE TO DETERMINE LOCATION ASHLAND OIL & REFINING COMPANY D.B. 248, PG. 602

HANCOCK COUNTY
LIBERTY TOWNSHIP
SEC. 24, SW 1/4, T. 1N., R. 10 E.
CITY OF FINDLAY

NOTE: THERE IS A PROPOSED CENTERLINE OF RW AND A PROPOSED CENTERLINE OF CONSTRUCTION FOR LIMA AVE. ALL PROPOSED RW HAS BEEN REFERENCED FROM THE PROPOSED CENTERLINE OF RW. THE PROPOSED CONSTRUCTION CENTERLINE WAS CREATED WHEN THE ROUNDABOUTS AT THE RAMP INTERSECTIONS WITH LIMA AVE. WERE ADDED. THE RW ACQUISITION WAS ALREADY IN PROCESS WHEN THE ROUNDABOUTS WERE ADDED. THEREFORE IT WAS DECIDED TO ESTABLISH SEPARATE CENTERLINES.

- A S 1° 07' 05" W, 5.83'
- B N 45° 23' 51" W, 34.21'
- C N 51° 48' 11" W, 23.80'
- D RADIUS = 520.87', ARC LENGTH = 352.04'
CHORD BEARING = S 42° 22' 01" E
CHORD LENGTH = 346.53'
CENTRAL ANGLE = 58° 50' 02" (RT)
- E S 38° 23' 01" E, 22.27'
- F S 68° 12' 59" N, 30.00'

NOTE:
THE E OF CONSTRUCTION STATIONING NOT SHOWN AFTER PC STA. 70+00.59 FOR CLARITY, ADD 15.21' TO THE R/W STATION FOR THE CONSTRUCTION STATION.



NOTES:
FOR EX. E INFORMATION AND PROP. B INFORMATION SEE E PLAT SHEETS 3 THRU 11.
FOR CURVE DATA INFORMATION SEE SHEET 12 AND 13.

RIGHT OF WAY BOUNDARY SHEET
LIMA AVE.
STA. 69-50 TO END WORK

HAN-75-14.39
PHASE 1

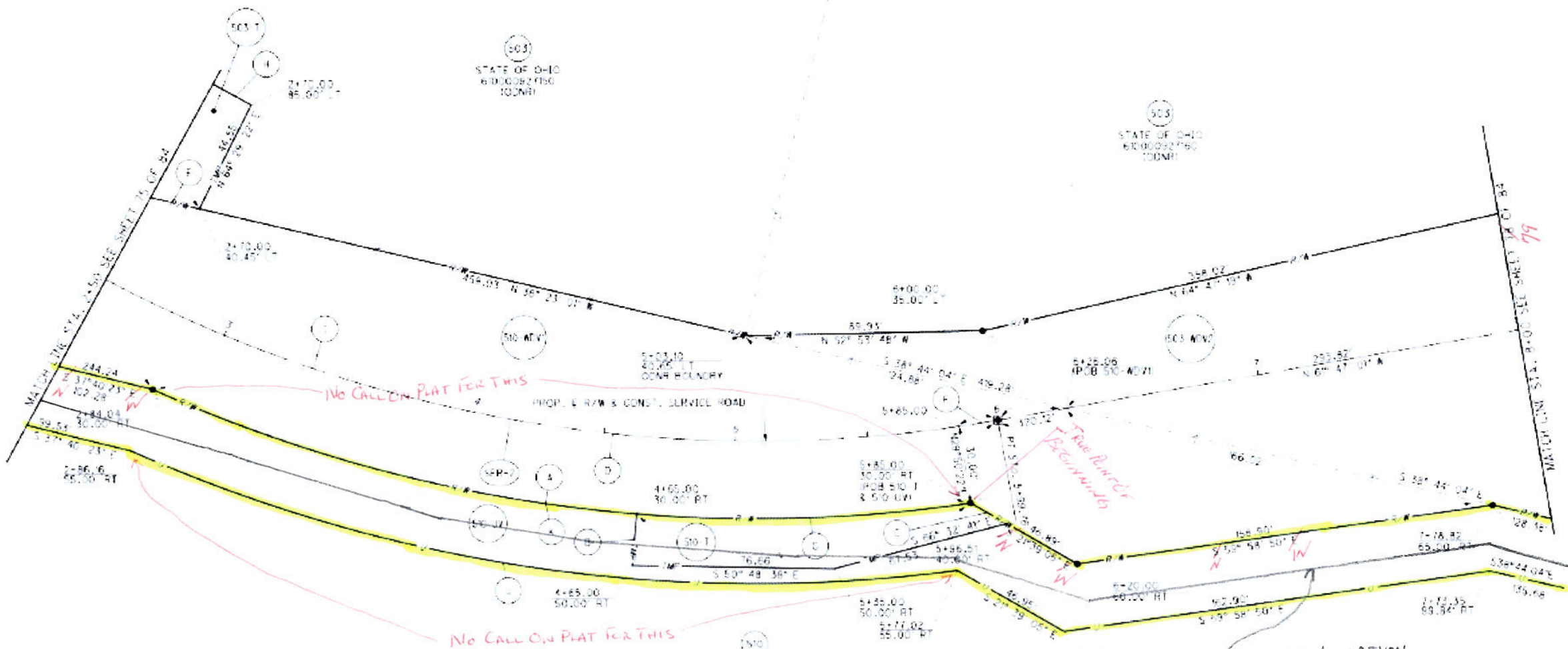
PID NO. 87005

DATE COMPLETED 7/08/13

REV. BY	DATE	DESCRIPTION
CAC	12/16/13	ADDED 510 UV
CAC	11/6/13	ADDED REFERENCE TO SHEET 63 FOR 508-ML
CAC	10/11/13	ADDED CONST. CENTERLINE FOR LIMA AVE.
CAC	4/16/13	CORRECTED STA. 74+84.91, 32.00' LT

APPROX. LOCATION
NEW 8" PIPELINE
MARATHON

HANCOCK COUNTY
LIBERTY TOWNSHIP
SEC. 24, SW 1/4, T. 1N., R. 10 E.
CITY OF FINDLAY



- (A) RADIUS = 550.87', ARC LENGTH = 318.30'
CHORD BEARING = S 43° 36' 27" E
CHORD LENGTH = 313.89'
CENTRAL ANGLE = 33° 06' 22" (RT)
- (B) S 43° 02' 22" W, 20.00'
- (C) N 21° 29' 02" E, 75.84'
- (D) RADIUS = 520.87', ARC LENGTH = 353.04'
CHORD BEARING = S 42° 22' 07" E
CHORD LENGTH = 346.22'
CENTRAL ANGLE = 38° 50' 02" (RT)
- (E) S 38° 23' 01" E, 27.27'
- (F) RADIUS = 520.87', ARC LENGTH = 14.78'
CHORD BEARING = S 60° 58' 20" E
CHORD LENGTH = 4.75'
CENTRAL ANGLE = 7° 57' 23" (RT)
- (G) RADIUS = 550.87', ARC LENGTH = 126.91'
CHORD BEARING = N 53° 31' 38" W
CHORD LENGTH = 126.63'
CENTRAL ANGLE = 10° 12' 00" (LT)
- (H) N 22° 45' 13" W, 54.36'
- (I) RADIUS = 520.87', ARC LENGTH = 161.64'
CHORD BEARING = S 41° 47' 01" E
CHORD LENGTH = 156.30'
CENTRAL ANGLE = 40° 00' 00" (RT)
- (J) RADIUS = 575.87', ARC LENGTH = 321.88'
CHORD BEARING = S 43° 17' 04" E
CHORD LENGTH = 311.42'
CENTRAL ANGLE = 37° 59' 42" (RT)
- (K) RADIUS = 550.87', ARC LENGTH = 318.30'
CHORD BEARING = N 43° 30' 27" W
CHORD LENGTH = 313.89'
CENTRAL ANGLE = 33° 06' 22" (LT)

APPROX. LOCATION
NEW 8" PIPELINE
MARATHON

NOTES:
FOR EX. E INFORMATION AND PROF. B
INFORMATION SEE E PLAT SHEETS 3 THRU 11.
FOR CURVE DATA INFORMATION SEE SHEET 12 AND 13.

REV.	DATE	DESCRIPTION
001	12/16/13	ADDED 510-LV
002	1/08/13	

RIGHT OF WAY BOUNDARY SHEET
SERVICE ROAD
STA. 2+50 TO STA. 8+00

HAN-75-14.39
PHASE 1

11/84

P.L.D. NO. 87005

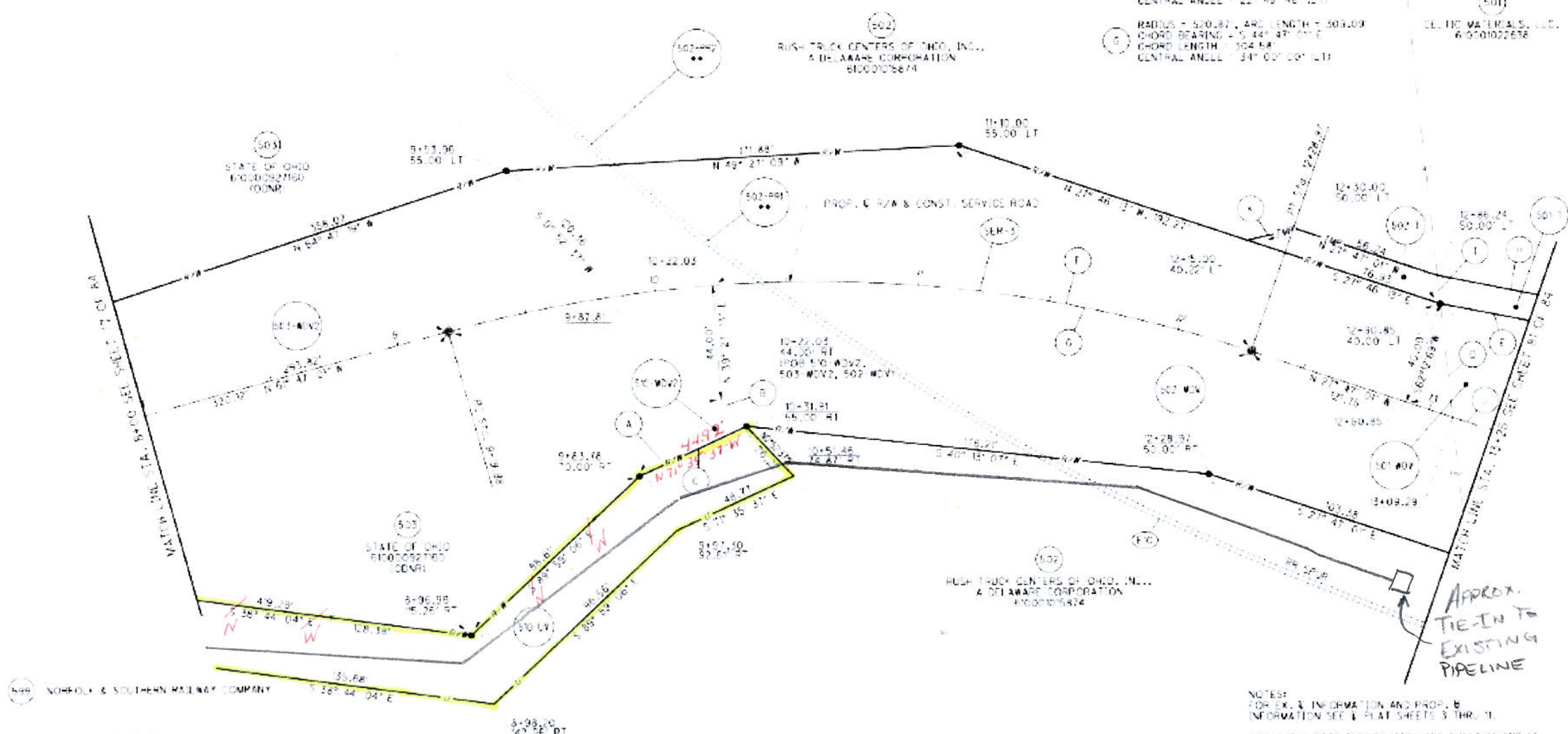
L.M. R.T.

HORIZONTAL SCALE IN FEET

HANCOCK COUNTY
LIBERTY TOWNSHIP
SEC. 24, SW 1/4, T. 10 N., R. 10 E.
CITY OF FINDLAY

- A S 89° 58' 00" E, 42.84'
- B S 0° 52' 37" W, 14.17'
- C S 71° 25' 37" E, 44.92'
- D S 37° 27' 55" W, 33.10'
- L N 35° 27' 46" W, 15.29'
- F RADIUS = 520.82', ARC LENGTH = 206.93'
CHORD BEARING = S 39° 09' 04" E
CHORD LENGTH = 205.54'
CENTRAL ANGLE = 22° 45' 48" (L)
- G RADIUS = 520.82', ARC LENGTH = 503.09'
CHORD BEARING = S 44° 47' 01" E
CHORD LENGTH = 504.54'
CENTRAL ANGLE = 34° 00' 00" (L)
- H N 35° 06' 00" W, 17.45'
- I S 37° 27' 55" W, 11.01'
- J S 27° 47' 01" E, 59.86'
- K N 69° 37' 13" W, 16.32'

HAN-75-14.39
 PHASE 1
 RIGHT OF WAY BOUNDARY SHEET
 SERVICE ROAD
 STA. 8+00 TO STA. 13+25
 RID. NO. 87005
 13/84



BLANKET EASEMENT TO CENTRAL OHIO LIGHT & POWER CO. D.B. 211, PG. 289 D.B. 211, PG. 290

20' RAILROAD EASEMENT THE NEW YORK, CHICAGO AND ST. LOUIS RAILROAD COMPANY, IAKA NORFOLK SOUTHERN CORPORATION D.B. 15A, PG. 10

NOTES:
 FOR EX. & INFORMATION AND PROP. B INFORMATION SEE PLAT SHEETS 3 THRU 11.
 FOR CURVE DATA INFORMATION SEE SHEET 12 AND 13.
 ** FOR RR PLAT OF 502-PRI & 502-PRO, SEE SHEET #4A.

REV	BY	DATE	DESCRIPTION
CAC		12/16/13	ADDED 510-IV
CAC		4/22/15	CHANGED 599-PRR TO 502-PRR; ADDED 502-PRR REVISION RR PLAT REFERENCE NOTE
CAC		4/16/15	FIXED POB LABEL FOR 502-WCV
CAC		3/22/15	ADDED LABEL FOR 599-PRR AND NOTE
CAC		1/24/15	CHANGED E1 TO E10; UPDATED 502 OWNER

DATE COMPLETED 7/08/13

ELC

NATIONAL LIME & STONE COMPANY
670000241680

RUSH TRUCK CENTERS OF OHIO, INC.
A DELAWARE CORPORATION
61000105474

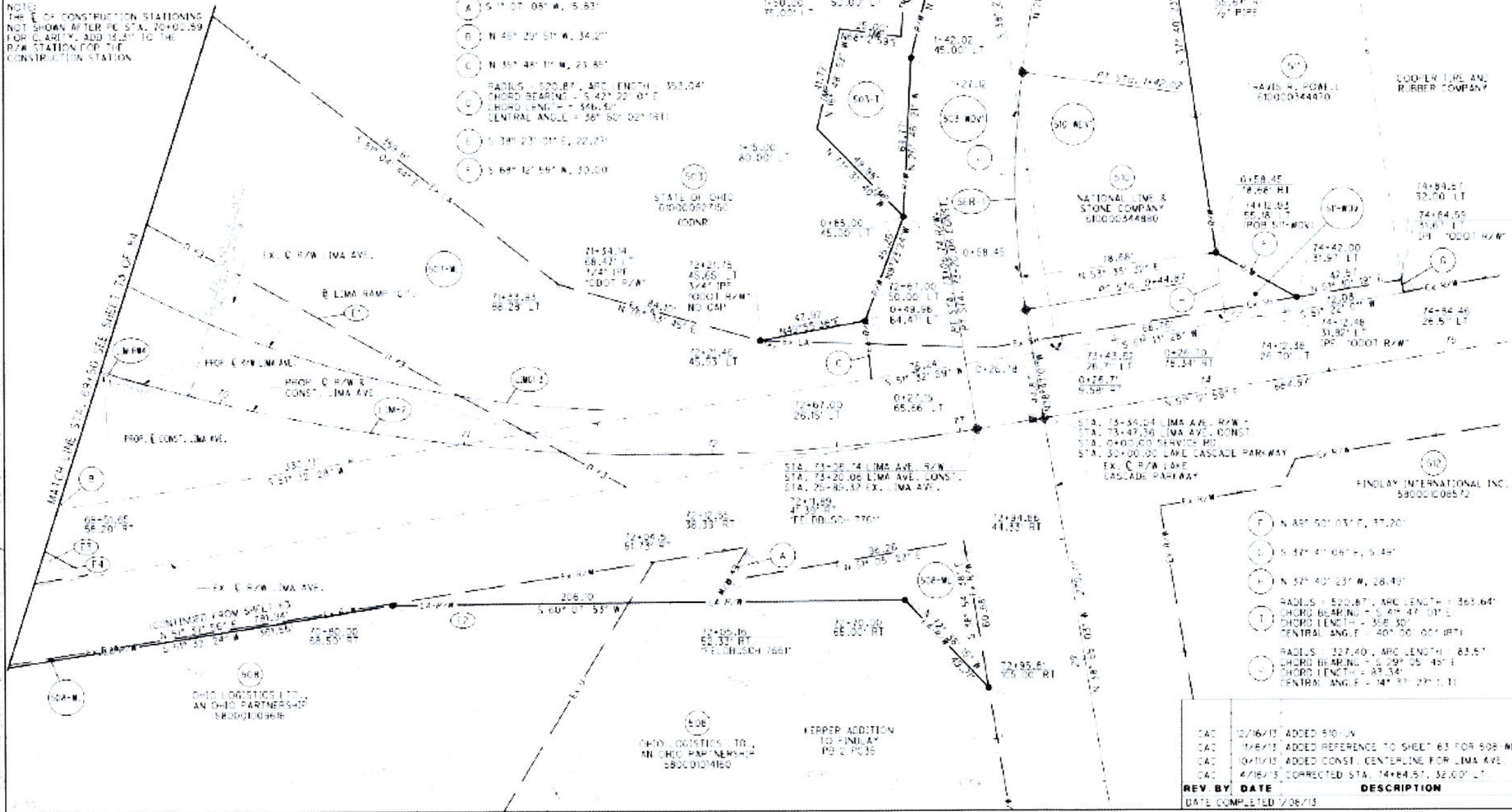
APPROX. TIE-IN TO EXISTING PIPELINE

HANCOCK COUNTY
LIBERTY TOWNSHIP
SEC. 24, SW 1/4, T. 1 N., R. 10 E.
CITY OF FINDLAY

- 1 TRANSMISSION AND DISTRIBUTION OF ELECTRIC NO WIDTH SPECIFIED, VARIOUS DESCRIPTION, CENTRAL OHIO LIGHT AND POWER COMPANY, D.B. 217, PG. 86
- 2 E. BLANKET EASEMENT ASHLAND OIL & REFINING COMPANY, D.B. 248, PG. 602
- 3 ELECTRIC POWERLINE EASEMENT BLANKET EASEMENT THE OHIO POWER COMPANY, D.B. 267, PG. 337
- 4 PIPELINE RIGHT OF WAY UNABLE TO DETERMINE LOCATION ASHLAND OIL & REFINING COMPANY, D.B. 248, PG. 602

NOTE: THERE IS A PROPOSED CENTERLINE OF RW AND A PROPOSED CENTERLINE OF CONSTRUCTION FOR LIMA AVE. ALL PROPOSED RW HAS BEEN REFERENCED FROM THE PROPOSED CENTERLINE OF RW. THE PROPOSED CONSTRUCTION CENTERLINE WAS CREATED WHEN THE ROUNDABOUTS AT THE RAMP INTERSECTIONS WITH LIMA AVE. WERE ADDED. THE RW ACQUISITION WAS ALREADY IN PROCESS WHEN THE ROUNDABOUT WERE ADDED, THEREFORE IT WAS DECIDED TO ESTABLISH SEPARATE CENTERLINES.

- A S 17° 07' 08" W, 15.63'
- B N 48° 29' 51" W, 34.27'
- C N 39° 48' 11" W, 23.85'
- D RADIUS = 520.87', ARC LENGTH = 353.04', CHORD BEARING = S 42° 22' 01" E, CHORD LENGTH = 346.50', CENTRAL ANGLE = 36° 50' 02" (RT)
- E S 38° 23' 01" E, 22.27'
- F S 64° 12' 59" N, 30.00'



NOTES:
FOR EX. E INFORMATION AND PROP. B INFORMATION SEE E PLAT SHEETS 3 THROUGH 11.
FOR CURVE DATA INFORMATION SEE SHEET 12 AND 13.

RIGHT OF WAY BOUNDARY SHEET
LIMA AVE.
STA. 69-50 TO END WORK

HAN-75-14.39
PHASE 1

PID NO. 87005

DATE COMPLETED 7/26/13

- G N 89° 50' 03" E, 37.20'
- H S 37° 41' 08" E, 5.48'
- I N 37° 40' 23" W, 28.43'
- J RADIUS = 520.87', ARC LENGTH = 363.64', CHORD BEARING = S 49° 47' 01" E, CHORD LENGTH = 358.30', CENTRAL ANGLE = 40° 50' 00" (RT)
- K RADIUS = 327.40', ARC LENGTH = 83.57', CHORD BEARING = S 29° 05' 45" E, CHORD LENGTH = 83.34', CENTRAL ANGLE = 14° 37' 27" (LT)

REV. BY	DATE	DESCRIPTION
CAC	12/16/13	ADDED 510-JV
CAC	1/8/13	ADDED REFERENCE TO SHEET 63 FOR 508-ML
CAC	10/11/13	ADDED CONST. CENTERLINE FOR LIMA AVE
CAC	4/16/13	CORRECTED STA. 74+64.51, 32.00' LT.