

| | PROP DITCH ELEV | EX GROUND ELEV |
|----------------------|-----------------|----------------|
| (A) | 781.00 | 783.49 |
| (B) | 781.10 | 783.08 |
| (C) | 781.20 | 783.74 |
| (D) | 782.30 | 784.00 |
| (E) | 783.00 | 783.75 |
| PROP STORM FE | | |
| (F) | 782.38 | 784.29 |

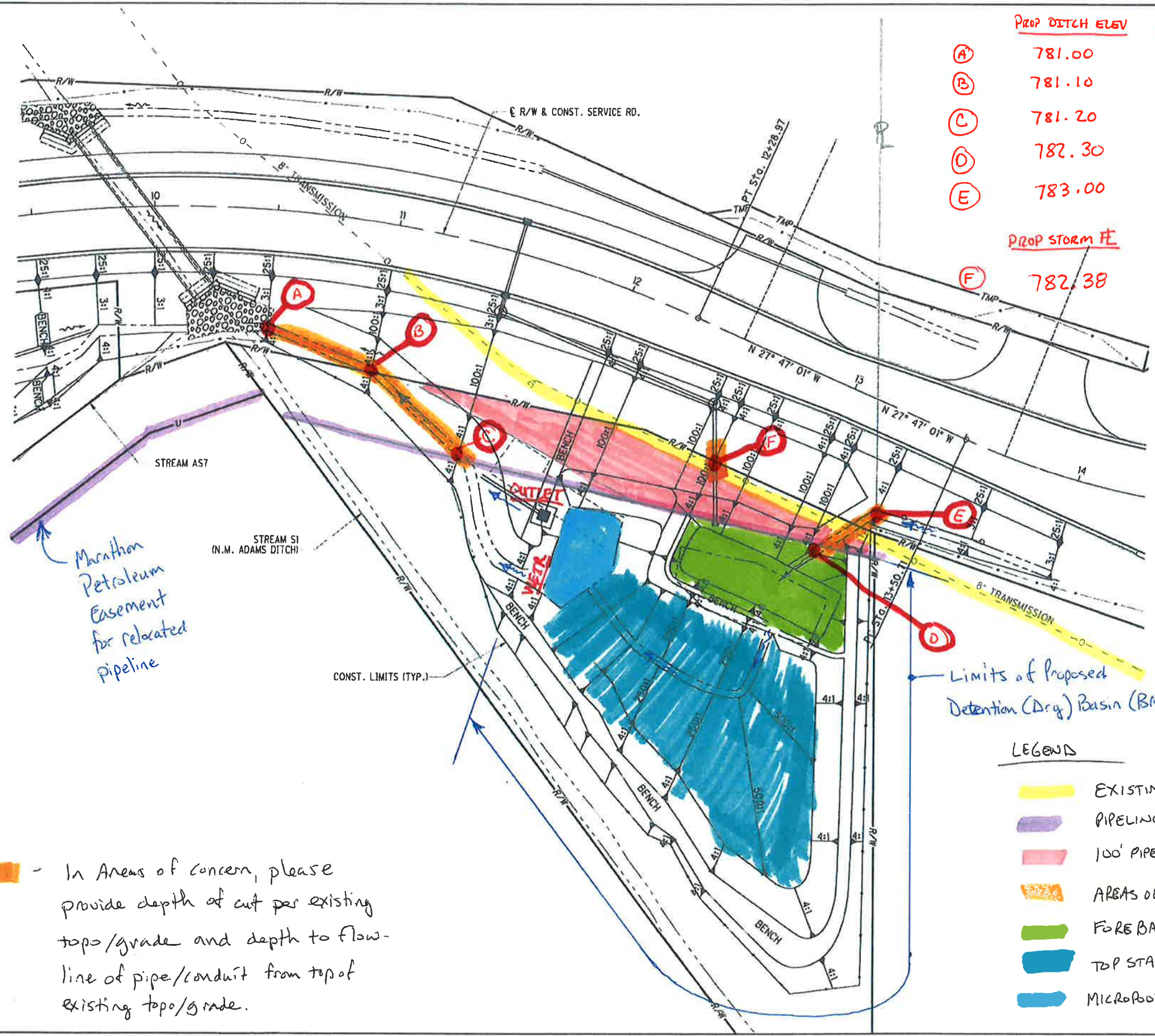


HORIZONTAL SCALE IN FEET

CALCULATED
CHECKED

GRADING DETAILS

HAN-75-14.39



Marathon Petroleum Easement for relocated pipeline

Limits of Proposed Detention (Dry) Basin (BMP)

- LEGEND
- EXISTING PIPELINE
 - PIPELINE EASEMENT
 - 100' PIPELINE TIE-IN
 - AREAS OF COVER CONCERN
 - FORE BAY (DETENTION BASIN)
 - TOP STAGE (DETENTION BASIN)
 - MICROPOOL (DETENTION BASIN)

In Areas of concern, please provide depth of cut per existing topo/grade and depth to flow-line of pipe/conduit from top of existing topo/grade.

24.FED.7014.3.F.dwg
 2008.05.20.10.30.00
 philipst