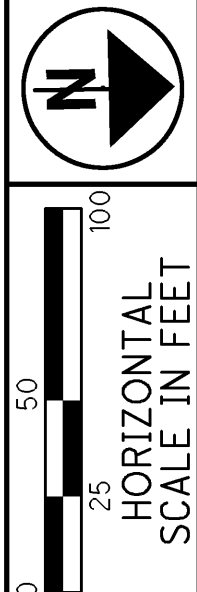


HANCOCK COUNTY  
LIBERTY TOWNSHIP  
SEC. 23, NE 1/4, SE 1/4, T. 1N., R. 10E.  
CITY OF FINDLAY



PID NO.  
**87005**

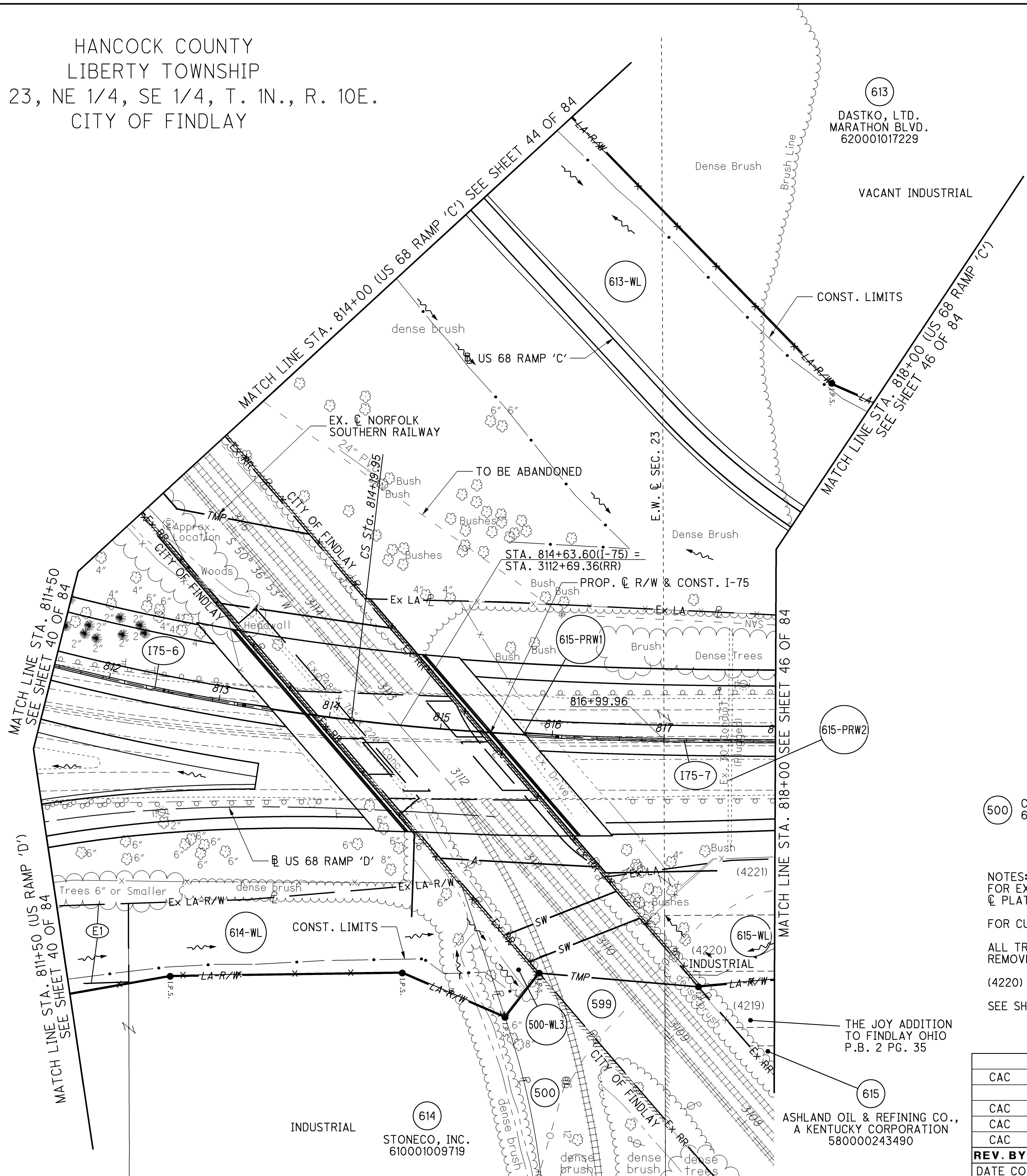
R/W DESIGNER  
CAC

R/W REVIEWER  
RCC

**RIGHT OF WAY TOPO SHEET**  
**STA. 811+50 TO STA. 818+00**

**HAN-75-14.39**  
**PHASE 1**

42 / 84



(EI) INGRESS/EGRESS EASEMENT  
VARIABLE WIDTH  
JIM HICKERSON EXCAVATING  
O.R. 1318, PG. 115

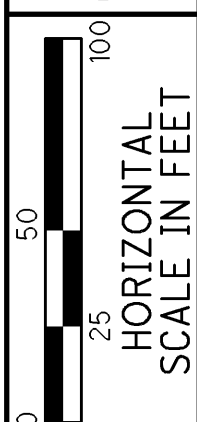
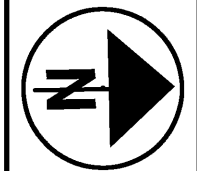
(500) CELTIC MATERIALS, L.L.C.  
610001022635

NOTES:  
FOR EX. C INFORMATION AND PROP. R INFORMATION SEE  
C PLAT SHEETS 3 THRU 11.  
FOR CURVE DATA INFORMATION SEE SHEET 12 AND 13.  
ALL TREES ALONG THE EXISTING LA FENCE WILL BE  
REMOVED UNLESS LABELED AS "SAVE".  
(4220) REPRESENTS THE LOT NUMBER OF THE SUBDIVISION.  
SEE SHEET 84 OF 84 FOR RAILROAD PLAT.

REV. BY	DATE	DESCRIPTION
CAC	8/23/13	REVISED PROPERTY LINES FOR 500 & 614; REVISED 614-WL AND ADDED 500-WL3
CAC	6/19/13	REV. 615-WL; REMOVED 615-WD
CAC	6/7/13	REVISED 614-WL
CAC	3/22/13	REVISED I-75 CENTERLINE, 613-WL, 614-WL, 615-WL & 615-WD
DATE COMPLETED 1/08/13		

T:\Projects\HAN\87005\row\sheets\87005RT007P1.dgn 27-AUG-2013 8:38AM cofield

HANCOCK COUNTY  
LIBERTY TOWNSHIP  
SEC. 23, NE 1/4, SE 1/4, T. 1N., R. 10E.  
CITY OF FINDLAY



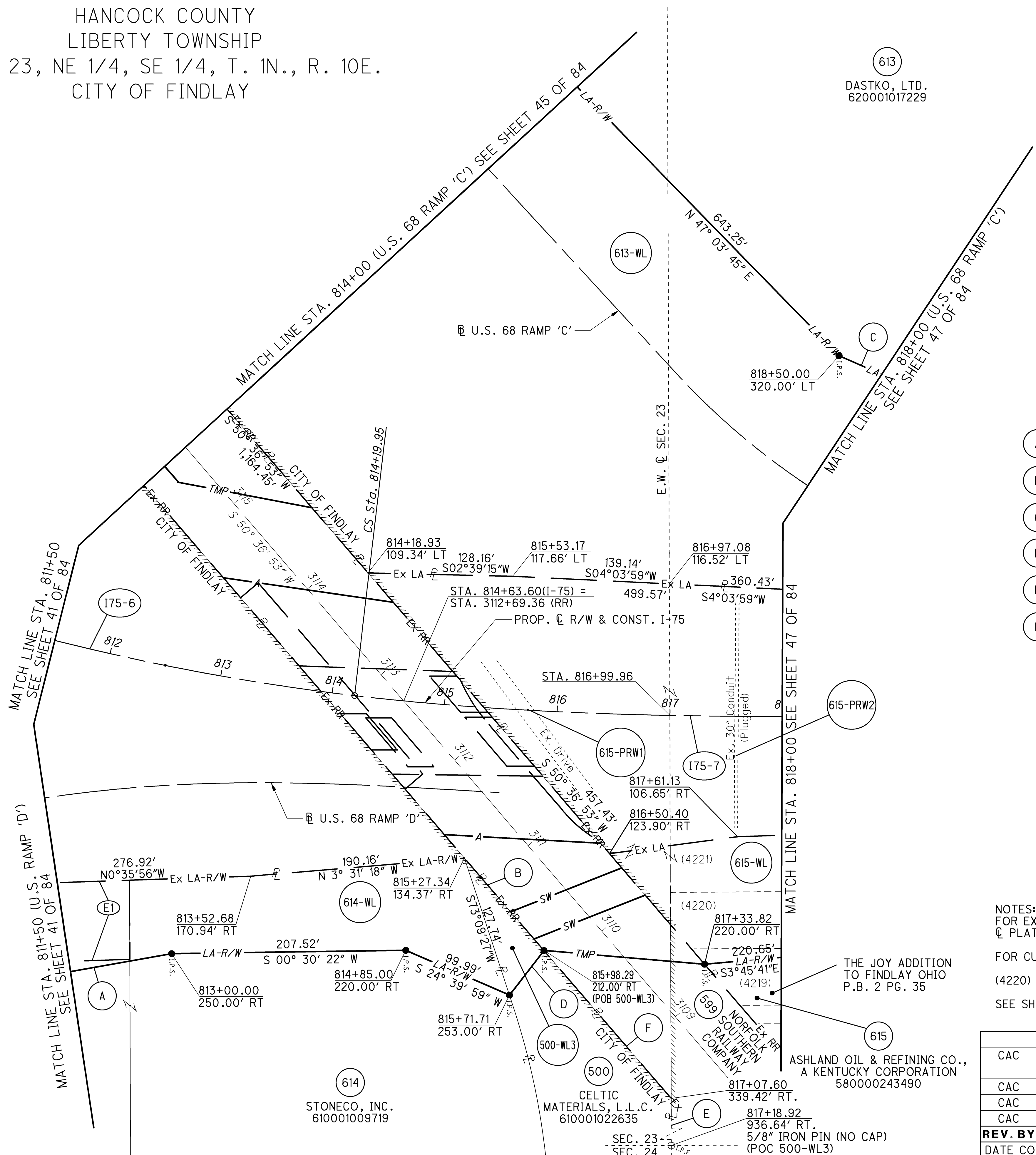
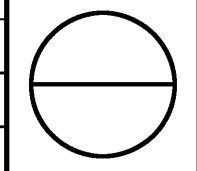
PID NO.  
**87005**

R/W DESIGNER  
CAC  
R/W REVIEWER  
RCC

**RIGHT OF WAY BOUNDARY SHEET**  
**STA. 811+50 TO STA. 818+00**

**HAN-75-14.39**  
**PHASE 1**

43 / 84



- (A) S 08° 44' 17" E, 209.64'
- (B) N 50° 36' 53" E, 108.03'
- (C) N 24° 59' 09" E, 272.46'
- (D) S 50° 52' 32" E, 49.97'
- (E) N 88° 53' 10" W, 597.35'
- (F) S 50° 36' 53" W, 172.92'

NOTES:  
FOR EX. © INFORMATION AND PROP. © INFORMATION SEE  
© PLAT SHEETS 3 THRU 11.  
FOR CURVE DATA INFORMATION SEE SHEET 12 AND 13.  
(4220) REPRESENTS THE LOT NUMBER OF THE SUBDIVISION.  
SEE SHEET 84 OF 84 FOR RAILROAD PLAT.

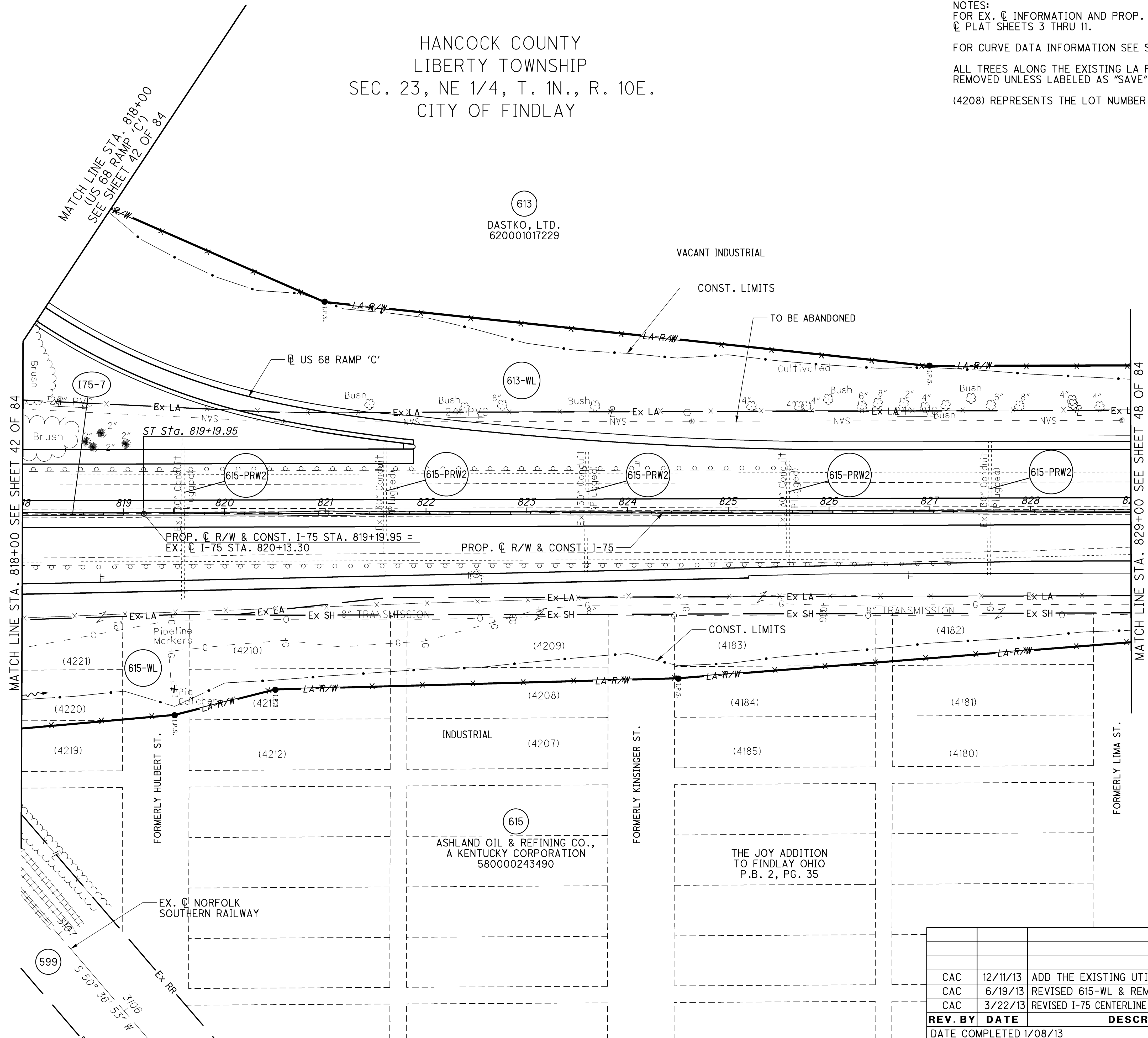
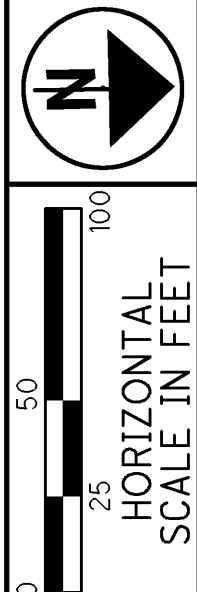
REV. BY	DATE	DESCRIPTION
CAC	8/23/13	REVISED PROPERTY LINES FOR 614 & 500; REVISED 614-WL AND ADDED 500-WL3
CAC	6/19/13	REV 615-WL; REMOVED 615-WD; CORRECTED 613-WL
CAC	6/7/13	REVISED 614-WL
CAC	3/22/13	REVISED I-75 CENTERLINE, 612-WL, 613-WL, 615-WL & 615-WD

DATE COMPLETED 1/08/13

T:\Projects\HAN\87005\row\sheets\87005RB007P1.dgn 27-AUG-2013 8:42AM coffield

HANCOCK COUNTY  
LIBERTY TOWNSHIP  
SEC. 23, NE 1/4, T. 1N., R. 10E.  
CITY OF FINDLAY

NOTES:  
FOR EX. C INFORMATION AND PROP. B INFORMATION SEE  
C PLAT SHEETS 3 THRU 11.  
FOR CURVE DATA INFORMATION SEE SHEET 12 AND 13.  
ALL TREES ALONG THE EXISTING LA FENCE WILL BE  
REMOVED UNLESS LABELED AS "SAVE".  
(4208) REPRESENTS THE LOT NUMBER OF THE SUBDIVISION.



T:\Projects\HAN\87005\row\sheets\87005RT009P1.dgn 11-DEC-2013 10:26AM coffield

PID NO. **87005**  
R/W DESIGNER CAC  
R/W REVIEWER RCC

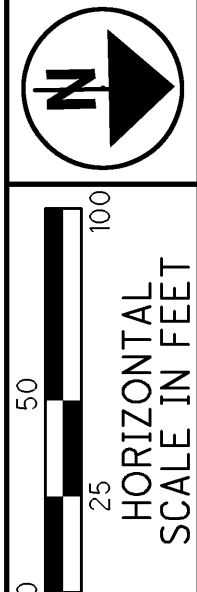
**RIGHT OF WAY TOPO SHEET**  
**STA. 818+00 TO STA. 829+00**

**HAN-75-14.39**  
**PHASE 1**

REV. BY	DATE	DESCRIPTION
CAC	12/11/13	ADD THE EXISTING UTILITIES
CAC	6/19/13	REVISED 615-WL & REMOVED 615-WD
CAC	3/22/13	REVISED I-75 CENTERLINE, 613-WL, 615-WL & 615-WD
DATE COMPLETED 1/08/13		

HANCOCK COUNTY  
LIBERTY TOWNSHIP  
SEC. 23, NE 1/4, T. 1N., R. 10E.  
CITY OF FINDLAY

NOTES:  
FOR EX.  $\text{\textcircled{C}}$  INFORMATION AND PROP.  $\text{\textcircled{B}}$  INFORMATION SEE  
 $\text{\textcircled{C}}$  PLAT SHEETS 3 THRU 11.  
FOR CURVE DATA INFORMATION SEE SHEET 12 AND 13.  
(4208) REPRESENTS THE LOT NUMBER OF THE SUBDIVISION.



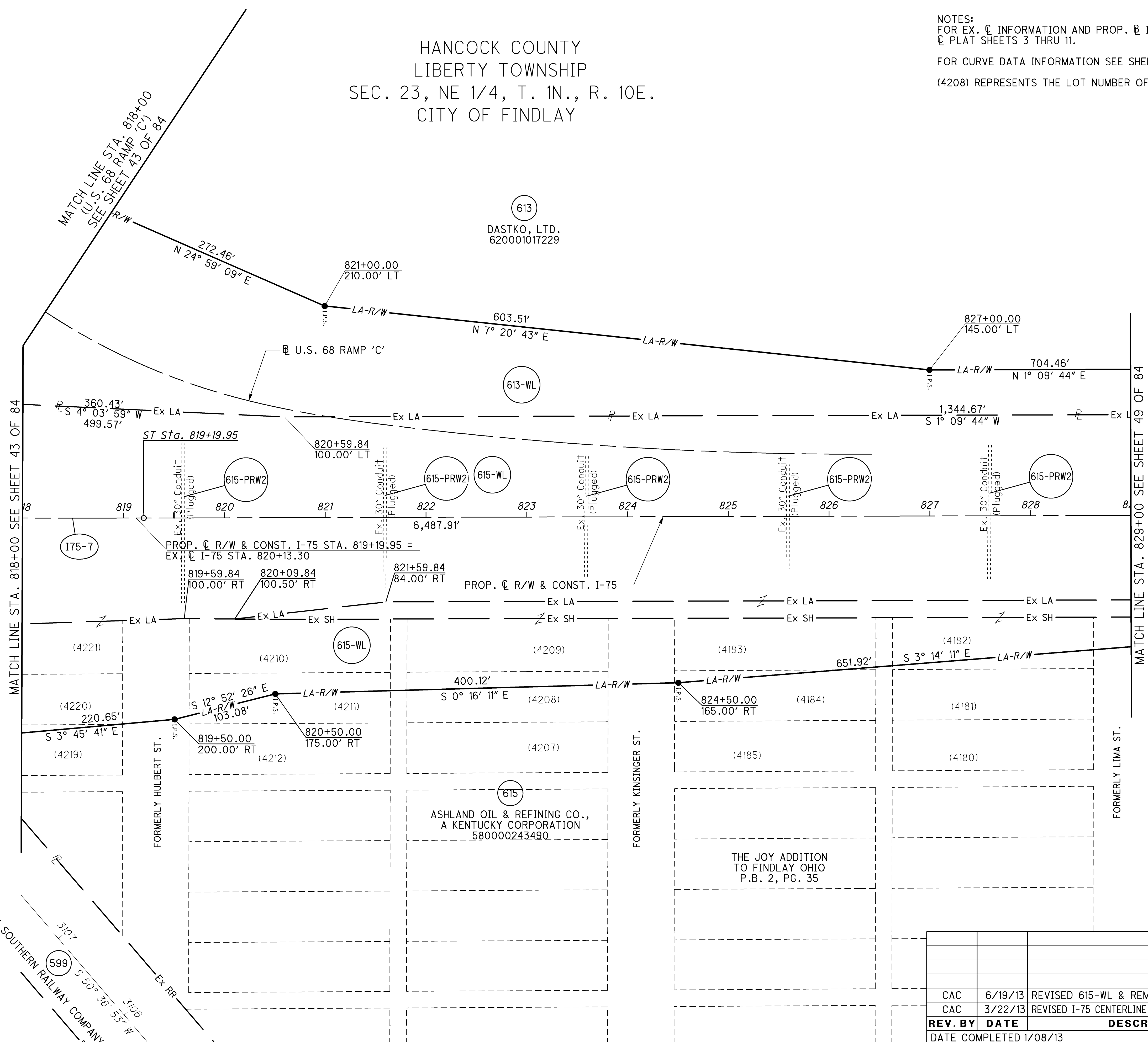
PID NO. **87005**  
R/W DESIGNER CAC  
R/W REVIEWER RCC

**RIGHT OF WAY BOUNDARY SHEET**  
**STA. 818+00 TO STA. 829+00**

**HAN-75-14.39**  
**PHASE 1**

47 / 84

REV. BY	DATE	DESCRIPTION
CAC	6/19/13	REVISED 615-WL & REMOVED 615-WD
CAC	3/22/13	REVISED I-75 CENTERLINE, 613-WL, 615-WL & 615-WD
DATE COMPLETED		1/08/13



T:\Projects\HAN\87005\row\sheets\87005RB009P1.dgn 20-JUN-2013 11:31AM coffield

NOTES:  
 FOR EX.  $\text{\textcircled{C}}$  INFORMATION AND PROP.  $\text{\textcircled{B}}$  INFORMATION SEE  
 $\text{\textcircled{C}}$  PLAT SHEETS 3 THRU 11.

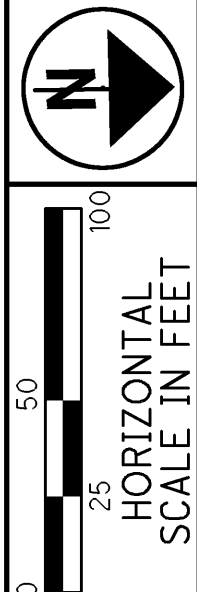
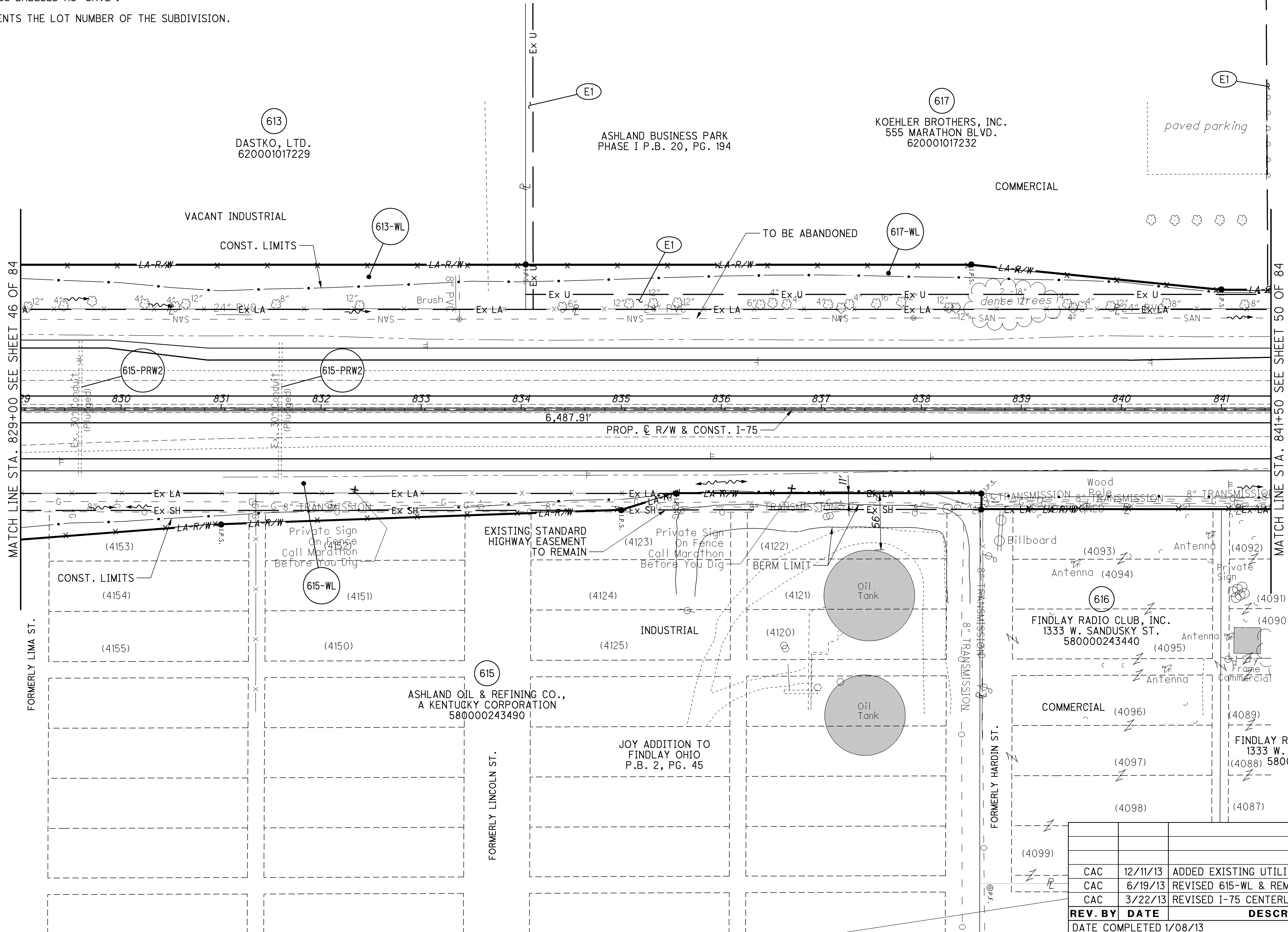
FOR CURVE DATA INFORMATION SEE SHEET 12 AND 13.

ALL TREES ALONG THE EXISTING LA FENCE WILL BE  
 REMOVED UNLESS LABELED AS "SAVE".

(4096) REPRESENTS THE LOT NUMBER OF THE SUBDIVISION.

HANCOCK COUNTY  
 LIBERTY TOWNSHIP  
 SEC. 23, NE 1/4, T. 1N., R. 10E.  
 CITY OF FINDLAY

7.5' UTILITY, 15' UTILITY  
 AND DRAINAGE EASEMENT  
 ASHLAND BUSINESS PARK PHASE 1  
 D.B. 1874, PG. 210



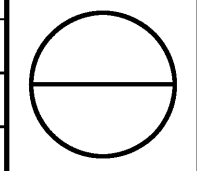
PID NO. **87005**  
 R/W DESIGNER CAC  
 R/W REVIEWER RCC

**RIGHT OF WAY TOPO SHEET**  
**STA. 829+00 TO STA. 841+50**

**HAN-75-14.39**  
**PHASE 1**

REV. BY	DATE	DESCRIPTION
CAC	12/11/13	ADDED EXISTING UTILITIES
CAC	6/19/13	REVISED 615-WL & REMOVED 615-WD
CAC	3/22/13	REVISED I-75 CENTERLINE, 613-WL & 617-WL
DATE COMPLETED 1/08/13		

48 / 84



T:\Projects\HAN\87005\row\sheets\87005RT010P1.dgn 11-DEC-2013 10:26AM cofield

NOTES:  
 FOR EX.  $\text{C}$  INFORMATION AND PROP.  $\text{R}$  INFORMATION SEE  
 $\text{C}$  PLAT SHEETS 3 THRU 11.

FOR CURVE DATA INFORMATION SEE SHEET 12 AND 13.  
 (4096) REPRESENTS THE LOT NUMBER OF THE SUBDIVISION.

HANCOCK COUNTY  
 LIBERTY TOWNSHIP  
 SEC. 23, NE 1/4, T. 1N., R. 10E.  
 CITY OF FINDLAY

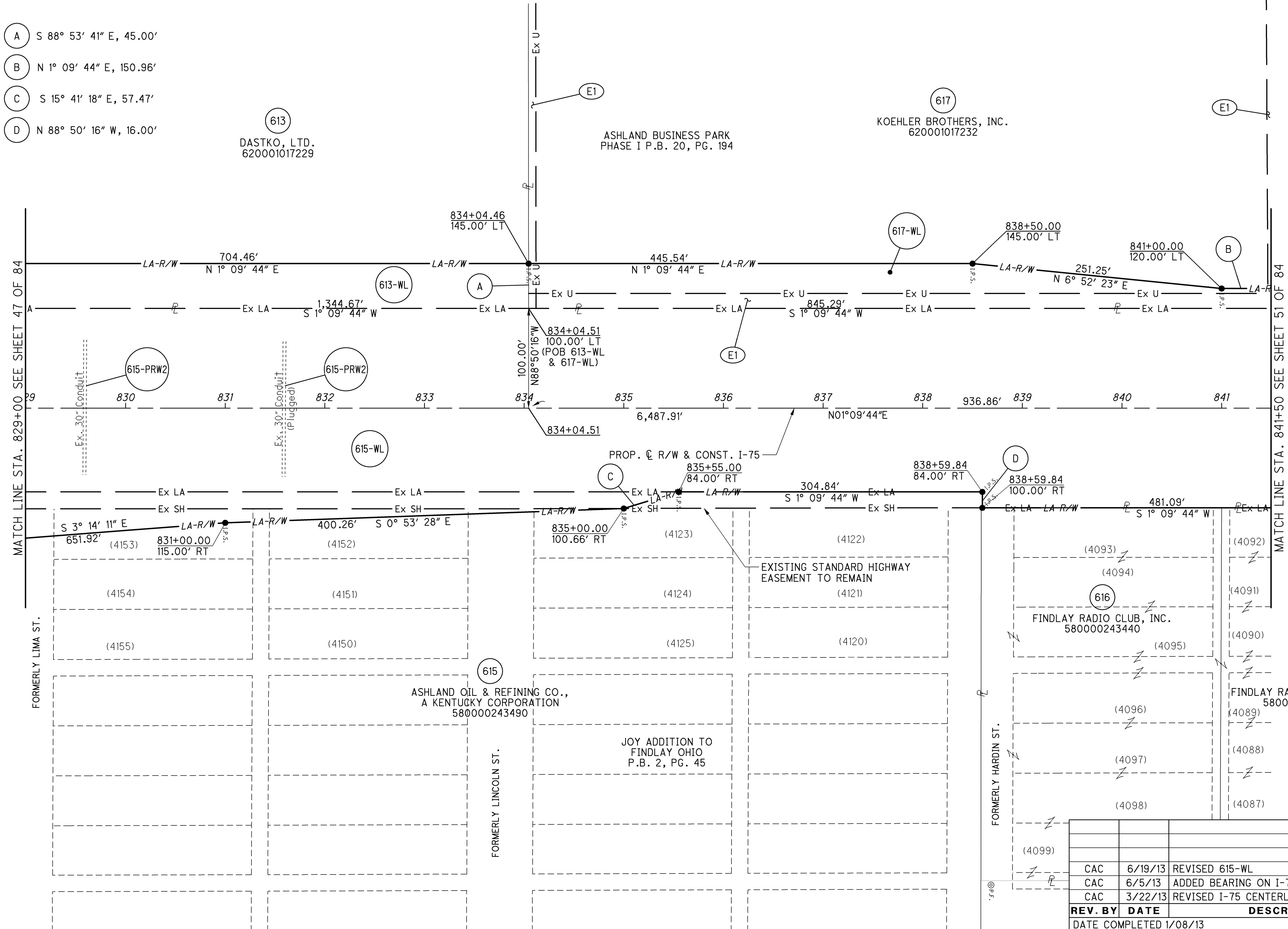
7.5' UTILITY, 15' UTILITY  
 AND DRAINAGE EASEMENT  
 ASHLAND BUSINESS PARK PHASE 1  
 D.B. 1874, PG. 210

- (A) S 88° 53' 41" E, 45.00'
- (B) N 1° 09' 44" E, 150.96'
- (C) S 15° 41' 18" E, 57.47'
- (D) N 88° 50' 16" W, 16.00'

(613)  
 DASTKO, LTD.  
 620001017229

ASHLAND BUSINESS PARK  
 PHASE I P.B. 20, PG. 194

(617)  
 KOEHLER BROTHERS, INC.  
 620001017232



MATCH LINE STA. 829+00 SEE SHEET 47 OF 84

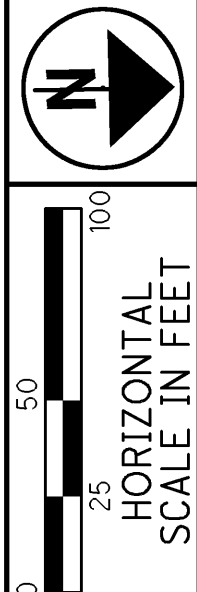
MATCH LINE STA. 841+50 SEE SHEET 51 OF 84

FORMERLY LIMA ST.

FORMERLY LINCOLN ST.

FORMERLY HARDIN ST.

REV. BY	DATE	DESCRIPTION
CAC	6/19/13	REVISED 615-WL
CAC	6/5/13	ADDED BEARING ON I-75 CENTERLINE
CAC	3/22/13	REVISED I-75 CENTERLINE, 613-WL & 617-WL
DATE COMPLETED 1/08/13		



PID NO.  
**87005**

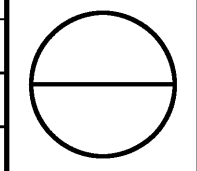
R/W DESIGNER  
 CAC

R/W REVIEWER  
 RCC

**RIGHT OF WAY BOUNDARY SHEET**  
**STA. 829+00 TO STA. 841+50**

**HAN-75-14.39**  
**PHASE 1**

49 / 84



T:\Projects\HAN\87005\row\sheets\87005RB010P1.dgn 20-JUN-2013 11:31AM colfield

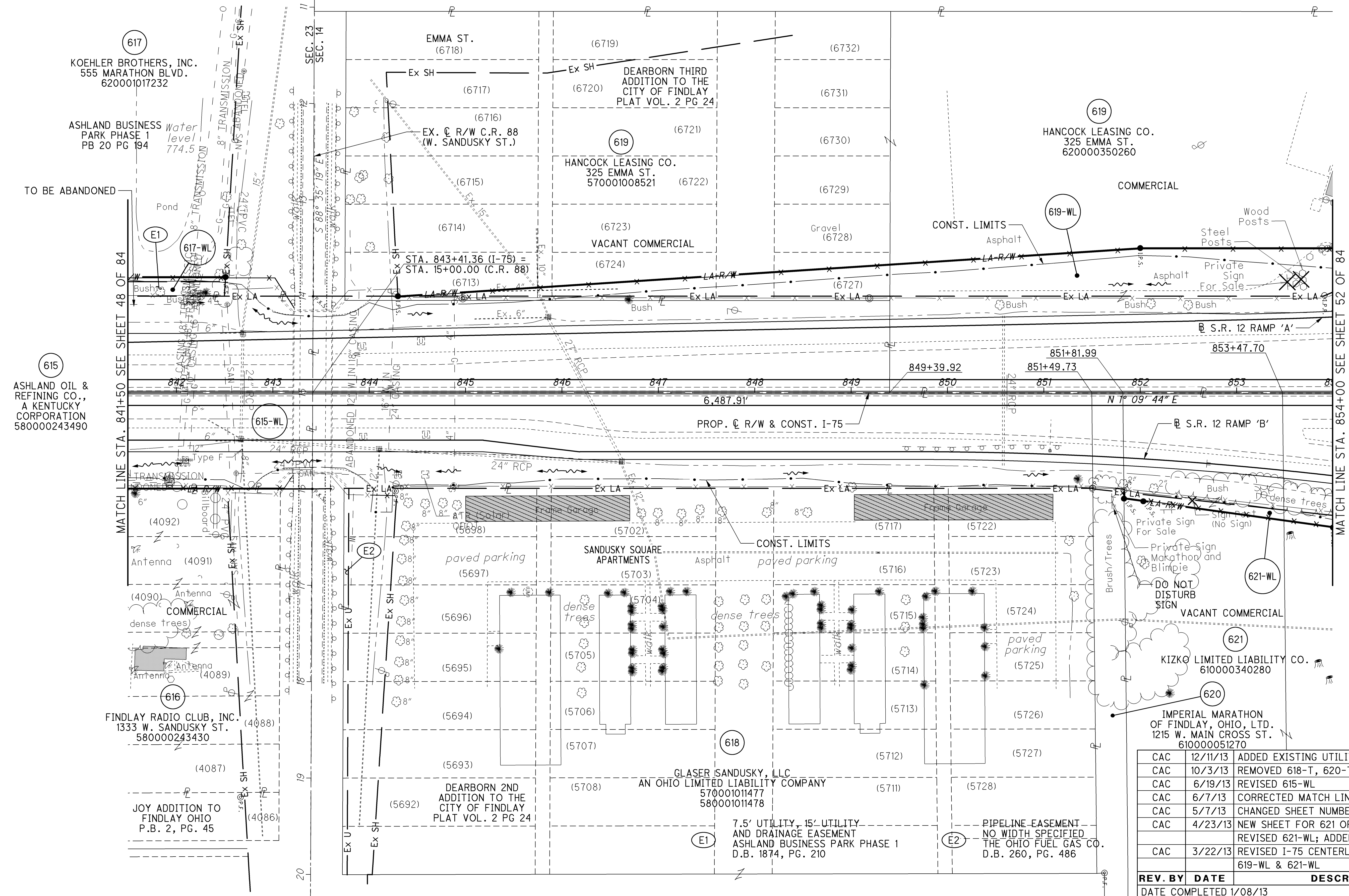
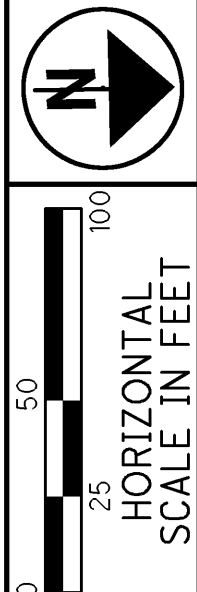
NOTES:  
 FOR EX. C INFORMATION AND PROP. B INFORMATION SEE  
 C PLAT SHEETS 3 THRU 11.

FOR CURVE DATA INFORMATION SEE SHEET 12 AND 13.

ALL TREES ALONG THE EXISTING LA FENCE WILL BE  
 REMOVED UNLESS LABELED AS "SAVE".

(5724) REPRESENTS THE LOT NUMBER OF THE SUBDIVISION.

HANCOCK COUNTY  
 LIBERTY TOWNSHIP  
 SEC. 14, SE 1/4 & SEC. 23, NE 1/4, T. 1N., R. 10E.  
 CITY OF FINDLAY



617  
 KOEHLER BROTHERS, INC.  
 555 MARATHON BLVD.  
 620001017232

ASHLAND BUSINESS  
 PARK PHASE 1  
 PB 20 PG 194

615  
 ASHLAND OIL &  
 REFINING CO.,  
 A KENTUCKY  
 CORPORATION  
 580000243490

616  
 FINDLAY RADIO CLUB, INC.  
 1333 W. SANDUSKY ST.  
 580000243430

JOY ADDITION TO  
 FINDLAY OHIO  
 P.B. 2, PG. 45

EMMA ST. (6718)  
 DEARBORN THIRD  
 ADDITION TO THE  
 CITY OF FINDLAY  
 PLAT VOL. 2 PG 24

HANCOCK LEASING CO.  
 325 EMMA ST.  
 570001008521

VACANT COMMERCIAL  
 (6724)

SANDUSKY SQUARE  
 APARTMENTS  
 (5703)

GLASER SANDUSKY, LLC  
 AN OHIO LIMITED LIABILITY COMPANY  
 570001011477  
 580001011478

HANCOCK LEASING CO.  
 325 EMMA ST.  
 620000350260

COMMERCIAL  
 (6728) Gravel

VACANT COMMERCIAL  
 (5725) paved parking

KIZKO LIMITED LIABILITY CO.  
 610000340280

IMPERIAL MARATHON  
 OF FINDLAY, OHIO, LTD.  
 1215 W. MAIN CROSS ST.  
 610000051270

7.5' UTILITY, 15' UTILITY  
 AND DRAINAGE EASEMENT  
 ASHLAND BUSINESS PARK PHASE 1  
 D.B. 1874, PG. 210

PIPELINE EASEMENT  
 NO WIDTH SPECIFIED  
 THE OHIO FUEL GAS CO.  
 D.B. 260, PG. 486

REV. BY	DATE	DESCRIPTION
CAC	12/11/13	ADDED EXISTING UTILITIES
CAC	10/3/13	REMOVED 618-T, 620-T & 621-WD
CAC	6/19/13	REVISED 615-WL
CAC	6/7/13	CORRECTED MATCH LINE SHEET REFERENCE
CAC	5/7/13	CHANGED SHEET NUMBER FROM 50B TO 50
CAC	4/23/13	NEW SHEET FOR 621 OPTION B; REVISED 621-WL; ADDED 621-WD
CAC	3/22/13	REVISED I-75 CENTERLINE, 617-WL, 618-T, 619-WL & 621-WL
DATE COMPLETED		1/08/13

PID NO.  
**87005**

R/W DESIGNER  
 CAC  
 R/W REVIEWER  
 RCC

RIGHT OF WAY TOPO SHEET  
 STA. 841+50 TO STA. 854+00

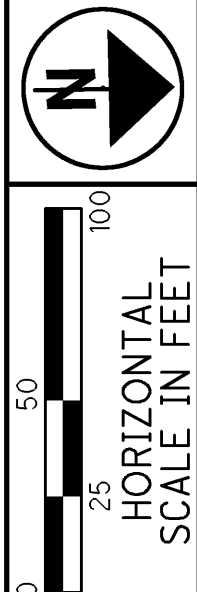
HAN-75-14.39  
 PHASE 1

50/84

T:\Projects\HAN\87005\row\sheets\87005RT01P1.dgn 11-DEC-2013 10:26AM coffield

- (A) S 85° 30' 00" E, 20.03'
- (C) N 88° 35' 19" W, 4.40'
- (D) N 1° 09' 44" E, 55.00'
- (G) S 89° 26' 43" E, 6.44'
- (K) N 9° 02' 21" E, 20.22'

HANCOCK COUNTY  
LIBERTY TOWNSHIP  
SEC. 14, SE 1/4 & SEC. 23, NE 1/4, T. 1N., R. 10E.  
CITY OF FINDLAY



NOTES:  
FOR EX. C INFORMATION AND PROP. B INFORMATION SEE  
E PLAT SHEETS 3 THRU 11.  
FOR CURVE DATA INFORMATION SEE SHEET 12 AND 13.  
(5724) REPRESENTS THE LOT NUMBER OF THE SUBDIVISION.

PID NO. **87005**  
R/W DESIGNER CAC  
R/W REVIEWER RCC

**RIGHT OF WAY BOUNDARY SHEET**  
**STA. 841+50 TO STA. 854+00**

**HAN-75-14.39**  
**PHASE 1**

51 / 84

(617) KOEHLER BROTHERS, INC.  
620001017232

ASHLAND BUSINESS  
PARK PHASE 1  
PB 20 PG 194

(615) ASHLAND OIL &  
REFINING CO.,  
A KENTUCKY  
CORPORATION  
580000243490

JOY ADDITION TO  
FINDLAY OHIO  
P.B. 2, PG. 45

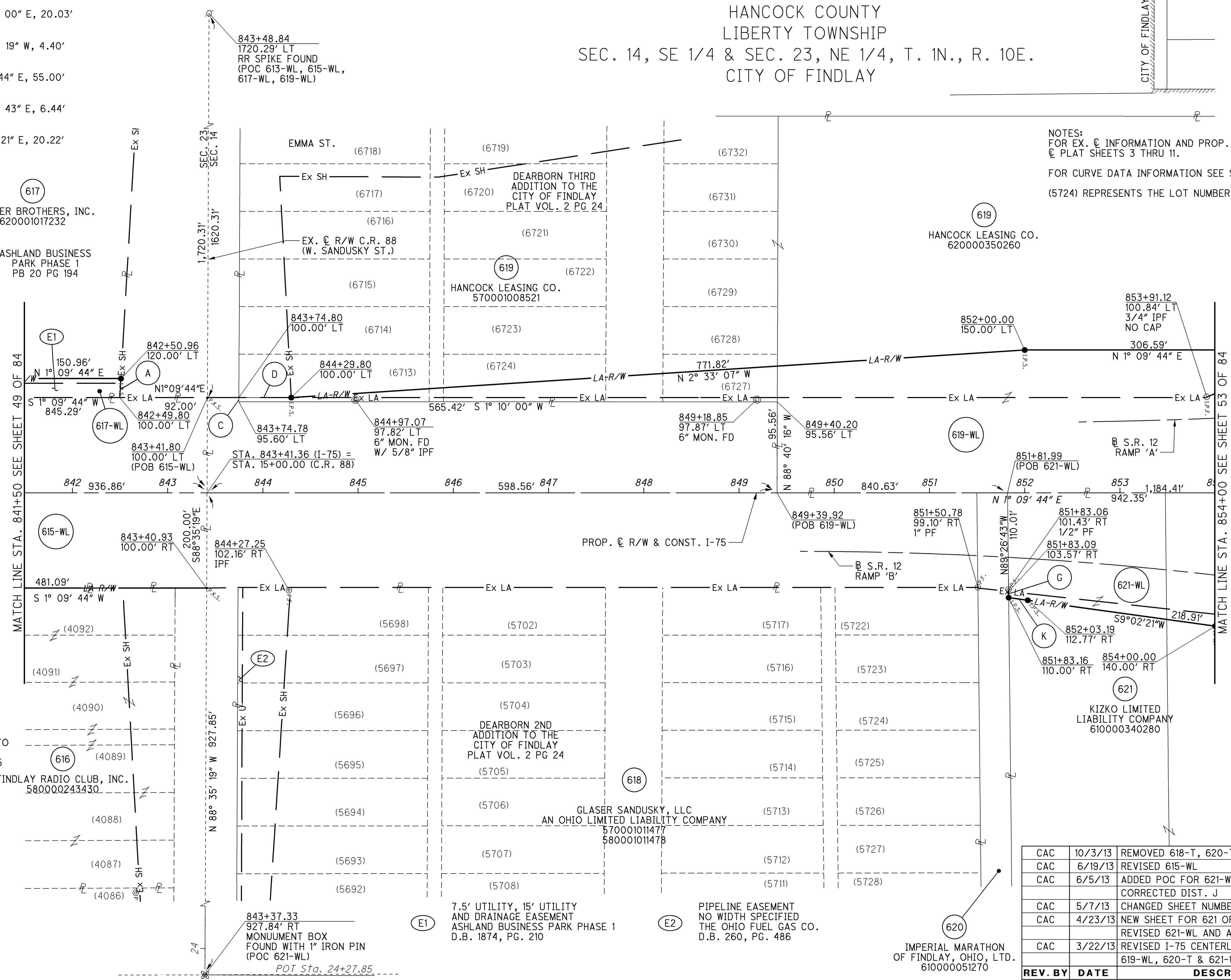
FINDLAY RADIO CLUB, INC.  
580000243430

DEARBORN 2ND  
ADDITION TO THE  
CITY OF FINDLAY  
PLAT VOL. 2 PG 24

GLASER SANDUSKY, LLC  
AN OHIO LIMITED LIABILITY COMPANY  
570001011477  
580001011478

IMPERIAL MARATHON  
OF FINDLAY, OHIO, LTD.  
610000051270

REV. BY	DATE	DESCRIPTION
CAC	10/3/13	REMOVED 618-T, 620-T & 621-WD
CAC	6/19/13	REVISED 615-WL
CAC	6/5/13	ADDED POC FOR 621-WD & POB FOR 619-WL; CORRECTED DIST. J
CAC	5/7/13	CHANGED SHEET NUMBER FROM 51B TO 51
CAC	4/23/13	NEW SHEET FOR 621 OPTION B; REVISED 621-WL AND ADDED 621-WD
CAC	3/22/13	REVISED I-75 CENTERLINE, 617-WL, 618-T, 619-WL, 620-T & 621-WL
<b>REV. BY DATE</b>		<b>DESCRIPTION</b>
DATE COMPLETED 1/08/13		



T:\Projects\HAN\87005\row\sheets\87005RB01P1.dgn 09-OCT-2013 8:42AM colfield