



The Subsurface Utility Engineering Company

449 Munroe Falls Road
Tallmadge, OH 44278
(330) 794-4455

Test Hole Certification Form Utility Quality Level A Data

ASCE C/1 38-02

Corporate Headquarters
8397 Euclid Avenue
Manassas Park, VA 20111
(703) 361-6005

Control # **EZQE017**
Test Hole # **62**
Plan Scale **1" = 50'**
Sheet # **19**
Proposed **GRADE CHANGE**
Date **AUGUST 1, 2013**

City, County, State **HANCOCK CO., OHIO**
Gen. Loc. **I-75 S., JUST N. OF W. BIGELOW AVE. OVERPASS**
Recorded Size/Material/Type **8" STEEL GAS LINE**
Foreman/Truck#/Form By **T. / BARRETT / 221 / S. ERICKSON**

Condition of paving prior to work
NO PAVING

B.M. 1 Elev. = **834.68'**
is **CALCULATED**

Description: **(TBM#23) 1/2" I.R. SET, 66± LT OF PROPOSED CL
STA 994+28±, I-75**

B.M. 2 Elev. = **831.75'**
is **CALCULATED**

Description: **(TBM#22) 1/2" I.R. SET, 74± LT OF PROPOSED CL
STA 991+38±, I-75**

Benchmarks Check **BY 0.01'**
Elevations are referenced to **B.M.#1**

So-Deep will attempt to use the BM/
HI most applicable to your
design. If however, BMs differ by more
than .05', resulting differences could
cause design conflicts.

Recorded Size/Type of utility **WAS FOUND**

There **WERE NOT** additional utilities in the test hole

The utility **WAS** in good condition

Paving Thickness and type **NO PAVING**

Color of ribbon installed **YELLOW**

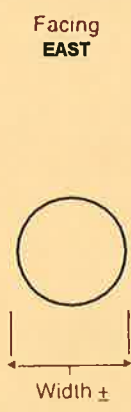
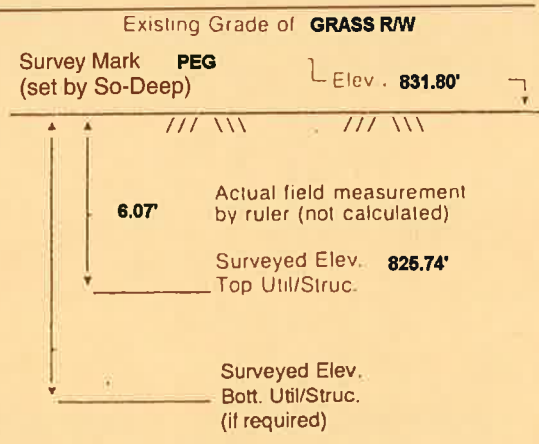
Soil Type **WET STICKY CLAY**

Truck Location **GRASS R/W**

T.H. tied to **PEG**

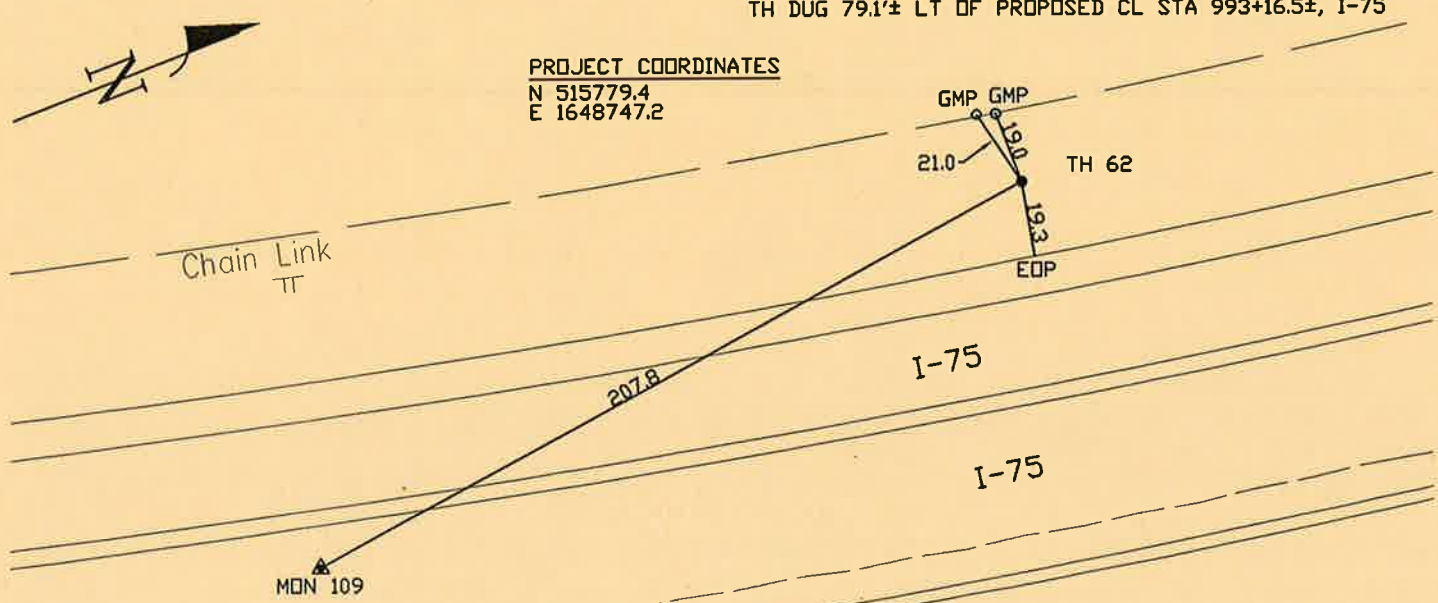
8 3/4" COATED STEEL GAS LINE *
Size/Material/Type
Portion of pipe exposed
for O.D. measurement:
FULL

Remarks: * **SIZE AND MATERIAL WAS CONFIRMED BY NICHOLAS J.
DRUMMELSMITH SUNOCO INSPECTOR ON SITE. CELL (419) 455-3800.**



TH DUG 79.1± LT OF PROPOSED CL STA 993+16.5±, I-75

PROJECT COORDINATES
N 515779.4
E 1648747.2



- FO = Fiber-Optic Cable
- MTD = Multi Tile Duct
- R/W = Rights of Way
- N.T.S. = Not to Scale
- * = Not Shown on Plan
- PCC = Precast Concrete
- COND. = Conduit
- CONC. = Concrete
- O.D. = Outside Diameter
- C.I. = Cast Iron
- D.I. = Ductile Iron
- RPC = Rough Pour Concrete
- CL = Centerline
- T.C. = Tera Cotta
- PLAS. = Plastic
- BL = Base Line
- ELEC. = Electric
- TELE = Telephone
- T.H. = Test Hole
- SW = Sidewalk
- DW = Driveway
- BM = Benchmark
- C.B. = Catch Basin
- GV = Gas Valve

Paul R. Cole

Performing out-of-sight work...with vision!TM
Note: To Eliminate mistakes and check this work, So-Deep suggests you scale and plot all dimensions onto the plans and review all elevations carefully. So-Deep is responsible only for information shown on our forms.

- .08" = 1"
- .16" = 2"
- .25" = 3"
- .33" = 4"
- .42" = 5"
- .50" = 6"
- .58" = 7"
- .67" = 8"
- .75" = 9"
- .83" = 10"
- .92" = 11"

- Sewer Manhole
- Test Hole
- ⊙ Fire Hydrant
- Pole
- Fence Line
- ⊕ Electric Manhole
- △ T.S. = Traverse Station
- ⊗ Valve
- ⊕ Water Meter
- ⊙ Telephone Manhole
- ⊞ Telephone Pedestal