



The Subsurface Utility Engineering Company
 449 Munroe Falls Road
 Tallmadge, OH 44278
 (330) 794-4455

Test Hole Certification Form

Utility Quality Level A Data

ASCE C/I 38-02

Corporate Headquarters
 8397 Euclid Avenue
 Manassas Park, VA 20111
 (703) 361-6005

Control # **EZQE017**
 Test Hole # **151A**
 Plan Scale **1" = 50'**
 Sheet # **19**
 Proposed **GRADE CHANGE**
 Date **SEPTEMBER 9, 2013**

City, County, State **HANCOCK CO., OHIO**
 Gen. Loc. **I-75 S. JUST N. OF W. BIGELOW AVE. OVERPASS**
 Recorded Size/Material/Type **10" STEEL PETROLEUM LINE**
 Foreman/Truck#/Form By **S. ERICKSON / 221 / P. REYNOLDS**

Condition of paving prior to work
NO PAVING

B.M. 1 Elev. = **834.68'**
 is **CALCULATED**
 Description: **(TBM#23) 1/2" I.R. SET, 66'± LT OF PROPOSED CL STA 994+28±, I-75**

B.M. 2 Elev. = **831.75'**
 is **CALCULATED**
 Description: **(TBM#22) 1/2" I.R. SET, 74'± LT OF PROPOSED CL STA 991+38±, I-75**

Benchmarks Check **BY 0.01'**
 Elevations are referenced to **B.M.#1**

So-Deep will attempt to use the BM/ HI most applicable to your design. If however, BMs differ by more than .05', resulting differences could cause design conflicts.

Recorded Size/Type of utility **WAS FOUND**

Existing Grade of **GRASS R/W**

There **WERE NOT** additional utilities in the test hole

The utility **WAS** in good condition

Paving Thickness and type **NO PAVING**

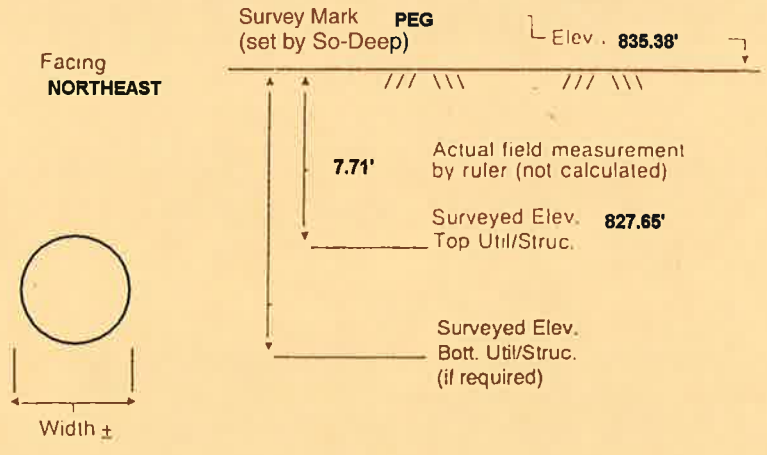
Color of ribbon installed **YELLOW**

Soil Type **WET STICKY CLAY**

Truck Location **GRASS R/W**

T.H. tied to **PEG**

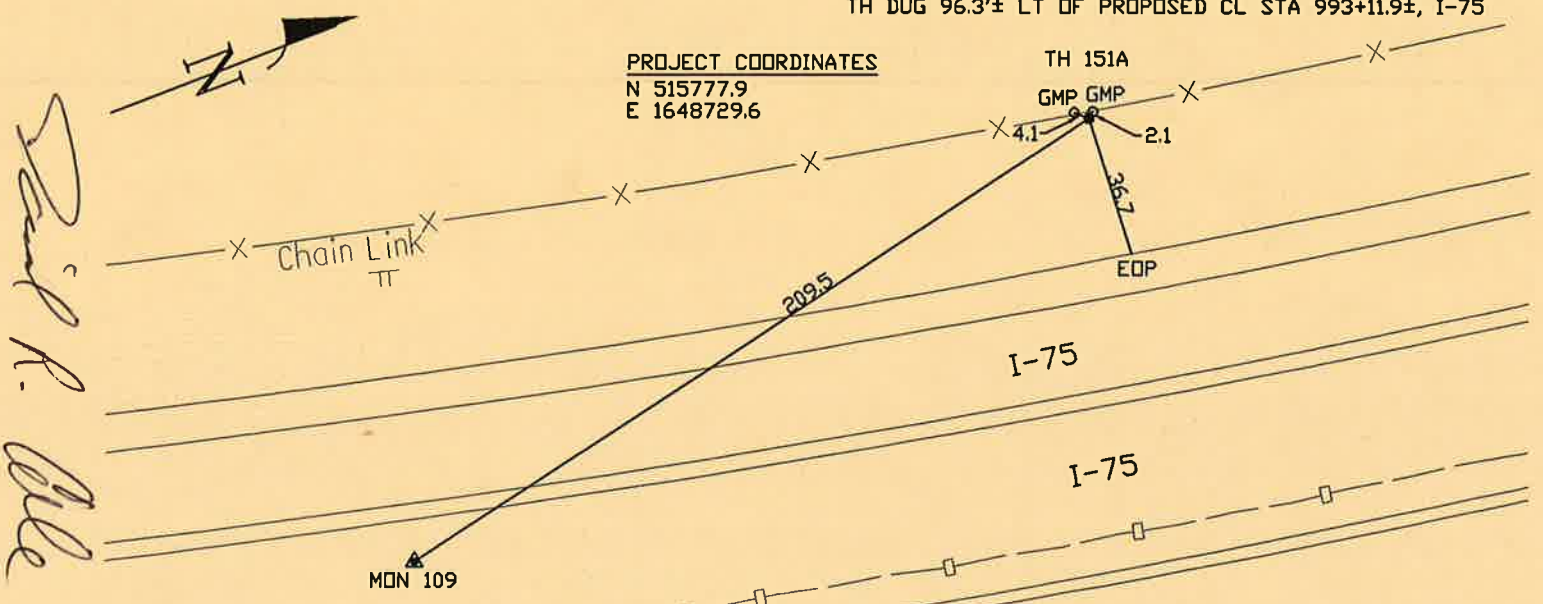
10 3/4" COATED STEEL PETROLEUM LINE *
 Size/Material/Type
 Portion of pipe exposed for O.D. measurement:
FULL



Remarks: * **CREW FOUND THE 10 3/4" PETROLEUM LINE MAKING A NOTICEABLE VERTICAL GRADE CHANGE DOWNWARD TOWARD THE NORTHEAST AT THIS LOCATION.**

TH DUG 96.3'± LT OF PROPOSED CL STA 993+11.9±, I-75

PROJECT COORDINATES
 N 515777.9
 E 1648729.6



Handwritten signature: David R. Cole

- | | |
|---------------------------|--------------------|
| FO = Fiber-Optic Cable | CL = Centerline |
| MTD = Multi Tile Duct | T.C. = Tera Cotta |
| R/W = Rights of Way | PLAS. = Plastic |
| N.T.S. = Not to Scale | BL = Base Line |
| * = Not Shown on Plan | ELEC. = Electric |
| PCC = Precast Concrete | TELE = Telephone |
| COND. = Conduit | T.H. = Test Hole |
| CONC. = Concrete | SW = Sidewalk |
| O.D. = Outside Diameter | DW = Driveway |
| C.I. = Cast Iron | BM = Benchmark |
| D.I. = Ductile Iron | C.B. = Catch Basin |
| RPC = Rough Pour Concrete | GV = Gas Valve |

- | | |
|------------|---------------------------|
| .08' = 1" | ○ Sewer Manhole |
| .16' = 2" | ● Test Hole |
| .25' = 3" | ○ Fire Hydrant |
| .33' = 4" | □ Pole |
| .42' = 5" | — Fence Line |
| .50' = 6" | ⊕ Electric Manhole |
| .58' = 7" | △ T.S. = Traverse Station |
| .67' = 8" | ⊗ Valve |
| .75' = 9" | ⊙ Water Meter |
| .83' = 10" | ⊕ Telephone Manhole |
| .92' = 11" | □ Telephone Pedestal |

Performing out-of-sight work...with vision!
 Note: To Eliminate mistakes and check this work, So-Deep suggests you scale and plot all dimensions onto the plans and review all elevations carefully. So-Deep is responsible only for information shown on our forms.



The Subsurface Utility Engineering Company

449 Munroe Falls Road
Tallmadge, OH 44278
(330) 794-4455

Test Hole Certification Form Utility Quality Level A Data

ASCE C/I 38-02

Corporate Headquarters
8397 Euclid Avenue
Manassas Park, VA 20111
(703) 361-6005

Control # **EZQE017**
Test Hole # **151B**
Plan Scale **1" = 50'**
Sheet # **19**
Proposed **GRADE CHANGE**
Date **SEPTEMBER 9, 2013**

Condition of paving prior to work
NO PAVING

City, County, State **HANCOCK CO., OHIO**
Gen. Loc. **I-75 S. JUST N. OF W. BIGELOW AVE. OVERPASS**
Recorded Size/Material/Type **8" STEEL PETROLEUM LINE**
Foreman/Truck#/Form By **S. ERICKSON / 221 / P. REYNOLDS**

B.M. 1 Elev. = **834.68'**
is **CALCULATED**

Description: **(TBM#23) 1/2" I.R. SET, 66'± LT OF PROPOSED CL
STA 994+28±, I-75**

B.M. 2 Elev. = **831.75'**
is **CALCULATED**

Description: **(TBM#22) 1/2" I.R. SET, 74'± LT OF PROPOSED CL
STA 991+38±, I-75**

Benchmarks Check **BY 0.01'**
Elevations are referenced to **B.M.#1**

Recorded Size/Type of utility **WAS FOUND**

There **WERE NOT** additional utilities in the test hole

The utility **WAS** in good condition

Paving Thickness and type **NO PAVING**

Color of ribbon installed **YELLOW**

Soil Type **WET STICKY CLAY**

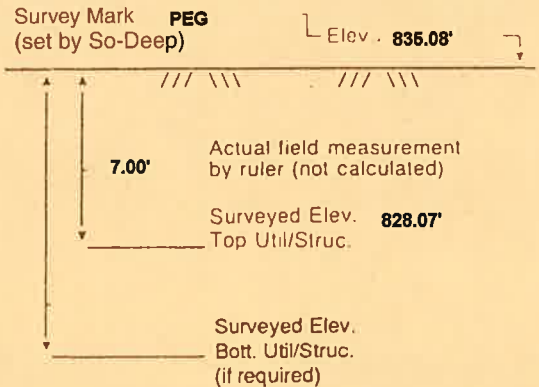
Truck Location **GRASS R/W**

T.H. tied to **PEG**

8 3/4" COATED STEEL PETROLEUM LINE *
Size/Material/Type
Portion of pipe exposed
for O.D. measurement:
FULL

Remarks: *** CREW FOUND THE 8 3/4" PETROLEUM LINE MAKING A
NOTICEABLE VERTICAL GRADE CHANGE DOWNWARD TOWARD THE
NORTHEAST AT THIS LOCATION.**

Existing Grade of **GRASS R/W**



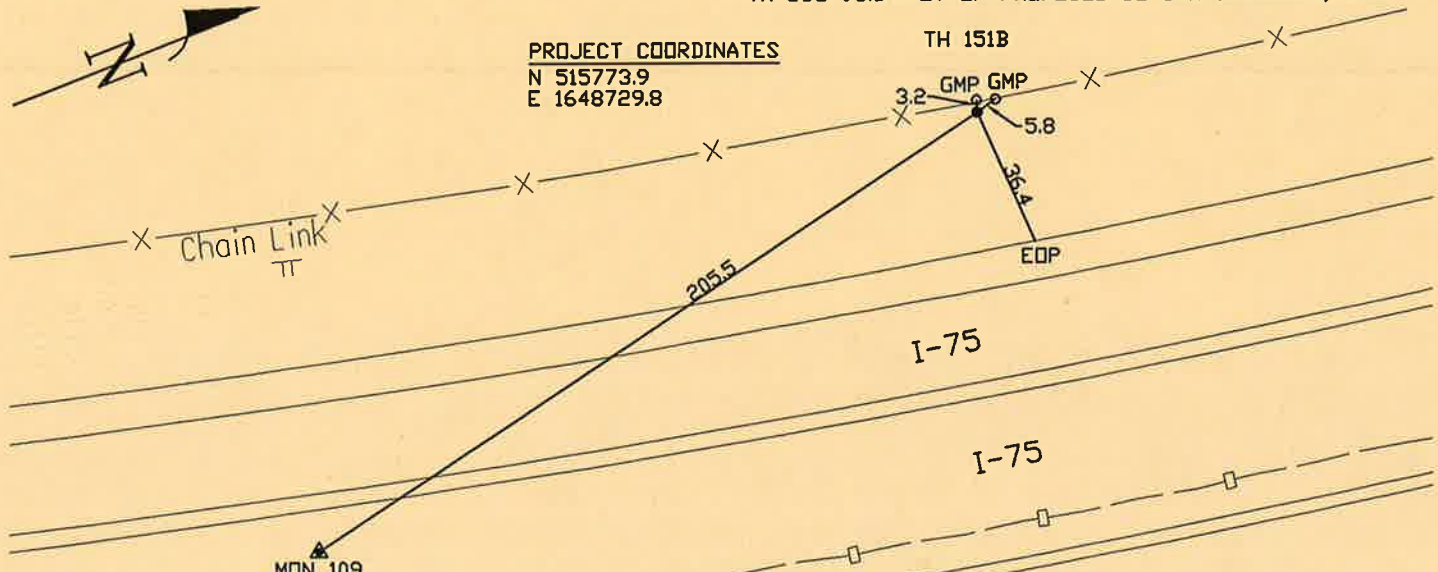
Facing
NORTHEAST



TH DUG 95.3'± LT OF PROPOSED CL STA 993+07.9±, I-75

PROJECT COORDINATES
N 515773.9
E 1648729.8

TH 151B



Handwritten signature: David R. Cole

- | | |
|---------------------------|--------------------|
| FO = Fiber-Optic Cable | CL = Centerline |
| MTD = Multi Tile Duct | T.C. = Tera Cotta |
| R/W = Rights of Way | PLAS. = Plastic |
| N.T.S. = Not to Scale | BL = Base Line |
| * = Not Shown on Plan | ELEC. = Electric |
| PCC = Precast Concrete | TELE = Telephone |
| COND. = Conduit | T.H. = Test Hole |
| CONC. = Concrete | SW = Sidewalk |
| O.D. = Outside Diameter | DW = Driveway |
| C.I. = Cast Iron | BM = Benchmark |
| D.I. = Ductile Iron | C.B. = Catch Basin |
| RPC = Rough Pour Concrete | GV = Gas Valve |

- .08" = 1"
- .16" = 2"
- .25" = 3"
- .33" = 4"
- .42" = 5"
- .50" = 6"
- .58" = 7"
- .67" = 8"
- .75" = 9"
- .83" = 10"
- .92" = 11"

- Sewer Manhole
- Test Hole
- ⊕ Fire Hydrant
- Pole
- Fence Line
- ⊕ Electric Manhole
- ⊕ T.S. = Traverse Station
- ⊕ Valve
- ⊕ Water Meter
- ⊕ Telephone Manhole
- ⊕ Telephone Pedestal

Performing out-of-sight work...with vision!

Note: To Eliminate mistakes and check this work, So-Deep suggests you scale and plot all dimensions onto the plans and review all elevations carefully. So-Deep is responsible only for information shown on our forms.



The Subsurface Utility Engineering Company

449 Munroe Falls Road
Tallmadge, OH 44278
(330) 794-4455

Test Hole Certification Form Utility Quality Level A Data

ASCE C/1 38-02

Corporate Headquarters
8397 Euclid Avenue
Manassas Park, VA 20111
(703) 361-6005

Control # **EZQE017**
Test Hole # **62**
Plan Scale **1" = 50'**
Sheet # **19**
Proposed **GRADE CHANGE**
Date **AUGUST 1, 2013**

City, County, State **HANCOCK CO., OHIO**
Gen. Loc. **I-75 S., JUST N. OF W. BIGELOW AVE. OVERPASS**
Recorded Size/Material/Type **8" STEEL GAS LINE**
Foreman/Truck#/Form By **T. / BARRETT / 221 / S. ERICKSON**

Condition of paving prior to work
NO PAVING

B.M. 1 Elev. = **834.68'**
is **CALCULATED**

Description: **(TBM#23) 1/2" I.R. SET, 66± LT OF PROPOSED CL
STA 994+28±, I-75**

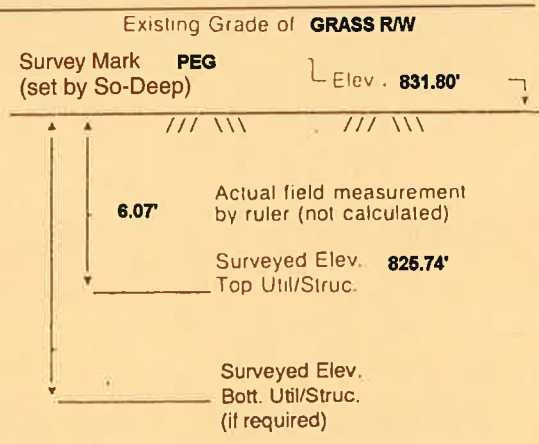
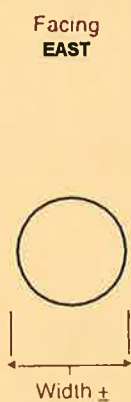
B.M. 2 Elev. = **831.75'**
is **CALCULATED**

Description: **(TBM#22) 1/2" I.R. SET, 74± LT OF PROPOSED CL
STA 991+38±, I-75**

Benchmarks Check **BY 0.01'**
Elevations are referenced to **B.M.#1**

So-Deep will attempt to use the BM/
HI most applicable to your
design. If however, BMs differ by more
than .05', resulting differences could
cause design conflicts.

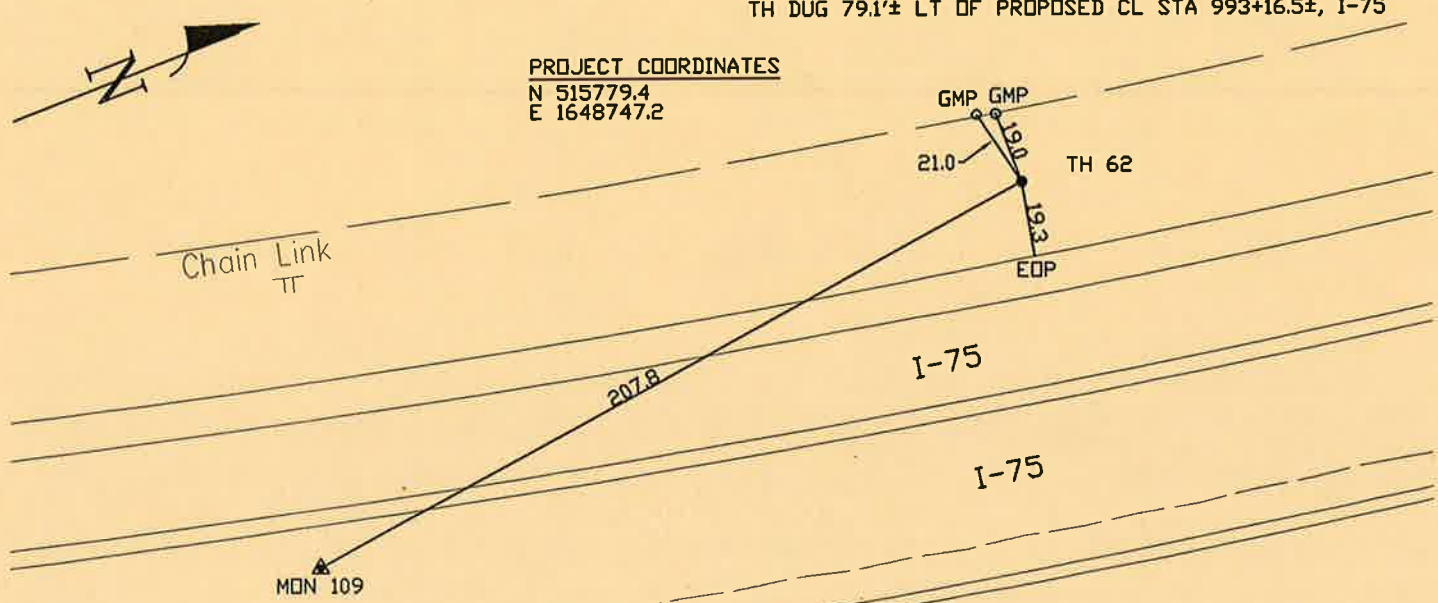
Recorded Size/Type of utility **WAS FOUND**
There **WERE NOT** additional utilities in the test hole
The utility **WAS** in good condition
Paving Thickness and type **NO PAVING**
Color of ribbon installed **YELLOW**
Soil Type **WET STICKY CLAY**
Truck Location **GRASS R/W**
T.H. tied to **PEG**
8 3/4" COATED STEEL GAS LINE *
Size/Material/Type
Portion of pipe exposed
for O.D. measurement:
FULL



Remarks: * **SIZE AND MATERIAL WAS CONFIRMED BY NICHOLAS J. DRUMMELSMITH SUNOCO INSPECTOR ON SITE. CELL (419) 455-3800.**

TH DUG 79.1± LT OF PROPOSED CL STA 993+16.5±, I-75

PROJECT COORDINATES
N 515779.4
E 1648747.2



- FO = Fiber-Optic Cable
- MTD = Multi Tile Duct
- R/W = Rights of Way
- N.T.S. = Not to Scale
- * = Not Shown on Plan
- PCC = Precast Concrete
- COND. = Conduit
- CONC. = Concrete
- O.D. = Outside Diameter
- C.I. = Cast Iron
- D.I. = Ductile Iron
- RPC = Rough Pour Concrete
- CL = Centerline
- T.C. = Tera Cotta
- PLAS. = Plastic
- BL = Base Line
- ELEC. = Electric
- TELE = Telephone
- T.H. = Test Hole
- SW = Sidewalk
- DW = Driveway
- BM = Benchmark
- C.B. = Catch Basin
- GV = Gas Valve

Performing out-of-sight work...with vision!TM

Note: To Eliminate mistakes and check this work, So-Deep suggests you scale and plot all dimensions onto the plans and review all elevations carefully. So-Deep is responsible only for information shown on our forms.

- .08" = 1"
- .16" = 2"
- .25" = 3"
- .33" = 4"
- .42" = 5"
- .50" = 6"
- .58" = 7"
- .67" = 8"
- .75" = 9"
- .83" = 10"
- .92" = 11"

- Sewer Manhole
- Test Hole
- ⊙ Fire Hydrant
- Pole
- Fence Line
- ⊕ Electric Manhole
- △ T.S. = Traverse Station
- ⊗ Valve
- ⊕ Water Meter
- ⊙ Telephone Manhole
- ⊞ Telephone Pedestal



The Subsurface Utility Engineering Company

449 Munroe Falls Road
Tallmadge, OH 44278
(330) 794-4455

Test Hole Certification Form Utility Quality Level A Data

ASCE C/I 38-02

Corporate Headquarters
8397 Euclid Avenue
Manassas Park, VA 20111
(703) 361-6005

Control # **EZQE017**
Test Hole # **63**
Plan Scale **1" = 50'**
Sheet # **19**
Proposed **GRADE CHANGE**
Date **AUGUST 1, 2013**

City, County, State **HANCOCK CO., OHIO**
Gen. Loc. **I-75 S., JUST N. OF W. BIGELOW AVE. OVERPASS**
Recorded Size/Material/Type **10" STEEL GAS LINE**
Foreman/Truck#/Form By **T. / BARRETT / 221 / S. ERICKSON**

Condition of paving prior to work
NO PAVING

B.M. 1 Elev. = **834.68'**
is **CALCULATED**

Description: **(TBM#23) 1/2" I.R. SET, 66± LT OF PROPOSED CL
STA 994+28±, I-75**

B.M. 2 Elev. = **831.75'**
is **CALCULATED**

Description: **(TBM#22) 1/2" I.R. SET, 74± LT OF PROPOSED CL
STA 991+38±, I-75**

Benchmarks Check **BY 0.01'**
Elevations are referenced to **B.M.#1**

So-Deep will attempt to use the BM/ HI most applicable to your design. If however, BMs differ by more than .05', resulting differences could cause design conflicts.

Recorded Size/Type of utility **WAS FOUND**

There **WERE NOT** additional utilities in the test hole

The utility **WAS** in good condition

Paving Thickness and type **NO PAVING**

Color of ribbon installed **YELLOW**

Soil Type **WET STICKY CLAY**

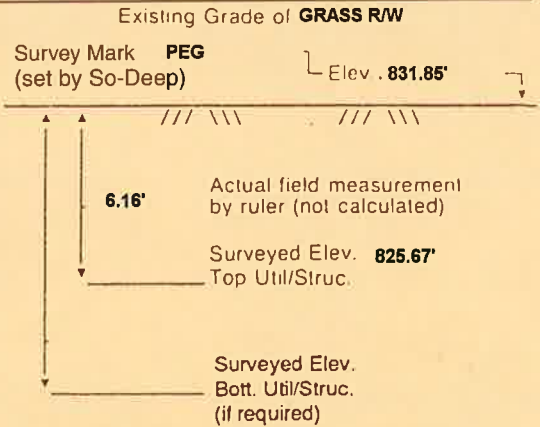
Truck Location **GRASS R/W**

T.H. tied to **PEG**

10 3/4" COATED STEEL GAS LINE *

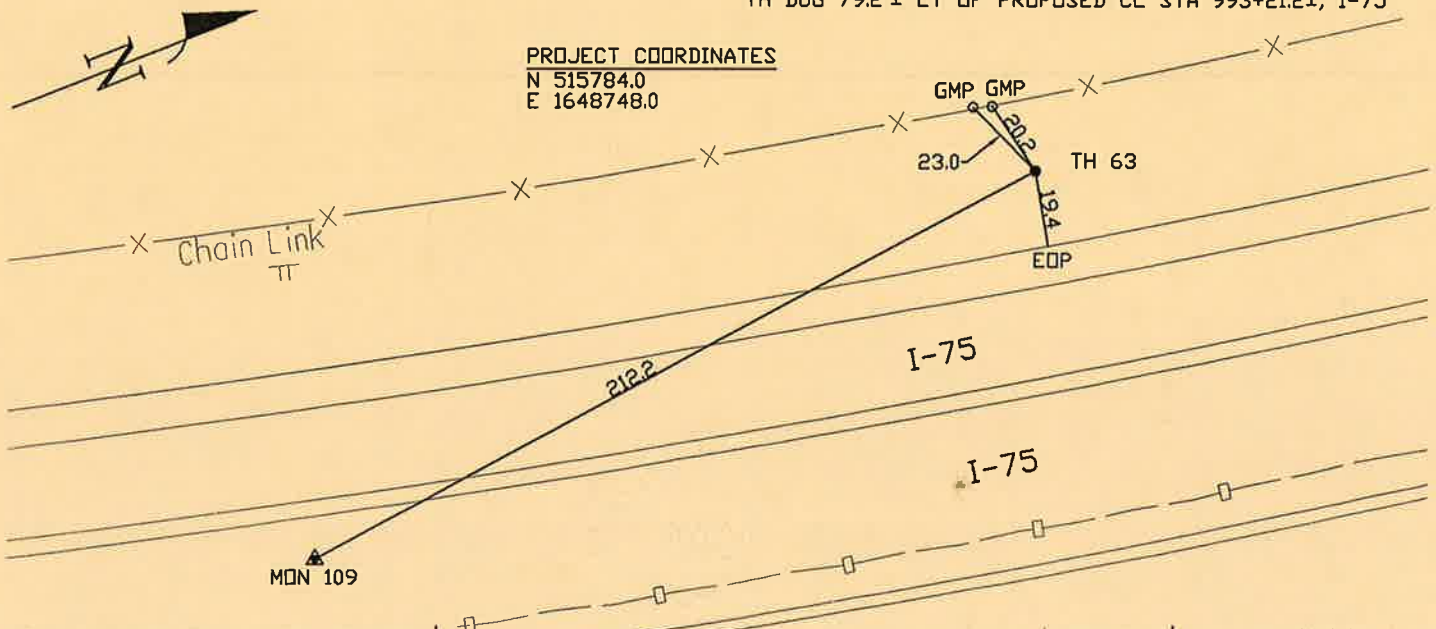
Size/Material/Type
Portion of pipe exposed
for O.D. measurement:
FULL

FACING
EAST



Remarks: * **SIZE AND MATERIAL WAS CONFIRMED BY NICHOLAS J. DRUMMELSMITH SUNOCO INSPECTOR ON SITE. CELL (419) 455-3800.**

TH DUG 79.2± LT OF PROPOSED CL STA 993+21.2±, I-75



- FO = Fiber-Optic Cable
- MTD = Multi Tile Duct
- R/W = Rights of Way
- N.T.S. = Not to Scale
- * = Not Shown on Plan
- PCC = Precast Concrete
- COND. = Conduit
- CONC. = Concrete
- O.D. = Outside Diameter
- C.I. = Cast Iron
- D.I. = Ductile Iron
- RPC = Rough Pour Concrete

- CL = Centerline
- T.C. = Tera Cotta
- PLAS. = Plastic
- BL = Base Line
- ELEC. = Electric
- TELE. = Telephone
- T.H. = Test Hole
- SW = Sidewalk
- DW = Driveway
- BM = Benchmark
- C.B. = Catch Basin
- GV = Gas Valve

Paul R. Cole

Performing out-of-sight work...with visionTM

Note: To Eliminate mistakes and check this work, So-Deep suggests you scale and plot all dimensions onto the plans and review all elevations carefully. So-Deep is responsible only for information shown on our forms.

- .08" = 1"
- .16" = 2"
- .25" = 3"
- .33" = 4"
- .42" = 5"
- .50" = 6"
- .58" = 7"
- .67" = 8"
- .75" = 9"
- .83" = 10"
- .92" = 11"

- Sewer Manhole
- Test Hole
- Fire Hydrant
- Pole
- Fence Line
- ⊕ Electric Manhole
- △ T.S. = Traverse Station
- ⊗ Valve
- ⊕ Water Meter
- ⊕ Telephone Manhole
- Telephone Pedestal