

**ITEM 614, MAINTAINING TRAFFIC**

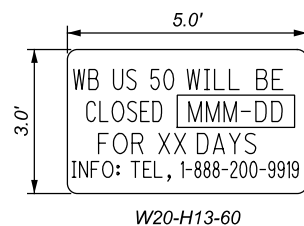
FOR FULL-DEPTH PAVEMENT REPLACEMENT A MINIMUM OF ONE LANE OF TRAFFIC IN THE EASTBOUND DIRECTION SHALL BE MAINTAINED AT ALL TIMES BY USE OF THE EXISTING PAVEMENT, THE COMPLETED PAVEMENT, ITEM 615 PAVEMENT FOR MAINTAINING TRAFFIC, AND ITEM 615 ROADS FOR MAINTAINING TRAFFIC. FOR PAVEMENT RESURFACING BOTH DIRECTIONS OF TRAFFIC SHALL BE MAINTAINED AT ALL TIMES BY USE OF THE EXISTING PAVEMENT AND THE COMPLETED PAVEMENT. EXPOSURE OF MILLED PAVEMENT SURFACE IS LIMITED TO 3 CONSECUTIVE CALENDAR DAYS WITH ADEQUATE SAFE PAVEMENT TRANSITIONS TO EXISTING SURFACES, AS APPROVED BY THE ENGINEER, BEING MAINTAINED BY THE CONTRACTOR.

THE ONE LANE EASTBOUND TRAFFIC SHALL BE MAINTAINED AT ALL TIMES FOR A PERIOD NOT TO EXCEED 90 CALENDAR DAYS, WHEN WESTBOUND TRAFFIC MAY BE DETOURED AS SHOWN ON SHEET 14. A DISINCENTIVE SHALL BE ASSESSED IN THE AMOUNT OF \$3,000 PER DAY FOR EACH CALENDAR DAY THE WESTBOUND ROADWAY REMAINS CLOSED TO TRAFFIC BEYOND THE SPECIFIED LIMIT.

LENGTH AND DURATION OF LANE CLOSURES AND RESTRICTIONS SHALL BE AT THE APPROVAL OF THE ENGINEER. IT IS THE INTENT TO MINIMIZE THE IMPACT TO THE TRAVELING PUBLIC. LANE CLOSURES OR RESTRICTIONS OVER SEGMENTS OF THE PROJECT IN WHICH NO WORK IS ANTICIPATED WITHIN A REASONABLE TIME FRAME, AS DETERMINED BY THE ENGINEER, SHALL NOT BE PERMITTED. THE LEVEL OF UTILIZATION OF MAINTENANCE OF TRAFFIC DEVICES SHALL BE COMMENSURATE WITH THE WORK IN PROGRESS.

NOTICE OF CLOSURE SIGNS (W20-H13) SHALL BE ERECTED BY THE CONTRACTOR PRIOR TO THE SCHEDULED LANE CLOSURE IN ACCORDANCE WITH THE NOTICE OF CLOSURE TIME TABLE BELOW.

THE SIGNS SHALL BE ERECTED ON THE RIGHT-HAND SIDE OF THE ROAD FACING TRAFFIC. THEY SHALL BE PLACED SO AS NOT TO INTERFERE WITH THE VISIBILITY OF ANY OTHER TRAFFIC CONTROL SIGNS. ON ROADWAYS, THEY SHOULD BE ERECTED AT OR NEAR THE POINT OF CLOSURE.



NOTICE OF CLOSURE SIGN TIME TABLE		
ITEM	DURATION OF CLOSURE	SIGN DISPLAYED TO PUBLIC
ROAD CLOSURES	>=2 WEEKS	14 CALENDAR DAYS PRIOR TO CLOSURE
	> 12 HOURS & < 2 WEEKS	7 CALENDAR DAYS PRIOR TO CLOSURE
	<= 12 HOURS	2 BUSINESS DAYS PRIOR TO CLOSURE

THE SIGN SHALL DISPLAY THE DATE OF THE CLOSURE IN MMM-DD FORMAT AND THE NUMBER OF DAYS OF THE CLOSURE. THE LAST LINE OF THE W20-H13 SIGN LISTS A PHONE NUMBER WHICH A MOTORIST MAY CALL FOR ADDITIONAL INFORMATION. THIS IS TO BE A SPECIFIC OFFICE WITHIN THE DISTRICT RATHER THAN THE GENERAL SWITCHBOARD NUMBER.

**ITEM 614, MAINTAINING TRAFFIC (CONT'D)**

THE CONTRACTOR SHALL PROVIDE, ERECT AND MAINTAIN STANDARD 48 X 30 INCH ROAD CLOSED SIGNS, SIGN SUPPORTS, BARRICADES AND LIGHTS, AS DETAILED IN SCD MT-101.60 AT THE FOLLOWING LOCATIONS DURING PERIODS IN WHICH THE AFFECTED ROADS ARE CLOSED TO TRAFFIC.

APPROXIMATELY 850' WEST OF CARPER LANE (TOWNSHIP ROAD 383), OPPOSITE MAILBOX NUMBERED 9785, EAST APPROXIMATELY 30'.

THE CONTRACTOR SHALL PROVIDE, ERECT AND MAINTAIN SIGNS AND SIGN SUPPORTS, AS DETAILED IN THE OHIO MANUAL OF UNIFORM TRAFFIC CONTROL DEVICES, AND BARRICADES OF THE TYPE AND LOCATION AS FOLLOWS:

TYPE III BARRICADE, LOCATED AS PREVIOUSLY DESCRIBED

ALL WORK AND TRAFFIC CONTROL DEVICES SHALL BE IN ACCORDANCE WITH C&MS 614 AND OTHER APPLICABLE PORTIONS OF THE SPECIFICATIONS, AS WELL AS THE OHIO MANUAL OF UNIFORM TRAFFIC CONTROL DEVICES. PAYMENT FOR ALL LABOR, EQUIPMENT AND MATERIALS SHALL BE INCLUDED IN THE LUMP SUM CONTRACT PRICE FOR ITEM 614, MAINTAINING TRAFFIC, UNLESS SEPARATELY ITEMIZED IN THE PLAN.

**TRENCH FOR WIDENING**

TRENCH EXCAVATION FOR BASE WIDENING SHALL BE ONLY ON ONE SIDE OF THE PAVEMENT AT A TIME. THE OPEN TRENCH SHALL BE ADEQUATELY MAINTAINED AND PROTECTED WITH DRUMS OR BARRICADES AT ALL TIMES. PLACEMENT OF PROPOSED SUBBASE AND BASE MATERIAL SHALL FOLLOW AS CLOSELY AS POSSIBLE BEHIND EXCAVATION OPERATIONS. THE LENGTH OF WIDENING TRENCH WHICH IS OPEN AT ANY ONE TIME SHALL BE HELD TO A MINIMUM AND SHALL AT ALL TIMES BE SUBJECT TO APPROVAL OF THE ENGINEER.

**OVERNIGHT TRENCH CLOSING**

THE BASE WIDENING SHALL BE COMPLETED TO A DEPTH OF NO MORE THAN 3 INCHES BELOW THE EXISTING PAVEMENT BY THE END OF EACH WORK DAY. NO TRENCH SHALL BE LEFT OPEN OVERNIGHT EXCEPT FOR A SHORT LENGTH (25 FEET OR LESS) OF A WORK SECTION AT THE END OF THE TRENCH. IN CASE WORK MUST BE SUSPENDED BECAUSE OF INCLEMENT WEATHER OR OTHER REASONS, THE TRENCH FOR THE UNCOMPLETED BASE WIDENING SHALL BE BACKFILLED AT THE DIRECTION OF THE ENGINEER.

**DUST CONTROL**

THE CONTRACTOR SHALL FURNISH AND APPLY WATER FOR DUST CONTROL AS DIRECTED BY THE ENGINEER. THE FOLLOWING ESTIMATED QUANTITIES HAVE BEEN INCLUDED FOR DUST CONTROL PURPOSES:

ITEM 616, WATER 36 M. GAL.

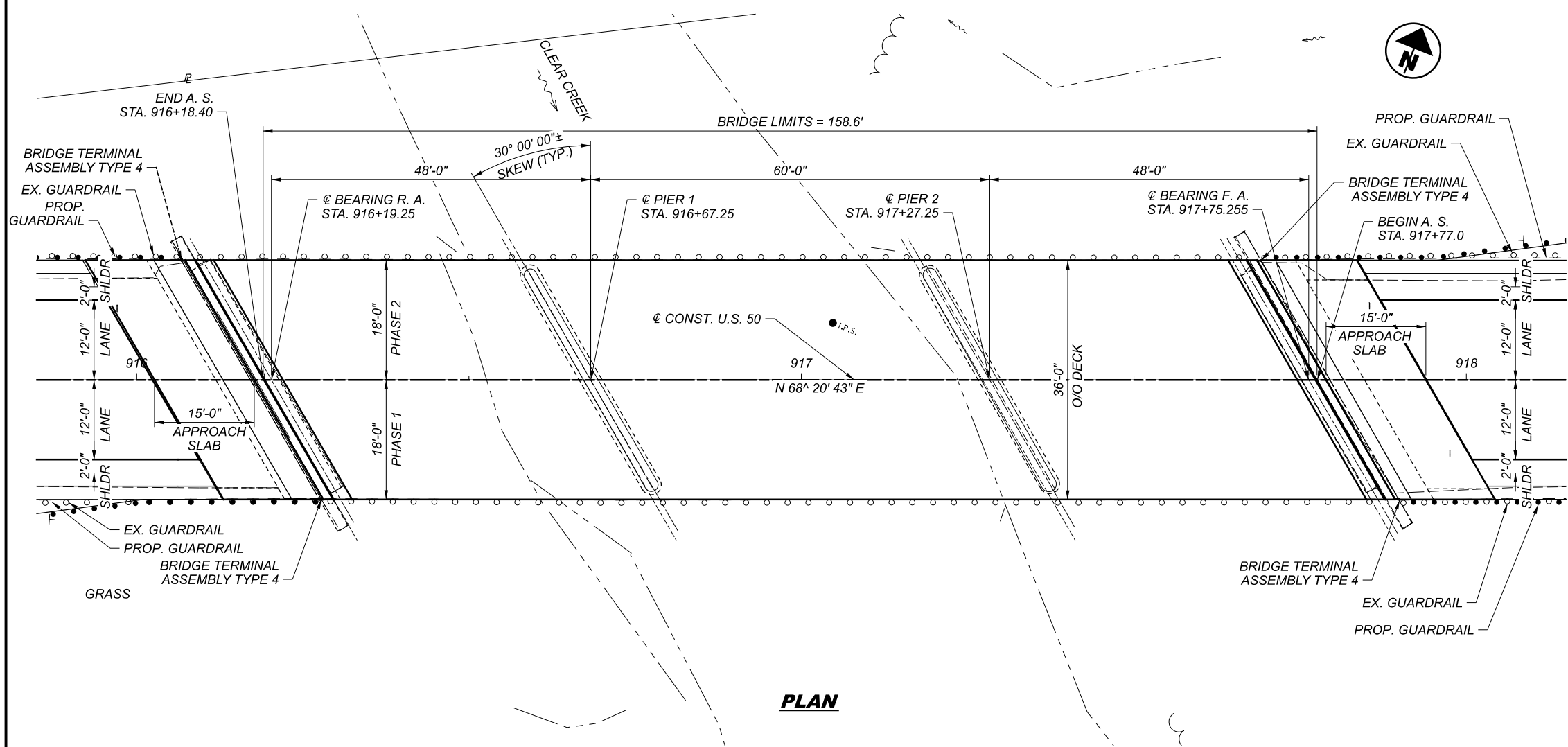
**WORK ZONE MARKINGS AND SIGNS**

ESTIMATED QUANTITIES OF WORK HAVE BEEN CARRIED TO THE GENERAL SUMMARY FOR USE AT LOCATIONS IDENTIFIED BY THE ENGINEER FOR WORK ZONE PAVEMENT MARKINGS AND SIGNS PER THE REQUIREMENTS OF C&MS 614.04 AND 614.11.

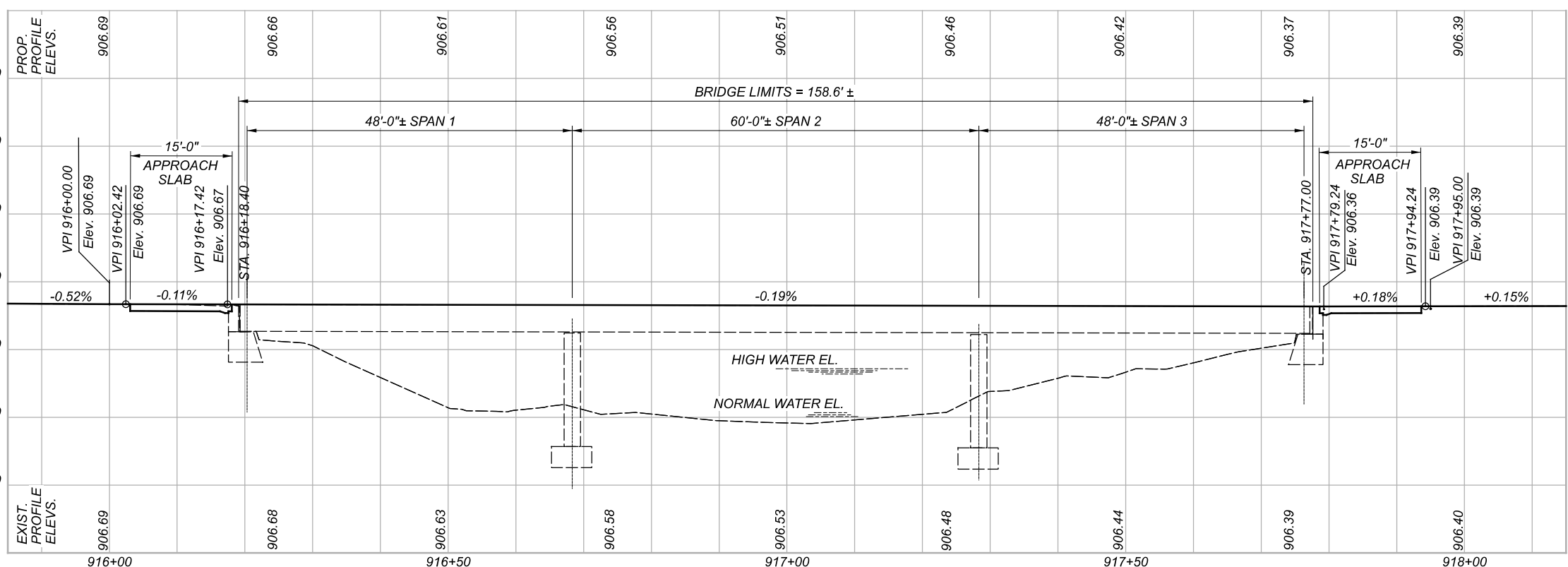
SHEET NUM.							PART.			ITEM	ITEM EXT	GRAND TOTAL	UNIT	DESCRIPTION	SEE SHEET NO.	
8	9	27			114		01/S<2/ PV	02/STR/ PV	03/STR/ BR							
													<b>ROADWAY</b>			
							LS				201	11000	LS	CLEARING AND GRUBBING		
		23,387						23,387			202	23000	23,387	SY	PAVEMENT REMOVED	
		3,594						3,594			202	32000	3,594	FT	CURB REMOVED	
		664						664			202	32800	664	SY	CONCRETE SLOPE PROTECTION REMOVED	
		2,717						2,717			202	38000	2,717	FT	GUARDRAIL REMOVED	
						3,680		3,680			203	10000	3,680	CY	EXCAVATION	
						6,403		6,403			203	10001	6,403	CY	EXCAVATION, AS PER PLAN	9
						3,023		3,023			203	20000	3,023	CY	EMBANKMENT	
						6,403		6,403			203	20001	6,403	CY	EMBANKMENT, AS PER PLAN	9
	1,459	1,200						2,659			204	10000	2,659	SY	SUBGRADE COMPACTION	
	810							810			204	13001	810	CY	EXCAVATION OF SUBGRADE, AS PER PLAN	9
	810							810			204	20000	810	CY	EMBANKMENT	
						704		704			206	10500	704	TON	CEMENT	
						27,166		27,166			206	11000	27,166	SY	CURING COAT	
						27,166		27,166			206	15010	27,166	SY	CEMENT STABILIZED SUBGRADE, 12 INCHES DEEP	
						2,400		2,400			606	15050	2,400	FT	GUARDRAIL, TYPE MGS	
						16		16			606	26150	16	EACH	ANCHOR ASSEMBLY, MGS TYPE E (NCHRP 350/MASH 2016)	
						2		2			606	26550	2	EACH	ANCHOR ASSEMBLY, MGS TYPE T	
						8		8			606	35140	8	EACH	BRIDGE TERMINAL ASSEMBLY, TYPE 4	
						14		14			SPECIAL	69050000	14	EACH	MAILBOX SUPPORT	8
						14		14			SPECIAL	69050350	14	EACH	MAILBOX REMOVED AND RESET	8
	LS							LS			878	25000	LS		INSPECTION AND COMPACTION TESTING OF UNBOUND MATERIALS	
															<b>EROSION CONTROL</b>	
						609		609			659	00300	609	CY	TOPSOIL	
	26,934							26,934			659	10000	26,934	SY	SEEDING AND MULCHING	
	1,347							1,347			659	14000	1,347	SY	REPAIR SEEDING AND MULCHING	
	1,347							1,347			659	15000	1,347	SY	INTER-SEEDING	
								3.6			659	20000	3.6	TON	COMMERCIAL FERTILIZER	
								5.6			659	31000	5.6	ACRE	LIME	
								145			659	35000	145	MGAL	WATER	
						3,646		3,646			670	00500	3,646	SY	SLOPE EROSION PROTECTION	
						799		799			670	00720	799	SY	DITCH EROSION PROTECTION MAT, TYPE B	
								LUMP			832	15000	LS		STORM WATER POLLUTION PREVENTION PLAN	
								LUMP			832	15002	LS		STORM WATER POLLUTION PREVENTION INSPECTIONS	
								LUMP			832	15010	LS		STORM WATER POLLUTION PREVENTION INSPECTION SOFTWARE	
								98,300			832	30000	98,300	EACH	EROSION CONTROL	
						693		693			836	10000	693	SY	SEEDING AND EROSION CONTROL WITH TURF REINFORCING MAT, TYPE 1	
															<b>DRAINAGE</b>	
						0.89		0.89			601	32204	0.89	CY	ROCK CHANNEL PROTECTION, TYPE C WITH GEOTEXTILE FABRIC	
						496		496			601	37501	496	FT	PAVED GUTTER, TYPE 1-2, AS PER PLAN	5
						1.07		1.07			602	20000	1.07	CY	CONCRETE MASONRY	
						2,511		2,511			605	31100	2,511	FT	AGGREGATE DRAINS	
100								100			611	00900	100	FT	6" CONDUIT, TYPE B	
100								100			611	01400	100	FT	6" CONDUIT, TYPE E	
100								100			611	01500	100	FT	6" CONDUIT, TYPE F	
						6		6			611	10200	6	FT	24" CONDUIT, TYPE A, 707.33	







**PLAN**



**PROFILE ALONG CENTERLINE U.S. 50**

**BENCHMARK DATA**

BM #1 STA.	916+05.37	ELEV.	906.40	OFFSET	20.79'	LT.
BM #2 STA.	931+64.62	ELEV.	903.23	OFFSET	24.63'	LT.
BM #3 STA.	934+27.20	ELEV.	912.68	OFFSET	38.31'	RT.

FOR ADDITIONAL BENCHMARK INFORMATION. SEE ROADWAY PLAN SHEET

**NOTES**

EARTHWORK LIMITS SHOWN ARE APPROXIMATE. ACTUAL SLOPES SHALL CONFORM TO PLAN CROSS SECTIONS.

**DESIGN TRAFFIC:**

2021 ADT = 4,005	2031 ADTT = 200
2031 ADT = 3,792	2031 ADTT = 190
DIRECTIONAL DISTRIBUTION = 58%	

**PROPOSED WORK**

1. REMOVE EXISTING 1/4"± EPOXY OVERLAY ON BRIDGE DECK & 1/4"± ASPHALT OVERLAY ON APPROACH SLABS.
2. REMOVE AND REPLACE APPROACH SLABS.
3. REMOVE AND REPLACE STRIP SEAL JOINTS.
4. SEAL THE BRIDGE DECK WITH SRS.
5. REFURBISH ABUTMENT BEARINGS.

**EXISTING STRUCTURE**

TYPE: THREE SPAN CONTINUOUS STEEL BEAM WITH REINFORCED CONCRETE DECK AND SUBSTRUCTURE

SPANS: 48'-0"±, 60'-0"±, 48'-0"± C/C BEARINGS

ROADWAY: 36'-0"± F/F RAIL

LOADING: HS 20-44

SKEW: 30° 0' 0" RIGHT FORWARD

WEARING SURFACE: 1/4" OVERLAY

APPROACH SLABS: 15'-0"± LONG

ALIGNMENT: TANGENT

CROWN: 3/16"±/FT.

STRUCTURE FILE NUMBER: 3600785

DATE BUILT: 1954, REHAB 1987

DISPOSITION: TO BE REHABILITATED

**PROPOSED STRUCTURE**

TYPE: THREE SPAN CONTINUOUS STEEL BEAM WITH REINFORCED CONCRETE DECK AND SUBSTRUCTURE

SPANS: 48'-0"±, 60'-0"±, 48'-0"± C/C BEARINGS

ROADWAY: 36'-0"± F/F RAIL

LOADING: HS-20-44

SKEW: 30° 0' 0" RIGHT FORWARD

WEARING SURFACE: SRS SEALER

APPROACH SLABS: 15'-0" LONG

ALIGNMENT: TANGENT

CROWN: 0.016

DECK AREA: 5724 SF

COORDINATES: LATITUDE 39° 12' 45.43"  
 LONGITUDE 83° 32' 58.69"

**SITE PLAN**  
**BRIDGE NO. HIG-50-1735**  
**OVER CLEAR CREEK**



DESIGN AGENCY

6350 PRESIDENTIAL GATEWAY  
 COLUMBUS, OHIO 43231  
 (614) 823-4949

DESIGNER/CHECKER  
 JAS JGM

REVIEWER  
 JWE 01/14/22

PROJECT ID  
 100502

SUBSET	TOTAL
1	7

SHEET	TOTAL
P.154	172

ESTIMATED QUANTITIES								
ITEM	EXT.	QUANTITY	UNIT	DESCRIPTION	ABUT.	SUPER.	GEN.	SHEET NO.
202	11203	LUMP	LS	PORTIONS OF STRUCTURE REMOVED, OVER 20 FOOT SPAN, AS PER PLAN			LUMP	2/7
202	22900	121	SY	APPROACH SLAB REMOVED		121		
509	10000	836	POUND	EPOXY COATED REINFORCING STEEL	836			
510	10001	136	EACH	DOWEL HOLES WITH NONSHRINK, NONMETALLIC GROUT, AS PER PLAN	136			2/7
511	21520	6	CY	CLASS QC2 CONCRETE, SUPERSTRUCTURE		6		
511	45710	4	CY	CLASS QC1 CONCRETE, ABUTMENT	4			
512	10400	634	SY	TREATING OF CONCRETE BRIDGE DECK WITH SRS		634		
516	11211	84	FT	STRUCTURAL EXPANSION JOINT INCLUDING ELASTOMERIC STRIP SEAL, AS PER PLAN	84			2/7
516	13600	2	SF	1" PREFORMED EXPANSION JOINT FILLER		2		
516	31010	84	FT	2" DEEP JOINT SEALER	84			
516	45305	10	EACH	REFURBISH BEARING DEVICES, AS PER PLAN	10			2/7
516	47001	LUMP	LS	JACKING AND TEMPORARY SUPPORT OF SUPERSTRUCTURE, AS PER PLAN	LUMP			2/7
526	10000	120	SY	REINFORCED CONCRETE APPROACH SLAB (T = 12")		120		
526	90010	84	FT	TYPE A INSTALLATION		84		
897	01010	755	SY	PAVEMENT PLANING, ASPHALT CONCRETE, CLASS A			755	

ESTIMATED QUANTITIES  
 BRIDGE NO. HIG-50-1735  
 OVER CLEAR CREEK



DESIGNER	JGM
REVIEWER	JWE 01/14/22
PROJECT ID	100502
SUBSET	TOTAL
3	7
SHEET	TOTAL
P.156	172