

ITEM 614, MAINTAINING TRAFFIC

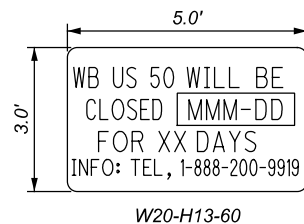
FOR FULL-DEPTH PAVEMENT REPLACEMENT A MINIMUM OF ONE LANE OF TRAFFIC IN THE EASTBOUND DIRECTION SHALL BE MAINTAINED AT ALL TIMES BY USE OF THE EXISTING PAVEMENT, THE COMPLETED PAVEMENT, ITEM 615 PAVEMENT FOR MAINTAINING TRAFFIC, AND ITEM 615 ROADS FOR MAINTAINING TRAFFIC. FOR PAVEMENT RESURFACING BOTH DIRECTIONS OF TRAFFIC SHALL BE MAINTAINED AT ALL TIMES BY USE OF THE EXISTING PAVEMENT AND THE COMPLETED PAVEMENT. EXPOSURE OF MILLED PAVEMENT SURFACE IS LIMITED TO 3 CONSECUTIVE CALENDAR DAYS WITH ADEQUATE SAFE PAVEMENT TRANSITIONS TO EXISTING SURFACES, AS APPROVED BY THE ENGINEER, BEING MAINTAINED BY THE CONTRACTOR.

THE ONE LANE EASTBOUND TRAFFIC SHALL BE MAINTAINED AT ALL TIMES FOR A PERIOD NOT TO EXCEED 90 CALENDAR DAYS, WHEN WESTBOUND TRAFFIC MAY BE DETOURED AS SHOWN ON SHEET 14. A DISINCENTIVE SHALL BE ASSESSED IN THE AMOUNT OF \$3,000 PER DAY FOR EACH CALENDAR DAY THE WESTBOUND ROADWAY REMAINS CLOSED TO TRAFFIC BEYOND THE SPECIFIED LIMIT.

LENGTH AND DURATION OF LANE CLOSURES AND RESTRICTIONS SHALL BE AT THE APPROVAL OF THE ENGINEER. IT IS THE INTENT TO MINIMIZE THE IMPACT TO THE TRAVELING PUBLIC. LANE CLOSURES OR RESTRICTIONS OVER SEGMENTS OF THE PROJECT IN WHICH NO WORK IS ANTICIPATED WITHIN A REASONABLE TIME FRAME, AS DETERMINED BY THE ENGINEER, SHALL NOT BE PERMITTED. THE LEVEL OF UTILIZATION OF MAINTENANCE OF TRAFFIC DEVICES SHALL BE COMMENSURATE WITH THE WORK IN PROGRESS.

NOTICE OF CLOSURE SIGNS (W20-H13) SHALL BE ERECTED BY THE CONTRACTOR PRIOR TO THE SCHEDULED LANE CLOSURE IN ACCORDANCE WITH THE NOTICE OF CLOSURE TIME TABLE BELOW.

THE SIGNS SHALL BE ERECTED ON THE RIGHT-HAND SIDE OF THE ROAD FACING TRAFFIC. THEY SHALL BE PLACED SO AS NOT TO INTERFERE WITH THE VISIBILITY OF ANY OTHER TRAFFIC CONTROL SIGNS. ON ROADWAYS, THEY SHOULD BE ERECTED AT OR NEAR THE POINT OF CLOSURE.



NOTICE OF CLOSURE SIGN TIME TABLE		
ITEM	DURATION OF CLOSURE	SIGN DISPLAYED TO PUBLIC
ROAD CLOSURES	>=2 WEEKS	14 CALENDAR DAYS PRIOR TO CLOSURE
	> 12 HOURS & < 2 WEEKS	7 CALENDAR DAYS PRIOR TO CLOSURE
	<= 12 HOURS	2 BUSINESS DAYS PRIOR TO CLOSURE

THE SIGN SHALL DISPLAY THE DATE OF THE CLOSURE IN MMM-DD FORMAT AND THE NUMBER OF DAYS OF THE CLOSURE. THE LAST LINE OF THE W20-H13 SIGN LISTS A PHONE NUMBER WHICH A MOTORIST MAY CALL FOR ADDITIONAL INFORMATION. THIS IS TO BE A SPECIFIC OFFICE WITHIN THE DISTRICT RATHER THAN THE GENERAL SWITCHBOARD NUMBER.

ITEM 614, MAINTAINING TRAFFIC (CONT'D)

THE CONTRACTOR SHALL PROVIDE, ERECT AND MAINTAIN STANDARD 48 X 30 INCH ROAD CLOSED SIGNS, SIGN SUPPORTS, BARRICADES AND LIGHTS, AS DETAILED IN SCD MT-101.60 AT THE FOLLOWING LOCATIONS DURING PERIODS IN WHICH THE AFFECTED ROADS ARE CLOSED TO TRAFFIC.

APPROXIMATELY 850' WEST OF CARPER LANE (TOWNSHIP ROAD 383), OPPOSITE MAILBOX NUMBERED 9785, EAST APPROXIMATELY 30'.

THE CONTRACTOR SHALL PROVIDE, ERECT AND MAINTAIN SIGNS AND SIGN SUPPORTS, AS DETAILED IN THE OHIO MANUAL OF UNIFORM TRAFFIC CONTROL DEVICES, AND BARRICADES OF THE TYPE AND LOCATION AS FOLLOWS:

TYPE III BARRICADE, LOCATED AS PREVIOUSLY DESCRIBED

ALL WORK AND TRAFFIC CONTROL DEVICES SHALL BE IN ACCORDANCE WITH C&MS 614 AND OTHER APPLICABLE PORTIONS OF THE SPECIFICATIONS, AS WELL AS THE OHIO MANUAL OF UNIFORM TRAFFIC CONTROL DEVICES. PAYMENT FOR ALL LABOR, EQUIPMENT AND MATERIALS SHALL BE INCLUDED IN THE LUMP SUM CONTRACT PRICE FOR ITEM 614, MAINTAINING TRAFFIC, UNLESS SEPARATELY ITEMIZED IN THE PLAN.

TRENCH FOR WIDENING

TRENCH EXCAVATION FOR BASE WIDENING SHALL BE ONLY ON ONE SIDE OF THE PAVEMENT AT A TIME. THE OPEN TRENCH SHALL BE ADEQUATELY MAINTAINED AND PROTECTED WITH DRUMS OR BARRICADES AT ALL TIMES. PLACEMENT OF PROPOSED SUBBASE AND BASE MATERIAL SHALL FOLLOW AS CLOSELY AS POSSIBLE BEHIND EXCAVATION OPERATIONS. THE LENGTH OF WIDENING TRENCH WHICH IS OPEN AT ANY ONE TIME SHALL BE HELD TO A MINIMUM AND SHALL AT ALL TIMES BE SUBJECT TO APPROVAL OF THE ENGINEER.

OVERNIGHT TRENCH CLOSING

THE BASE WIDENING SHALL BE COMPLETED TO A DEPTH OF NO MORE THAN 3 INCHES BELOW THE EXISTING PAVEMENT BY THE END OF EACH WORK DAY. NO TRENCH SHALL BE LEFT OPEN OVERNIGHT EXCEPT FOR A SHORT LENGTH (25 FEET OR LESS) OF A WORK SECTION AT THE END OF THE TRENCH. IN CASE WORK MUST BE SUSPENDED BECAUSE OF INCLEMENT WEATHER OR OTHER REASONS, THE TRENCH FOR THE UNCOMPLETED BASE WIDENING SHALL BE BACKFILLED AT THE DIRECTION OF THE ENGINEER.

DUST CONTROL

THE CONTRACTOR SHALL FURNISH AND APPLY WATER FOR DUST CONTROL AS DIRECTED BY THE ENGINEER. THE FOLLOWING ESTIMATED QUANTITIES HAVE BEEN INCLUDED FOR DUST CONTROL PURPOSES:

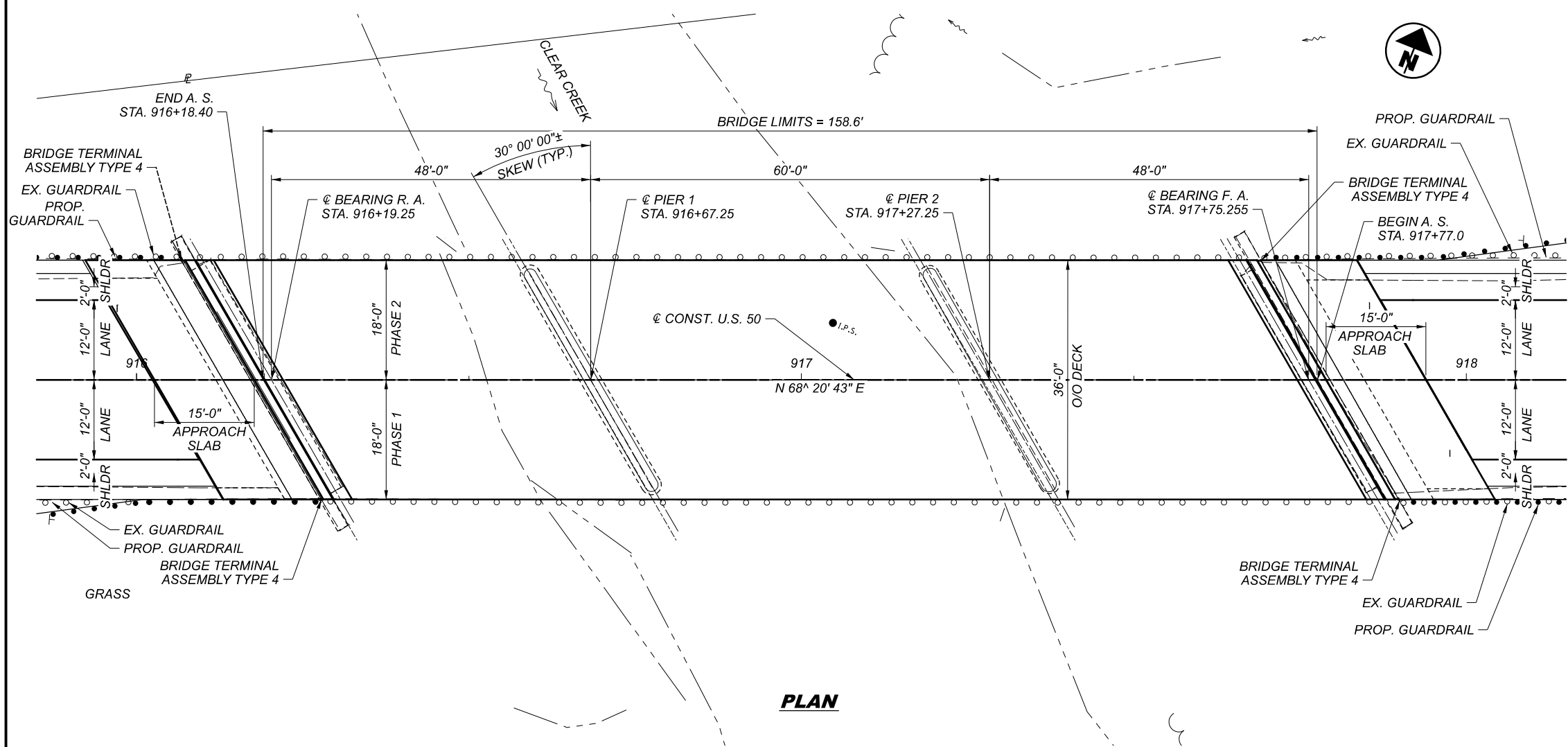
ITEM 616, WATER 36 M. GAL.

WORK ZONE MARKINGS AND SIGNS

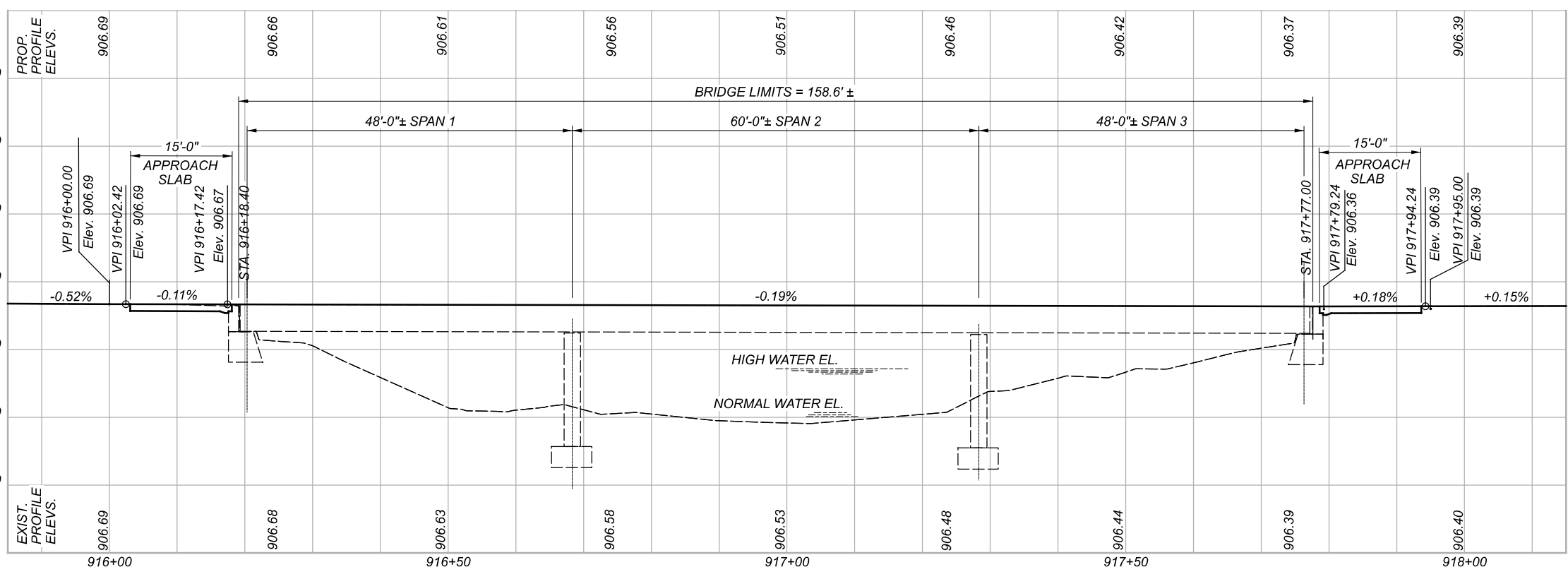
ESTIMATED QUANTITIES OF WORK HAVE BEEN CARRIED TO THE GENERAL SUMMARY FOR USE AT LOCATIONS IDENTIFIED BY THE ENGINEER FOR WORK ZONE PAVEMENT MARKINGS AND SIGNS PER THE REQUIREMENTS OF C&MS 614.04 AND 614.11.

DESIGN AGENCY

 6350 PRESIDENTIAL GATEWAY
 COLUMBUS, OHIO 43231
 (614) 823-4549
 DESIGNER
 JAS
 REVIEWER
 BBB 01/14/22
 PROJECT ID
 100502
 SHEET TOTAL
 P.10 | 172



PLAN



PROFILE ALONG CENTERLINE U.S. 50

BENCHMARK DATA

BM #1 STA.	916+05.37	ELEV.	906.40	OFFSET	20.79'	LT.
BM #2 STA.	931+64.62	ELEV.	903.23	OFFSET	24.63'	LT.
BM #3 STA.	934+27.20	ELEV.	912.68	OFFSET	38.31'	RT.

FOR ADDITIONAL BENCHMARK INFORMATION. SEE ROADWAY PLAN SHEET

NOTES

EARTHWORK LIMITS SHOWN ARE APPROXIMATE. ACTUAL SLOPES SHALL CONFORM TO PLAN CROSS SECTIONS.

DESIGN TRAFFIC:
 2021 ADT = 4,005 2031 ADTT = 200
 2031 ADT = 3,792 2031 ADTT = 190
 DIRECTIONAL DISTRIBUTION = 58%



PROPOSED WORK

1. REMOVE EXISTING 1/4"± EPOXY OVERLAY ON BRIDGE DECK & 1/4"± ASPHALT OVERLAY ON APPROACH SLABS.
2. REMOVE AND REPLACE APPROACH SLABS.
3. REMOVE AND REPLACE STRIP SEAL JOINTS.
4. SEAL THE BRIDGE DECK WITH SRS.
5. REFURBISH ABUTMENT BEARINGS.

EXISTING STRUCTURE

TYPE: THREE SPAN CONTINUOUS STEEL BEAM WITH REINFORCED CONCRETE DECK AND SUBSTRUCTURE
 SPANS: 48'-0"±, 60'-0"±, 48'-0"± C/C BEARINGS
 ROADWAY: 36'-0"± F/F RAIL
 LOADING: HS 20-44
 SKEW: 30° 0' 0" RIGHT FORWARD
 WEARING SURFACE: 1/4" OVERLAY
 APPROACH SLABS: 15'-0"± LONG
 ALIGNMENT: TANGENT
 CROWN: 3/16"±/FT.
 STRUCTURE FILE NUMBER: 3600785
 DATE BUILT: 1954, REHAB 1987
 DISPOSITION: TO BE REHABILITATED

PROPOSED STRUCTURE

TYPE: THREE SPAN CONTINUOUS STEEL BEAM WITH REINFORCED CONCRETE DECK AND SUBSTRUCTURE
 SPANS: 48'-0"±, 60'-0"±, 48'-0"± C/C BEARINGS
 ROADWAY: 36'-0"± F/F RAIL
 LOADING: HS-20-44
 SKEW: 30° 0' 0" RIGHT FORWARD
 WEARING SURFACE: SRS SEALER
 APPROACH SLABS: 15'-0" LONG
 ALIGNMENT: TANGENT
 CROWN: 0.016
 DECK AREA: 5724 SF
 COORDINATES: LATITUDE 39° 12' 45.43"
 LONGITUDE 83° 32' 58.69"

SITE PLAN
 BRIDGE NO. HIG-50-1735
 OVER CLEAR CREEK

DESIGN AGENCY

 6350 PRESIDENTIAL GATEWAY
 COLUMBUS, OHIO 43231
 (614) 823-4949
 DESIGNER/CHECKER
 JAS | JGM
 REVIEWER
 JWE 01/14/22
 PROJECT ID
 100502
 SUBSET TOTAL
 1 7
 SHEET TOTAL
 P.154 172

ESTIMATED QUANTITIES								
ITEM	EXT.	QUANTITY	UNIT	DESCRIPTION	ABUT.	SUPER.	GEN.	SHEET NO.
202	11203	LUMP	LS	PORTIONS OF STRUCTURE REMOVED, OVER 20 FOOT SPAN, AS PER PLAN			LUMP	2/7
202	22900	121	SY	APPROACH SLAB REMOVED		121		
509	10000	836	POUND	EPOXY COATED REINFORCING STEEL	836			
510	10001	136	EACH	DOWEL HOLES WITH NONSHRINK, NONMETALLIC GROUT, AS PER PLAN	136			2/7
511	21520	6	CY	CLASS QC2 CONCRETE, SUPERSTRUCTURE		6		
511	45710	4	CY	CLASS QC1 CONCRETE, ABUTMENT	4			
512	10400	634	SY	TREATING OF CONCRETE BRIDGE DECK WITH SRS		634		
516	11211	84	FT	STRUCTURAL EXPANSION JOINT INCLUDING ELASTOMERIC STRIP SEAL, AS PER PLAN	84			2/7
516	13600	2	SF	1" PREFORMED EXPANSION JOINT FILLER		2		
516	31010	84	FT	2" DEEP JOINT SEALER	84			
516	45305	10	EACH	REFURBISH BEARING DEVICES, AS PER PLAN	10			2/7
516	47001	LUMP	LS	JACKING AND TEMPORARY SUPPORT OF SUPERSTRUCTURE, AS PER PLAN	LUMP			2/7
526	10000	120	SY	REINFORCED CONCRETE APPROACH SLAB (T = 12")		120		
526	90010	84	FT	TYPE A INSTALLATION		84		
897	01010	755	SY	PAVEMENT PLANING, ASPHALT CONCRETE, CLASS A			755	

ESTIMATED QUANTITIES
 BRIDGE NO. HIG-50-1735
 OVER CLEAR CREEK



DESIGNER	JGM
REVIEWER	JWE 01/14/22
PROJECT ID	100502
SUBSET	TOTAL
3	7
SHEET	TOTAL
P.156	172