

RE-MICROFILMED
APR 14 1986

HIGHWAY
AUG 12 1967

FED. RD. DIVISION	STATE	PROJECT	
2	OHIO	STATE	1 173

HOCKING COUNTY
HOC-33-9.50

STATE OF OHIO
DEPARTMENT OF HIGHWAYS
GRADE ELIMINATION WITH THE CHESAPEAKE & OHIO RAILWAY CO.

HOC-33-9.50

HOCKING COUNTY FALLS TOWNSHIP CITY OF LOGAN

LIMITED ACCESS

This improvement is especially designed for through traffic and has been declared a limited access highway or freeway by action of the Director of Highways in accordance with the provisions of Section 5511.02 of the Revised Code of Ohio.

1965 SPECIFICATIONS

The standard specifications of the State of Ohio, Department of Highways, including changes and supplemental specifications listed in the proposal shall govern this improvement.

The right of way for this improvement will be provided by the State of Ohio.

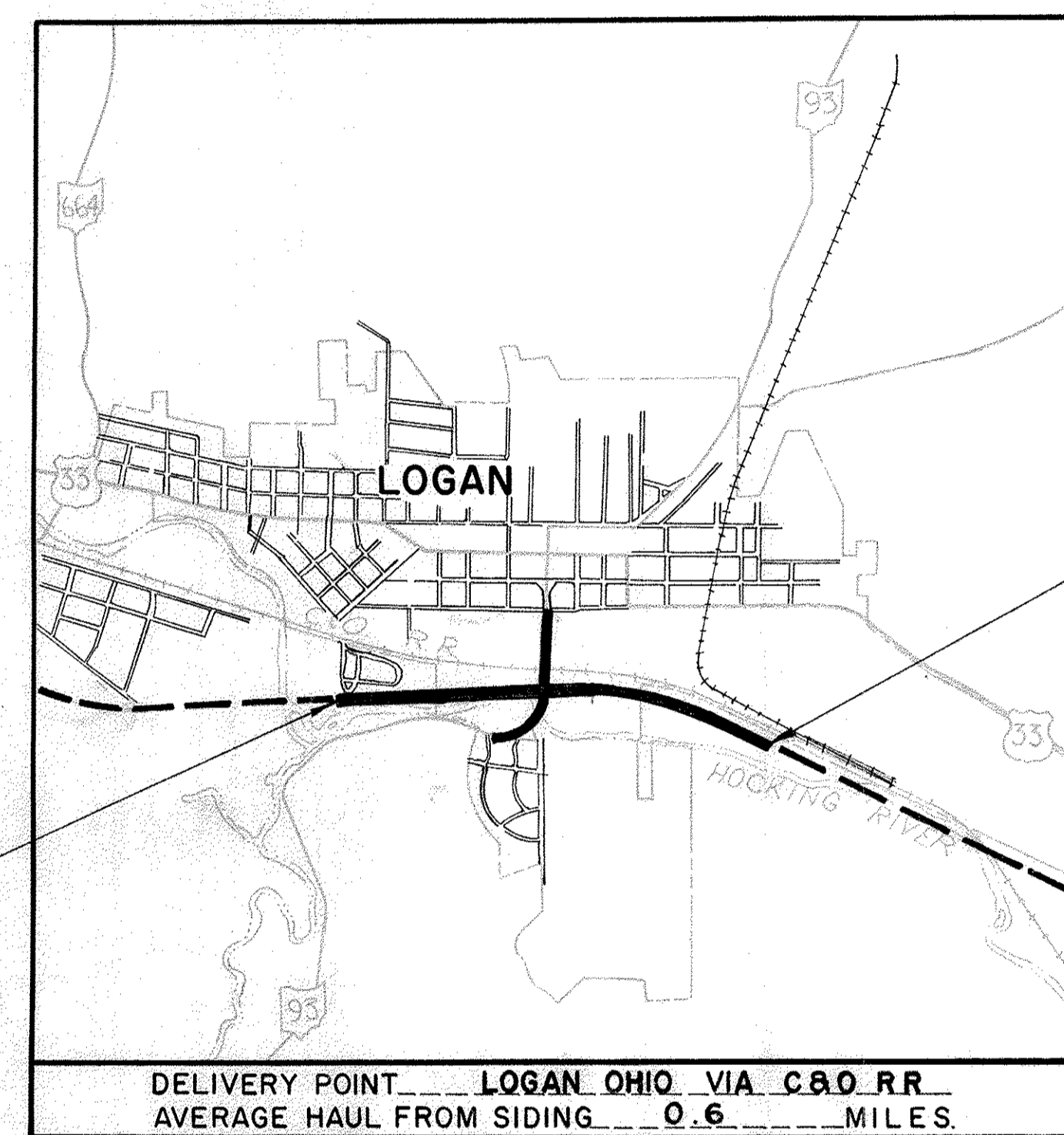
I hereby approve these plans and declare that the making of this improvement will not require the closing to traffic of the highway, and that provisions for maintenance and safety of traffic will be as set forth on the plans and estimates.

Approved: *John Dowler*
Date 8-9-66 Division Deputy Director
Approved: *A. H. Altwater*
Date 7-22-66 Engineer of Bridges
Approved: *R. N. Ricketts*
Date 2-30-66 Engineer of Location and Design
Approved: *R. E. Shultz*
Date 2-30-66 Deputy Director of Design and Construction
Approved: *T. H. Board*
Date 10-18-66 Deputy Director of Right of Way
Approved: *F. W. Wilson*
Date 10-17-66 Deputy Director of Planning and Programming
Approved: _____
Date _____ First Assistant Director
Approved: *J. B. Marshall*
Date 10/12/66 Director of Highways

END PROJECT
Sta. 324+00

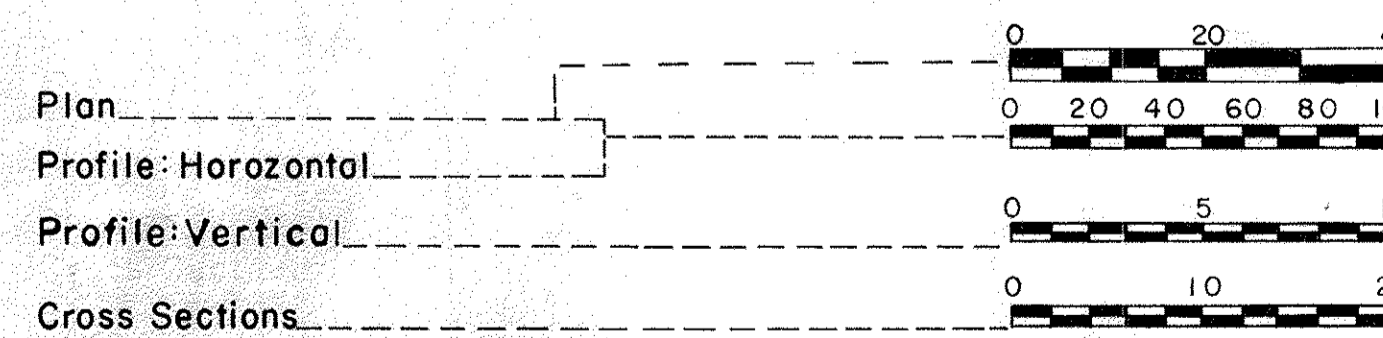
DESIGN DESIGNATION	
1960 A.D.T.	= 5,260
1980 A.D.T.	= 10,520
D.H.V.	= 1,580
D. (directional distr.)	= 66%
T. (Percent B & C Trucks)	= 10%
V. (Design Speed)	= 70 M.P.H.

PLAN PREPARED BY
LOUIS BERGER & ASSOC.
CONSULTING ENGINEERS
COLUMBUS, OHIO
ORANGE, N.J. HARRISBURG, PENNA.
FOR THE
STATE OF OHIO



BEGIN PROJECT
Sta. 271+00

Portion to be improved under this contract _____
Portion to be improved under other contracts _____
State and Federal Roads _____



CONVENTIONAL SIGNS

County Line	-----
Township Line	-----
Center Line	-----
Corporation Line	-----
Fence Line	x x x x x x x
Property Line	-----
Right of Way Limited Access	----- L.A. & R.W. -----
Right of Way without Limited Access	----- R.W. -----
Existing Right of Way	----- EXISTING R.W. -----
Limited Access Only	----- L.A. -----
Guard Rail (proposed)	-----
Power Poles	o o o o
Telephone Poles	o o o o
Trees or Stumps (existing)	o o o o
Existing Guard Rail	-----
Railroad	-----

INDEX OF SHEETS

Title Sheet	1	Sheet No. 140 revised 6-28-67 EBL
Location Plan	2	
Typical Sections	3-10	
General Notes	11	
Calculations	12	
Sub Summary	13	
General Summary	14-17	
Special Details	18-20	
Main Line Plan & Profile	21-27	
Main Line Cross Sections	28-49	
S.R. 93 Interchange	50-102	
Bowen St.	63-64	
Bowen Alley	63-64	
Walshonding Rd.	65	
Frontage Rd & Temporary Runaround	103-104	
Hocking River	105-113	
Structures 20' Span & Under	114-118	
Structures Over 20' Span	119-144	
Utilities	145-154	
Sanitary Sewer	145-146	
Storm Sewer	147	
Water	148-149	
Lighting	150	
Telephone	151-154	
Signing	155-159	
Right of Way	160-173	

LINE DATA

BEGIN PROJECT	STA. 271+00	
END PROJECT	STA. 324+00	
NET LENGTH OF PROJECT		5,300 LIN. FT. or 1.003 MILES
WEST APPROACH	STA. 270+00 TO STA. 271+00	100 LIN. FT.
EAST APPROACH	STA. 324+00 TO STA. 325+00	100 LIN. FT.
SR-93	STA. 10+05 TO STA. 30+00	1995 LIN. FT.
NET LENGTH OF WORK		7,495.00 LIN. FT. or 1.419 MILES

Supplemental Prints of Standard Construction Drawings

BP-1	6-1-65	CB-3	6-1-65	HL-2	11-1-65	L-1	6-1-65	MH-1	6-1-65	AS-1-54	8-10-65
BP-2	6-1-65	CB-3A	6-1-65	HL-3	11-1-65			MH-2	6-1-65		
BP-3	6-1-65	CB-6	6-1-65	HL-4	1-1-66			MH-1A	8-1-66	BR-1-65 Sht. 2	11-24-65
BP-4	6-1-65	CB-8	6-1-65			MC-1	6-1-65				
BP-5	6-1-65			HW-1	6-1-65	MC-2	6-1-65			FSB-1-62	1-15-63
BP-6	6-1-65	GR-1	6-1-65	HW-E	6-1-65	MC-3	5-1-66				
BP-7	1-1-66	GR-2A	9-1-65			MC-4	6-1-65			SD-1-65	11-8-65
		GR-6	6-1-65	I-2	6-1-65	MC-6	6-1-65			SP-53	6-30-61
CB-2-2-A	6-1-65			I-2A	6-1-65						
CB-2-3	2-4-6-1-65	HL-1	11-1-65								

Supplemental Specifications

801	9-2-65	816	8-6-65
806	3-3-66		
808	2-7-66	825	4-22-65
811	3-29-65	828	3-21-66
814	3-16-66	1001	3-21-66
815	8-6-65		

FILE NO. HOCKING COUNTY HOC-33-9.50
Date of Letting _____ 196____
Contract No. _____

F. Heywood Marsh
CHIEF ENGINEER
June 16, 1966

MICROFILMED
APR 14 1986

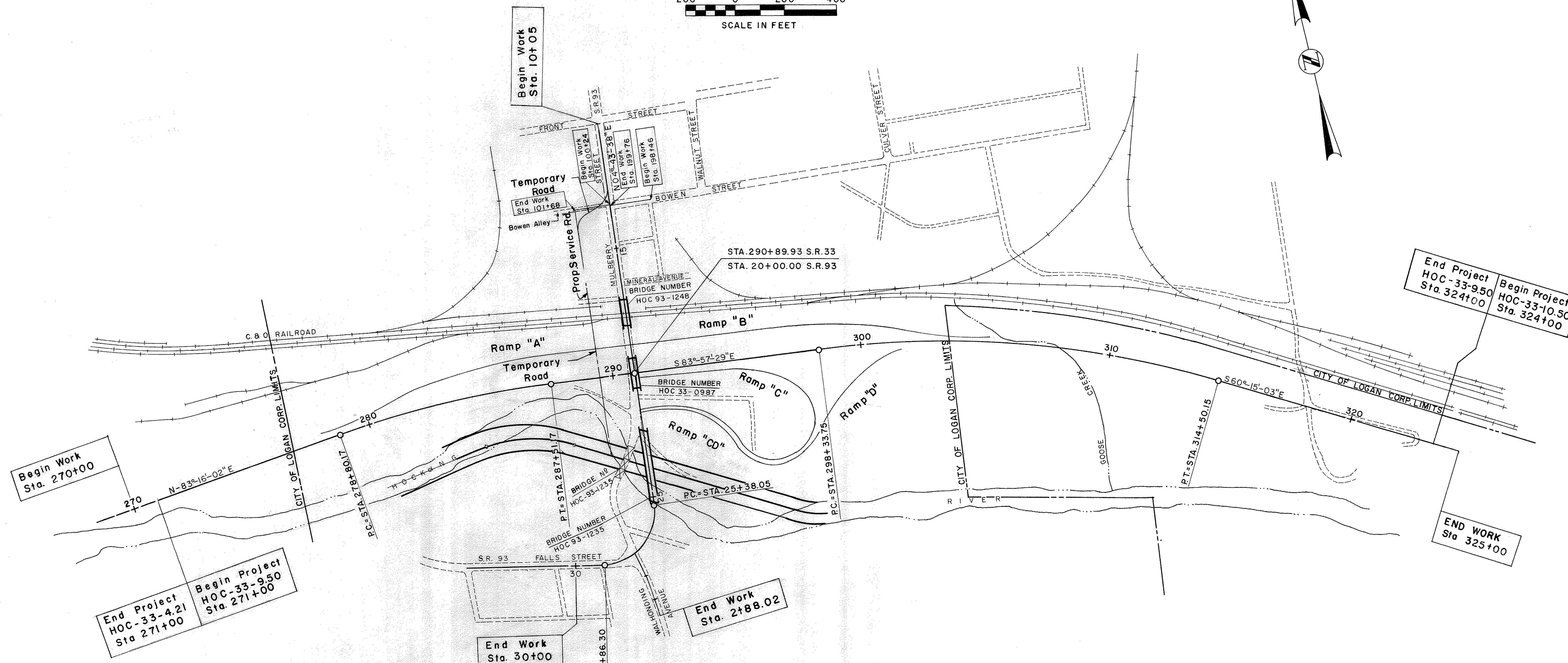
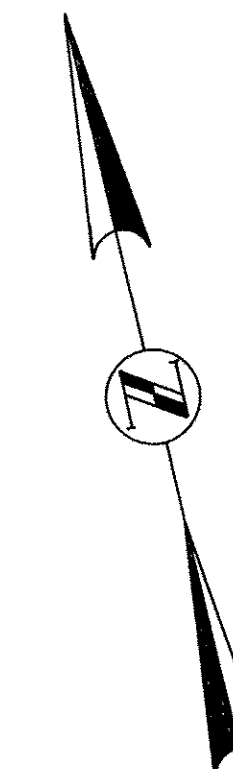
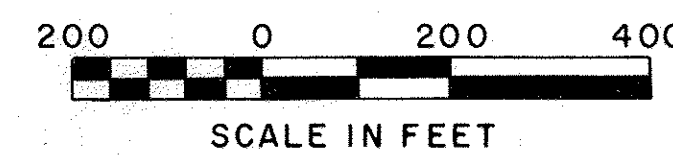
LOCATION PLAN

FALLS TOWNSHIP & CITY OF LOGAN

FED. RD. DIVISION	STATE	PROJECT
2	OHIO	

2
173

HOCKING COUNTY
HOC-33-9.50



S.R. 93
CURVE DATA

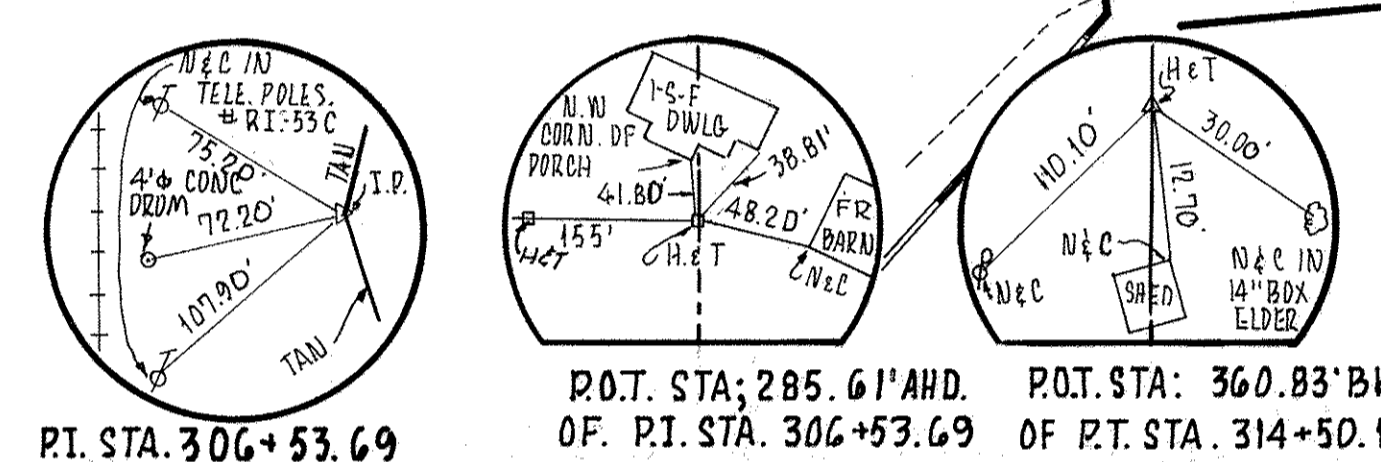
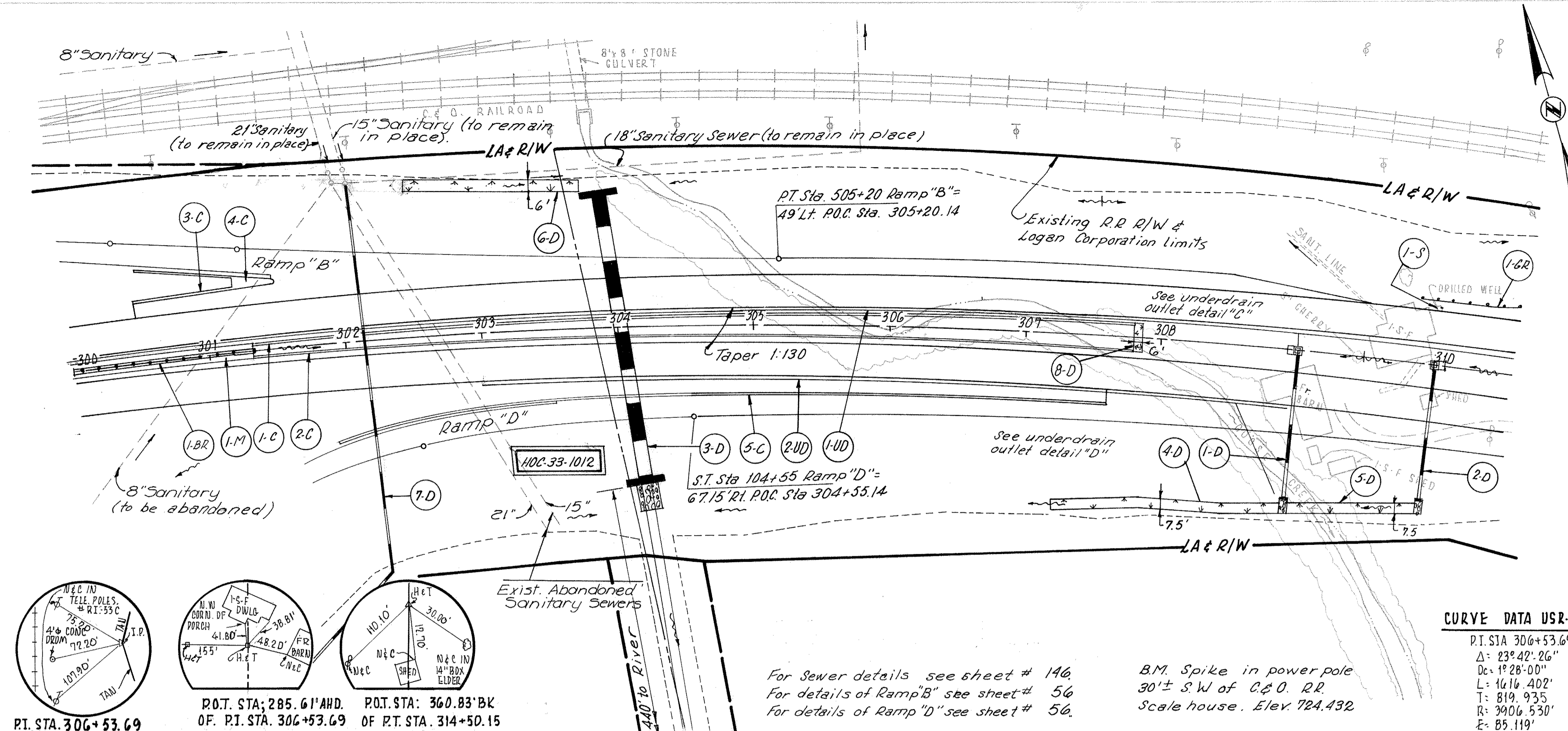
PI = STA. 27+71.42
Δ = 97°-30'-36"
Dc = 28°-00'-00"
Lc = 348.25'
T = 233.375'
E = 105.753'
R = 204.628'

M
CURVE DATA

PI = STA. 306+53.69
Δ = 23°-42'-26"
Dc = 1°-28'-00"
Lc = 1616.40'
T = 819.935'
E = 85.12'
R = 3906.53'

LEGEND

PROPOSED	—————
EXISTING	- - - - -
PREVIOUS PROJECT	—————
DEAD END ROAD	—●—
PROPOSED BRIDGES	▬▬▬

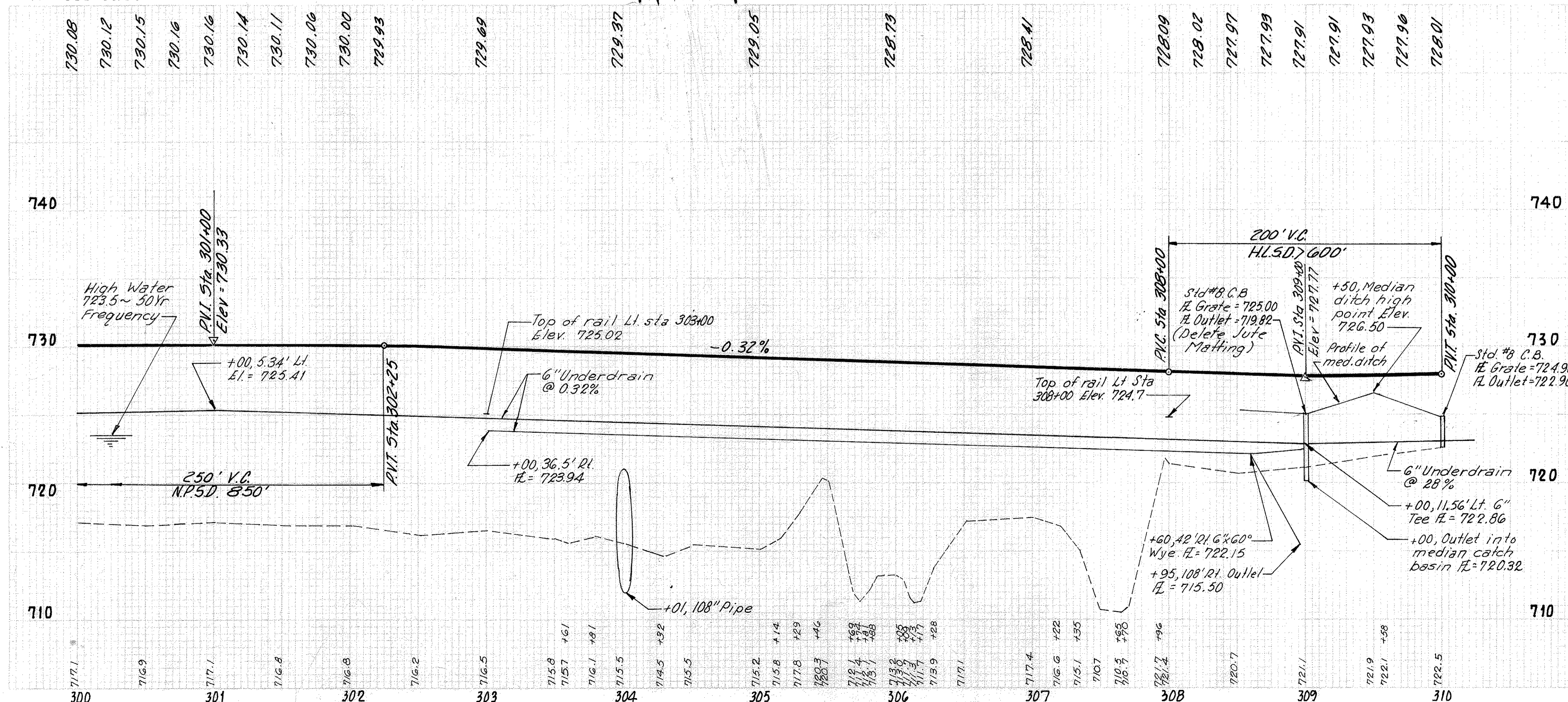


For Sewer details see sheet # 146.
For details of Ramp "B" see sheet # 56.
For details of Ramp "D" see sheet # 56.

B.M. Spike in power pole
30'± S.W. of C.&O. RR
Scale house. Elev. 724.432

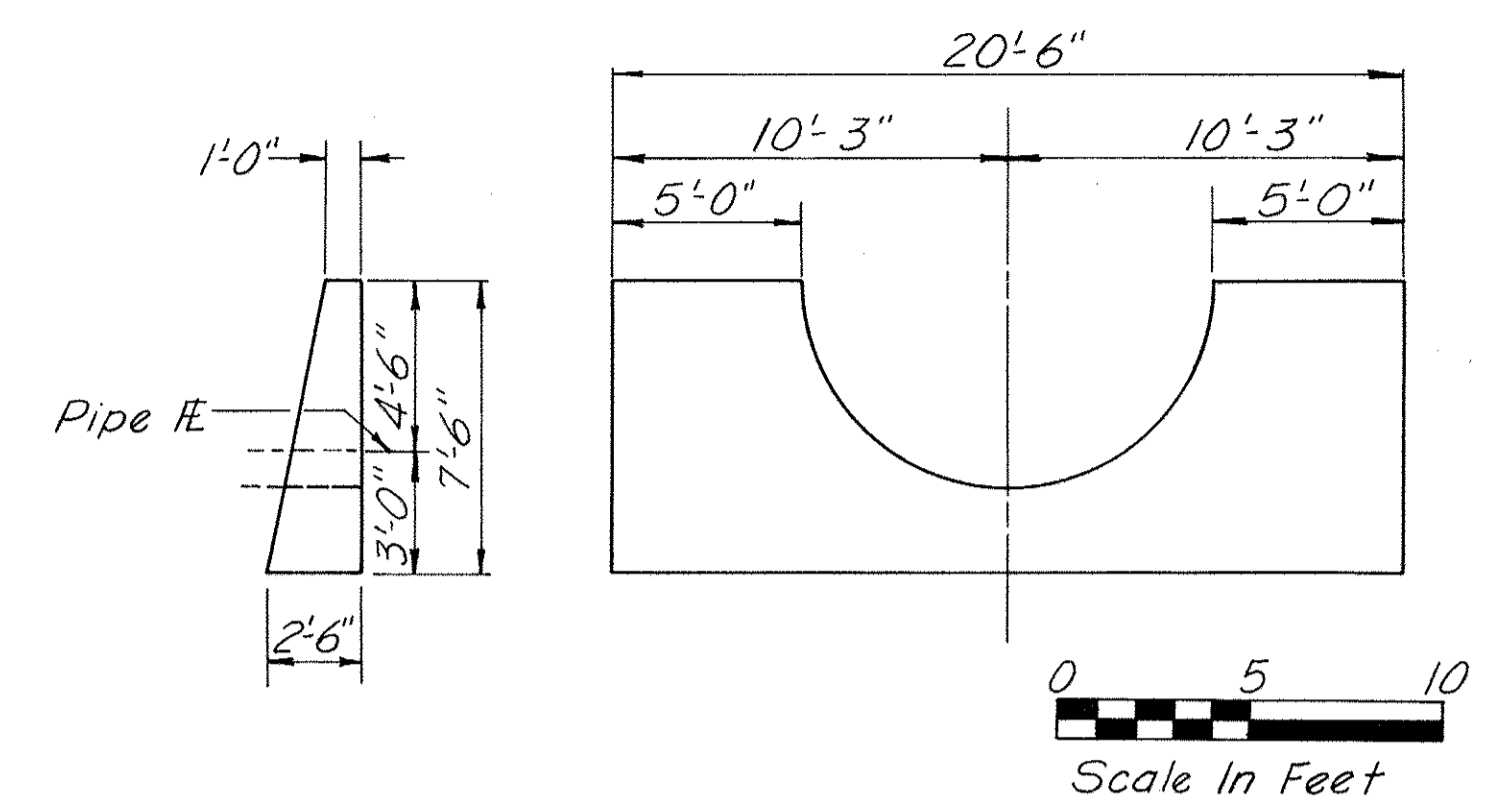
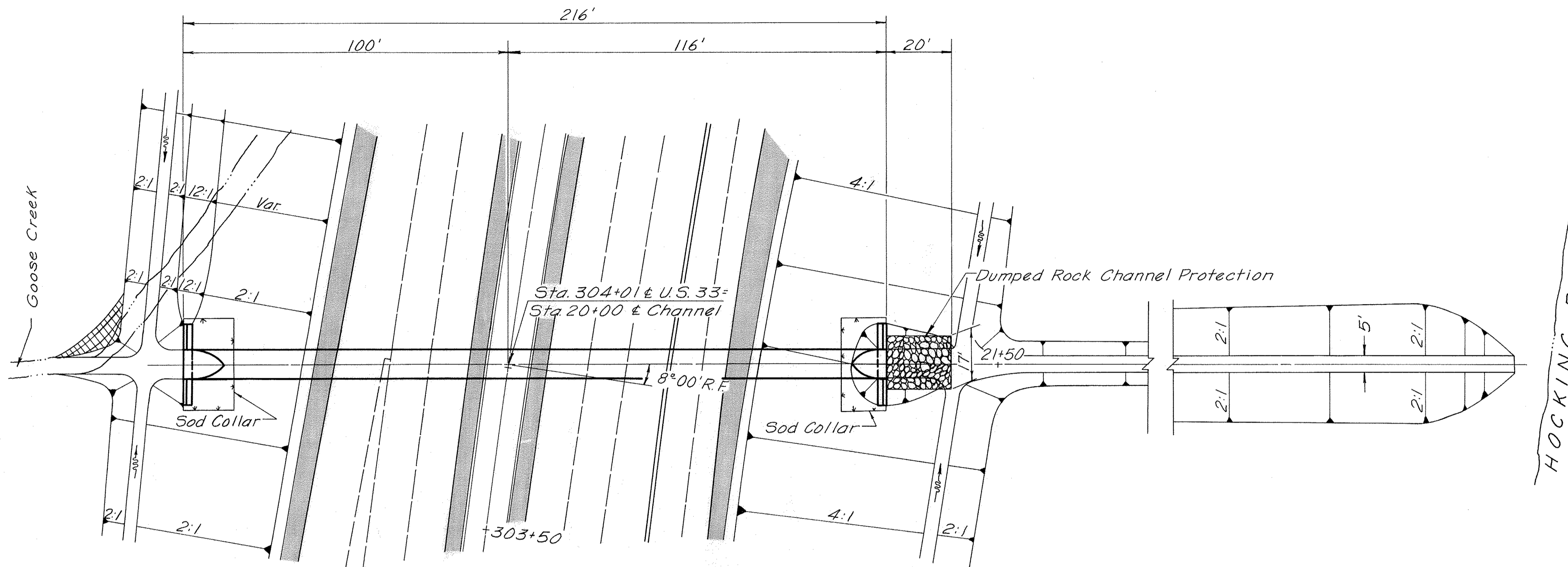
CURVE DATA USR-33

P.T. STA 306+53.69
 $\Delta = 23^\circ 42' 26''$
 $D_c = 1^\circ 28' 00''$
 $L = 1616.402'$
 $T = 819.935'$
 $R = 3906.530'$
 $E = 85.119'$



REF. NO.	STATION TO STATION	SIDE	ESTIMATED QUANTITIES
1-D	309+00 to 310+00	Rt	603 Concrete 6" Cond. (P. Cond. 108 Cond.) 100' 0.2
2-D	310+00 to 310+00	Rt	603 Masonry 18" Type B, Type A, Cond. 100' 0.2
3-D	310+00 to 310+00	Lt	603 Masonry 18" Type B, Type A, Cond. 100' 0.2
4-D	307+25 to 308+98	Rt	603 Masonry 18" Type B, Type A, Cond. 100' 0.2
5-D	309+02 to 309+98	Rt	603 Masonry 18" Type B, Type A, Cond. 100' 0.2
6-D	See Ramp "B"		603 Masonry 18" Type B, Type A, Cond. 100' 0.2
7-D	See Sanitary Sewer Detail for Quantities		603 Masonry 18" Type B, Type A, Cond. 100' 0.2
8-D	307+80 to 307+86	Lt	603 Masonry 18" Type B, Type A, Cond. 100' 0.2
1-C	301+30 to 307+80	Lt	606 Special 604 100' 1
2-C	301+30 to 307+80	Rt	606 Special 604 100' 1
3-C	300+50 to 301+21	Lt	606 Special 604 100' 1
4-C	301+21 to 301+50	Lt	606 Special 604 100' 1
5-C	304+55 to 307+55	Rt	606 Special 604 100' 1
1-UD	300+00 to 310+00	Lt	609 300' 300
2-UD	303+00 to 308+95	Rt	609 300' 300
1-S	310+00	Lt	609 300' 300
1-M	300+00 to 301+30	±	609 300' 300
1-BR	300+00 to 301+31.27	±	609 300' 300
1-CR	309+87 to 311+62	Lt	609 300' 300
TOTALS			

HOC-33-9.50
HOCKING COUNTY



ENDWALL DETAIL

Drainage Area = 496 acres
 $Q_5 = 346$ cfs
 $Q_{25} = 462$ cfs

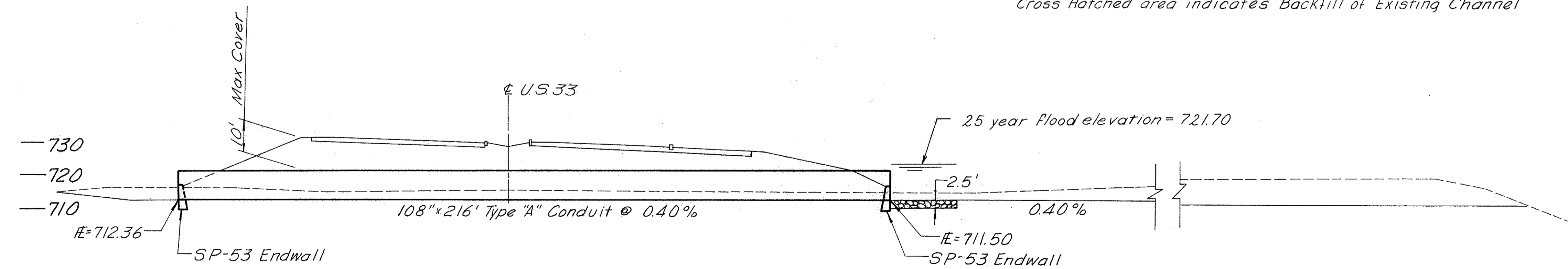
ESTIMATED QUANTITIES

203	Excavation not including embankment construction	1791	Cu. Yds.
601	Dumped Rock Channel Protection	32	Cu. Yds.
602	Concrete Masonry	13.7	Cu. Yds.
603	108" Conduit, Type "A", 706.02 CLIII, Class "B" Bedding	216	Lin. Ft.
660	Sodding	80	Sq. Yds.
203	Embankment	1	Cu. Yds.

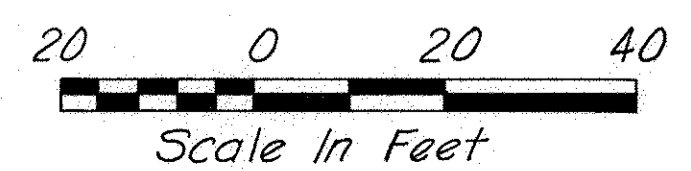
NOTES
 Shaded area indicates Paved Berm
 Cross Hatched area indicates Backfill of Existing Channel

CHANNEL CROSS SECTIONS

Station	End Area	Volume
Sta. 25+82	0	85
70973 25+60 7190	209	477
70997 25+00 7191	220	649
71037 24+00 7170	130	321
71077 23+00 7140	43	178
71117 22+00 715.0	53	71
71134 21+57 7145	36	10
Sta 21+42	0	
Total		1791



SECTION



Struct. No. HOC-33-1012