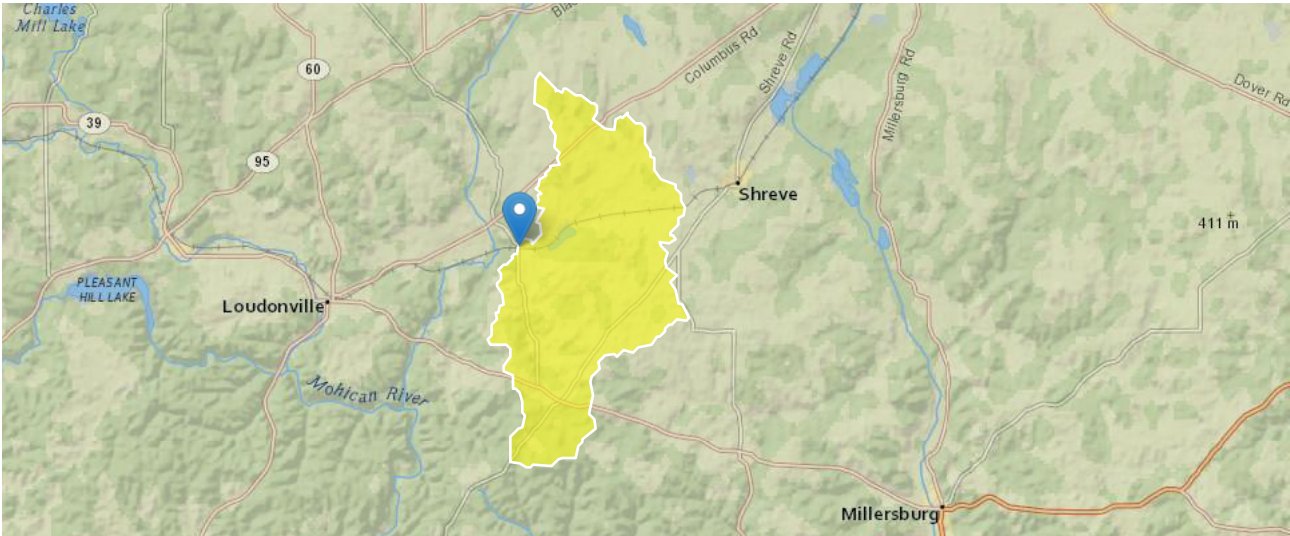


StreamStats Report

Region ID: OH
Workspace ID: OH20230118133233009000
Clicked Point (Latitude, Longitude): 40.65715, -82.13536
Time: 2023-01-18 08:32:54 -0500



+ Collapse All

> Basin Characteristics

Parameter Code	Parameter Description	Value	Unit
CSL1085LFP	Change in elevation divided by length between points 10 and 85 percent of distance along the longest flow path to the basin divide, LFP from 2D grid	18.8	feet per mi
DRNAREA	Area that drains to a point on a stream	31.3	square miles
FOREST	Percentage of area covered by forest	25	percent
LAT_CENT	Latitude of Basin Centroid	40.6461	decimal degrees
LC92STOR	Percentage of water bodies and wetlands determined from the NLCD	1.26	percent
OHREGA	Ohio Region A Indicator	1	dimensionless
OHREGC	Ohio Region C Indicator	0	dimensionless
PRECIPCENT	Mean Annual Precip at Basin Centroid	37.3	inches

Parameter Code	Parameter Description	Value	Unit
STREAM_VARG	Streamflow variability index as defined in WRIR 02-4068, computed from regional grid	0.54	dimensionless

Monthly Flow Statistics

Monthly Flow Statistics Parameters [Low Flow LatLE 41.2 wri02 4068]

Parameter Code	Parameter Name	Value	Units	Min Limit	Max Limit
DRNAREA	Drainage Area	31.3	square miles	0.12	7422
LC92STOR	Percent Storage from NLCD1992	1.26	percent	0	19
PRECIPCENT	Mean Annual Precip at Basin Centroid	37.3	inches	34	43.2
FOREST	Percent Forest	25	percent	0	99.1
LAT_CENT	Latitude of Basin Centroid	40.6461	decimal degrees	38.68	41.2
STREAM_VARG	Streamflow Variability Index from Grid	0.54	dimensionless	0.25	1.13

Monthly Flow Statistics Flow Report [Low Flow LatLE 41.2 wri02 4068]

PIl: Prediction Interval-Lower, PIu: Prediction Interval-Upper, ASEp: Average Standard Error of Prediction, SE: Standard Error (other -- see report)

Statistic	Value	Unit	SE	ASEp
January Mean Flow	45.6	ft^3/s	16.6	16.6
February Mean Flow	52.3	ft^3/s	11.9	11.9
March Mean Flow	61.8	ft^3/s	14	14
April Mean Flow	54.2	ft^3/s	11.2	11.2
May Mean Flow	34.6	ft^3/s	19.5	19.5
June Mean Flow	23.5	ft^3/s	27	27
July Mean Flow	14.7	ft^3/s	28.2	28.2
August Mean Flow	9.92	ft^3/s	36.8	36.8
September Mean Flow	6.75	ft^3/s	43.6	43.6
October Mean Flow	7.19	ft^3/s	50.8	50.8
November Mean Flow	16.2	ft^3/s	37.5	37.5
December Mean Flow	32.3	ft^3/s	21.8	21.8

Monthly Flow Statistics Citations

Koltun, G. F., and Whitehead, M. T.,2002, Techniques for Estimating Selected Streamflow Characteristics of Rural, Unregulated Streams in Ohio: U. S. Geological Survey Water-Resources Investigations Report 02-4068, 50 p (<https://pubs.er.usgs.gov/publication/wri024068>)

➤ Peak-Flow Statistics

Peak-Flow Statistics Parameters [Peak Flow Full Model Reg A SIR2019 5018]

Parameter Code	Parameter Name	Value	Units	Min Limit	Max Limit
DRNAREA	Drainage Area	31.3	square miles	0.04	5989
OHREGC	Ohio Region C Indicator 1 if in C else 0	0	dimensionless	0	1
OHREGA	Ohio Region A Indicator 1 if in A else 0	1	dimensionless	0	1
CSL1085LFP	Stream Slope 10 and 85 Longest Flow Path	18.8	feet per mi	1.53	516
LC92STOR	Percent Storage from NLCD1992	1.26	percent	0	25.35

Peak-Flow Statistics Flow Report [Peak Flow Full Model Reg A SIR2019 5018]

PII: Prediction Interval-Lower, Plu: Prediction Interval-Upper, ASEp: Average Standard Error of Prediction, SE: Standard Error (other -- see report)

Statistic	Value	Unit	PII	Plu	ASEp
50-percent AEP flood	1330	ft ³ /s	705	2510	40.1
20-percent AEP flood	2150	ft ³ /s	1190	3880	37.2
10-percent AEP flood	2780	ft ³ /s	1530	5040	37.6
4-percent AEP flood	3670	ft ³ /s	2010	6700	38.1
2-percent AEP flood	4390	ft ³ /s	2380	8100	37.8
1-percent AEP flood	5140	ft ³ /s	2760	9580	39.6
0.2-percent AEP flood	7080	ft ³ /s	3770	13300	40.3

Peak-Flow Statistics Citations

Koltun, G.F.,2019, Flood-frequency estimates for Ohio streamgages based on data through water year 2015 and techniques for estimating flood-frequency characteristics of rural, unregulated Ohio streams: U.S. Geological Survey Scientific Investigations Report 2019–5018, 25 p. (<https://dx.doi.org/10.3133/sir20195018>)

➤ Annual Flow Statistics

Annual Flow Statistics Parameters [Low Flow LatLE 41.2 wri02 4068]

Parameter Code	Parameter Name	Value	Units	Min Limit	Max Limit
DRNAREA	Drainage Area	31.3	square miles	0.12	7422
LAT_CENT	Latitude of Basin Centroid	40.6461	decimal degrees	38.68	41.2
PRECIPCENT	Mean Annual Precip at Basin Centroid	37.3	inches	34	43.2

Annual Flow Statistics Flow Report [Low Flow LatLE 41.2 wri02 4068]

PII: Prediction Interval-Lower, Plu: Prediction Interval-Upper, ASEp: Average Standard Error of Prediction, SE: Standard Error (other -- see report)

Statistic	Value	Unit	SE	ASEp
Mean Annual Flow	32.7	ft^3/s	11.4	11.4
<i>Annual Flow Statistics Citations</i>				
Koltun, G. F., and Whitehead, M. T.,2002, Techniques for Estimating Selected Streamflow Characteristics of Rural, Unregulated Streams in Ohio: U. S. Geological Survey Water-Resources Investigations Report 02-4068, 50 p (https://pubs.er.usgs.gov/publication/wri024068)				

➤ General Flow Statistics

General Flow Statistics Parameters [Low Flow LatLE 41.2 wri02 4068]

Parameter Code	Parameter Name	Value	Units	Min Limit	Max Limit
DRNAREA	Drainage Area	31.3	square miles	0.12	7422
LC92STOR	Percent Storage from NLCD1992	1.26	percent	0	19
STREAM_VARG	Streamflow Variability Index from Grid	0.54	dimensionless	0.25	1.13
LAT_CENT	Latitude of Basin Centroid	40.6461	decimal degrees	38.68	41.2

General Flow Statistics Flow Report [Low Flow LatLE 41.2 wri02 4068]

PII: Prediction Interval-Lower, PIu: Prediction Interval-Upper, ASEp: Average Standard Error of Prediction, SE: Standard Error (other -- see report)

Statistic	Value	Unit	SE	ASEp
Harmonic Mean Streamflow	4.3	ft^3/s	65.9	65.9

General Flow Statistics Citations

Koltun, G. F., and Whitehead, M. T.,2002, Techniques for Estimating Selected Streamflow Characteristics of Rural, Unregulated Streams in Ohio: U. S. Geological Survey Water-Resources Investigations Report 02-4068, 50 p (<https://pubs.er.usgs.gov/publication/wri024068>)

USGS Data Disclaimer: Unless otherwise stated, all data, metadata and related materials are considered to satisfy the quality standards relative to the purpose for which the data were collected. Although these data and associated metadata have been reviewed for accuracy and completeness and approved for release by the U.S. Geological Survey (USGS), no warranty expressed or implied is made regarding the display or utility of the data for other purposes, nor on all computer systems, nor shall the act of distribution constitute any such warranty.

USGS Software Disclaimer: This software has been approved for release by the U.S. Geological Survey (USGS). Although the software has been subjected to rigorous review, the USGS reserves the right to update the software as needed pursuant to further analysis and review. No warranty, expressed or implied, is made by the USGS or the U.S. Government as to the functionality of the software and related material nor shall the fact of release constitute any such warranty. Furthermore, the software is released on condition that neither the USGS nor the U.S. Government shall be held liable for any damages resulting from its authorized or unauthorized use.

USGS Product Names Disclaimer: Any use of trade, firm, or product names is for descriptive purposes only and does not imply endorsement by the U.S. Government.

Application Version: 4.12.0

StreamStats Services Version: 1.2.22

NSS Services Version: 2.2.1