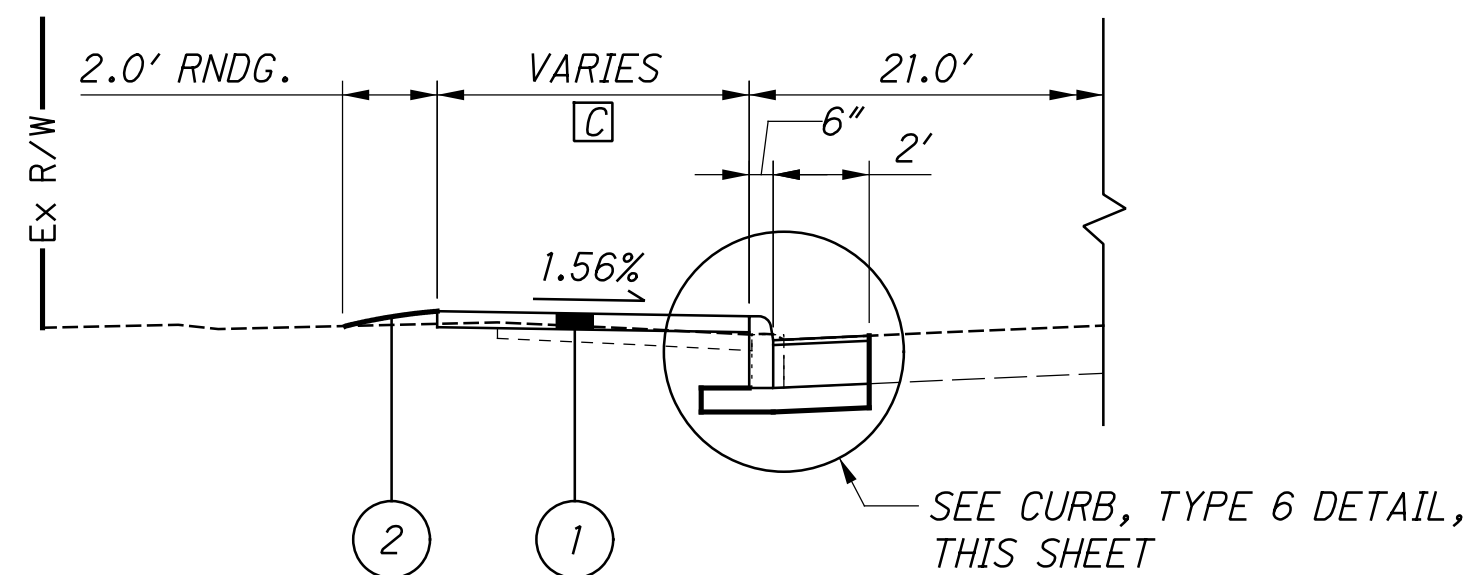


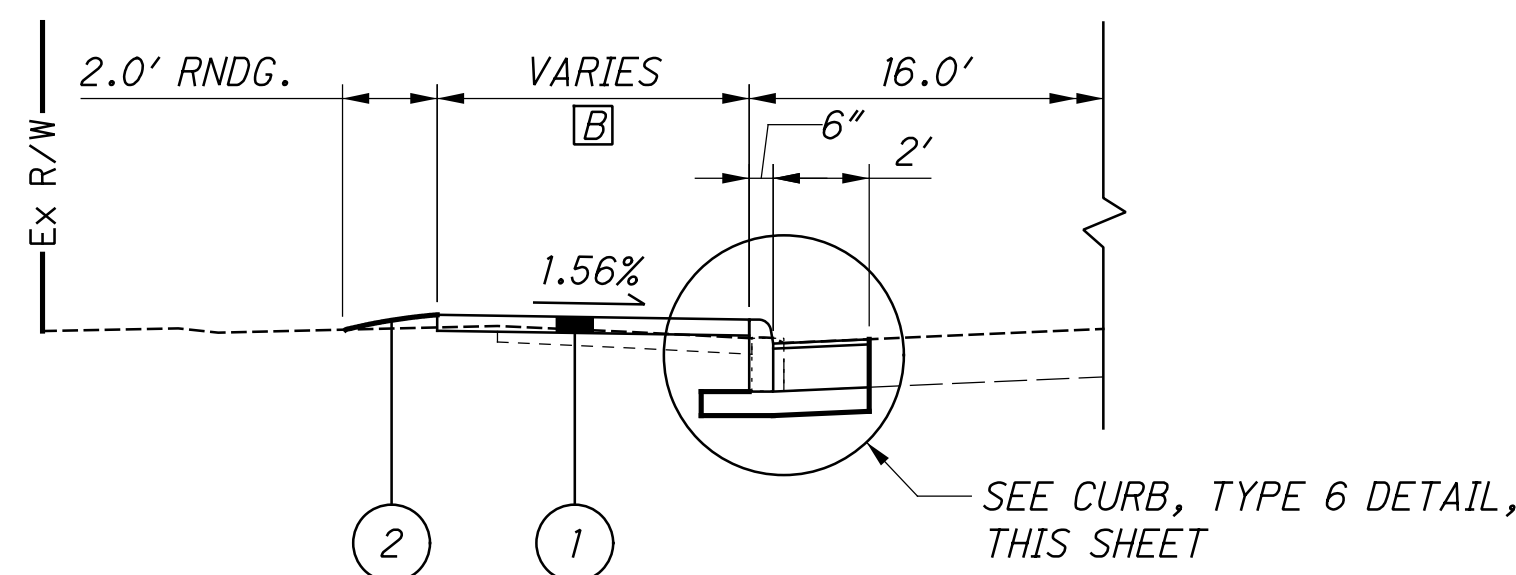
CURB, TYPE 6 PAVEMENT DETAIL
NOT TO SCALE
(MIRROR FOR OPPOSITE SIDE)



PARTIAL SECTION - S.R. 241

LEFT: STA. 480+22.00 TO STA. 480+66.53

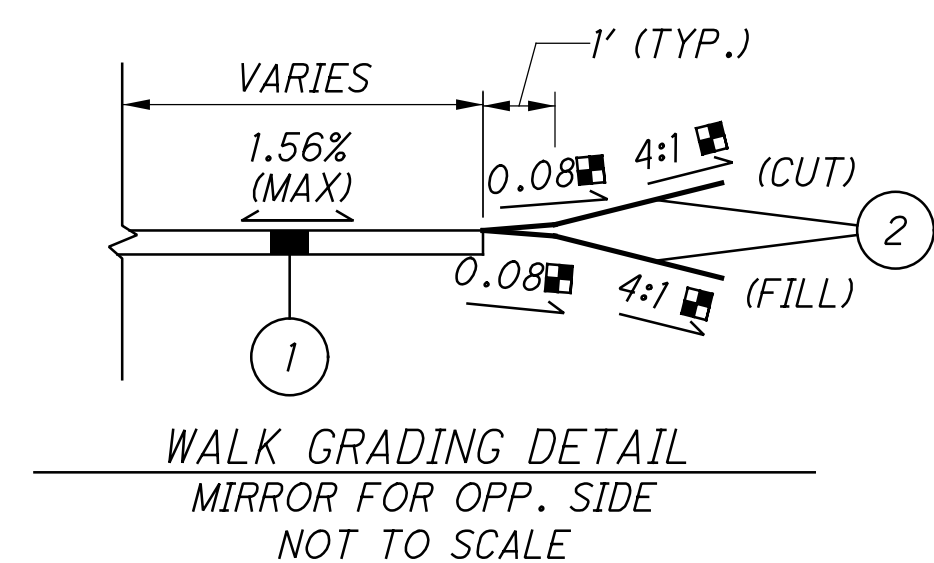
C - 6.5' FROM STA. 480+22.00 TO STA. 480+50.00
- VARIES TO MATCH EX. FROM STA. 480+50.00 TO STA. 480+66.53



PARTIAL SECTION - S.R. 241

LEFT: STA. 476+02.89 TO STA. 477+11.00

B - 6.5' FROM STA. 476+02.89 TO STA. 476+80.39
- 11.5' FROM STA. 476+80.39 TO STA. 477+11.00



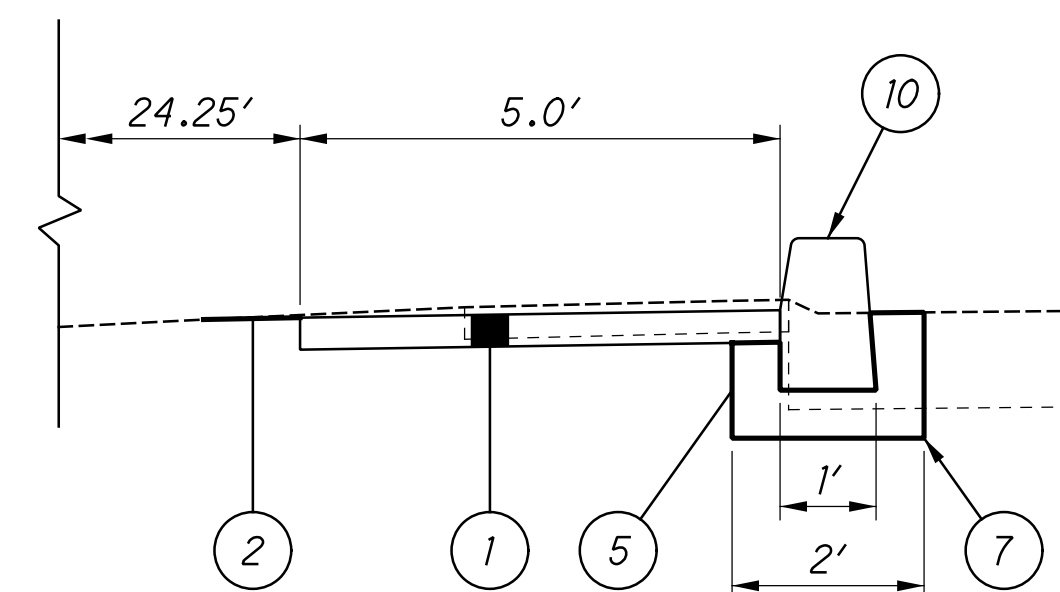
■ - OR AS SHOWN ON THE CROSS SECTIONS

LEGEND

- 1 ITEM 608 - 4" CONCRETE WALK
- 2 ITEM 659 - SEEDING AND MULCHING
- 3 ITEM 441 - 1 1/4" ASPHALT CONCRETE SURFACE COURSE, TYPE 1, (449), PG64-22
- 4 ITEM 301 - 10 3/4" ASPHALT CONCRETE BASE, PG64-22, (449)
- 5 ITEM 304 - 6" AGGREGATE BASE
- 6 ITEM 407 - NON-TRACKING TACK COAT
- 7 ITEM 204 - SUBGRADE COMPACTION
- 8 ITEM 609 - CURB, TYPE 6
- 9 ITEM 609 - COMBINATION CURB AND GUTTER, TYPE 2
- 10 ITEM 609 - CURB, TYPE 8

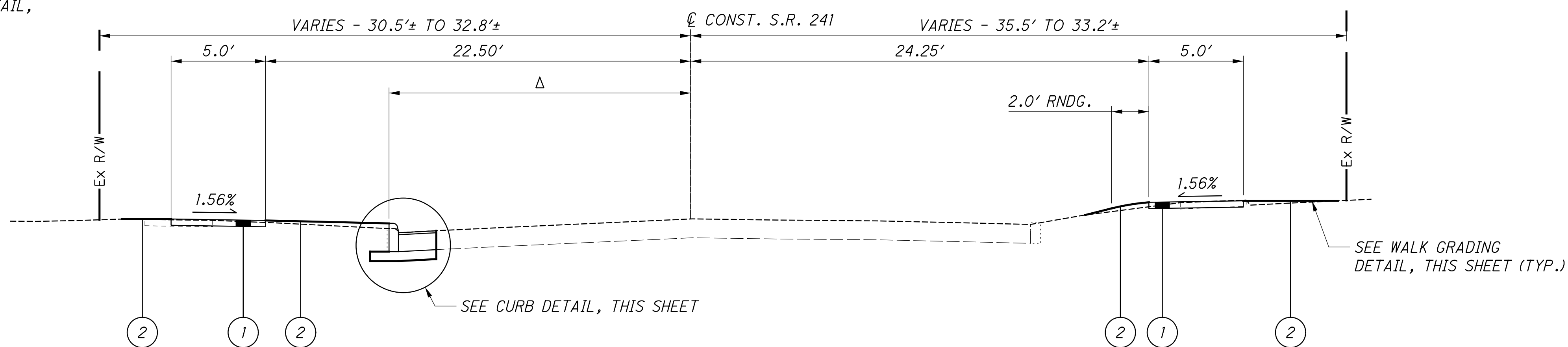
NOTE:

1. SAWCUT THE EXISTING PAVEMENT TO PROVIDE A NEAT JOINT PER 202.05 OF THE CMS. PAYMENT FOR THIS WORK SHALL BE INCLUDED WITH ITEM 202 - PAVEMENT REMOVED.



PARTIAL SECTION - S.R. 241

RIGHT: STA. 478+28.50 TO STA. 478+97.00

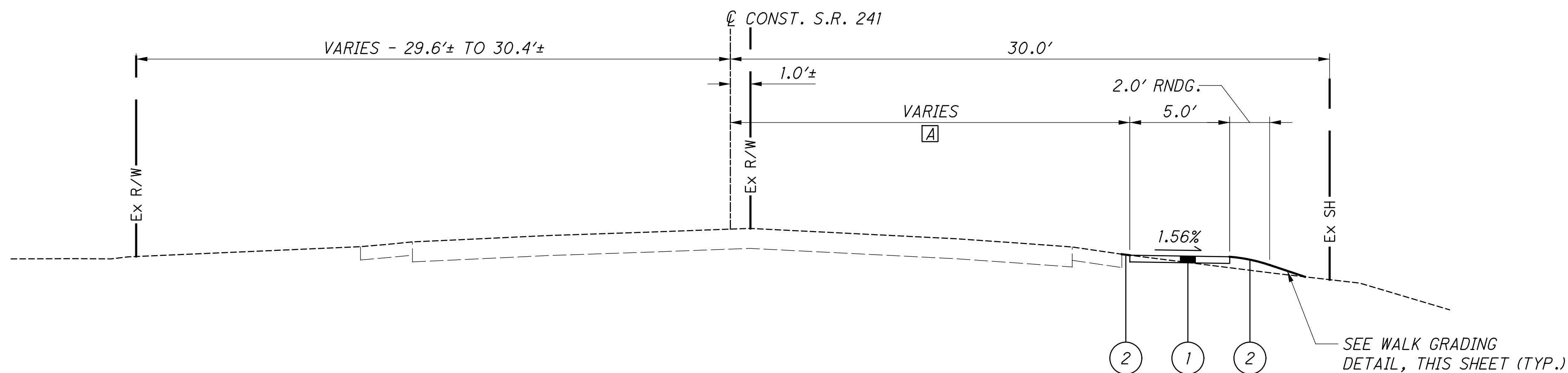


TYPICAL SECTION - S.R. 241

LEFT: STA. 477+11.00 TO STA. 480+22.00
RIGHT: STA. 475+79.12 TO STA. 478+28.50
STA. 478+97.00 TO STA. 482+74.27

Δ - BACK OF CURB, LT., APPLIES:

- VARIES FROM 16.0' AT STA. 477+00.00 TO MATCH EX. AT STA. 477+21.00
- VARIES FROM 18.8' AT STA. 480+12.20 TO 21.0' AT STA. 480+22.00
- VARIES FROM 21.0' AT STA. 480+66.53 TO MATCH EX. AT STA. 480+76.53



TYPICAL SECTION - S.R. 241

STA. 473+16.00 TO STA. 475+36.41

A - 20.0' FROM STA. 473+16.00 TO STA. 474+75.00
- VARIES FROM STA. 474+75.00 TO STA. 475+00.00
- 23.0' FROM STA. 475+00.00 TO STA. 475+32.24

UTILITIES

LISTED BELOW ARE ALL UTILITIES LOCATED WITHIN THE PROJECT CONSTRUCTION LIMITS TOGETHER WITH THEIR RESPECTIVE OWNERS:

AEP OHIO POWER COMPANY
ATTN: CLARKE SAUNDERS
777 HOPEWELL DRIVE
HEATH, OHIO 43056
614-460-4794
CMSAUNDERS@AEP.COM

NORTHEAST OHIO NATURAL GAS
ATTN: MARK WETZEL
9081 STATE ROUTE 250
STRASBURG, OHIO 44680
300-878-5589
MWETZEL@EGAS.NET

ASPIRE ENERGY
ATTN: BENJAMIN HARVEY
300 TRACY BRIDGE ROAD
ORRVILLE, OHIO 44667
330-682-1636
BHARVEY@CHPK.COM

BERLIN WATER COMPANY
ATTN: SETH CLARK
P.O. BOX 402
BERLIN, OHIO 44610
330-231-2120
76SSETHCLARK@GMAIL.COM

MASSILLON CABLE TV
ATTN: JEFF CAMPBELL
814 CABLE CT. NW
MASSILLON, OHIO 44648
330-833-0202
JCAMPBELL@MCTVOHIO.COM

LUMEN
ATTN: JEFFREY SCHOONOVER
2025 AKRON ROAD
WOOSTER, OHIO 44691
330-262-1128
JEFFREY.L.SCHOONOVER@LUMEN.COM

THE LOCATION OF THE UNDERGROUND UTILITIES SHOWN ON THE PLANS ARE AS OBTAINED FROM THE OWNERS AS REQUIRED BY SECTION 153.64 O.R.C.

CONSTRUCTION NOISE

ACTIVITIES AND LAND USE ADJACENT TO THIS PROJECT MAY BE AFFECTED BY CONSTRUCTION NOISE. IN ORDER TO MINIMIZE ANY ADVERSE CONSTRUCTION NOISE IMPACTS, DO NOT OPERATE POWER-OPERATED CONSTRUCTION-TYPE DEVICES BETWEEN THE HOURS OF 7 PM AND 7 AM. IN ADDITION, DO NOT OPERATE AT ANY TIME ANY DEVICE IN SUCH A MANNER THAT THE NOISE CREATED SUBSTANTIALLY EXCEEDS THE NOISE CUSTOMARILY AND NECESSARILY ATTENDANT TO THE REASONABLE AND EFFICIENT PERFORMANCE OF SUCH EQUIPMENT.

WORK LIMITS

THE WORK LIMITS SHOWN ON THESE PLANS ARE FOR PHYSICAL CONSTRUCTION ONLY. PROVIDE THE INSTALLATION AND OPERATION OF ALL WORK ZONE TRAFFIC CONTROL AND WORK ZONE TRAFFIC CONTROL DEVICES REQUIRED BY THESE PLANS WHETHER INSIDE OR OUTSIDE THESE WORK LIMITS.

CLEARING AND GRUBBING

ALTHOUGH THERE ARE NO TREES OR STUMPS SPECIFICALLY MARKED FOR REMOVAL WITHIN THE LIMITS OF THE PROJECT, A LUMP SUM QUANTITY IS INCLUDED IN THE GENERAL SUMMARY FOR ITEM 201, CLEARING AND GRUBBING. ALL PROVISIONS AS SET FORTH IN THE SPECIFICATIONS UNDER THIS ITEM ARE INCLUDED IN THE LUMP SUM PRICE BID FOR ITEM 201, CLEARING AND GRUBBING.

ITEM 408 - PRIME COAT, AS PER PLAN

THE CONTRACTOR WILL APPLY "MC-70" AT A RATE OF 0.4 GALLONS PER SQUARE YARD, OR AS DETERMINED BY THE ENGINEER, TO THE COMPLETED AGGREGATE SHOULDER.



SURVEYING PARAMETERS

PRIMARY PROJECT CONTROL MONUMENTS GOVERN ALL POSITIONING ON ODOT PROJECTS. SEE THIS SHEET FOR A TABLE CONTAINING PROJECT CONTROL INFORMATION.

USE THE FOLLOWING PROJECT CONTROL, VERTICAL POSITIONING, AND HORIZONTAL POSITIONING PARAMETERS FOR ALL SURVEYING:

PROJECT CONTROL

POSITIONING METHOD: ODOT VRS
MONUMENT TYPE: TYPE B

VERTICAL POSITIONING

ORTHOMETRIC HEIGHT DATUM: NAVD 88
GEOID: GEOID 18

HORIZONTAL POSITIONING

REFERENCE FRAME: NAD 83 (2011)
ELLIPSOID: GRS 1980
MAP PROJECTION: LAMBERT CONFORMAL CONIC
COORDINATE SYSTEM: OHIO STATE PLANE, NORTH ZONE
COMBINED SCALE FACTOR: 1.00008710
ORIGIN OF COORDINATE SYSTEM: 0,0

USE THE POSITIONING METHODS AND MONUMENT TYPE USED IN THE ORIGINAL SURVEY TO RESTORE ALL MONUMENTS RELATED TO PRIMARY PROJECT CONTROL THAT ARE DAMAGED OR DESTROYED BY CONSTRUCTION ACTIVITIES. RESTORE THE DAMAGED OR DESTROYED MONUMENTS IN ACCORDANCE WITH CMS 623.

UNITS ARE IN U.S. SURVEY FEET

ITEM SPECIAL - MAILBOX SUPPORT SYSTEM, SINGLE

THIS WORK SHALL CONSIST OF FURNISHING AND ERECTING MAILBOX SUPPORTS AND ANY ASSOCIATED MOUNTING HARDWARE IN ACCORDANCE WITH PLAN DETAILS, AND ATTACHING AN OWNER-SUPPLIED MAILBOX AT LOCATIONS SPECIFIED IN THE PLAN, OR OTHERWISE ESTABLISHED BY THE ENGINEER.

WOOD POSTS SHALL BE NOMINAL 4 INCHES BY 4 INCHES SQUARE OR 4.5 INCHES DIAMETER ROUND, AND CONFORM TO 710.14.

STEEL POSTS SHALL BE NOMINAL PIPE SIZE 2 INCHES I.D., AND CONFORM TO AASHTO M 181.

ALL HARDWARE INCLUDING BUT NOT LIMITED TO PLATES, SCREWS, BOLTS, AND ETC. SHALL BE COMMERCIAL-GRADE GALVANIZED STEEL.

POSTS SHALL BE SET PER THE FIRST PARAGRAPH OF 606.03, AND SHALL IN NO INSTANCE BE ENCASED IN CONCRETE.

SUPPORT HARDWARE SHALL ACCOMMODATE EITHER A SINGLE OR A DOUBLE MAILBOX INSTALLATION, AND NO MORE THAN TWO BOXES MAY BE MOUNTED ON A SINGLE POST.

THE MAILBOX SHALL BE SECURELY AND NEATLY ATTACHED BY THE CONTRACTOR TO THE NEW SUPPORT. THE CONTRACTOR SHALL FURNISH ALL NECESSARY ATTACHMENT HARDWARE (NUTS, BOLTS, PLATES, SPACERS, AND WASHERS) AS NECESSARY TO ACCOMMODATE THE COMPLETE INSTALLATION.

IN THE ABSENCE OF A NEW BOX SUPPLIED BY THE OWNER, THE CONTRACTOR SHALL SALVAGE THE EXISTING BOX AND PLACE IT ON THE NEW SUPPORT. DUE CARE SHALL BE EXERCISED IN SUCH AN OPERATION, AND THE CONTRACTOR SHALL BE RESPONSIBLE FOR REPAIRING OR REPLACING ANY BOX DAMAGED BY IMPROPER HANDLING ON HIS PART, AS JUDGED AND DIRECTED BY THE ENGINEER.

THE CONTRACTOR SHALL BE RESPONSIBLE FOR COORDINATING WITH THE LOCAL POST MASTER REGARDING THE TIMING OF THE MOVEMENT OF ANY MAILBOX TO A NEW LOCATION.

PAYMENT UNDER THIS ITEM SHALL BE LIMITED TO FINAL PERMANENT INSTALLATIONS. TEMPORARY INSTALLATIONS SHALL BE IN ACCORDANCE WITH 107.10. HOWEVER, THE SAME MATERIAL AND SIZE LIMITATIONS AS FOR PERMANENT INSTALLATIONS SHALL APPLY.

MAILBOX SUPPORTS, COMPLETE IN PLACE, WILL BE PAID FOR AT THE CONTRACT UNIT PRICE PER EACH, FOR ITEM SPECIAL MAILBOX SUPPORT SYSTEM, SINGLE.

HORIZONTAL AND VERTICAL CONTROL HOL-241-8.92 PID 111449								
POINT ID	NORTHING	EASTING	ELEVATION	CODE	DESCRIPTION	STATION	OFFSET	CL ALIGNMENT NAME
CP100	349680.376	2165711.098	1280.03	IPINS	NOTE:ODOT CONTROL LEVELED	467+09.10	-22.00	⊘ CONST. S.R. 241
CP101	349652.889	2166624.901	1284.56	IPINS	NOTE:ODOT CONTROL LEVELED	476+22.38	19.41	⊘ CONST. S.R. 241
CP102	349708.181	2167397.832	1261.15	IPINS	NOTE:ODOT CONTROL LEVELED	483+95.49	24.66	⊘ CONST. S.R. 241
CP103	349025.009	2167398.876	1262.08	IPINS	NOTE:ODOT CONTROL LEVELED	483+71.35	659.20	⊘ CONST. S.R. 241
CP104	349990.175	2167392.519	1244.91	IPINS	NOTE:ODOT CONTROL LEVELED	486+77.53	22.99	⊘ CONST. S.R. 241
E220	349683.718	2167373.489	0.00	CSURV		483+71.35 / 118+08.77	⊘ / ⊘	⊘ CONST. S.R. 241 / ⊘ CONST. C.R. 77
E221	349682.629	2167603.476	0.00	CSURV		120+38.70	⊘	⊘ CONST. C.R. 77
E309	347875.183	2167402.810	0.00	CSURV		100+00	⊘	⊘ CONST. C.R. 77
JI	350108.795	2167367.994	0.00	CSURV		487+96.46	⊘	⊘ CONST. S.R. 241
PP900	349641.760	2164621.661	0.00	RSPK	RAILROAD SPIKE FOUND	456+19.20	⊘	⊘ CONST. S.R. 241

I:\Projec+Data\111449\Design\Roadway\Sheets\111449_GN001.dgn Sheet 8/19/2022 10:41:09 AM bhovanic

CALCULATED
BSH
CHECKED
ANS

GENERAL NOTES

HOL - 241 - 8.92

I:\ProjectData\11449\Design\Roadway\Sheets\11449_G001.dgn_Sheet 8/19/2022 10:47:03 AM bhovanic

SHEET NUM.											PART.	ITEM	ITEM	GRAND	UNIT	DESCRIPTION	SEE SHEET NO.	CALCULATED	BSH	CHECKED	ANS			
5	6	7		17	18	19	41				01/ENH/OT		EXT	TOTAL										
LS											LS	201	11000	LS		ROADWAY								
				121	75		10				206	202	23000	206	SY	CLEARING AND GRUBBING								
				5,051							5,051	202	30000	5,051	SF	PAVEMENT REMOVED								
							20				20	202	30200	20	FT	WALK REMOVED								
				6	219						225	202	32000	225	FT	STEPS REMOVED								
					130						130	202	32500	130	FT	CURB REMOVED								
				1							1	202	53100	1	EACH	CURB AND GUTTER REMOVED								
	LS										LS	202	98000	LS		MAILBOX REMOVED								
											2	202	98100	2	EACH	REMOVAL MISC.: LANDSCAPING REMOVED					7			
							2				50	202	98200	50	FT	REMOVAL MISC.: COMMERCIAL SIGN REMOVED					7			
	50															REMOVAL MISC.: CONDUIT					6			
											73	203	10000	73	CY									
											87	203	20000	87	CY	EXCAVATION								
							19				6	203	35110	6	CY	EMBANKMENT								
							6									GRANULAR MATERIAL, TYPE B								
				77	176		50				303	204	10000	303	SY	SUBGRADE COMPACTION								
				7,960							8,094	608	10000	8,094	SF	4" CONCRETE WALK								
				60							60	608	13000	60	SF	6" CONCRETE WALK								
				335							335	608	15000	335	SF	8" CONCRETE WALK								
				160							160	608	52000	160	SF	CURB RAMP								
				76			10				86	608	53020	86	SF	DETECTABLE WARNING								
											57	608	98100	57	FT	WALKWAY, MISC.: HANDRAIL					41			
											1	SPECIAL	69050100	1	EACH	MAILBOX SUPPORT SYSTEM, SINGLE					5			
																EROSION CONTROL								
											2	659	00100	2	EACH	SOIL ANALYSIS TEST								
				2							144	659	00300	144	CY	TOPSOIL								
				144							1,301	659	00500	1,301	SY	SEEDING AND MULCHING, CLASS 1								
				1,301							65	659	14000	65	SY	REPAIR SEEDING AND MULCHING								
				65							0.18	659	20000	0.18	TON	COMMERCIAL FERTILIZER								
				0.18																				
											0.27	659	31000	0.27	ACRE	LIME								
				0.27							8	659	35000	8	MGAL	WATER								
				8																				
											6,900	832	30000	6,900	EACH	EROSION CONTROL								
																DRAINAGE								
											50	611	97400	50	FT	CONDUIT, MISC.: TYPE E FOR DRAINAGE DISCHARGE CONTINUANCE					6			
	50										1	611	99711	1	EACH	PRECAST REINFORCED CONCRETE OUTLET, AS PER PLAN					41			
																PAVEMENT								
											26	301	56000	26	CY	ASPHALT CONCRETE BASE, PG64-22, (449)								
											41	304	20000	41	CY	AGGREGATE BASE								
											10	407	20000	10	GAL	NON-TRACKING TACK COAT								
											3	408	10001	3	GAL	PRIME COAT, AS PER PLAN								
											5	441	70000	5	CY	ASPHALT CONCRETE SURFACE COURSE, TYPE 1, (449), PG64-22					5			
											18	452	10010	18	SY	6" NON-REINFORCED CONCRETE PAVEMENT, CLASS QC 1P								
				18							59	452	12010	59	SY	8" NON-REINFORCED CONCRETE PAVEMENT, CLASS QC 1P								
				59																				
											130	609	12000	130	FT	COMBINATION CURB AND GUTTER, TYPE 2								
											221	609	26000	221	FT	CURB, TYPE 6								
											69	609	30000	69	FT	CURB, TYPE 8								
							12				6	609	98000	6	FT	CURB, MISC.: DRIVE CURB					7			
				6																				

GENERAL SUMMARY

HOL - 241 - 8.92

REF. NO.	SHEET NO.	STATION STATIONING REFERENCES @ CONST. S.R. 241 UNLESS OTHERWISE SHOWN Δ - @ CONST. C.R. 77		SIDE	202	202	202	204	301	304	407	408	441	609	609	609							
					PAVEMENT REMOVED [L x W / 9]	CURB REMOVED	CURB AND GUTTER REMOVED	SUBGRADE COMPACTION [L x W / 9]	ASPHALT CONCRETE BASE, PG64-22, (449) [2' W x 10.75' T x L]	AGREGATE BASE [W x 6' T x L] [* = CADD AREA]	NON-TRACKING TACK COAT [2' W x L / 9 x 0.055 GAL/SY x 2 APP.]	PRIME COAT, AS PER PLAN [CADD AREA]	ASPHALT CONCRETE SURFACE COURSE, TYPE 1, (449), PG64-22 [W x T x L]	CURB, TYPE 6	CURB, TYPE 8	COMBINATION CURB AND GUTTER, TYPE 2							
					SY	FT	FT	SY	CY	CY	GAL	GAL	CY	FT	FT	FT							
C-1	14	476+04.78	477+21.00	LT	26	117		46	8	8	3		1	117									
C-2	14	478+28.50	478+97.00	RT				15		5 *					69								
C-3	14	480+12.20	480+76.53	LT	14	65		25	4	4	2		1	65									
C-4	16	114+91.32 Δ	116+20.46 Δ	RT	29		130	79	9	13	3		1			130							
C-5	16	116+24.00 Δ	116+34.00 Δ	RT		10																	
C-6	16	116+55.89 Δ	116+82.00 Δ	RT	6	27		11	2	2	1		1	27									
SH-1	13	473+10.75	473+18.41	RT						2 *		3											
TOTALS CARRIED TO GENERAL SUMMARY					75	219	130	176	23	34	9	3	4	209	69	130							

ASPHALT CONCRETE
SURFACE COURSE, TYPE 1,
(449), PG64-22
[W x T x L]

DESIGN SPECIFICATIONS:

THIS STRUCTURE CONFORMS TO THE 9TH EDITION OF THE "LRFD BRIDGE DESIGN SPECIFICATIONS" ADOPTED BY THE AMERICAN ASSOCIATION OF STATE HIGHWAY AND TRANSPORTATION OFFICIALS, 2020, AND THE ODOT BRIDGE DESIGN MANUAL, 2020.

DESIGN DATA: THE FOLLOWING DESIGN DATA IS ASSUMED:

CONCRETE CLASS QC1 - COMPRESSIVE STRENGTH 4,000 PSI (FOOTING, WALLS)

REINFORCING STEEL (WALLS / FOOTER):

- ASTM A615, A616, OR A617
- GRADE 60 MINIMUM YIELD STRENGTH 60,000 PSI
- (ALL REINFORCING STEEL SHALL BE EPOXY COATED)

POROUS BACKFILL WITH GEOTEXTILE FABRIC:

POROUS BACKFILL WITH GEOTEXTILE FABRIC 2'-0" THICK SHALL BE PLACED BEHIND THE WALL ONLY AND SHALL EXTEND TO 12" BELOW THE EMBANKMENT SURFACE AS SHOWN ON THE WALL TYPICAL SECTION ON SHEET 42. GEOTEXTILE FABRIC TYPE A SHALL BE PLACED BETWEEN THE POROUS BACKFILL AND REPLACED EXCAVATION ADJACENT TO THE STRUCTURE. IT SHALL TURN UNDER THE BOTTOM OF THE POROUS BACKFILL.

ITEM 611 - PRECAST REINFORCED CONCRETE OUTLET, AS PER PLAN

THE PRECAST REINFORCED CONCRETE OUTLET AS SHOWN IN SCD DM-1.1 SHALL BE INSTALLED WITHOUT THE TIED CONCRETE BLOCK MAT, TYPE 1.

ITEM 608 - WALKWAY, MISC.: HANDRAIL

AN ALUMINUM HANDRAIL PER SCD RM-2.1 SHALL BE INSTALLED ON THE RAMP WALLS AS SHOWN IN THE PLANS.

ITEM 203, GRANULAR MATERIAL, TYPE B

THE REPLACEMENT MATERIAL ON THE ROAD-SIDE OF THE WALL SHALL BE GRANULAR MATERIAL TYPE B CONFORMING TO 703.16.C.2 AS SHOWN ON SHEET 42.

THE FOLLOWING ESTIMATED QUANTITIES HAVE BEEN CARRIED TO THE PEDESTRIAN RAMP & WALL ESTIMATED QUANTITIES TABLE, THIS SHEET:

ITEM 203, GRANULAR MATERIAL, TYPE B 6 CU. YD.

ITEM 203, EMBANKMENT

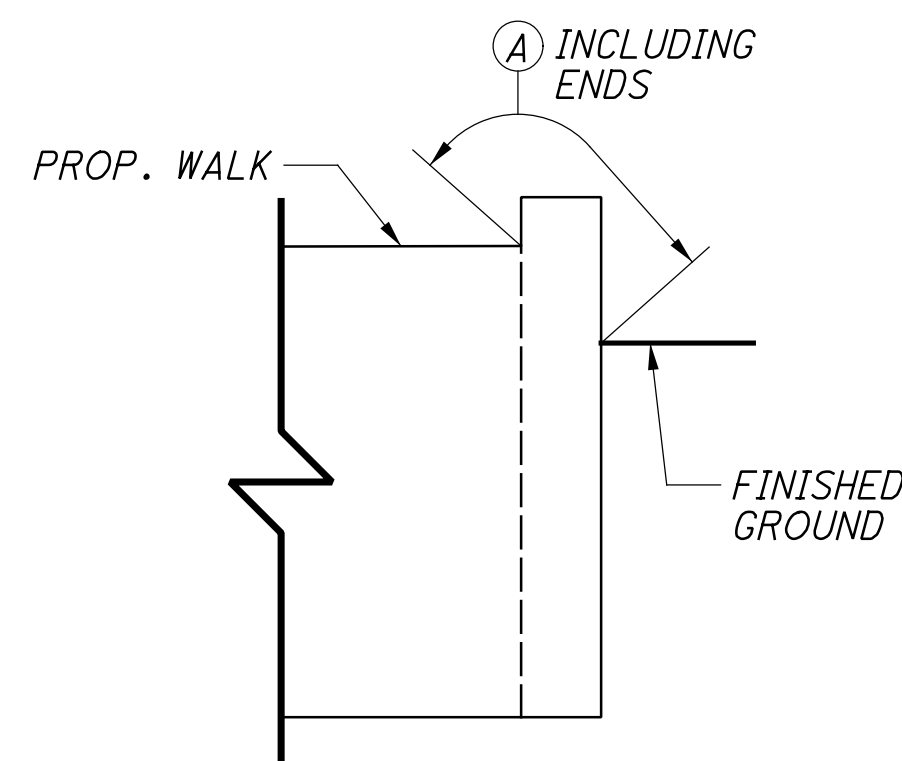
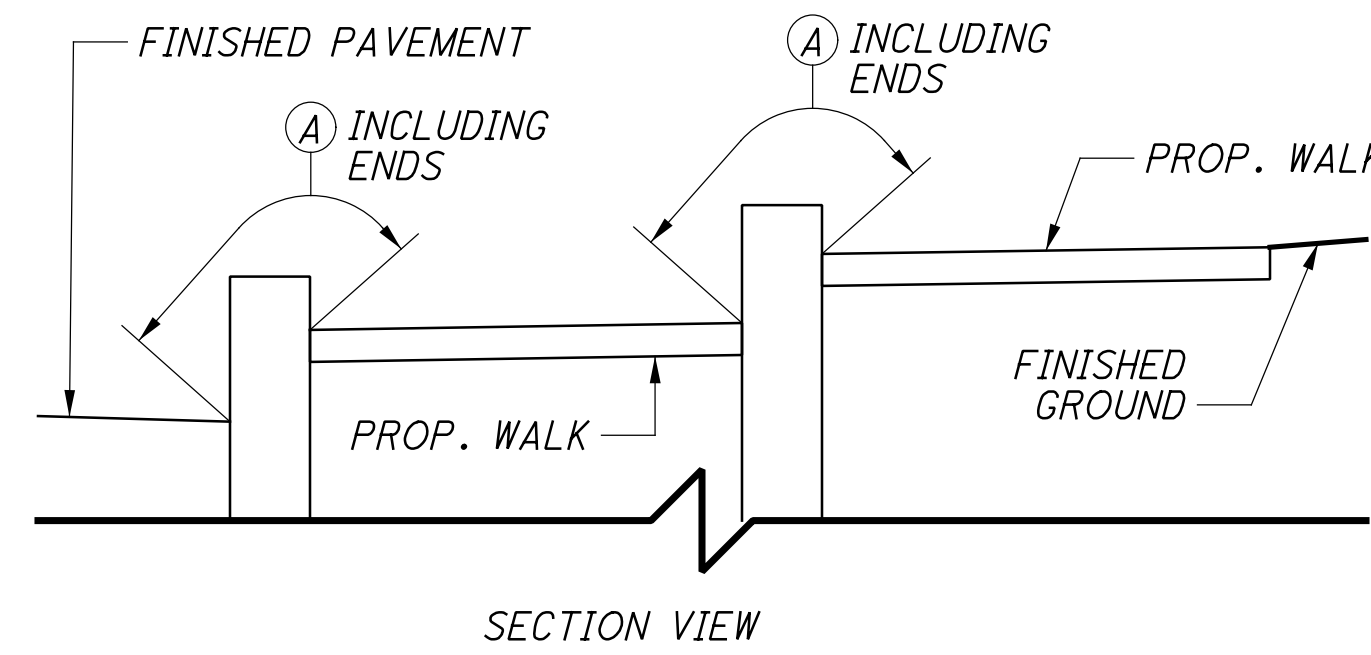
THE REPLACEMENT MATERIAL ON THE MAINLINE WALK SIDE OF THE WALL SHALL BE ITEM 203, EMBANKMENT AS SHOWN ON SHEET 42.

THE FOLLOWING ESTIMATED QUANTITIES HAVE BEEN CARRIED TO THE PEDESTRIAN RAMP & WALL ESTIMATED QUANTITIES TABLE, THIS SHEET:

ITEM 203, EMBANKMENT 19 CU. YD.

SEALING OF WALLS:

ALL EXPOSED FORESLOPE WALL CONCRETE SHALL BE SEALED WITH EPOXY-URETHANE SEALER. THE LIMITS SHALL BE AS SHOWN IN THE DIAGRAMS BELOW. PAYMENT FOR THE EPOXY-URETHANE SEALER SHALL BE PER ITEM 512 - SEALING OF CONCRETE SURFACES (EPOXY-URETHANE).



PROFILE VIEW
(MIRROR FOR OPPOSITE SIDE)

LIMITS OF ITEM 512 - SEALING CONCRETE SURFACES (EPOXY-URETHANE)

(A) - SEAL ENTIRE CONCRETE SURFACE AREA

ITEM 503, UNCLASSIFIED EXCAVATION, AS PER PLAN

THIS ITEM SHALL CONSIST OF THE EXCAVATION FOR THE PROPOSED FOOTING AND WALL.

THE CONTRACTOR SHALL USE TEMPORARY SHEETING FOR THIS WORK. A LUMP SUM QUANTITY FOR ITEM 503 - COFFERDAMS AND EXCAVATION BRACING HAS BEEN CARRIED TO THE PEDESTRIAN RAMP & WALL ESTIMATED QUANTITIES TABLE, THIS SHEET.

THE FOLLOWING ESTIMATED QUANTITIES HAVE BEEN CARRIED TO THE PEDESTRIAN RAMP & WALL ESTIMATED QUANTITIES TABLE, THIS SHEET:

ITEM 503, UNCLASSIFIED EXCAVATION, AS PER PLAN 71 CU. YD.

BASIS OF PAYMENT:

ALL LABOR, EQUIPMENT AND INCIDENTALS REQUIRED TO CONSTRUCT THE WALLS ARE INCLUDED WITH ITEM 511, CLASS QC1 CONCRETE, RETAINING/WINGWALL NOT INCLUDING FOOTING.

ALL LABOR, EQUIPMENT AND INCIDENTALS REQUIRED TO CONSTRUCT THE FOOTING ARE INCLUDED WITH ITEM 511 - CLASS QC1 CONCRETE, FOOTING.

PAYMENT FOR REINFORCING STEEL IS INCLUDED WITH ITEM 509 - EPOXY COATED REINFORCING STEEL.

PEDESTRIAN RAMP & WALL ESTIMATED QUANTITIES			
ITEM	TOTAL	UNIT	DESCRIPTION
503	LS		COFFERDAMS AND EXCAVATION BRACING
503	71	CY	UNCLASSIFIED EXCAVATION, AS PER PLAN
509	1,502	LB	EPOXY COATED REINFORCING STEEL
511	10	CY	CLASS QC1 CONCRETE, RETAINING/WINGWALL NOT INCLUDING FOOTING
511	8	CY	CLASS QC1 CONCRETE, FOOTING
512	20	SY	SEALING OF CONCRETE SURFACES (EPOXY-URETHANE)
516	11	SF	1/4" PREFORMED EXPANSION JOINT FILLER
516	21	SF	3/4" PREFORMED EXPANSION JOINT FILLER
518	2	CY	POROUS BACKFILL WITH GEOTEXTILE FABRIC
518	33	FT	6" PERFORATED CORRUGATED PLASTIC PIPE
518	5	FT	6" NON-PERFORATED CORRUGATED PLASTIC PIPE, INCLUDING SPECIALS
613	16	CY	LOW STRENGTH MORTAR BACKFILL
611	1	EA	PRECAST REINFORCED CONCRETE OUTLET, AS PER PLAN
202	10	SY	PAVEMENT REMOVED [45.5' L x 2' W / 9']
202	20	FT	STEPS REMOVED [5' W x 4 STEPS]
203	19	CY	EMBANKMENT
203	6	CY	GRANULAR MATERIAL, TYPE B
204	50	SY	SUBGRADE COMPACTION [CADD AREA]
301	3	CY	ASPHALT CONCRETE BASE, PG64-22 (449) [2' W x 10.75" T x 45.5' L]
304	7	CY	AGREGATE BASE FOR PAVEMENT: [(3.5' W x 6" T x 12' L) + (2' W x 6" T x 33.5' L)] FOR FOUNDATION: [8.67' W x 32.46' L x 6" T]
407	1	GAL	NON-TRACKING TACK COAT [2' W x 45.5' L / 9 x 0.055 GAL / SY x 2 APP.]
441	1	CY	ASPHALT CONCRETE SURFACE COURSE, TYPE 1, (449), PG64-22 [2' W x 10.75" T x 45.5' L]
608	134	SF	4" CONCRETE WALK [29.8' L x 4.5' W]
608	10	SF	DETECTABLE WARNING [X' L x X' W]
608	57	FT	WALKWAY, MISC.: HANDRAIL
609	12	FT	CURB, TYPE 6
TOTALS CARRIED TO THE GENERAL SUMMARY			

LEGEND

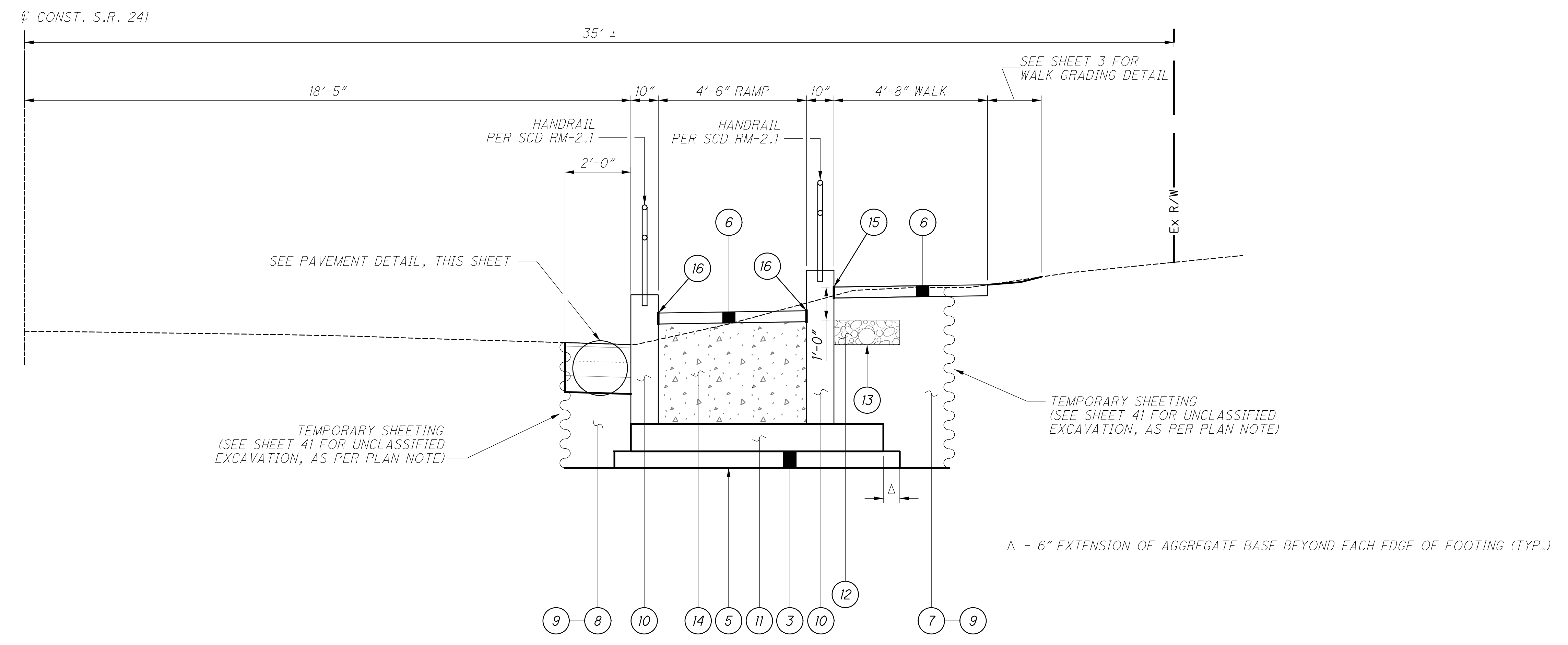
- EL. - ELEVATION
- C.J. - CONSTRUCTION JOINT
- O.C.J. - OPTIONAL CONSTRUCTION JOINT
- E.F. - EACH FACE
- F.F. - FAR FACE
- N.F. - NEAR FACE
- P.E.J.F. - PREFORMED EXPANSION JOINT FILLER
- S.O. - SERIES OF
- SPA. - SPACING
- T&B - TOP AND BOTTOM

CALCULATED
BSH
CHECKED
ANS

PEDESTRIAN RAMP AND WALL GENERAL NOTES

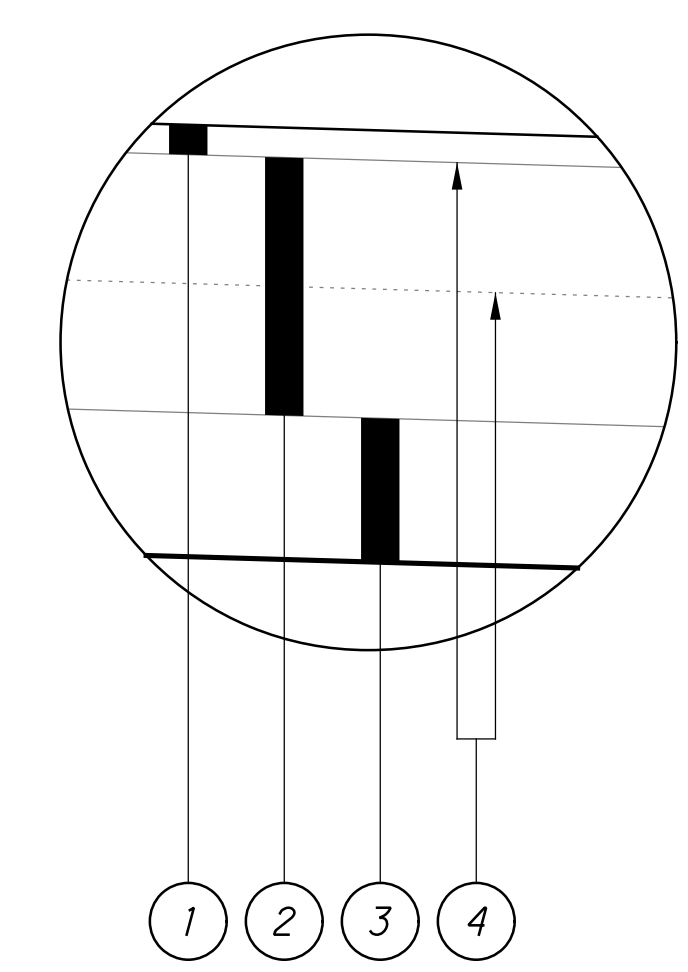
HOL-241-8.92

I:\ProjectData\11449\Design\Roadway\Sheet\11449_WN001.dgn Sheet 8/19/2022 10:51:47 AM bhovanic



LEGEND:

- 1 ITEM 441 - 1/4" ASPHALT CONCRETE SURFACE COURSE, TYPE 1, (449), PG64-22
- 2 ITEM 301 - 10 3/4" ASPHALT CONCRETE BASE, PG64-22 (449)
- 3 ITEM 304 - 6" AGGREGATE BASE
- 4 ITEM 407 - NON-TRACKING TACK COAT
- 5 ITEM 204 - SUBGRADE COMPACTION
- 6 ITEM 608 - 4" CONCRETE WALK
- 7 ITEM 203 - EMBANKMENT
- 8 ITEM 203 - GRANULAR MATERIAL, TYPE B
- 9 ITEM 503 - UNCLASSIFIED EXCAVATION, AS PER PLAN
- 10 ITEM 511 - CLASS QC1 CONCRETE, RETAINING/WINGWALL NOT INCLUDING FOOTING
- 11 ITEM 511 - CLASS QC1 CONCRETE, FOOTING
- 12 ITEM 518 - POROUS BACKFILL WITH GEOTEXTILE FABRIC
- 13 ITEM 518 - 6" PERFORATED CORRUGATED PLASTIC PIPE
- 14 ITEM 613 - LOW STRENGTH MORTAR BACKFILL
- 15 ITEM 516 - 1/4" PREFORMED EXPANSION JOINT FILLER
- 16 ITEM 516 - 3/4" PREFORMED EXPANSION JOINT FILLER



PAVEMENT DETAIL
NOT TO SCALE

I:\ProjectData\11449\Design\Roadway\Sheets\11449_WD002.dgn Sheet 8/19/2022 10:52:40 AM bhovanic