

FED. ROAD DIST. N ^o	STATE	FED. AID PROJ. N ^o	FISCAL YEAR
10	OHIO	185	1920

I.C.H. N^o 145 SEC K
HOLMES COUNTY

1
10

FILE NO.

File #498

STATE HIGHWAY DEPARTMENT OF OHIO
BUREAU OF CONSTRUCTION

SEC-K- MANSFIELD MILLERSBURG ROAD

I.C.H. N^o 145 PET. N^o 3943

HOLMES COUNTY

WASHINGTON TOWNSHIP 1920

INDEX

Title Page	p. 1
Typical Cross Sections	p. 2
Plans & Profile	p. 3-6
Cross Sections	p. 7-9
Summary Sheet	p. 10

The Standard Specifications of the State Highway Department of Ohio in force on date of contract will govern this improvement.

I hereby approve these plans and declare that the making of this improvement will require the closing to traffic of the highway and that detours will be provided as shown on the plans and estimates.

Approved: W.W. Purdy
Date, 4-18-21 Resident Engineer

Approved: Walter G. Smith
Date, 5-2-21 Division Engineer

Approved: Est. J. Smith
Date, 5-4-1921 Chief Highway Engineer

Approved: Leah C. Henrich
Date, 4/1/21 State Highway Commissioner

Recommended for Approval: _____
Date, _____ District Engineer
Bureau of Public Roads.

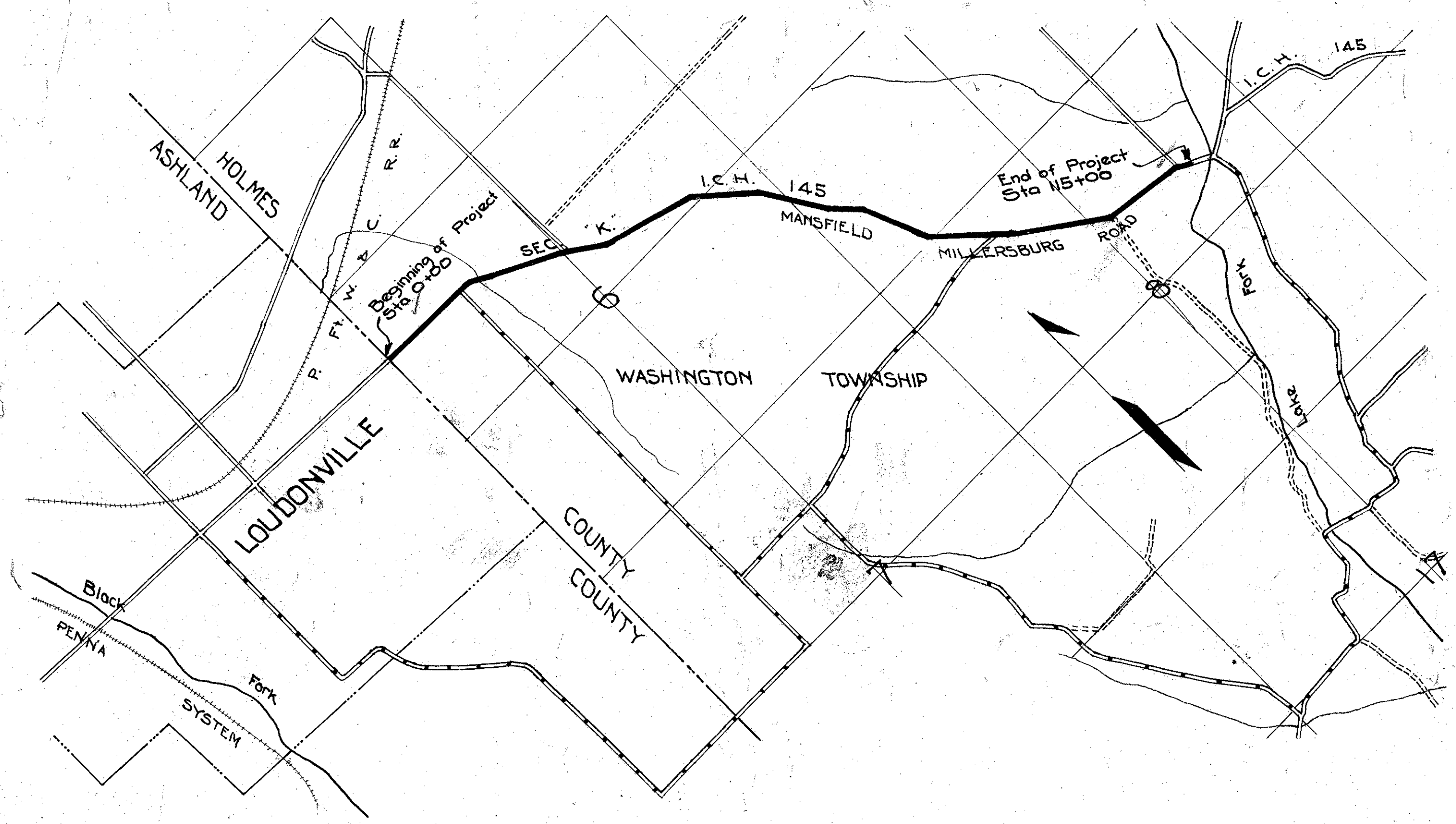
Recommended for Approval: _____
Date, _____ Chief Engineer
Bureau of Public Roads.

Approved: _____
Date, _____ Chief of Bureau.

CONSTRUCTION BUREAU
NOV 27 1956
GROUND PHOTOLAB

CONVENTIONAL SIGNS

County Line	-----
Township Line	-----
Section Line	-----
Property Line not fenced	-----
Center Line	-----
Fence	-----
Stream Railroad	-----



We, the Commissioners of Holmes County hereby approve these plans and certify that the right-of-way 60' wide except as shown on plans, is available for the construction, maintenance and repair of the above highway.

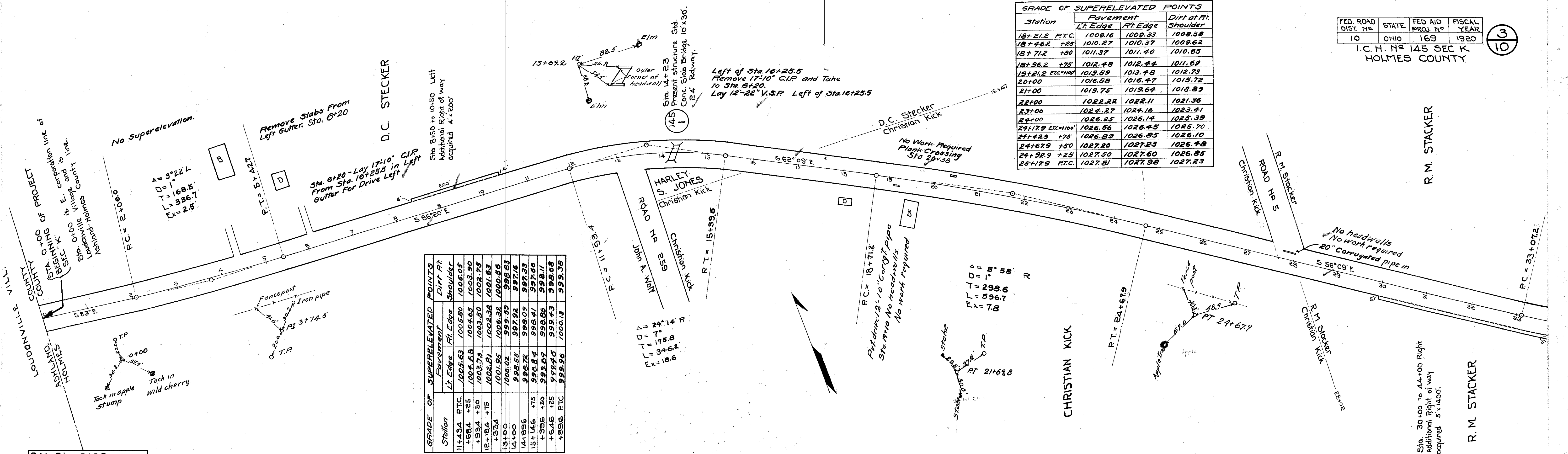
John Bunkley
J. L. List
Edw. Blase

Date, 4-18-21 County Commissioners

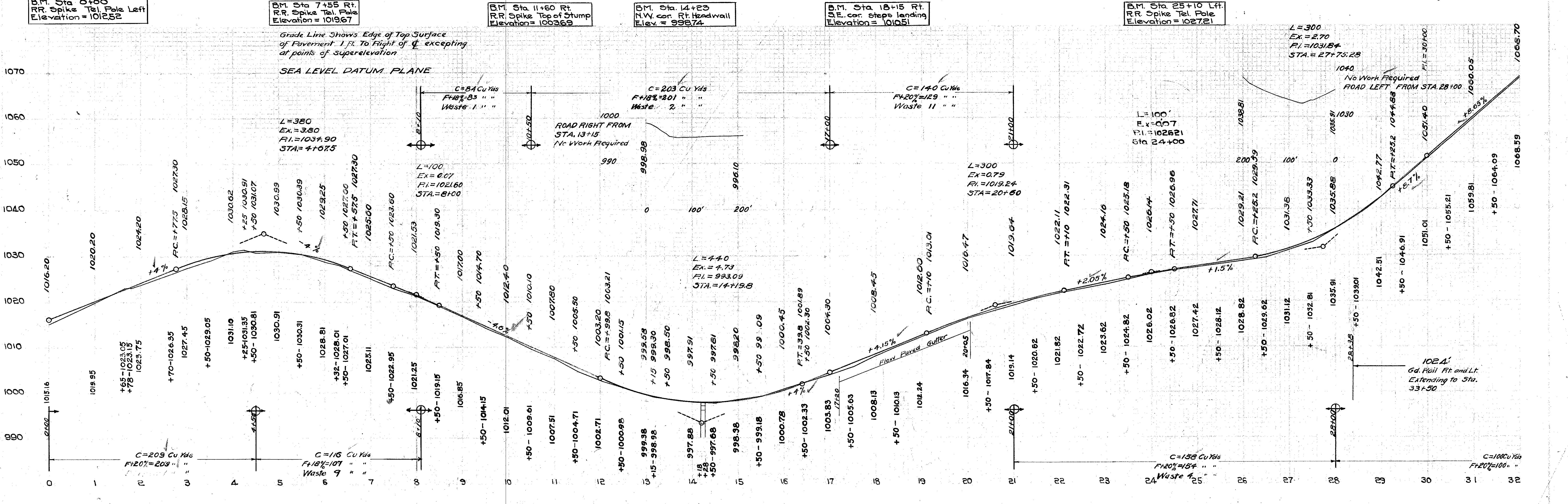
LOCATION PLAN
Scale 4" = 1 Mile
PORTION TO BE IMPROVED
DETOUR

SCALES
Plan 1" = 100'
Profile (Horizontal) 1" = 100'
Profile (Vertical) 1" = 10'
Cross Sections 1" = 5'

Station	GRADE OF SUPERELEVATED POINTS		Dirt at Pt. Shoulder
	Pavement Lt. Edge	Pt. Edge	
18+21.2 P.T.C.	1008.16	1009.39	1008.58
18+46.2 +25	1010.27	1010.37	1009.62
18+71.2 +50	1011.37	1011.40	1010.65
18+96.2 +75	1012.48	1012.44	1011.69
19+21.2 P.T.C. = 1000	1013.59	1013.48	1012.73
20+100	1016.58	1016.47	1015.72
21+00	1019.75	1019.64	1018.89
22+00	1022.22	1022.11	1021.36
23+00	1024.27	1024.16	1023.41
24+100	1026.25	1026.14	1025.39
24+17.9 P.T.C. = 1005	1026.56	1026.45	1025.70
24+42.9 +75	1026.89	1026.85	1026.10
24+67.9 +50	1027.20	1027.23	1026.48
24+92.9 +25	1027.50	1027.60	1026.85
25+17.9 P.T.C.	1027.81	1027.98	1027.23



Station	GRADE OF SUPERELEVATED POINTS		Dirt at Pt. Shoulder
	Pavement Lt. Edge	Pt. Edge	
11+43.4 P.T.C.	1003.63	1005.80	1005.05
+93.4 +25	1004.68	1004.65	1003.90
+93.4 +50	1003.78	1003.80	1002.74
12+18.4 +75	1002.81	1002.82	1001.63
+33.4	1001.95	1001.92	1000.46
13+100	1000.02	997.92	997.16
14+100	998.55	997.72	997.33
15+14.6 +75	998.84	998.41	997.66
+39.6 +50	999.07	998.56	998.11
+64.6 +25	999.24	999.43	998.68
1899.6 P.T.C.	999.56	1000.13	999.35



Grade Line Shows Edge of Top Surface of Pavement 1 ft. To Flight of ∇ excepting at points of super-elevation

SEA LEVEL DATUM PLANE

Grade Line Shows Edge of Top Surface of Pavement 1 ft. To Flight of ∇ excepting at points of super-elevation

SEA LEVEL DATUM PLANE

Grade Line Shows Edge of Top Surface of Pavement 1 ft. To Flight of ∇ excepting at points of super-elevation

SEA LEVEL DATUM PLANE

Grade Line Shows Edge of Top Surface of Pavement 1 ft. To Flight of ∇ excepting at points of super-elevation

SEA LEVEL DATUM PLANE

Grade Line Shows Edge of Top Surface of Pavement 1 ft. To Flight of ∇ excepting at points of super-elevation

SEA LEVEL DATUM PLANE

Grade Line Shows Edge of Top Surface of Pavement 1 ft. To Flight of ∇ excepting at points of super-elevation

SEA LEVEL DATUM PLANE

Grade Line Shows Edge of Top Surface of Pavement 1 ft. To Flight of ∇ excepting at points of super-elevation

SEA LEVEL DATUM PLANE

Grade Line Shows Edge of Top Surface of Pavement 1 ft. To Flight of ∇ excepting at points of super-elevation

SEA LEVEL DATUM PLANE

Grade Line Shows Edge of Top Surface of Pavement 1 ft. To Flight of ∇ excepting at points of super-elevation

SEA LEVEL DATUM PLANE

Grade Line Shows Edge of Top Surface of Pavement 1 ft. To Flight of ∇ excepting at points of super-elevation

SEA LEVEL DATUM PLANE

Grade Line Shows Edge of Top Surface of Pavement 1 ft. To Flight of ∇ excepting at points of super-elevation

SEA LEVEL DATUM PLANE

Grade Line Shows Edge of Top Surface of Pavement 1 ft. To Flight of ∇ excepting at points of super-elevation

SEA LEVEL DATUM PLANE

GRADE OF SUPERELEVATED POINTS			
STATION	PAVEMENT		DIRT Rt. SHOULDER
	Lt. EDGE	Rt. EDGE	
32+57.2 R.T.C.	1089.48	1089.65	1089.90
+82.2 +25	1075.64	1075.81	1075.93
33+07.2 +50	1077.80	1077.97	1077.97
+32.2 +75	1079.96	1080.21	1080.50
+57.2 R.T.C.	1082.12	1082.50	1083.04
34+00	1085.83	1086.25	1086.75
35+00	1089.49	1089.90	1090.40
36+00	1103.43	1103.55	1104.05
+16.3 EXT. 100	1104.45	1104.97	1105.47
+41.3 +75	1106.73	1106.98	1107.27
36+66.3 +50	1108.90	1109.07	1109.07
36+91.3 +25	1111.07	1111.24	1110.86
37+16.3 R.T.C.	1113.25	1113.42	1112.67

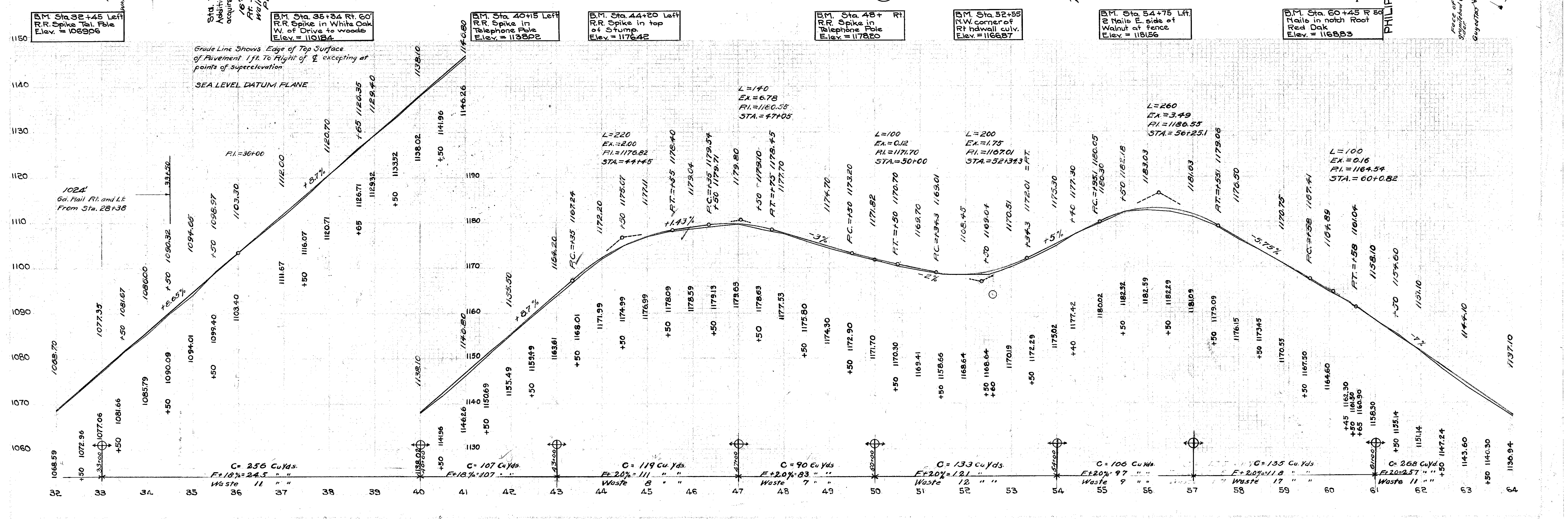
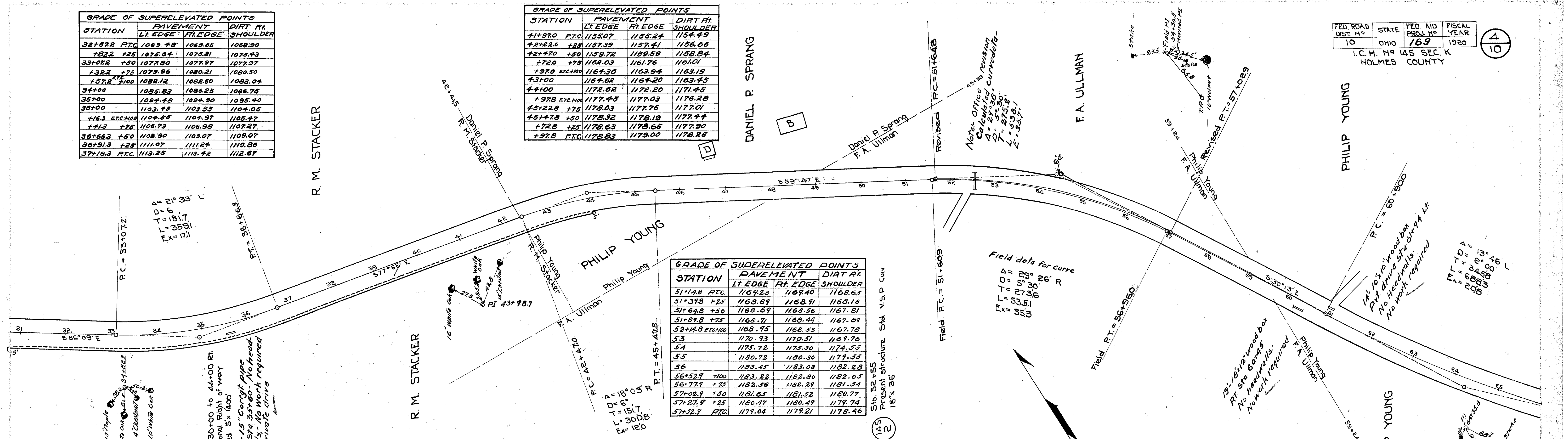
GRADE OF SUPERELEVATED POINTS			
STATION	PAVEMENT		DIRT Rt. SHOULDER
	Lt. EDGE	Rt. EDGE	
41+97.0 R.T.C.	1155.07	1155.24	1154.49
+2+22.0 +25	1157.39	1157.41	1156.66
+2+47.0 +50	1159.72	1159.59	1158.84
+72.0 +75	1162.03	1161.76	1161.01
+97.0 EXT. 100	1164.30	1163.94	1163.19
43+00	1167.62	1167.20	1167.45
44+00	1172.62	1172.20	1171.45
+97.8 EXT. 100	1177.45	1177.03	1176.28
+5+22.8 +75	1178.03	1177.76	1177.01
+5+47.8 +50	1178.32	1178.19	1177.44
+72.8 +25	1178.63	1178.65	1177.90
+97.8 R.T.C.	1178.83	1179.00	1178.25

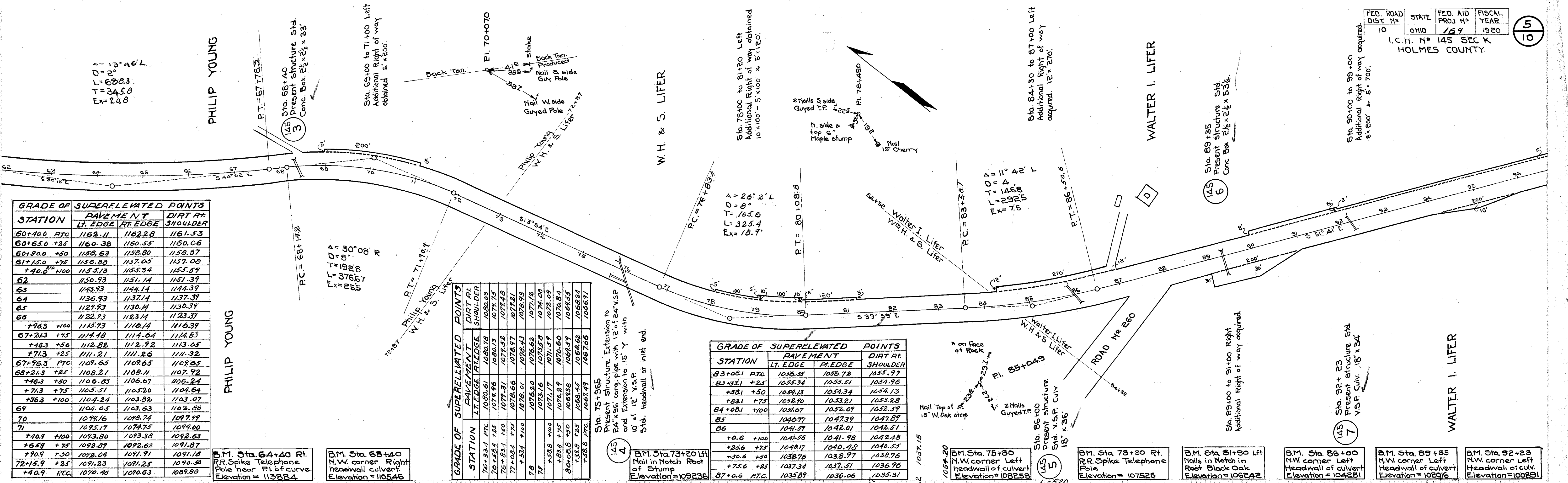
GRADE OF SUPERELEVATED POINTS			
STATION	PAVEMENT		DIRT Rt. SHOULDER
	Lt. EDGE	Rt. EDGE	
51+14.8 R.T.C.	1169.23	1169.40	1168.65
51+37.8 +25	1168.89	1168.91	1168.16
51+64.8 +50	1168.69	1168.36	1167.81
51+89.8 +75	1168.71	1168.44	1167.69
52+14.8 EXT. 100	1168.95	1168.53	1167.78
53	1170.93	1170.51	1169.76
54	1175.72	1175.30	1174.53
55	1180.72	1180.30	1179.55
56	1183.45	1183.03	1182.28
56+52.9 +100	1183.22	1182.80	1182.05
56+77.9 +25	1182.58	1182.29	1181.54
57+02.9 +50	1181.65	1181.52	1180.77
57+27.9 +25	1180.47	1180.49	1179.74
57+52.9 R.T.C.	1179.04	1179.21	1178.46

FED. ROAD DIST. NO.	STATE	FED. AID PROJ. NO.	FISCAL YEAR
10	OHIO	169	1920

10

I.C.H. No. 145 SEC. K HOLMES COUNTY

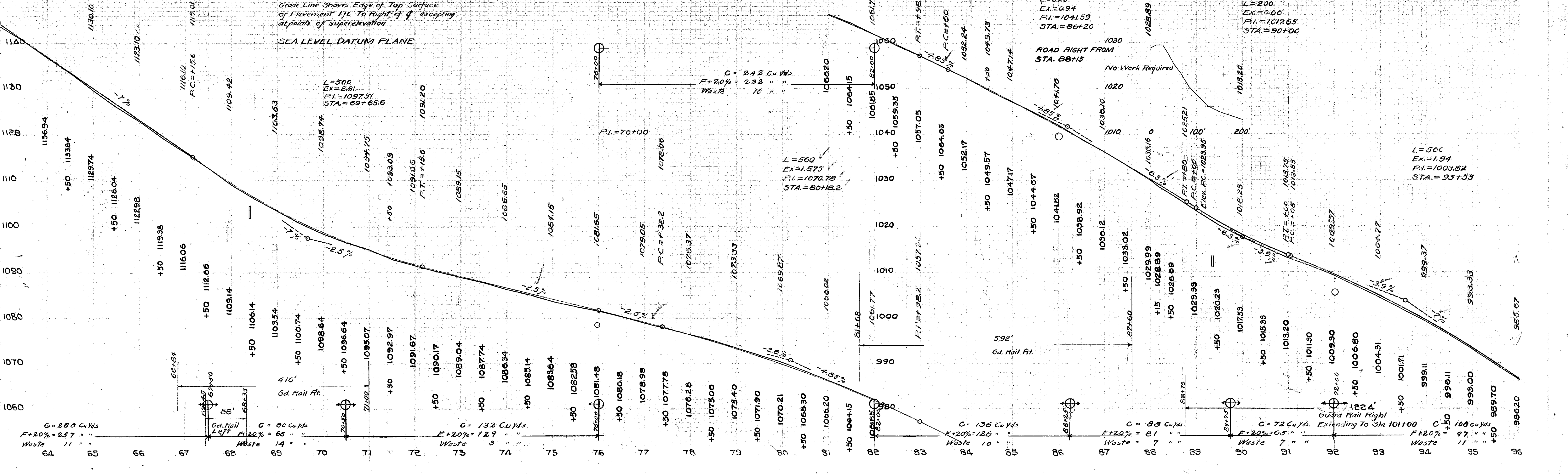




STATION	GRADE OF SUPERELEVATED POINTS	
	PAVEMENT LT. EDGE	DIRT RT. SHOULDER RT. EDGE
60+00 PTC	1162.11	1162.28
60+65.0 +25	1160.38	1160.55
60+90.0 +50	1158.63	1158.80
61+15.0 +75	1156.88	1157.05
+20.0 +100	1155.13	1155.59
62	1150.93	1151.14
63	1143.93	1144.14
64	1136.93	1137.14
65	1129.93	1130.14
66	1122.93	1123.14
+96.3 +100	1115.93	1116.14
67+21.3 +75	1114.18	1114.64
+46.3 +50	1112.42	1112.92
+71.3 +25	1111.21	1111.26
67+96.3 PTC	1109.65	1109.65
68+21.3 +25	1108.21	1108.11
+46.3 +50	1106.83	1106.67
+71.3 +75	1105.51	1105.20
+96.3 +100	1104.24	1103.82
69	1104.05	1103.63
70	1099.16	1099.74
71	1094.17	1094.75
+40.9 +100	1093.80	1093.38
+65.9 +75	1092.87	1092.62
+90.9 +50	1091.04	1091.18
72+15.9 +25	1091.23	1091.25
+40.9 PTC	1090.46	1090.63

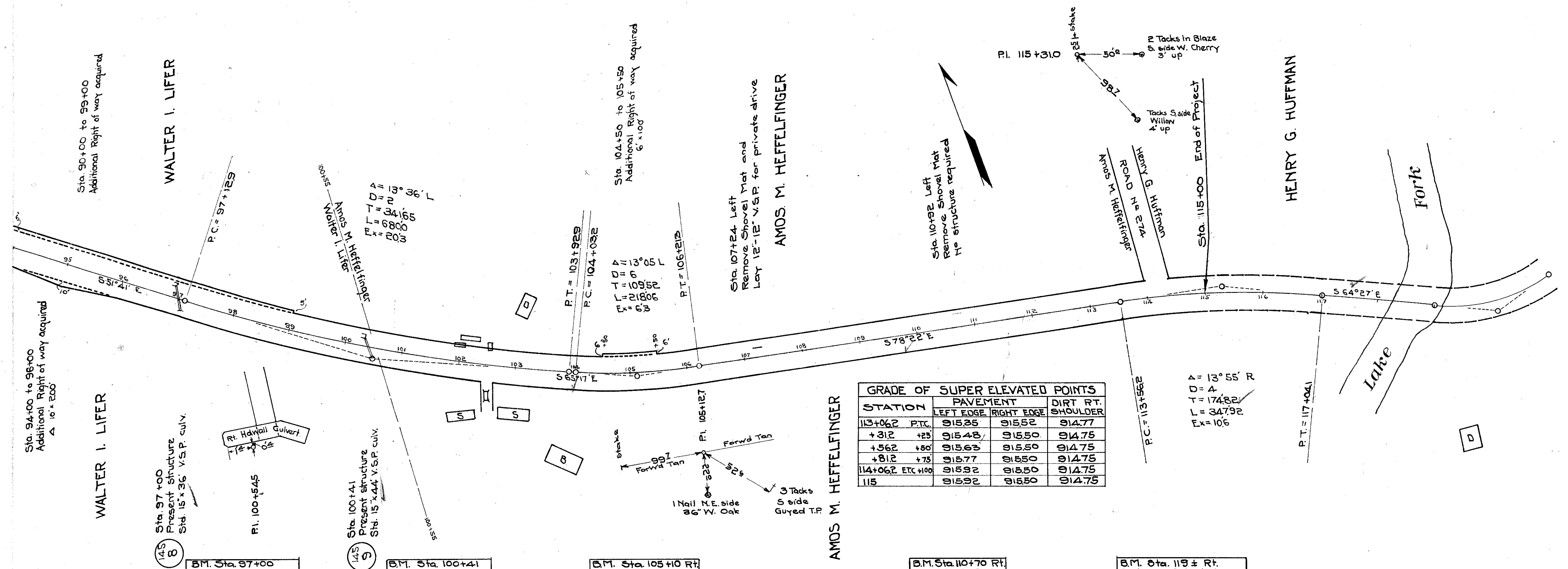
STATION	GRADE OF SUPERELEVATED POINTS	
	PAVEMENT LT. EDGE	DIRT RT. SHOULDER RT. EDGE
76+33.4 PTC	1080.81	1080.78
+25.6 +25	1079.96	1079.75
+50.1 +50	1079.31	1079.52
+74.1 +75	1078.66	1078.97
+98.1 +100	1078.01	1078.43
77	1073.16	1073.59
+25.6 +75	1072.29	1072.09
+50.1 +50	1071.63	1071.54
+74.1 +25	1070.97	1070.84
+98.1 PTC	1070.31	1070.24
78	1065.45	1065.62
+25.6 PTC	1064.79	1064.66

STATION	GRADE OF SUPERELEVATED POINTS	
	PAVEMENT LT. EDGE	DIRT RT. SHOULDER RT. EDGE
83+08.1 PTC	1036.55	1036.78
+25.6 +25	1035.34	1035.51
+50.1 +50	1034.13	1034.34
+74.1 +75	1032.90	1033.21
+98.1 +100	1031.67	1032.09
84	1026.97	1027.39
85	1021.57	1022.01
+0.6 +100	1041.56	1041.98
+25.6 +75	1040.17	1040.48
+50.1 +50	1038.76	1038.97
+74.1 +25	1037.34	1037.51
+98.1 PTC	1035.89	1036.06



STATION	ELEVATION	GRADE	NOTE
64	1136.94		
65	1123.74	1.5%	
66	1119.36		
67	1116.06		
68	1112.66		
69	1109.14		
70	1106.14		
71	1103.74		
72	1099.74		
73	1094.75		
74	1089.75		
75	1084.75		
76	1079.75		
77	1074.75		
78	1069.75		
79	1064.75		
80	1059.75		
81	1054.75		
82	1049.75		
83	1044.75		
84	1039.75		
85	1034.75		
86	1029.75		
87	1024.75		
88	1019.75		
89	1014.75		
90	1009.75		
91	1004.75		
92	999.75		
93	994.75		
94	989.75		
95	984.75		
96	979.75		

STATION	PAVEMENT		DIRT RT. SHOULDER
	LEFT EDGE	RIGHT EDGE	
96+62.9 P.T.C.	98210	98227	98152
+87.9 +25'	98035	98052	98003
97+12.9 +50'	97860	97877	97854
+37.9 +75'	97685	97702	97705
+62.9 ETC +100'	97510	97531	97556
98	97250	97271	97296
99	96550	96571	96596
100	95850	95871	95896
101	95173	95194	95219
102	94607	94628	94653
103	94162	94183	94208
+86.5 +66.7	93859	93880	93905
104+03.2 -50'	93802	93823	93871
+28.2 -25'	93717	93764	93821
+53.2 ETC	93632	93695	93771
105	93473	93536	93612
+71.5 ETC.	93231	93294	93370
+96.3 +75'	93146	93193	93236
106+21.3 +50'	93061	93092	93101
+46.3 +25'	92984	93001	92975
+71.3 P.T.C.	92909	92926	92851



STATION	PAVEMENT		DIRT RT. SHOULDER
	LEFT EDGE	RIGHT EDGE	
113+06.2 P.T.C.	91525	91552	91477
+31.2 +25'	91548	91550	91475
+56.2 +50'	91563	91550	91475
+81.2 +75'	91577	91550	91475
114+06.2 ETC +100'	91592	91550	91475
115	91592	91550	91475

