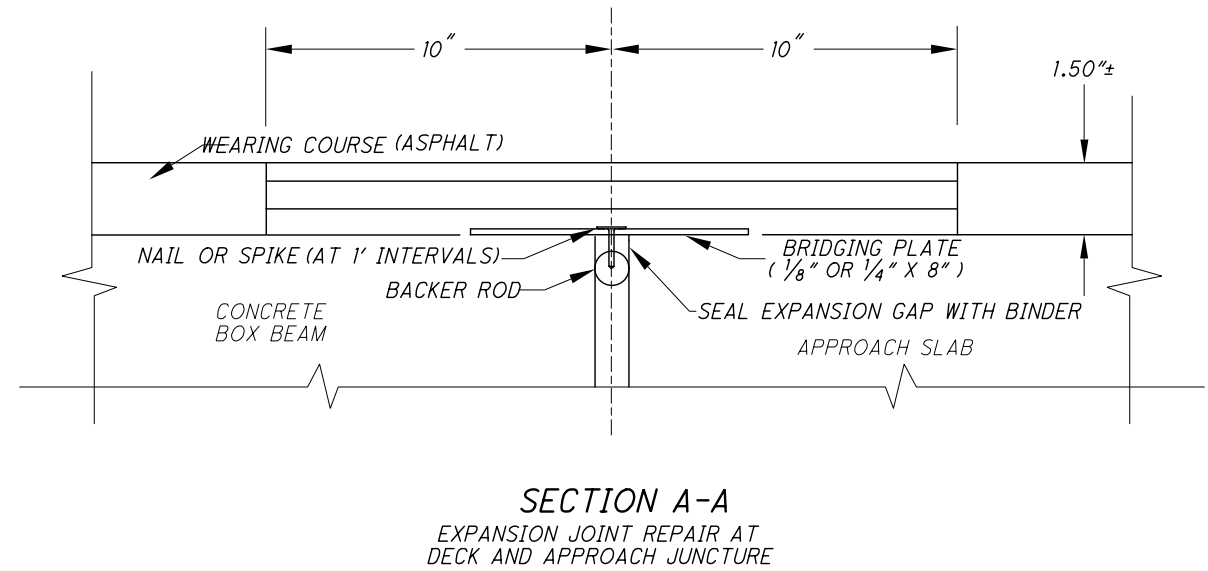
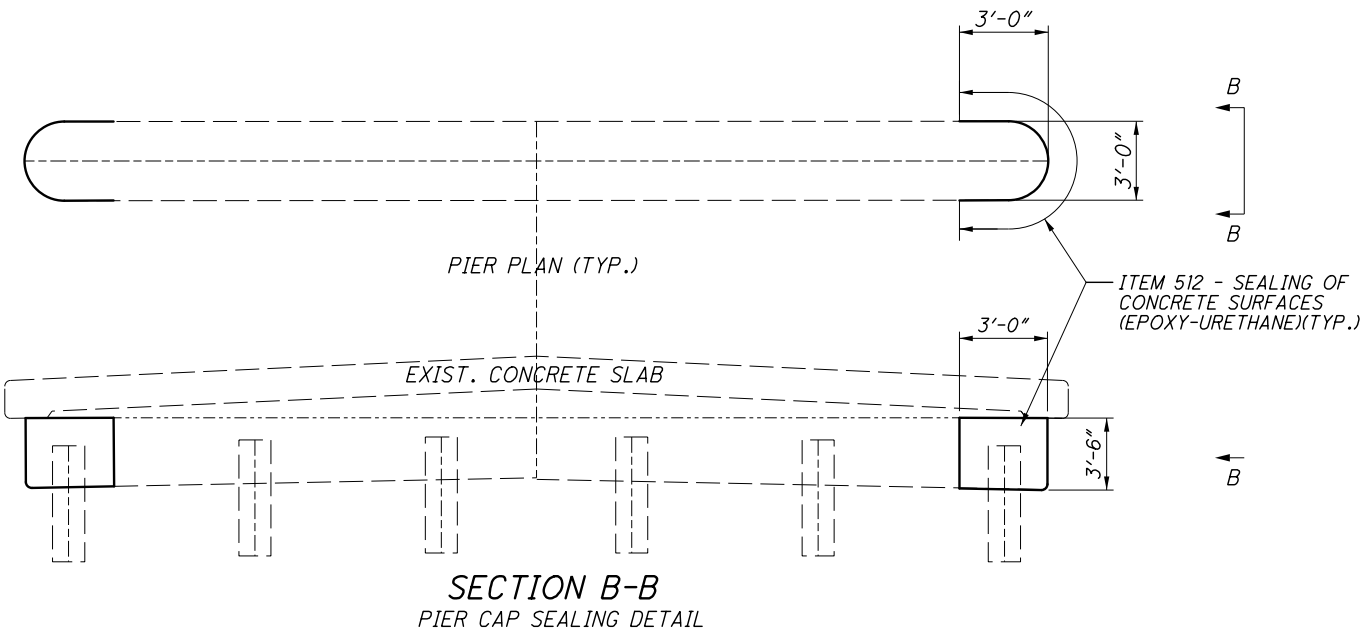
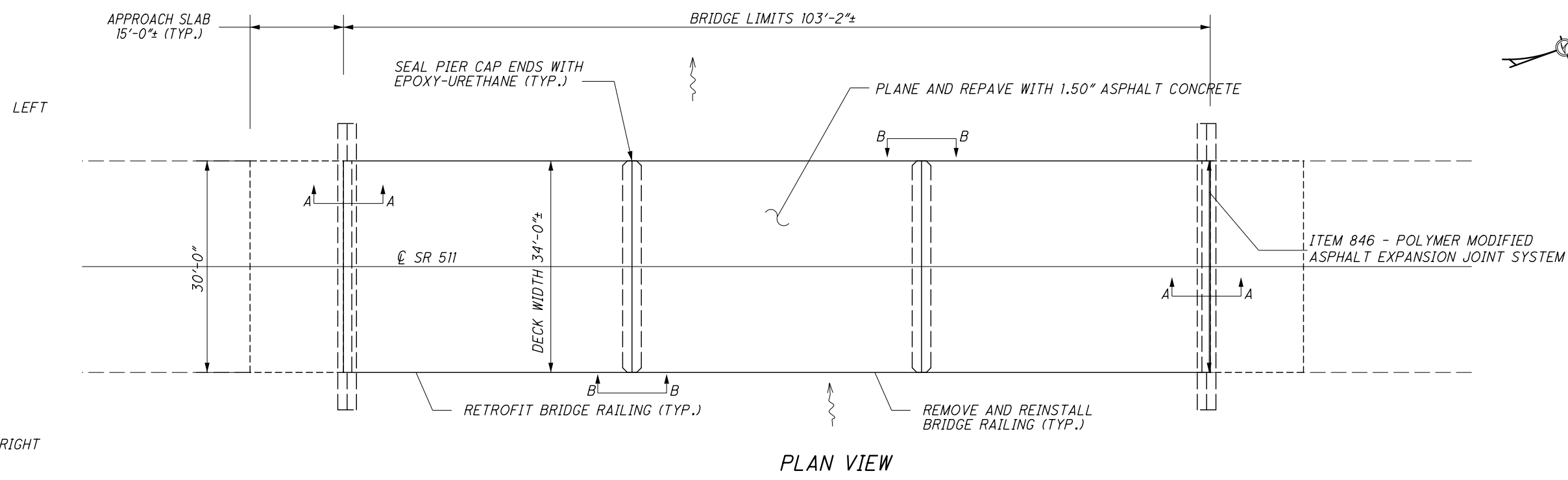


DESIGN FILE: \\projects\88767\structures\88767-LOR-511-1420.dgn
 WORKSTATION: goodnig DATE: 8/28/2014 MODELNAME: Design



ITEM	QUANTITY	UNIT	DESCRIPTION
202	225	FT	BRIDGE RAILING REMOVED FOR REUSE, AS PER PLAN
202	60	FT	REMOVAL MISC.: POLYMER MODIFIED ASPHALT EXPANSION JOINT SYSTEM
512	99	SY	SEALING OF CONCRETE SURFACES (EPOXY-URETHANE)
512	99	SY	REMOVAL OF EXISTING COATINGS FROM CONCRETE SURFACES
517	225	FT	DEEP BEAM BRIDGE RETROFIT RAILING
846	60	FT	POLYMER MODIFIED ASPHALT EXPANSION JOINT SYSTEM

ALL QUANTITIES CARRIED TO THE STRUCTURE SUMMARY

NOTES:

- 1) GUARDRAIL NOT SHOWN IN THE PLAN VIEW.
- 2) FOR DEEP BEAM BRIDGE RETROFIT RAILING DETAILS, SEE DBR-3-11.
- 3) SEAL PIER CAPS ENDS 3'-0" ALL AROUND WITH ITEM 512 - SEALING CONCRETE SURFACES (EPOXY-URETHANE)
- 4) SEE STRUCTURE SHEET 2/2 FOR WINGWALL, ABUTMENT, AND DECK EDGE DETAILS.

PLAN VIEW
 LOR-511-1420
 OVER EAST FORK OF VERMILION RIVER

LOR-511-13.41

DESIGNED CAG	DRAWN CAG	REVIEWED CAD	DATE 6-13-14
CHECKED CAD	REVISED	STRUCTURE FILE NUMBER 4700945	DESIGN AGENCY ODOT DISTRICT THREE OFFICE OF PLANNING AND ENGINEERING

1 / 2

21
31