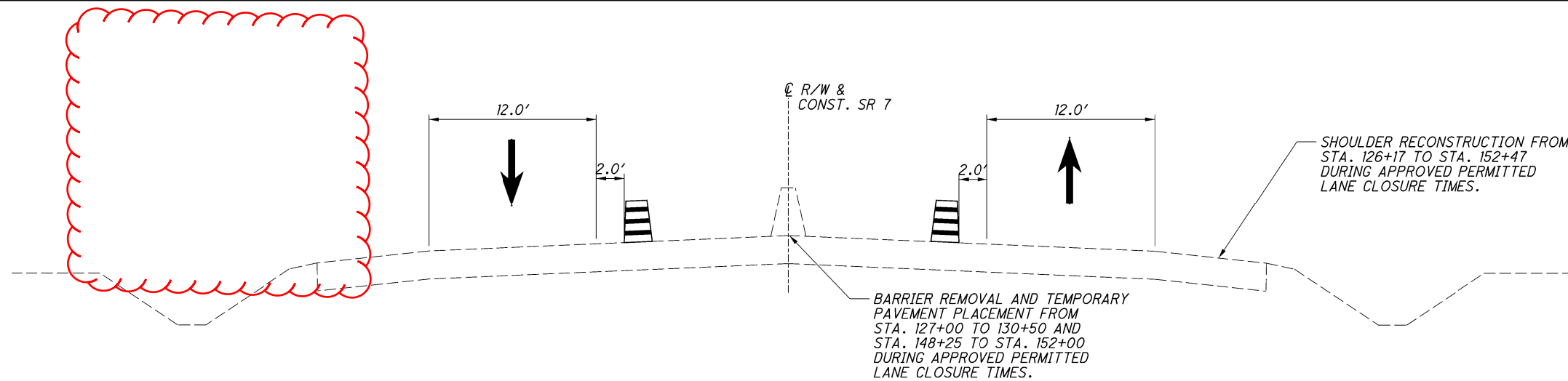
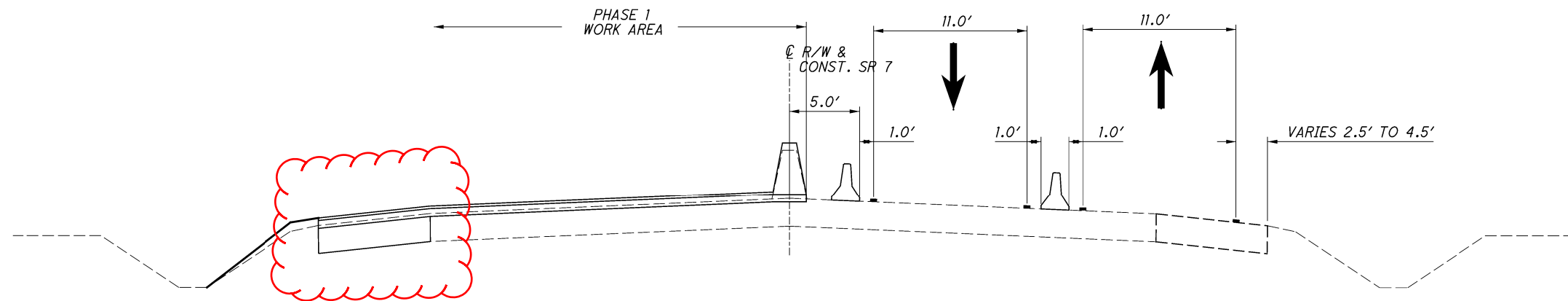


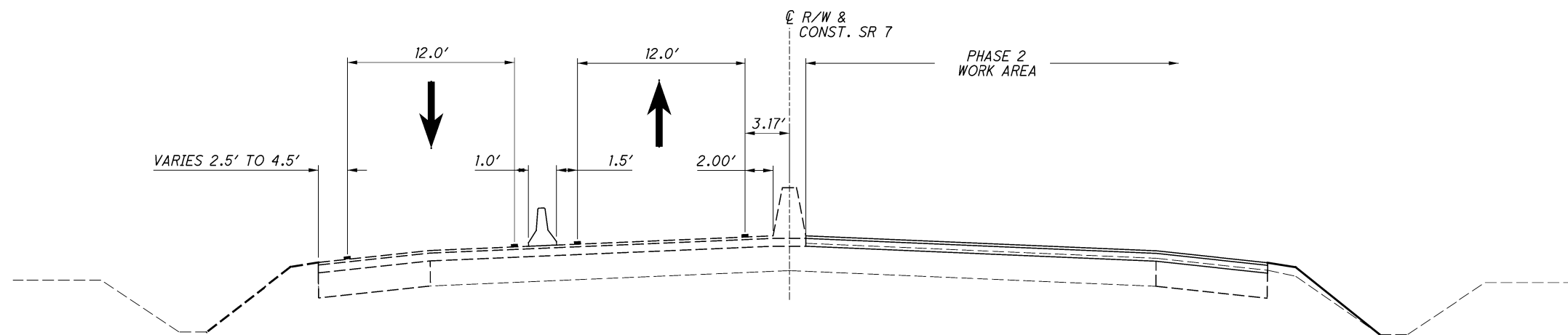
P:\AKron-CH\Project\TOH00T20_PEO\Drawing\07648\Design\001\Sheets\07648_MY001.dgn Sheet 5/3/2021 10:01:54 AM djozity



ROADWAY SECTIONS
**MAINTENANCE OF TRAFFIC
 PRE-PHASE 1**



ROADWAY SECTIONS
**MAINTENANCE OF TRAFFIC
 PHASE 1**



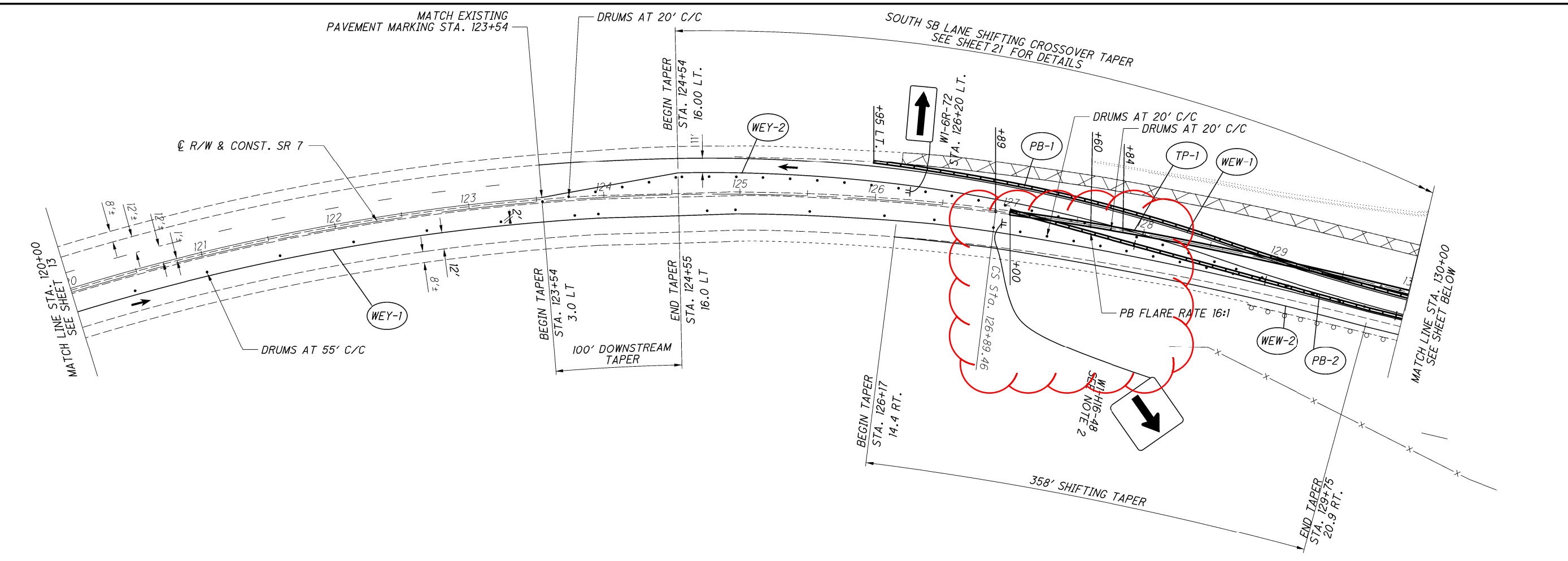
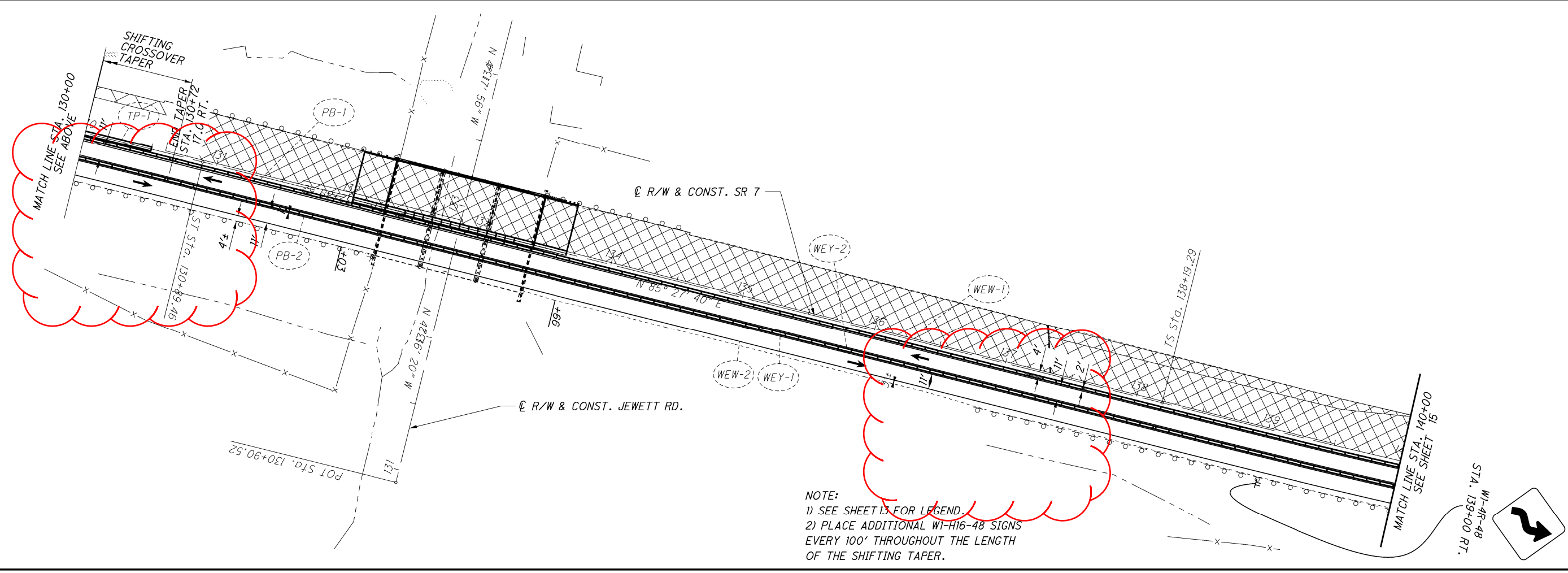
ROADWAY SECTIONS
**MAINTENANCE OF TRAFFIC
 PHASE 2**

NOTE: FOR MAINTENANCE OF TRAFFIC PHASE 1 AND 2 JEF-7-20.59 STRUCTURE SECTIONS OVER JEWETT ROAD AND JEF-7-20.84 STRUCTURE SECTIONS OVER RAMP C / CR 7 REFERENCE BRIDGE SHEETS 54 AND 71 -72

MAINTENANCE OF TRAFFIC PHASED TYPICAL SECTIONS

JEF-7-(20.54)(20.82)

P:\AKron-3H\Project\TOH00T20\PE01\Drawing\07648\Design\MOT\Sheets\07648_MP012.dgn Sheet 5/3/2021 11:31:55 AM djozity



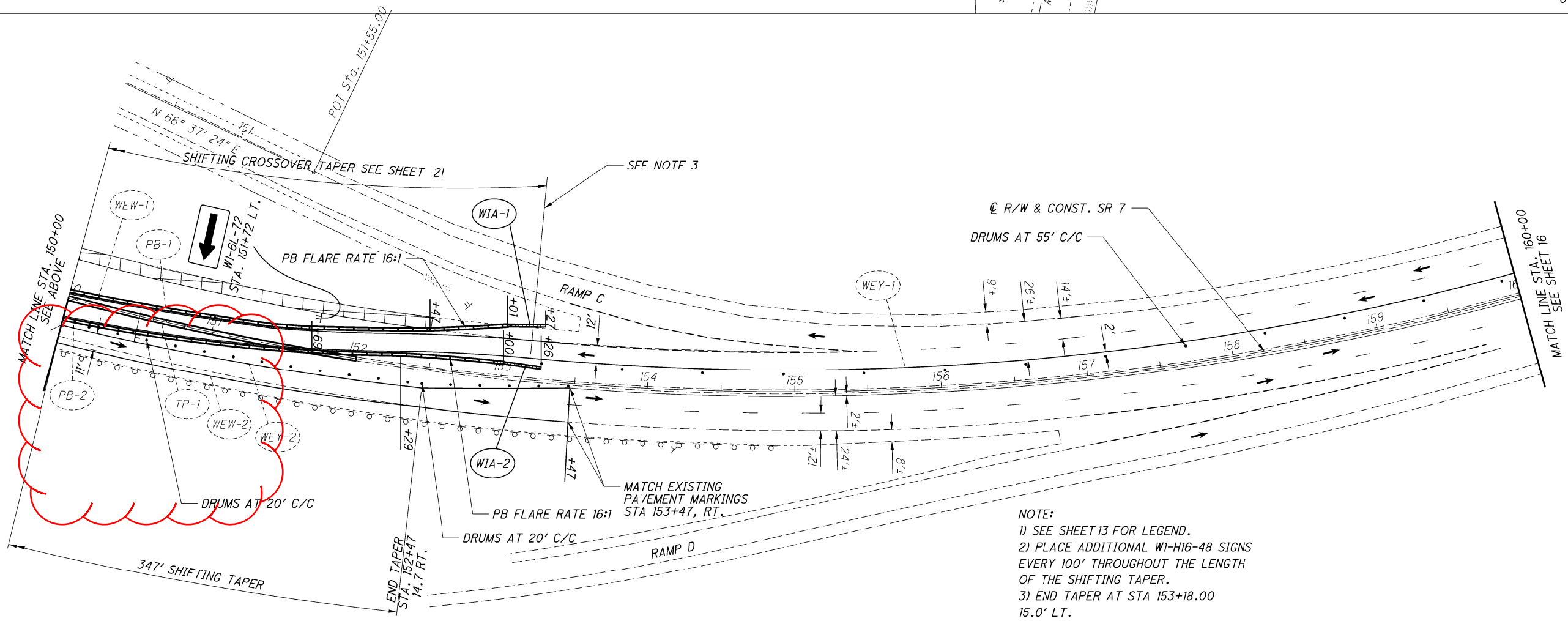
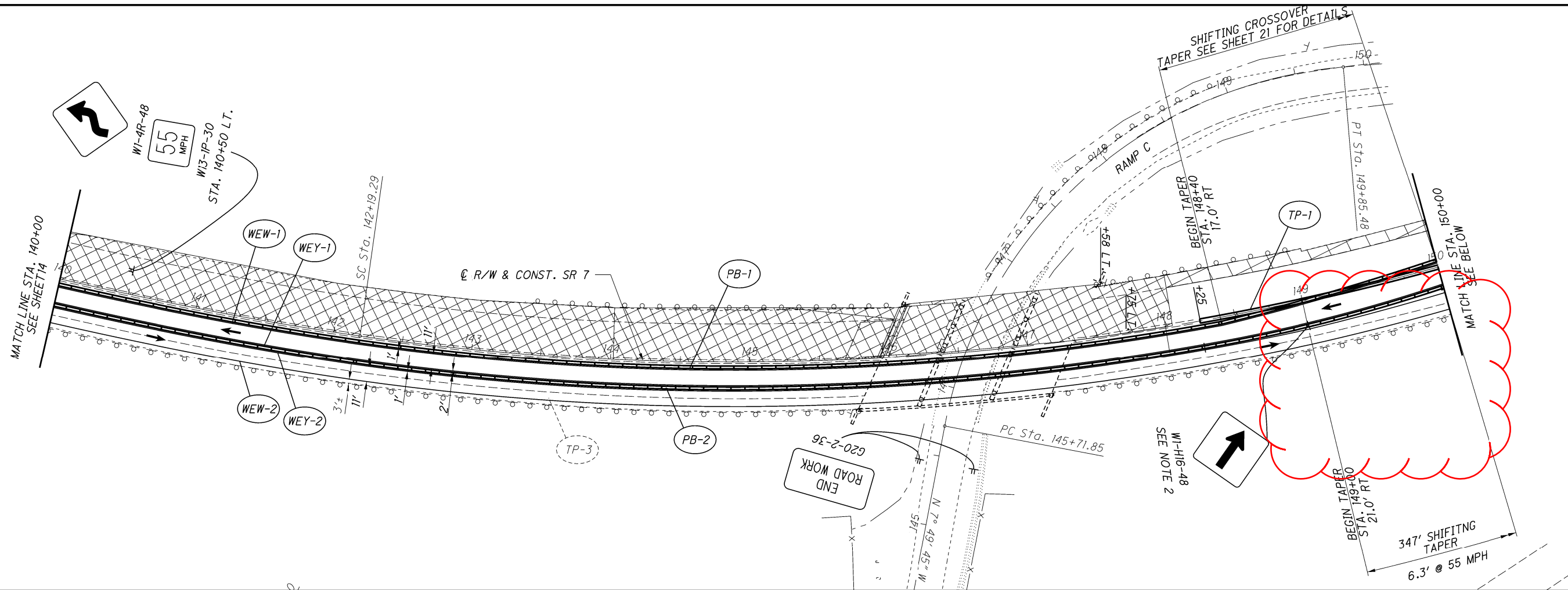
CALCULATED
AJP
CHECKED
DRJ

0 20 40 80
HORIZONTAL
SCALE IN FEET

**MAINTENANCE OF TRAFFIC - SR 7
PHASE 1 STA. 120+00 TO STA. 140+00**

JEF-7-(20.54)(20.82)

P:\AKron-CH\Project\TOH00T20_PEO\Drawings\07648_Design\MOT\Sheets\07648_MP013.dgn Sheet 5/3/2021 11:31:49 AM djozity



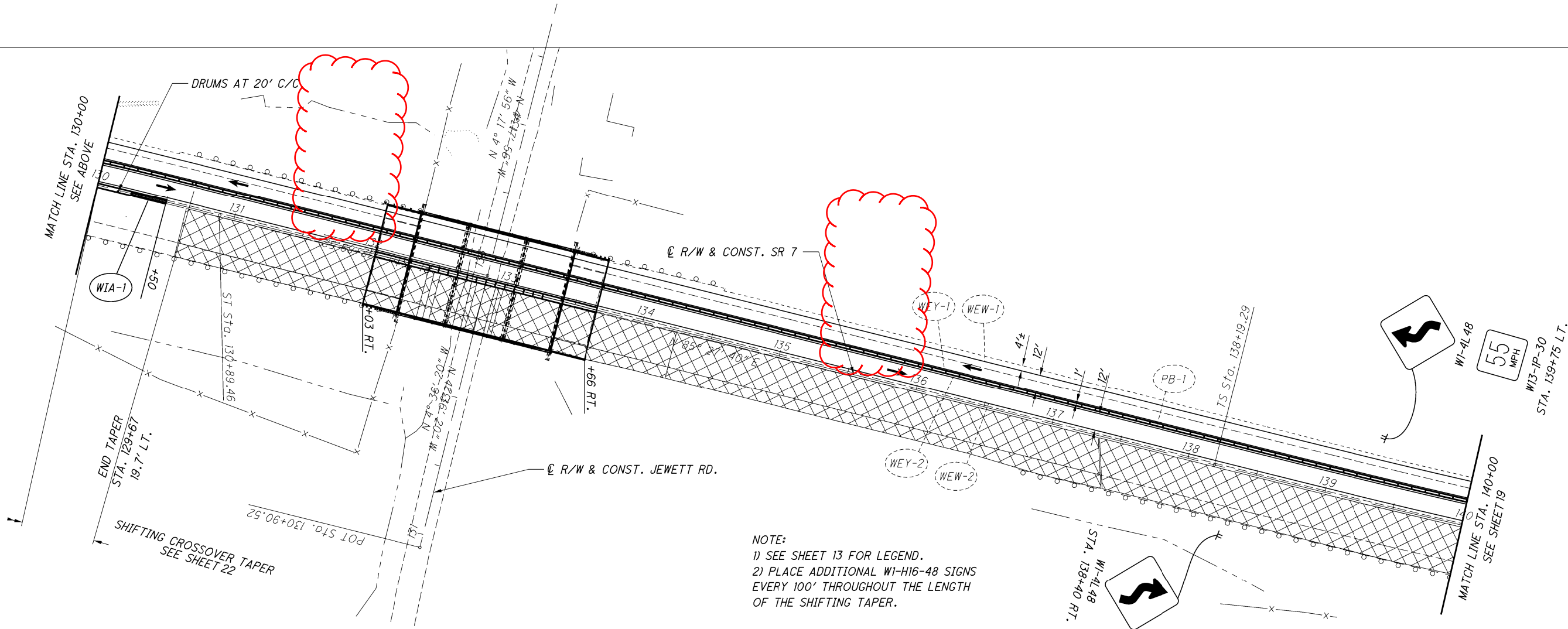
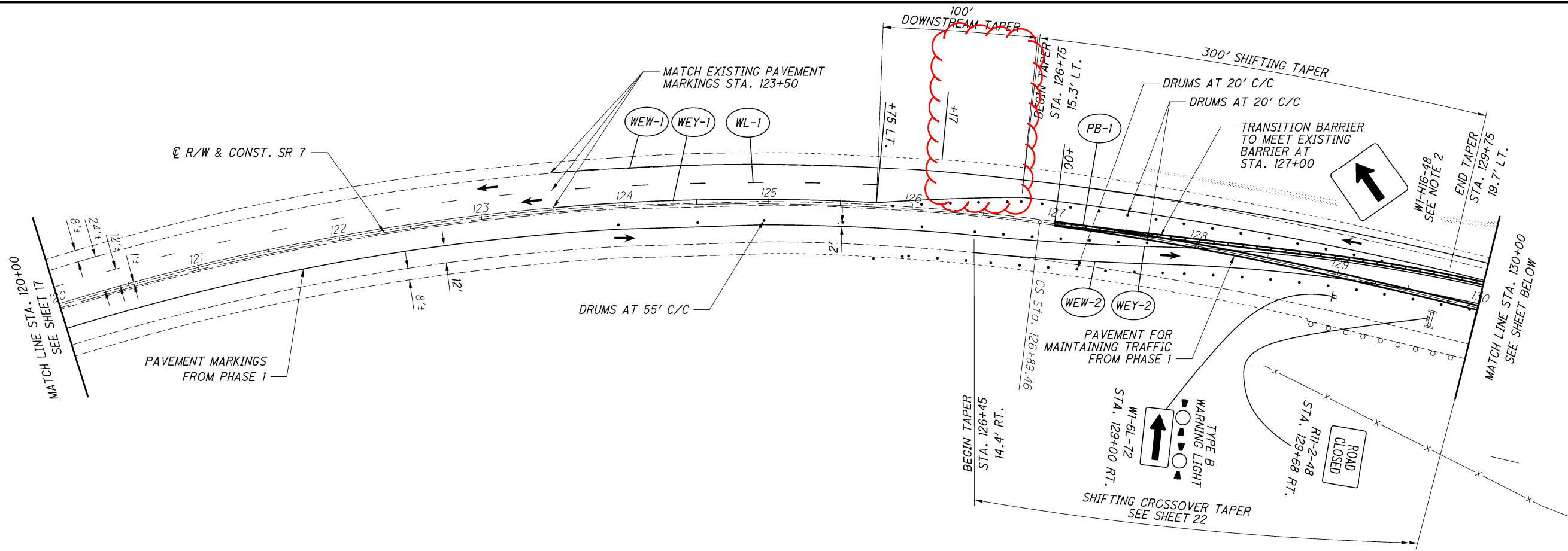
NOTE:
 1) SEE SHEET 13 FOR LEGEND.
 2) PLACE ADDITIONAL W1-H16-48 SIGNS EVERY 100' THROUGHOUT THE LENGTH OF THE SHIFITNG TAPER.
 3) END TAPER AT STA 153+18.00 15.0' LT.



**MAINTENANCE OF TRAFFIC - SR 7
 PHASE 1 STA. 140+00 TO 160+00**

JEF-7-(20.54)(20.82)

P:\AKron-CHA\Project\TOH00T20_PEO\Drawings\07648\Design\07648_Sheets\07648_MP022.dgn_Sheet 5/3/2021 11:43:27 AM djozity



NOTE:
 1) SEE SHEET 13 FOR LEGEND.
 2) PLACE ADDITIONAL W1-H16-48 SIGNS EVERY 100' THROUGHOUT THE LENGTH OF THE SHIFTING TAPER.

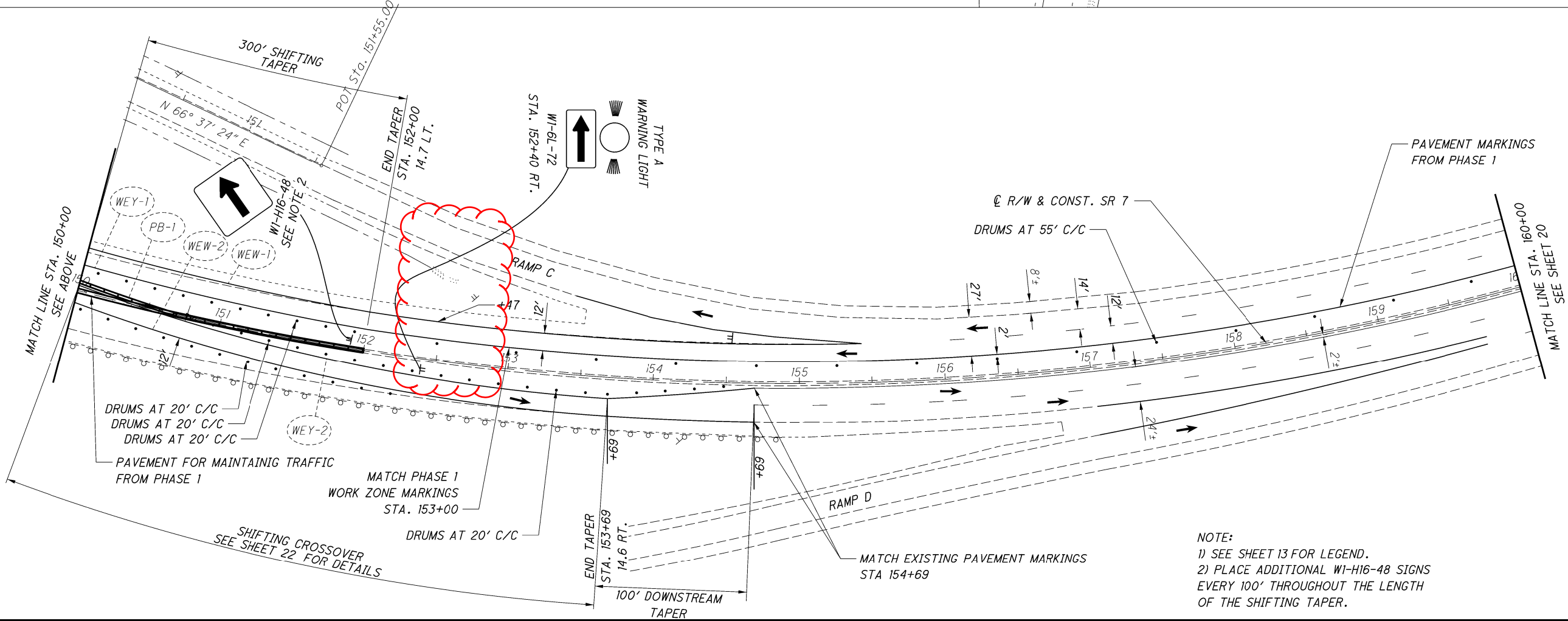
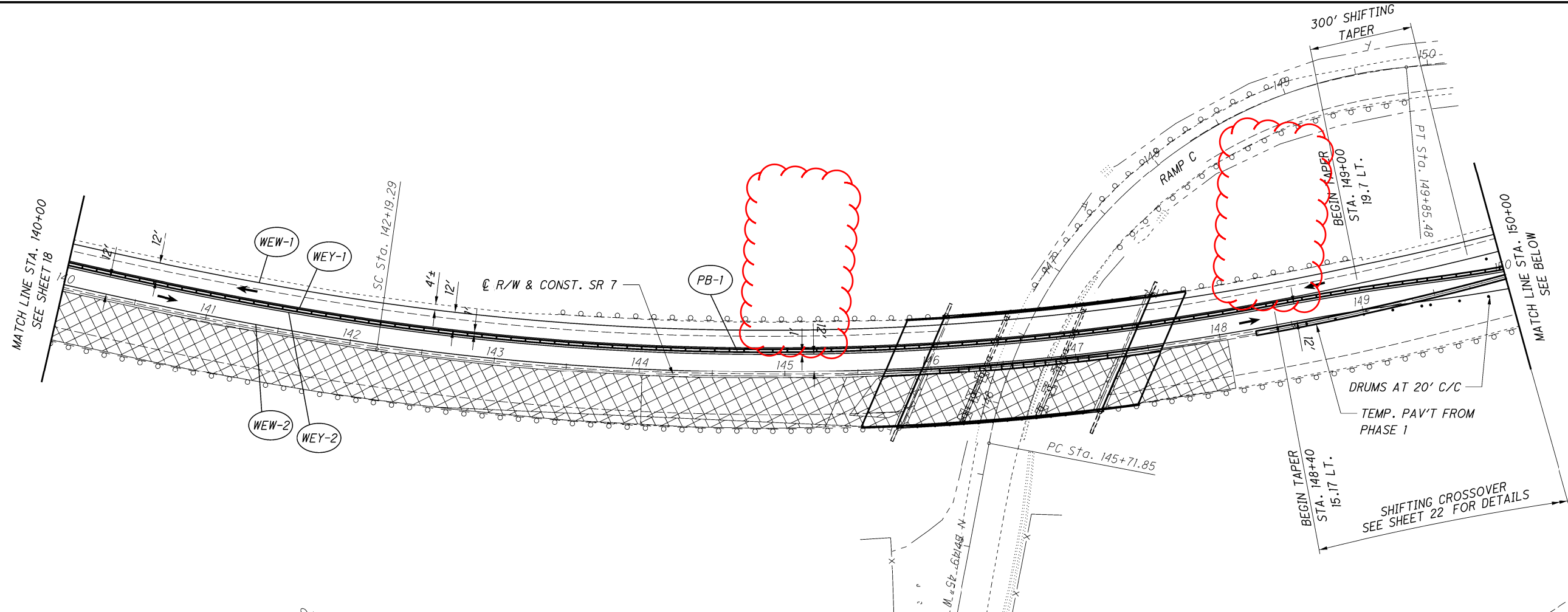


CALCULATED
 AJP
 CHECKED
 DRJ

**MAINTENANCE OF TRAFFIC - SR-7
 PHASE 2 STA. 120+00 TO STA. 140+00**

JEF-7-(20.54)(20.82)

P:\AKron-CH\Project\TOH00T20_PEO\Drawings\07648_Design\DOT\Sheets\07648_MP023.dgn_Sheet 5/3/2021 11:49:02 AM djozity



NOTE:
 1) SEE SHEET 13 FOR LEGEND.
 2) PLACE ADDITIONAL WI-H16-48 SIGNS EVERY 100' THROUGHOUT THE LENGTH OF THE SHIFTING TAPER.



MAINTENANCE OF TRAFFIC - OH-7
 PHASE 2 STA. 140+00 TO STA. 160+00

JEF-7-(20.54)(20.82)

19
98

CALCULATED
 AJP
 CHECKED
 DRJ

C:\Users\sgault\OneDrive - ARCADIS\Desk\top\JEFT\107648_GG003.dgn Sheet 5/4/2021 9:22:54 AM sgault

SHEET NUM.											PART.	ITEM	ITEM	GRAND	UNIT	DESCRIPTION	SEE SHEET NO.
7	8	9	10	12	70						01/NHS/BR	EXT	TOTAL				
															STRUCTURE REPAIR (JEF-007-2084) CONT.		
					433						433	516	13900	433	SF	2" PREFORMED EXPANSION JOINT FILLER	
					226						226	516	14020	226	FT	SEMI-INTEGRAL ABUTMENT EXPANSION JOINT SEAL	
					20						20	516	44101	20	EACH	ELASTOMERIC BEARING WITH INTERNAL LAMINATES AND LOAD PLATE (NEOPRENE), AS PER PLAN (13"X20"X2.654") (ABUTMENTS)	84
					20						20	516	44101	20	EACH	ELASTOMERIC BEARING WITH INTERNAL LAMINATES AND LOAD PLATE (NEOPRENE), AS PER PLAN (13"X20"X2.654") (PIERS)	84
					LS						LS	516	47001	LS		JACKING AND TEMPORARY SUPPORT OF SUPERSTRUCTURE, AS PER PLAN	68
					5						5	518	12201	5	EACH	SCUPPERS, INCLUDING SUPPORTS, AS PER PLAN	68
					35						35	518	21200	35	CY	POROUS BACKFILL WITH GEOTEXTILE FABRIC	
					1,445						1,445	SPECIAL	51900100	1,445	SF	COMPOSITE FIBER WRAP SYSTEM (SEE PROPOSAL NOTE)	69
					62						62	519	11101	62	SF	PATCHING CONCRETE STRUCTURE, AS PER PLAN	68
					2						2	SPECIAL	51912610	2	FT	CONCRETE REPAIR BY EPOXY INJECTION INCLUDING SURFACE PREPARATION	68
					406						406	526	25010	406	SY	REINFORCED CONCRETE APPROACH SLABS WITH QC/QA (T=15")	
					167						167	526	90010	167	FT	TYPE A INSTALLATION	
					245						245	601	21150	245	CY	SLOPE PROTECTION, MISC. REGRADING EXISTING CRUSHED AGGREGATE SLOPE PROTECTION	69
					65						65	846	00110	65	CF	POLYMER MODIFIED ASPHALT EXPANSION JOINT SYSTEM	
																MAINTENANCE OF TRAFFIC	
	160										160	614	11110	160	hour	LAW ENFORCEMENT OFFICER WITH PATROL CAR FOR ASSISTANCE	
	3,250										3,250	614	11630	3,250	FT	INCREASED BARRIER DELINEATION	
				3							3	614	12380	3	EACH	WORK ZONE IMPACT ATTENUATOR, 24" WIDE HAZARD (UNIDIRECTIONAL)	
	12										12	614	12484	12	EACH	WORK ZONE INCREASED PENALTIES SIGN	
			2								2	614	12756	2	EACH	WORK ZONE Crossover LIGHTING SYSTEM	
150											150	614	13000	150	CY	ASPHALT CONCRETE FOR MAINTAINING TRAFFIC	
	314										314	614	13310	314	EACH	BARRIER REFLECTOR, TYPE 1, ONE-WAY	
65											65	614	13312	65	EACH	BARRIER REFLECTOR, TYPE 2, ONE-WAY	
65	314										379	614	13350	379	EACH	OBJECT MARKER, ONE WAY	
		12									12	614	18601	12	SNMT	PORTABLE CHANGEABLE MESSAGE SIGN, AS PER PLAN	9
		0.05		0.05							0.1	614	20056	0.1	MILE	WORK ZONE LANE LINE, CLASS I, 6", 807 PAINT	
		5.1		5.11							10.21	614	22056	10.21	MILE	WORK ZONE EDGE LINE, CLASS I, 6", 807 PAINT	
		1,350		1,350							2,700	614	24100	2,700	FT	WORK ZONE DOTTED LINE, CLASS I, 4", 807 PAINT	
LS											LS	615	10000	LS		ROADS FOR MAINTAINING TRAFFIC	
					242						242	615	20000	242	SY	PAVEMENT FOR MAINTAINING TRAFFIC, CLASS A	
50			25								75	616	10000	75	MGAL	WATER	
				7,806							7,806	622	41100	7,806	FT	PORTABLE BARRIER, UNANCHORED	
				5,100							5,100	622	80001	5,100	FT	GLARE SCREEN, AS PER PLAN	7
		36									36	808	18700	36	SNMT	DIGITAL SPEED LIMIT (DSL) SIGN ASSEMBLY	
LS											LS	614	11000	LS		INCIDENTALS	
											15	619	16010	15	MNTH	MAINTAINING TRAFFIC FIELD OFFICE, TYPE B	
											LS	623	10000	LS		CONSTRUCTION LAYOUT STAKES AND SURVEYING	
											LS	624	10000	LS		MOBILIZATION	

GENERAL SUMMARY

JEF-7-(20.54)/(20.82)