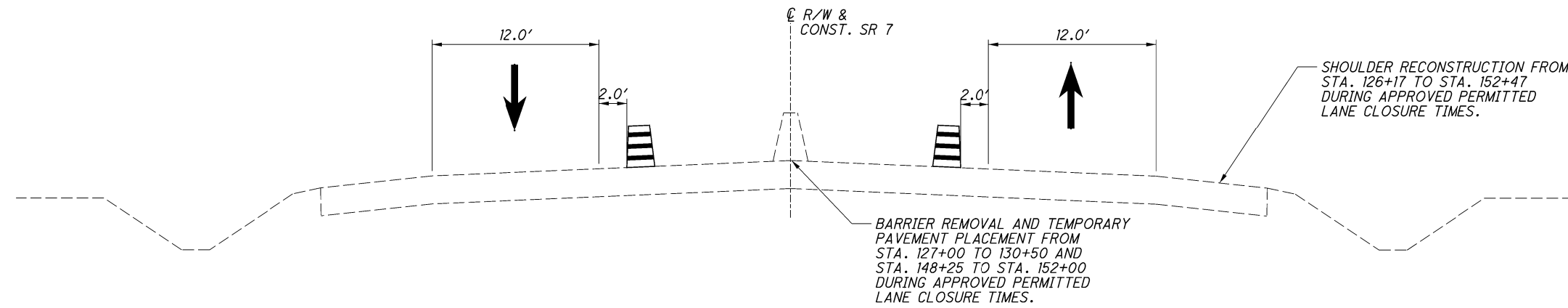
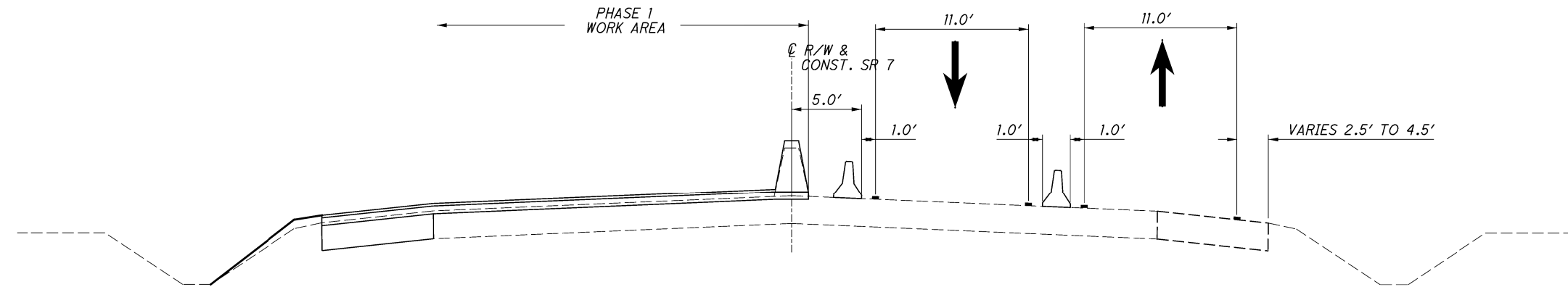


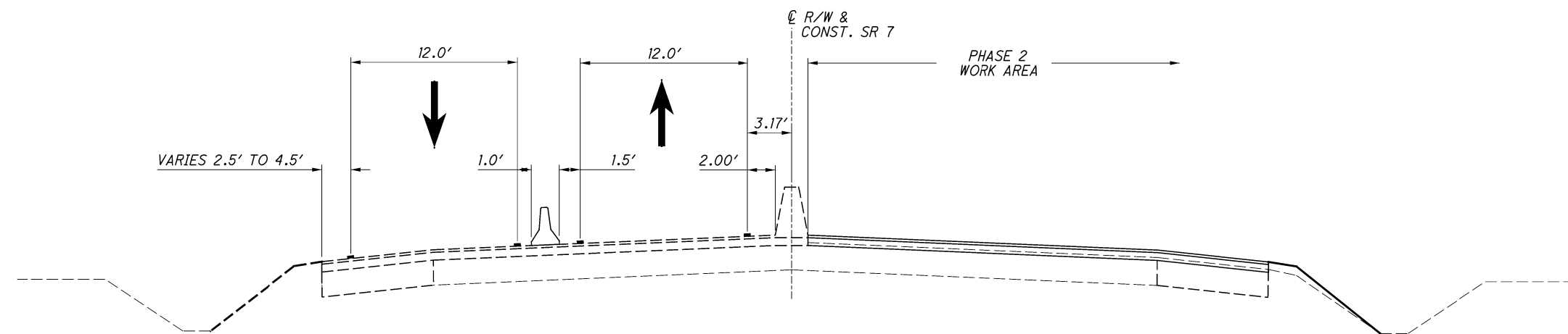
P:\AKron-CH\Project\TOH00T20_PEO\Drawing\07648\Design\001\Sheets\07648_MY001.dgn Sheet 5/3/2021 10:01:54 AM djozity



ROADWAY SECTIONS
**MAINTENANCE OF TRAFFIC
PRE-PHASE 1**



ROADWAY SECTIONS
**MAINTENANCE OF TRAFFIC
PHASE 1**



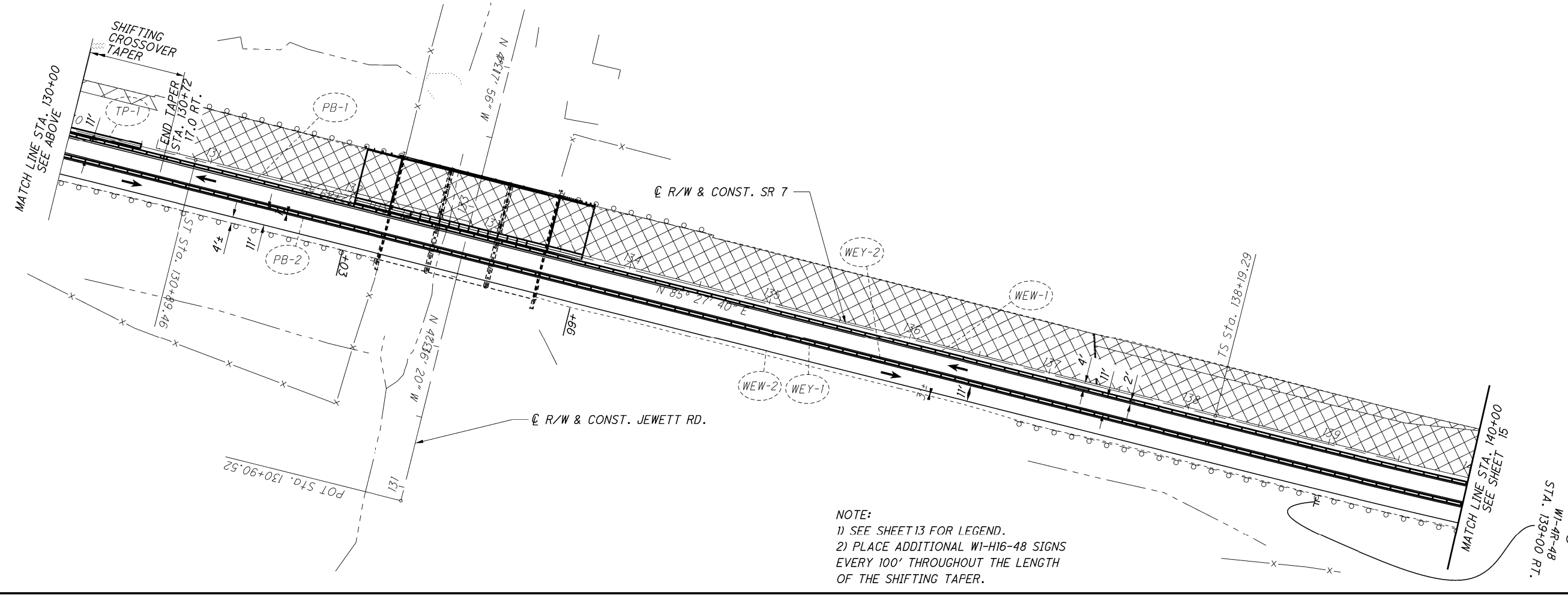
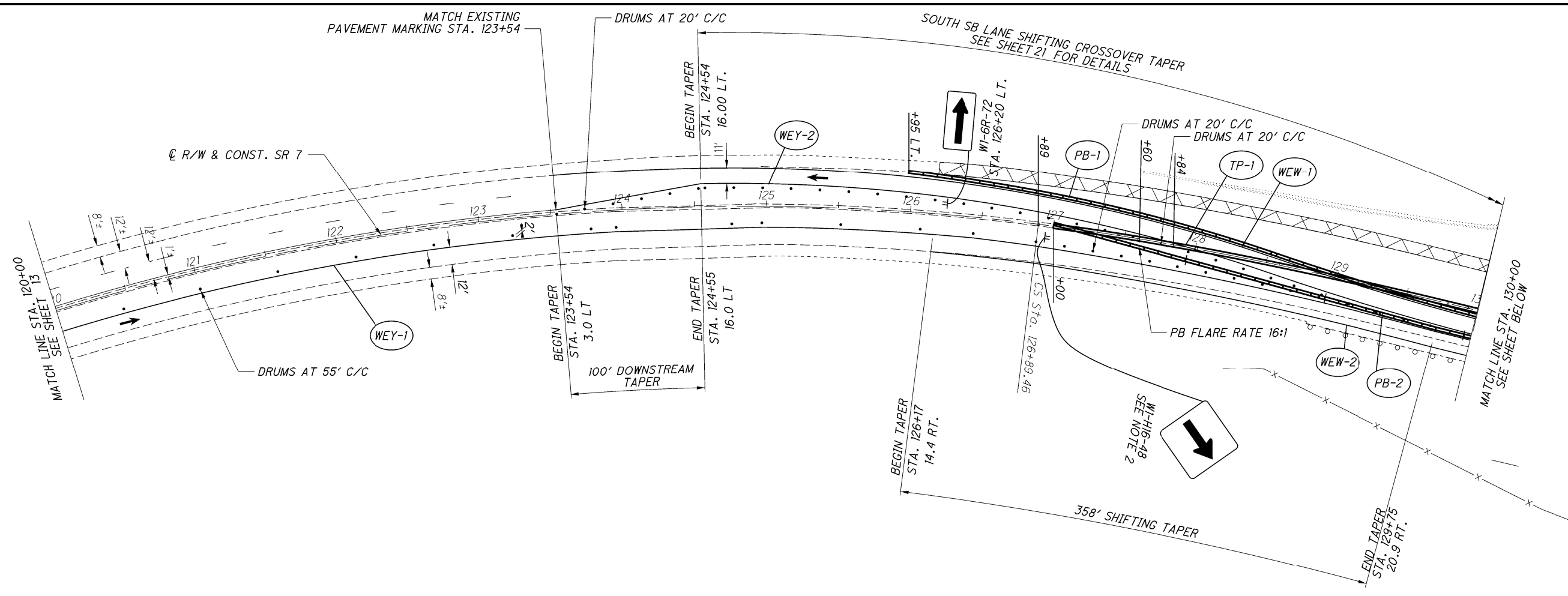
ROADWAY SECTIONS
**MAINTENANCE OF TRAFFIC
PHASE 2**

NOTE: FOR MAINTENANCE OF TRAFFIC PHASE 1 AND 2 JEF-7-20.59 STRUCTURE SECTIONS OVER JEWETT ROAD AND JEF-7-20.84 STRUCTURE SECTIONS OVER RAMP C / CR 7 REFERENCE BRIDGE SHEETS 54 AND 71 -72

MAINTENANCE OF TRAFFIC PHASED TYPICAL SECTIONS

JEF-7-(20.54)(20.82)

P:\AKron-3H\Project\TOH00T20\PE01\Drawing\07648\Design\MOT\Sheets\07648_MP012.dgn Sheet 5/3/2021 11:31:55 AM djozity



NOTE:
 1) SEE SHEET 13 FOR LEGEND.
 2) PLACE ADDITIONAL WI-H16-48 SIGNS EVERY 100' THROUGHOUT THE LENGTH OF THE SHIFTING TAPER.

CALCULATED
 AJP
 CHECKED
 DRJ

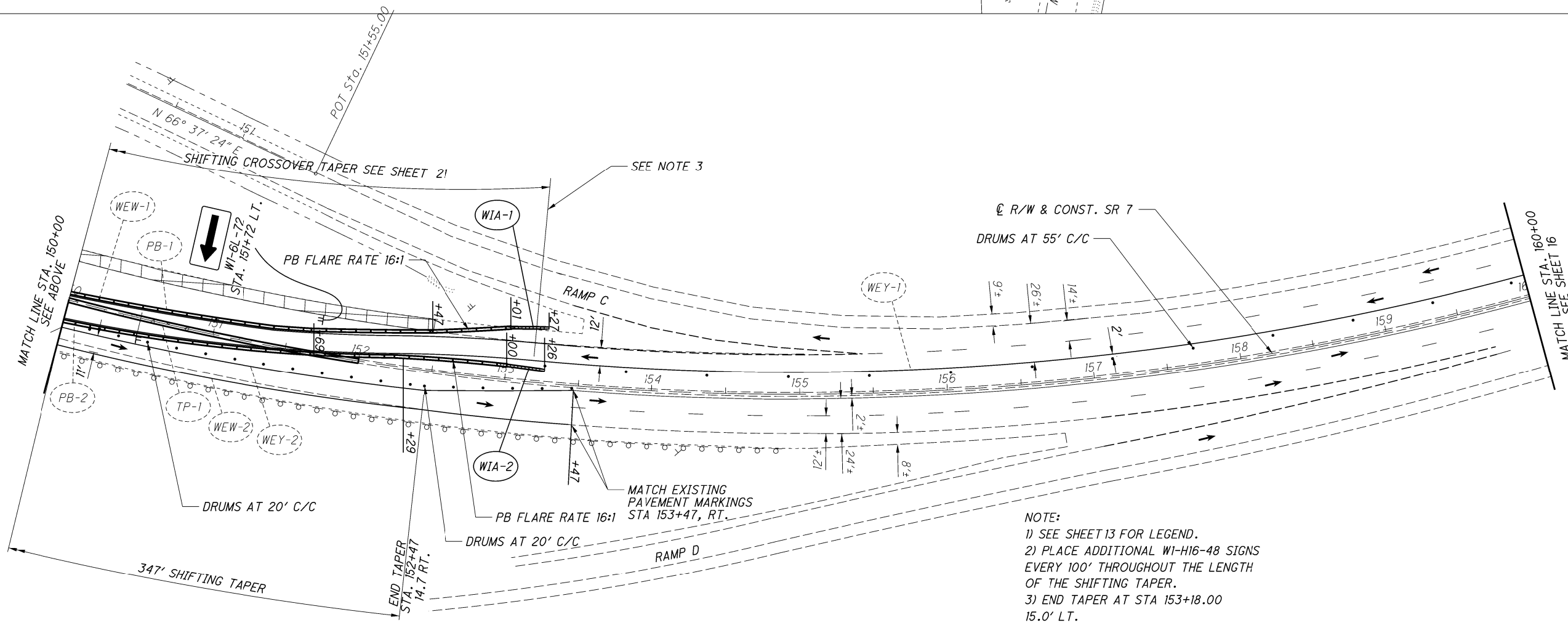
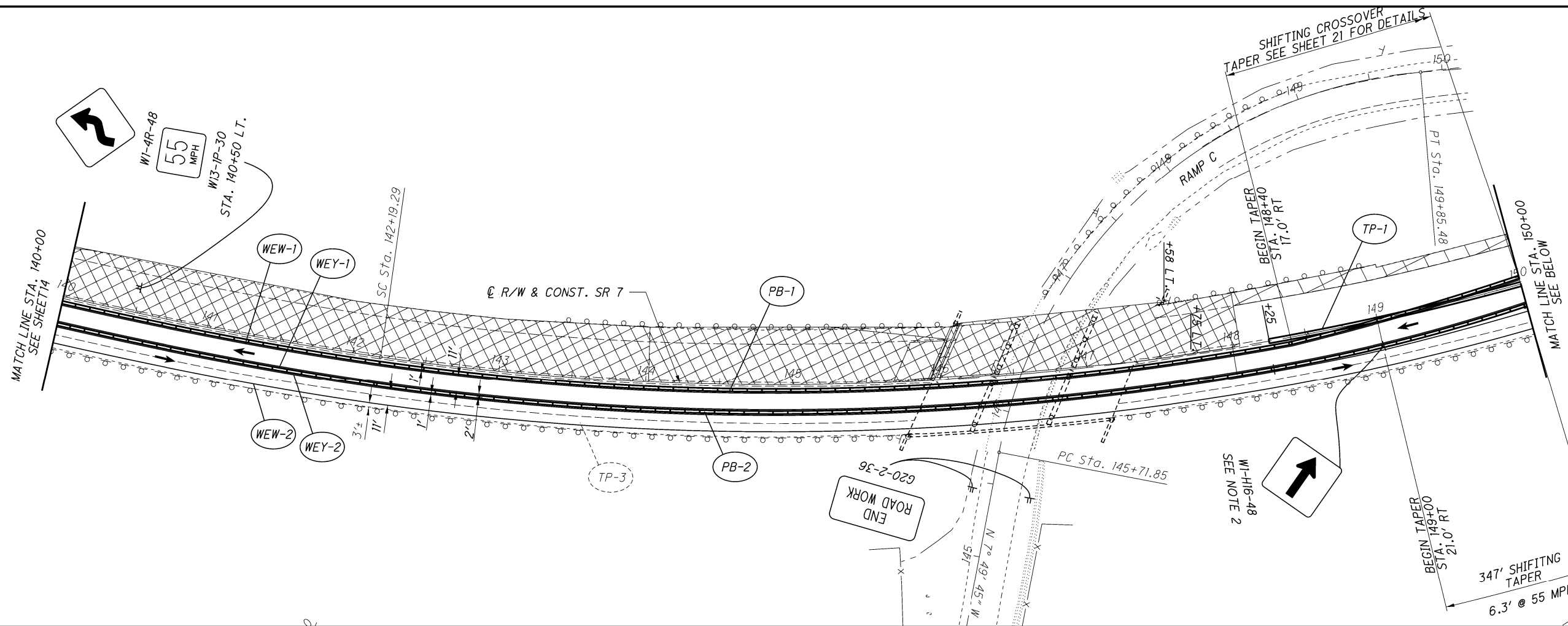
0 20 40 80
 HORIZONTAL
 SCALE IN FEET

**MAINTENANCE OF TRAFFIC - SR 7
 PHASE 1 STA. 120+00 TO STA. 140+00**

JEF-7-(20.54)(20.82)

14
 98

P:\AKron-CH\Project\TOH00T20_PEO\Drawings\07648_Design\MOT\Sheets\07648_MP013.dgn Sheet 5/3/2021 11:31:49 AM djozity



NOTE:
 1) SEE SHEET 13 FOR LEGEND.
 2) PLACE ADDITIONAL W1-H16-48 SIGNS EVERY 100' THROUGHOUT THE LENGTH OF THE SHIFTING TAPER.
 3) END TAPER AT STA 153+18.00 15.0' LT.

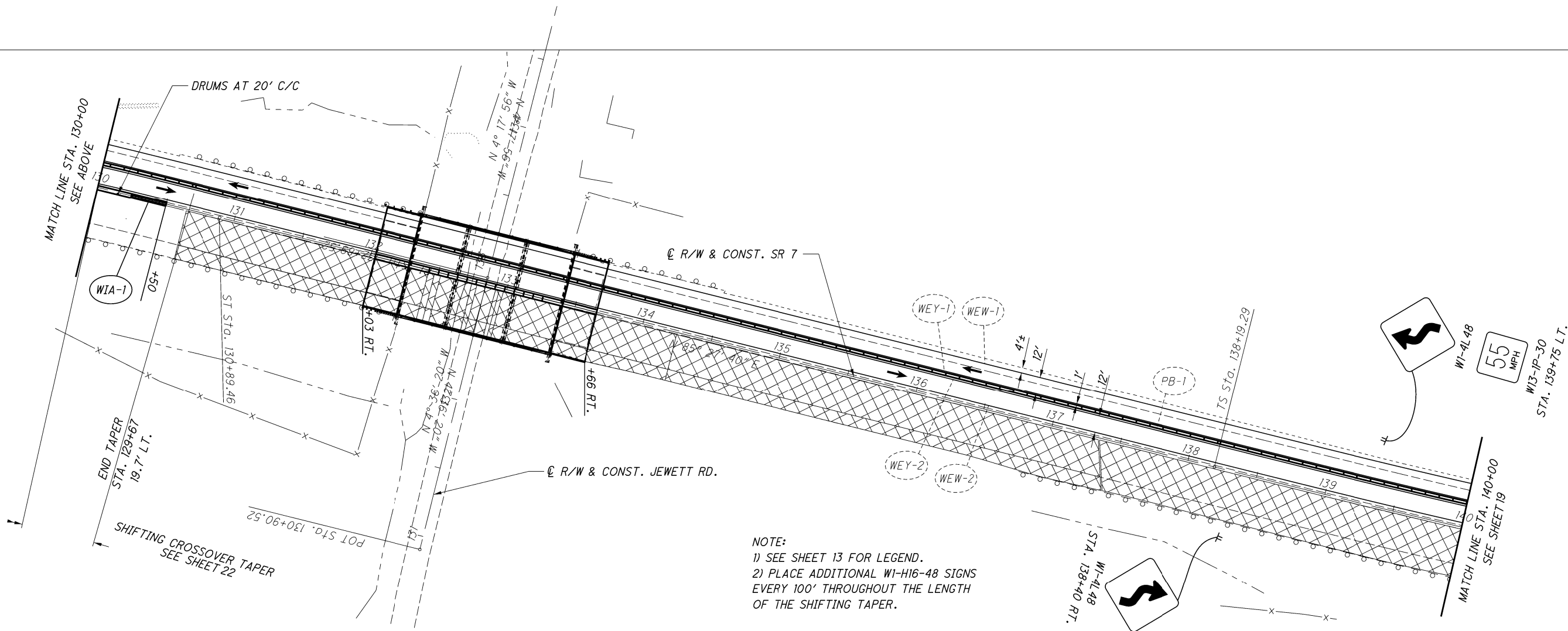
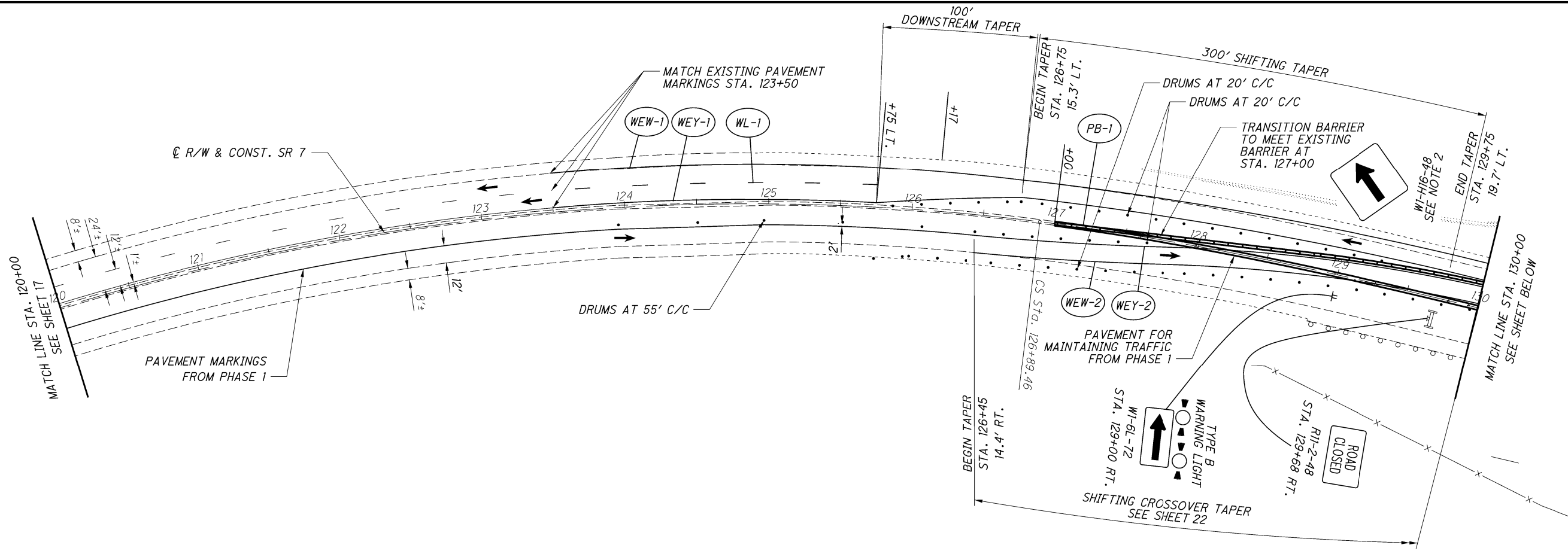
CALCULATED
 AJP
 CHECKED
 DRJ

0 20 40 80
 HORIZONTAL
 SCALE IN FEET

**MAINTENANCE OF TRAFFIC - SR 7
 PHASE 1 STA. 140+00 TO 160+00**

JEF-7-(20.54)(20.82)

P:\AKron-CH\Project\TOH00T20_PEO\Drawings\07648\Design\07648_MPO22.dgn_Sheet 5/3/2021 11:43:27 AM djozity



NOTE:
 1) SEE SHEET 13 FOR LEGEND.
 2) PLACE ADDITIONAL W1-H16-48 SIGNS EVERY 100' THROUGHOUT THE LENGTH OF THE SHIFTING TAPER.

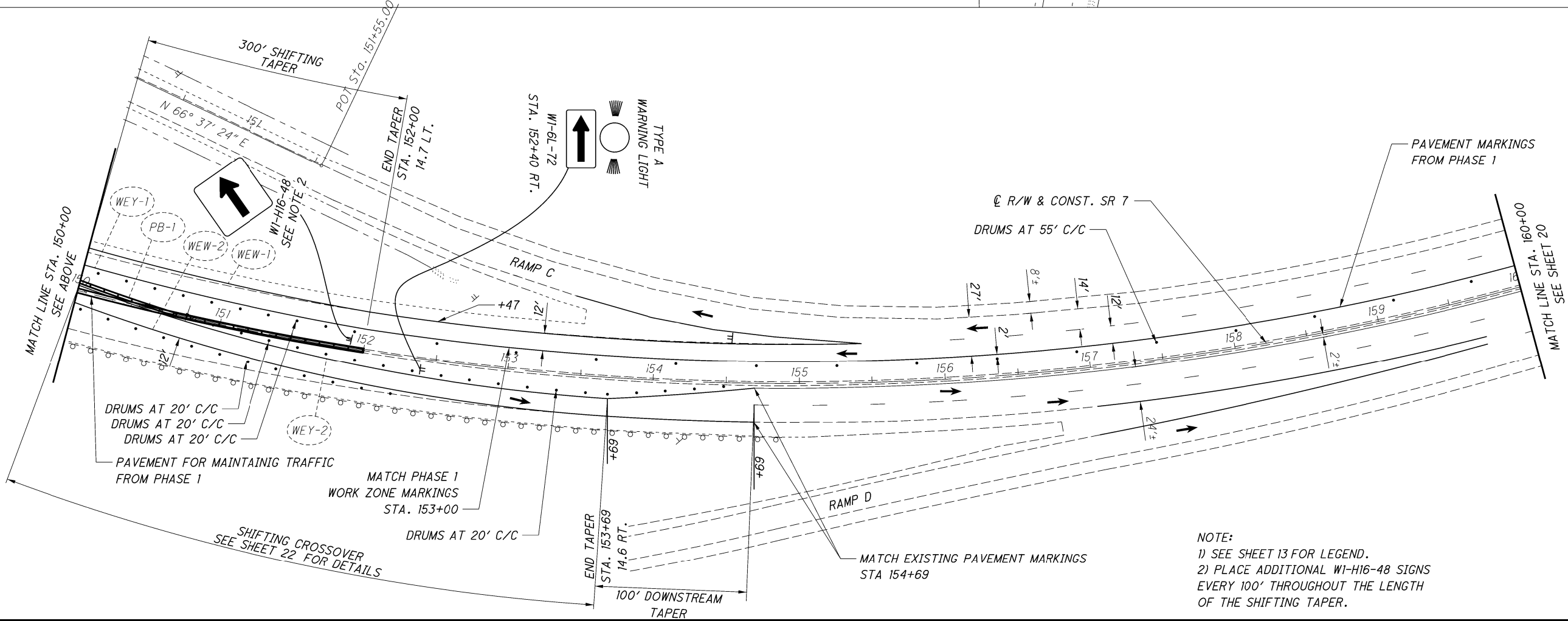
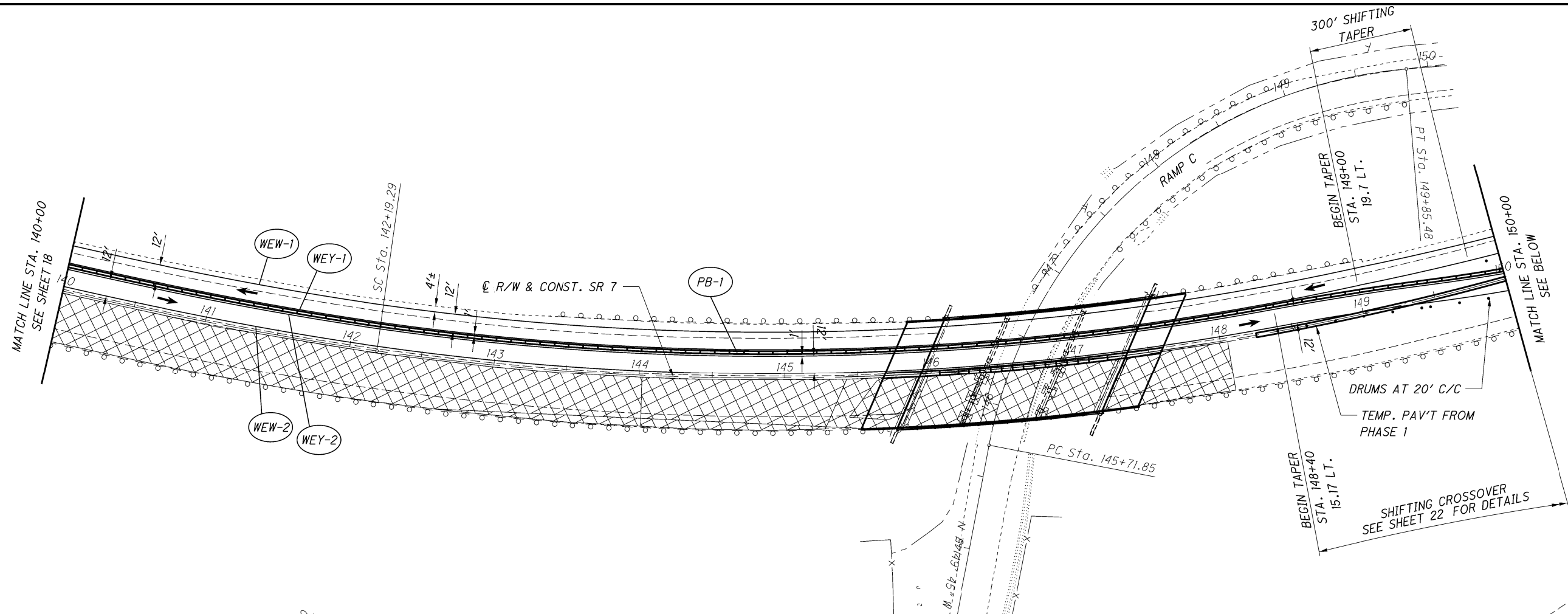


CALCULATED
 AJP
 CHECKED
 DRJ

**MAINTENANCE OF TRAFFIC - SR-7
 PHASE 2 STA. 120+00 TO STA. 140+00**

JEF-7-(20.54)(20.82)

P:\AKron-CH\Project\TOH00T20_PEO\Drawings\07648_Design\MOT\Sheets\07648_MP023.dgn_Sheet_5/3/2021 11:49:02 AM djozity



NOTE:
 1) SEE SHEET 13 FOR LEGEND.
 2) PLACE ADDITIONAL WI-H16-48 SIGNS EVERY 100' THROUGHOUT THE LENGTH OF THE SHIFTING TAPER.

CALCULATED
 AJP
 CHECKED
 DRJ

0 40 80
 HORIZONTAL
 SCALE IN FEET

**MAINTENANCE OF TRAFFIC - OH-7
 PHASE 2 STA. 140+00 TO STA. 160+00**

JEF-7-(20.54)(20.82)

