

PROJECT: JEF-7-13.95		DRILLING FIRM / OPERATOR: ODOT / MCINTOSH				DRILL RIG: CME 75 TRUCK		STATION / OFFSET: 727+45.59' RT.				EXPLORATION ID								
TYPE: RETAINING WALL		SAMPLING FIRM / LOGGER: ODOT / LEWIS				HAMMER: CME AUTOMATIC		ALIGNMENT: CL SR 7				B-001-0-21								
PID: 113999 SFN: 1014501 (P)		DRILLING METHOD: 3.25" HSA / NQ2				CALIBRATION DATE: 4/15/20		ELEVATION: 754.9 (ft) EOB: 86.0 ft.				PAGE								
START: 5/18/21 END: 5/20/21		SAMPLING METHOD: SPT / NQ2				ENERGY RATIO (%): 90*		LAT / LONG: 40.328145, -80.605681				1 OF 2								
MATERIAL DESCRIPTION AND NOTES		ELEV.	DEPTHS		SPT/ RQD	N ₆₀	REC (%)	SAMPLE ID	HP (tsf)	GRADATION (%)					ATTERBERG				ODOT CLASS (GI)	HOLE SEALED
		754.9								GR	CS	FS	SI	CL	LL	PL	PI	WC		
ASPHALT (8") & BASE (4")																				
		753.9																		
MEDIUM DENSE, GRAY AND BLACK, GRAVEL AND STONE FRAGMENTS, SOME SAND, TRACE SILT, TRACE CLAY, MOIST			1																	
			2		4	6	18	44	SS-1	-	57	18	14	8	3	NP	NP	NP	16	A-1-a (0)
			3			6														
@3.5'; BLACK AND BROWN			4		2	3	11	39	SS-2	-	-	-	-	-	-	-	-	13	A-1-a (V)	
			5			4														
		748.9																		
MEDIUM DENSE, BROWN, GRAVEL AND STONE FRAGMENTS WITH SAND, TRACE SILT, TRACE CLAY, DAMP			6		5	2	17	33	SS-3	-	58	8	23	8	3	NP	NP	NP	8	A-1-b (0)
			7			9														
		746.4																		
MEDIUM DENSE, BROWN AND GRAY, STONE FRAGMENTS WITH SAND AND SILT, TRACE CLAY, DAMP			8																	
			9		3	4	14	17	SS-4	-	-	-	-	-	-	-	-	9	A-2-4 (V)	
			10			5														
@11.0'; LOOSE			11		3	3	8	44	SS-5	-	48	11	14	17	10	25	17	8	11	A-2-4 (0)
			12			2														
@13.5' - 15.0'; SPOON BLOCKED BY STONE FRAGMENTS			13																	
			14		5	4	14	11	SS-6	-	-	-	-	-	-	-	-	7	A-2-4 (V)	
			15			5														
		738.9																		
VERY STIFF, BROWN, SANDY SILT, "AND" STONE FRAGMENTS, LITTLE CLAY, DAMP			16		2	7	26	67	SS-7	2.00	37	12	15	21	15	27	18	9	11	A-4a (0)
			17			10														
@18.5'; STIFF			18																	
			19		2	3	9	72	SS-8	1.50	-	-	-	-	-	-	-	17	A-4a (V)	
			20			3														
@21.0'; VERY STIFF			21		6	5	24	78	SS-9	2.00	-	-	-	-	-	-	-	11	A-4a (V)	
			22			11														
		731.4																		
MEDIUM DENSE, BROWN AND GRAY, STONE FRAGMENTS WITH SAND AND SILT, TRACE CLAY, DAMP			23																	
			24		4	4	11	6	SS-10	-	-	-	-	-	-	-	-	9	A-2-4 (V)	
			25			3														
			26		7	6	23	44	SS-11	-	56	10	13	13	8	24	17	7	7	A-2-4 (0)
			27			9														
		726.4																		
STIFF, BROWN, SILT AND CLAY, SOME SAND, SOME STONE FRAGMENTS, MOIST			28																	
			29		1	3	11	78	SS-12	1.50	21	7	15	30	27	31	17	14	18	A-6a (6)
			30			4														
			31		4	5	20	67	SS-13	1.50	-	-	-	-	-	-	-	18	A-6a (V)	
			32			8														
@33.5'; VERY STIFF			33																	
			34		2	6	24	39	SS-14	2.50	-	-	-	-	-	-	-	14	A-6a (V)	
			35			10														
		718.9																		
MEDIUM DENSE, BROWN, STONE FRAGMENTS WITH SAND AND SILT, LITTLE CLAY, DAMP			36		4	6	18	44	SS-15	-	-	-	-	-	-	-	-	14	A-2-4 (V)	
			37			6														
			38																	
			39		2	5	20	56	SS-16	-	45	9	15	19	12	26	18	8	14	A-2-4 (0)
			40			8														
@41.0'; DENSE			41		6	11	36	56	SS-17	-	-	-	-	-	-	-	-	12	A-2-4 (V)	
			42			13														
@43.5'; MEDIUM DENSE			43																	
			44		5	8	26	78	SS-18	-	-	-	-	-	-	-	-	14	A-2-4 (V)	
			45			9														
@46.0'; DENSE			46		11	10	32	67	SS-19	-	48	11	12	17	12	26	17	9	10	A-2-4 (0)
			47			11														
		706.4																		
DENSE, BROWN AND GRAY, STONE FRAGMENTS WITH SAND, LITTLE SILT, TRACE CLAY, DAMP			48																	
			49		10	15	39	67	SS-20	-	51	10	21	11	7	19	16	3	8	A-1-b (0)
			50																	
			51		10	11	35	56	SS-21	-	-	-	-	-	-	-	-	6	A-1-b (V)	
			52			12														
			53																	
			54		8	14	36	44	SS-22	-	-	-	-	-	-	-	-	8	A-1-b (V)	
			55			10														
@56.0' - 61.5'; ENCOUNTERED BOULDERS/COBBLES			56		63		67	SS-23	-	-	-	-	-	-	-	-	-	4	A-1-b (V)	
@56.5' - 58.9'; LIMESTONE BOULDER γ = 166 pcf; Qu = 6,527 psi			57																	
			58																	
			59				30	NQ2-1	-	-	-	-	-	-	-	-	-	-		

PID: 113999	SFN: 1014501 (P)	PROJECT: JEF-7-13.95	STATION / OFFSET: 727+45, 59' RT.					START: 5/18/21	END: 5/20/21	PG 2 OF 2	B-001-0-21										
MATERIAL DESCRIPTION AND NOTES		ELEV.	DEPTHS		SPT/ RQD	N ₆₀	REC (%)	SAMPLE ID	HP (tsf)	GRADATION (%)					ATTERBERG			WC	ODOT CLASS (GI)	HOLE SEALED	
		694.9								GR	CS	FS	SI	CL	LL	PL	PI				
DENSE, BROWN AND GRAY, STONE FRAGMENTS WITH SAND , LITTLE SILT, TRACE CLAY, DAMP (continued)		693.4		61																	
VERY STIFF, BROWN, SILT AND CLAY , SOME SAND, LITTLE STONE FRAGMENTS, MOIST @66.0'; HARD, DAMP @68.5'; MOIST @71.0'; VERY STIFF, DAMP		681.4		62	6	9	33	28	SS-24	2.00	-	-	-	-	-	-	-	23	A-6a (V)		
				63		13															
				64	3	7	27	67	SS-25	3.00	19	6	15	32	28	32	17	15	17	A-6a (7)	
				65		11															
				66	11	12	36	78	SS-26	4.00	-	-	-	-	-	-	-	-	13	A-6a (V)	
				67		12															
				68																	
				69	5	8	30	78	SS-27	4.00	-	-	-	-	-	-	-	-	20	A-6a (V)	
				70		12															
				71																	
				72	3	6	20	89	SS-28	2.50	-	-	-	-	-	-	-	-	15	A-6a (V)	
				73		7															
DENSE, BROWN AND GRAY, STONE FRAGMENTS WITH SAND AND SILT , TRACE CLAY, DAMP		677.9		74	13	14	39	67	SS-29	-	57	15	9	12	7	23	16	7	3	A-2-4 (0)	
				75																	
				76	32		-	67	SS-30	-	-	-	-	-	-	-	-	11	A-2-4 (V)		
				77	65/3"																
SANDSTONE , DARK GRAY, MODERATELY WEATHERED, STRONG, VERY FINE TO FINE GRAINED, VERY THIN TO THIN BEDDED, ARGILLACEOUS, MICACEOUS, BLOCKY, GOOD; RQD 78%, REC 98%. @77.0'-77.5'; HIGHLY WEATHERED @77.0'; NO WATER RETURN @77.4'; CLAY SEAM @79.6' - 80.0'; γ = 159 pcf; Qu = 10,721 psi @82.0' - 82.4'; γ = 155 pcf; Qu = 10,759 psi @85.6'; CLAY SEAM		668.9	TR	78															CORE		
				79																	
				80	78		98		NQ2-2												
				81																	
				82																	
				83																	
				84	79		90		NQ2-3												
				85																	
				86																	
						EOB															

NOTES: LAT/LONG/ELEV FROM DISTRICT SURVEY GRADE INSTRUMENTS. HOLE WAS DRY PRIOR TO CORING

ABANDONMENT METHODS, MATERIALS, QUANTITIES: MIXED 150 LB. BENTONITE GROUT; 120 GAL. WATER

PROJECT: JEF-7-13.95		DRILLING FIRM / OPERATOR: ODOT / MCINTOSH		DRILL RIG: CME 75 TRUCK		STATION / OFFSET: 727+81, 152' RT.		EXPLORATION ID													
TYPE: RETAINING WALL		SAMPLING FIRM / LOGGER: ODOT / LEWIS		HAMMER: CME AUTOMATIC		ALIGNMENT: CL SR 7		B-001-1-22													
PID: 113999 SFN: 1014501 (P)		DRILLING METHOD: 3.25" HSA / NQ2		CALIBRATION DATE: 4/18/22		ELEVATION: 683.1 (ft) EOB: 40.0 ft.		PAGE													
START: 12/13/22 END: 12/13/22		SAMPLING METHOD: SPT / NQ2		ENERGY RATIO (%): 90*		LAT / LONG: 40.328309, -80.605397		1 OF 1													
MATERIAL DESCRIPTION AND NOTES		ELEV.	DEPTHS		SPT/ RQD	N ₆₀	REC (%)	SAMPLE ID	HP (tsf)	GRADATION (%)					ATTERBERG			WC	ODOT CLASS (GI)	BACK FILL	
		683.1								GR	CS	FS	SI	CL	LL	PL	PI				
BASE (18")																					
DENSE, GRAY AND BLACK, STONE FRAGMENTS , SOME SAND, LITTLE SILT, TRACE CLAY, CONTAINS SLAG, DAMP		681.6	1																		
			2		8	14	35	28	SS-1	-	66	10	10	10	4	NP	NP	NP	9	A-1-a (0)	
			3			9															
@3.5'; MEDIUM DENSE			4		7	6	23	22	SS-2	-	-	-	-	-	-	-	-	12	A-1-a (V)		
			5			9															
		677.1	6																		
MEDIUM DENSE, BLACK AND BROWN, STONE FRAGMENTS WITH SAND , LITTLE SILT, TRACE CLAY, WET			7		6	4	12	50	SS-3	-	38	25	18	11	8	NP	NP	NP	21	A-1-b (0)	
		674.6	8																		
STIFF, BROWN AND GRAY, SILT AND CLAY , SOME STONE FRAGMENTS, LITTLE SAND, MOIST			9		3	3	11	67	SS-4	2.00	25	4	14	30	27	30	18	12	19	A-6a (5)	
			10			4															
			11		3	3	11	44	SS-5	1.50	-	-	-	-	-	-	-	-	19	A-6a (V)	
		669.6	12			4															
MEDIUM STIFF, GRAY, SANDY SILT , SOME CLAY, LITTLE STONE FRAGMENTS, MOIST			13																		
			14		1	2	6	50	SS-6	1.00	16	5	14	44	21	34	24	10	31	A-4a (6)	
			15			2															
@16.0' - 17.5'; SPLITSPOON BLOCKED BY STONE FRAGMENTS			16		4	3	11	6	SS-7	-	-	-	-	-	-	-	-	4	A-4a (V)		
			17			4															
		664.6	18																		
MEDIUM STIFF, BROWN, SILT AND CLAY , SOME SAND, SOME STONE FRAGMENTS, MOIST			19		1	2	8	11	SS-8	1.00	-	-	-	-	-	-	-	22	A-6a (V)		
			20			3															
			21		6	3	15	72	SS-9	2.00	25	8	20	25	22	32	18	14	19	A-6a (4)	
@21.0'; STIFF			22			7															
		659.6	23																		
			24		5	7	27	33	SS-10	-	33	9	33	15	10	NP	NP	NP	9	A-2-4 (0)	
MEDIUM DENSE, BROWN, STONE FRAGMENTS WITH SAND AND SILT , TRACE CLAY, DAMP			25			11															
VERY STIFF, BROWN, SILT AND CLAY , SOME STONE FRAGMENTS, SOME SAND, MOIST		657.1	26		7	6	18	78	SS-11	2.50	34	9	15	25	17	30	17	13	18	A-6a (2)	
			27			6															
			28																		
@28.5'; STIFF, DAMP			29		2	4	15	39	SS-12	1.50	-	-	-	-	-	-	-	14	A-6a (V)		
			30			6															
			31																		
@30.0' - 35.0'; COLLUVIUM, ENCOUNTERED BOULDERS/COBBLES			32																		
			33																		
			34		0			18	NQ2-1											CORE	
SHALE , OLIVE BLACK, HIGHLY WEATHERED, WEAK, LAMINATED, JOINT, HIGHLY FRACTURED, NARROW, SLIGHTLY ROUGH; BLOCKY, POOR; RQD 7%, REC 87%. @36.3' - 39.2'; S _c = 1,080 psi		648.1	35																		
			36																		
			37																		
			38		7			87	NQ2-2											CORE	
		643.1	39																		
			40																		
			EOB																		
NOTES: HOLE DRY BEFORE CORING. LAT/LONG/ELEV FROM DISTRICT SURVEY GRADE INSTRUMENTS. S _c = POINT LOAD STRENGTH VALUES AS PER ASTM D 5731.																					
ABANDONMENT METHODS, MATERIALS, QUANTITIES: AUGER CUTTINGS MIXED WITH 100 LB. BENTONITE CHIPS																					

PROJECT: JEF-7-13.95		DRILLING FIRM / OPERATOR: ODOT / MCINTOSH		DRILL RIG: CME 75 TRUCK		STATION / OFFSET: 727+92, 59' RT.		EXPLORATION ID													
TYPE: RETAINING WALL		SAMPLING FIRM / LOGGER: ODOT / LEWIS		HAMMER: CME AUTOMATIC		ALIGNMENT: CL SR 7		B-002-0-21													
PID: 113999 SFN: 1014501 (P)		DRILLING METHOD: 3.25" HSA / NQ2		CALIBRATION DATE: 4/15/20		ELEVATION: 756.7 (ft) EOB: 56.5 ft.		PAGE													
START: 5/24/21 END: 5/25/21		SAMPLING METHOD: SPT / NQ2		ENERGY RATIO (%): 90*		LAT / LONG: 40.328269, -80.605728		1 OF 1													
MATERIAL DESCRIPTION AND NOTES		ELEV.	DEPTHS		SPT/ RQD	N ₆₀	REC (%)	SAMPLE ID	HP (tsf)	GRADATION (%)					ATTERBERG			WC	ODOT CLASS (GI)	BACK FILL	
ASPHALT (8") & BASE (4")		756.7								GR	CS	FS	SI	CL	LL	PL	PI				
		755.7	1																		
MEDIUM DENSE, GRAY AND BLACK, GRAVEL AND STONE FRAGMENTS WITH SAND, LITTLE SILT, TRACE CLAY, MOIST			2		3	4	12	33	SS-1	-	49	15	21	11	4	NP	NP	NP	13	A-1-b (0)	
			3			4															
@3.5'; BROWN AND GRAY, DAMP			4		2	5	17	33	SS-2	-	-	-	-	-	-	-	-	-	8	A-1-b (V)	
			5			6															
@6.0'; LOOSE			6		4																
			7		2	2	6	22	SS-3	-	-	-	-	-	-	-	-	-	9	A-1-b (V)	
			8																		
MEDIUM DENSE, BROWN AND GRAY, STONE FRAGMENTS WITH SAND AND SILT, TRACE CLAY, DAMP		748.2	9		10	6	15	17	SS-4	-	-	-	-	-	-	-	-	-	11	A-2-4 (V)	
			10			4															
			11		8	6	20	67	SS-5	-	51	13	9	18	9	25	18	7	8	A-2-4 (0)	
			12			7															
@13.5'; LOOSE			13																		
			14		7	4	9	56	SS-6	-	-	-	-	-	-	-	-	-	9	A-2-4 (V)	
			15			2															
			16		3																
			17			3	9	56	SS-7	-	-	-	-	-	-	-	-	-	13	A-2-4 (V)	
			18																		
@18.5'; MEDIUM DENSE, BROWN			19		4	6	20	67	SS-8	-	65	9	7	12	7	27	19	8	8	A-2-4 (0)	
			20			7															
			21		4																
			22			4	14	67	SS-9	-	54	11	11	14	10	28	20	8	11	A-2-4 (0)	
			23			5															
			24		3	3	11	78	SS-10	-	-	-	-	-	-	-	-	-	13	A-2-4 (V)	
			25			4															
			26		4																
			27			4	15	89	SS-11	-	-	-	-	-	-	-	-	-	16	A-2-4 (V)	
			28			6															
VERY STIFF, BROWN, SILT AND CLAY, SOME STONE FRAGMENTS, SOME SAND, DAMP		728.2	29		7	6	20	67	SS-12	2.50	33	10	12	27	18	32	21	11	10	A-6a (2)	
			30			7															
@31.0'; STIFF			31		5																
			32			7	20	67	SS-13	1.50	-	-	-	-	-	-	-	-	10	A-6a (V)	
			33			6															
STIFF, BROWN, STONE FRAGMENTS WITH SAND AND SILT, LITTLE CLAY, DAMP		723.2	34		3	4	14	78	SS-14	-	45	13	10	21	11	28	19	9	15	A-2-4 (0)	
			35			5															
			36		4																
			37			4	15	89	SS-15	-	-	-	-	-	-	-	-	-	21	A-2-4 (V)	
			38			6															
SANDSTONE, BROWN, HIGHLY WEATHERED, WEAK TO SLIGHTLY STRONG, VERY FINE GRAINED TO FINE GRAINED.		718.2	39		20	17	68	83	SS-16	-	-	-	-	-	-	-	-	-	6	Rock (V)	
			40		28																
			41		17																
			42			13	44	89	SS-17	-	-	-	-	-	-	-	-	-	4	Rock (V)	
			43			16															
@43.5'; GRAY AND BROWN, MODERATELY WEATHERED.			44		66		-	100	SS-18	-	-	-	-	-	-	-	-	-	4	Rock (V)	
			45																		
			46		70/3"		-	100	SS-19	-	-	-	-	-	-	-	-	-	4	Rock (V)	
SANDSTONE, DARK GRAY, MODERATELY WEATHERED, MODERATELY STRONG TO STRONG, VERY FINE TO FINE GRAINED, VERY THIN TO THIN BEDDED, ARGILLACEOUS, MICACEOUS, BLOCKY, POOR TO FAIR; RQD 22%, REC 97%.		710.2	47																		
@48.7' - 49.2'; HIGHLY WEATHERED			48																		
@49.1' - 50.0'; Sc = 6,919 psi			49		0			95	NQ2-1											CORE	
			50																		
			51																		
@53.0' - 53.3'; HIGHLY WEATHERED WITH CLAY SEAM			52																		
			53																		
			54		43			98	NQ2-2											CORE	
@55.4' - 55.8'; γ = 164 pcf; Qu = 9,051 psi			55																		
			56																		
		700.2	EOB																		
NOTES: LAT/LONG/ELEV FROM DISTRICT SURVEY GRADE INSTRUMENTS. HOLE WAS DRY PRIOR TO CORING																					
ABANDONMENT METHODS, MATERIALS, QUANTITIES: AUGER CUTTINGS MIXED WITH 100 LB. BENTONITE CHIPS																					

STANDARD ODOT SOIL BORING LOG (11 X 17) - OH DOT.GDT - 7/22/24 12:58 - X:\GINT\PROJECTS\2021 COMPLETE\1600860.GPJ

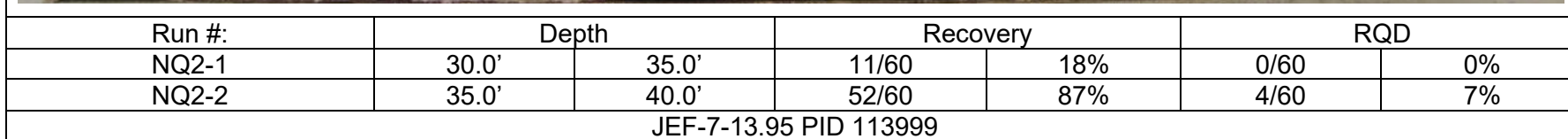
BR: NQ2-2
77.0'

82.0'

ER: NQ2-3
86.0'

Run #:	Depth		Recovery		RQD	
NQ2-2	77.0'	82.0'	59/60	98%	47/60	78%
NQ2-3	82.0'	86.0'	43/48	90%	38/48	79%
JEF-7-13.95 PID 113999						

B-001-1-22



BR: NQ2-1
46.5'

51.5'

ER: NQ2-2
56.5'

Run #:	Depth		Recovery		RQD	
NQ2-1	46.5'	51.5'	57/60	95%	0/60	0%
NQ2-2	51.5'	56.5'	59/60	98%	26/60	43%
JEF-7-13.95 PID 113999						

STATE OF OHIO
DEPARTMENT OF HIGHWAYS
TESTING LABORATORY

LOG OF BORING

CO. RT. NO. SEC. 237-7-13.68 BRIDGE NO.

LOCATION: T.M. 2 STA. 726+50 OFFSET 0.00 FED. NO.

ELEV.	DEPTH	NO. BLOWS	SAMPLE NO.	DESCRIPTION
750.0	0			
	2			Fill Material
	4			
	6			Brown Silty clay
	8			
	10			Weathered Brown shale, very badly broken, with silty.
740.0	12			
	14			Weathered Brown Shale, Very Badly Broken, Soft, and Crumbly.
735.0	16			
734.0	18			
	20			Shale, brown, silty, firm,
	22			
	24			
	26			
	28			
	30			
	32			
	34			
	36			

STATE OF OHIO
DEPARTMENT OF HIGHWAYS
TESTING LABORATORY

LOG OF BORING

CO. RT. NO. SEC. 103-7-11-6E BRIDGE NO.
 STA. 723+50 to 724+00
 LOCATION: TH 11 STA. 723+50 OFFSET 40' E PED. NO.

ELEV.	DEPTH	NO. BLOWS	SAMPLE NO.	DESCRIPTION
756.2	0			
	2			
	4			
751.7	6	4/5	6622	Brown Silty Sandy Gravel & Stone Fragts.
	8			
746.7	10	17/10	6623	Brown Silty Gravel & Shale Fragts.
	12			
	14			
742.7	16	5/13	6624	Brown Shale & Stone Fragments
	18			
	20			
	22			
	24			
	26	1/1	6625	Brown Silty Gravel & Stone Fragts.
	28			
	30			
	32	7/10	6626	Brown Silty Gravel & Stone Shale Fragts.
	34			
	36	17	6627	Brown Silty Gravel & Stone Shale Fragts.

LOG OF BORINGS (CONTINUED)

BRIDGE NO. 1-12-

T.M. 21

ELEV.	DEPTH	NO. BLOWS	SAMPLE NO.	DESCRIPTION
717.7	38			
	40			
	42			
	44			Shale, brown, siliceous, firm to medium firm in upper part, jointed in bottom 2.0', broken intermittently with thin clay seams.
	46			Core Loss: 15%
	48			
	50			
	52			
707.1	54			
	56			Shale, gray, siliceous, dense, firm, jointed 1.0'-1.5'.
	58			Core Loss: 10%
707.1	60			
	62			
	64			
	66			
	68			
	70			
	72			
	74			
	76			
	78			
	80			
	82			

STATE OF OHIO
DEPARTMENT OF HIGHWAYS
TESTING LABORATORY

LOG OF BORING

CO., RT. NO., SEC. JEP-25-13.53 ⁷
SEVENTH PIER BRIDGE NO. JEP-7-1433
SIDE HILL STRUCTURE
 LOCATION: T.H. 16 STA. 726+57 OFFSET 7.5 LT. FED. NO.

ELEV.	DEPTH	NO. BLOWS	SAMPLE NO.	DESCRIPTION
783.6	0			Brown Sandy Silt with Boulders and Cobbles of Brown Medium-Grained Sandstone.
	2			
	4			
778.6	6			
	8			
773.6	10			
				TOP OF FIRM ROCK
	12			Limestone, gray, partly crystalline, fossiliferous, firm, medium-to-thin bedded, with thin shale seams. Core Loss 10%.
	14			
767.7	16			
	18			Shale, brown to brownish gray, calcareous, fossiliferous, contains small limestone nodules intermittently jointed and broken. No Loss
	20			
761.0	22			
	24			
	26			Sandstone, gray and brown, medium-grained, generally firm, medium-to thin-bedded, with thin seams of soft shale. Core Loss 16%.
	28			
	30			
	32			
750.6	34			
	36			Coal, broken. Core Loss 43%.
747.6				

LOG OF BORING (CONTINUED)

BRIDGE NO. JEF-7-1433

T.H. 16

ELEV.	DEPTH	NO. BLOWS	SAMPLE NO.	DESCRIPTION
747.6	38			Mudstone, gray, calcareous, medium-firm. Core Loss 40%.
743.0	40			
				← BOTTOM OF BORING
	42			
	44			
	46			
	48			
	50			
	52			
	54			
	56			
	58			
	60			
	62			
	64			
	66			
	68			
	70			
	72			
	74			
	76			
	78			
	80			
	82			

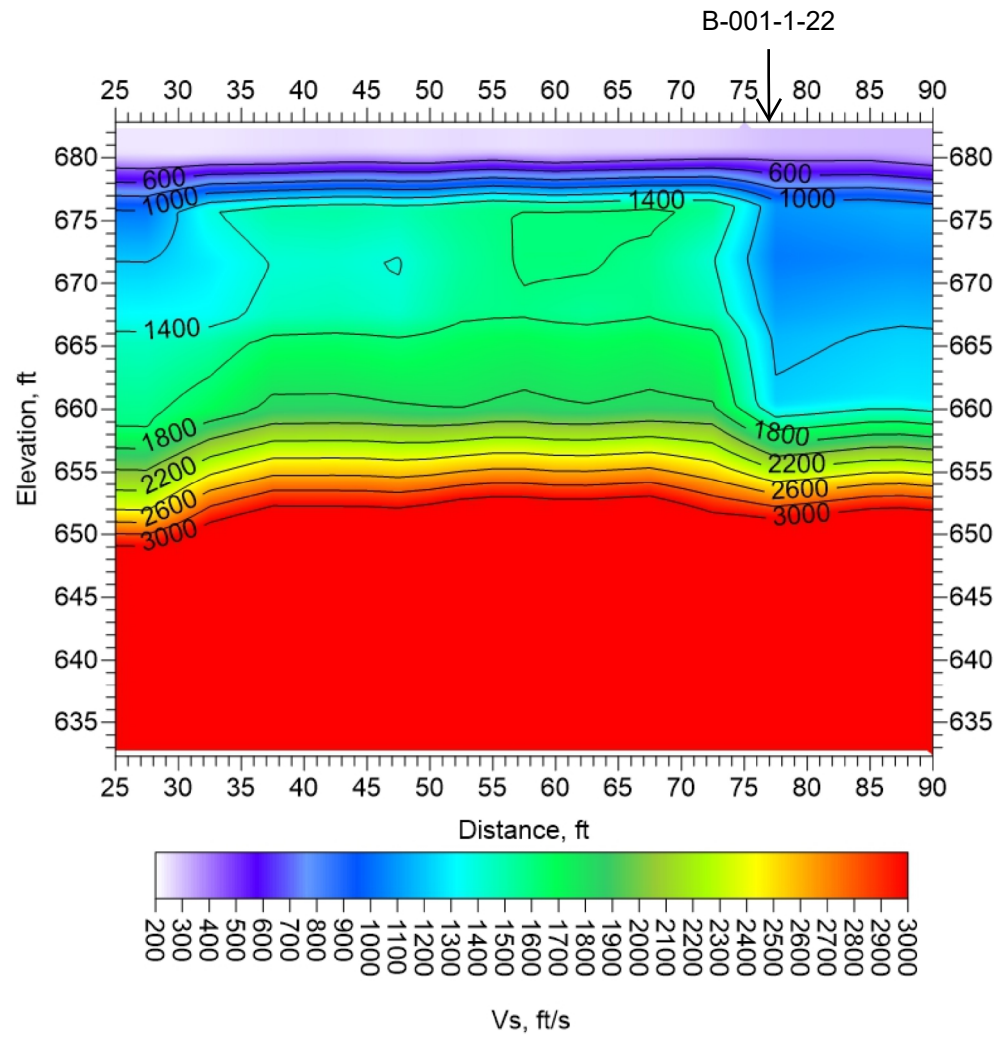
STATE OF OHIO
DEPARTMENT OF HIGHWAYS
TESTING LABORATORY

LOG OF BORING

CO., RT. NO. SEC. JEP-7-13.53 BRIDGE NO. JEP-7-1433
FORWARD ABUTMENT SIDE HILL STRUCTURE
 LOCATION: T.H. 20 STA. 727+18 OFFSET CL FED. NO.

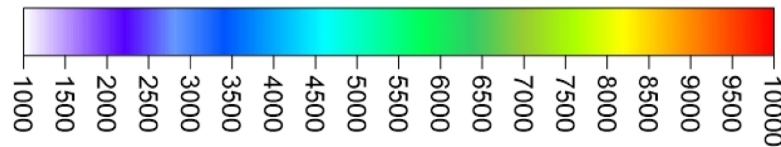
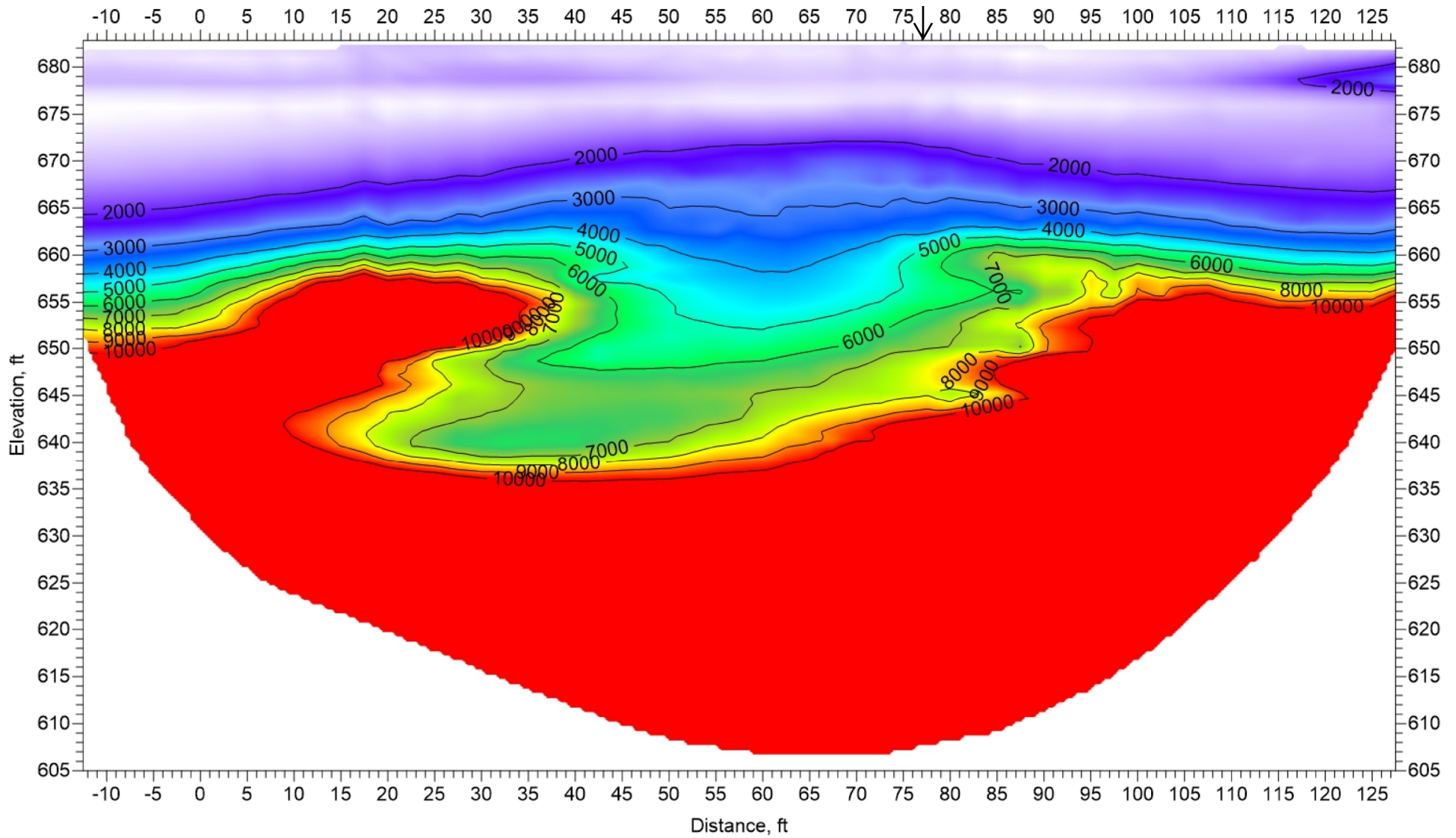
ELEV.	DEPTH	NO. BLOWS	SAMPLE NO.	DESCRIPTION
757.0	0			
	2			
	4			
752.0	6	9/6	11036	Brown & Gray Silty Sand w/Sandstone Fragments
	8			
747.0	10	7/8	11037	Brown Silty Sand w/Sandstone and Shale Fragments
	12			
	14			
742.0	16	12/20	11038	Gray Silt & Clay
	18			TOP OF SOFT, WEATHERED ROCK
738.8	20			Shale, dark gray & brown, siliceous, dense, soft and crumbly in top 2.0', generally medium-firm in remainder, jointed in part.
	22			No core loss
	24			TOP OF FIRM ROCK
732.0	26			
	28			Shale, gray, siliceous, somewhat micaceous, dense, hard, firm.
	30			Core loss 2'
	32			
	34			
722.0	36			BOTTOM OF BORING

JEF-7-13.95 PID 113999 ReMi Survey Line 1 Profile



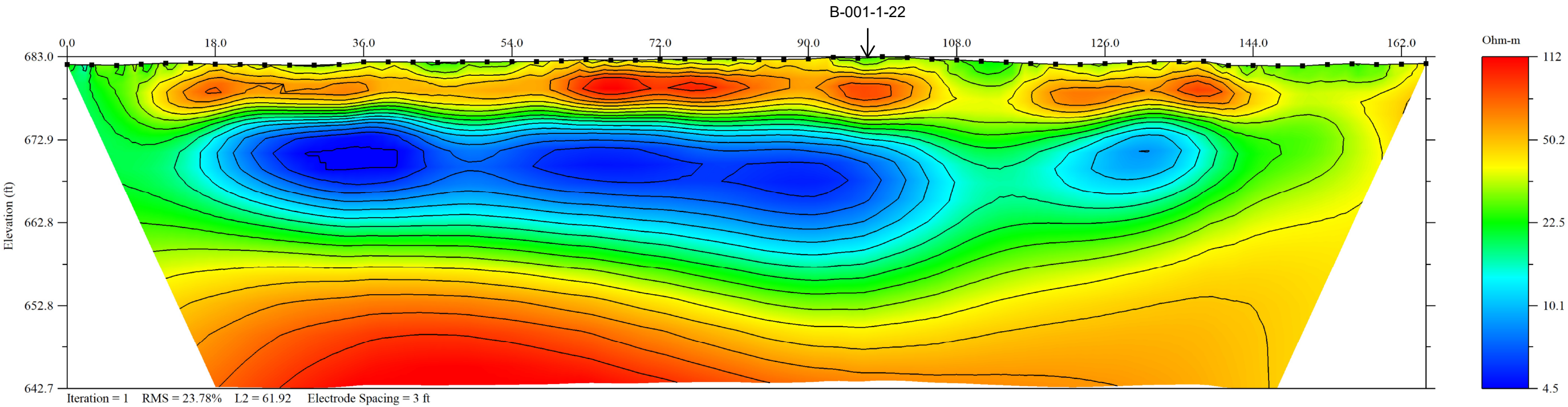
JEF-7-13.95 PID 113999 Refraction Profile

B-001-1-22

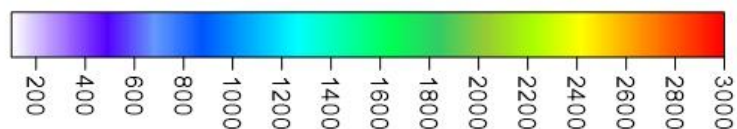
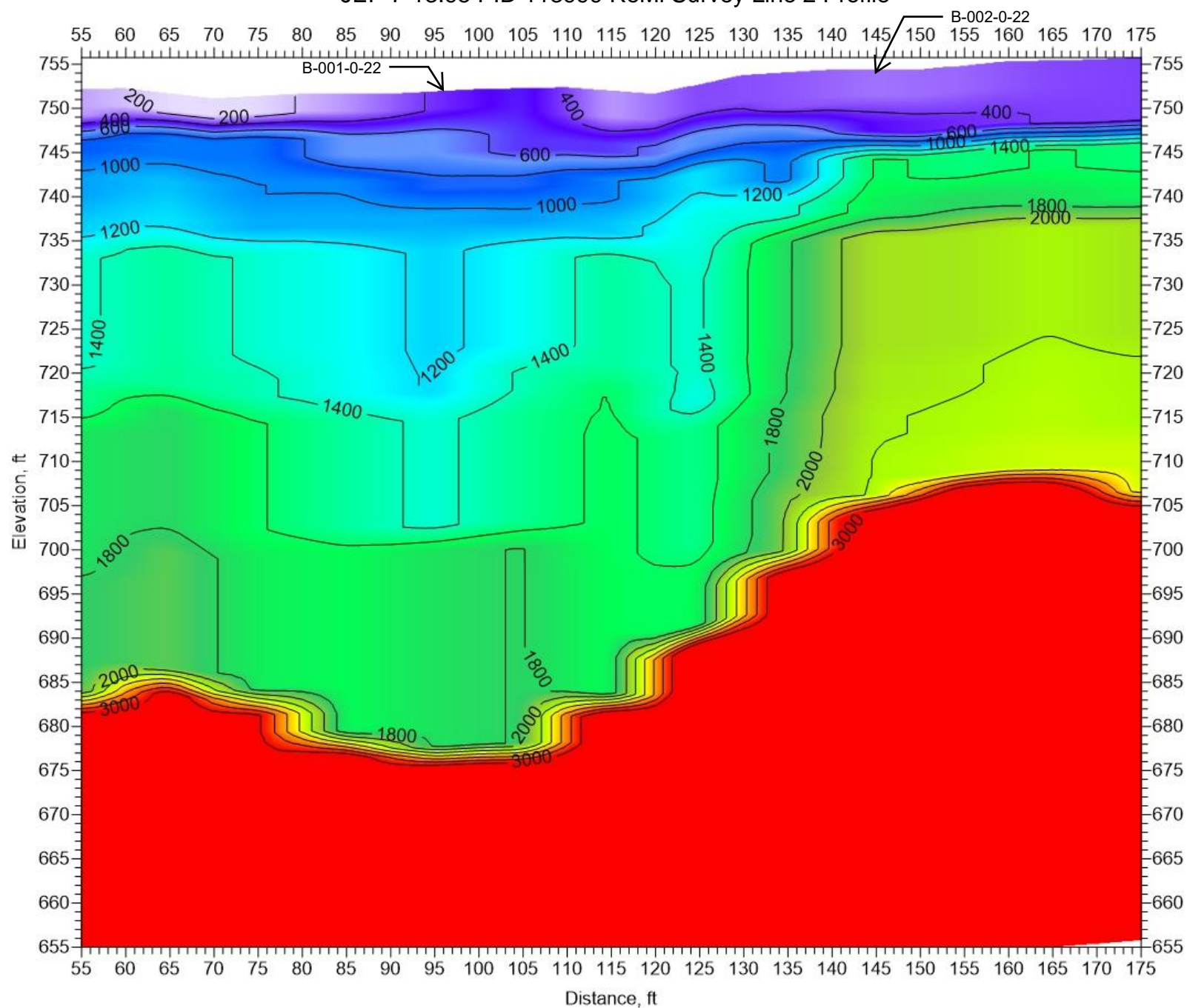


Vp, ft/s

JEF-7-13.95 PID 113999 ER Survey Line 1 Inverted Resistivity Profile



JEF-7-13.95 PID 113999 ReMi Survey Line 2 Profile



JEF-7-13.95 PID 113999 ReMi Survey Line 3 Profile

