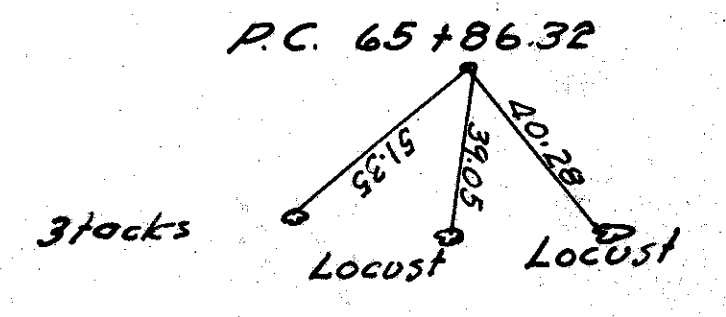
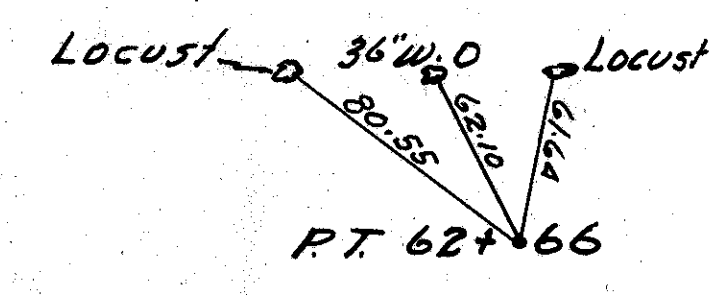
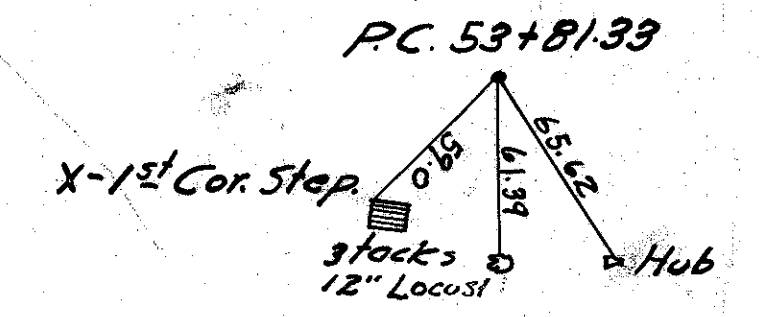
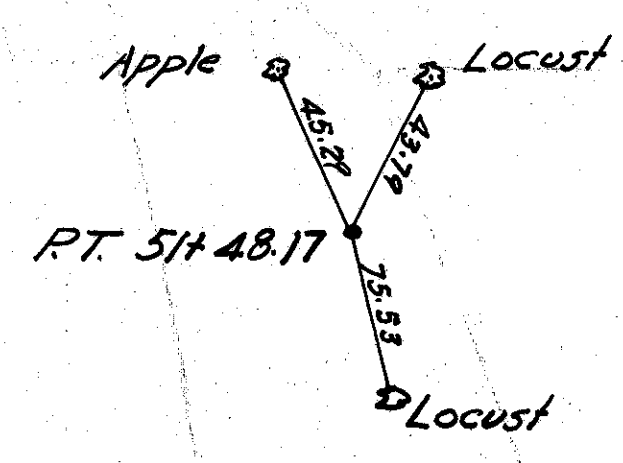
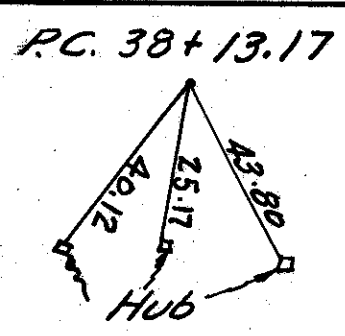
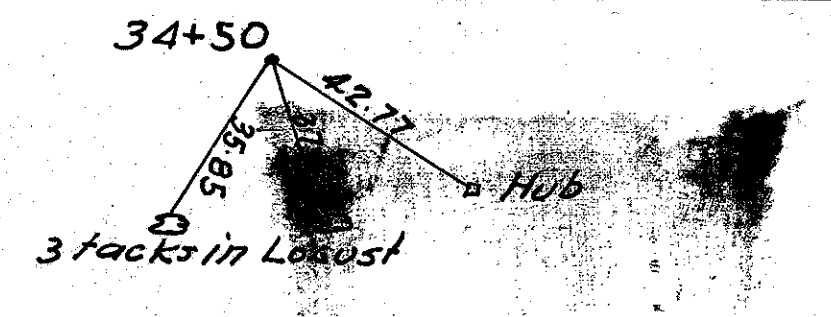


E. Spring Aids to Amsterdam

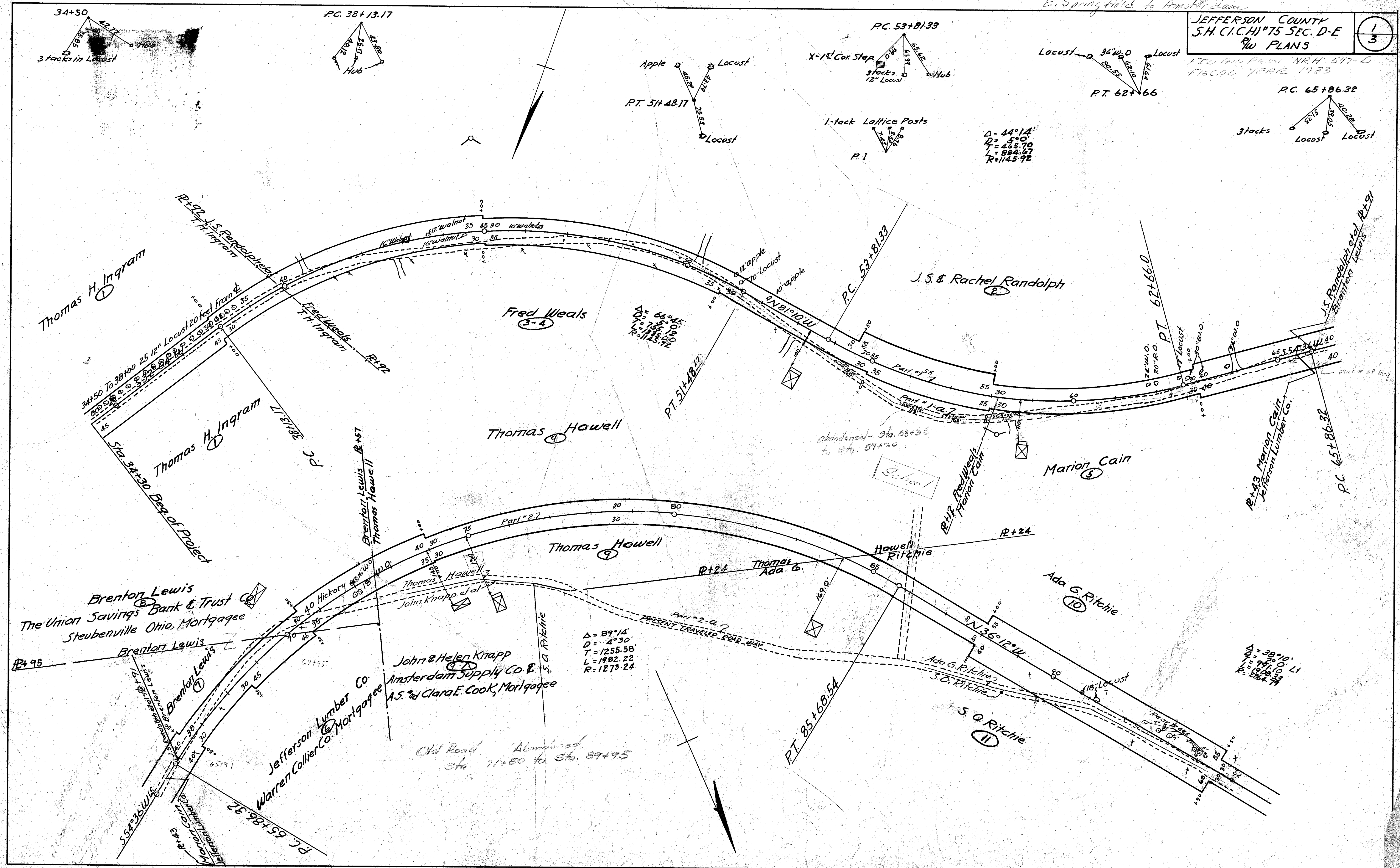


$\Delta = 44^\circ 14'$   
 $D = 500'$   
 $T = 465.70$   
 $L = 884.67$   
 $R = 1145.92$

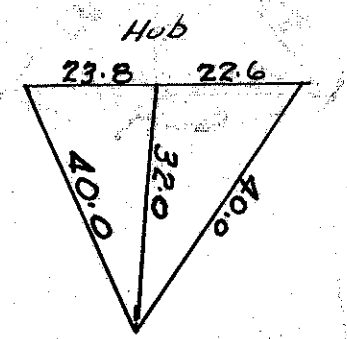
$\Delta = 66^\circ 45'$   
 $D = 750.10$   
 $L = 1145.00$   
 $R = 1145.92$

$\Delta = 89^\circ 14'$   
 $D = 4^\circ 30'$   
 $T = 1255.58$   
 $L = 1982.22$   
 $R = 1273.24$

$\Delta = 38^\circ 10'$   
 $D = 750.10$   
 $L = 1145.00$   
 $R = 1145.92$

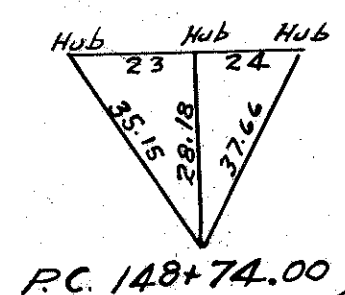


$\Delta = 38^{\circ}10'$   
 $D = 3^{\circ}0' \text{ LT.}$   
 $T = 660.74$   
 $L = 1272.22$   
 $R = 1909.86$



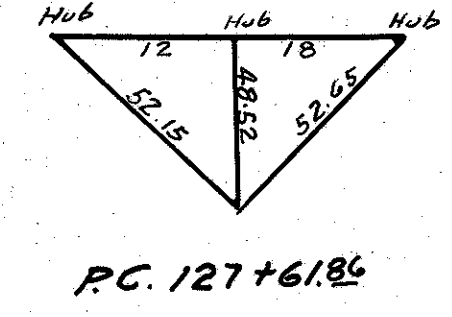
P.T. 108+36.88 Back  
108+11.24 Ahead

$\Delta = 72^{\circ}0'$   
 $D = 5^{\circ}30' \text{ LT.}$   
 $T = 756.86$   
 $L = 1309.09$   
 $R = 1041.74$

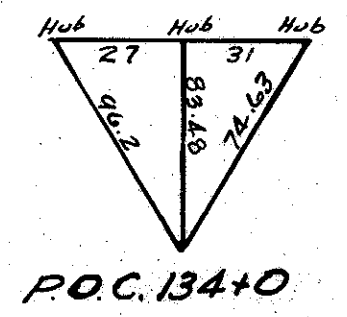


P.C. 148+74.00

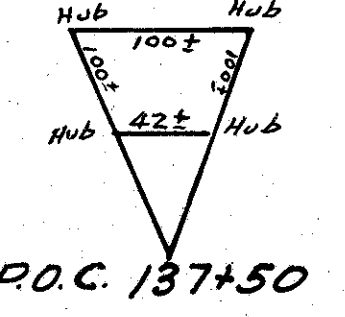
$\Delta = 42^{\circ}19'30''$   
 $D = 4^{\circ}0' \text{ RT.}$   
 $T = 554.49$   
 $L = 1058.12$   
 $R = 1432.39$



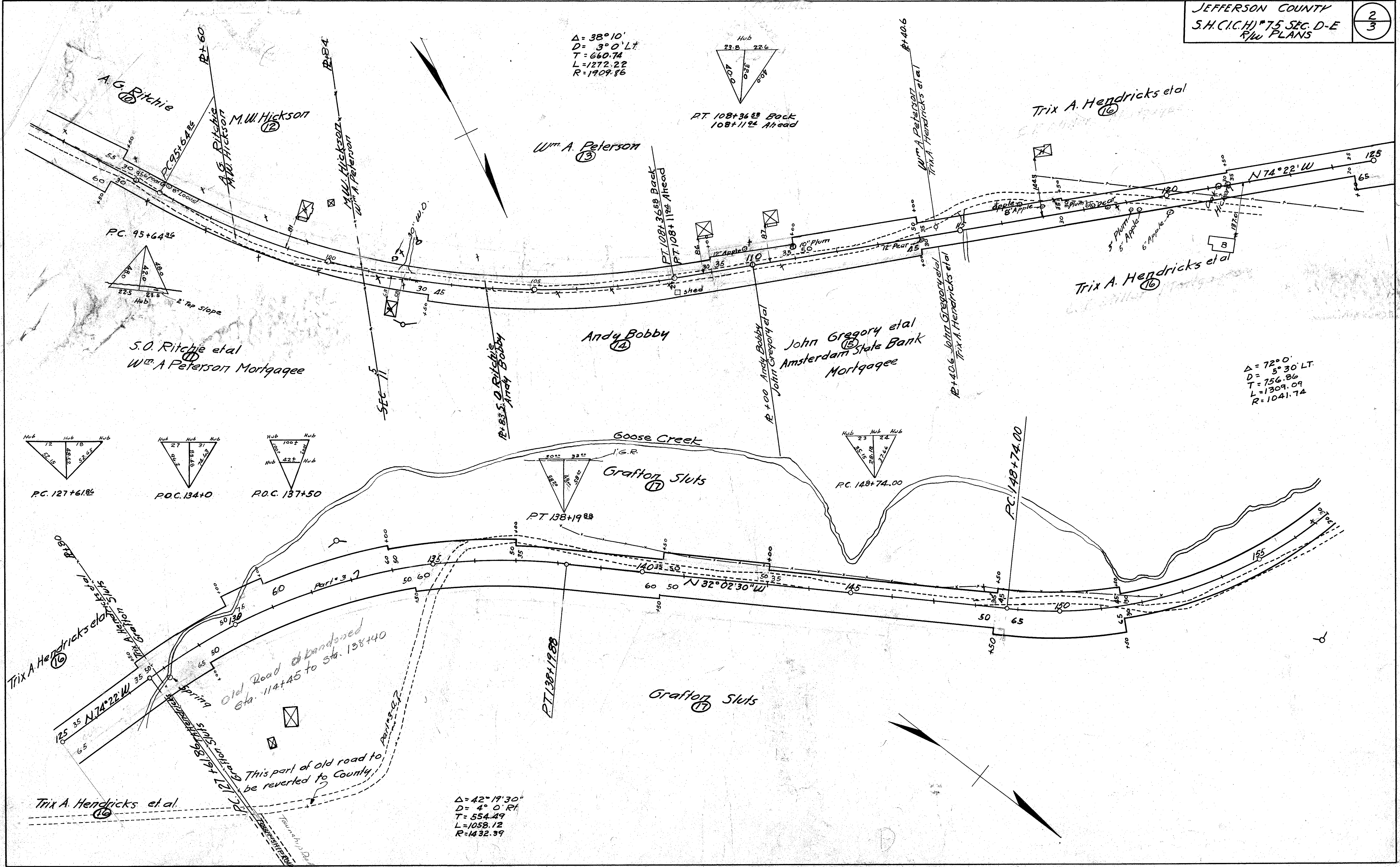
P.C. 127+61.86



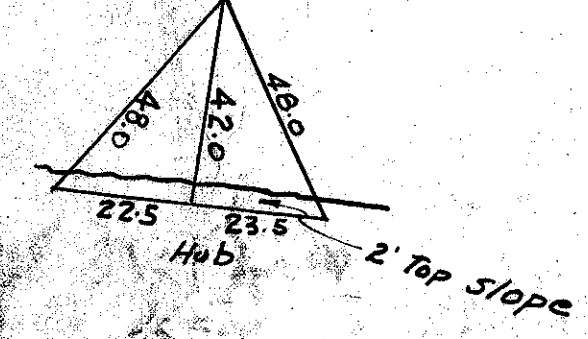
P.O.C. 134+0



P.O.C. 137+50



P.C. 95+64.35



S.O. Ritchie et al  
Wm. A. Peterson Mortgagee

Wm. A. Peterson (13)

Andy Bobby (14)

John Gregory et al  
Amsterdam State Bank  
Mortgagee

Grafton Sluts (17)

Trix A. Hendricks et al (16)

Trix A. Hendricks et al (16)

Trix A. Hendricks et al (16)

Trix A. Hendricks et al (16)

Old Road abandoned  
Sta. 114+45 to Sta. 138+40

This part of old road to  
be reverted to County

P.T. 138+19.88

P.T. 138+19.88

Grafton Sluts (17)

P.C. 148+74.00

N 74° 22' W

N 32° 02' 30" W

N 74° 22' W

N 74° 22' W

N 74° 22' W

N 74° 22' W

N 74° 22' W

N 74° 22' W

N 74° 22' W

N 74° 22' W

N 74° 22' W

N 74° 22' W

N 74° 22' W

N 74° 22' W

N 74° 22' W

N 74° 22' W

N 74° 22' W

N 74° 22' W

N 74° 22' W

N 74° 22' W

N 74° 22' W

N 74° 22' W

N 74° 22' W

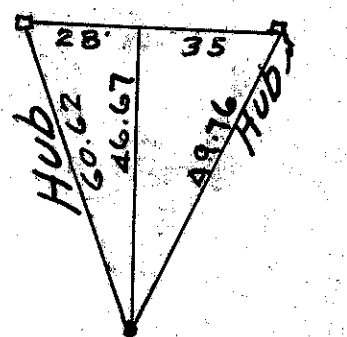
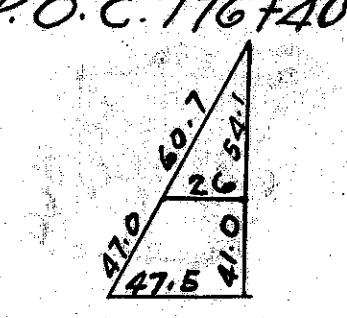
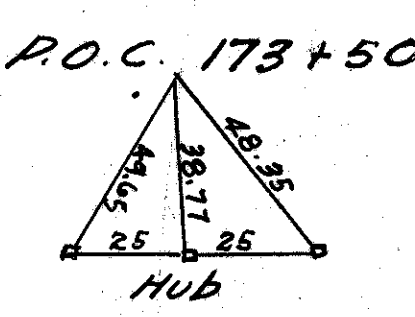
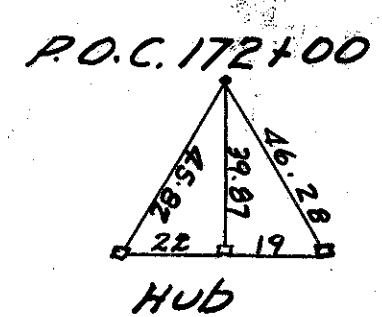
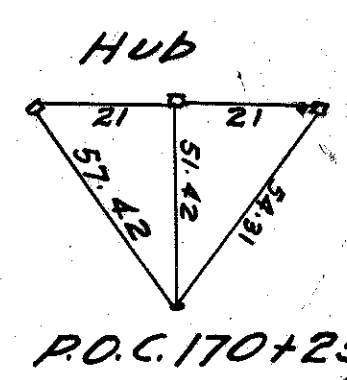
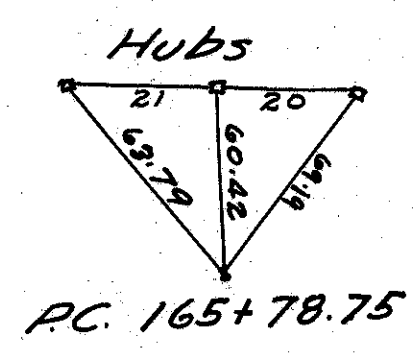
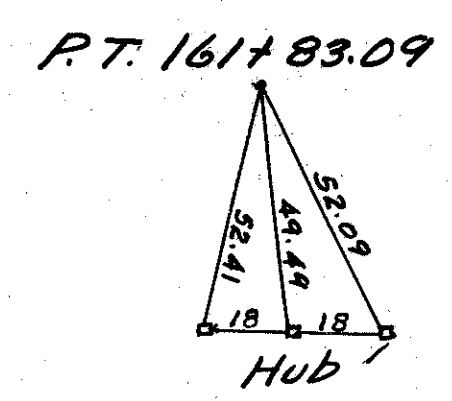
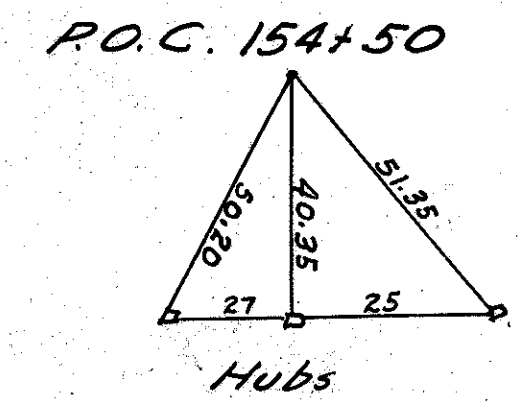
N 74° 22' W

N 74° 22' W

N 74° 22' W

N 74° 22' W

N 74° 22' W



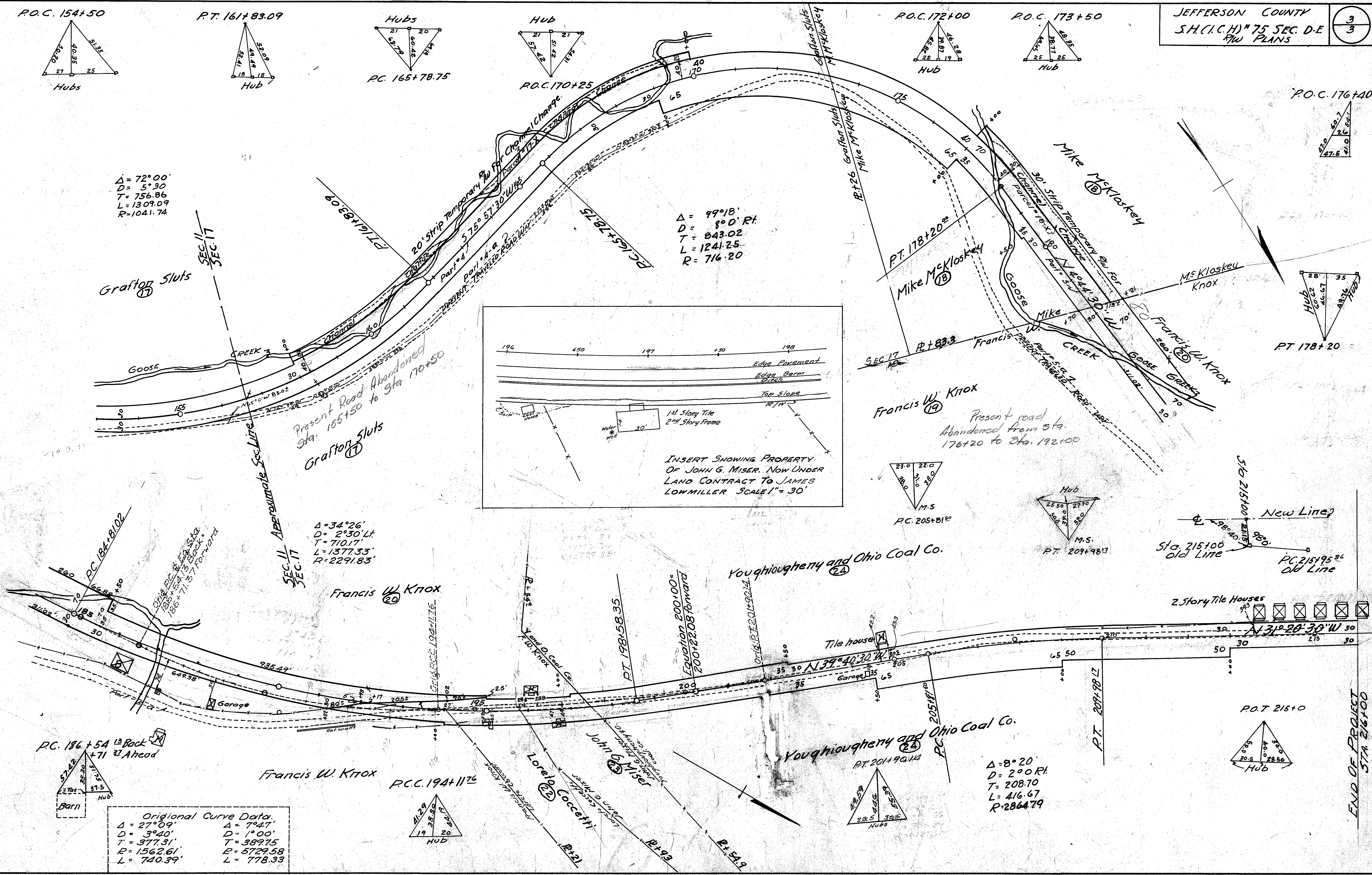
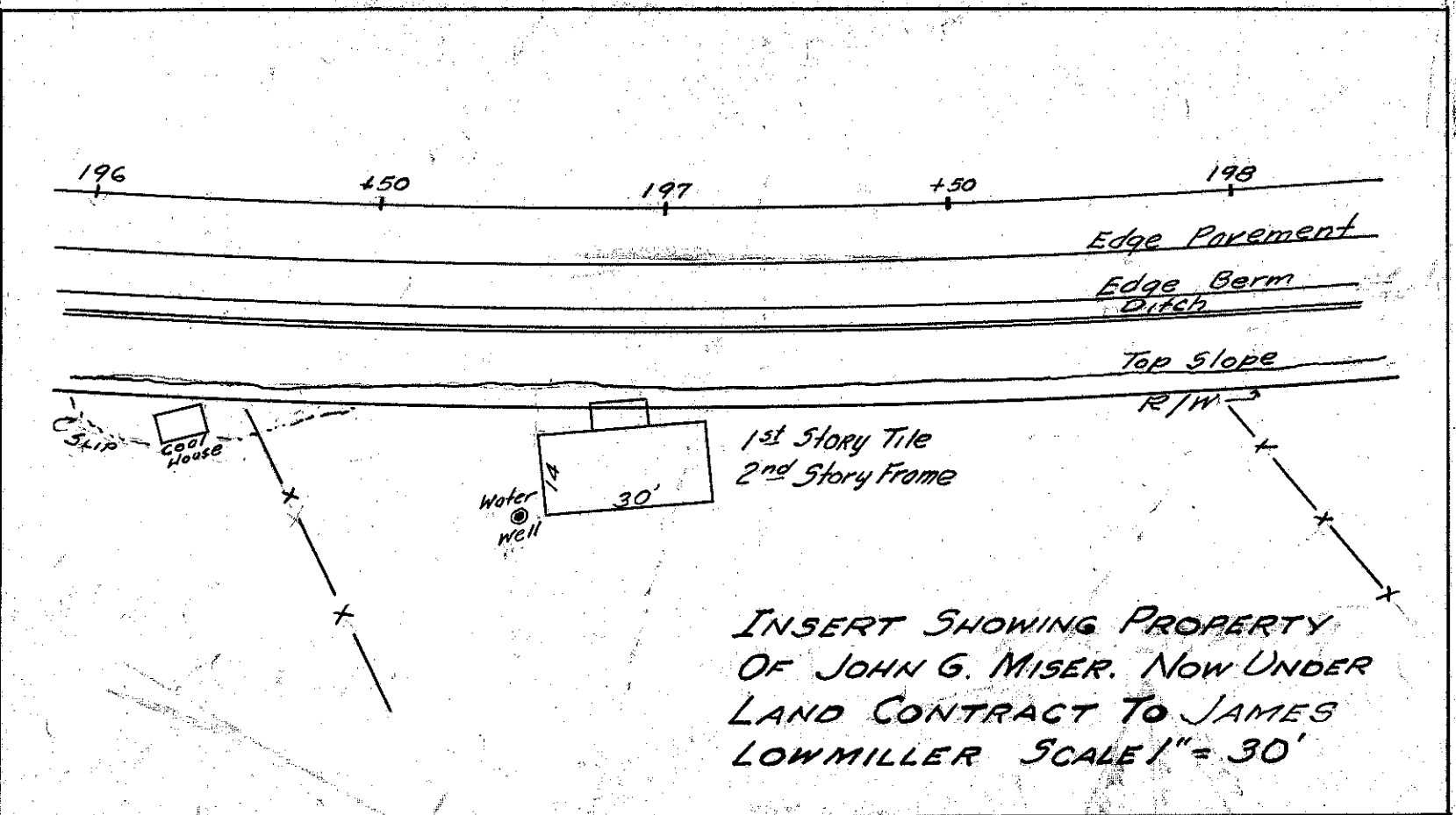
$\Delta = 72^{\circ}00'$   
 $D = 5^{\circ}30'$   
 $T = 756.86$   
 $L = 1309.09$   
 $R = 1041.74$

$\Delta = 99^{\circ}18'$   
 $D = 8^{\circ}0' RT$   
 $T = 843.02$   
 $L = 1241.25$   
 $R = 716.20$

$\Delta = 34^{\circ}26'$   
 $D = 2^{\circ}30' LT$   
 $T = 710.17'$   
 $L = 1377.53'$   
 $R = 2291.83'$

$\Delta = 8^{\circ}20'$   
 $D = 2^{\circ}0' RT$   
 $T = 208.70$   
 $L = 416.67$   
 $R = 2864.79$

Original Curve Data.	
$\Delta = 27^{\circ}09'$	$\Delta = 7^{\circ}47'$
$D = 3^{\circ}40'$	$D = 1^{\circ}00'$
$T = 377.31'$	$T = 389.75$
$R = 1562.61'$	$R = 5729.58$
$L = 740.39'$	$L = 778.33$



END OF PROJECT  
STA. 216+00