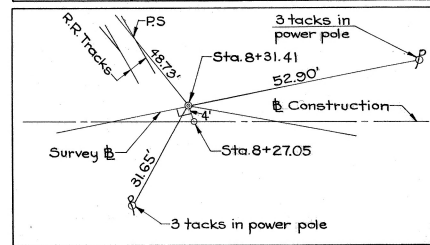
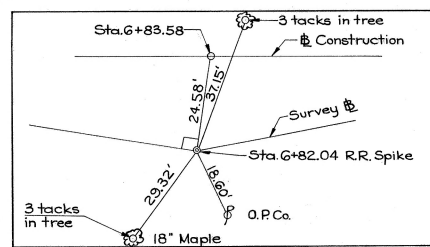
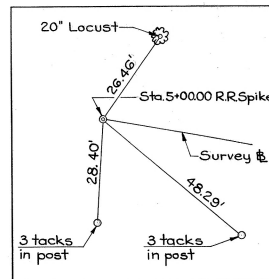


JEFFERSON COUNTY
JEF -152- (7.03-7.11)



BENCH MARK
R.R. Spike in Power Pole
39.5' Rt. of Sta. 9+29.2
Elev. 859.57

⊕ Denotes boring location

EXISTING BRIDGE DATA

YEAR BUILT: 1898
TYPE: Single Span Thru Truss.
SPAN: 79'-2" % Bearings
ROADWAY: 14'-0" Clear.
SKEW: 0°
SURFACE: 4" Wooden Planking with 2" Bit. Pav't.
ABUTMENTS: Stone Masonry.

PROPOSED STRUCTURE

TYPE: Single span welded deck girder with reinforced concrete deck & abutments.
SPAN: 90' c.c. Bearings
ROADWAY: 28'-0" curb to curb with 2'-3" safety curbs.
LOAD FREQUENCY: C.F. 130 (57)
SKEW: 30° 00' R.F.
WEARING SURFACE: 3" monolithic concrete
APPROACH SLABS: Rear: AS-1-54 (25' long)
Forward: AS-1-54 (20' long)
ALIGNMENT: Tangent

Drainage Area = 54 Sq. Miles.

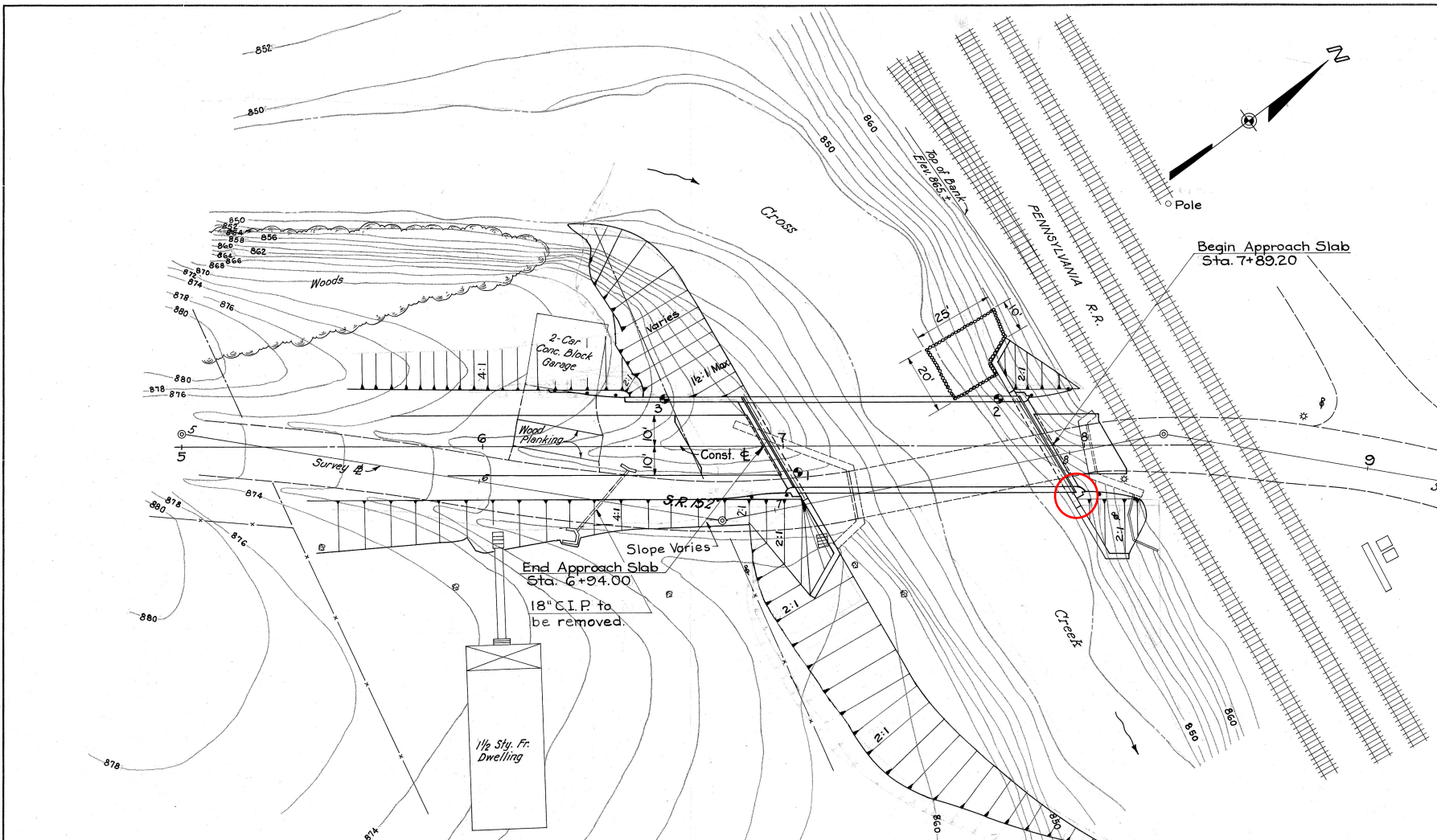
MICHAEL BAKER JR., CONSULTING ENGINEERS
ROCHESTER, PENNSYLVANIA

SITE PLAN

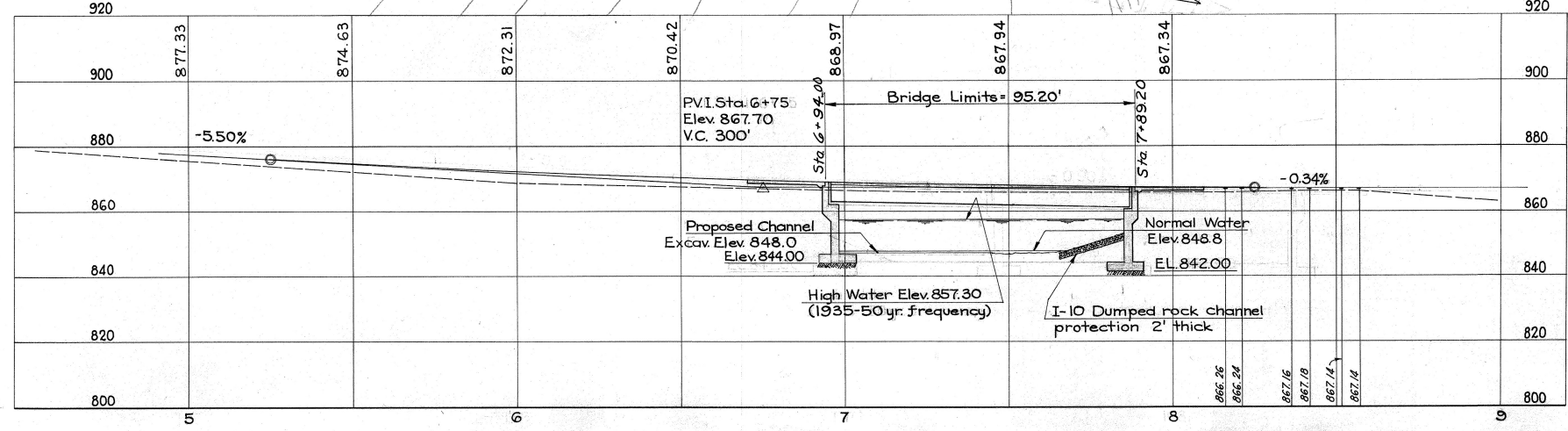
**BRIDGE NO. JEF -152-0711
OVER CROSS CREEK**

JEFFERSON COUNTY STA. 6+94.00
STA. 7+89.20

PRESENT TOPOGRAPHY		PROPOSED WORK		
SURVEYED	DRAWN	DESIGNED	CHECKED	REVIEWED
M.B. Jk	J.H.	E.FR.	P.T.R.	A.A.L.



Boring	Rock El.
1	855.5
2	844.2
3	859.9



FOUNDATION SOUNDINGS:
Foundation design and foundation quantities are based on a study of borings and soil-sampling soundings made at the site. This sounding information may be inspected in the office of the Bureau of Bridges in Columbus or in the Division Office, but the State does not guarantee the accuracy thereof.