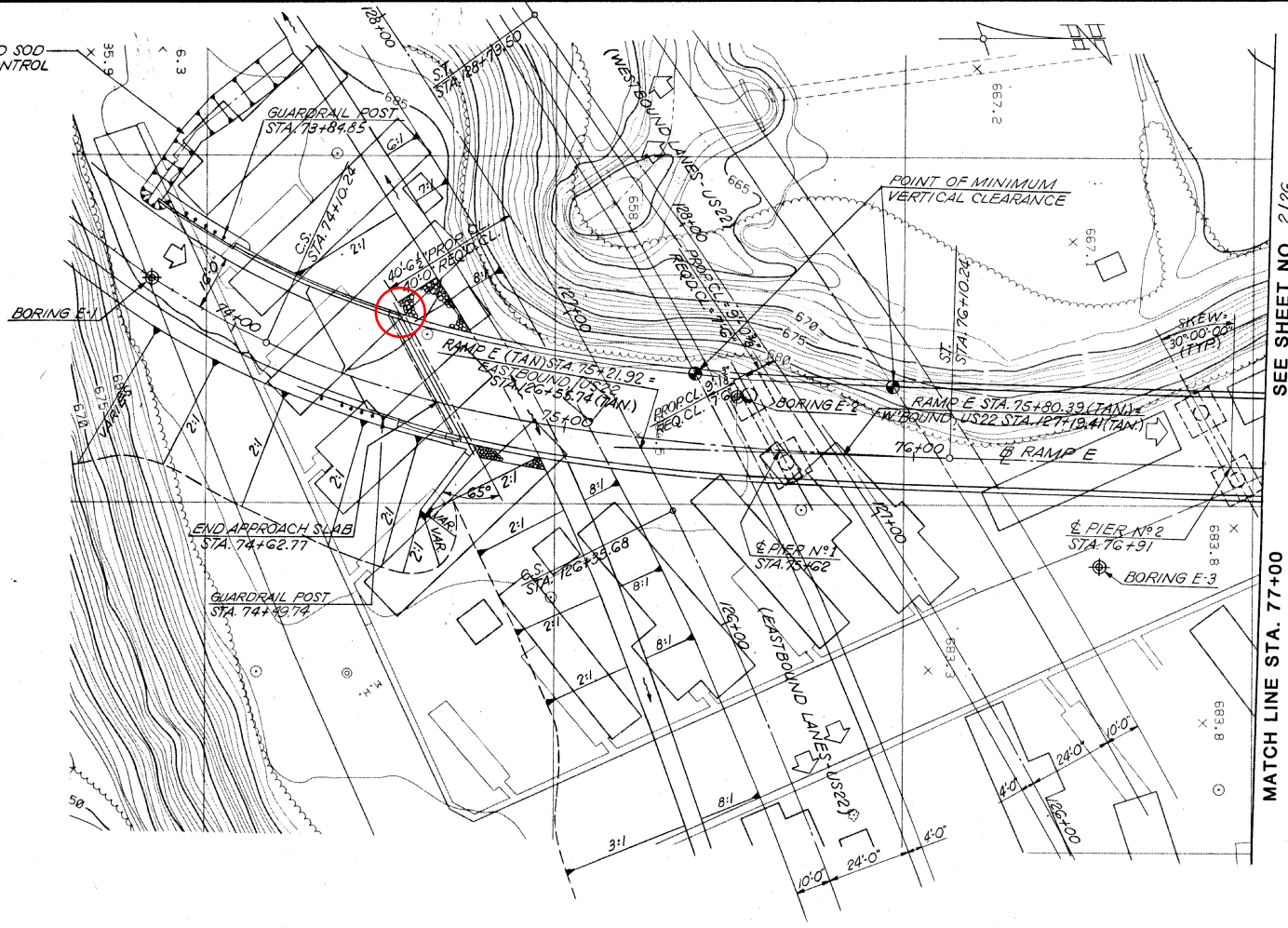


CURVE DATA - RAMP E

P.I. STA. 73+86.28
 L = 67°50'22"LT.
 R = 250.00'
 Lc = 96.01'
 Os = 22°55'06"
 Ls = 200.00'
 Ts = 272.04'
 Es = 59.26'
 L.T. = 134.47'
 S.T. = 67.70'
 S = 0.0591/FT.



SEE SHEET NO. 2/26

NOTE: ESTIMATED AVERAGE PAY LENGTH FOR HP 10 X 42 PILES IS 30 FEET AT REAR ABUTMENT AND 50 FEET AT FORWARD ABUTMENT. ESTIMATED AVERAGE PAY LENGTH FOR HP 12 X 53 PILES IS 30 FEET AT PIER NO. 1, 40 FEET AT PIER NO. 2, AND 35 FEET AT PIER NO. 3.

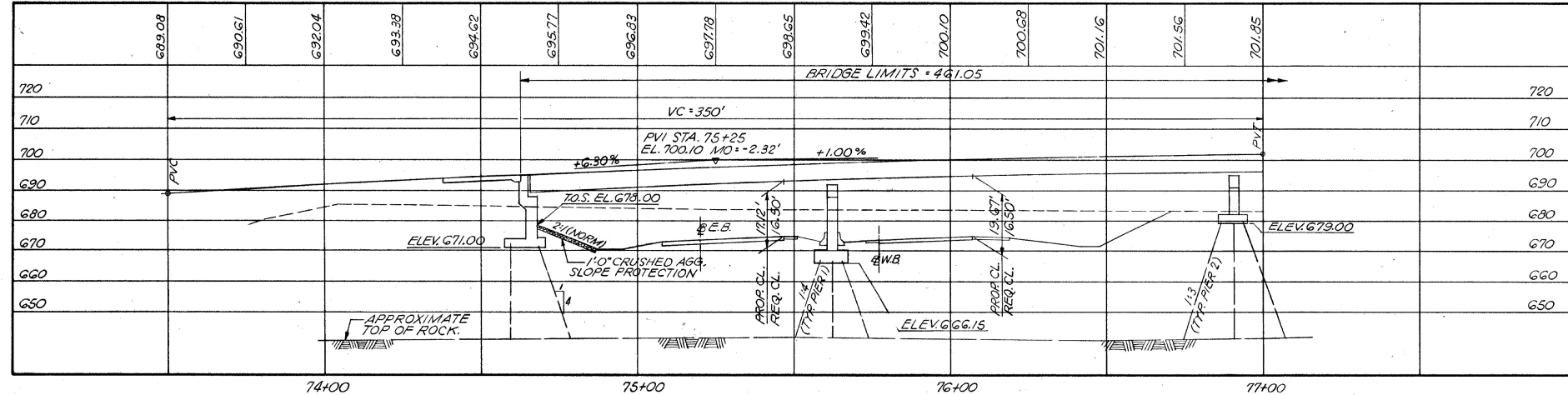
PROPOSED STRUCTURE

TYPE: COMPOSITE STEEL PLATE GIRDER A572-50
 PAINTED W/CONC. PIER AND HIGH WALL AND SPILL THROUGH ABUTMENTS.
 SPANS: 90'-0", 129'-0", 129'-0" AND 100'-0" (ON TAN.)

ROADWAY: 28'-0" F/F CURB
 SKEW: 30°00'00" R.F. (TO TANGENT)
 DESIGN LOADING: HS20-44 CASE II AND THE ALTERNATE MILITARY LOADING.

APPROACH SLAB: AS-1-81 (25'-0" LONG)
 ALIGNMENT: 23° SPIRAL LT., TANGENT, 23° SPIRAL RT.
 SUPERELEVATION: VARIES (0.0707 FT./FT. MAX.)
 WEARING SURFACE: 1" MONOLITHIC
 AVERAGE DAILY TRAFFIC: 3,350 (2005)
 AVERAGE DAILY TRUCK TRAFFIC: 150 (2005)

NOTE: EARTHWORK LIMITS SHOWN ARE APPROXIMATE. ACTUAL SLOPES SHALL CONFORM TO PLAN CROSS-SECTIONS.



MOSURE AND SYRAKIS CO.
YOUNGSTOWN, OHIO

SITE PLAN
BRIDGE NO. JEF-22-1482
RAMP E
OVER
U.S. ROUTE 22 & EXIST. C.R. 43
JEFFERSON COUNTY, OHIO

STA. 74+82.77
STA. 79+23.82

DESIGNED	DRAWN	CALC.	CHECKED	REVIEWED
M.S.	J.M.O.	M.S.	W.H.	D.S.
6-87	6-87	6-87	6-87	11-89