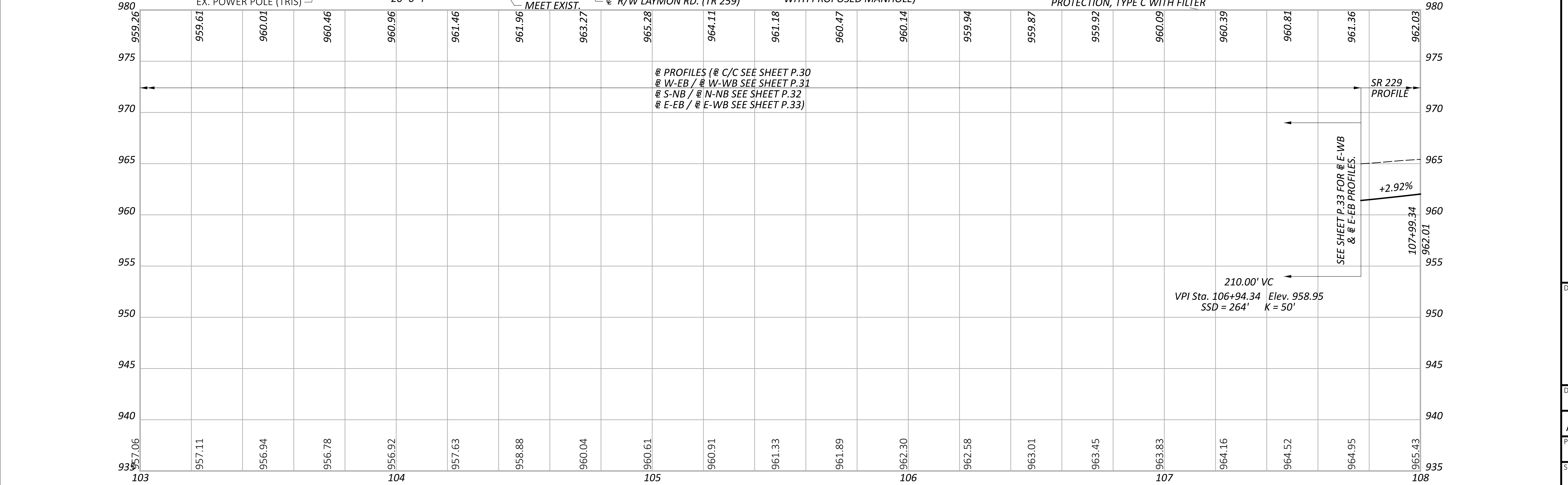
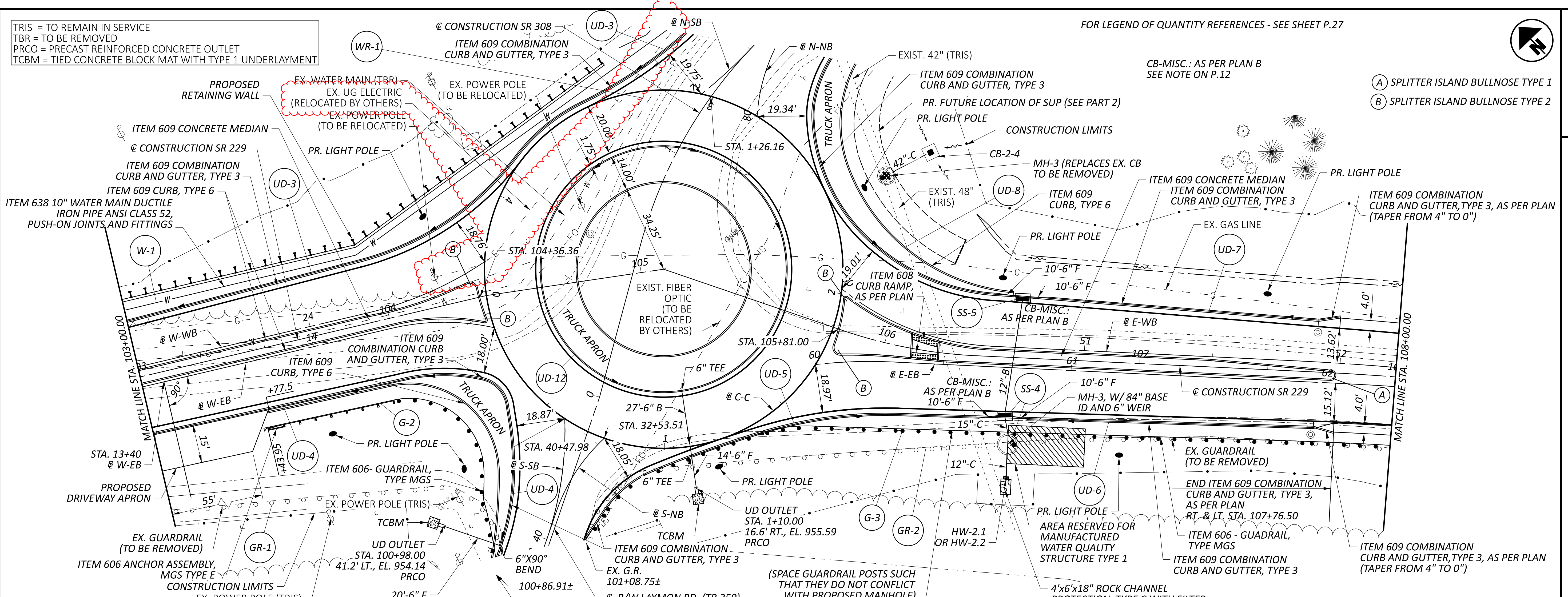
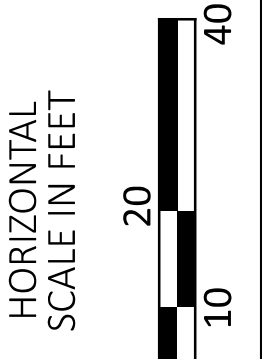
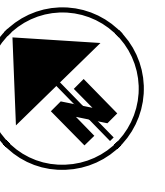


KNO-229/308-13.06/0.00

MODEL: W:\06 - Plan 6 PAPER SIZE: 34x22 (in.) DATE: 12/21/2023 TIME: 10:23:43 AM USER: Josh_Rognon
 pw:\d\chodot-pw.bentley.com\chodot-pw-02\Documents\01 Active Projects\District 05\Knox\115984\401-Engineering_2\LMN\Roadway\Sheets\115984_GP002

TRIS = TO REMAIN IN SERVICE
 TBR = TO BE REMOVED
 PRCO = PRECAST REINFORCED CONCRETE OUTLET
 TCBM = TIED CONCRETE BLOCK MAT WITH TYPE 1 UNDERLAYMENT

FOR LEGEND OF QUANTITY REFERENCES - SEE SHEET P.27



PROFILES (@ C/C SEE SHEET P.30
 @ W-EB / @ W-WB SEE SHEET P.31
 @ S-NB / @ N-NB SEE SHEET P.32
 @ E-EB / @ E-WB SEE SHEET P.33)

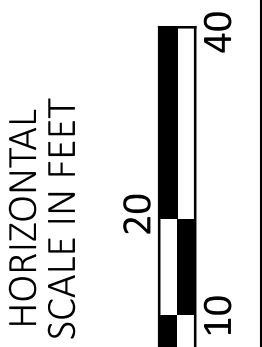
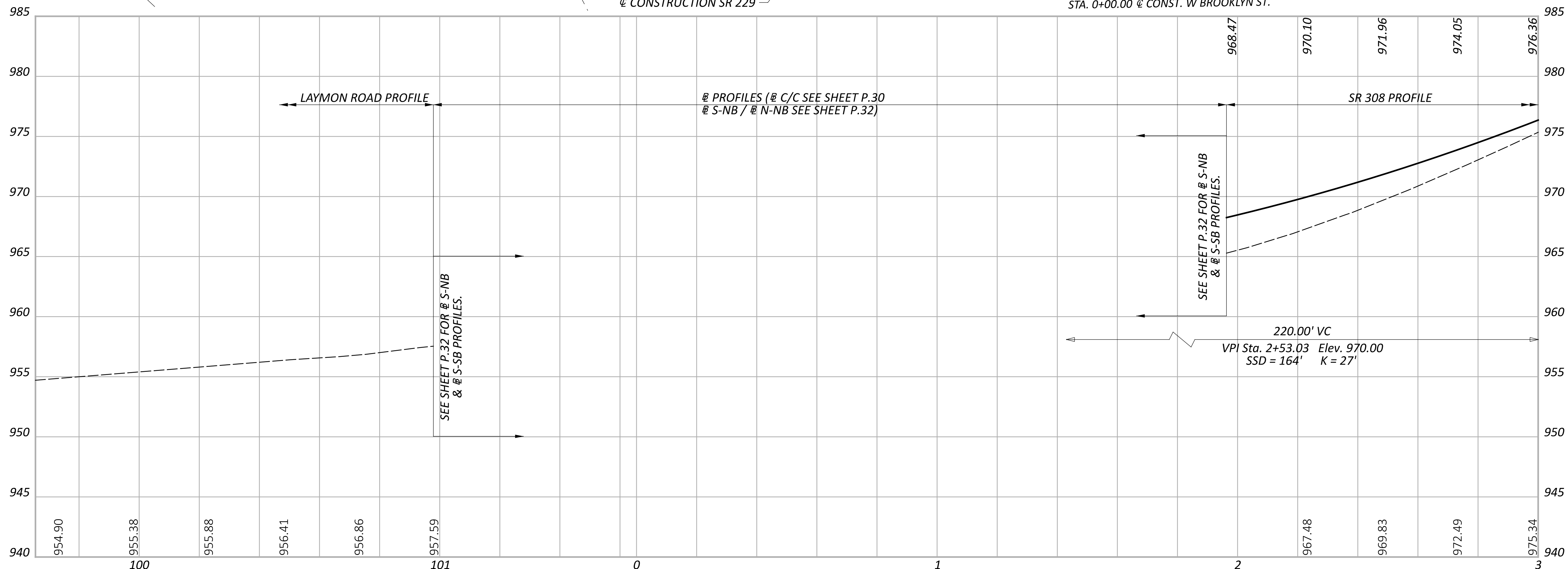
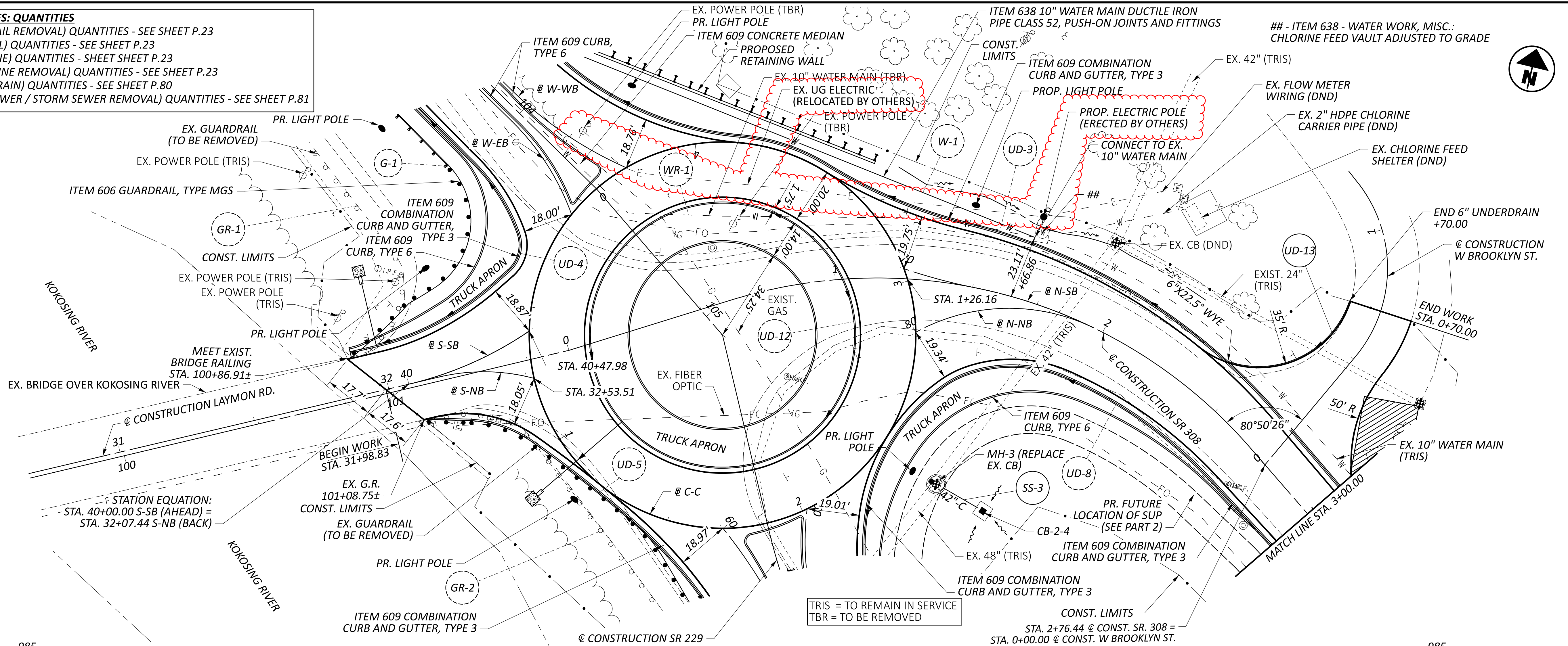
210.00' VC
 VPI Sta. 106+94.34 Elev. 958.95
 SSD = 264' K = 50'

SEE SHEET P.33 FOR @ E-WB
 & @ E-EB PROFILES.

PLAN AND PROFILE SR 229
 STA. 103+00.00 TO STA. 108+00.00

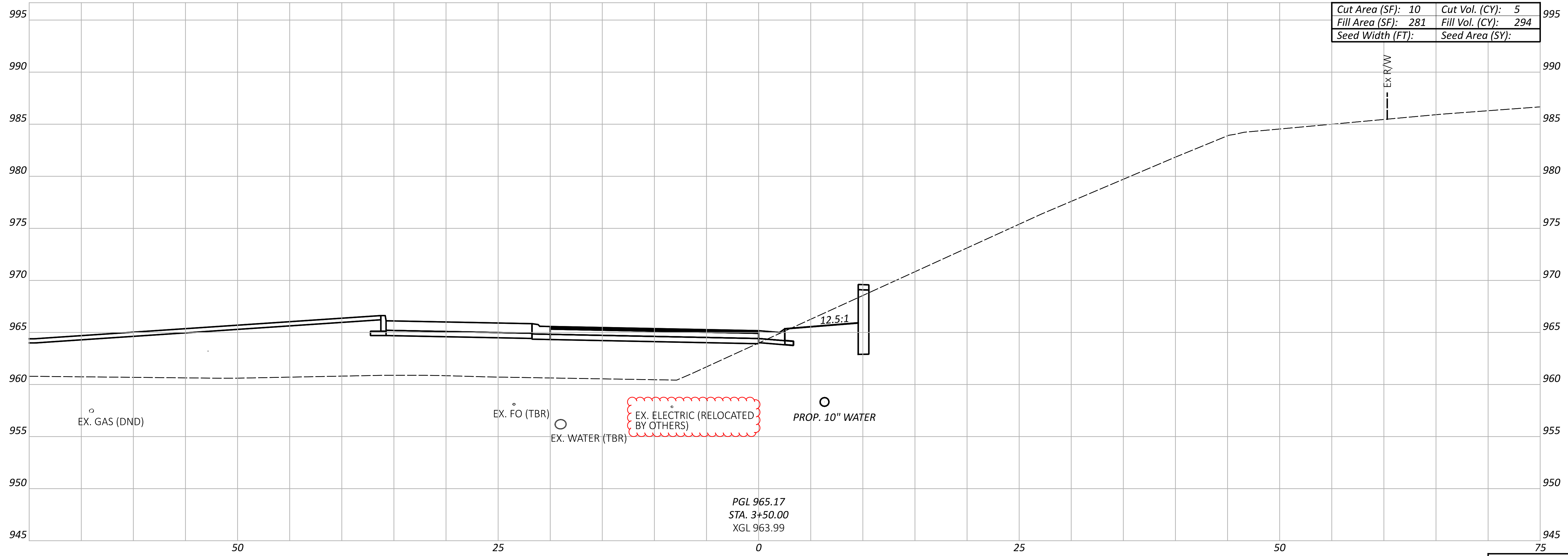
DESIGN AGENCY	2LMN
DESIGNER	JJR
REVIEWER	ALL 08/14/23
PROJECT ID	115984
SHEET TOTAL	P.28 129

CROSS REFERENCES: QUANTITIES
FOR GR (GUARDRAIL REMOVAL) QUANTITIES - SEE SHEET P.23
FOR G (GUARDRAIL) QUANTITIES - SEE SHEET P.23
FOR W (WATER LINE) QUANTITIES - SHEET SHEET P.23
FOR WR (WATER LINE REMOVAL) QUANTITIES - SEE SHEET P.23
FOR UD (UNDERDRAIN) QUANTITIES - SEE SHEET P.80
FOR SS (STORM SEWER / STORM SEWER REMOVAL) QUANTITIES - SEE SHEET P.81



PLAN VIEW LAYMON RD & PLAN AND PFOFILE SR 308
STA. 31+98.83 TO STA. 32+53.51 & STA. 1+26.16 TO STA. 3+00.00

DESIGN AGENCY	
2LMN	
DESIGNER	JJR
REVIEWER	ALL 08/14/23
PROJECT ID	115984
SHEET	TOTAL
P.51	129



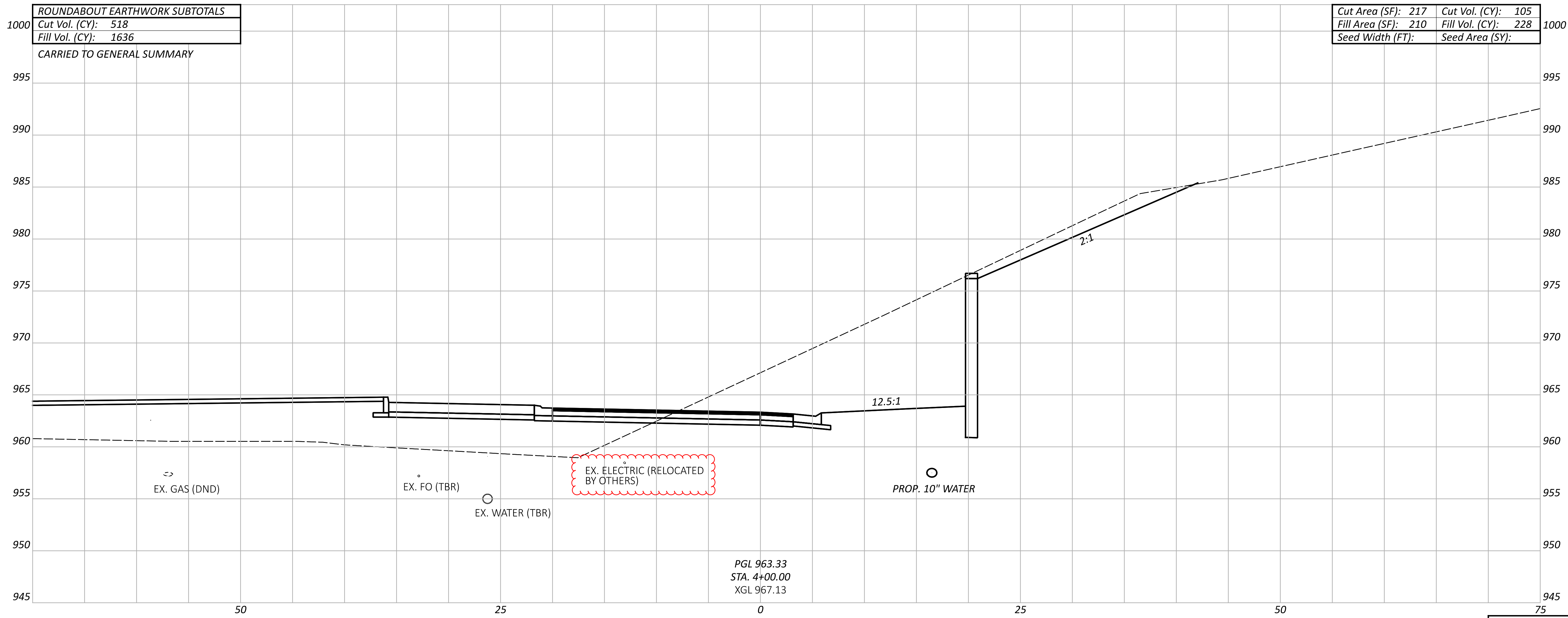
Cut Area (SF):	10	Cut Vol. (CY):	5
Fill Area (SF):	281	Fill Vol. (CY):	294
Seed Width (FT):		Seed Area (SY):	

PGL 965.17
 STA. 3+50.00
 XGL 963.99

Sheet Totals			PROJECT ID	
Seeding	Cut	Fill	SHEET	TOTAL
	5	294	P.68	129

CROSS SECTIONS - ROUNDABOUT
 STA. 3+50.00

DESIGN AGENCY
2LMN
 DESIGNER
 MAK
 REVIEWER
 ALL 08/14/23
 PROJECT ID
 115984



ROUNDBABOUT EARTHWORK SUBTOTALS	
Cut Vol. (CY):	518
Fill Vol. (CY):	1636

CARRIED TO GENERAL SUMMARY

Cut Area (SF):	217	Cut Vol. (CY):	105
Fill Area (SF):	210	Fill Vol. (CY):	228
Seed Width (FT):		Seed Area (SY):	

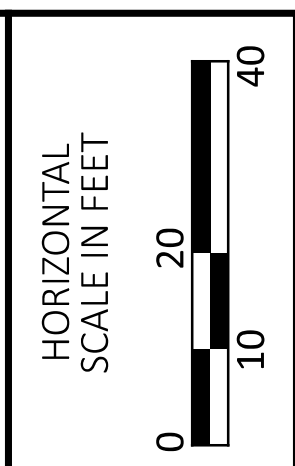
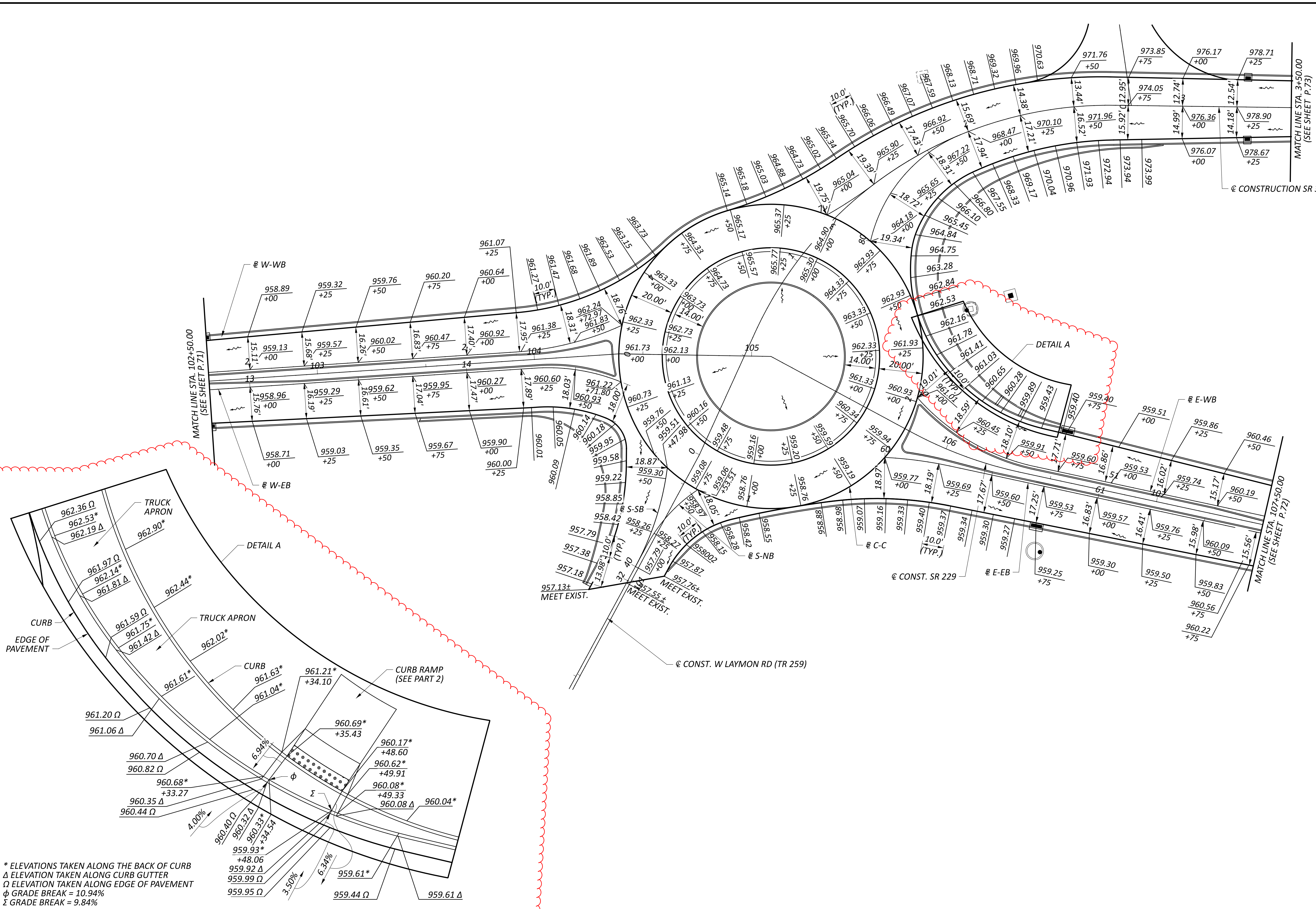
PGL 963.33
 STA. 4+00.00
 XGL 967.13

Sheet Totals			115984	
Seeding	Cut	Fill	SHEET	TOTAL
	105	228	P.69	129

CROSS SECTIONS - ROUNDBABOUT
 STA. 4+00.00

DESIGN AGENCY
2LMN
 DESIGNER
 MAK
 REVIEWER
 ALL 08/14/23
 PROJECT ID
 115984

* ELEVATIONS TAKEN ALONG THE BACK OF CURB
Δ ELEVATION TAKEN ALONG CURB GUTTER
Ω ELEVATION TAKEN ALONG EDGE OF PAVEMENT
φ GRADE BREAK = 10.94%
Σ GRADE BREAK = 9.84%



ROUNDABOUT PAVEMENT DETAILS
SR 229, SR 308 & LAYMON RD (TR 259)

DESIGN AGENCY	
2LMN	
DESIGNER	JJR
REVIEWER	ALL
PROJECT ID	08/14/23
SHEET	115984
TOTAL	129
P.74	

ITEM 452 - 11" NON REINFORCED CONCRETE PAVEMENT, CLASS QC 1P, AS PER PLAN

THIS ITEM CONSISTS OF THE CONSTRUCTION OF A EXPOSED AGGREGAT FINISH SIMILAR TO THE EXPOSED AGGREGATE FINISH KENYON COLLEGE USES AT THEIR CAMPUS FOR SIDEWALK. THIS ITEM IS FOR THE CONCRETE TRUCK APRON CONFORMING TO ODOT CMS 452, AND INFORMATION INCLUDED BELOW AND ALL APPLICABLE MANUFACTURER'S REQUIREMENTS.

THE CONTRACTOR SHALL SUBMIT THE TECHNICAL DATA AND SAMPLE OF THE CONCRETE TO THE ENGINEER FOR APPROVAL NO LESS THAN 14 DAYS PRIOR TO USE. AN APPROVED SET RETARDING ADMIXTURE CONFORMING TO 705.12 SHALL BE USED WHEN THE NOMINAL TEMPERATURE EXCEEDS 50 DEGREES F.

AFTER PLACEMENT OF THE CONCRETE, THE CONTRACTOR SHALL APPLY AN ACRYLIC BASED CONCRETE SEALER AND CURING AGENT. THE SEALER SHALL BE APPLIED IN ACCORDANCE WITH THE MANUFACTURE'S SPECIFICATIONS. THE SEALER SHALL HAVE A MEDIUM TO HIGH GLOSS.

THE CONTRACTOR SHALL SUBMIT THE BRAND NAME AND TECHNICAL DATA FOR THE CONCRETE SEALER TO THE ENGINEER FOR APPROVAL NO LESS THAN 14 DAYS PRIOR TO USE.

ALL MATERIALS, LABOR, EQUIPMENT, AND OTHER EXPENSES ASSOCIATED WITH AESTHETICALLY FINISHING THE CONCRETE SHALL BE INCLUDED IN THE UNIT PRICE BID FOR ITEM 452 - 11" NON-REINFORCED CONCRETE PAVEMENT, CLASS QC 1P, AS PER PLAN.

ITEM 608 - CURB RAMP, AS PER PLAN

ITEM 608 - CURB RAMP, AS PER PLAN SHALL CONSISTS OF THE CONSTRUCTION OF A EXPOSED AGGREGATE FINISH SIMILAR TO THE EXPOSED AGGREGATE FINISH KENYON COLLEGE USES AT THEIR CAMPUS FOR SIDEWALK. THIS ITEM IS FOR THE CONCRETE CURB RAMP CONFORMING TO ODOT CMS 608, AND INFORMATION INCLUDED IN THE PLAN NOTE ABOVE IN ITEM 452 - NON-REINFORCED CONCRETE PAVEMENT, CLASS QC 1P, AS PER PLAN AND ALL APPLICABLE MANUFACTURER'S REQUIREMENTS. CURB RAMPS SHALL BE 6" THICK.

THE TRUNCATED DOMES MATERIAL SHALL BE STEEL. ALL MATERIALS, LABOR, EQUIPMENT, AND OTHER EXPENSES ASSOCIATED WITH THE FINISHING OF THE CONCRETE SHALL BE INCLUDED IN THE UNIT PRICE BID FOR ITEM 608 - CURB RAMP, AS PER PLAN.

ITEM 625, LUMINAIRE, MISC: POST TOP SOLID STATE (LED) DECORATIVE, AON14, 120V

IN ADDITION TO THE REQUIREMENTS OF 625, THIS ITEM OF WORK SHALL CONSIST OF FURNISHING AND INSTALLING COMPLETE DECORATIVE POST TOP LED LUMINAIRE FOR BIKEWAY AND SIDEWALK ILLUMINATION.

THIS ITEM CONSISTS OF SUPPLYING AND INSTALLING DECORATIVE POST-TOP LED LUMINAIRES FOR BIKEWAY AND SIDEWALK ILLUMINATION.

THE DECORATIVE LUMINAIRE CONSISTS OF A FLAT, ROUND 30" SHADE. PROVIDE LUMINAIRE WITH TENON ADAPTER TO MOUNT TO A 3" DIA X 4" TALL TENON LUMINAIRE WITH A B-U-G UP-LIGHTING RATING OF UO.

THE LUMINAIRE IS INTENDED FOR EXTERNAL ON/OFF CONTROL AND SHALL NOT INCLUDE A PHOTOCELL SOCKET.

ASSURE THE LUMINAIRE HAS A NOMINAL POWER OF 74-80 WATTS AND A NOMINAL COLOR TEMPERATURE OF 4000K.

PROVIDE A LUMINAIRE WITH FACTORY-APPLIED BLACK FINISH. SUPPLY ONE OF THE FOLLOWING LUMINAIRES, OR AN APPROVED EQUAL:

1. LUMINIS EC801-L2W30R1-R2
2. BEACON SLD-36L-80-4K-T3

PAYMENT FOR ITEM 625, LUMINAIRE, MISC: POST TOP SOLID STATE (LED) DECORATIVE, AON14, 120V, SHALL BE AT THE CONTRACT UNIT PRICE OF EACH COMPLETE AND IN PLACE LUMINAIRE INCLUDING ALL HARDWARE AND CONNECTIONS.

ITEM 625, LIGHT POLE, MISC: DECORATIVE, ANCHOR BASE, 14' POLE WITH BANNER ARMS

IN ADDITION TO THE REQUIREMENTS OF 625, THIS ITEM OF WORK SHALL CONSIST OF FURNISHING AND INSTALLING COMPLETE DECORATIVE LIGHT POLE ASSEMBLY INCLUDING FLUTED POLE AND CLAMSHELL BASE COVER.

PROVIDE A LUMINAIRE WITH FACTORY-APPLIED BLACK FINISH.

FLUTED POLE SHALL BE THE FOLLOWING, OR AN APPROVED EQUAL:

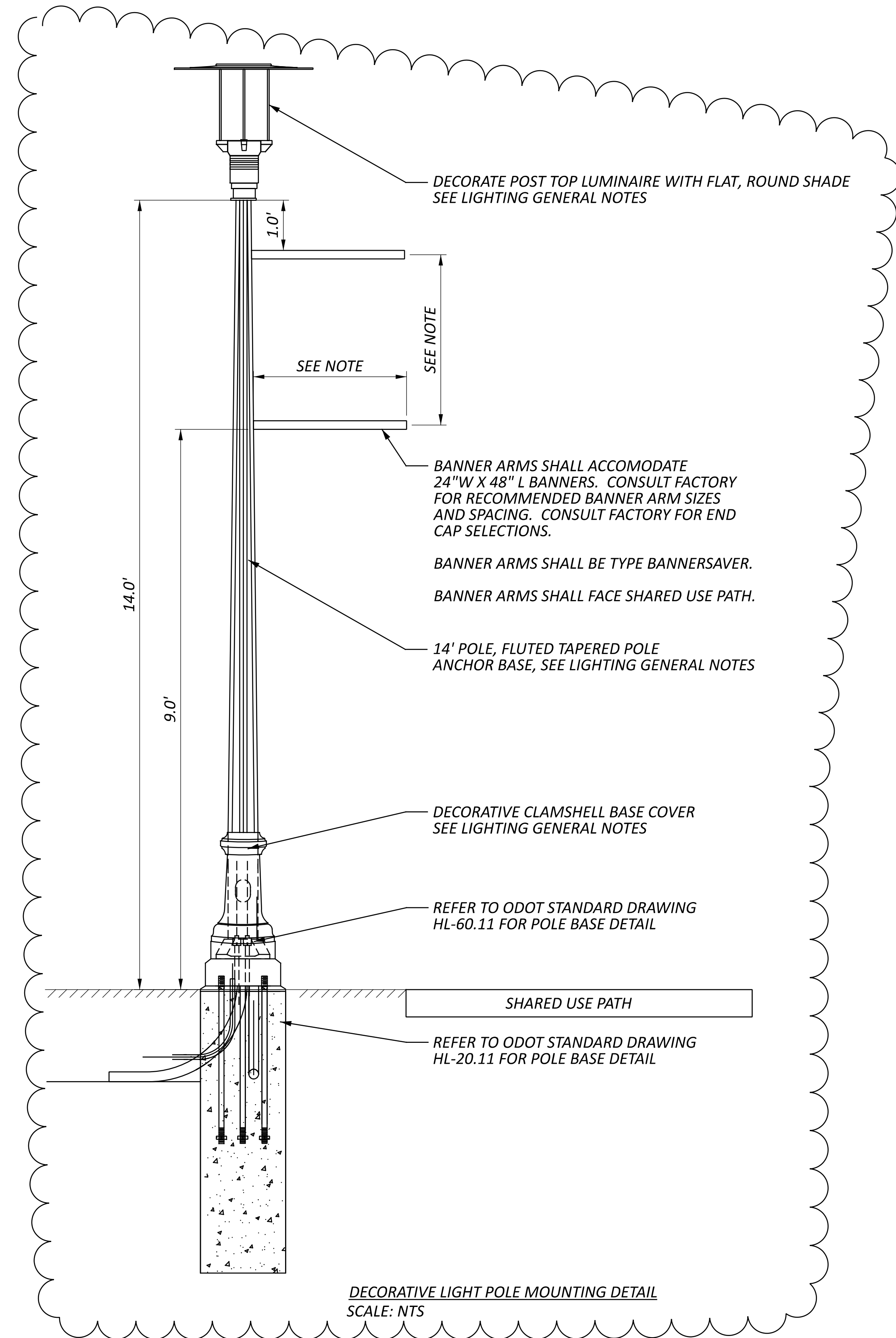
VALMONT #F-140040605V4-P9-DBL

CLAMSHELL BASE COVER SHALL BE ONE OF THE FOLLOWING, OR AN APPROVED EQUAL:

VALMONT # OC17AC-DBL

BANNER ARMS SHALL MATCH THE COLOR AND MATERIAL OF THE POLE. BANNER ARMS SHALL FACE TOWARDS THE SHARED USE PATH. BANNER ARMS SHALL ACCOMODATE 24" X 48" BANNERS. BANNER REFERENCE ARM NO. SPC7524, TYPE BANNERSAVER.

PAYMENT FOR ITEM 625, LIGHT POLE, MISC: DECORATIVE, ANCHOR BASE, 14' POLE, SHALL BE AT THE CONTRACT UNIT PRICE OF EACH COMPLETE AND INPLACE LIGHT POLE ASSEMBLY INCLUDING ALL HARDWARE AND CONNECTIONS.



DECORATIVE LIGHT POLE MOUNTING DETAIL
 SCALE: NTS

SHEET NO.	STATION		SIDE	POLE/PULL BOX NO.	625	625	625	625	625	625	625	625	625	625	
					CONNECTION, FUSED PULL APART	CONNECTION, UNFUSED PERMANENT	LIGHT POLE, MISC.-DECORATIVE, ANCHOR BASE, 14' POLE WITH BANNER ARMS	LIGHT POLE FOUNDATION, 24" X 6' DEEP	NO. 4 AWG 2400 VOLT DISTRIBUTION CABLE	NO. 10 AWG POLE AND BRACKET CABLE	1-1/2" DUCT CABLE WITH TWO NO. 4 AWG 2400 VOLT CABLES	LUMINAIRE, MISC.: POST TOP SOLID STATE (LED) DECORATIVE, AON14, 240V	TRENCH, 24" DEEP	GROUND ROD	UNDERGROUND WARNING/MARKING TAPE
	FROM	TO			EACH	EACH	EACH	EACH	FT	FT	FT	EACH	FT	EACH	FT
22	19+50	SR 308	RT	N1-1	2		1	1		33		1		1	
22	19+50	SR 308	RT	N1-1 - N1-2		18+58 SR 308					102		92		92
22	18+58	SR 308	RT	N1-2	2		1	1		33		1		1	
22	18+58	SR 308	RT	N1-2 - N1-3		17+65 SR 308					105		95		95
22	17+65	SR 308	RT	N1-3	2		1	1		33		1		1	
22	17+65	SR 308	RT	N1-3 - N1-4		16+79 SR 308					102		92		92
22	16+79	SR 308	RT	N1-4	2		1	1		33		1		1	
22	16+79	SR 308	RT	N1-4 - N1-5		15+99 SR 308					98		88		88
22	15+99	SR 308	RT	N1-5	2		1	1		33		1		1	
22	15+99	SR 308	RT	N1-5 - N1-6		15+04 SR 308					113		103		103
22	15+04	SR 308	RT	N1-6	2		1	1		33		1		1	
22	15+04	SR 308	RT	N1-6 - N1-7		14+18 SR 308					102		92		92
22	14+18	SR 308	RT	N1-7	2		1	1		33		1		1	
22	14+18	SR 308	RT	N1-7 - N1-8		13+31 SR 308					100		90		90
22	13+31	SR 308	RT	N1-8	2		1	1		33		1		1	
22	13+31	SR 308	RT	N1-8 - N1-9		12+34 SR 308					100		90		90
22	12+34	SR 308	RT	N1-9	2		1	1		33		1		1	
22	12+34	SR 308	RT - LT	N1-9 - PB-7*		106+34 SR 229					137		127		127
22	106+34	SR 229	LT	PB-7*											
22	106+34	SR 229	LT - RT	PB-7* - PB-6*		106+31 SR 229			237						
22	106+31	SR 229	RT	PB-6*											
22	106+31	SR 229	RT	PB-6* - PB-5*		101+42 SR 229					125		115		115
22	101+42	SR 229	RT	PB-5*											
22	101+42	SR 229	RT - LT	PB-5* - PB-4*		101+29 SR 229			273						
22	101+29	SR 229	LT	PB-4*											
22	101+29	SR 229	LT	PB-4* - CC-L*		101+21 SR 229			72				10		10
TOTALS CARRIED TO GENERAL SUMMARY					18	12	9	9	582	297	1084	9	994	9	994

KNO-115984 PART 2
LIGHTING SUBSUMMARY

DESIGN AGENCY

 143 Engineers
 DESIGNER
CMB
 REVIEWER
 CFD 10-03-23
 PROJECT ID
 117127
 SHEET TOTAL
 P.22 | 24