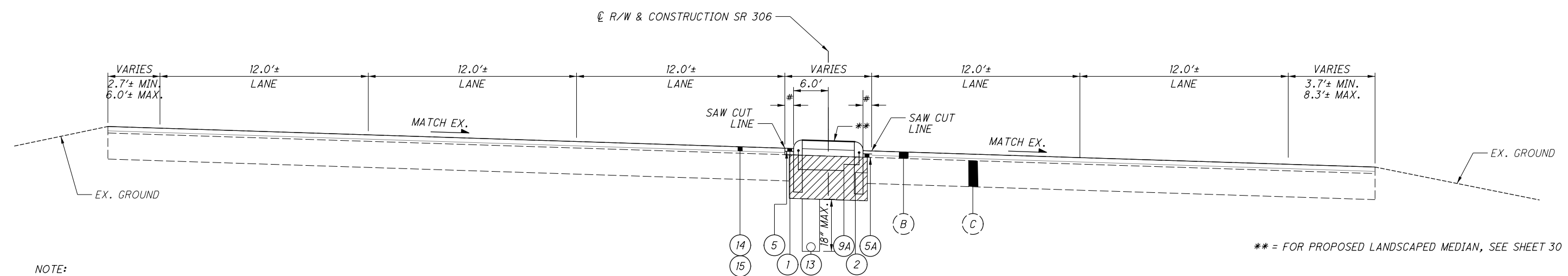


# = VARIES, MINIMUM 2' FROM EDGE OF PROPOSED MEDIAN  
 Δ = FOR CONCRETE MEDIAN DETAILS, SEE SHEET 28

EXISTING SECTION - SR 306 (SOUTH OF PROJECT)  
 STA. 267+00.00 TO STA. 274+00.00 (RESURFACING LIMITS)  
 STA. 268+99.50 TO STA. 273+35.00 (MEDIAN LIMITS)



\*\* = FOR PROPOSED LANDSCAPED MEDIAN, SEE SHEET 30

EXISTING SECTION - SR 306 (NORTH OF PROJECT)  
 STA. 280+75.00 TO STA. 286+50.00 (RESURFACING LIMITS)  
 STA. 281+33.10 TO STA. 284+78.00 (MEDIAN LIMITS)

EXISTING PAVEMENT BUILDUP UNDER THE LANDSCAPED MEDIAN IS UNKNOWN. TEMPORARY PAVEMENT PLACED DURING MAINTENANCE OF TRAFFIC SHALL REMAIN IN THE AREAS ADJACENT TO THE CURB, AS NEEDED. PROPOSED UNDERDRAIN SHALL BE PLACED BEFORE PLACING THE TEMPORARY PAVEMENT FOR MAINTAINING TRAFFIC.

NOTE:  
 PAVEMENT PLANING SHALL BE A MINIMUM DEPTH OF 1/2" WITH A UNIFORM CROSS SLOPE OF 0.016.

TYPICAL SECTIONS

LAK - 306 - 5.18

O:\Transportation\Projects\000T\District 12\LAK306\_0518\04094\Design\Roadway\Sheets\04094\_GY001.dgn 4/20/2021 7:57:24 AM Akkuraju

O:\Transportation\Projects\000T\DisTrct 12\LAK306\_0518\04094\Design\Roadway\Sheets\04094\_GG001.dgn 4/20/2021 7:57:30 AM Aakuraju

SHEET NUM.										PART.	ITEM	ITEM	GRAND	UNIT	DESCRIPTION	SEE SHEET NO.	CALCULATED	AA	CHECKED	EAK										
6	25	26	37	\$0518CEQ 001	OFFICE CALCS	01/IMS/BR	EXT	TOTAL																						
ROADWAY																														
LS										LS	201	11000	LS		CLEARING AND GRUBBING															
10										10	SPECIAL	20120010	10	EACH	TREE REMOVED, 4"-12"						6									
	1									1	202	20010	1	EACH	HEADWALL REMOVED															
							2,003	2,003		2,003	202	23000	2,003	SY	PAVEMENT REMOVED															
							240	240		240	202	23500	240	SY	WEARING COURSE REMOVED															
	571									571	202	30600	571	SY	CONCRETE MEDIAN REMOVED															
	697									697	202	32000	697	FT	CURB REMOVED															
	92									92	202	35100	92	FT	PIPE REMOVED, 24" AND UNDER															
	667									667	202	38000	667	FT	GUARDRAIL REMOVED															
	2									2	202	58200	2	EACH	INLET REMOVED															
90										90	SPECIAL	20270110	90	FT	PIPE CLEANOUT, 24" AND UNDER						6									
							427			427	203	10000	427	CY	EXCAVATION															
							223			223	203	20000	223	CY	EMBANKMENT															
								2,113		2,113	204	10000	2,113	SY	SUBGRADE COMPACTION															
	300									300	606	15050	300	FT	GUARDRAIL, TYPE MGS															
	187.5									187.5	606	15150	187.5	FT	GUARDRAIL, TYPE MGS HALF POST SPACING															
	37.5									37.5	606	15250	37.5	FT	GUARDRAIL, TYPE MGS QUARTER POST SPACING															
	5									5	606	26550	5	EACH	ANCHOR ASSEMBLY, MGS TYPE T															
	2									2	606	35002	2	EACH	MGS BRIDGE TERMINAL ASSEMBLY, TYPE 1															
	2									2	606	35102	2	EACH	MGS BRIDGE TERMINAL ASSEMBLY, TYPE 2															
	3,009									3,009	608	11000	3,009	SF	4-1/2" CONCRETE WALK															
	670									670	608	52000	670	SF	CURB RAMP															
	1									1	625	31510	1	EACH	PULL BOX REMOVED															
EROSION CONTROL																														
84							1,070			1,070	601	20000	1,070	SY	CRUSHED AGGREGATE SLOPE PROTECTION															
759										759	659	00300	759	CY	TOPSOIL															
38										38	659	14000	38	SY	SEEDING AND MULCHING															
0.11										0.11	659	20000	0.11	TON	REPAIR SEEDING AND MULCHING															
0.16										0.16	659	31000	0.16	ACRE	COMMERCIAL FERTILIZER															
5										5	659	35000	5	MGAL	LIME															
										4,500	832	30000	4,500	EACH	WATER															
															EROSION CONTROL															
DRAINAGE																														
		468								468	605	11100	468	FT	6" SHALLOW PIPE UNDERDRAINS															
		569								569	605	14000	569	FT	6" BASE PIPE UNDERDRAINS															
									42	42	605	31100	42	FT	AGGREGATE DRAINS															
		205								205	611	00510	205	FT	6" CONDUIT, TYPE F FOR UNDERDRAIN OUTLETS															
		49								49	611	05900	49	FT	15" CONDUIT, TYPE B															
		10								10	611	10400	10	FT	24" CONDUIT, TYPE B															
		53								53	611	96600	53	FT	CONDUIT, BORED OR JACKED 6" , TYPE F															
		1								1	611	98150	1	EACH	CATCH BASIN, NO. 3															
		1								1	611	99154	1	EACH	INLET RECONSTRUCTED TO GRADE															
		1								1	611	99574	1	EACH	MANHOLE, NO. 3															
		2								2	611	99710	2	EACH	PRECAST REINFORCED CONCRETE OUTLET															
PAVEMENT																														
							10,162	10,162		10,162	254	01000	10,162	SY	PAVEMENT PLANING, ASPHALT CONCRETE (1.5" THICK)															
							346	346		346	304	20000	346	CY	AGGREGATE BASE															
										133	133	407	10000	133	GAL	TACK COAT														
										155	155	407	13900	155	GAL	TACK COAT, 702.13														
										495	495	441	50000	495	CY	ASPHALT CONCRETE SURFACE COURSE, TYPE 1, (448), PG64-22														
										99	99	441	50300	99	CY	ASPHALT CONCRETE INTERMEDIATE COURSE, TYPE 2, (448)														
										254	254	SPECIAL	45131000	254	FT	PRESSURE RELIEF JOINT, TYPE B					29									
							1,702	1,702		1,702	452	13010	1,702	SY	9" NON-REINFORCED CONCRETE PAVEMENT, CLASS QC IP															
	616									616	609	16000	616	FT	CURB, TYPE 2-B															
	38									38	609	24510	38	FT	CURB, TYPE 4-C															
	698									698	609	26000	698	FT	CURB, TYPE 6															
	482									482	609	72000	482	SY	CONCRETE MEDIAN															

**GENERAL SUMMARY**

**LAK -306 -5.18**