
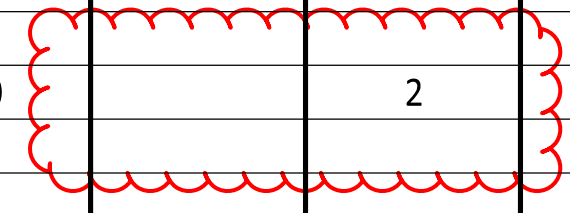


SHEET NUM.										PART.		ITEM	ITEM EXT	GRAND TOTAL	UNIT	DESCRIPTION	SEE SHEET NO.
4-5	6-9	11	12							01/SAF/21	02/IMS/21						
ROADWAY																	
LS										LS		201	11000	LS		CLEARING AND GRUBBING	
		320								80	240	202	30700	320	FT	CONCRETE BARRIER REMOVED	
		3,777								2,069	1,709	202	38000	3,777	FT	GUARDRAIL REMOVED	
		23.76								5.94	17.82	203	20000	23.76	CY	EMBANKMENT	
		142.95								124.28	18.67	209	15001	142.95	STA	RESHAPING UNDER GUARDRAIL, AS PER PLAN	5
		150								150		606	13000	150	FT	GUARDRAIL, TYPE 5	
		13,425								12,088	1,338	606	15050	13,425	FT	GUARDRAIL, TYPE MGS	
		25									25	606	15150	25	FT	GUARDRAIL, TYPE MGS HALF POST SPACING	
		2								1	1	606	26050	2	EACH	ANCHOR ASSEMBLY, MGS TYPE B	
		12								5	7	606	26150	12	EACH	ANCHOR ASSEMBLY, MGS TYPE E (MASH)	
		11								4	7	606	26550	11	EACH	ANCHOR ASSEMBLY, MGS TYPE T	
		2									2	606	35002	2	EACH	MGS BRIDGE TERMINAL ASSEMBLY, TYPE 1	
		1									1	606	35102	1	EACH	MGS BRIDGE TERMINAL ASSEMBLY, TYPE 2	
		50									50	622	10160	50	FT	CONCRETE BARRIER, SINGLE SLOPE, TYPE D	
		3									3	622	25000	3	EACH	CONCRETE BARRIER END SECTION, TYPE D	
		1									1	622	25050	1	EACH	CONCRETE BARRIER, END ANCHORAGE, REINFORCED, TYPE D	
			600								600	622	41100	600	FT	PORTABLE BARRIER, UNANCHORED	
EROSION CONTROL																	
										LS		832	15000	LS		STORM WATER POLLUTION PREVENTION PLAN	
										LS		832	15002	LS		STORM WATER POLLUTION PREVENTION INSPECTIONS	
										LS		832	15010	LS		STORM WATER POLLUTION PREVENTION INSPECTION SOFTWARE	
										1,000		832	30000	1,000	EACH	EROSION CONTROL	
PAVEMENT																	
		397.15								345.29	51.86	441	70801	397.15	CY	ASPHALT CONCRETE INTERMEDIATE COURSE, TYPE 1, (449), (UNDER GUARDRAIL), AS PER PLAN, 2"	5
		36.3									36.3	609	24510	36.3	FT	CURB, TYPE 4-C	
TRAFFIC CONTROL																	
		5								5		620	00500	5	EACH	DELINEATOR, POST GROUND MOUNTED, TYPE D	
		7									7	620	00501	7	EACH	DELINEATOR, POST GROUND MOUNTED, AS PER PLAN, TYPE C	
		139								122	17	626	00110	139	EACH	BARRIER REFLECTOR, TYPE 2, ONE WAY	
50										50		630	97800	50	SF	SIGNING, MISC.:ADDITIONAL SIGNS, GROUND MOUNTED, AS DIRECTED BY THE ENGINEER	
MAINTENANCE OF TRAFFIC																	
		80								80		614	11110	80	HOUR	LAW ENFORCEMENT OFFICER WITH PATROL CAR FOR ASSISTANCE	
			2								2	614	12380	2	EACH	WORK ZONE IMPACT ATTENUATOR, 24" WIDE HAZARDS, (UNIDIRECTIONAL)	
		4								4		614	12484	4	EACH	WORK ZONE INCREASED PENALTIES SIGN	
			13								13	614	13310	13	EACH	BARRIER REFLECTOR, TYPE 1, ONE WAY	
			13								13	614	13350	13	EACH	OBJECT MARKER, ONE WAY	
		12								12		614	18601	12	SNMT	PORTABLE CHANGEABLE MESSAGE SIGN, AS PER PLAN	7
		12								12		808	18700	12	SNMT	DIGITAL SPEED LIMIT (DSL) SIGN ASSEMBLY	
INCIDENTALS																	
										LS		614	11000	LS		MAINTAINING TRAFFIC	
										LS		623	10000	LS		CONSTRUCTION LAYOUT STAKES AND SURVEYING	
										LS		624	10000	LS		MOBILIZATION	


GENERAL SUMMARY

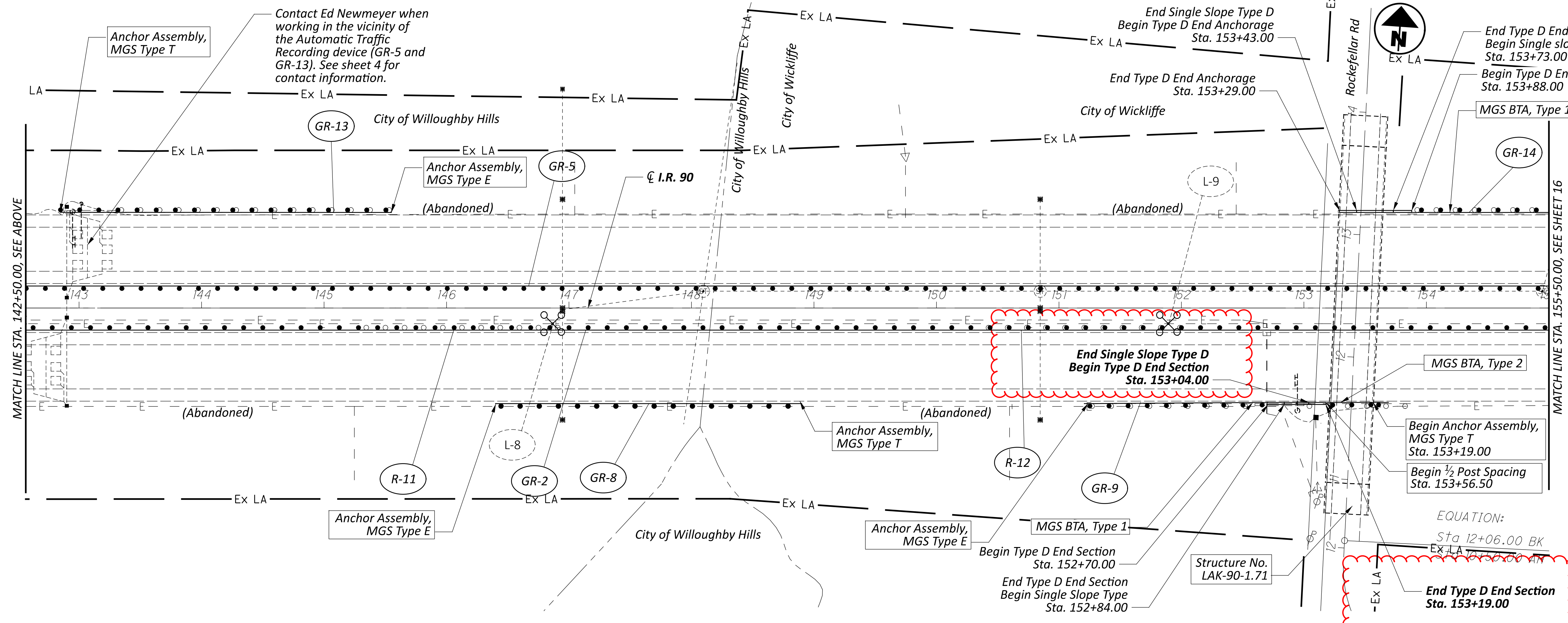
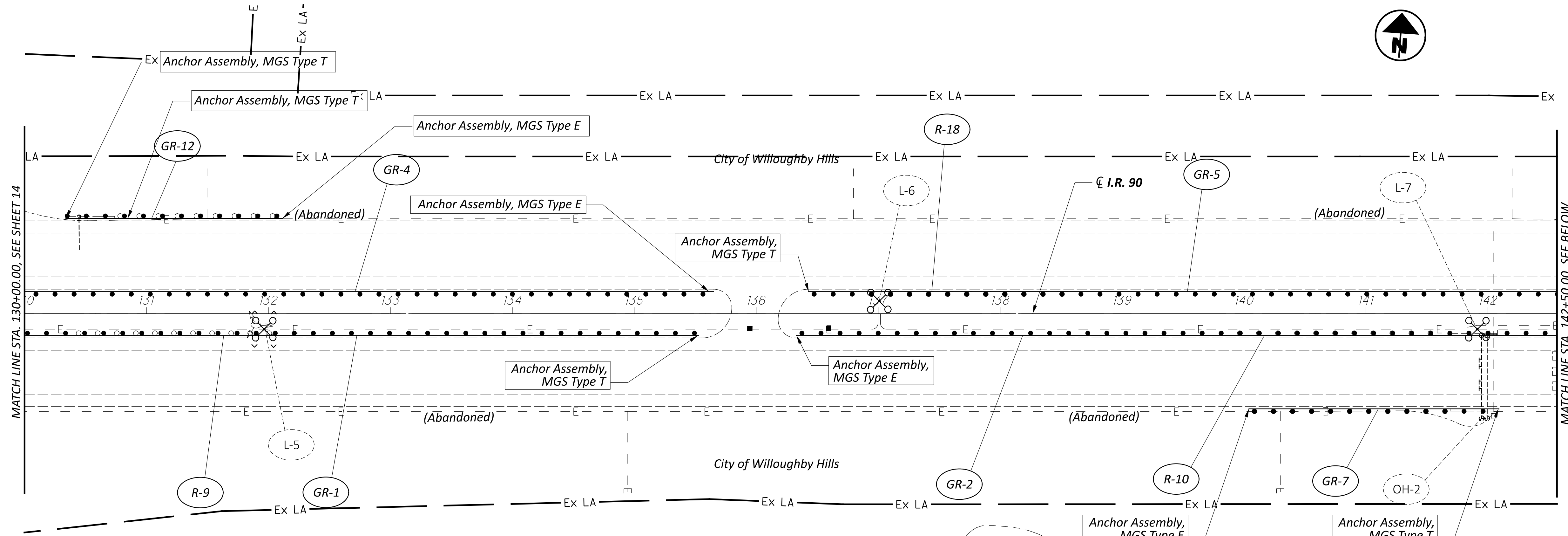
DESIGN AGENCY

 DESIGNER
 JDA
 REVIEWER
 DAB 10/05/23
 PROJECT ID
 119563
 SHEET TOTAL
 10 | 17

REF. NO.	SHEET NO.	PLAN SPLIT NO.	STATION TO STATION		202	209	441	606	606	606	606	606	606	606	626	203	606	622	622	622	620	620	609	202	
			FROM	TO	FT	STA	CY	FT	FT	EACH	EACH	EACH	EACH	EACH	EACH	EACH	CY	FT	FT	EACH	EACH	EACH	EACH	FT	FT
Eastbound (Inside Shoulder)																									
GR-1	15, 16	1	109+56.21	135+52.65		24	66.68	2337.5																	
GR-2	16, 17	1	136+33.00	161+72.21		25.5	70.85	2487.5								2.97								40	
GR-3	17	1	10+38.95	22+86.60		12.5	34.73	1200.0																	
Westbound (Inside Shoulder)																									
GR-4	15, 16	1	109+88.89	135+64.73		26.38	73.28	2587.5																	
GR-5	16, 17	1	136+42.20	161+87.49		25.5	70.85	2487.5									150							40	
GR-6	17	1	10+47.50	20+78.41		10.4	28.9	987.5		1															
Eastbound (Outside Shoulder)																									
GR-7	16	2	140+04.18	141+68.79		165	2.13	5.91	150.0																
GR-8	16	2	146+40.00	148+89.73		250	2.5	6.95	187.5																
GR-9	16	2	151+22.31	153+74.87		212.5	1.63	4.52	75.0		25														
Westbound (Outside Shoulder)																									
GR-10	15	2	116+01.73	118+01.51		200	2.5	6.95	187.5																
GR-11	15	2	121+58.00	127+29.74		381	3.9	10.84	337.5		1														
GR-12	16	2	130+74.00	132+11.50		137.5	1.88	5.21	125.0																
GR-13	16	2	143+30.00	145+55.13		225	2.75	7.65	212.5																
GR-14	16, 17	2	153+88.00	155+25.28		137.5	1.38	3.83	62.5																
Guardrail Removal Eastbound (Inside Shoulder)																									
R-7	15	1	120+35.00	121+97.58		162.5																			
R-8	15	1	125+36.00	127+06.00		170																			
R-9	15	1	130+41.00	132+05.95		168																			
R-10	16	1	139+92.47	141+66.13		175																			
R-11	16	1	145+30.00	146+96.79		165																			
R-12	16	1	150+37.50	152+04.00		166																			
R-13	17	1	155+18.00	156+85.00		167																			
R-14	17	1	160+06.00	161+72.00		166																			
R-15	17	1	13+15.41	14+76.57		162.5																			
Guardrail Removal Westbound (Inside Shoulder)																									
R-16	15	1	110+89	112+65		225.5																			
R-17	15	1	116+01	117+76		175																			
R-18	16	1	136+91	138+56		166																			
TOTALS CARRIED TO GENERAL SUMMARY						3777	142.95	397.15	13425	25	2	12	11	2	1	139	23.76	150	50	1	3	5	7	36.3	320

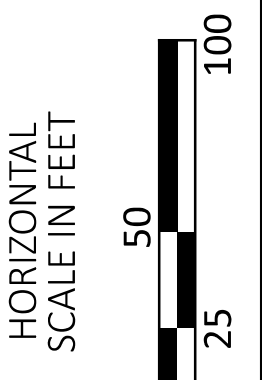
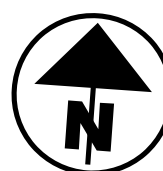


SUBSUMMARY

DESIGN AGENCY

 DESIGNER
JDA
 REVIEWER
DAB 10/05/23
 PROJECT ID
119563
 SHEET TOTAL
 11 | 17



Contact Ed Newmeyer when working in the vicinity of the Automatic Traffic Recording device (GR-5 and GR-13). See sheet 4 for contact information.



PLAN SHEET
STA. 130+00.00 TO STA. 155+50.00

DESIGN AGENCY



DESIGNER	JDA
REVIEWER	DAB
DATE	10/05/23
PROJECT ID	119563
SHEET	16
TOTAL	17

End Single Slope Type D
Begin Type D End Section
Sta. 153+04.00

End Type D End Section
Sta. 153+19.00

EQUATION:
Sta 12+06.00 BK
EX LA 153+00.00 AN