

# PAGE 1

## BUCKEYE REC

BLUE: Remove

RED: Construction

GREEN: Existing

RECEIVED  
JUL 18 2024  
ODOT DISTRICT 9  
PLANNING & ENGINEERING

(VBF) DENOTES LOCATION OF VEGETATED BIOFILTER

QUANTITIES ARE INCLUDED IN REFERENCE NUMBER I-R FOR THE REMOVAL OF EXISTING PAVEMENT, REGRADING TO ENSURE A DRAINABLE SURFACE AND SEEDING AND MULCHING OF THE AREA SHOWN.

ROCK CHANNEL PROTECTION,  
TYPE C WITH FILTER  
(156' x 12.5' x 1.5' / 27 = 108.33 CY)

SEEDING AND EROSION CONTROL  
WITH TURF REINFORCING MAT, TYPE T  
(250' x 14.5' / 9 = 402.78 SY)

DITCH EROSION PROTECTION (VBF)  
(582' x 14.5' / 9 = 837.67 SY)

ROCK CHANNEL PROTECTION,  
TYPE C WITH FILTER  
(56' x 9' x 1.5' / 27 = 28 CY)

Location 1  
STA 175+00 @ 26' LT  
Remove BREC Pole 51AY17  
and Spans

Location 2  
STA 177+01 @ 5' RT  
Remove BREC Pole 51AY16  
and Spans

Location 3  
STA 178+50 @ 31' LT  
Remove BREC Pole 51AY15  
and Spans

Location 4  
STA 180+37 @ 68' LT  
Remove BREC Pole 51AY14  
and Spans

Location 5  
STA 181+90 @ 86' LT  
Remove BREC Pole 51AY13  
and Spans

Location 6  
STA 179+47 @ 123' RT  
Remove BREC Pole  
51AY15-1 and Spans

Location 7  
STA 182+18 @ 203' RT

(LF) DESIGNATES  
LEACH FIELD

U:\173608714\LA\75923\roadway\sheet\75923GP006-2.A.dgn 3/23/2023 11:05:30 AM SLParker

PLAN - S.R. 7  
STA. 171+00 TO STA. 183+00

LAW-7-2.17

33  
297

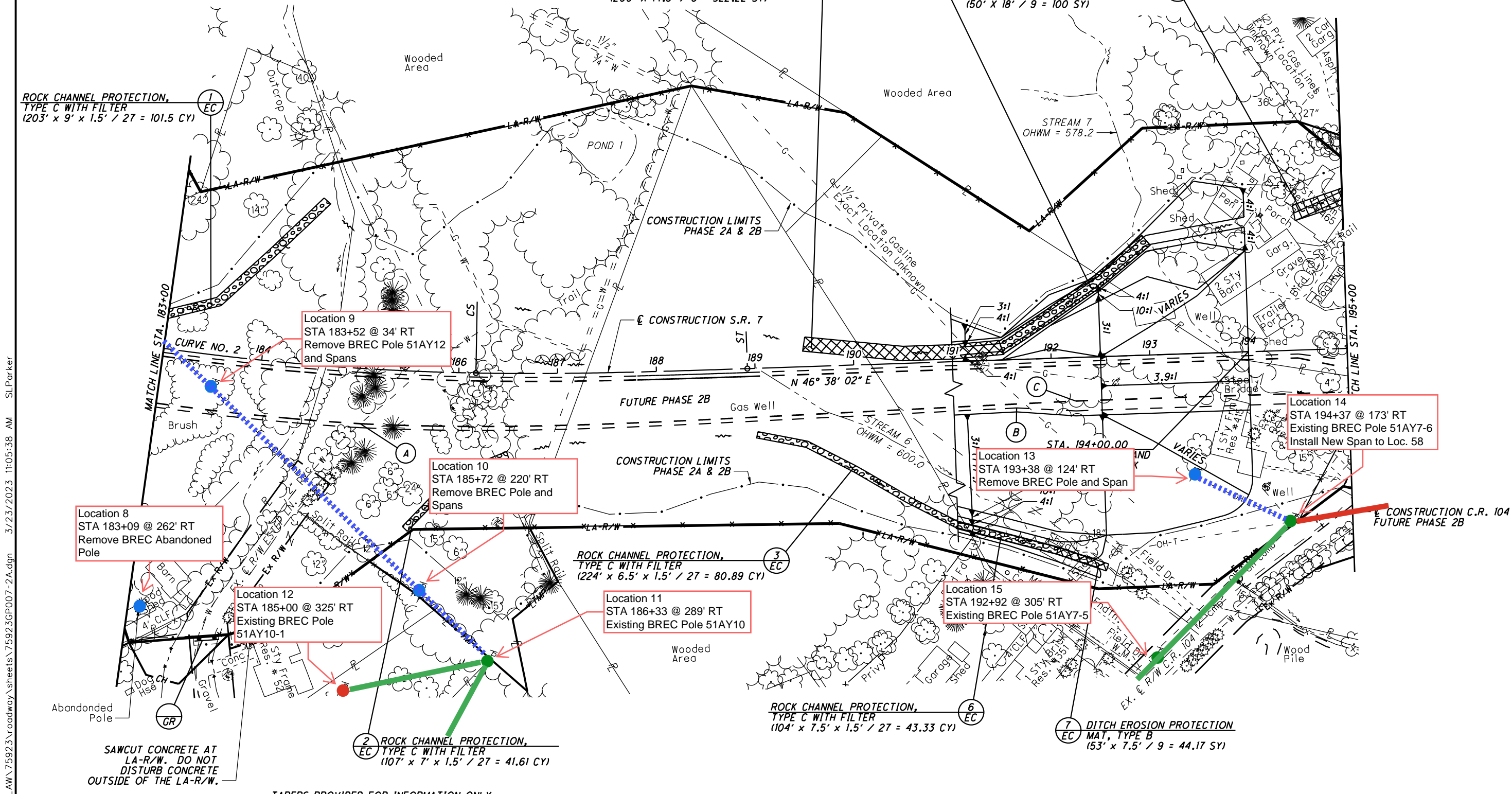


CALCULATED SLP CHECKED ALB

PLAN - S.R. 7  
STA. 183+00 TO STA. 195+00

LAW-7-72.17

35  
297



U:\173608714\LAW\759233\roadway\_sheets\759233\007-2A.dgn 3/23/2023 11:05:38 AM SLParker

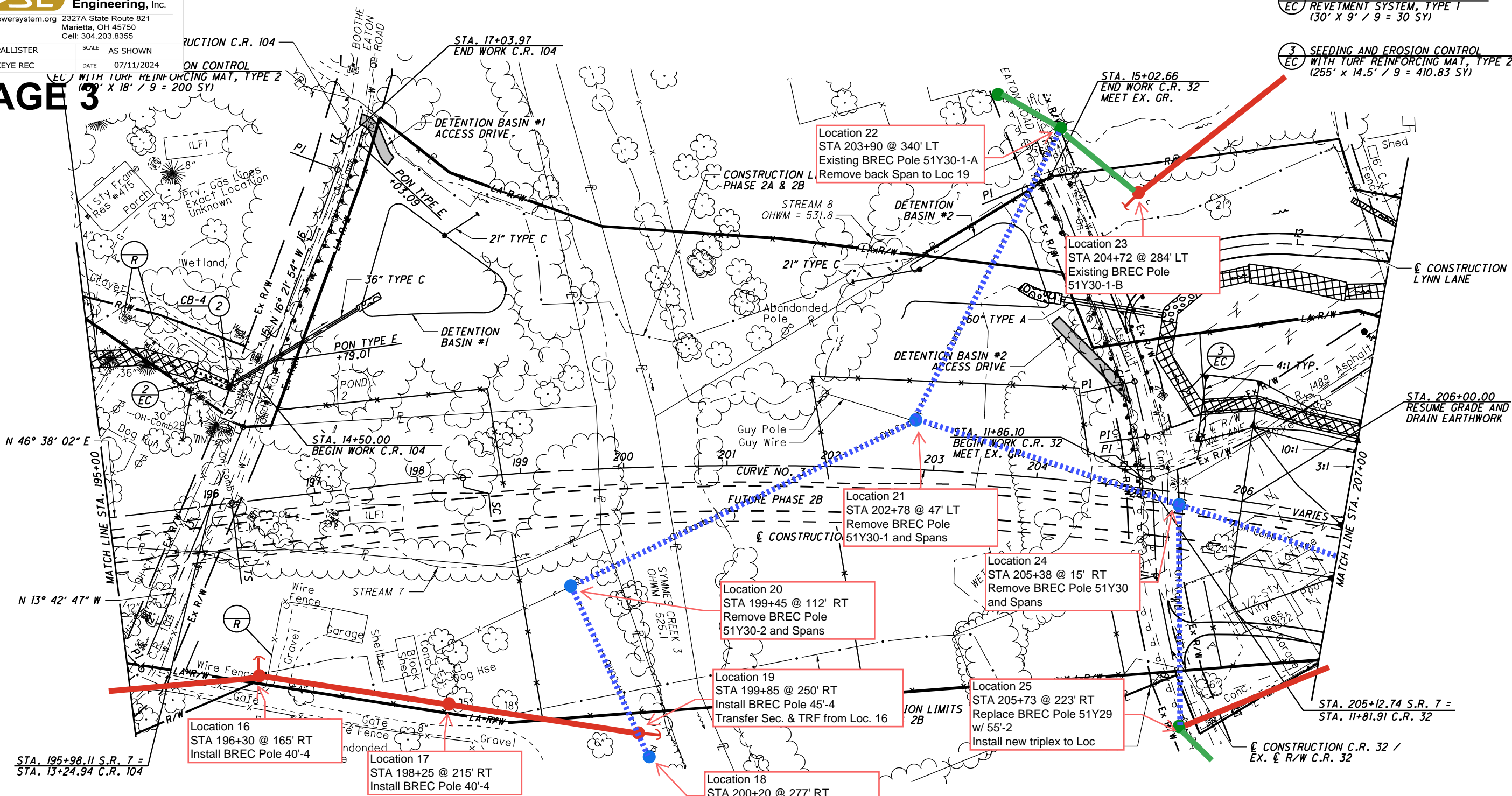
- (A) - STA. 185+03.46 BEGIN PAVEMENT TAPER, 56' RT.
- (B) - STA. 191+63.46 BEGIN SHOULDER TAPER, 49' RT.
- (C) - STA. 192+23.46 END PAVEMENT TAPER, 44' RT. END SHOULDER TAPER, 54' RT.

FOR PROFILE, SEE SHEET 36

- 2 ARTICULATING CONCRETE BLOCK REVETMENT SYSTEM, TYPE 1 (30' X 9' / 9 = 30 SY)
- 3 SEEDING AND EROSION CONTROL WITH TURF REINFORCING MAT, TYPE 2 (255' X 14.5' / 9 = 410.83 SY)



U:\173608714\LA\75923\roadway\_sheets\75923GP008-2A.dgn 3/23/2023 11:05:52 AM SLParker



Location 16  
 STA 196+30 @ 165' RT  
 Install BREC Pole 40'-4

Location 17  
 STA 198+25 @ 215' RT  
 Install BREC Pole 40'-4

Location 18  
 STA 200+20 @ 277' RT  
 Remove BREC Pole 51AY30-3

Location 19  
 STA 199+85 @ 250' RT  
 Install BREC Pole 45'-4  
 Transfer Sec. & TRF from Loc. 16

Location 20  
 STA 199+45 @ 112' RT  
 Remove BREC Pole 51Y30-2 and Spans

Location 21  
 STA 202+78 @ 47' LT  
 Remove BREC Pole 51Y30-1 and Spans

Location 24  
 STA 205+38 @ 15' RT  
 Remove BREC Pole 51Y30 and Spans

Location 25  
 STA 205+73 @ 223' RT  
 Replace BREC Pole 51Y29 w/ 55'-2  
 Install new triplex to Loc

Location 23  
 STA 204+72 @ 284' LT  
 Existing BREC Pole 51Y30-1-B

Location 22  
 STA 203+90 @ 340' LT  
 Existing BREC Pole 51Y30-1-A  
 Remove back Span to Loc 19

**CURVE DATA**  
 S.R. 7  
 CURVE NO. 3

P.I. STA. 205+33.31	θs = 1° 58' 07"
Δ = 27° 30' 45" (RT)	Ls = 225.00'
Dc = 1° 45' 00"	Ts = 914.18'
R = 3,274.04'	LT = 150.01'
T = 683.24'	ST = 75.01'
L = 1,347.14'	e <sub>max</sub> = 4.60%
E = 70.53'	CS STA. 211+91.27
TS STA. 196+19.13	ST STA. 214+16.27
SC STA. 198+44.13	

**C.R. 104**

P.I. STA. 11+53.11	P.I. STA. 12+33.35
Δ = 2° 41' 45"	Δ = 4° 36' 08"
NO CURVE	NO CURVE
P.I. STA. 14+07.46	P.I. STA. 12+87.96
Δ = 2° 39' 07"	Δ = 9° 55' 50"
NO CURVE	NO CURVE
P.I. STA. 16+72.90	P.I. STA. 15+02.34
Δ = 4° 02' 33"	Δ = 0° 49' 53"
NO CURVE	NO CURVE

**C.R. 32**  
 P.I. STA. 10+98.09  
 Δ = 9° 00' 49"  
 NO CURVE

P.I. STA. 11+92.44  
 Δ = 5° 16' 18"  
 NO CURVE

FOR PROFILE, SEE SHEET 38  
 FOR LYNN LANE PLAN AND PROFILE, SEE SHEET 249  
 FOR CULVERT DETAIL, SEE SHEET 279  
 FOR STORM SEWER PROFILES, SEE SHEET 274  
 FOR DETENTION BASIN DETAILS, SEE SHEETS 292-294

(LF) DESIGNATES LEACH FIELD

PLAN - S.R. 7  
 STA. 195+00 TO STA. 207+00

LAW-7-2.17

DWN BY P. McALLISTER SCALE AS SHOWN 7"  
DWN FOR BUCKEYE REC DATE 07/11/2024  
UC = 1" = 40' 00" LT = 150.01'  
L = 1,347.14' ST = 75.01'  
E = 70.53' e<sub>max</sub> = 4.60%  
TS STA. 196+19.13 CS STA. 211+91.27  
SC STA. 198+44.13 ST STA. 214+16.27

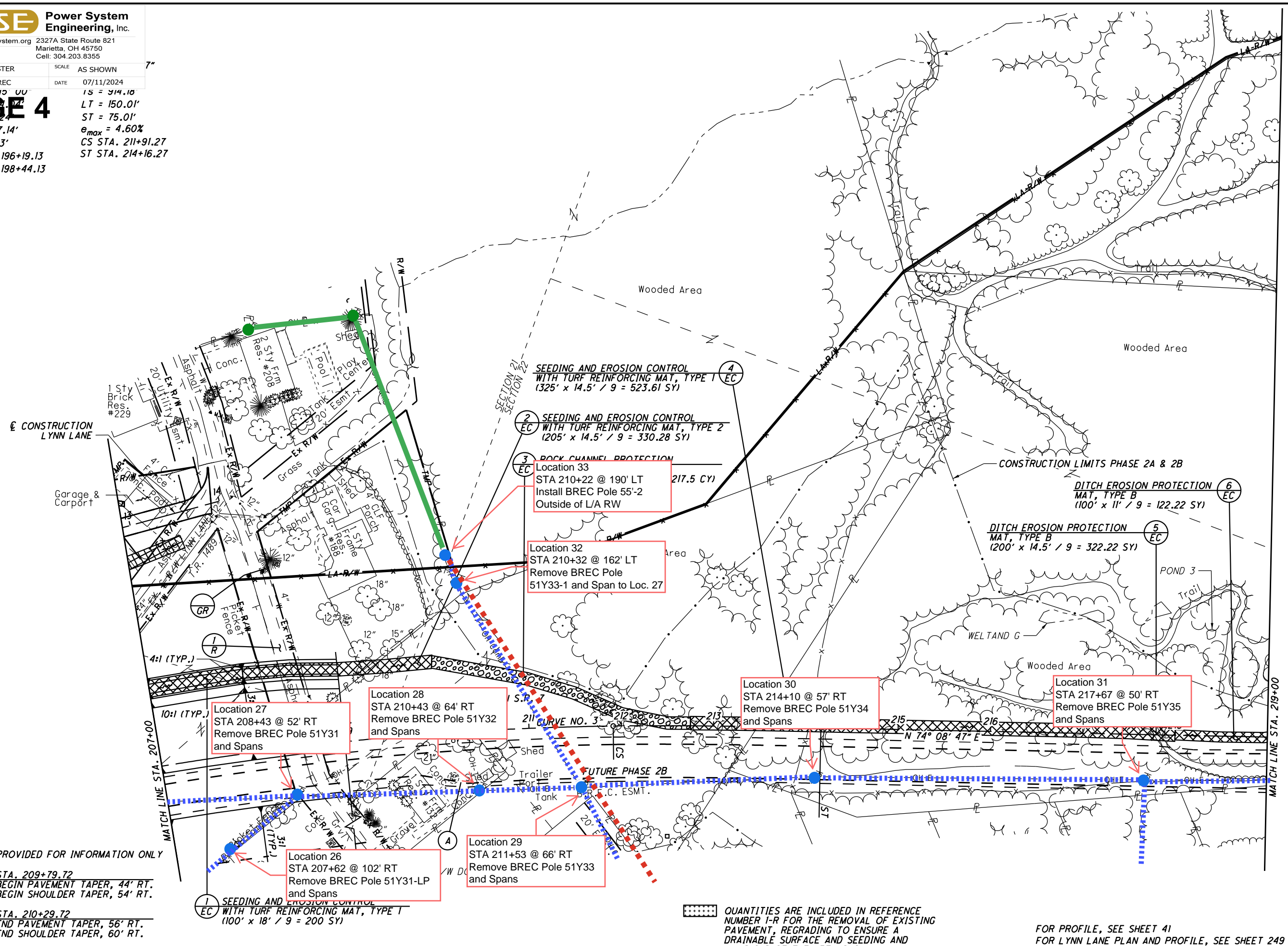
**PAGE 4**



PLAN - S.R. 7  
STA. 207+00 TO STA. 219+00 (NORTH)

LAW-7-2.17

39  
297



TAPERS PROVIDED FOR INFORMATION ONLY

(A) - STA. 209+79.72  
BEGIN PAVEMENT TAPER, 44' RT.  
BEGIN SHOULDER TAPER, 54' RT.

STA. 210+29.72  
END PAVEMENT TAPER, 56' RT.  
END SHOULDER TAPER, 60' RT.

1 SEEDING AND EROSION CONTROL WITH TURF REINFORCING MAT, TYPE 1 (100' x 18' / 9 = 200 SY)

Location 27  
STA 208+43 @ 52' RT  
Remove BREC Pole 51Y31 and Spans

Location 28  
STA 210+43 @ 64' RT  
Remove BREC Pole 51Y32 and Spans

Location 26  
STA 207+62 @ 102' RT  
Remove BREC Pole 51Y31-LP and Spans

Location 29  
STA 211+53 @ 66' RT  
Remove BREC Pole 51Y33 and Spans

Location 32  
STA 210+32 @ 162' LT  
Remove BREC Pole 51Y33-1 and Span to Loc. 27

3 ROCK CHANNEL PROTECTION Location 33 STA 210+22 @ 190' LT Install BREC Pole 55'-2 Outside of L/A RW 217.5 CY

2 SEEDING AND EROSION CONTROL WITH TURF REINFORCING MAT, TYPE 2 (205' x 14.5' / 9 = 330.28 SY)

4 SEEDING AND EROSION CONTROL WITH TURF REINFORCING MAT, TYPE 1 (325' x 14.5' / 9 = 523.61 SY)

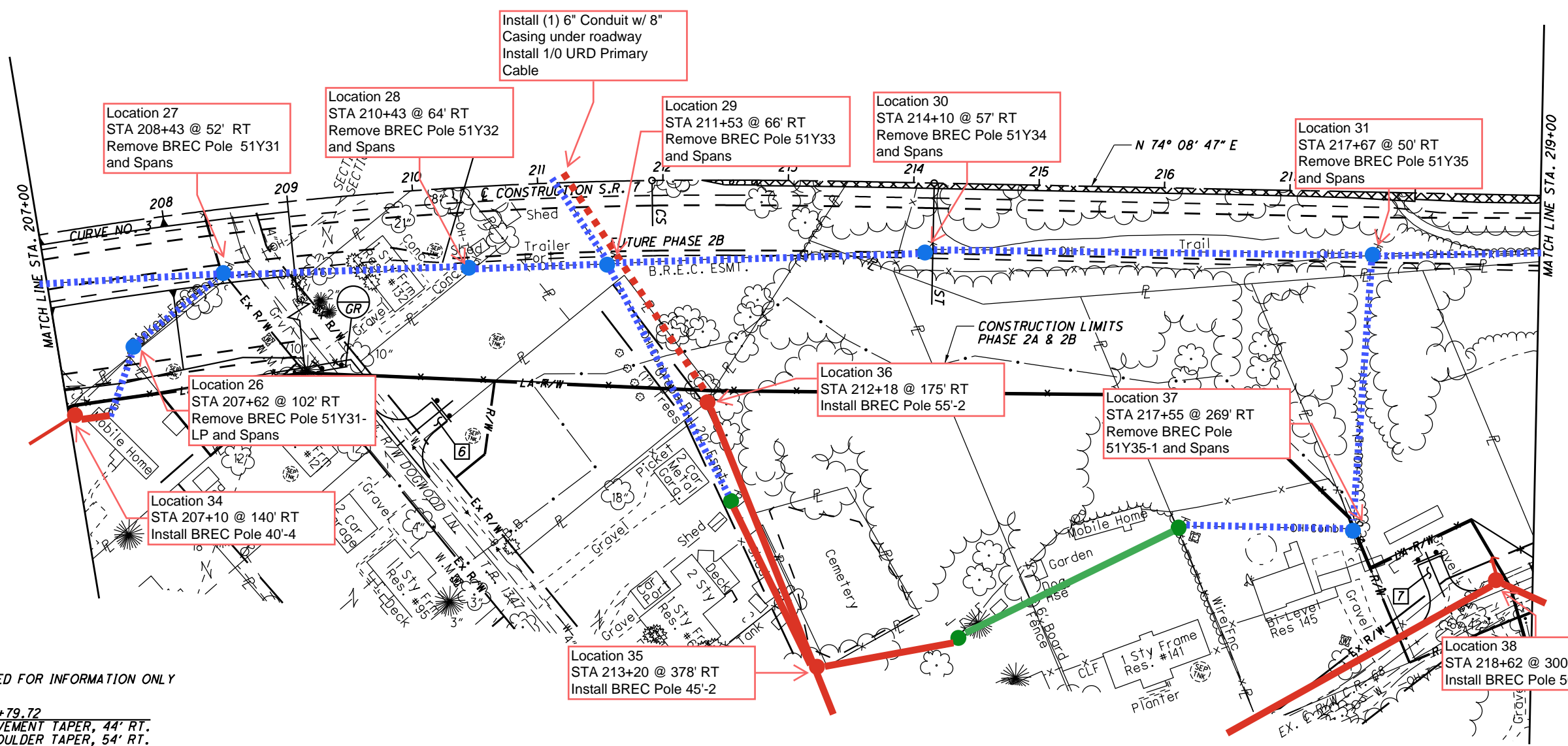
5 DITCH EROSION PROTECTION MAT, TYPE B (200' x 14.5' / 9 = 322.22 SY)

6 DITCH EROSION PROTECTION MAT, TYPE B (100' x 11' / 9 = 122.22 SY)

QUANTITIES ARE INCLUDED IN REFERENCE NUMBER I-R FOR THE REMOVAL OF EXISTING PAVEMENT, REGRADE TO ENSURE A DRAINABLE SURFACE AND SEEDING AND MULCHING OF THE AREA SHOWN.

FOR PROFILE, SEE SHEET 41  
FOR LYNN LANE PLAN AND PROFILE, SEE SHEET 249

U:\173608714\LA\75923\roadway\_sheets\75923\09-2.dgn 3/23/2023 11:05:59 AM SLParker



TAPERS PROVIDED FOR INFORMATION ONLY

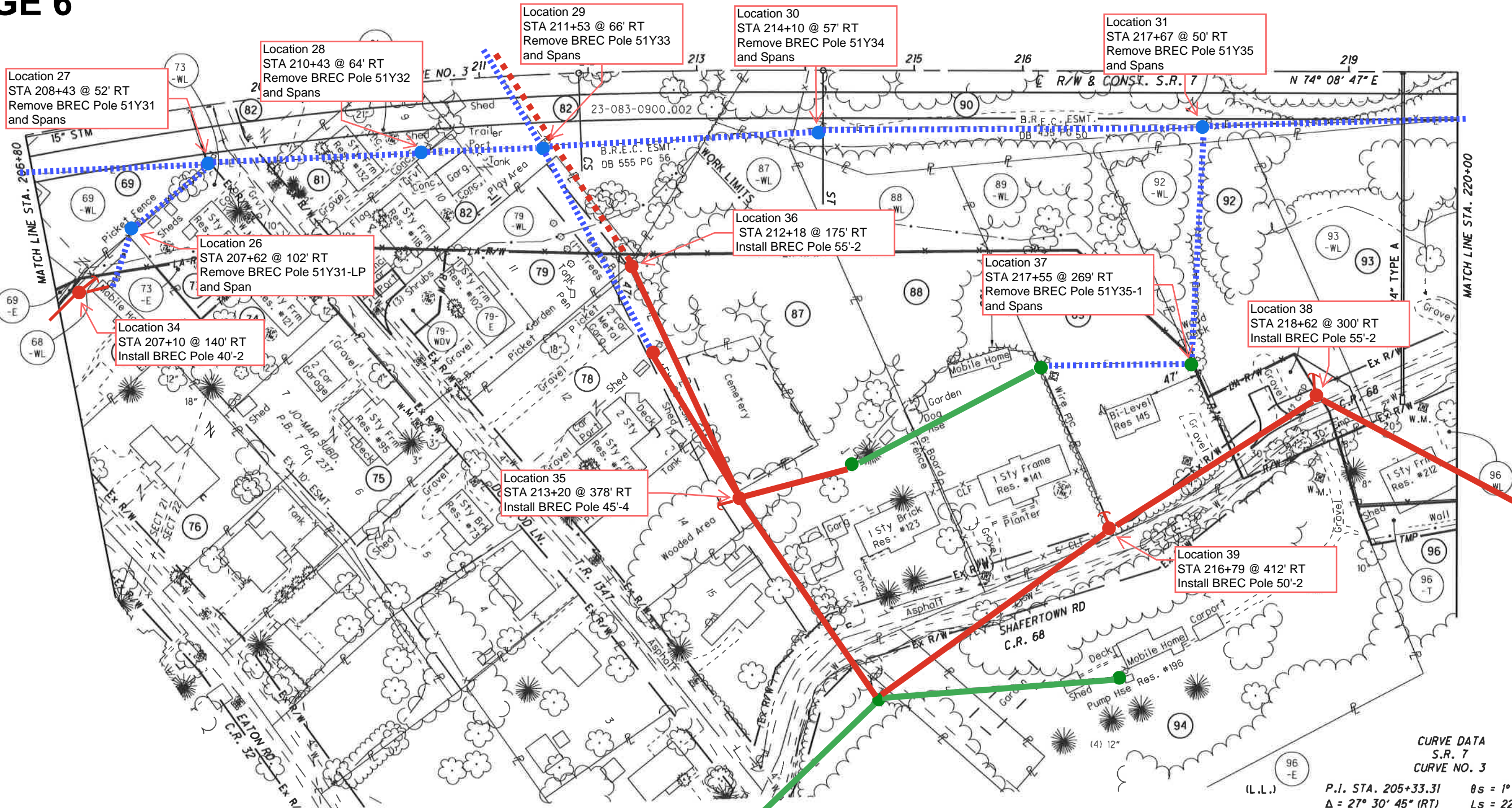
- ① - STA. 209+79.72  
BEGIN PAVEMENT TAPER, 44' RT.  
BEGIN SHOULDER TAPER, 54' RT.
- ② - STA. 210+29.72  
END PAVEMENT TAPER, 56' RT.  
END SHOULDER TAPER, 60' RT.

U:\17360874\LAW\75923\roadway\_sheets\75923\009A-2A.dgn 3/23/2023 11:06:02 AM SLParker

LAWRENCE COUNTY  
UNION TOWNSHIP  
SECT. 21 & 22, T-1-N, R-16-W

FOR LOCATION AND TYPE OF LA-R/W FENCE  
SEE THE TABLE IN THE ROADWAY PLAN

**PAGE 6**



- |                                    |                                  |   |                                  |
|------------------------------------|----------------------------------|---|----------------------------------|
| (68) WALTER L. PLUMLEY             | (76) KAREN EVANS                 | (87) JAMES A. MONTGOMERY                    | (93) JAMES H. & ROSA SMITH       |
| (69) WALTER L. & BRENDA H. PLUMLEY | (78) NANCY MCKENZIE              | (88) JAMES G. SMITH                         | (94) CHARLES W. & MAZIE L. RULEN |
| (73) STATE OF OHIO                 | (79) STATE OF OHIO               | (89) FRANCIS JAMES BUDD & BRANDY RENAY BUDD | (96) JASPER & DELLA M. RIGNEY    |
| (74) MARY R. SMITH                 | (81) RAYMOND R. & ALMA J. MCHONE | (90) BILL A. BROWN                          |                                  |
| (75) DONNA M. ADKINS               | (82) STATE OF OHIO               | (92) JOHNNY E. & JANIE E. SMITH             |                                  |

CURVE DATA  
S.R. 7  
CURVE NO. 3

P.I. STA. 205+33.31	θs = 1° 58' 07"
Δ = 27° 30' 45" (RT)	Ls = 225.00'
Dc = 1° 45' 00"	Ts = 914.18'
R = 3,274.04'	LT = 150.01'
T = 683.24'	ST = 75.01'
L = 1,347.14'	CS STA. 211+91.27
E = 70.53'	ST STA. 214+16.27
TS STA. 196+19.13	
SC STA. 198+44.13	

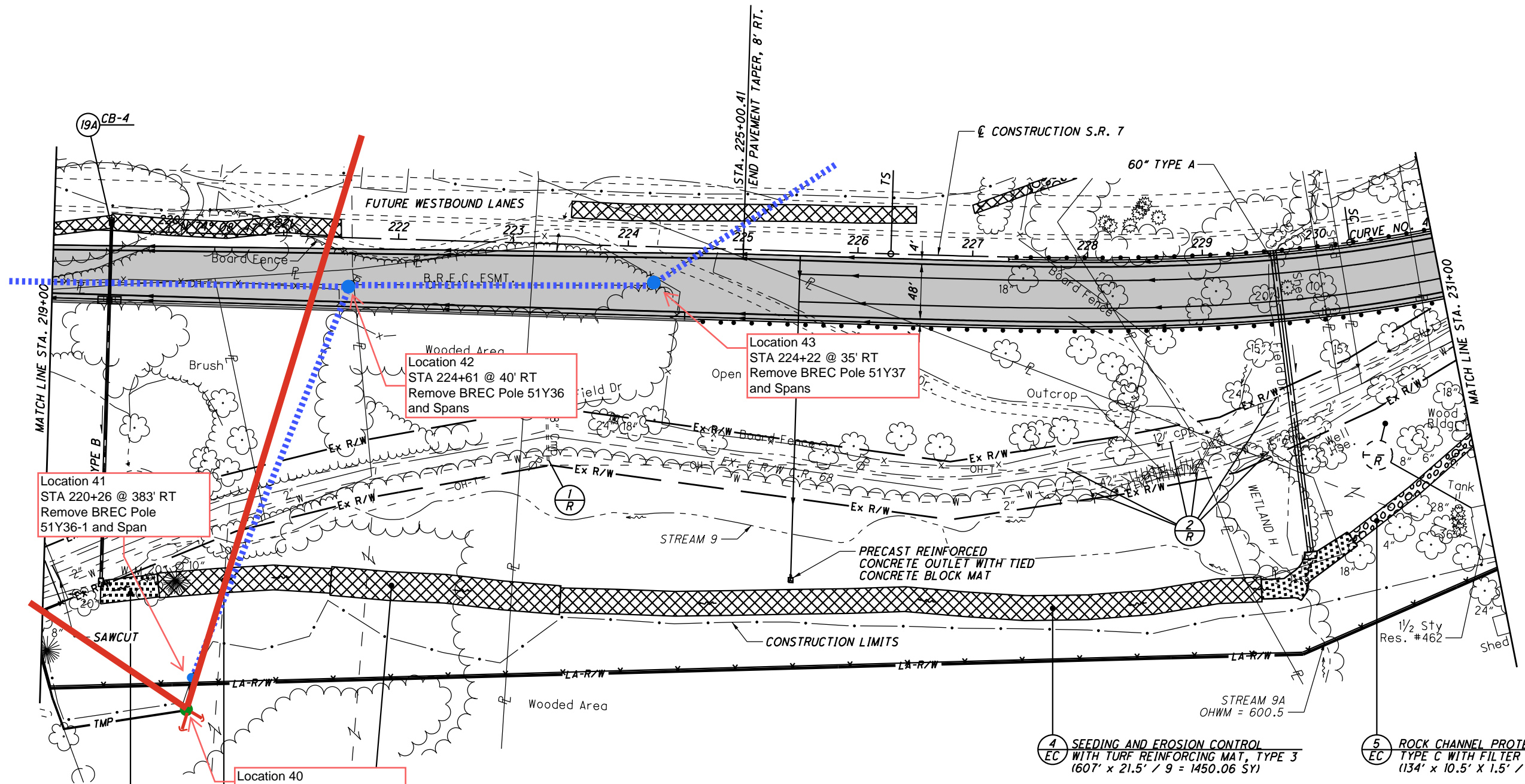
(LF) DESIGNATES LEACH FIELD

REV. BY	DATE	DESCRIPTION

PID NO. 75923  
 R/W DESIGNER TB  
 R/W REVIEWER SER  
**RIGHT OF WAY TOPO SHEET**  
**STA. 206+80 TO STA. 220+00 (SOUTH)**  
**LAW-7-2.17**

U:\173608714\LA-75923\row\sheet\75923RTO 11.dgn 12/9/2014 11:17:18 AM siparker

P.I. STA. 232+01.52	$\theta s = 9^\circ 30' 00''$
$\Delta = 34^\circ 12' 59''$ (LT)	$Ls = 400.00'$
$Dc = 4^\circ 45' 00''$	$Ts = 572.79'$
$R = 1,206.23'$	$LT = 267.05'$
$T = 161.12'$	$ST = 133.68'$
$L = 320.35'$	$e_{max} = 8.00\%$
$E = 10.71'$	$CS STA. 233+49.08$
$TS STA. 226+28.73$	$ST STA. 237+49.08$
$SC STA. 230+28.73$	



Location 41  
STA 220+26 @ 383' RT  
Remove BREC Pole  
51Y36-1 and Span

Location 42  
STA 224+61 @ 40' RT  
Remove BREC Pole 51Y36  
and Spans

Location 43  
STA 224+22 @ 35' RT  
Remove BREC Pole 51Y37  
and Spans

Location 40  
STA 220+32 @ 415' RT  
Install BREC Pole 65'-2

4 SEEDING AND EROSION CONTROL  
WITH TURF REINFORCING MAT, TYPE 3  
(607' x 21.5' / 9 = 1450.06 SY)

5 ROCK CHANNEL PROTECTION.  
TYPE C WITH FILTER  
(134' x 10.5' x 1.5' / 27 = 78.17 CY)

1 ARTICULATING CONCRETE BLOCK  
REVTMENT SYSTEM, TYPE 1  
(150' x 20' / 9 = 111.11 SY)

2 SEEDING AND EROSION CONTROL  
WITH TURF REINFORCING MAT, TYPE 1  
(200' x 25' / 9 = 555.56 SY)

2 SEEDING AND EROSION CONTROL  
WITH TURF REINFORCING MAT, TYPE 3  
(151' x 21.5' / 9 = 360.72 SY)

█ - PROPOSED PAVEMENT

FOR QUANTITIES, SEE SHEETS 71-81  
FOR PROFILE, SEE SHEET 116  
FOR STORM SEWER PROFILE, SEE SHEET 231  
FOR CULVERT DETAILS, SEE SHEETS 658  
FOR UNDERDRAIN TABLES, SEE SHEETS 674-678  
FOR TRAFFIC CONTROL PLAN, SEE SHEETS 713-733A  
FOR FENCE TABLES, SEE SHEETS 1039-1041

U:\173608714\LA\75923\roadway\_sheets\75923GP010A-2A.dgn 5/21/2024 4:50:12 PM SL Parker

PLAN - S.R. 7  
STA. 219+00 TO STA. 231+00 (SOUTH)

LAW-7-2.17

115  
1247

FOR QUANTITIES, SEE SHEETS 71-81  
FOR PROFILE, SEE SHEET 116  
FOR STORM SEWER PROFILE, SEE SHEET 231  
FOR CULVERT DETAILS, SEE SHEETS 658  
FOR UNDERDRAIN TABLES, SEE SHEETS 674-678  
FOR TRAFFIC CONTROL PLAN, SEE SHEETS 713-733A  
FOR FENCE TABLES, SEE SHEETS 1039-1041

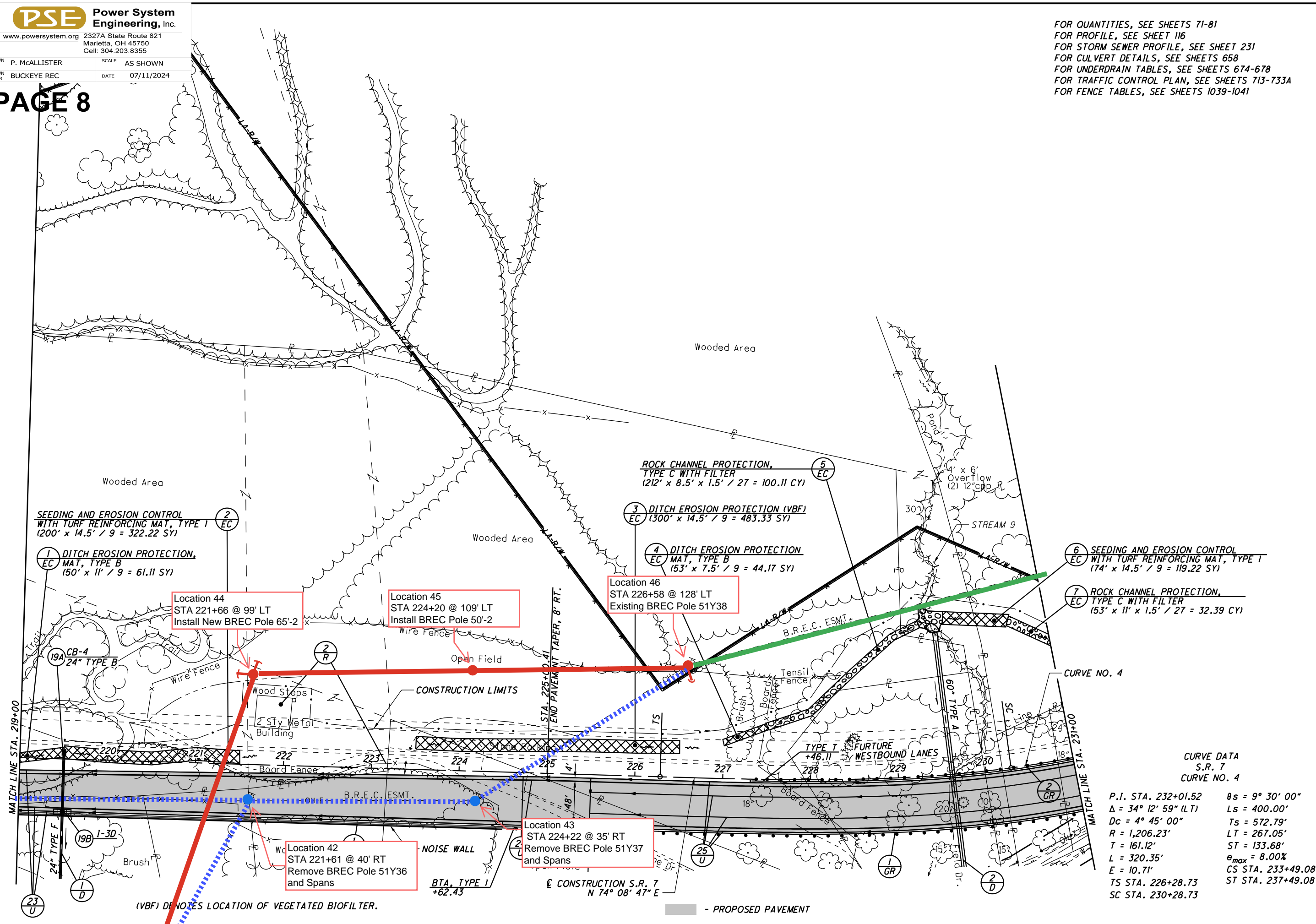


PLAN - S.R. 7  
STA. 219+00 TO STA. 231+00 (NORTH)

LAW-7-2.17

114  
1247

U:\173608714\Law\75923\roadway\_sheets\759230P010-2A.dgn 5/21/2024 4:50:11 PM SL Parker



CURVE DATA  
S.R. 7  
CURVE NO. 4

P.I. STA. 232+01.52	$\theta_s = 9^\circ 30' 00''$
$\Delta = 34^\circ 12' 59''$ (LT)	$L_s = 400.00'$
$D_c = 4^\circ 45' 00''$	$T_s = 572.79'$
$R = 1,206.23'$	$LT = 267.05'$
$T = 161.12'$	$ST = 133.68'$
$L = 320.35'$	$e_{max} = 8.00\%$
$E = 10.71'$	$CS STA. 233+49.08$
$TS STA. 226+28.73$	$ST STA. 237+49.08$
$SC STA. 230+28.73$	

(VBF) DENOTES LOCATION OF VEGETATED BIOFILTER.

- PROPOSED PAVEMENT



**PAGE 9**  
R = 1,206.23'  
L = 320.35'  
E = 10.71'  
TS STA. 226+28.73  
SC STA. 230+28.73

LT = 267.05'  
ST = 133.68'  
e<sub>max</sub> = 8.00%  
CS STA. 233+49.08  
ST STA. 237+49.08

ROCK CHANNEL PROTECTION,  
TYPE C WITH FILTER  
(53' x 6' x 1.5' / 27 = 17.67 CY)

SEEDING AND EROSION CONTROL  
WITH TURF REINFORCING MAT, TYPE 1  
(196' x 11' / 9 = 239.56 SY)

ROCK CHANNEL PROTECTION  
TYPE C WITH FILTER  
(57' x 11' x 1.5' / 27 = 34.83 CY)

SEEDING AND EROSION CONTROL  
WITH TURF REINFORCING MAT, TYPE 2  
(355' x 14.5' / 9 = 571.94 SY)

Location 47  
STA 231+38 @ 215' LT  
Existing BREC Pole 51Y39

Location 48  
STA 235+10 @ 173' LT  
Existing BREC Pole 51Y40

Location 50  
STA 238+10 @ 380' LT  
Existing BREC Pole 51Y42

Location 49  
STA 236+78 @ 292' LT  
Existing BREC Pole 51Y41

Location 51  
STA 231+98 @ 97' LT  
Remove BREC Pole and Span

Location 52  
STA 232+12 @ 55' LT  
Remove BREC Pole and Span

Location 59  
STA 235+36 @ 10' LT  
Remove BREC Pole  
51Y40-1 and Span

Location 53  
STA 231+42 @ 155' RT  
Remove BREC Pole  
51Y39-1 and Spans

Location 54  
STA 232+56 162' RT  
Remove BREC Pole  
51Y39-2 and Spans

Location 58  
STA 235+36 @ 115' RT  
Remove BREC Pole  
51Y39-4ZB

Location 57  
STA 234+27 @ 185' RT  
Remove BREC Pole  
51Y39-4 and Spans

Location 55  
STA 231+75 @ 238' RT  
Remove BREC Pole and Span

Location 56  
STA 233+42 @ 218' RT  
Remove BREC Pole  
57Y39-3 and Spans

ROCK CHANNEL PROTECTION,  
TYPE C WITH FILTER  
(243' x 10.5' x 1.5' / 27 = 141.75 CY)

DITCH EROSION PROTECTION  
MAT, TYPE B  
(57' x 11' / 9 = 69.67 SY)

DITCH EROSION PROTECTION  
MAT, TYPE B  
(153' x 11' / 9 = 187 SY)

ROCK CHANNEL PROTECTION,  
TYPE C WITH FILTER  
(152' x 12' x 1.5' / 27 = 101.33 CY)

(A) - STA. 235+13.20  
BEGIN PAVEMENT TAPER, 56' RT.

(C) - STA. 242+33.20  
END PAVEMENT TAPER, 44' RT.  
END SHOULDER TAPER, 54' RT.

(B) - STA. 241+73.20  
BEGIN SHOULDER TAPER, 49' RT.

(D) - PRECAST REINFORCED OUTLET WITH  
TIED CONCRETE BLOCK MAT

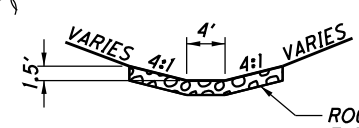
(LF) DESIGNATES  
LEACH FIELD

█ - PROPOSED PAVEMENT

CONTRACTOR TO FILL AND REGRADE THE EXISTING CHANNEL  
TO TIE INTO THE PROPOSED ROADSIDE DITCH USING THE  
TYPICAL SECTION ABOVE. THE FOLLOWING QUANTITIES ARE  
INCLUDED IN REFERENCE NUMBER 8-EC TO COMPLETE THIS  
WORK.

ITEM 203 - EXCAVATION - - - - - 5 CY  
ITEM 203 - EMBANKMENT - - - - - 1932 CY  
ITEM 601 - ROCK CHANNEL PROTECTION, TYPE C WITH FILTER - - - 203 CY  
ITEM 659 - SEEDING AND MULCHING - - - - - 1100 SY

**DITCH TYPICAL SECTION**



ROCK CHANNEL PROTECTION,  
TYPE C WITH FILTER

CONSTRUCTION LIMITS

SEE DITCH TYPICAL  
SECTION THIS SHEET

EX. E = 646.00

STREAM 10A  
OHWM = 636.7

STREAM 10  
OHWM = 637.4

WOODED AREA

TRAIL

BRUSH

SEPTIC DR.

CONSTRUCTION S.R. 7

EX. R/W

EX. R/W

EX. R/W

EX. R/W

EX. R/W

EX. R/W

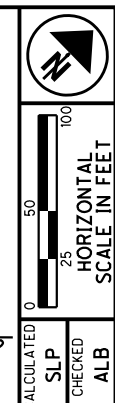
EX. R/W

EX. R/W

EX. R/W

EX. R/W

EX. R/W



CALCULATED SLP CHECKED ALB

PLAN - S.R. 7  
STA. 231+00 TO STA. 243+00

LAW-7-2.17

117  
1247

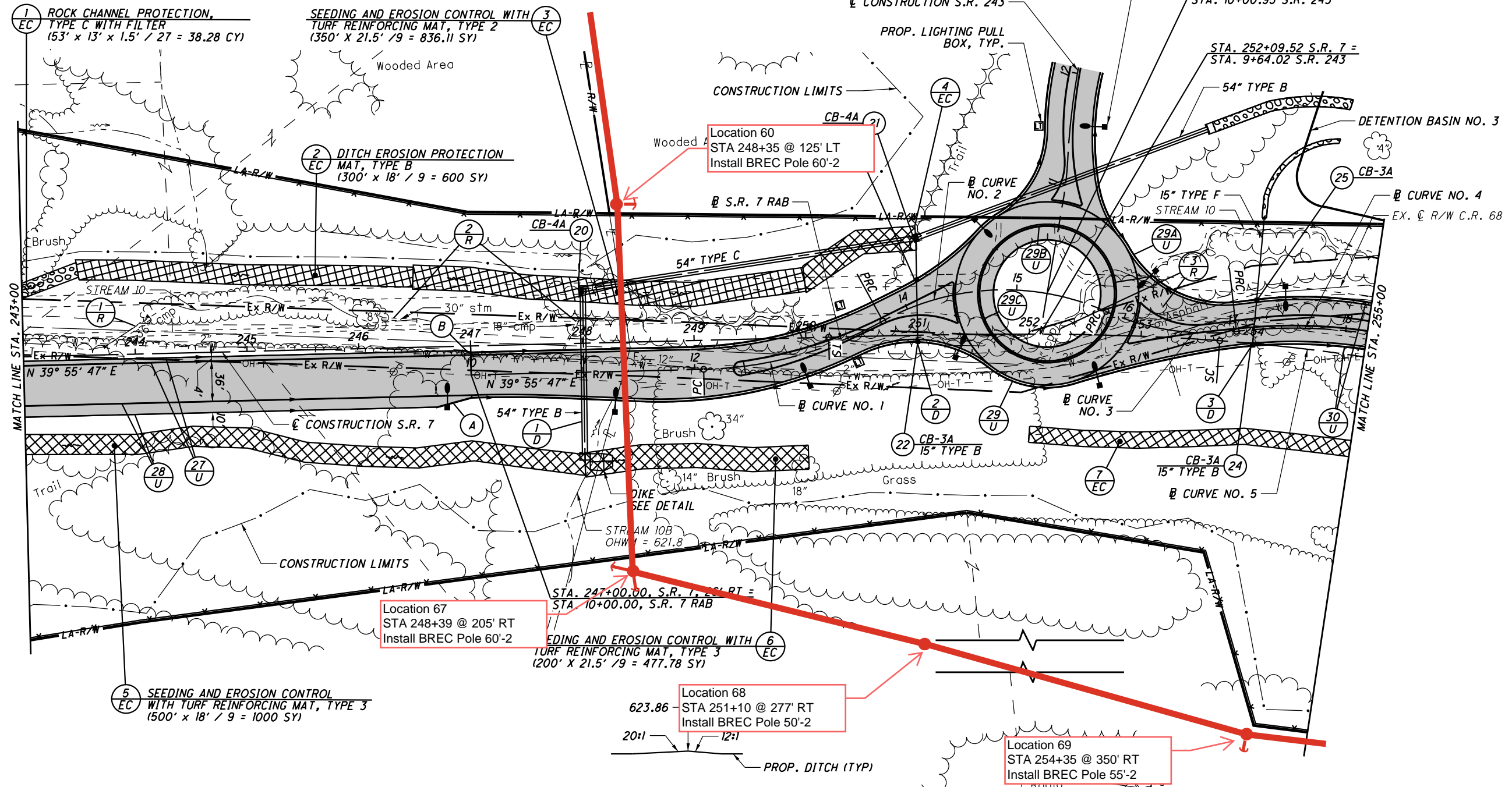
U:\173608714\LAW\75923\roadway\_sheets\75923GP011-2A.dgn 5/21/2024 4:50:15 PM SLParker



DWN BY P. McALLISTER SCALE AS SHOWN  
DWN FOR BUCKEYE REC DATE 07/11/2024  
FOR Δ = 58° 46' 06" (R/L) LS = 350.00'  
R = 1,762.95' LT = 1,169.30'  
T = 773.76' ST = 116.78'  
L = 1,458.26' e<sub>max</sub> = 7.10%  
E = 162.33' CS STA. 268+28.71  
TS STA. 250+20.45 ST STA. 271+78.71  
SC STA. 253+70.45

**PAGE 11**

CURVE DATA S.R. 7 RAB @ CURVE NO. 1	CURVE DATA S.R. 7 RAB @ CURVE NO. 2	CURVE DATA S.R. 7 RAB @ CURVE NO. 3	CURVE DATA S.R. 7 RAB @ CURVE NO. 4
P.I. Sta. 12+93.43	P.I. Sta. 14+87.13	P.I. Sta. 16+43.83	P.I. Sta. 18+27.99
Δ = 27° 26' 21" (LT)	Δ = 52° 43' 55" (RT)	Δ = 30° 24' 24" (LT)	Δ = 31° 15' 43" (RT)
Dc = 16° 22' 13"	Dc = 25° 27' 53"	Dc = 25° 27' 53"	Dc = 12° 43' 57"
R = 350.00'	R = 225.00'	R = 225.00'	R = 450.00'
T = 85.45'	T = 111.52'	T = 61.15'	T = 125.90'
L = 167.62'	L = 207.08'	L = 119.41'	L = 245.53'
E = 10.28'	E = 26.12'	E = 8.16'	E = 17.28'
PC Sta. 12+07.99	PRC Sta. 13+75.60	PRC Sta. 15+82.68	PRC Sta. 17+02.09
PT Sta. 13+75.60	PT Sta. 15+82.68	PT Sta. 17+02.09	PT Sta. 19+47.62



- (A) STA. 246+68.00  
BEGIN SHOULDER TAPER, 54' RT.  
STA. 247+00.00  
END SHOULDER TAPER, 58' RT.
- (B) STA. 246+92.00  
BEGIN SHOULDER TAPER, 4' LT.  
STA. 247+00.00  
END SHOULDER TAPER, 6' LT.

(4) DITCH EROSION PROTECTION  
MAT, TYPE B  
(100' X 21.5' / 9 = 238.89 SY)

(7) SEEDING AND EROSION CONTROL WITH  
TURF REINFORCING MAT, TYPE 1  
(288' X 14.5' / 9 = 464 SY)

**DIKE DETAIL**  
EMBANKMENT INCLUDED IN THE COST OF  
ITEM 611 - 54" CONDUIT, TYPE B

- PROPOSED PAVEMENT  
\* USE TYPE 6 CURB TO TAPER  
SHOULDER. TAPER CURB HEIGHT  
FROM 0" TO 6" IN 10'.

FOR QUANTITIES, SEE SHEETS 71-81  
FOR PROFILE, SEE SHEETS 120-121  
FOR S.R. 243 PLAN AND PROFILE, SEE SHEETS 490-491  
FOR PAVEMENT DETAILS, SEE SHEETS 607-609  
FOR STORM SEWER PROFILES, SEE SHEETS 257, 259 & 642  
FOR UNDERDRAIN TABLES, SEE SHEETS 674-678  
FOR TRAFFIC CONTROL PLAN, SEE SHEETS 713-733A  
FOR FENCE TABLES, SEE SHEETS 1039-1041



PLAN - S.R. 7  
STA. 243+00 TO STA. 255+00 (NORTH)

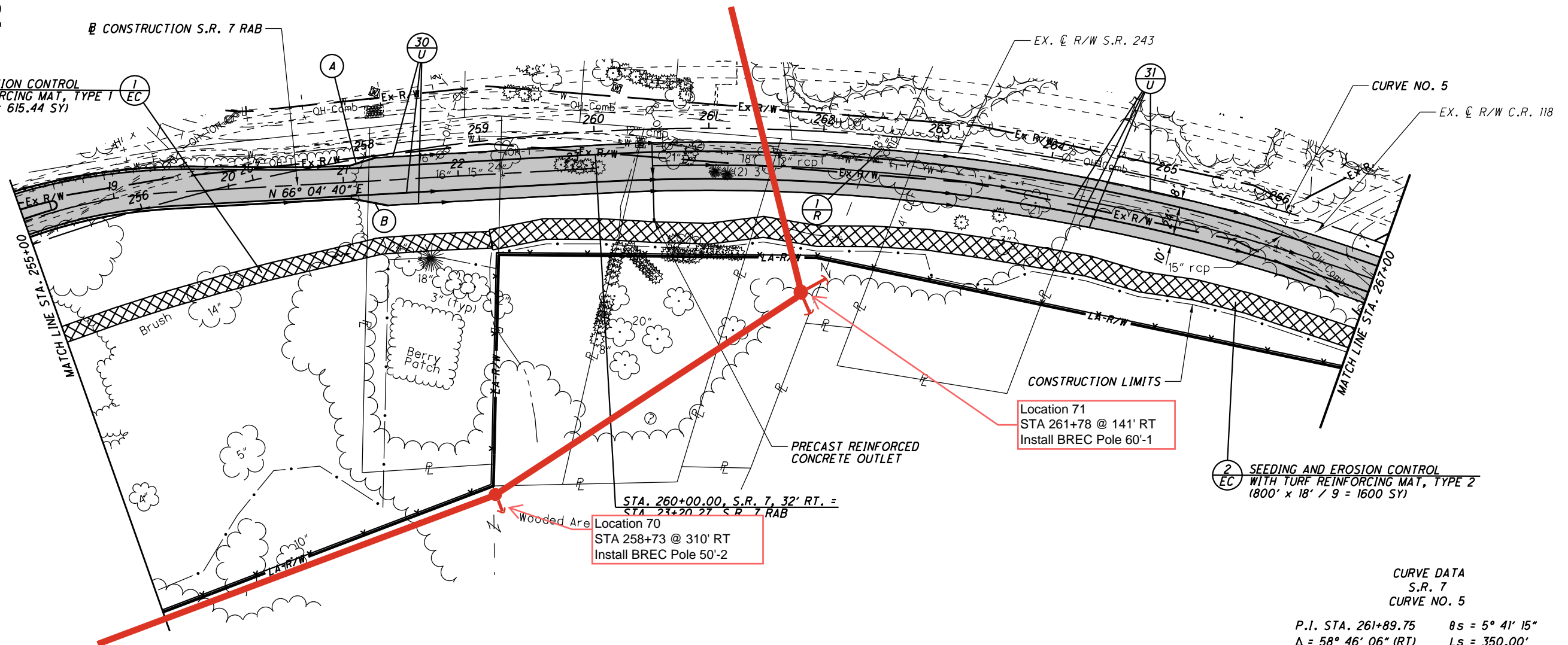
LAW - 7 - 2.17

119  
1247

U:\173608714\LA\75923\roadway\_sheets\75923GP012-2A.dgn 5/21/2024 4:50:20 PM SLParker

CONSTRUCTION S.R. 7 RAB

SEEDING AND EROSION CONTROL WITH TURF REINFORCING MAT, TYPE 1 (382' x 14.5' / 9 = 615.44 SY)



Location 71  
STA 261+78 @ 141' RT  
Install BREC Pole 60'-1

Location 70  
STA 258+73 @ 310' RT  
Install BREC Pole 50'-2

SEEDING AND EROSION CONTROL WITH TURF REINFORCING MAT, TYPE 2 (800' x 18' / 9 = 1600 SY)

CURVE DATA  
S.R. 7  
CURVE NO. 5

P.I. STA. 261+89.75	θs = 5° 41' 15"
Δ = 58° 46' 06" (RT)	Ls = 350.00'
Dc = 3° 15' 00"	Ts = 1,169.30'
R = 1,762.95'	LT = 233.45'
T = 773.76'	ST = 116.78'
L = 1,458.26'	e <sub>max</sub> = 7.10%
E = 162.33'	CS STA. 268+28.71
TS STA. 250+20.45	ST STA. 271+78.71
SC STA. 253+70.45	

- \* A - STA. 257+84.79  
BEGIN SHOULDER TAPER, 4.87' RT.  
STA. 258+09.36  
END SHOULDER TAPER, 1.71' RT.
- \* B - STA. 257+81.31  
BEGIN SHOULDER TAPER, 32.70' RT.  
STA. 258+12.87  
END SHOULDER TAPER, 44.33' RT.

\* USE TYPE 6 CURB TO TAPER SHOULDER. TAPER CURB HEIGHT FROM 0" TO 6" IN 10'.

█ - PROPOSED PAVEMENT

FOR QUANTITIES, SEE SHEETS 71-81  
FOR PROFILE, SEE SHEET 124  
FOR PAVEMENT DETAILS, SEE SHEETS 609  
FOR UNDERDRAIN TABLES, SEE SHEETS 674-678  
FOR TRAFFIC CONTROL PLAN, SEE SHEETS 713-733A  
FOR FENCE TABLES, SEE SHEETS 1039-1041

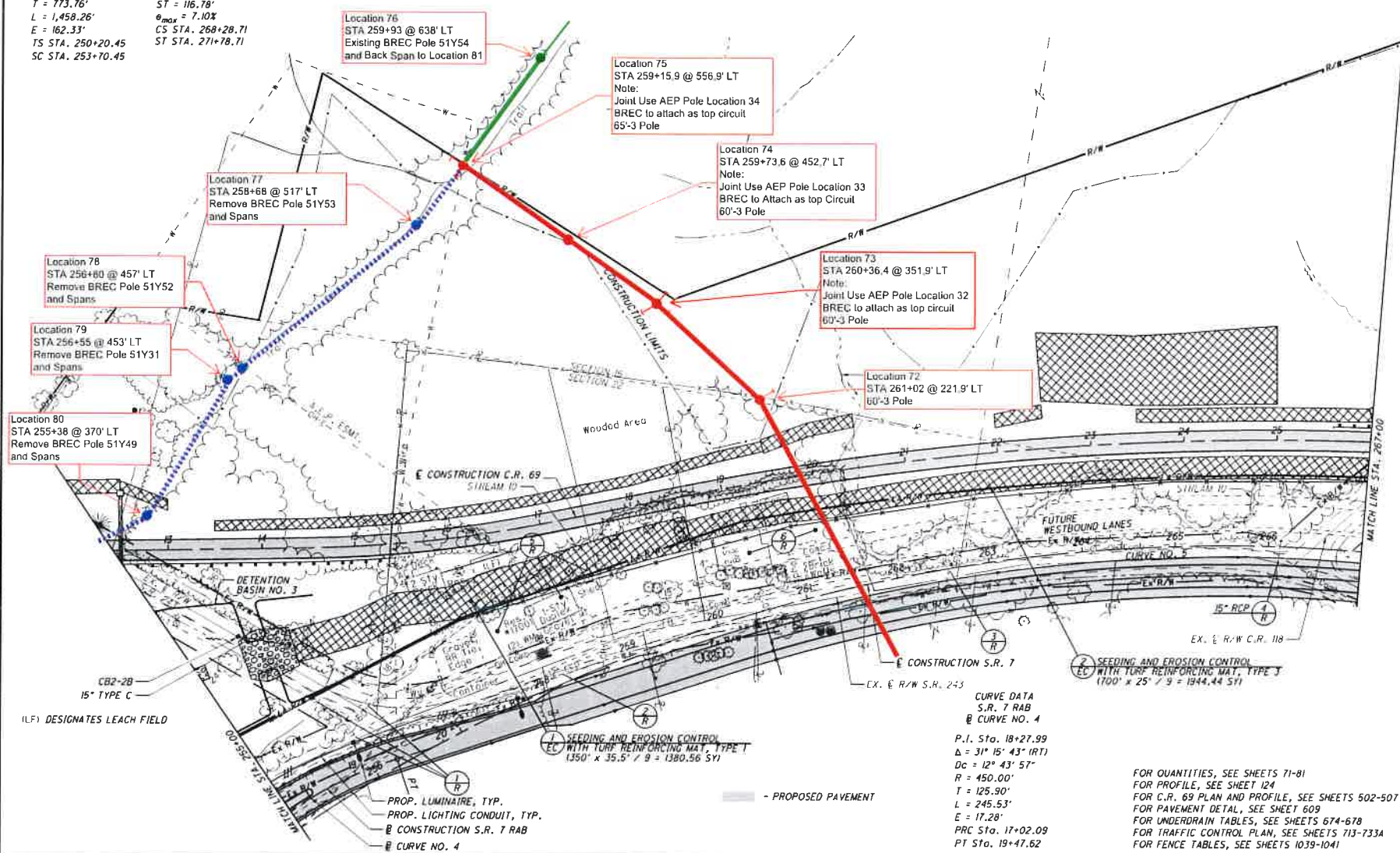
PLAN - S.R. 7  
STA. 255+00 TO STA. 267+00 (SOUTH)

LAW - 7 - 2.17

U:\173608714\LAW\75923\roadway\_sheets\75923GP013A-2A.dgn 5/21/2024 4:50:25 PM SL Parker

BY P. McALLISTER AS SHOWN  
DATE 07/11/2014  
PROJECT DUCKEYE REC  
SHEET NO. 13 OF 17  
**PAGE 13**  
SCALE 1" = 40' (VERTICAL)  
SCALE 1" = 100' (HORIZONTAL)  
T = 773.76'  
L = 1,458.26'  
E = 162.33'  
TS STA. 250+20.45  
SC STA. 253+70.45  
LS = 350.00'  
Ts = 1,169.30'  
LT = 233.45'  
ST = 116.78'  
θ<sub>max</sub> = 7.10%  
CS STA. 268+28.71  
ST STA. 271+78.71

PROJECT: 07/11/2014, 10:00 AM  
 DRAWN BY: P. McALLISTER  
 CHECKED BY: J. McALLISTER  
 DATE: 07/11/2014, 10:00 AM  
 SCALE: 1" = 40' (VERTICAL), 1" = 100' (HORIZONTAL)



VERTICAL SCALE IN FEET  
HORIZONTAL SCALE IN FEET

PLAN - S.R. 7  
STA. 255+00 TO STA. 267+00 (NORTH)

LAW-7-2.17

122  
1247

Location 76  
STA 259+93 @ 638' LT  
Existing BREC Pole 51Y54  
and Back Span to Location 81

Location 75  
STA 259+15.9 @ 556.9' LT  
Note:  
Joint Use AEP Pole Location 34  
BRE C to attach as top circuit  
65'-3 Pole

Location 74  
STA 259+73.6 @ 452.7' LT  
Note:  
Joint Use AEP Pole Location 33  
BRE C to Attach as top Circuit  
60'-3 Pole

Location 73  
STA 260+36.4 @ 351.9' LT  
Note:  
Joint Use AEP Pole Location 32  
BRE C to attach as top circuit  
60'-3 Pole

Location 72  
STA 261+02 @ 221.9' LT  
60'-3 Pole

Location 77  
STA 258+68 @ 517' LT  
Remove BRE C Pole 51Y53  
and Spans

Location 78  
STA 256+80 @ 457' LT  
Remove BRE C Pole 51Y52  
and Spans

Location 79  
STA 256+55 @ 453' LT  
Remove BRE C Pole 51Y31  
and Spans

Location 80  
STA 255+38 @ 370' LT  
Remove BRE C Pole 51Y49  
and Spans

CURVE DATA  
S.R. 7 RAB  
@ CURVE NO. 4  
P.I. Sta. 18+27.99  
Δ = 31° 15' 43" (RT)  
Dc = 12° 43' 57"  
R = 450.00'  
T = 125.90'  
L = 245.53'  
E = 17.28'  
PRC Sta. 17+02.09  
PT Sta. 19+47.62

FOR QUANTITIES, SEE SHEETS 71-81  
FOR PROFILE, SEE SHEET 124  
FOR C.R. 69 PLAN AND PROFILE, SEE SHEETS 502-507  
FOR PAVEMENT DETAIL, SEE SHEET 609  
FOR UNDERDRAIN TABLES, SEE SHEETS 674-678  
FOR TRAFFIC CONTROL PLAN, SEE SHEETS 713-733A  
FOR FENCE TABLES, SEE SHEETS 1039-1041

PROP. LUMINAIRE, TYP.  
PROP. LIGHTING CONDUIT, TYP.  
@ CONSTRUCTION S.R. 7 RAB  
@ CURVE NO. 4

1 SEEDING AND EROSION CONTROL  
EL WITH TURF REINFORCING MAT, TYPE T  
(1350' x 35.5' / 9 = 1380.56 SY)

2 SEEDING AND EROSION CONTROL  
EL WITH TURF REINFORCING MAT, TYPE T  
(1700' x 25' / 9 = 1944.44 SY)

(LF) DESIGNATES LEACH FIELD

CB2-2B  
15" TYPE C

WOODED AREA

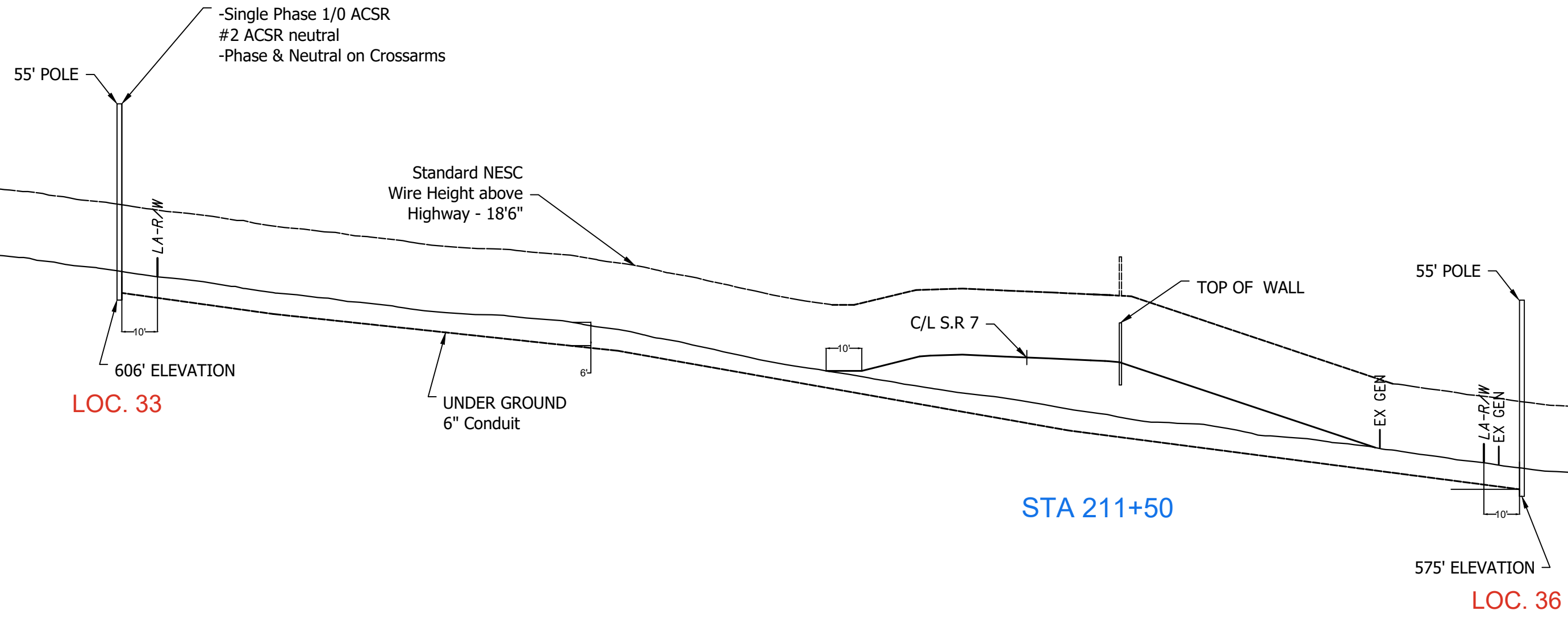
FUTURE WESTBOUND LANES

E CONSTRUCTION C.R. 69  
SIGNAL ID

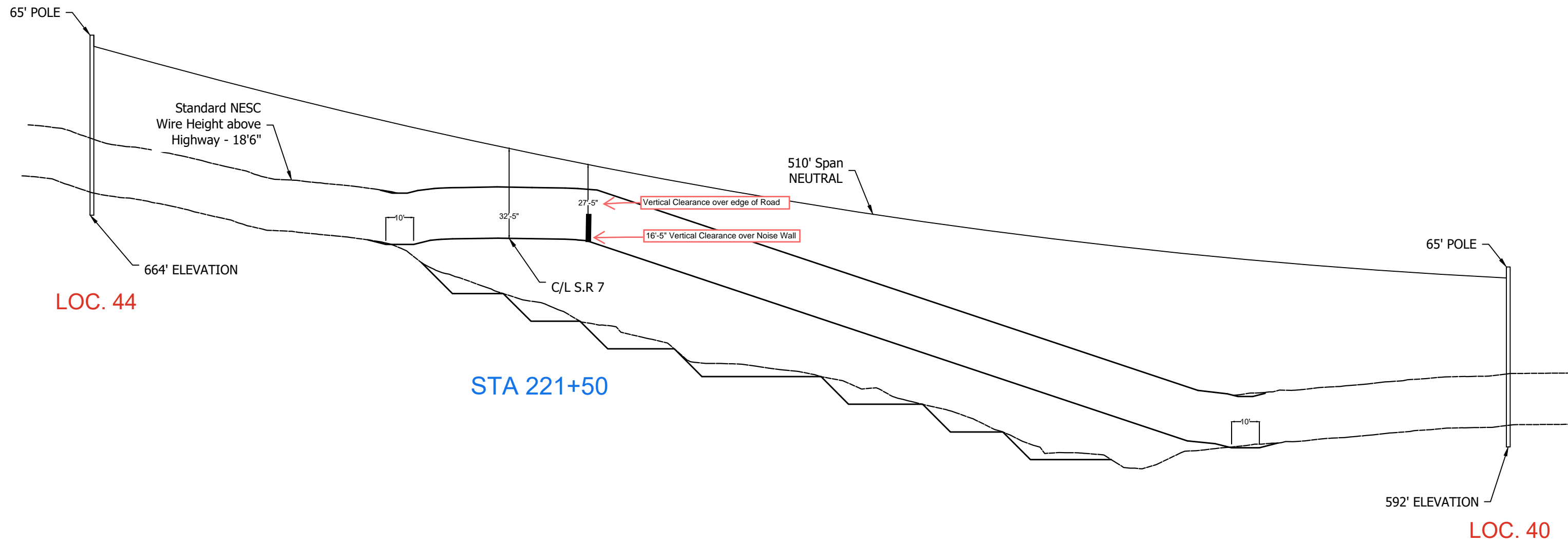
E CONSTRUCTION S.R. 7  
EX. & R/W S.R. 243

EX. & R/W C.R. 118

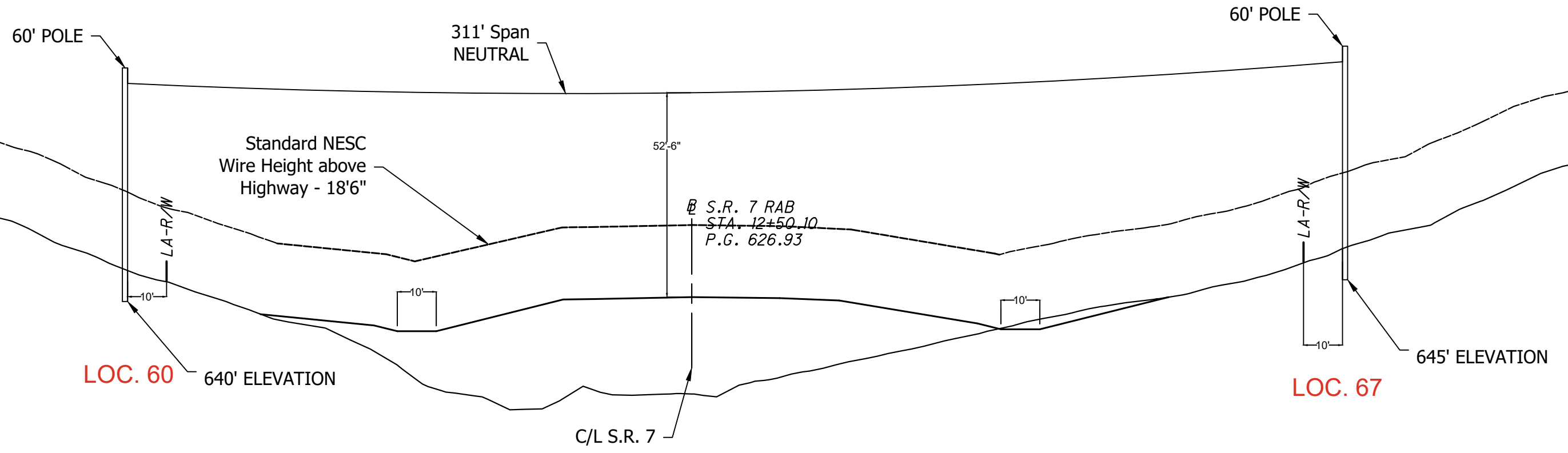
MATCH LINE STA. 267+00



THIS DRAWING IS DISTRIBUTED UPON THE CONDITION THAT IT IS NOT TO BE REPRODUCED OR BE COPIED, IN WHOLE OR IN PART WITHOUT THE EXPRESSED WRITTEN CONSENT OF POWER SYSTEM ENGINEERING, INC.			2327-A State Route 821 Marietta, OH 45750 Tel: 740.568.9221		BREC S.R. 7 ROAD CROSSING <b>STA 211+50</b>	
	ENGR - DWN BY -	CHK'D/ APP'D - DATE -	SCALE: NTS FILE: BREC S.R. 7 CROSSING 1	PROJECT NO. OH00623187	DRAWING NO. 400	
NO.      REVISION AND RECORD OF ISSUE      BY      ENGR.      DATE						



THIS DRAWING IS DISTRIBUTED UPON THE CONDITION THAT IT IS NOT TO BE REPRODUCED OR BE COPIED, IN WHOLE OR IN PART WITHOUT THE EXPRESSED WRITTEN CONSENT OF POWER SYSTEM ENGINEERING, INC.					 www.powersystem.org 2327-A State Route 821 Marietta, OH 45750 Tel: 740.568.9221	BRECS.R. 7 ROAD CROSSING STATION 221.5		PROJECT NO. OH00623187	DRAWING NO. 400
	NO.	REVISION AND RECORD OF ISSUE	BY	ENGR.		DATE	ENGR. APPD.	DATE	SCALE NTS



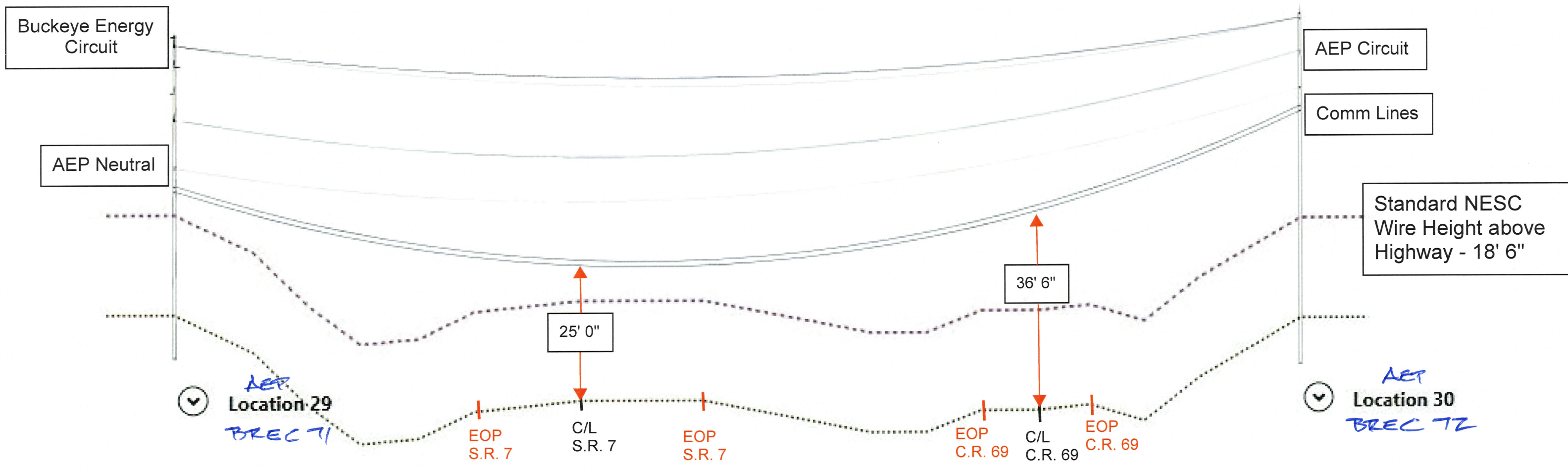
STA 248+50

THIS DRAWING IS DISTRIBUTED UPON THE CONDITION THAT IT IS NOT TO BE REPRODUCED OR BE COPIED, IN WHOLE OR IN PART WITHOUT THE EXPRESSED WRITTEN CONSENT OF POWER SYSTEM ENGINEERING, INC.				2327-A State Route 821 Marietta, OH 45750 Tel: 740.568.9221		BREC S.R. 7 ROAD CROSSING STA 248+50	
	ENGR - DWN BY -	CHKV/ APP'D - DATE -	SCALE: NTS	PROJECT NO.: OH00623187	DRAWING NO.: 400	FILE NAME: BREC S.R. 7 CROSSING 3	
NO.      REVISION AND RECORD OF ISSUE      BY      ENGR.      DATE							



# Vertical Clearance for State Route 7 and County Route 69 for Communication Lines

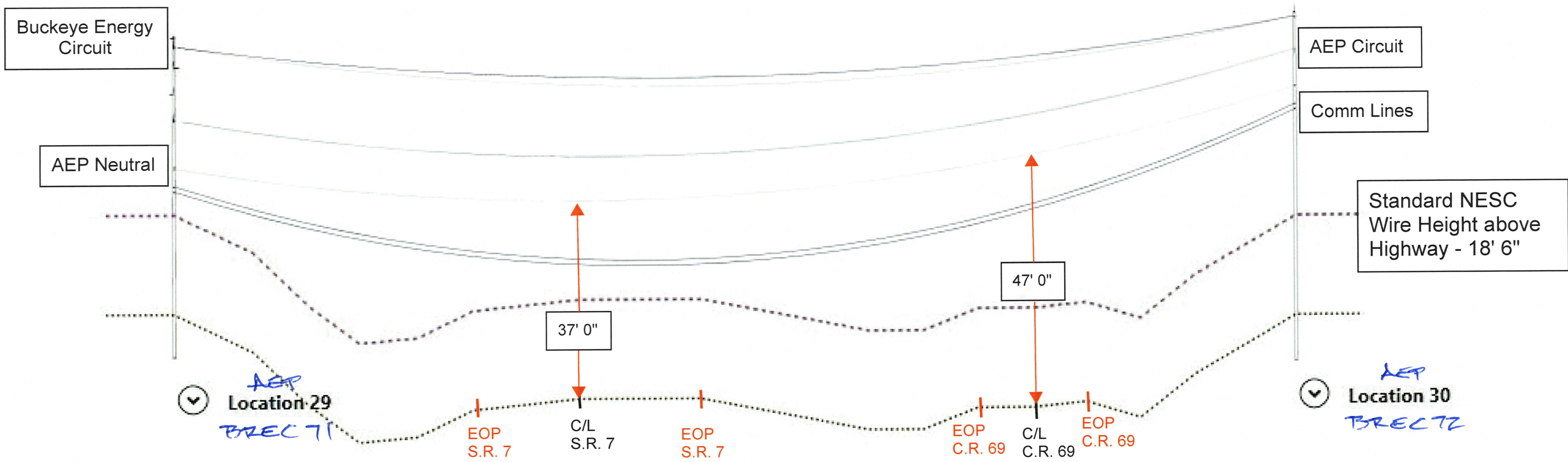
Not to Scale



Note: There are 2 total communication lines on this span. Heights shown are vertical clearance to lowest communication line. All communication lines are spaced 1 foot apart from each other.

# Vertical Clearance for State Route 7 and County Route 69 for AEP Circuit

Not to Scale



Note: AEP circuit as bottom circuit pole attachment. One 3 phase circuit with neutral below circuit. Heights shown are for lowest hanging AEP wire. (Buckeye Rural Energy as top circuit)