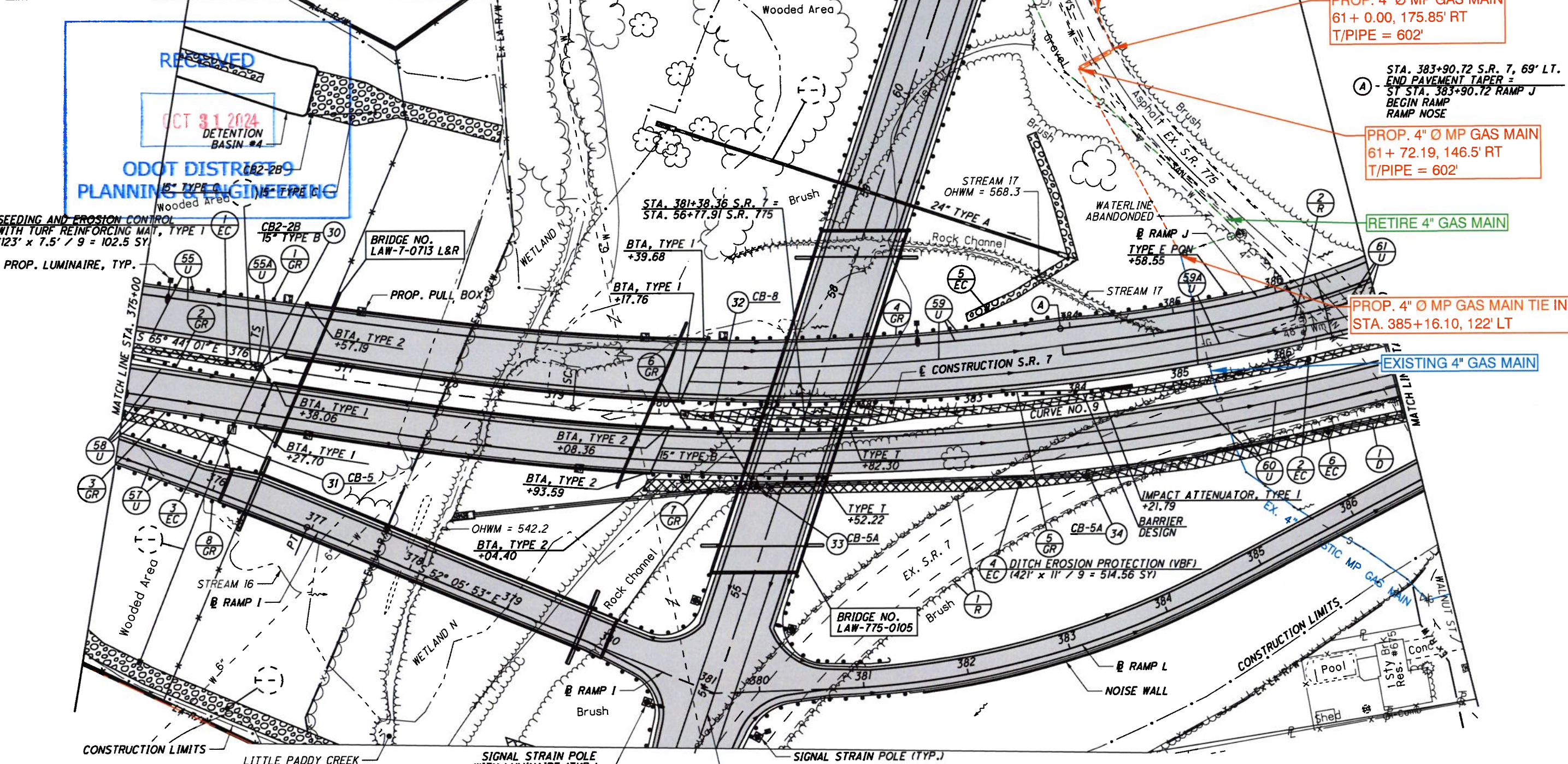


COLUMBIA GAS OF OHIO RELOCATION PLAN

LEGEND:

- : PROPOSED INSTALL 4" GAS LINE
- = : PROPOSED INSTALL 8" CASING
- : PROPOSED RETIRE 4" GAS LINE
- : EXISTING 4" GAS LINE



S.R. 7
CURVE NO. 9

STA. 387+47.15 0s = 3° 44' 12"
46° 04' 34" (LT) Ls = 300.00'
= 2° 29' 28" Ts = 1,128.77'
R = 2,300.00' LT = 200.04'
T = 805.51' ST = 100.04'
L = 1,549.62' e_{max} = 6.20%
E = 136.98' CS STA. 394+68.00
TS STA. 376+18.38 ST STA. 397+68.00
SC STA. 379+18.38

SEEDING AND EROSION CONTROL
WITH TURF REINFORCING MAT, TYPE I
(123' x 7.5' / 9 = 102.5 SY)

PROP. LUMINAIRE, TYP.

BRIDGE NO.
LAW-7-0713 L&R

BRIDGE NO.
LAW-775-0105

- 2** DITCH EROSION PROTECTION
MAT, TYPE B
(168' x 7.5' / 9 = 567.5 SY)
- 3** SEEDING AND EROSION CONTROL
WITH TURF REINFORCING MAT, TYPE I
(101' x 7.5' / 9 = 84.17 SY)

- 5** ROCK CHANNEL PROTECTION,
TYPE C WITH FILTER
(107' x 7.5' x 1.5' / 27 = 44.58 CY)
- 6** DITCH EROSION PROTECTION (VBF)
(300' x 11' / 9 = 366.67 SY)

— PROPOSED PAVEMENT

(VBF) DENOTES LOCATION OF VEGETATED BIOFILTER

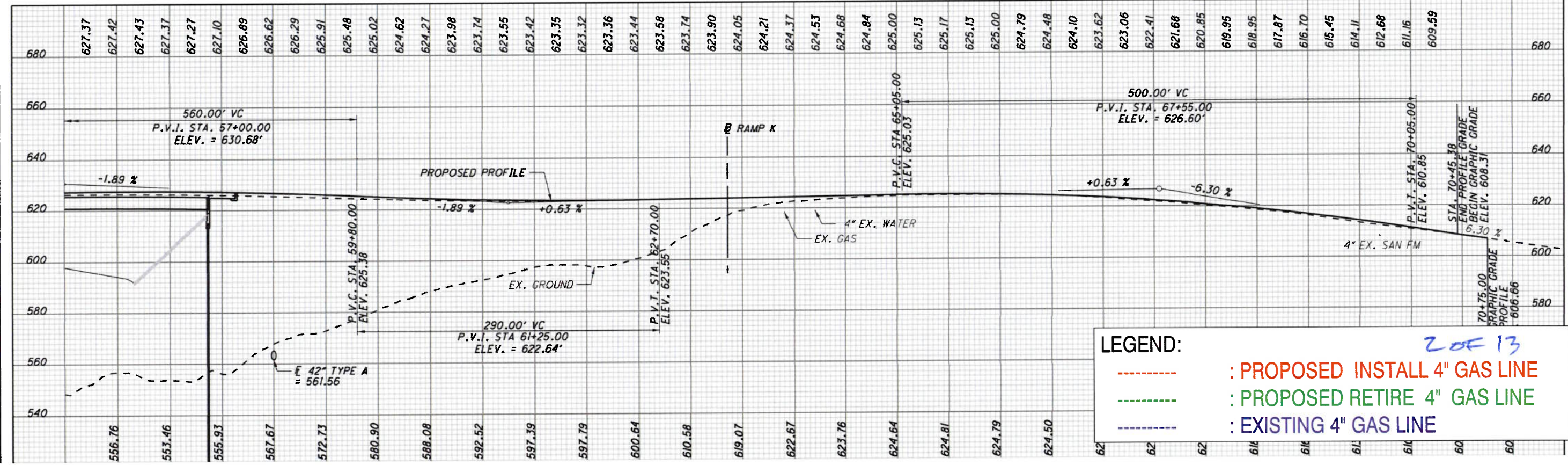
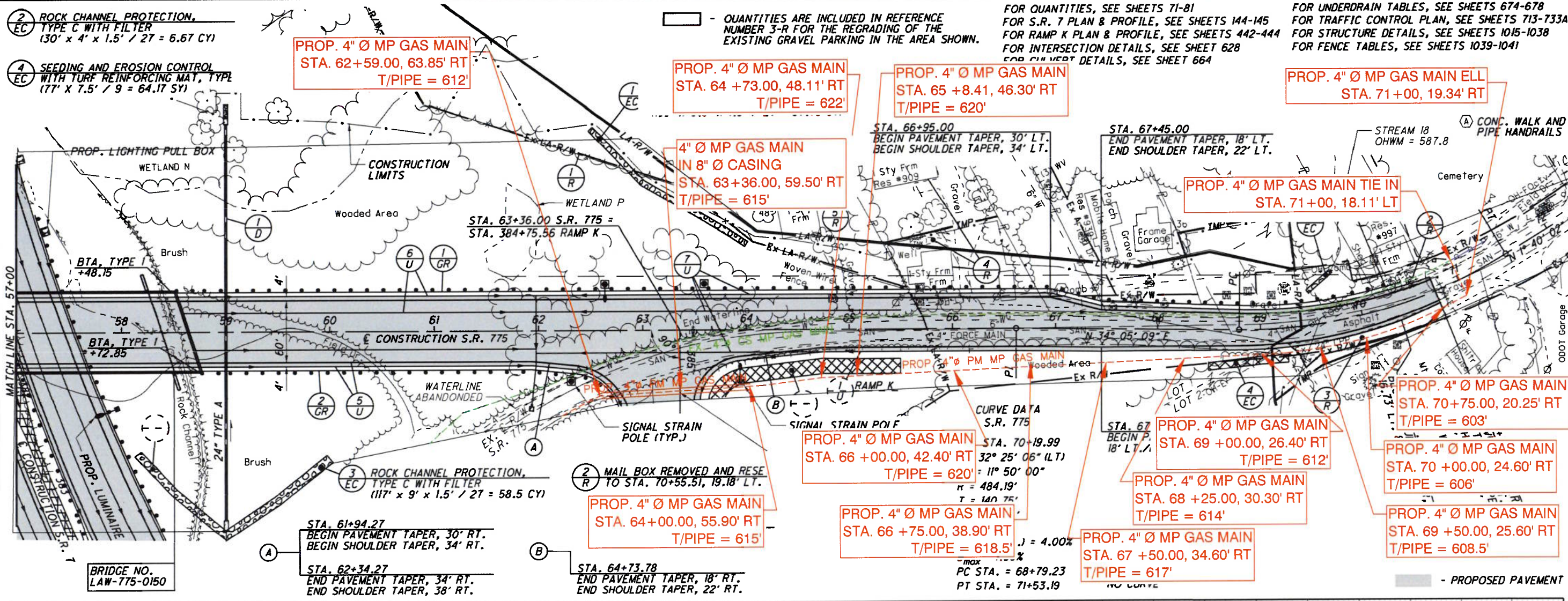
FOR QUANTITIES, SEE SHEETS 71-81
FOR PROFILE, SEE SHEET 145
FOR RAMP I PLAN AND PROFILE, SEE SHEET 431
FOR RAMP J PLAN AND PROFILE, SEE SHEET 437
FOR RAMP L PLAN AND PROFILE, SEE SHEET 457
FOR S.R. 775 PLAN AND PROFILE, SEE SHEETS 559-560
FOR INTERCHANGE DETAILS, SEE SHEETS 619-621
FOR INTERSECTION DETAILS, SEE SHEETS 627-628

FOR STORM SEWER PROFILES, SEE SHEETS 643 & 645
FOR CULVERT DETAILS, SEE SHEET 664
FOR DETENTION BASIN DETAILS, SEE SHEETS 665-673
FOR UNDERDRAIN TABLES, SEE SHEETS 674-678
FOR TRAFFIC CONTROL PLAN, SEE SHEETS 713-733A
FOR STRUCTURE DETAILS, SEE SHEETS 931-1038
FOR FENCE TABLES, SEE SHEETS 1039-1041

I:\73608714\LAN\75923\roadway\sheet\75923CP023-2A.dgn 5/21/2024 4:51:04 PM SLParker

LAW-7-2.17 PLAN - S.R. 7 STA. 375+00 TO STA. 387+00

10013



LEGEND:

- : PROPOSED INSTALL 4" GAS LINE
- : PROPOSED RETIRE 4" GAS LINE
- : EXISTING 4" GAS LINE

2 OF 13

FOR QUANTITIES, SEE SHEETS 71-81
 FOR S.R. 7 PLAN & PROFILE, SEE SHEETS 144-145
 FOR RAMP K PLAN & PROFILE, SEE SHEETS 442-444
 FOR INTERSECTION DETAILS, SEE SHEET 628
 FOR CURVE DETAILS, SEE SHEET 664

FOR UNDERDRAIN TABLES, SEE SHEETS 674-678
 FOR TRAFFIC CONTROL PLAN, SEE SHEETS 713-733A
 FOR STRUCTURE DETAILS, SEE SHEETS 1015-1038
 FOR FENCE TABLES, SEE SHEETS 1039-1041

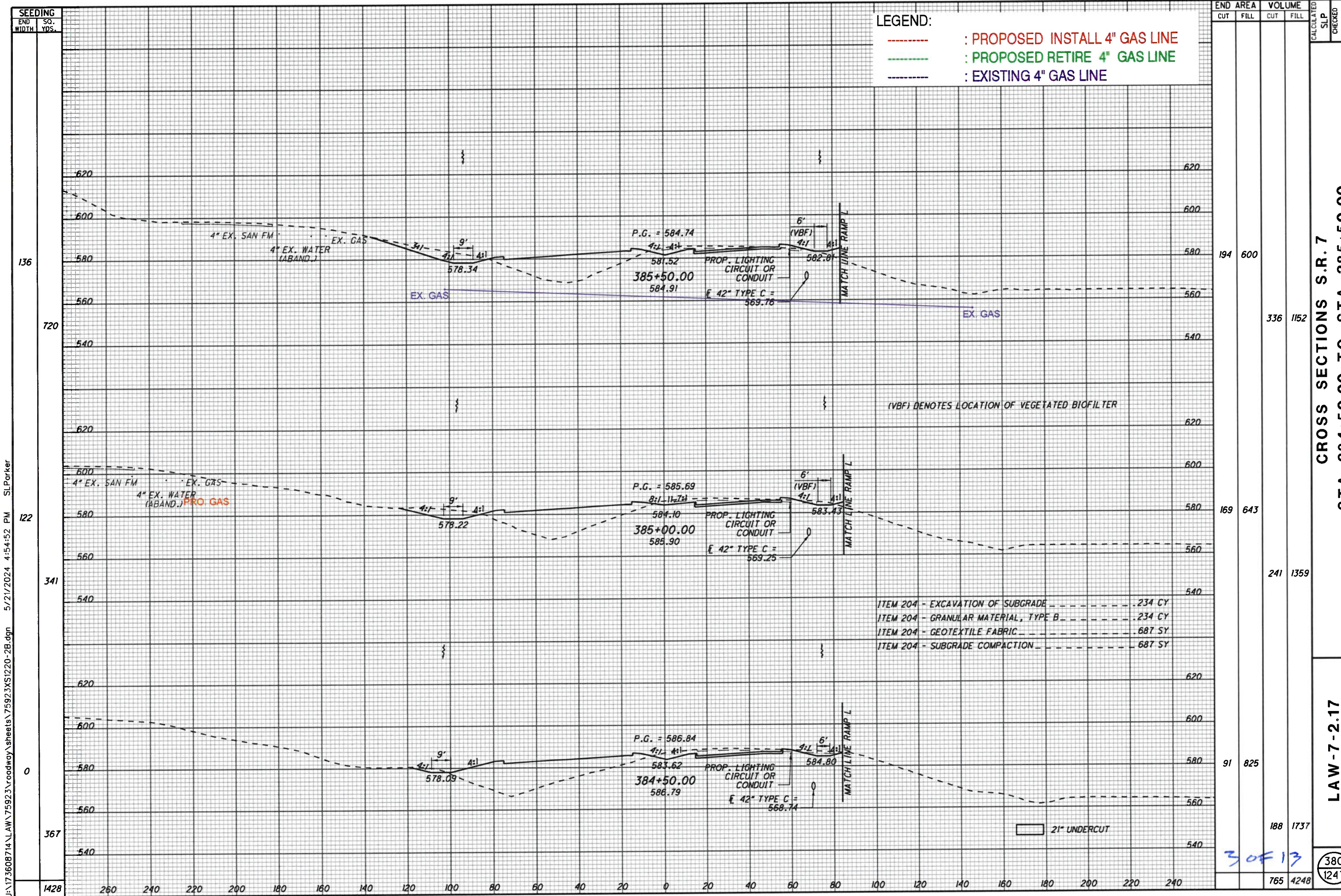
PLAN AND PROFILE - S.R. 775
 STA. 57+00.00 TO STA. 70+75.00

LAW - 7 - 2.17

560

CALCULATED 0
 CHECKED SLP
 ALB

HORIZONTAL SCALE IN FEET



LEGEND:

- : PROPOSED INSTALL 4" GAS LINE
- : PROPOSED RETIRE 4" GAS LINE
- : EXISTING 4" GAS LINE

END STA.	AREA	VOLUME		CALCULATED SLP	CHECKED ALB
		CUT	FILL		
194	600				
336	1152				
169	643				
241	1359				
91	825				
188	1737				
765	4248				

(VBF) DENOTES LOCATION OF VEGETATED BIOFILTER

- ITEM 204 - EXCAVATION OF SUBGRADE ----- 234 CY
- ITEM 204 - GRANULAR MATERIAL, TYPE B ----- 234 CY
- ITEM 204 - GEOTEXTILE FABRIC ----- 687 SY
- ITEM 204 - SUBGRADE COMPACTION ----- 687 SY

21" UNDERCUT

3 OF 13

380
1247

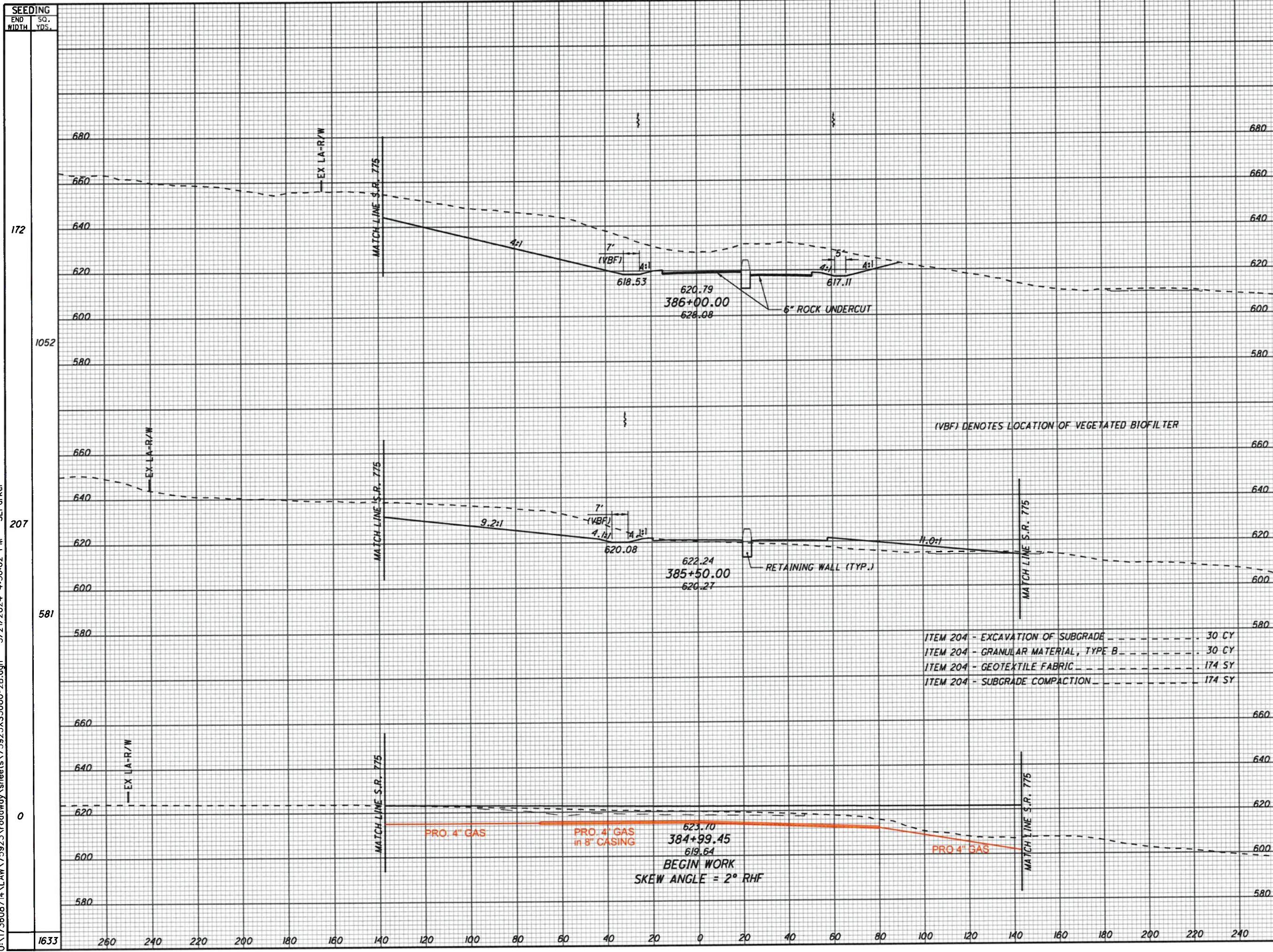
CROSS SECTIONS S.R. 7
STA. 384+50.00 TO STA. 385+50.00

LAW-7-2.17

SEEDING
 END WIDTH SO. YDS.
 136
 720
 122
 341
 0
 367
 1428
 260 240 220 200 180 160 140 120 100 80 60 40 20 0 20 40 60 80 100 120 140 160 180 200 220 240

U:\173608714\AW\75923\roadway\sheet\75923\XS1220-2B.dgn 5/21/2024 4:54:52 PM SLParker

U:\173608714\LA\75923\roadway\sheet\75923XS5000-2B.dgn 5/21/2024 4:56:02 PM SLParker



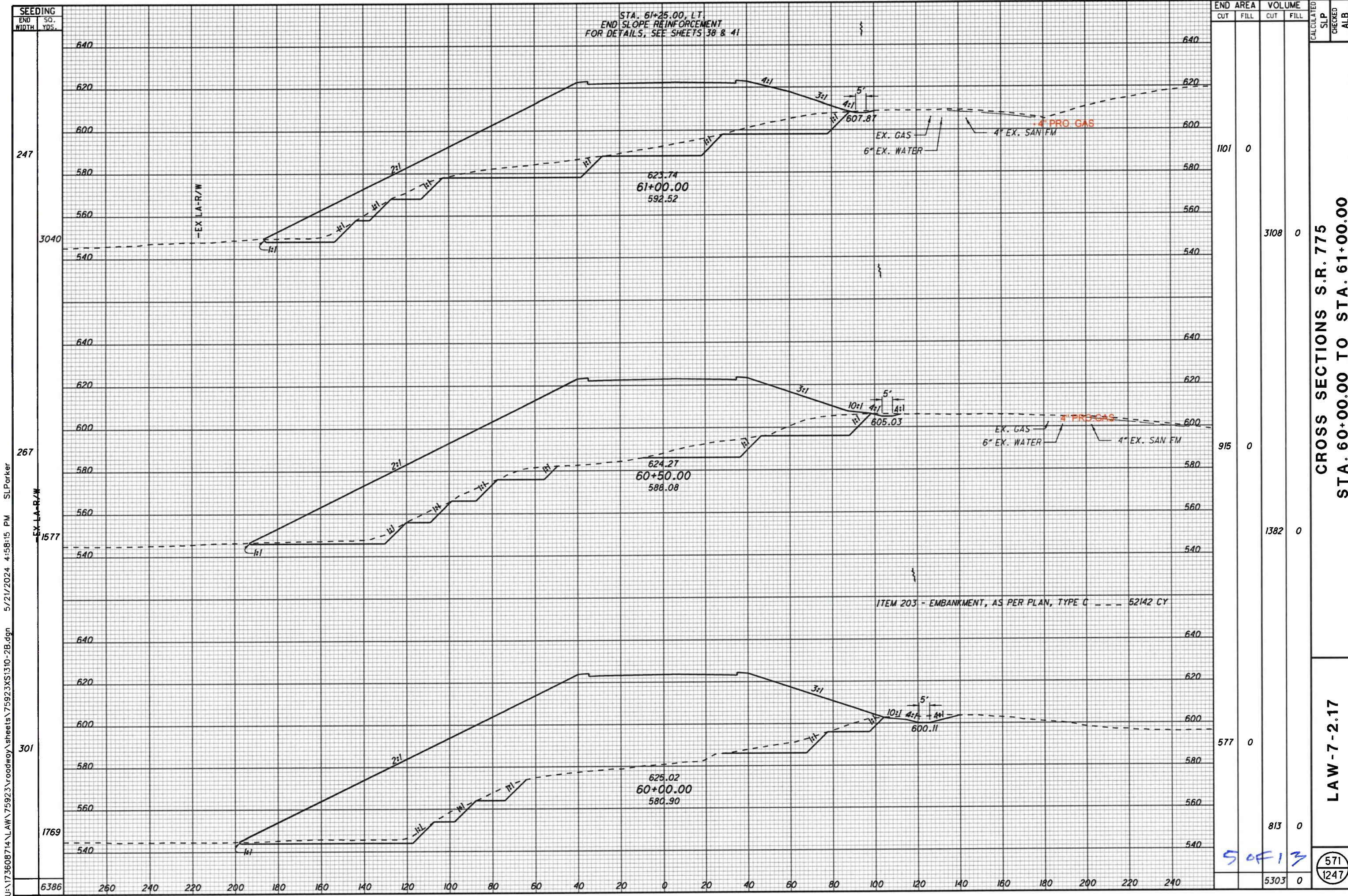
END AREA	VOLUME	CALCULATED SLP	CHECKED ALB
2854	0		
3491	300		
916	324		
858	1638		
0	1426		
4349	1938		

CROSS SECTIONS RAMP K
STA. 384+99.45 TO STA. 386+00.00

LAW-7-2.17

445
1247

4 OF 13



STA. 61+25.00, LT.
 END SLOPE REINFORCEMENT
 FOR DETAILS, SEE SHEETS 38 & 41

623.74
 61+00.00
 592.52

624.27
 60+50.00
 588.08

625.02
 60+00.00
 580.90

ITEM 203 - EMBANKMENT, AS PER PLAN, TYPE C - - - 52142 CY

END STA.	END AREA		VOLUME		CALCULATED SLP	CHECKED ALB
	CUT	FILL	CUT	FILL		
640						
620						
600						
580						
560						
540						
3040						
247	1101	0	3108	0		
640						
620						
600						
580						
560						
540						
1577						
267	915	0	1382	0		
640						
620						
600						
580						
560						
540						
301	577	0				
640						
620						
600						
580						
560						
540						
1769						
6386			813	0		
260			5303	0		

CROSS SECTIONS S.R. 775
 STA. 60+00.00 TO STA. 61+00.00

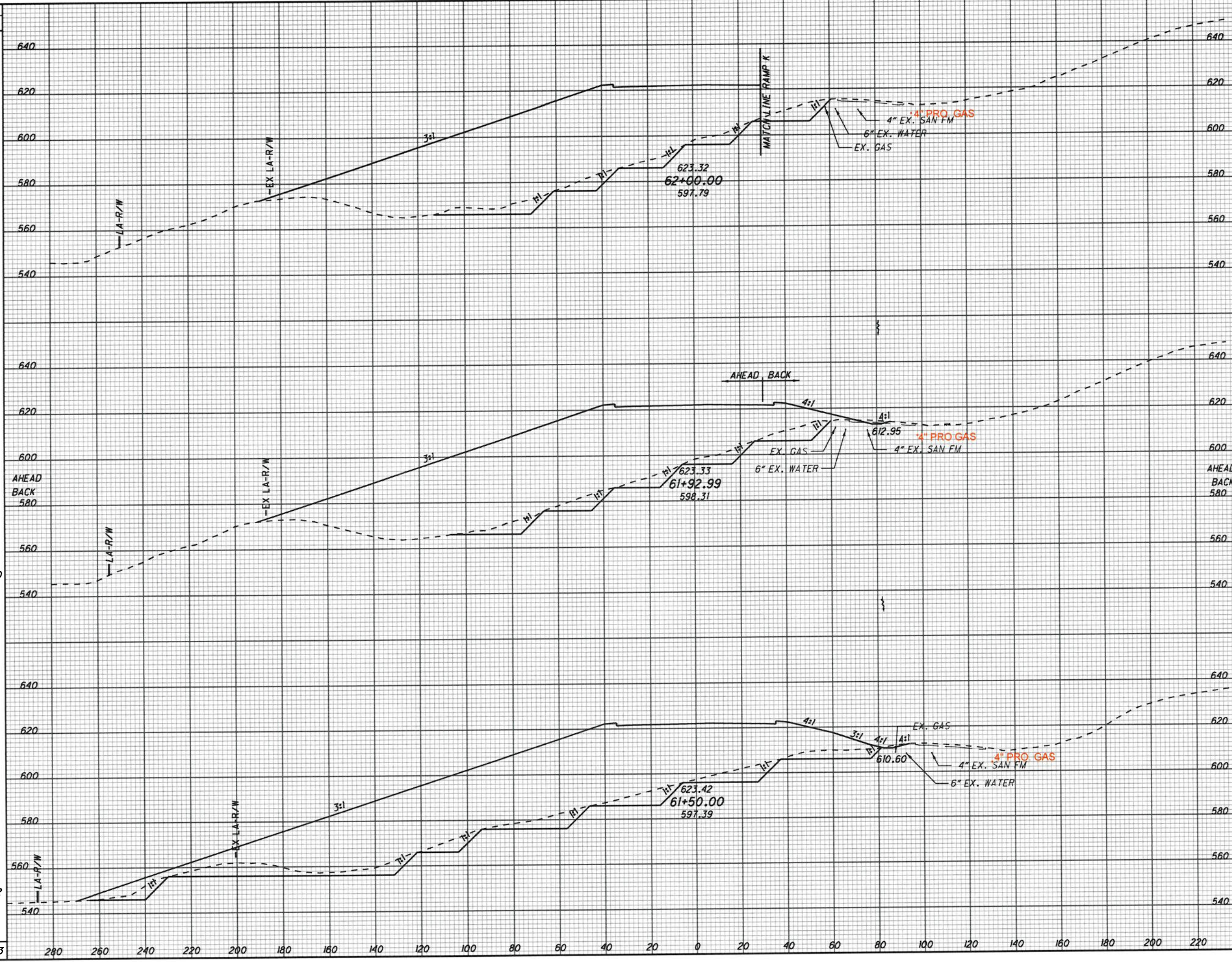
LAW-7-2.17

571
 1247

5 OF 13

U:\173608714\LA\75923\roadway\sheet\75923XS1310-2B.dgn 5/21/2024 4:58:15 PM SLParker

SEEDING
 END WIDTH SO. YDS.
 167
 131
 169 226
 1300
 318
 442
 1873



END STA.	END AREA		VOLUME		CALCULATED SLP	CHECKED ALB
	CUT	FILL	CUT	FILL		
62+00.00	565	6315				
61+50.00	412	6197	127	1625		
61+50.00	559	6630				
61+50.00	1359	11595				
61+50.00	1147	7934				
61+50.00	532	3673				
2018		16893				

CROSS SECTIONS S.R. 775
 STA. 61+50.00 TO STA. 62+00.00

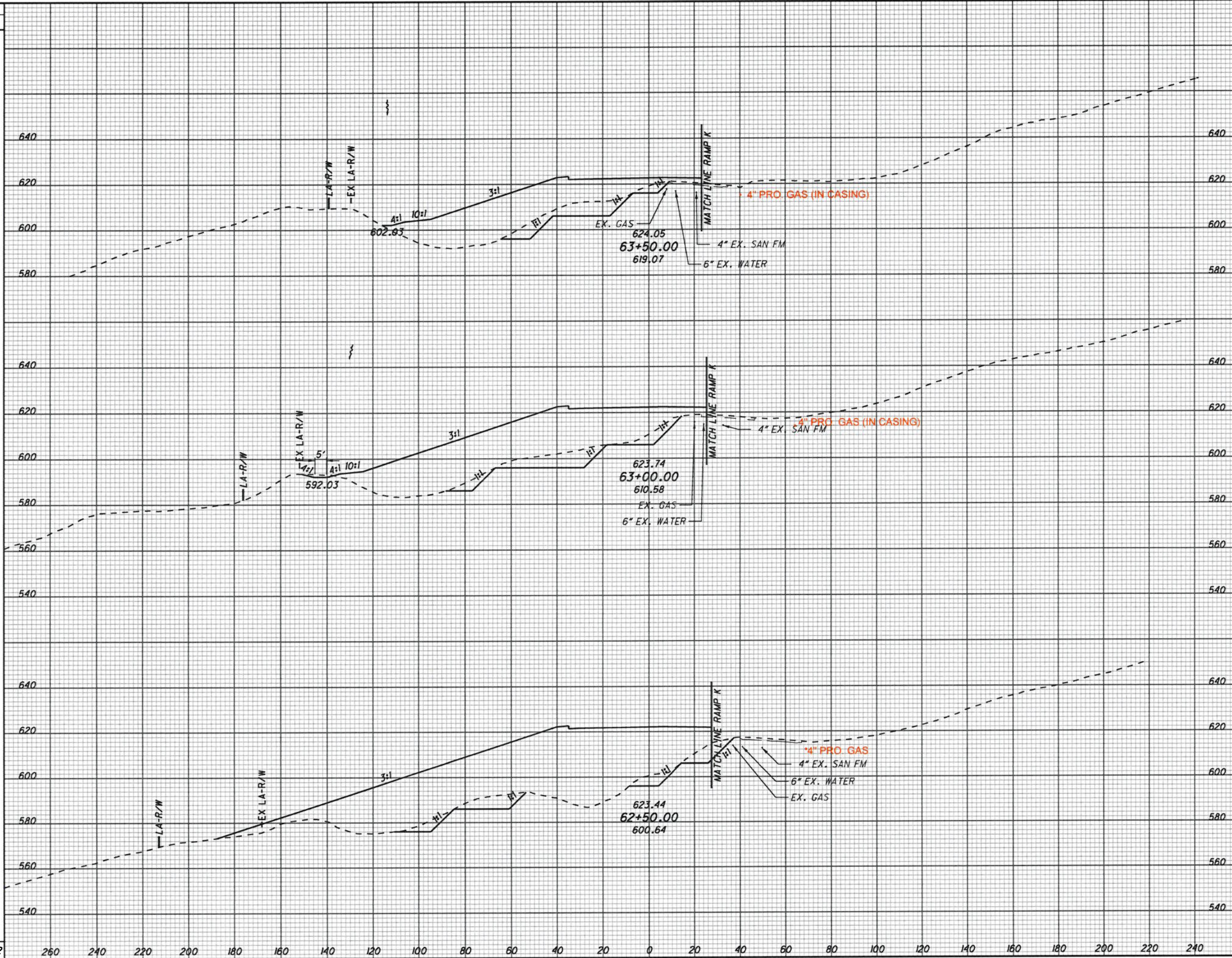
LAW-7-2.17

60F13

572
 1247

U:\173608714\LA\75923\roadway\sheets\75923XS1311-2B.dgn 5/21/2024 4:58:16 PM SLParker

SEEDING
 END WIDTH SO. YDS.
 89
 598
 126
 810
 166
 924
 2332



END AREA	VOLUME	CALCULATED		CHECKED
		CUT	FILL	
294	1762	617	4129	
372	2697	666	6495	
347	4318	845	9846	
		2128	20470	

CROSS SECTIONS S.R. 775
 STA. 62+50.00 TO STA. 63+50.00

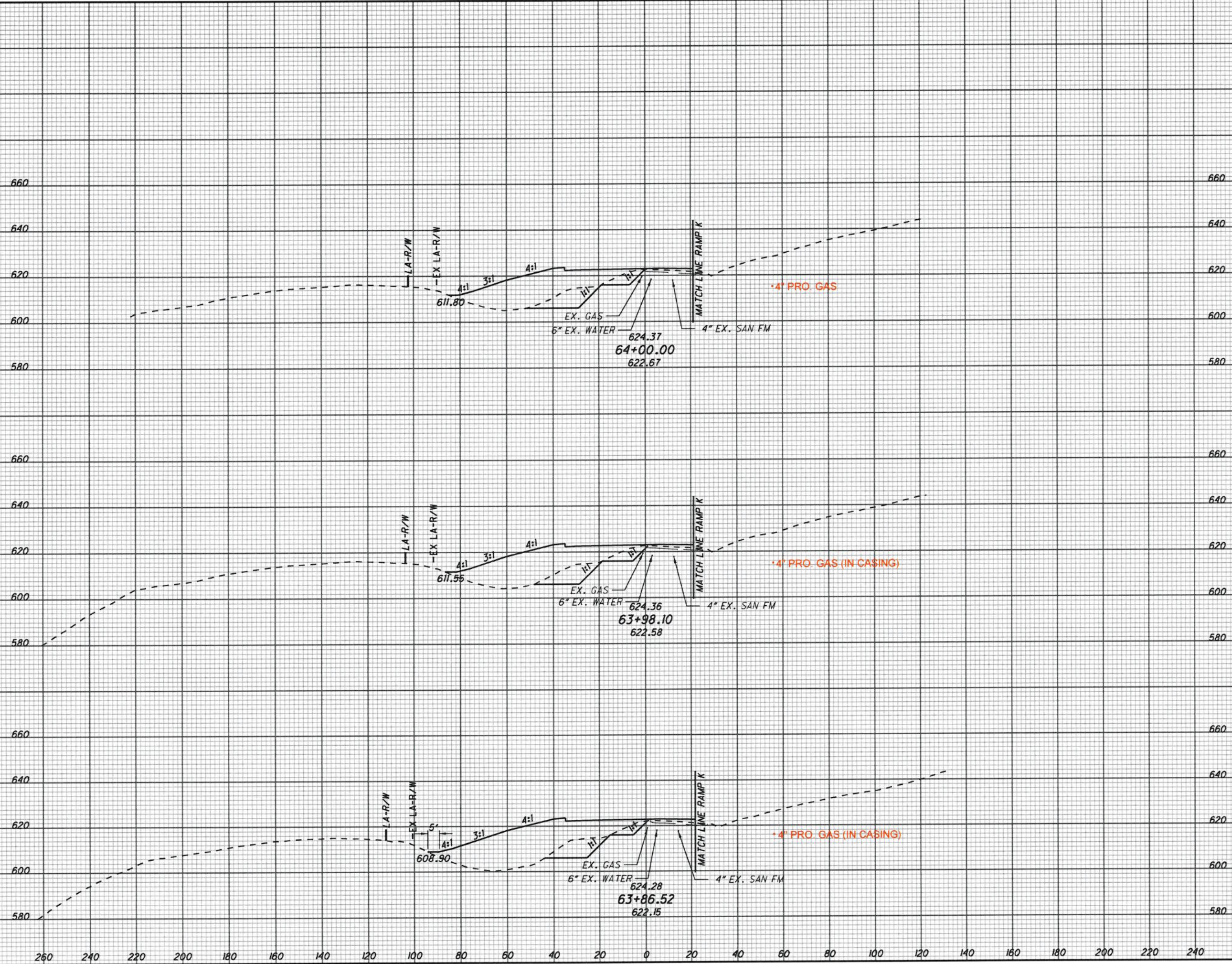
LAW-7-2.17

573
 1247

7 OF 13

U:\173608714\LANW 75923\roadway\sheet\75923XS1312-2B.dgn 5/21/2024 4:58:17 PM SLParker

SEEDING
 END WIDTH SO. YDS.
 410 260 240 220 200 180 160 140 120 100 80 60 40 20 0 20 40 60 80 100 120 140 160 180 200 220 240



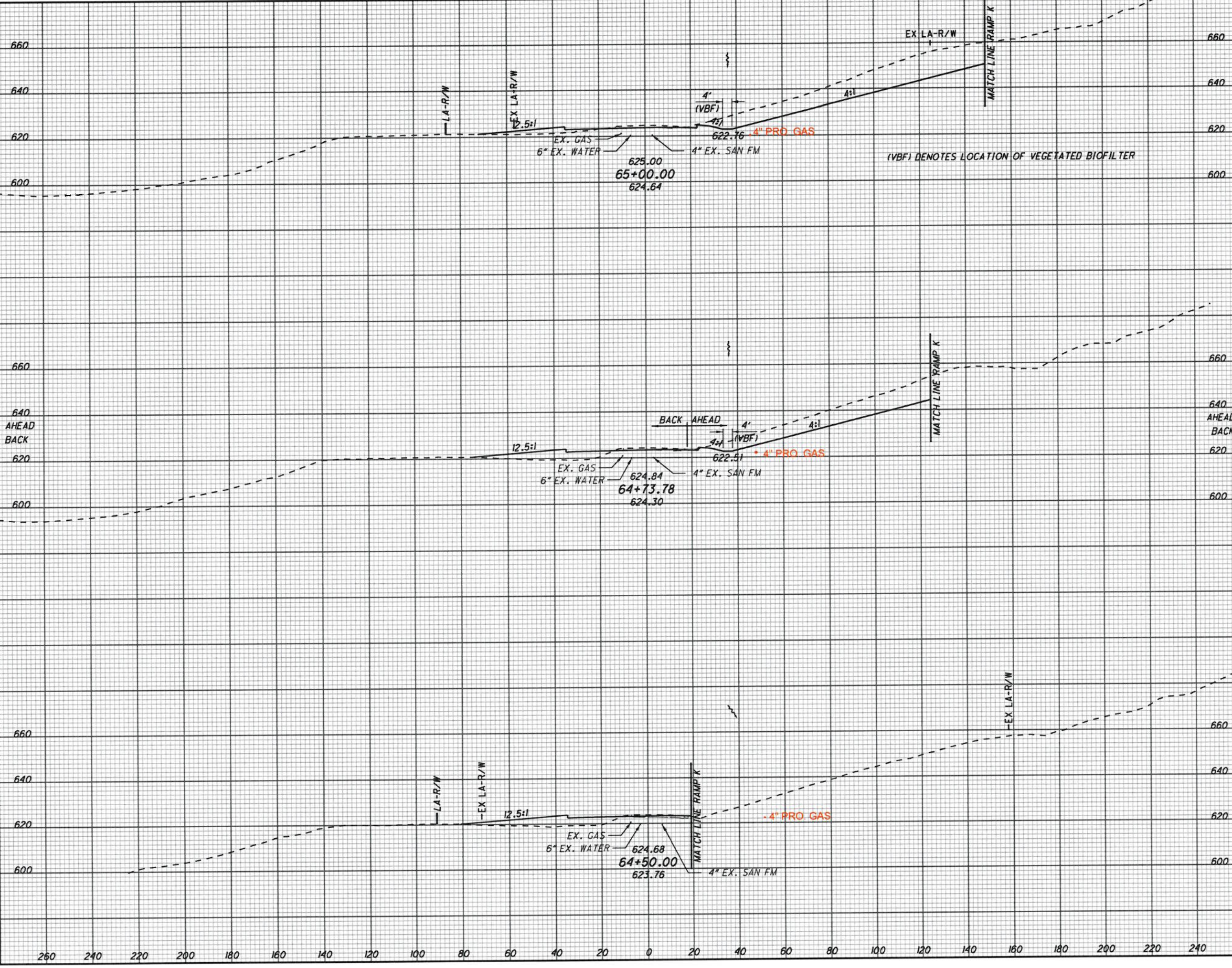
END AREA	VOLUME	
	CUT	FILL
201	916	
196	961	
182	1167	
322	1982	
417	2506	

CALCULATED SLP CHECKED ALB
 CROSS SECTIONS S.R. 775
 STA. 63+86.52 TO STA. 64+00.00
 LAW-7-2.17
 574
 1247

U:\173608714\LA\759223\roadway\sheet\75923\XS1313-2B.dgn 5/21/2024 4:58:18 PM SLParker

U:\173508714\AW\75923\roadway\sheet\75923\XS1314-2B.dgn 5/21/2024 4:58:19 PM SLParker

SEEDING	END AREA		VOLUME		CALCULATED SLP	CHECKED ALB
	CUT	FILL	CUT	FILL		
173	1021	73	807	117		
472						
151	640	167	3	167		
45	4	167				
128						
51	2	212				
299			188	1045		
899			998	1329		



SEEDING	END AREA		VOLUME		CALCULATED SLP	CHECKED ALB
	CUT	FILL	CUT	FILL		
173	1021	73	807	117		
472						
151	640	167	3	167		
45	4	167				
128						
51	2	212				
299			188	1045		
899			998	1329		

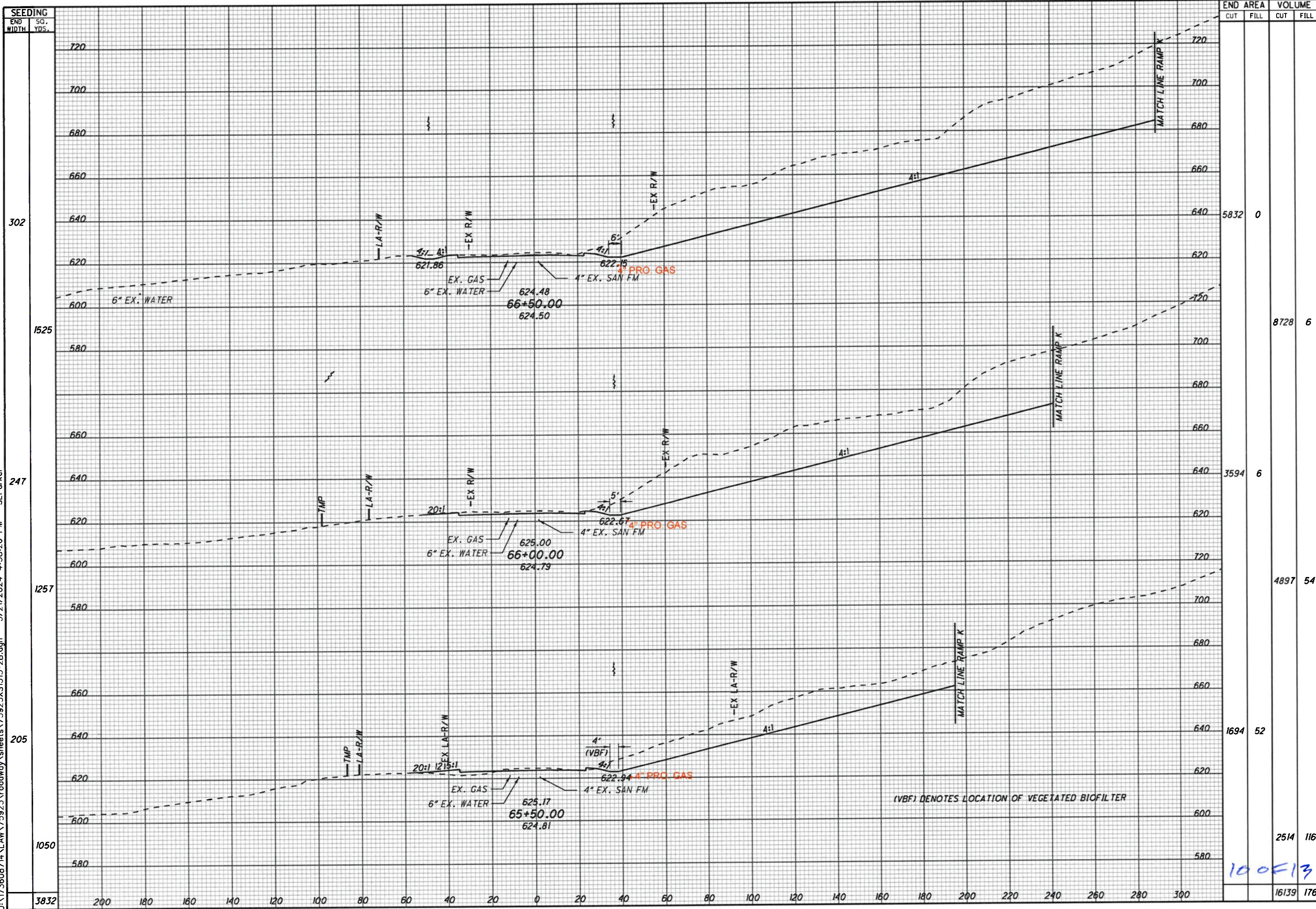
CROSS SECTIONS S.R. 775
STA. 64+00.00 TO STA. 65+00.00

LAW-7-2.17

9 OF 13

575
1247

U:\173608714\LA\75923\roadway\sheet\75923\X1315-2B.dgn 5/21/2024 4:56:20 PM SLParker



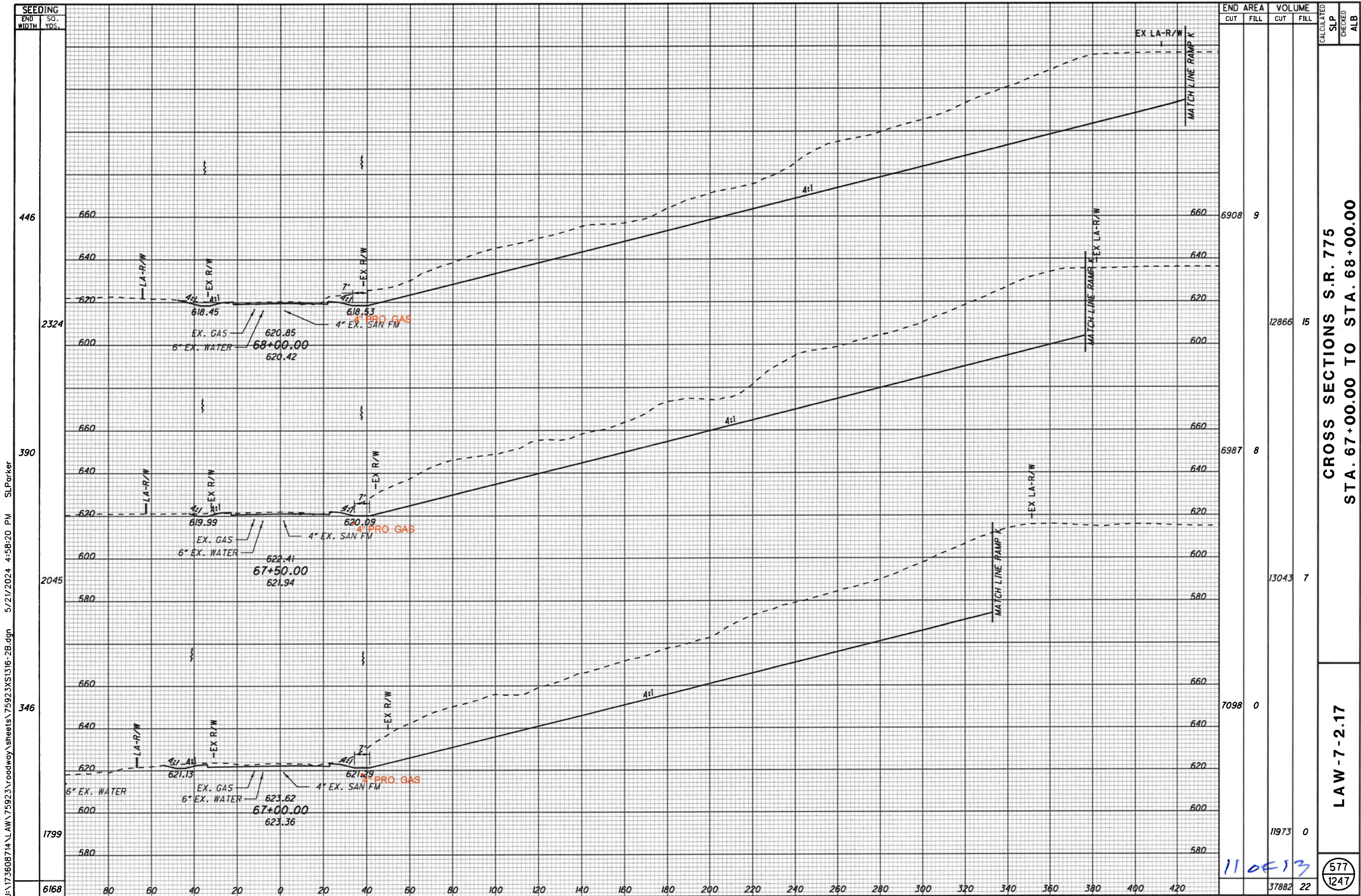
SEEDING	END AREA		VOLUME		CALCULATED SLP	CHECKED ALB
	CUT	FILL	CUT	FILL		
302	5832	0				
1525			8728	6		
247	3594	6				
1257			4897	54		
205	1694	52				
1050			2514	116		
3832			16139	176		

CROSS SECTIONS S.R. 775
STA. 65+50.00 TO STA. 66+50.00

LAW-7-2.17

100E13

576
1247



U:\173608714\LA\75923\roadway\sheet\75923XS1316-2B.dgn 5/21/2024 4:56:20 PM SLForker

SEEDING	END AREA		VOLUME	
	CUT	FILL	CUT	FILL
446	6908	9		
2324	12866	15		
390	6987	8		
2045	13043	7		
346	7098	0		
1799	11973	0		
6168	37882	22		

CROSS SECTIONS S.R. 775
STA. 67+00.00 TO STA. 68+00.00

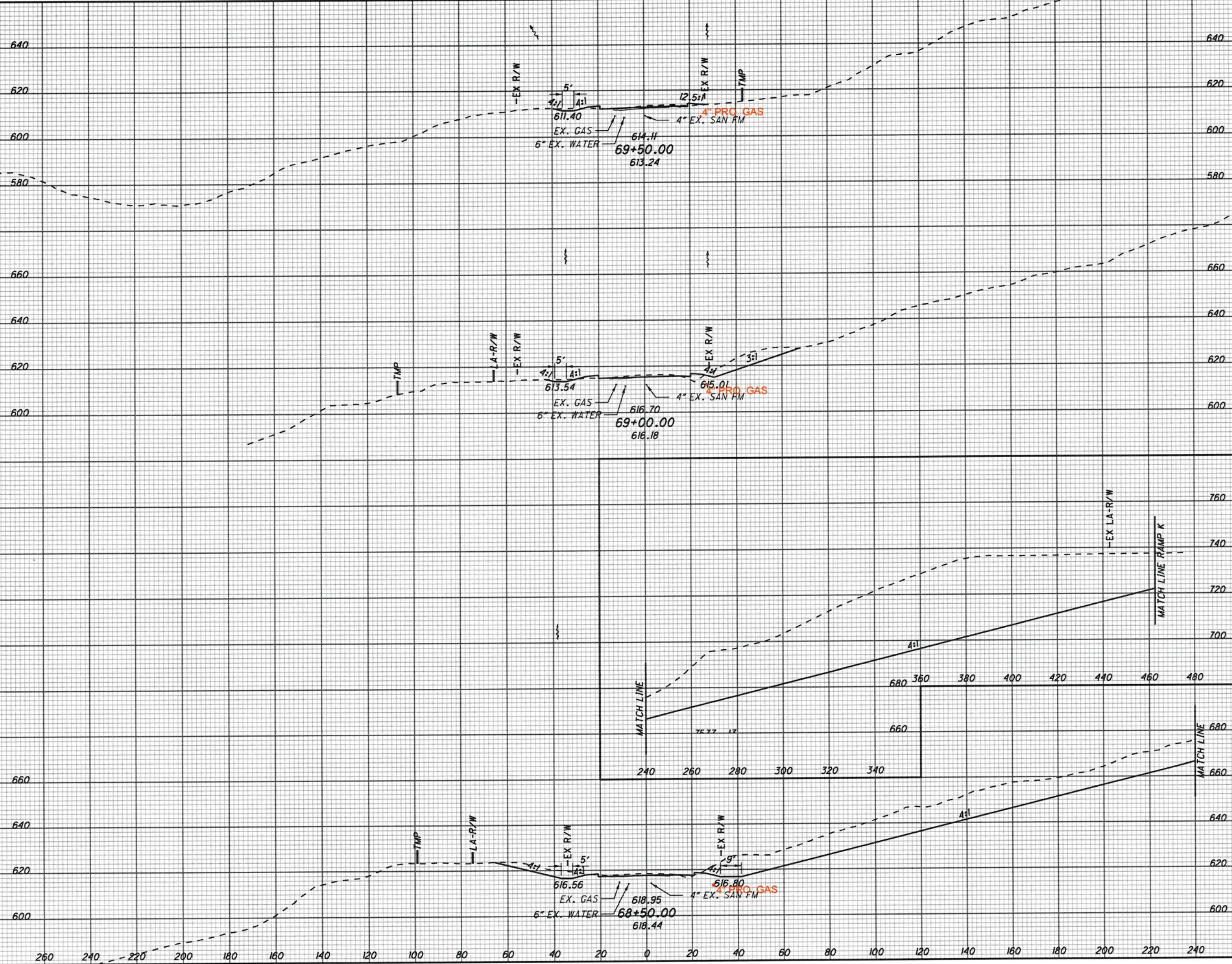
LAW-7-2.17

577
1247

110513

U:\173608714\LA\759223\roadway\sheet\75923\XS1317-2B.dgn 5/21/2024 4:58:21 PM SLParker

SEEDING	END AREA		VOLUME		CALCULATED SLP	CHECKED ALB
	CUT	FILL	CUT	FILL		
38	11	25				
339			158	53		
83	160	32				
1639			7164	42		
506	7577	13				
2646			13412	21		
4624			20734	116		



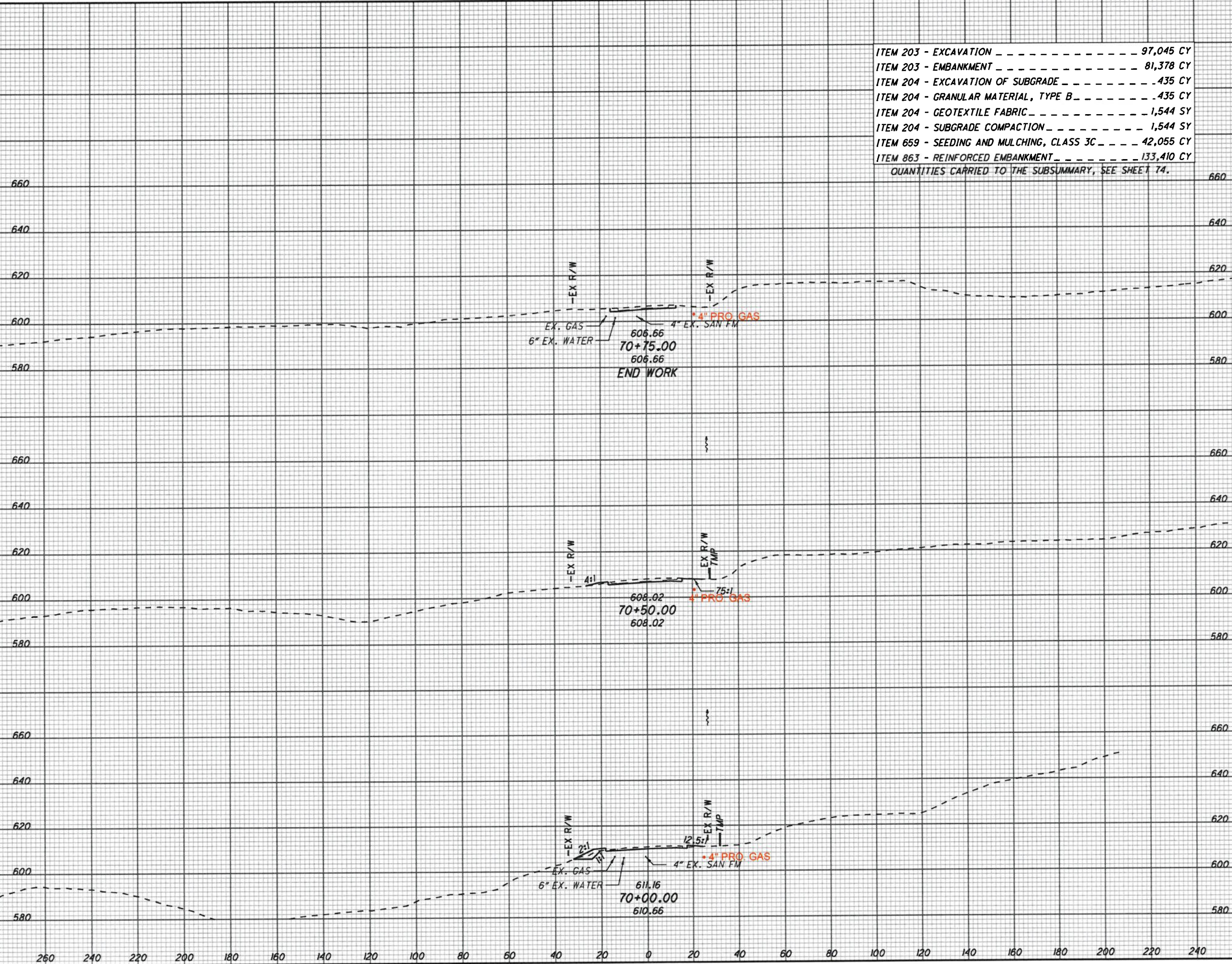
CROSS SECTIONS S.R. 775
STA. 68+50.00 TO STA. 69+50.00

LAW-7-2.17

578
1247

12 OF 13

SEEDING
 END WIDTH SO. YDS.
 10
 54
 29
 169
 32
 195
 418



ITEM 203 - EXCAVATION	97,045 CY
ITEM 203 - EMBANKMENT	81,378 CY
ITEM 204 - EXCAVATION OF SUBGRADE	435 CY
ITEM 204 - GRANULAR MATERIAL, TYPE B	435 CY
ITEM 204 - GEOTEXTILE FABRIC	1,544 SY
ITEM 204 - SUBGRADE COMPACTION	1,544 SY
ITEM 659 - SEEDING AND MULCHING, CLASS 3C	42,055 CY
ITEM 863 - REINFORCED EMBANKMENT	133,410 CY
QUANTITIES CARRIED TO THE SUBSUMMARY, SEE SHEET 74.	

END AREA	VOLUME	
	CUT	FILL
17	0	
17	2	
19	4	
36	34	
20	32	
29	53	
82	89	

CALCULATED
 SLP
 CHECKED
 ALB

CROSS SECTIONS S.R. 775
 STA. 70+00.00 TO STA. 70+75.00

LAW-7-2.17

579
 1247

U:\173608714\LA\75923\roadway\sheet\75923\XS1318-2B.dgn 5/21/2024 4:58:22 PM SLParker