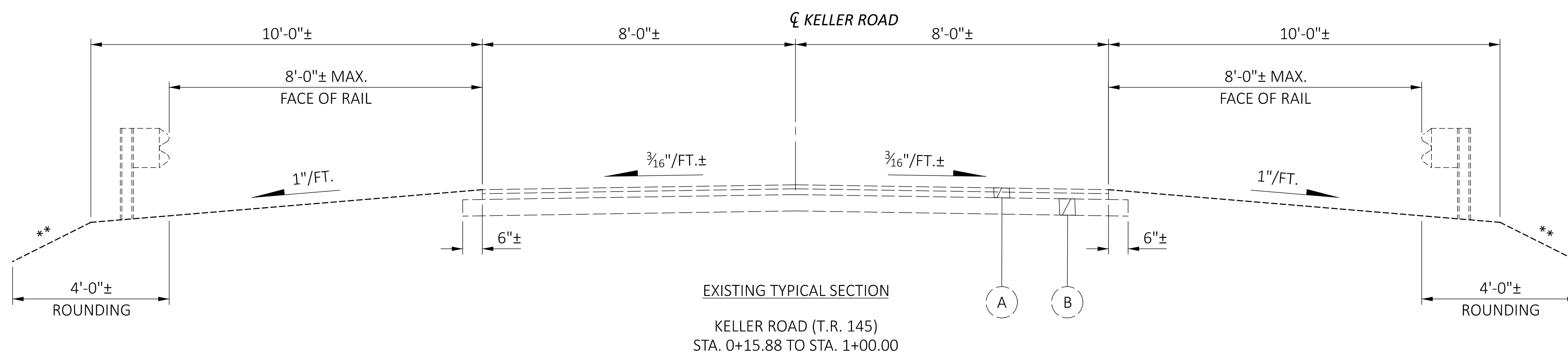
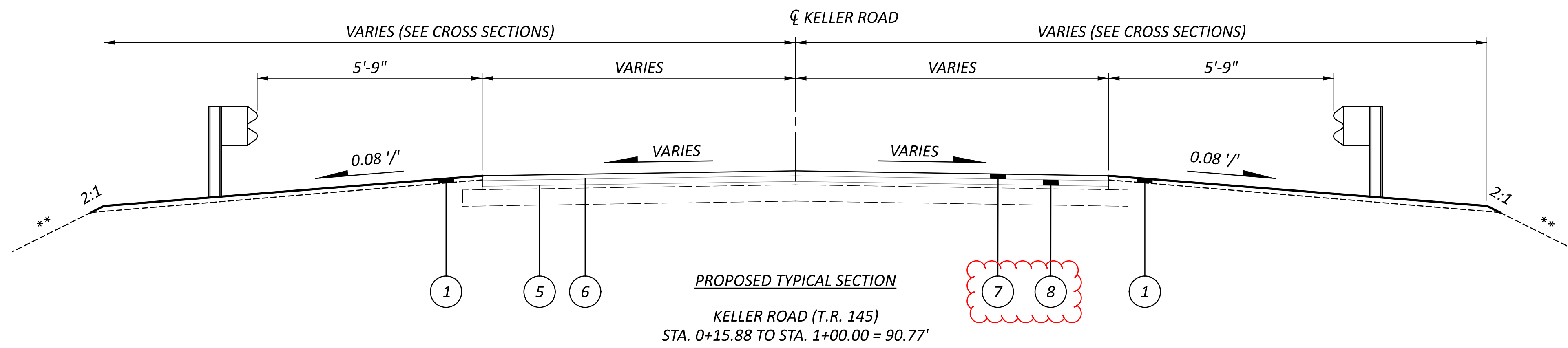


LEGEND	
(A)	EXISTING BITUMINOUS MATERIAL
(B)	EXISTING BASE MATERIAL
(1)	ITEM 203 - EMBANKMENT
(2)	ITEM 204 - SUBGRADE COMPACTION
(3)	ITEM 301 - 6" ASPHALT CONCRETE BASE
(4)	ITEM 304 - 6" AGGREGATE BASE
(5)	ITEM 407 - NON-TRACKING TACK COAT (APPLIED AT 0.09 GAL./SQ. YD.)
(6)	ITEM 407 - NON-TRACKING TACK COAT (APPLIED AT 0.06 GAL./SQ. YD.)
(7)	ITEM 441 - ASPHALT CONCRETE SURFACE COURSE, TYPE 1, (449), PG70-22M (1.50")
(8)	ITEM 441 - ASPHALT CONCRETE INTERMEDIATE COURSE, TYPE 2, (449), (1.75")
(9)	CURB, TYPE 4-C (INCLUDED WITH ITEM 606 - MGS BRIDGE TERMINAL ASSEMBLY, TYPE 1)
(10)	ITEM 617 - COMPACTED AGGREGATE, AS PER PLAN
(A)	THE ITEM 617 - COMPACTED AGGREGATE, AS PER PLAN SHOULDERS SHALL BE 2'-0"± WIDE FROM STA. 12+25.00 TO STA. 13+00.00. THEY SHALL THEN TRANSITION FROM 2'-0"± TO 5'-9"± AT STA. 13+40.75.
**	EXISTING SLOPE (2:1 MAX.)

NOTE: USE VARIABLE DEPTH MILLING TO ACHIEVE PROPOSED PROFILES.



LEGEND	
(A)	EXISTING BITUMINOUS MATERIAL
(B)	EXISTING BASE MATERIAL
(1)	ITEM 203 - EMBANKMENT
(2)	ITEM 204 - SUBGRADE COMPACTION
(3)	ITEM 301 - 6" ASPHALT CONCRETE BASE
(4)	ITEM 304 - 6" AGGREGATE BASE
(5)	ITEM 407 - NON-TRACKING TACK COAT (APPLIED AT 0.09 GAL./SQ. YD.)
(6)	ITEM 407 - NON-TRACKING TACK COAT (APPLIED AT 0.06 GAL./SQ. YD.)
(7)	ITEM 441 - ASPHALT CONCRETE SURFACE COURSE, TYPE 1, (449), PG70-22M (1.50")
(8)	ITEM 441 - ASPHALT CONCRETE INTERMEDIATE COURSE, TYPE 2, (449), (1.75")
(9)	CURB, TYPE 4-C (INCLUDED WITH ITEM 606 - MGS BRIDGE TERMINAL ASSEMBLY, TYPE 1)
(10)	ITEM 617 - COMPACTED AGGREGATE, AS PER PLAN
** EXISTING SLOPE (2:1 MAX.)	

NOTE: USE VARIABLE DEPTH MILLING TO ACHIEVE PROPOSED PROFILES.



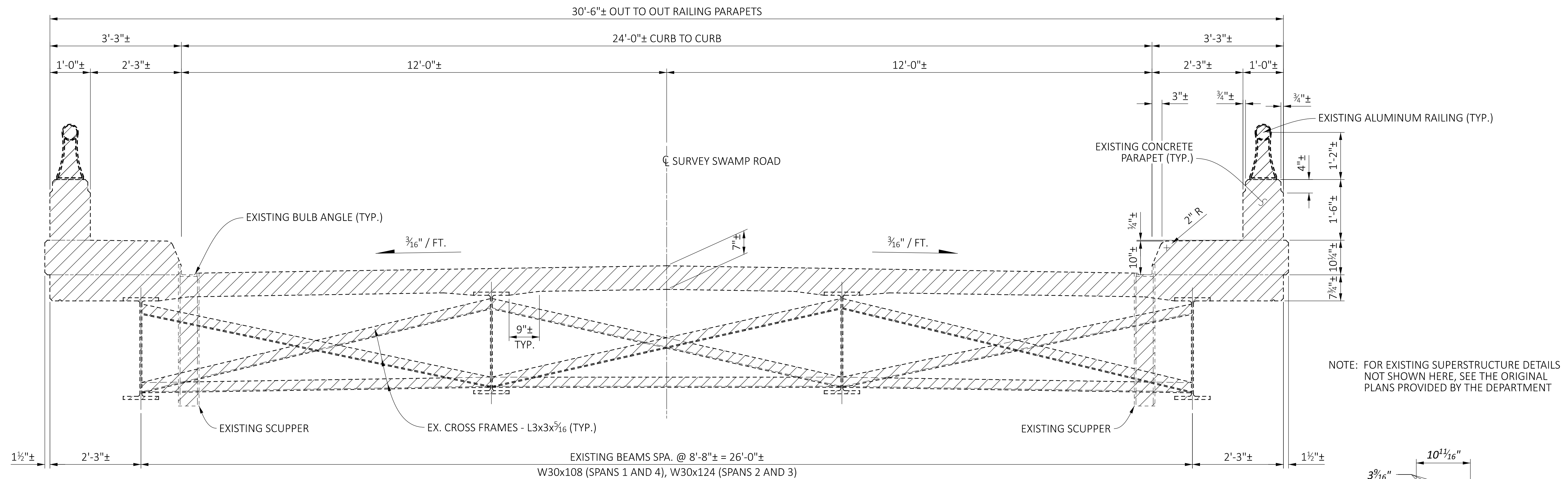
REF. NO.	SHEET NO.	STATION			LOCATION	PAVEMENT											
						254	255	301	304	407	441		617				
						PAVEMENT PLANING, ASPHALT CONCRETE, VARIABLE DEPTH	FULL DEPTH PAVEMENT SAWING	ASPHALT CONCRETE BASE, PG64-22, (449)	AGGREGATE BASE	NON-TRACKING TACK COAT	ASPHALT CONCRETE SURFACE COURSE, TYPE 1, (449), PG70- 22M	ASPHALT CONCRETE INTERMEDIATE COURSE, TYPE 2, (449)	COMPACTED AGGREGATE, AS PER PLAN				
ROAD	FROM	TO		SQ YD	FEET	CU YD	CU YD	GAL	CU YD	CU YD	CU YD						
1-FD	15	SWAMP	13+40.75	13+65.75	LT./RT.		16.1	12.8	13.3	11.5	3.2	3.7					
2-FD	15	SWAMP	16+34.25	16+59.25	LT./RT.		17.3	12.8	13.3	11.5	3.2	3.7					
1-AS	15	SWAMP	13+65.75	13+90.75	LT./RT.				15.7								
2-AS	15	SWAMP	16+09.25	16+34.25	LT./RT.				15.7								
1-SH	15	SWAMP	12+25.00	13+40.75	LT.								2.9				
2-SH	15	SWAMP	12+25.00	13+40.75	RT.								2.9				
1-P	15	SWAMP	12+25.00	13+40.75	LT./RT.	210.9				31.7	8.8	10.3					
2-P	15-17	SWAMP	16+59.25	18+21.28	LT./RT.	216	324	48.6	50.9	74.3	20.6	24.1					
3-P	16-17	KELLER	0+15.88	1+00.00	LT./RT.	214.3				30.1	8.9	10.4					
TOTALS CARRIED TO GENERAL SUMMARY						641	357	74	109	159	45	52	6				

SUBSUMMARIES

DESIGN AGENCY



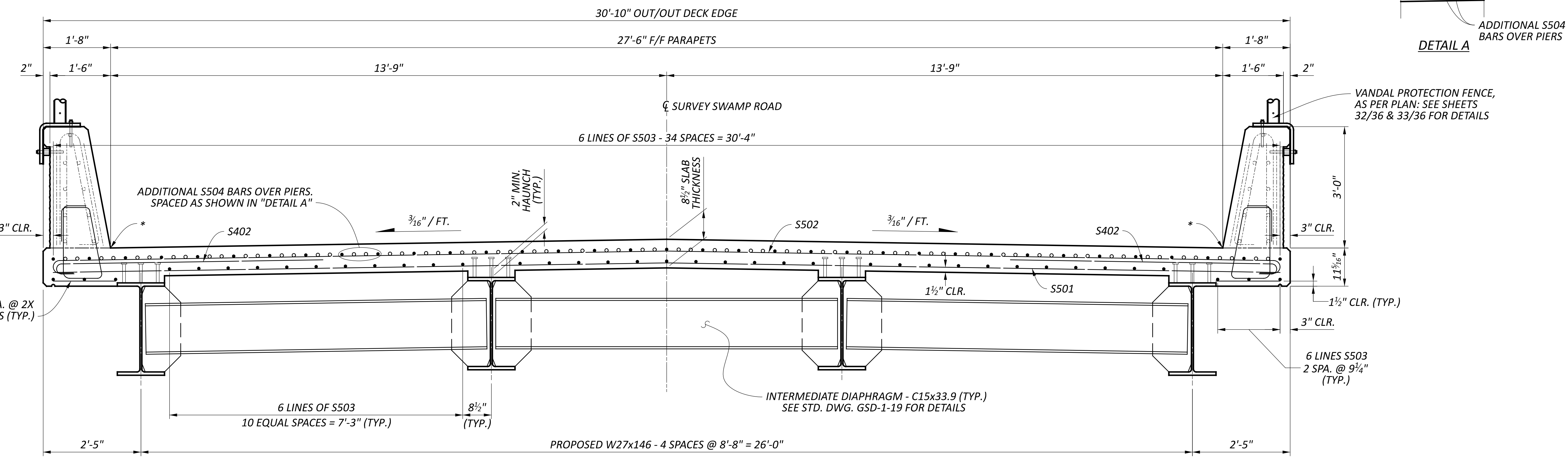
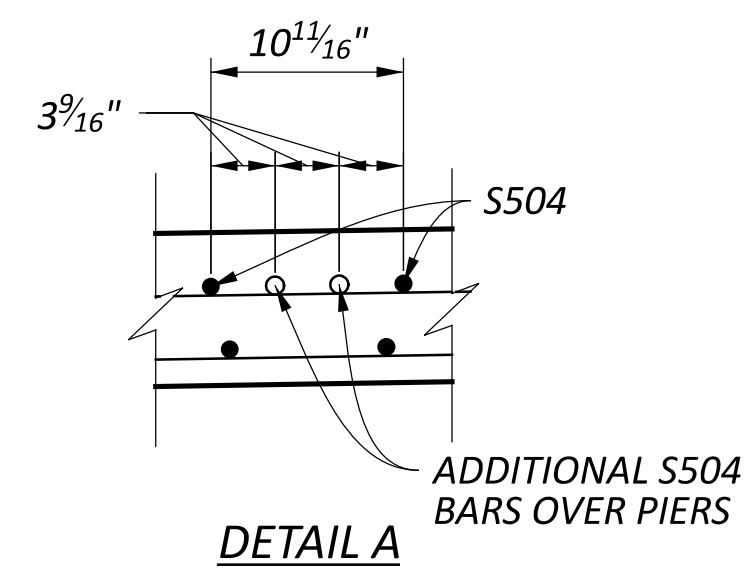
DESIGNER
TDF
 REVIEWER
TAG 10/05/23
 PROJECT ID
104637
 SHEET TOTAL
P.14 | 78



EXISTING TRANSVERSE SECTION

ITEM 202 - PORTIONS OF STRUCTURE REMOVED, AS PER PLAN (SUPERSTRUCTURE)

NOTE: FOR EXISTING SUPERSTRUCTURE DETAILS NOT SHOWN HERE, SEE THE ORIGINAL PLANS PROVIDED BY THE DEPARTMENT



PROPOSED TRANSVERSE SECTION

* SEALING OF CONSTRUCTION JOINTS WITH HMWM AS PER CMS 511.19. PROVIDE A MINIMUM BAND WIDTH OF 1'-0" CENTERED ON EACH JOINT SEALED.

SFN	4503309
DESIGN AGENCY	
DESIGNER	CHECKER
TDF	TAG
REVIEWER	
TAG	10/05/23
PROJECT ID	104637
SUBSET	TOTAL
14	36
SHEET	TOTAL
P.37	78

