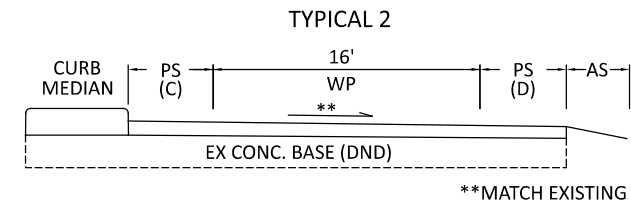


AS = AGGREGATE SHOULDER
 PS = PAVED SHOULDER
 WP = WIDTH OF PAVEMENT



RAMP PAVEMENT DATA

LOCATION	COUNTY	ROUTE	DESCRIPTION	CADD AREA (SEE SHEET XX)	254		407		442				889
					PAVEMENT PLANING, ASPHALT CONCRETE, 3.00"	NON-TRACKING TACK COAT @ 0.05 GAL./SQ.YD.	NON-TRACKING TACK COAT @ 0.08 GAL./SQ.YD.	THICKNESSES	ASPHALT CONCRETE INTERMEDIATE COURSE, 12.5 MM, TYPE A (446)	ANTI-SEGREGATION EQUIPMENT	THICKNESSES	ASPHALT CONCRETE SURFACE COURSE, 12.5 MM, TYPE A (447)	LONGITUDINAL DIAMOND GROOVING
				SQ.YD.	SQ.YD.	GAL.	GAL.	INCH	CU.YD.	CU. YD.	INCH	CU.YD.	SQ.YD.
1	FAI	I.R. 70 E.B.	RAMP "E" (SW RAMP TO SR 256 SOUTH)	1,638.0	1,638.0	81.9	131.1	1.50	68.3	136.6	1.50	68.3	1638.0
			RAMP "D" (SE LOOP TO SR 256 NORTH)	3,197.0	3,197.0	159.9	255.8	1.50	133.3	266.6	1.50	133.3	
			RAMP "C" (SE RAMP FROM SR 256)	2,866.0	2,866.0	143.3	229.3	1.50	119.5	239.0	1.50	119.5	
		I.R. 70 W.B.	RAMP "A" (NW RAMP FROM SR 256)	1,821.0	1,821.0	91.1	145.7	1.50	75.9	151.8	1.50	75.9	
			RAMP "B" (NE RAMP TO SR 256)	1,704.0	1,704.0	85.2	136.4	1.50	71.0	142.0	1.50	71.0	
SUB-TOTALS						561.4	898.3						
LOCATION 1 (TOTALS CARRIED TO SUB-SUMMARY)						11,226.0	1,459.7		468.0	936.0		468.0	1,638.0

RAMP SHOULDER DATA

LOCATION	COUNTY	ROUTE	DESCRIPTION	RAMP LENGTH	RAMP PAVED SHOULDER WIDTH (FEET)		RAMP SHOULDER AREA	TYPICAL	254		407	407	408	442			617	
					A	B			SQ.YD.	PAVEMENT PLANING, ASPHALT CONCRETE, 3.00"	NON-TRACKING TACK COAT @ 0.05 GAL./SQ.YD.	NON-TRACKING TACK COAT @ 0.08 GAL./SQ.YD.	PRIME COAT, AS PER PLAN @ 0.40 GAL./SQ.YD.	THICKNESSES	ASPHALT CONCRETE INTERMEDIATE COURSE, 12.5 MM, TYPE A (446)	THICKNESSES	ASPHALT CONCRETE SURFACE COURSE, 12.5 MM, TYPE A (447)	THICKNESSES
				FEET			SQ.YD.		SQ.YD.	GAL.	GAL.	GAL.	INCH	CU.YD.	INCH	CU.YD.	INCH	CU.YD.
1	FAI	I.R. 70 E.B.	RAMP "E" (SW RAMP TO SR 256 SOUTH)	965	3	3	643.3	1	643.3	32.2	51.5	169.1	1.50	26.9	1.50	26.9	2.0	35.7
			RAMP "D" (SE LOOP TO SR 256 NORTH)	1,383	3	3	922.0	1/2	922.0	46.1	73.8	234.7	1.50	38.5	1.50	38.5	2.0	41.1
			RAMP "C" (SE RAMP FROM SR 256)	1,536	3	3	1,024.0	1/2	1,024.0	51.2	82.0	281.6	1.50	42.7	1.50	42.7	2.0	46.8
		I.R. 70 W.B.	RAMP "A" (NW RAMP FROM SR 256)	581	3	3	387.3	1	387.3	19.4	31.0	103.3	1.50	16.2	1.50	16.2	2.0	21.5
			RAMP "B" (NE RAMP TO SR 256)	951	3	3	634.0	1	634.0	31.7	50.8	169.1	1.50	26.5	1.50	26.5	2.0	35.2
SUB-TOTALS										180.6	289.1							
LOCATION 1 (TOTALS CARRIED TO SUB-SUMMARY)									3,610.6	469.7		957.8		150.8		150.8		180.3

FAI/LIC-70-0.00/0.00

MODEL: Sheet PAPER: 17x11 (in.) DATE: 9/6/2022 TIME: 4:05:45 PM USER: jkuz1 pwc:\hobol-pw-bentley.com\shahid-pw-02\Documents\01 Active Projects\Distifct 05\Lick\02-Engineering\Roadway\Sheets\25436_G0005.dgn

RAMP PAVEMENT DATA

DESIGN AGENCY



DESIGNER
LME

REVIEWER
JSL 05/01/22

PROJECT ID
25436

SHEET TOTAL
12 44

LOCATION 1 SHEET TOTALS										ITEM	ITEM EXT.	TOTAL	UNIT	DESCRIPTION
2	3		8	9	10	11	12		14					
														ROADWAY
9.52										209	60500	9.52	MILE	LINEAR GRADING
														PAVEMENT
25										253	02000	25	CY	PAVEMENT REPAIR
						1,880				254	01000	1,880	SY	PAVEMENT PLANING, ASPHALT CONCRETE, 1.25"
			87,631	40,777	14,091				1,151	254	01000	143,650	SY	PAVEMENT PLANING, ASPHALT CONCRETE, 1.75"
							14,837			254	01000	14,837	SY	PAVEMENT PLANING, ASPHALT CONCRETE, 3.00"
			7,011	3,263	1,128	160	1,930		92	407	20000	13,584	GAL	NON-TRACKING TACK COAT
				4,311			958			408	10001	5,269	GAL	PRIME COAT, AS PER PLAN
						66				441	70000	66	CY	ASPHALT CONCRETE SURFACE COURSE, TYPE 1, (449), PG64-22
			4,260		686		936		56	442	00100	5,938	CY	ANTI-SEGREGATION EQUIPMENT
			4,260	1,983	686		619		56	442	10300	7,604	CY	ASPHALT CONCRETE SURFACE COURSE, 12.5 MM, TYPE A (447)
							619			442	10080	619	CY	ASPHALT CONCRETE INTERMEDIATE COURSE, 12.5 MM, TYPE A (446)
									414	516	31011	414	FT	2" DEEP JOINT SEALER, AS PER PLAN
				599			181			617	10101	780	CY	COMPACTED AGGREGATE, AS PER PLAN
				9.22						618	40600	9.22	MILE	RUMBLE STRIPS, SHOULDER (ASPHALT CONCRETE)
							1,638			889	10000	1,638	SY	LONGITUDINAL DIAMOND GROOVING
	5									SPECIAL	69098000	5	EACH	REMOVAL AND STORAGE OF ROADWAY SENSOR
	5									SPECIAL	69098000	5	EACH	ROAD WEATHER INFORMATION SYSTEM (RWIS) SENSOR



LOC 1	LOC 2	PLAN SPLITS		ITEM	ITEM EXT.	GRAND TOTAL	UNIT	DESCRIPTION	SEE SHEET
		01/IMS/PV	02/IMS/BR						
								ROADWAY	
	103	103		203	10000	103	CY	EXCAVATION	
	508	508		204	10000	508	SY	SUBGRADE COMPACTION	
9.52	38.20	47.72		209	60500	47.72	MILE	LINEAR GRADING	
								EROSION CONTROL	
	500	500		659	00510	500	SY	SEEDING AND MULCHING, CLASS 2	
	1,000	1,000		832	30000	1,000	EACH	EROSION CONTROL	
								PAVEMENT	
25	140	165		253	02000	165	CY	PAVEMENT REPAIR	
1,880	2,032	3,912		254	01000	3,912	SY	PAVEMENT PLANING, ASPHALT CONCRETE, 1.25"	2
143,650	444,608	588,258		254	01000	588,258	SY	PAVEMENT PLANING, ASPHALT CONCRETE, 1.75"	2
14,837		14,837		254	01000	14,837	SY	PAVEMENT PLANING, ASPHALT CONCRETE, 3.00"	2
	85	85		301	56000	85	CY	ASPHALT CONCRETE BASE, PG64-22, (449)	
13,584	35,775	49,359		407	20000	49,359	GAL	NON-TRACKING TACK COAT	
5,269	17,855	23,124		408	10001	23,124	GAL	PRIME COAT, AS PER PLAN	2
66	89	155		441	70000	155	CY	ASPHALT CONCRETE SURFACE COURSE, TYPE 1, (449), PG64-22	
5,938	13,949	19,887		442	00100	19,887	CY	ANTI-SEGREGATION EQUIPMENT	
7,604	21,616	29,220		442	10300	29,220	CY	ASPHALT CONCRETE SURFACE COURSE, 12.5 MM, TYPE A (447)	
619				442	10080	619	CY	ASPHALT CONCRETE INTERMEDIATE COURSE, 12.5 MM, TYPE A (446)	
414	168	582		516	31011	582	FT	2" DEEP JOINT SEALER, AS PER PLAN	2
780	2,480	3,260		617	10101	3,260	CY	COMPACTED AGGREGATE, AS PER PLAN	2
9.22	36.99	46.21		618	40600	46.21	MILE	RUMBLE STRIPS, SHOULDER (ASPHALT CONCRETE)	
1,638		1,638		889	10000	1,638	SY	LONGITUDINAL DIAMOND GROOVING	
5		5		SPECIAL	69098000	5	EACH	REMOVAL AND STORAGE OF ROADWAY SENSOR	3
5		5		SPECIAL	69098000	5	EACH	ROAD WEATHER INFORMATION SYSTEM (RWIS) SENSOR	3
		LS		SPECIAL	69098400		LS	PAVER MOUNTED THERMAL PROFILING (PMTP)	3

GENERAL SUMMARY

DESIGN AGENCY



DESIGNER

LME

REVIEWER

JSL 05/01/22

PROJECT ID

25436

SHEET TOTAL

24 44

STANDARD DRAWINGS AND SUPPLEMENTAL SPECIFICATIONS

REFER TO THE FOLLOWING STANDARD DRAWINGS:
EXJ-2-81 DATED: 7/19/2002

REFER TO THE FOLLOWING SUPPLEMENTAL SPECIFICATIONS:

800 DATED: (SEE TITLE SHEET)
832 DATED: (SEE TITLE SHEET)
844 DATED: 4/20/2018
849 DATED: 1/18/2013

EXISTING STRUCTURE VERIFICATION

DETAILS AND DIMENSIONS SHOWN ON THESE PLANS PERTAINING TO THE EXISTING STRUCTURES HAVE BEEN OBTAINED FROM PLANS OF THE EXISTING STRUCTURES AND FROM FIELD OBSERVATIONS AND MEASUREMENTS, CONSEQUENTLY, THEY ARE INDICATIVE OF THE EXISTING STRUCTURES AND THE PROPOSED WORK, BUT THEY SHALL BE CONSIDERED TENTATIVE AND APPROXIMATE. THE CONTRACTOR IS REFERRED TO CMS SECTIONS 102.05, 105.02, AND 513.04.

BASE CONTRACT BID PRICES UPON A RECOGNITION OF THE UNCERTAINTIES DESCRIBED ABOVE AND UPON A PREBID EXAMINATION OF THE EXISTING STRUCTURES. HOWEVER, THE DEPARTMENT WILL PAY FOR ALL PROJECT WORK BASED UPON ACTUAL DETAILS AND DIMENSIONS THAT HAVE BEEN VERIFIED IN THE FIELD.

CONTINGENCY QUANTITIES

THE CONTRACTOR SHALL NOT ORDER MATERIALS OR PERFORM WORK FOR ITEMS DESIGNATED BY PLAN NOTE TO BE USED "AS DIRECTED BY THE ENGINEER" UNLESS AUTHORIZED BY THE ENGINEER. THE ACUTAL WORK LOCATIONS AND QUANTITIES USED FOR SUCH ITEMS SHALL BE INCORPORATED INTO THE FINAL CHANGE ORDER GOVERNING COMPLETION OF THIS PROJECT.

WORK LIMITS

THE WORK LIMITS SHOWN ON THESE PLANS ARE FOR PHYSICAL CONSTRUCTION ONLY. PROVIDE THE INSTALLATION AND OPERATION OF ALL WORK ZONE TRAFFIC CONTROL AND WORK ZONE TRAFFIC CONTROL DEVICES REQUIRED BY THESE BY THESE PLANS WHETHER INSIDE OR OUTSIDE THESE WORK LIMITS.

ITEM 202 - REMOVAL MISC: HAND-CHIPPING LOOSE AND DISINTEGRATED CONCRETE

THIS WORK CONSISTS OF REMOVING LOOSE AND DISINTEGRATED CONCRETE FROM THE PORTION OF THE NORTH CONCRETE DECK EDGE AND RAILING OF STRUCTURE FAI-70-0118R WHICH IS SHOWING FAILURE. REMOVAL WITHIN THIS AREA SHALL BE ACCOMPLISHED BY MEANS OF HAND-CHIPPING WITH A LIGHTWEIGHT HAMMER. THE LIMITS OF THIS WORK SHALL BE AT THE DIRECTION OF THE ENGINEER. THE DEPARTMENT WILL MEASURE THE QUANTITY ON A SQUARE FOOT BASIS AND WILL PAY FOR THE ACCEPTED QUANTITY AT THE CONTRACT PRICE FOR ITEM 202 - REMOVAL MISC: HAND-CHIPPING LOOSE AND DISINTEGRATED CONCRETE. AN ESTIMATED QUANTITY OF 6 SF, APPROXIMATELY EQUAL TO THE AREA OF THE CONCRETE FAILURE, HAS BEEN CARRIED TO THE BRIDGE SUMMARY.

ITEM 514 - FIELD PAINTING, MISC.: MAIN MEMBERS

THIS ITEM SHALL INCLUDE PAINTING, AS WELL AS THE SURFACE PREPARATION, OF THE MAIN MEMBERS IN THE FIELD WITH PRIME, INTERMEDIATE, AND SURFACE COATS, AS DIRECTED BY THE ENGINEER. THE PAINT MAY BE APPLIED BY BRUSH ACCORDING TO 514.17E. SOLVENT CLEAN THE MAIN MEMBERS AS PER SSPC-SP 1 AND SSPC-SP 2 PRIOR TO PAINTING ACCORDING TO ITEM 514.

THE CONTRACTOR SHALL PROVIDE CONTAINMENT TO PROVIDE PROPER CURING TEMPERATURES.

THE FINISH COAT COLOR SHALL BE GREEN AMS-595A-14066.

THE CONTRACTOR WILL BE FINANCIALLY RESPONSIBLE FOR ANY DAMAGE OR INJURY TO PUBLIC OR PRIVATE PROPERTY DURING THE FIELD PAINTING OPERATION.

PAYMENT FOR ALL LABOR, EQUIPMENT, MATERIALS, AND CONTAINMENT FOR CURING SHALL BE INCLUDED IN THE CONTRACT BID FOR ITEM 514 - FIELD PAINTING, MISC.: MAIN MEMBERS, SQUARE FOOT.

ITEM 614 - MAINTAINING TRAFFIC (AT ALL TIMES)

SEE THE GENERAL MAINTENANCE OF TRAFFIC NOTES WRITTEN IN THIS PLAN FOR THE MINIMUM LANES OF TRAFFIC IN EACH DIRECTION THAT WILL BE MAINTAINED AT ALL TIMES.

ALL WORK AND TRAFFIC CONTROL DEVICES SHALL BE IN ACCORDANCE WITH CMS 614 AND OTHER APPLICABLE PORTIONS OF THE SPECIFICATIONS, AS WELL AS THE OHIO MANUAL OF UNIFORM TRAFFIC CONTROL DEVICES. PAYMENT FOR ALL LABOR, EQUIPMENT, AND MATERIALS SHALL BE INCLUDED IN THE LUMP SUM CONTRACT PRICE FOR ITEM 614 - MAINTAINING TRAFFIC, UNLESS SEPARATELY ITEMIZED IN THE PLAN.

① ITEM 202 - WEARING COURSE REMOVED

**② ITEM 407 - NON-TRACKING TACK COAT
ITEM 442 - ASPHALT CONCRETE SURFACE COURSE, 12.5 MM, TYPE A (447)**

③ ITEM 512 - SEALING CONCRETE BRIDGE DECKS WITH HMWM RESIN, AS PER PLAN

THIS WORK CONSISTS OF SEALING CONCRETE DECKS WITH HMWM RESIN AS PER CMS 512.04 AND 705.25. THE CONTRACTOR SHALL ENSURE ALL DIRT AND DEBRIS IS CLEARED FROM THE BRIDGE AND EXPANSION JOINTS PRIOR TO SEALING. ALL OTHER REPAIR WORK SHALL BE DONE PRIOR TO SEALING THE BRIDGE DECK. REMOVE ALL PERMANENT PAVEMENT MARKINGS PRIOR TO SEALING THE BRIDGE DECK. REMOVE ALL EXISTING SEALANTS PRIOR TO SEALING BRIDGE DECK. PERFORM ALL CONCRETE PATCHING REQUIREMENTS PRIOR TO SEALING THE DECK. THE CONTRACTOR SHALL ENSURE THAT SRS IS NOT APPLIED TO THE EXPANSION JOINTS OF THE BRIDGE. THE ABOVE WORK SHALL BE INCLUDED IN THE CONTRACT BID PRICE FOR ITEM 512 - SEALING CONCRETE BRIDGE DECKS WITH HMWM RESIN, AS PER PLAN. ESTIMATED QUANTITIES OF ITEM 512 - SEALING CONCRETE BRIDGE DECKS WITH HMWM RESIN, AS PER PLAN HAVE BEEN CARRIED TO THE BRIDGE SUMMARY.

④ ITEM 516 - 2" DEEP JOINT SEALER, AS PER PLAN

SEE ROADWAY GENERAL NOTES FOR NOTES PERTAINING TO THIS ITEM. FOR THE BRIDGE LOCATIONS PROVIDED, REMOVE ANY EXISTING SEAL MATERIAL, FOREIGN MATERIAL, AND DEBRIS FROM THE EXISTING JOINT BETWEEN THE ASPHALT CONCRETE AND THE STRUCTURE CONCRETE. ANY SPALLS ADJACENT TO THE JOINT LESS THAN OR EQUAL TO 2" SHALL BE CLEANED AND SEALED WITH THIS ITEM. SPALLS GREATER THAN 2" SHALL BE REPAIRED PER ITEM #5 AS SHOWN ON THIS SHEET.

ALL QUANTITIES FOR ITEM 516 - 2" JOINT SEALER, AS PER PLAN SHALL BE CARRIED TO THE GENERAL SUMMARY.

⑤ ITEM 519 - SPECIAL - PATCHING CONCRETE STRUCTURE: CLASS QC2 CONCRETE WITH ACCELERATING ADMIXTURE

TO EXPEDITE WORK, CLASS QC2 CONCRETE WITH AN ACCELERATING ADMIXTURE SIKA RAPID-1 OR ANY APPROVED EQUIVALENT ADMIXTURE SHALL BE USED TO ACHIEVE 3,000 PSI COMPRESSIVE STRENGTH IN 12 HOURS. USE A NON-CHLORIDE ACCELERATING ADMIXTURE AND PROVIDE DOCUMENTATION THAT THE MIX WILL PROVIDE THE STRENGTH IN THE SPECIFIED TIME.

THIS ITEM SHALL CONFORM TO CMS 519 WITH THE FOLLOWING CONDITIONS AND REVISIONS:

PROVIDE PATCHES WITH A MINIMUM DEPTH OF 6".

AT LEAST 5 DAYS PRIOR TO CONSTRUCTION, THE CONTRACTOR SHALL SUBMIT TO THE ENGINEER FOR APPROVAL A SCHEDULE OF REPAIR WORK ITEMS TO BE COMPLETED. THE SCHEDULE SHALL INCLUDE A BREAKDOWN OF ALL MAJOR WORK ACTIVITIES ON AN HOURLY BASIS. REPAIR WORK SHALL NOT BEGIN UNTIL THE SCHEDULE IS APPROVED BY THE ENGINEER.

THE CONTRACTOR SHALL CONTINUE THE WET CURE FOR THE MAXIMUM NUMBER OF HOURS POSSIBLE DURING THE PERMITTED LANE CLOSURE. THE CLOCK STARTS FOR THE WET CURE WHEN THE CONCRETE PLACEMENT IS COMPLETE.

TRAFFIC WILL NOT BE PERMITTED ON THE FINISHED CONCRETE SURFACE UNTIL AFTER COMPLETION OF A WET CURE WHICH LASTS UP UNTIL 1 HOUR BEFORE THE PERMITTED LANE CLOSURE TIMEFRAME ENDS. AT THIS POINT THE WET CURE WILL BE PULLED, SURFACE DRIED, AND CONCRETE SPRAY CURE APPLIED. DURING THIS TIMEFRAME A MINIMUM OF TWO TEST BEAMS BREAKS, WITH AN AVERAGE MODULUS OF RUPTURE OF 400 PSI, MUST BE ATTAINED. THE CONTRACTOR SHALL BEGIN POURING CONCRETE EARLY ENOUGH IN THE WORK WINDOW TO ALLOW ADEQUATE TIME TO OBTAIN THE NECESSARY 400 PSI BREAKS.

SEAL ALL EXPOSED PATCH CONSTRUCTION JOINTS AT THE END DAMS, CURBS, PARAPET TOES, AND CONSTRUCTION JOINTS AS PER CMS 511.19 WITH HMWM SEALER.

ESTIMATED QUANTITIES FOR EACH STRUCTURE HAVE BEEN CARRIED TO THE BRIDGE SUMMARY.

PAYMENT FOR ALL OF THE ABOVE DESCRIBED LABOR, EQUIPMENT, AND MATERIALS WILL BE MADE AT THE CONTRACT PRICE BID FOR ITEM 519 - SPECIAL - PATCHING CONCRETE STRUCTURE: CLASS QC2 WITH ACCELERATING ADMIXTURE.

⑥ ITEM 844 - CONCRETE PATCHING WITH GALVANIC ANODE PROTECTION

THIS WORK CONSISTS OF PATCHING CONCRETE PIER COLUMNS AS DIRECTED BY THE ENGINEER (SEE DETAILS BELOW FOR LAYOUTS). SEE PIER DETAIL SHEETS FOR ADDITIONAL DETAILS. APPROXIMATE LOCATIONS AND QUANTITIES ARE LISTED BELOW.

BRIDGE NO. FAI-70-0118L

PIER 1: COLUMN 1, EAST FACE - (1.33' x 2.5') = 3.325 SF
COLUMN 3, EAST FACE - (2.0' x 2.5') = 5.0 SF
PIER 2: COLUMN 1, NORTH FACE - (1.5' x 1.5') = 2.25 SF
PIER 3: COLUMN 1, WEST FACE - (1.67' x 1.83') = 3.056 SF
COLUMN 2, WEST FACE - (2.67' x 3.33') = 8.889 SF
COLUMN 3, WEST FACE - (1.5' x 2.67') = 4.0 SF
TOTAL = 27 SF

BRIDGE NO. FAI-70-0118R

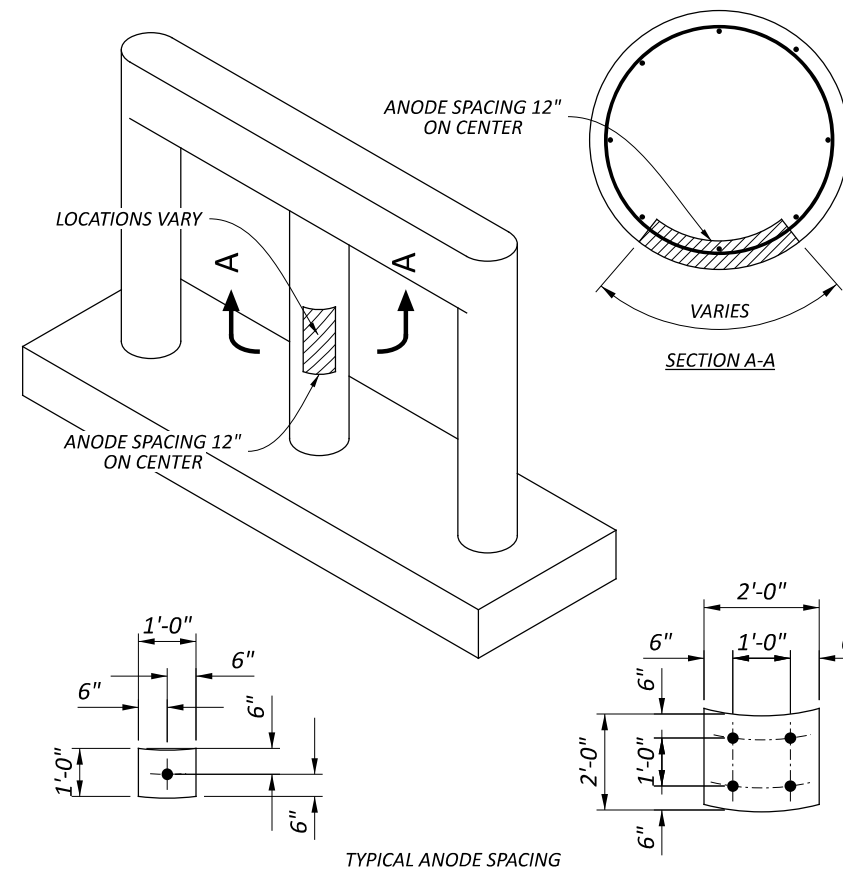
PIER 1: COLUMN 3, EAST FACE - (1.5' x 2.0') = 3.0 SF
PIER 2: COLUMN 1, EAST FACE - (1.0' x 1.0') = 1.0 SF
COLUMN 4, WEST FACE - (2.5' x 3.0') = 7.5 SF
TOTAL = 12 SF

BRIDGE NO. LIC-70-0072L

PIER 2: COLUMN 5, WEST TOP - (1.0' x 2.5') = 2.5 SF
TOTAL = 3 SF

THESE QUANTITIES HAVE BEEN CARRIED TO THE BRIDGE SUMMARY.

ALL WORK SHALL BE DIRECTED BY AND TO THE SATISFACTION OF THE ENGINEER. PAYMENT FOR ALL OF THE ABOVE DESCRIBED LABOR, EQUIPMENT, AND MATERIALS WILL BE MADE AT THE CONTRACT PRICE BID FOR ITEM 844 - CONCRETE PATCHING WITH GALVANIC ANODE PROTECTION, SQ. FT.



FAI\LIC-70-0.00\0.00

MODEL: Bridge Notes PAPER SIZE: 17x11 (in.) DATE: 9/8/2022 TIME: 9:05:15 AM USER: cshonk
pww\ohiodot-pw.bentley.com\ohiodot-pw-02\Documents\01.Active Projects\District 05\Licking\25436\400.Engineering\Structures\SFN_2301563_Sheet\25436_SFJ_2301563_SIN001.dgn

BRIDGE NOTES

SFN	
DESIGN AGENCY	
DESIGNER	CHECKER
TDF	TAG
REVIEWER	
CPS 05/01/22	
PROJECT ID	
25436	
SUBSET	TOTAL
1	19
SHEET	
TOTAL	
26	44

SHEET NUM.											PART.	ITEM	ITEM	GRAND	UNIT	DESCRIPTION	SEE SHEET NO.
											02/IMS/BR		EXT	TOTAL			
STRUCTURE REPAIR (BRIDGE NO. FAI-70-0085L, SFN: 2301563)																	
											761	512	10301	761	SY	SEALING CONCRETE BRIDGE DECKS WITH HMWM RESIN, AS PER PLAN	2/19
											20	SPECIAL	51911600	20	SF	PATCHING CONCRETE STRUCTURE: CLASS QC2 CONCRETE WITH ACCELERATING ADMIXTURE	2/19
											0.05	646	10010	0.05	MILE	EDGE LINE, 6"	
											0.05	646	10110	0.05	MILE	LANE LINE, 6"	
STRUCTURE REPAIR (BRIDGE NO. FAI-70-0085R, SFN: 2301598)																	
											693	512	10301	693	SY	SEALING CONCRETE BRIDGE DECKS WITH HMWM RESIN, AS PER PLAN	2/19
											72	SPECIAL	51911600	72	SF	PATCHING CONCRETE STRUCTURE: CLASS QC2 CONCRETE WITH ACCELERATING ADMIXTURE	2/19
											0.05	646	10010	0.05	MILE	EDGE LINE, 6"	
											0.05	646	10110	0.05	MILE	LANE LINE, 6"	
STRUCTURE REPAIR (BRIDGE NO. FAI-70-0118L, SFN: 2301628)																	
											793	512	10301	793	SY	SEALING CONCRETE BRIDGE DECKS WITH HMWM RESIN, AS PER PLAN	2/19
											20	SPECIAL	51911600	20	SF	PATCHING CONCRETE STRUCTURE: CLASS QC2 CONCRETE WITH ACCELERATING ADMIXTURE	2/19
											0.07	646	10010	0.07	MILE	EDGE LINE, 6"	
											0.03	646	10110	0.03	MILE	LANE LINE, 6"	
											27	844	10001	27	SF	CONCRETE PATCHING WITH GALVANIC ANODE PROTECTION, AS PER PLAN	2/19
STRUCTURE REPAIR (BRIDGE NO. FAI-70-0118R, SFN: 2301652)																	
											6	202	98400	6	SF	REMOVAL MISC.: HAND-CHIPPING LOOSE AND DISINTEGRATED CONCRETE	2/19
											1,378	512	10301	1,378	SY	SEALING CONCRETE BRIDGE DECKS WITH HMWM RESIN, AS PER PLAN	2/19
											20	SPECIAL	51911600	20	SF	PATCHING CONCRETE STRUCTURE: CLASS QC2 CONCRETE WITH ACCELERATING ADMIXTURE	2/19
											0.07	646	10010	0.07	MILE	EDGE LINE, 6"	
											0.1	646	10110	0.1	MILE	LANE LINE, 6"	
											75	646	10310	75	FT	CHANNELIZING LINE, 12"	
											12	844	10001	12	SF	CONCRETE PATCHING WITH GALVANIC ANODE PROTECTION, AS PER PLAN	2/19
STRUCTURE REPAIR (BRIDGE NO. LIC-70-0072L, SFN: 4502884)																	
											751	512	10301	751	SY	SEALING CONCRETE BRIDGE DECKS WITH HMWM RESIN, AS PER PLAN	2/19
											61	SPECIAL	51911600	61	SF	PATCHING CONCRETE STRUCTURE: CLASS QC2 CONCRETE WITH ACCELERATING ADMIXTURE	2/19
											0.06	646	10010	0.06	MILE	EDGE LINE, 6"	
											0.03	646	10110	0.03	MILE	LANE LINE, 6"	
											3	844	10001	3	SF	CONCRETE PATCHING WITH GALVANIC ANODE PROTECTION, AS PER PLAN	2/19
STRUCTURE REPAIR (BRIDGE NO. LIC-70-0074R, SFN: 4502914)																	
											2	202	11301	2	CY	PORTIONS OF STRUCTURE REMOVED, AS PER PLAN (SUBSTRUCTURE)	3/19
											2	511	53010	2	CY	CLASS QC1 CONCRETE, MISC.: ACCELERATING ADMIXTURE	3/19
											708	512	10301	708	SY	SEALING CONCRETE BRIDGE DECKS WITH HMWM RESIN, AS PER PLAN	2/19
											20	512	10600	20	FT	CONCRETE REPAIR BY EPOXY INJECTION	3/19
											15	514	27700	15	SF	FIELD PAINTING, MISC.: MAIN MEMBERS	2/19
											LS	516	47001	LS		JACKING AND TEMPORARY SUPPORT OF SUPERSTRUCTURE, AS PER PLAN	3/19
											20	SPECIAL	51911600	20	SF	PATCHING CONCRETE STRUCTURE: CLASS QC2 CONCRETE WITH ACCELERATING ADMIXTURE	2/19
											0.06	646	10010	0.06	MILE	EDGE LINE, 6"	
											0.03	646	10110	0.03	MILE	LANE LINE, 6"	
											8	849	10600	8	HOUR	REPAIRING DAMAGED MEMBERS BY GRINDING	18/19


BRIDGE SUMMARY	
SFN	3/19
DESIGN AGENCY	3/19
DESIGNER TDF	CHECKER TAG
REVIEWER CPS 05/01/22	
PROJECT ID 25436	
SUBSET 3	TOTAL 19
SHEET 28	TOTAL 44

SHEET NUM.											PART.	ITEM	ITEM	GRAND	UNIT	DESCRIPTION	SEE SHEET NO.
											02/IMS/BR		EXT	TOTAL			
											1,570	512	10301	1,570	SY	STRUCTURE REPAIR (BRIDGE NO. LIC-158-0098, SFN: 4505352) SEALING CONCRETE BRIDGE DECKS WITH HMWM RESIN AS PER PLAN	2/19
											0.08	646	10010	0.08	MILE	EDGE LINE, 6"	
											0.04	646	10200	0.04	MILE	CENTER LINE	
											146	646	10300	146	FT	CHANNELIZING LINE, 8"	
											1	646	20300	1	EACH	LANE ARROW	

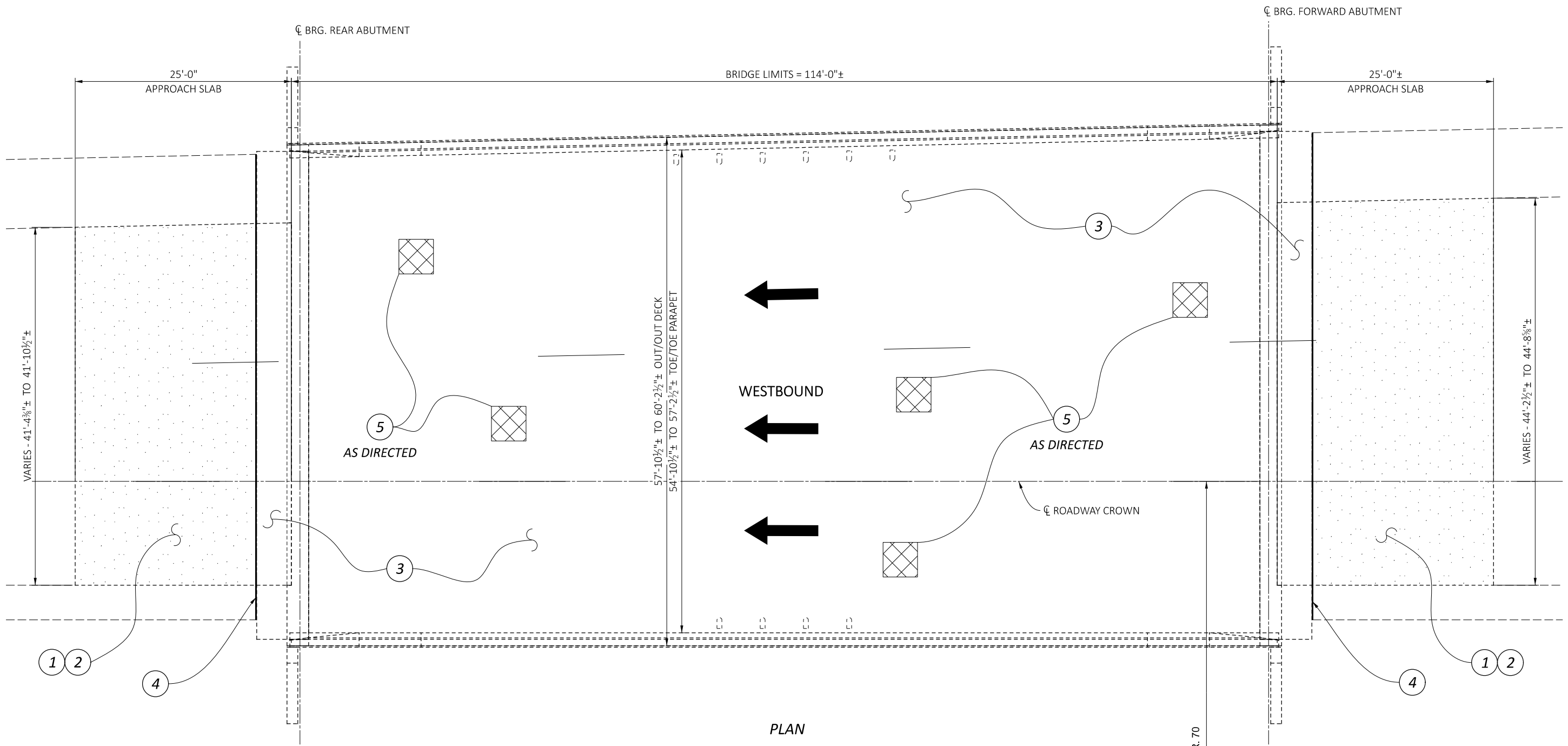
BRIDGE SUMMARY

SFN

DESIGN AGENCY



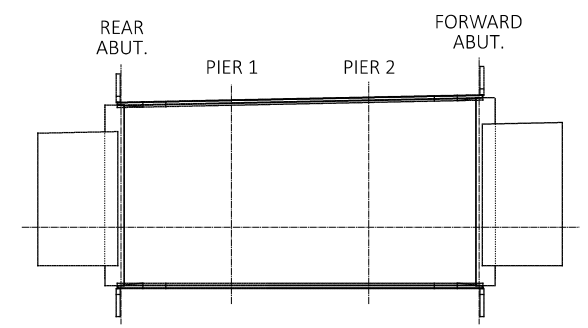
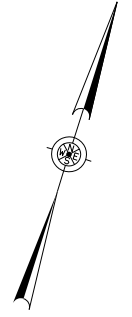
DESIGNER	CHECKER
TDF	TAG
REVIEWER	
CPS 05/01/22	
PROJECT ID	
25436	
SUBSET	TOTAL
4	19
SHEET	TOTAL
29	44



PLAN

LEGEND

- ① — [Pattern] ITEM 254 - PAVEMENT PLANING (QUANTITY CARRIED TO ROADWAY)
- ② — [Pattern] ITEM 407 - NON-TRACKING TACK COAT & ITEM 442 - ASPHALT CONCRETE SURFACE COURSE, 12.5MM, TYPE A (447) (QUANTITY CARRIED TO ROADWAY)
- ③ — [Pattern] ITEM 512 - SEALING CONCRETE BRIDGE DECKS WITH HMWM RESIN, AS PER PLAN
- ④ — [Pattern] ITEM 516 - 2" DEEP JOINT SEALER, AS PER PLAN (QUANTITY CARRIED TO ROADWAY)
- ⑤ — [Pattern] ITEM 519 - SPECIAL - PATCHING CONCRETE STRUCTURE: CLASS QC2 CONCRETE WITH ACCELERATING ADMIXTURE (4" MINIMUM DEPTH)



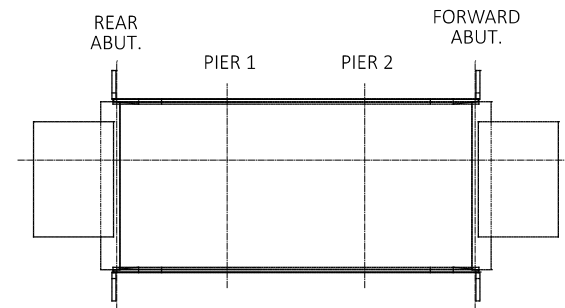
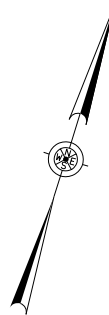
SUBSTRUCTURE DESIGNATION

GENERAL PLAN
BRIDGE NO. FAI-70-0085L LEFT
OVER BLACKICK CREEK AND BIKE PATH

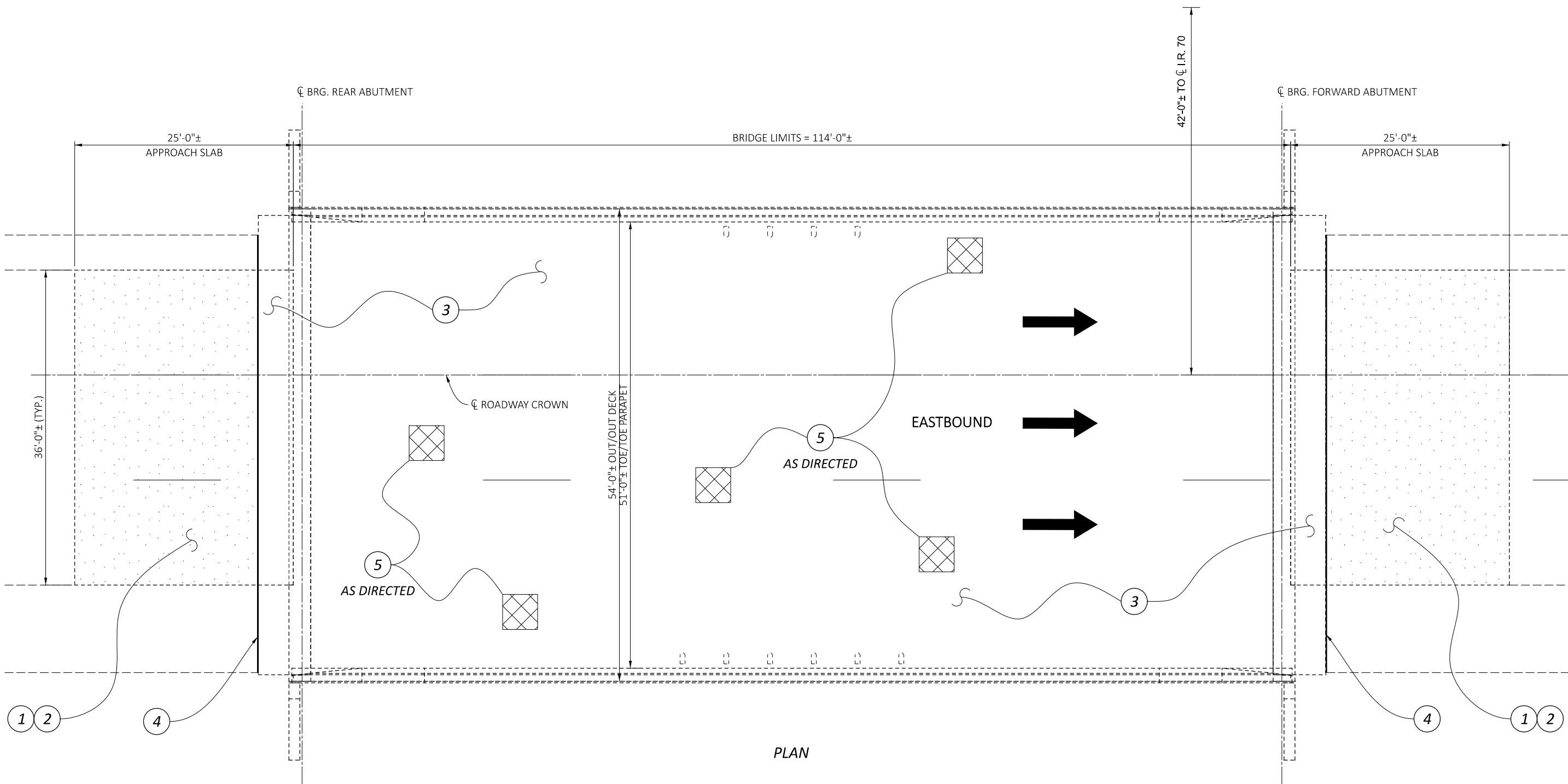
SFN 2301563	
DESIGN AGENCY	
DESIGNER TDF	CHECKER TAG
REVIEWER CPS 05/01/22	
PROJECT ID 25436	
SUBSET 5	TOTAL 19
SHEET 30	TOTAL 44

LEGEND

- ① — [Pattern] ITEM 254 - PAVEMENT PLANING (QUANTITY CARRIED TO ROADWAY)
- ② — [Pattern] ITEM 407 - NON-TRACKING TACK COAT & ITEM 442 - ASPHALT CONCRETE SURFACE COURSE, 12.5MM, TYPE A (447) (QUANTITY CARRIED TO ROADWAY)
- ③ — [Pattern] ITEM 512 - SEALING CONCRETE BRIDGE DECKS WITH HMWM RESIN, AS PER PLAN
- ④ — [Pattern] ITEM 516 - 2" DEEP JOINT SEALER, AS PER PLAN (QUANTITY CARRIED TO ROADWAY)
- ⑤ — [Pattern] ITEM 519 - SPECIAL - PATCHING CONCRETE STRUCTURE: CLASS QC2 CONCRETE WITH ACCELERATING ADMIXTURE (4" MINIMUM DEPTH)



SUBSTRUCTURE DESIGNATION



PLAN

FAI/LIC-70-0.00/0.00

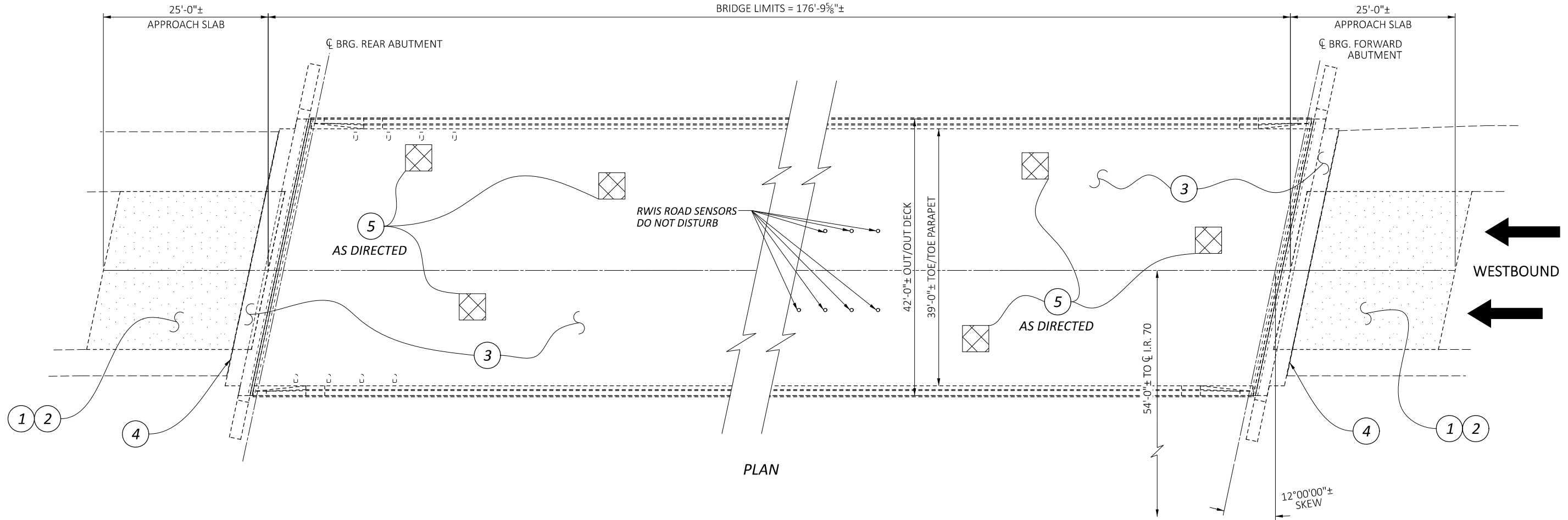
MODEL: Bridge Maintenance PAPER SIZE: 17x11 (in.) DATE: 9/8/2022 TIME: 9:05:52 AM USER: cshonk
 pw:\ohiodot-pw.bentley.com\ohiodot-pw-02\Documents\01.Active Projects\District 05\Licking\25436\400-Engineering\Structures\SFN_2301598\Sheets\25436_SF_N_2301598_SG001.dgn

GENERAL PLAN
 BRIDGE NO. FAI-70-0085R
 OVER BLACKLICK CREEK AND BIKE PATH

SFN
 2301598
 DESIGN AGENCY



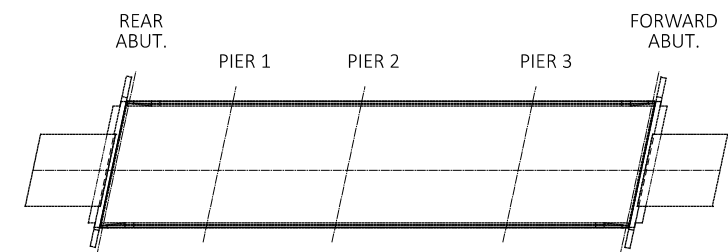
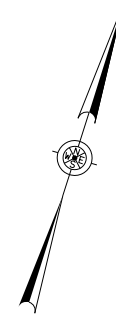
DESIGNER	CHECKER
TDF	TAG
REVIEWER	
CPS 05/01/22	
PROJECT ID	
25436	
SUBSET	TOTAL
6	19
SHEET	TOTAL
31	44



PLAN

LEGEND

- ① — [Pattern] ITEM 254 - PAVEMENT PLANING (QUANTITY CARRIED TO ROADWAY)
- ② — [Pattern] ITEM 407 - NON-TRACKING TACK COAT & ITEM 442 - ASPHALT CONCRETE SURFACE COURSE, 12.5MM, TYPE A (447) (QUANTITY CARRIED TO ROADWAY)
- ③ — [Pattern] ITEM 512 - SEALING CONCRETE BRIDGE DECKS WITH HMWM RESIN **AS PER PLAN**
- ④ — [Pattern] ITEM 516 - 2" DEEP JOINT SEALER, AS PER PLAN (QUANTITY CARRIED TO ROADWAY)
- ⑤ — [Pattern] ITEM 519 - SPECIAL - PATCHING CONCRETE STRUCTURE: CLASS QC2 CONCRETE WITH ACCELERATING ADMIXTURE (4" MINIMUM DEPTH)



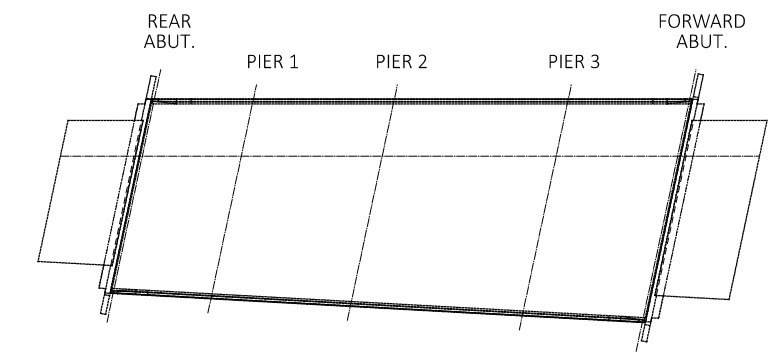
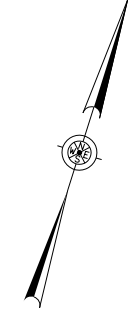
SUBSTRUCTURE DESIGNATION

GENERAL PLAN
BRIDGE NO. FAI-70-0118L
OVER STATE ROUTE 256

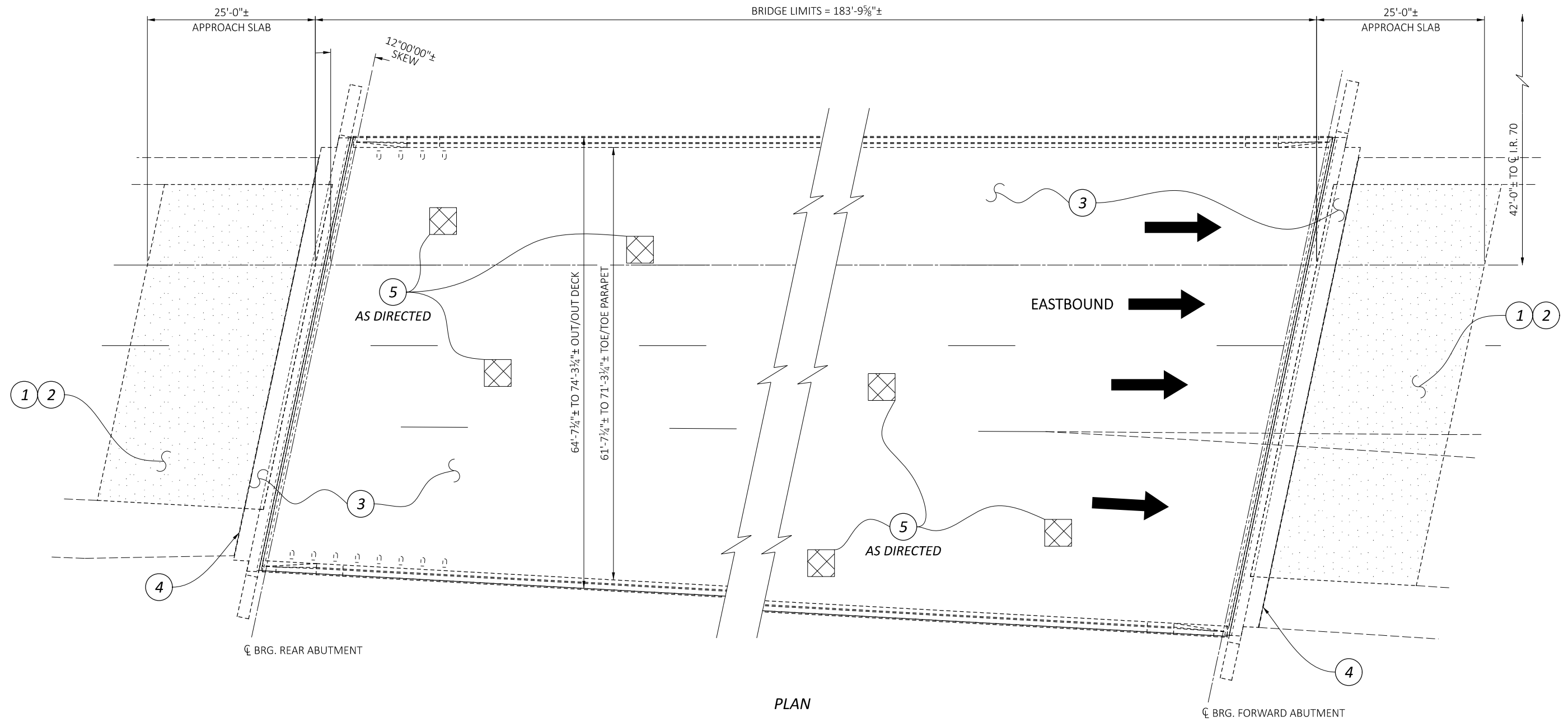
SFN		2301628
DESIGN AGENCY		
DESIGNER	CHECKER	REVIEWER
TDF	TAG	
CPS 05/01/22		
PROJECT ID		
25436		
SUBSET	TOTAL	
7	19	
SHEET	TOTAL	
32	44	

LEGEND

- ① — [Pattern] ITEM 254 - PAVEMENT PLANING (QUANTITY CARRIED TO ROADWAY)
- ② — [Pattern] ITEM 407 - NON-TRACKING TACK COAT & ITEM 442 - ASPHALT CONCRETE SURFACE COURSE, 12.5MM, TYPE A (447) (QUANTITY CARRIED TO ROADWAY)
- ③ — [Pattern] ITEM 512 - SEALING CONCRETE BRIDGE DECKS WITH HMWM RESIN, AS PER PLAN
- ④ — [Pattern] ITEM 516 - 2" DEEP JOINT SEALER, AS PER PLAN (QUANTITY CARRIED TO ROADWAY)
- ⑤ — [Pattern] ITEM 519 - SPECIAL - PATCHING CONCRETE STRUCTURE: CLASS QC2 CONCRETE WITH ACCELERATING ADMIXTURE (4" MINIMUM DEPTH)



SUBSTRUCTURE DESIGNATION



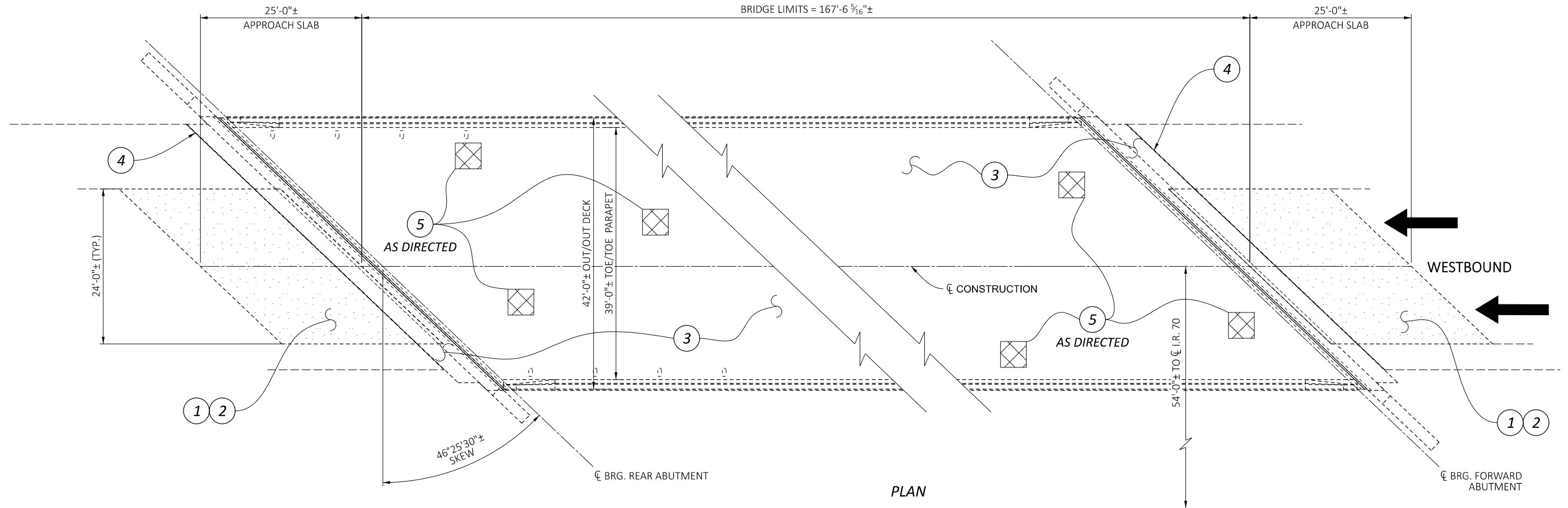
PLAN

FAI/LIC-70-0.00/0.00

MODEL: Bridge Maintenance PAPER SIZE: 17x11 (in.) DATE: 9/8/2022 TIME: 9:06:21 AM USER: cshonk
 pw:\ohiodot-pw.bentley.com\ohiodot-pw-02\Documents\01.Active Projects\District 05\Licking\25436\400-Engineering\Structures\SFN_2301652\Sheets\25436_SF_2301652_SG001.dgn

GENERAL PLAN
 BRIDGE NO. FAI-70-0118R
 OVER STATE ROUTE 256

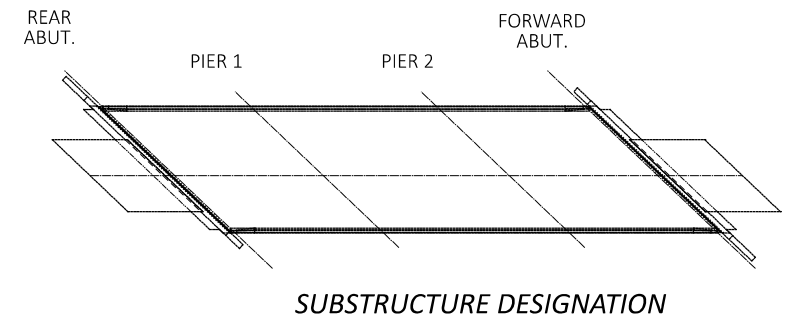
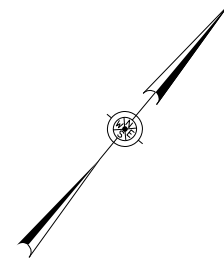
SFN	
2301652	
DESIGN AGENCY	
DESIGNER	CHECKER
TDF	TAG
REVIEWER	
CPS 05/01/22	
PROJECT ID	
25436	
SUBSET	TOTAL
9	19
SHEET	TOTAL
34	44



PLAN

LEGEND

- ① — [Pattern] ITEM 254 - PAVEMENT PLANING (QUANTITY CARRIED TO ROADWAY)
- ② — [Pattern] ITEM 407 - NON-TRACKING TACK COAT & ITEM 442 - ASPHALT CONCRETE SURFACE COURSE, 12.5MM, TYPE A (447) (QUANTITY CARRIED TO ROADWAY)
- ③ — [Pattern] ITEM 512 - SEALING CONCRETE BRIDGE DECKS WITH HMWM RESIN, **AS PER PLAN**
- ④ — [Pattern] ITEM 516 - 2" DEEP JOINT SEALER, AS PER PLAN (QUANTITY CARRIED TO ROADWAY)
- ⑤ — [Pattern] ITEM 519 - SPECIAL - PATCHING CONCRETE STRUCTURE: CLASS QC2 CONCRETE WITH ACCELERATING ADMIXTURE (4" MINIMUM DEPTH)



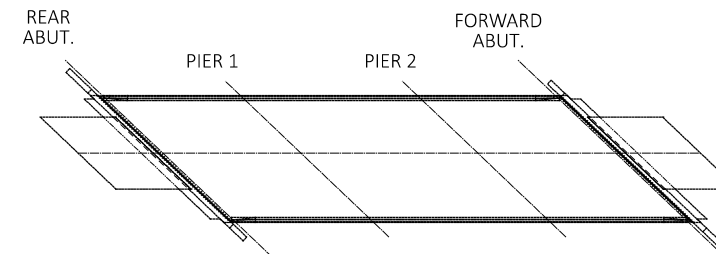
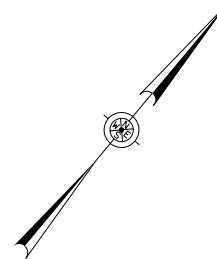
SUBSTRUCTURE DESIGNATION

GENERAL PLAN
BRIDGE NO. LIC-70-0074L
OVER TOWNSHIP ROAD 36

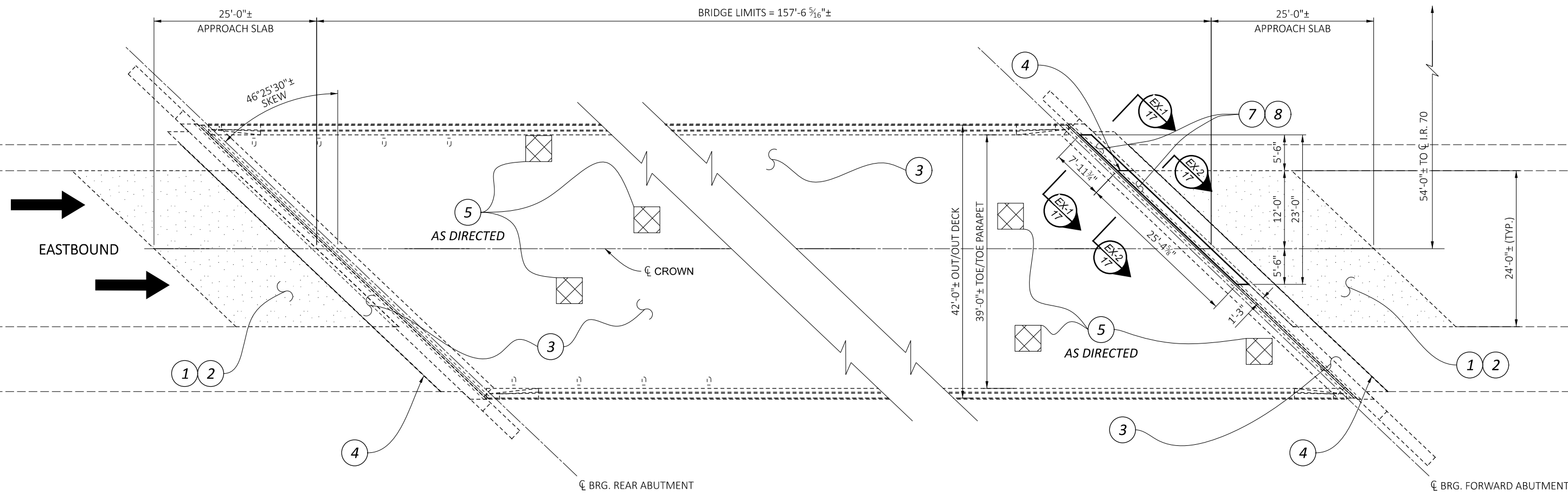
SFN		4502884	
DESIGN AGENCY			
DESIGNER	CHECKER	REVIEWER	
TDF	TAG	CPS 05/01/22	
PROJECT ID			
25436			
SUBSET	TOTAL	TOTAL	
12	19	37	
SHEET	TOTAL	TOTAL	
37	44	44	

LEGEND

- ① — [Pattern] ITEM 254 - PAVEMENT PLANING (QUANTITY CARRIED TO ROADWAY)
- ② — [Pattern] ITEM 407 - NON-TRACKING TACK COAT & ITEM 442 - ASPHALT CONCRETE SURFACE COURSE, 12.5MM, TYPE A (447) (QUANTITY CARRIED TO ROADWAY)
- ③ — [Pattern] ITEM 512 - SEALING CONCRETE BRIDGE DECKS WITH HMWM RESIN, AS PER PLAN
- ④ — [Pattern] ITEM 516 - 2" DEEP JOINT SEALER, AS PER PLAN (QUANTITY CARRIED TO ROADWAY)
- ⑤ — [Pattern] ITEM 519 - SPECIAL - PATCHING CONCRETE STRUCTURE: CLASS QC2 CONCRETE WITH ACCELERATING ADMIXTURE (4" MINIMUM DEPTH)
- ⑦ — [Pattern] ITEM 202 - PORTION OF STRUCTURE REMOVED, AS PER PLAN (SUBSTRUCTURE)
- ⑧ — [Pattern] ITEM 511 - CLASS QC1 CONCRETE, MISC.: ACCELERATING ADMIXTURE



SUBSTRUCTURE DESIGNATION



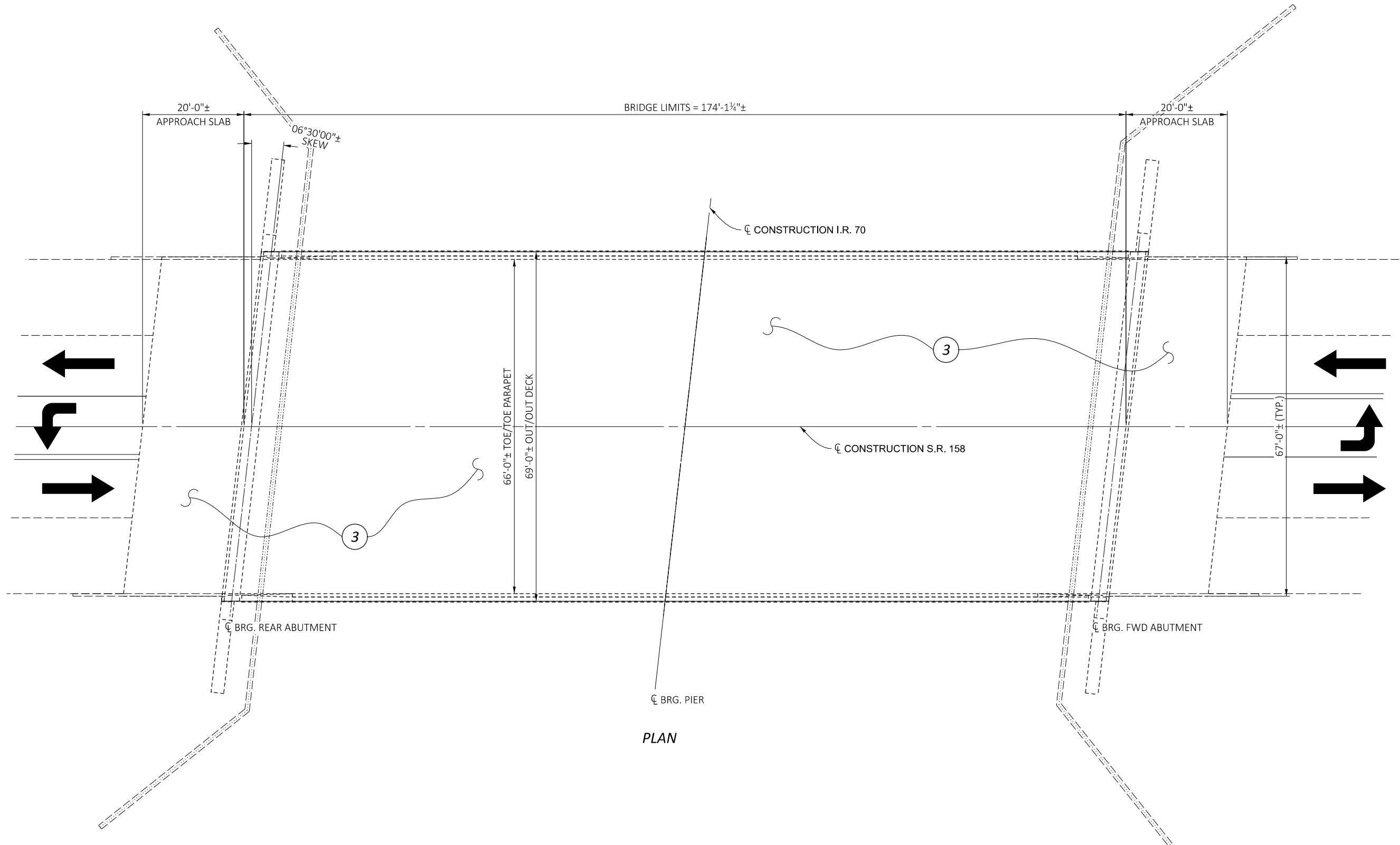
PLAN

FAI/LIC-70-0.00/0.00

MODEL: Bridge Maintenance PAPER SIZE: 17x11 (in.) DATE: 9/8/2022 TIME: 9:07:12 AM USER: cshonk
 pw:\ohiodot-pw.bentley.com\ohiodot-pw-02\Documents\01.Active Projects\District 05\Licking\25436\400-Engineering\Structures\SFN_4502914_Sheets\25436_SF_N_4502914_SG001.dgn

GENERAL PLAN
 BRIDGE NO. LIC-70-0074R
 OVER TOWNSHIP ROAD 36

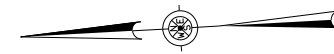
SFN 4502914	
DESIGN AGENCY	
DESIGNER	CHECKER
TDF	TAG
REVIEWER	
CPS 05/01/22	
PROJECT ID	
25436	
SUBSET	TOTAL
16	19
SHEET	TOTAL
41	44



PLAN

LEGEND

- 3 — [] ITEM 512 - SEALING CONCRETE BRIDGE DECKS WITH HMWM RESIN, AS PER PLAN



GENERAL PLAN
 BRIDGE NO. LIC-158-0097
 OVER INTERSTATE ROUTE 70

SFN
 4505352
 DESIGN AGENCY



DESIGNER TDF
 CHECKER TAG

REVIEWER

CPS 05/01/22

PROJECT ID
 25436

SUBSET	TOTAL
19	19

SHEET	TOTAL
44	44