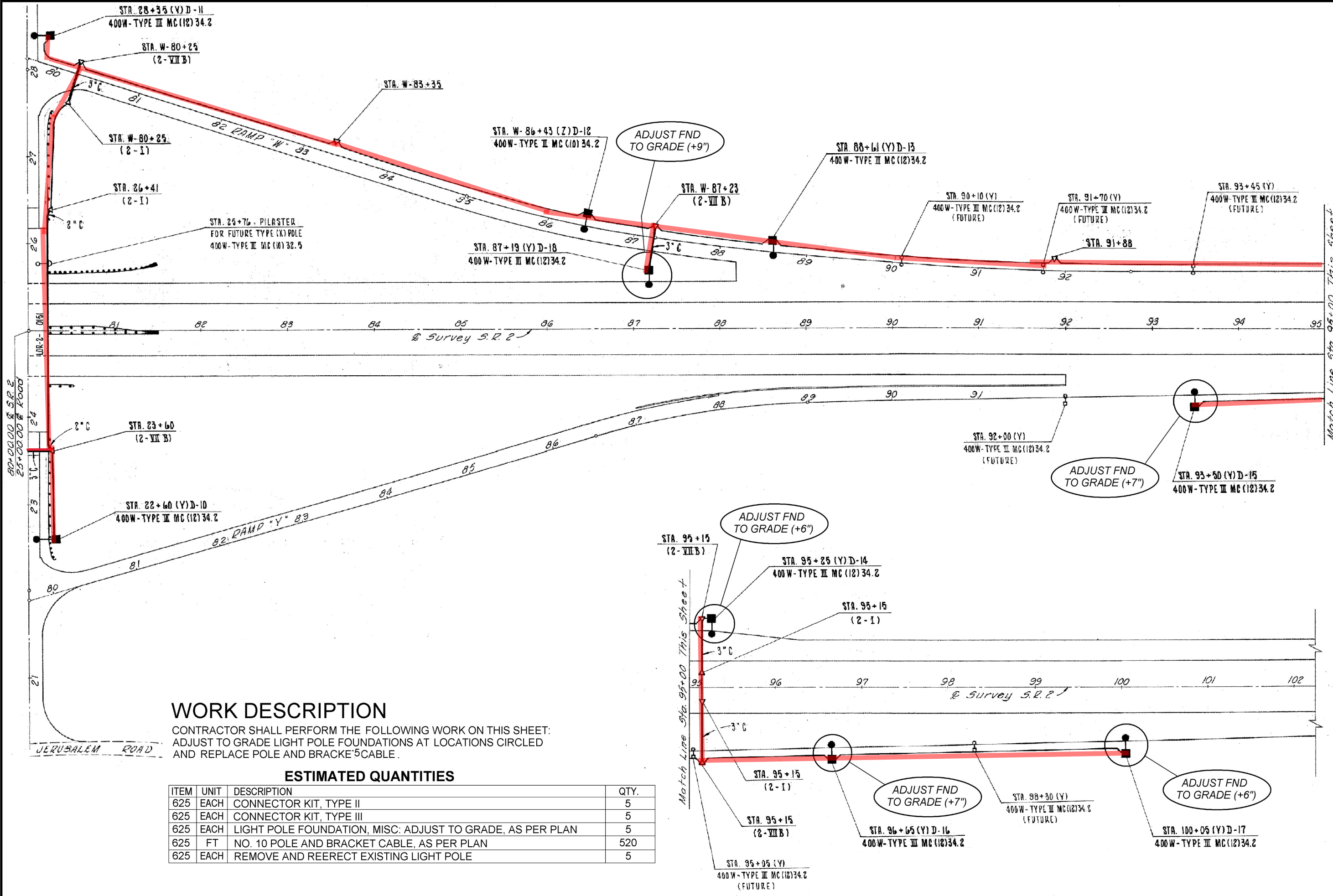


LOR-2 & VERMILION ROAD, EAST SIDE

D03-LG-FY2010

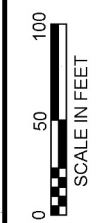
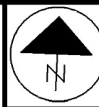


### WORK DESCRIPTION

CONTRACTOR SHALL PERFORM THE FOLLOWING WORK ON THIS SHEET:  
 ADJUST TO GRADE LIGHT POLE FOUNDATIONS AT LOCATIONS CIRCLED  
 AND REPLACE POLE AND BRACKET CABLE.

### ESTIMATED QUANTITIES

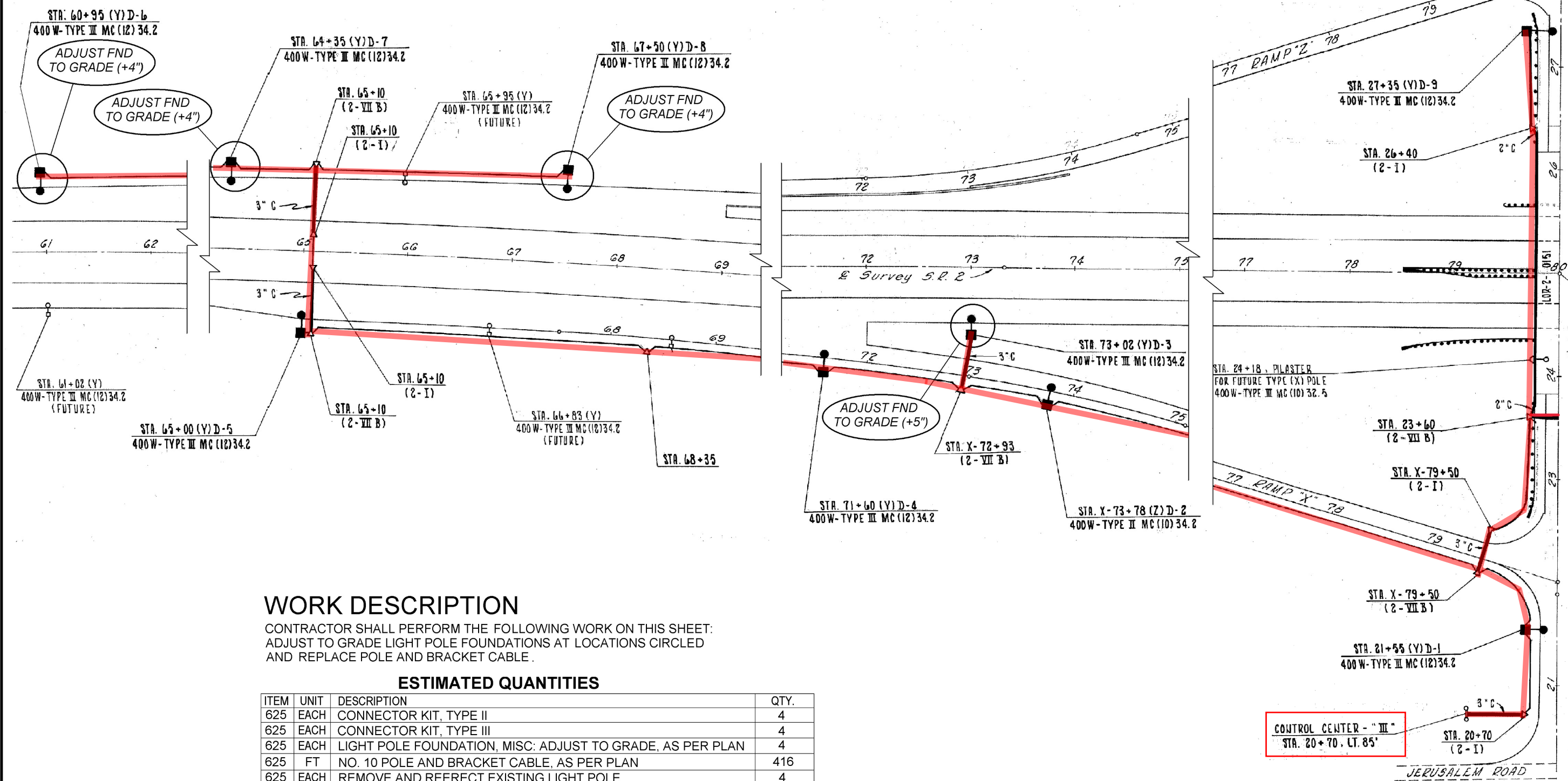
ITEM	UNIT	DESCRIPTION	QTY.
625	EACH	CONNECTOR KIT, TYPE II	5
625	EACH	CONNECTOR KIT, TYPE III	5
625	EACH	LIGHT POLE FOUNDATION, MISC: ADJUST TO GRADE, AS PER PLAN	5
625	FT	NO. 10 POLE AND BRACKET CABLE, AS PER PLAN	520
625	EACH	REMOVE AND REERECT EXISTING LIGHT POLE	5



LOR-2 & VERMILION ROAD WEST SIDE

D03-LG-FY2010

12  
23



**WORK DESCRIPTION**

CONTRACTOR SHALL PERFORM THE FOLLOWING WORK ON THIS SHEET:  
 ADJUST TO GRADE LIGHT POLE FOUNDATIONS AT LOCATIONS CIRCLED  
 AND REPLACE POLE AND BRACKET CABLE.

**ESTIMATED QUANTITIES**

ITEM	UNIT	DESCRIPTION	QTY.
625	EACH	CONNECTOR KIT, TYPE II	4
625	EACH	CONNECTOR KIT, TYPE III	4
625	EACH	LIGHT POLE FOUNDATION, MISC: ADJUST TO GRADE, AS PER PLAN	4
625	FT	NO. 10 POLE AND BRACKET CABLE, AS PER PLAN	416
625	EACH	REMOVE AND REERECT EXISTING LIGHT POLE	4