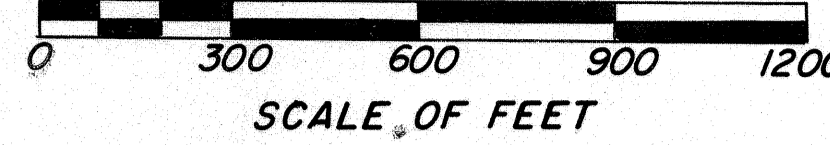


**CENTER LINE SURVEY PLAT
LOR-611-(0.05-1.97)**

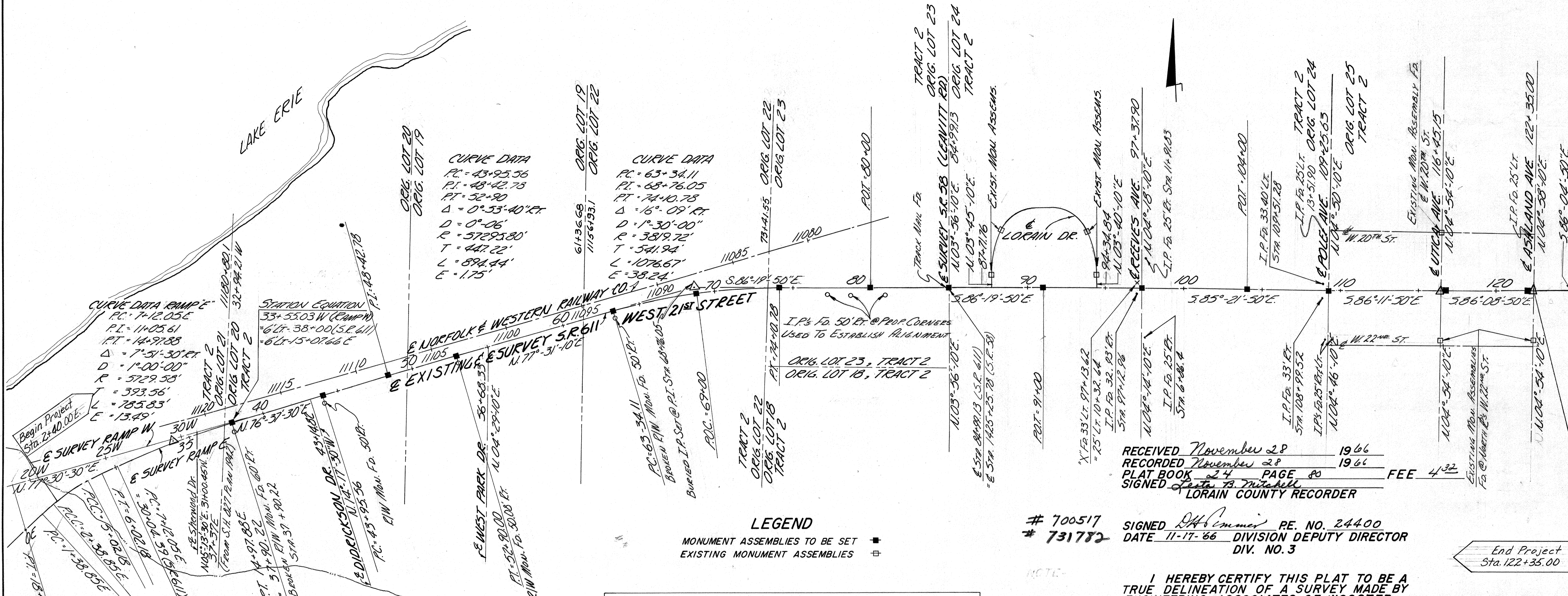
BLACK RIVER TOWNSHIP, CITY OF LORAIN, LORAIN COUNTY, OHIO



T.7N., R.18W., ORIG. LOTS 19, 20, 21, 22, 23, 24, & 25, TRACT 2

FED. RD. DIVISION	STATE	PROJECT
2	OHIO	

SOLD AS LOR-611-(0.05-1.97)
CENTER LINE SURVEY PLAT
LOR-611DA/611-0.37/0.00



RECEIVED November 28 1966
 RECORDED November 28 1966
 PLAT BOOK 24 PAGE 80 FEE 4.32
 SIGNED *Leta B. Mitchell*
 LORAIN COUNTY RECORDER

700517 SIGNED *D.H. Cramer* RE. NO. 24400
 # 731782 DATE 11-17-66 DIVISION DEPUTY DIRECTOR
 DIV. NO. 3

End Project
Sta. 122+35.00

LEGEND

MONUMENT ASSEMBLIES TO BE SET ■
 EXISTING MONUMENT ASSEMBLIES □

QUAN	STATION	LOCATION	REMARKS
1	37+90.22	S.R. 611	E SURVEY PT
1	43+95.56	E SURVEY	P.C.
1	48+42.78	1.75' LT E	P.I.
1	52+90.00	E SURVEY	P.T.
1	63+34.11	"	P.C.
1	68+00	"	P.O.C.
1	74+10.78	"	P.T.
1	80+00	"	P.O.T.
1	84+99.13	"	P.O.T. & S.R. 58
1	91+00	"	P.O.T.
1	97+37.90	"	P.I. E & REEVES
1	104+00	"	P.O.T.
1	109+25.63	"	P.I. E & POLE
1	116+70.15	"	P.O.T.
1	122+10	"	P.O.T.
15	TOTAL		

NOTE: I HEREBY CERTIFY THIS PLAT TO BE A TRUE DELINEATION OF A SURVEY MADE BY ENGINEERING ASSOCIATES OF WOOSTER, OHIO.

DATE Oct. 31st 1966 BY Ray W. Hasbarger
 REGISTERED SURVEYOR NO. 4153

RECEIVED Aug. 14 1968
 RERECORDED Aug. 14 1968
 PLAT BOOK 25 PAGE 50 FEE 4.32
 SIGNED Leta B. Mitchell
 LORAIN COUNTY RECORDER

PREPARED BY
**ENGINEERING ASSOCIATES
 CONSULTING ENGINEERS**
 WOOSTER, OHIO

NOTE: MONUMENT ASSEMBLY CHANGED FROM STA. 116+75 TO STA. 116+70.15. 7-29-68 PAB.

NOTE- SEE VOLUME 18, PAGE 35 OF LORAIN COUNTY PLAT RECORDS FOR CENTERLINE LOCATION PLAN OF LOR-6-(6.41-7.94)

NOTE- STANDARD MONUMENT ASSEMBLIES ARE TO BE PLACED DURING CONSTRUCTION IN THE EXISTING PAVEMENT AFTER THE LEVELING COURSE AND PRIOR TO THE SURFACE COURSES.

ALL MONUMENTS ARE TO BE PLACED UNDER THE DIRECTION OF THE PROJECT ENGINEER AND ANY ALTERATIONS SHALL BE NOTED AND THE RIGHT OF WAY DEPARTMENT OF DIVISION 3 SHALL BE NOTIFIED OF THE NEW LOCATION.

FOR DETAIL OF MONUMENT ASSEMBLIES SEE STANDARD DRAWING MC-1