

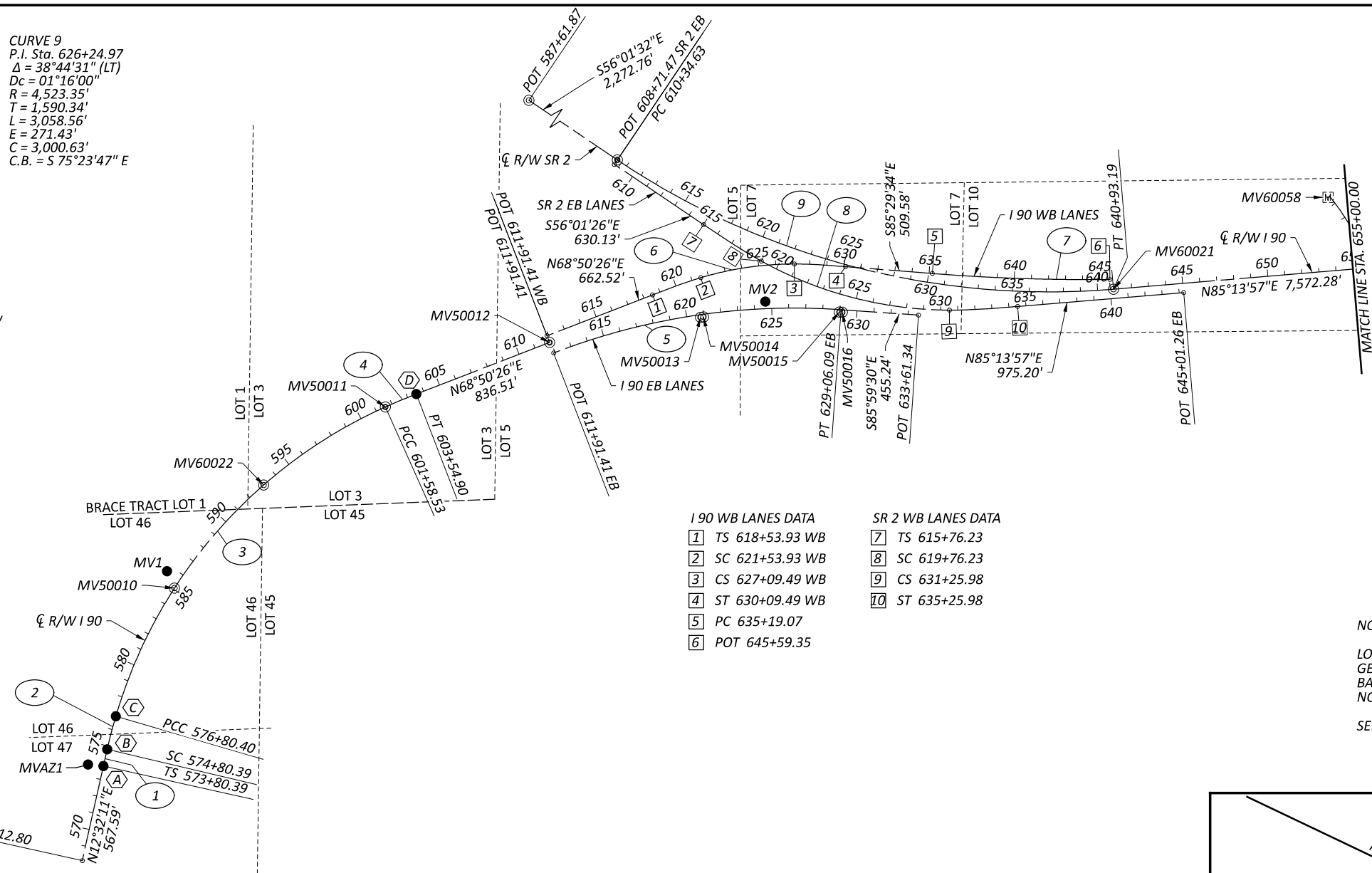
MODEL: 107714\_R0001 [Sheet] PAPER SIZE: 17x11 (in.) DATE: 8/28/2022 TIME: 9:23:40 AM USER: SEA  
M:22016 (ODOT - LOR-90-10.76 Surveying Services (PID 107714, Agreement No. 36745))\107714\4400-Engineering\FW\Sheets\107714\_R0000.dgn

- CURVE 1**  
P.I. Sta. 574+47.06  
Ls = 100.00'  
fs = 00°45'00"  
LT = 66.67'  
ST = 33.33'  
x = 100.00'  
y = 0.44'  
k = 50.00'  
p = 0.11'
- CURVE 2**  
P.I. Sta. 575+80.42  
Δ = 03°00'00" (RT)  
Dc = 01°30'00"  
R = 3,819.99'  
T = 100.03'  
L = 200.01'  
E = 1.31'  
C = 199.99'  
C.B. = N 14°47'11" E
- CURVE 3**  
P.I. Sta. 590+02.99  
Δ = 49°33'45" (RT)  
Dc = 02°00'00"  
R = 2,864.79'  
T = 1,322.58'  
L = 2,478.13'  
E = 290.56'  
C = 2,401.59'  
C.B. = N 41°04'03" E
- CURVE 4**  
P.I. Sta. 602+56.74  
Δ = 02°59'29" (RT)  
Dc = 01°31'24"  
R = 3,760.92'  
T = 98.20'  
L = 196.36'  
E = 1.28'  
C = 196.34'  
C.B. = N 67°20'41" E
- CURVE 5**  
P.I. Sta. 620+67.11  
Δ = 25°08'55" (RT)  
Dc = 01°28'00"  
R = 3,906.53'  
T = 871.38'  
L = 1,714.68'  
E = 96.00'  
C = 1,700.95'  
C.B. = N 81°26'02" E
- CURVE 6**  
P.I. Sta. 624+43.75  
Δ = 25°40'00" (RT)  
Dc = 03°00'00"  
R = 1,909.86'  
Ls = 300.00'  
fs = 4°30'00"  
LT = 200.06'  
ST = 100.06'  
x = 299.81'  
y = 7.85'  
k = 149.97'  
p = 1.96'
- CURVE 7**  
P.I. Sta. 640+43.89  
Δ = 05°12'05" (LT)  
Dc = 00°30'00"  
R = 11,459.16'  
T = 520.50'  
L = 1,040.28'  
E = 11.81'  
C = 1,039.92'  
C.B. = S 88°05'36" E
- CURVE 8**  
P.I. Sta. 625+08.39  
Δ = 38°44'37" (LT)  
Dc = 02°30'00"  
R = 2,291.83'  
Ls = 400.00'  
fs = 05°00'00"  
LT = 266.77'  
ST = 133.43'  
x = 399.70'  
y = 11.63'  
k = 199.95'  
p = 2.91'
- CURVE 9**  
P.I. Sta. 626+24.97  
Δ = 38°44'31" (LT)  
Dc = 01°16'00"  
R = 4,523.35'  
Ls = 1,590.34'  
fs = 4°30'00"  
LT = 200.06'  
ST = 100.06'  
x = 299.81'  
y = 7.85'  
k = 149.97'  
p = 1.96'

- CURVE L**  
P.I. = STA. 69+43.51  
Δ = 38°23'57" LT  
Dc = 04°30'00"  
R = 1,273.24'  
T = 443.38'  
L = 853.31'  
E = 74.99'  
C = 837.44'  
CB = N 20°25'56" W

- CURVE 10**  
P.I. Sta. 734+67.57  
Δ = 59°49'51" (LT)  
Dc = 01°59'47"  
R = 2,870.00'  
Ls = 300.00'  
fs = 02°59'40"  
LT = 200.03'  
ST = 100.03'  
x = 299.92'  
y = 5.23'  
k = 149.99'  
p = 1.31'

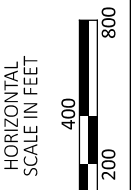
- Δc = 53°50'31" (LT)  
Lc = 2,696.99'  
Ts = 1,802.09'  
E = 442.68'  
C = 2,598.84'  
C1 = C2 = 299.96'  
C.B.1 = N 84°14'04" E  
C.B.2 = N 55°19'02" E  
C.B.2 = S 26°23'59" W



190 WB LANES DATA		SR 2 WB LANES DATA	
1	TS 618+53.93 WB	7	TS 615+76.23
2	SC 621+53.93 WB	8	SC 619+76.23
3	CS 627+09.49 WB	9	CS 631+25.98
4	ST 630+09.49 WB	10	ST 635+25.98
5	PC 635+19.07		
6	POT 645+59.35		

# LOR-90-10.76

LORAIN COUNTY  
CONNECTICUT WESTERN RESERVE  
ELYRIA TOWNSHIP, T-6-N, R-17-W  
BRACE TRACT LOTS 1, 3, 5, 7, 10, 46, 47



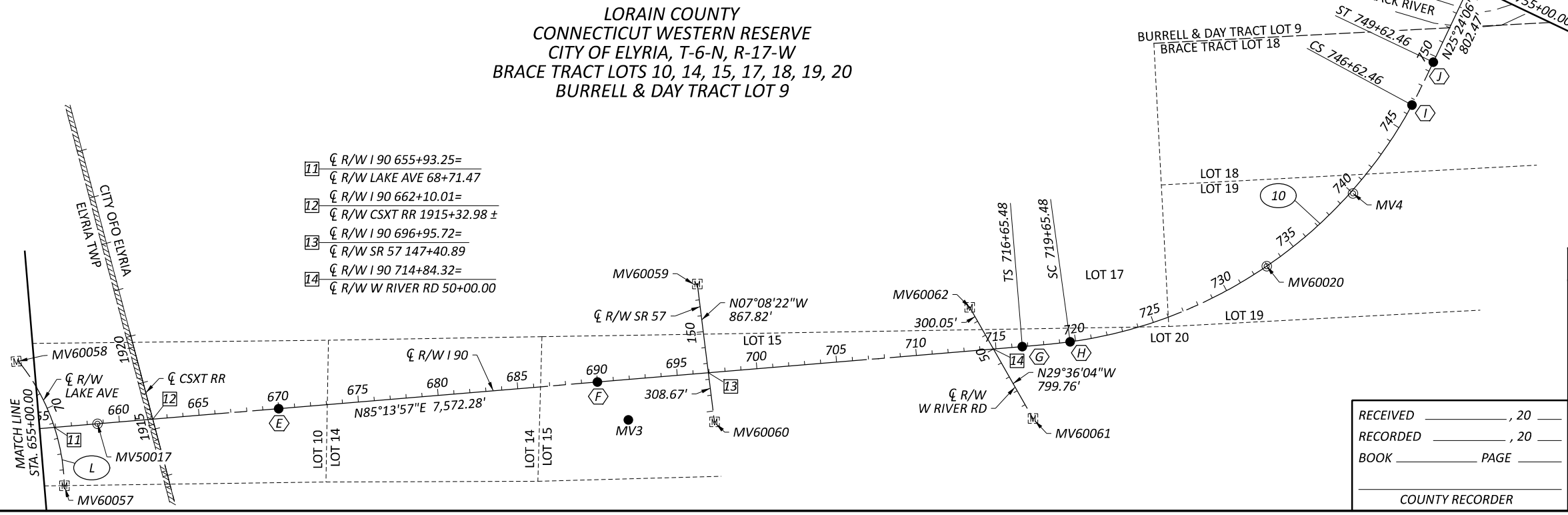
- LEGEND**
- EXISTING R/W MONUMENT BOX
  - PROPOSED R/W MONUMENT BOX
  - EXISTING CONCRETE MONUMENT
  - PROPOSED RM-1.1 ROUND MONUMENT BOX
  - RAILROAD SPIKE FOUND
  - RAILROAD SPIKE SET
  - IRON PIN FOUND
  - IRON PIN FOUND W/ ID CAP
  - IRON PIN SET W/ ID CAP
  - IRON PIPE FOUND
  - IRON PIPE SET
  - P.K. NAIL FOUND
  - P.K. NAIL SET
  - CURVE/SPIRAL NUMBER

**NOTES:**

LOT LINES & CORPORATION LINES ARE SHOWN FOR GEOGRAPHIC PURPOSES ONLY. THESE LINES ARE BASED ON RECORD PLAN INFORMATION AND WERE NOT SURVEYED.

SEE SHEET 3 FOR THE INFORMATION BELOW:  
 -SURVEYOR CERTIFICATION  
 -BASIS OF BEARINGS, & R/W LOCATION NOTE  
 -EXISTING (MV#) AND PROPOSED MONUMENTATION  
 -SURVEY PARAMETERS.

## LORAIN COUNTY CONNECTICUT WESTERN RESERVE CITY OF ELYRIA, T-6-N, R-17-W BRACE TRACT LOTS 10, 14, 15, 17, 18, 19, 20 BURRELL & DAY TRACT LOT 9



RECEIVED \_\_\_\_\_, 20 \_\_\_\_  
 RECORDED \_\_\_\_\_, 20 \_\_\_\_  
 BOOK \_\_\_\_\_ PAGE \_\_\_\_\_  
 COUNTY RECORDER

SURVEYORS SEAL

DESIGN AGENCY  
**DGL**  
CONSULTING ENGINEERS

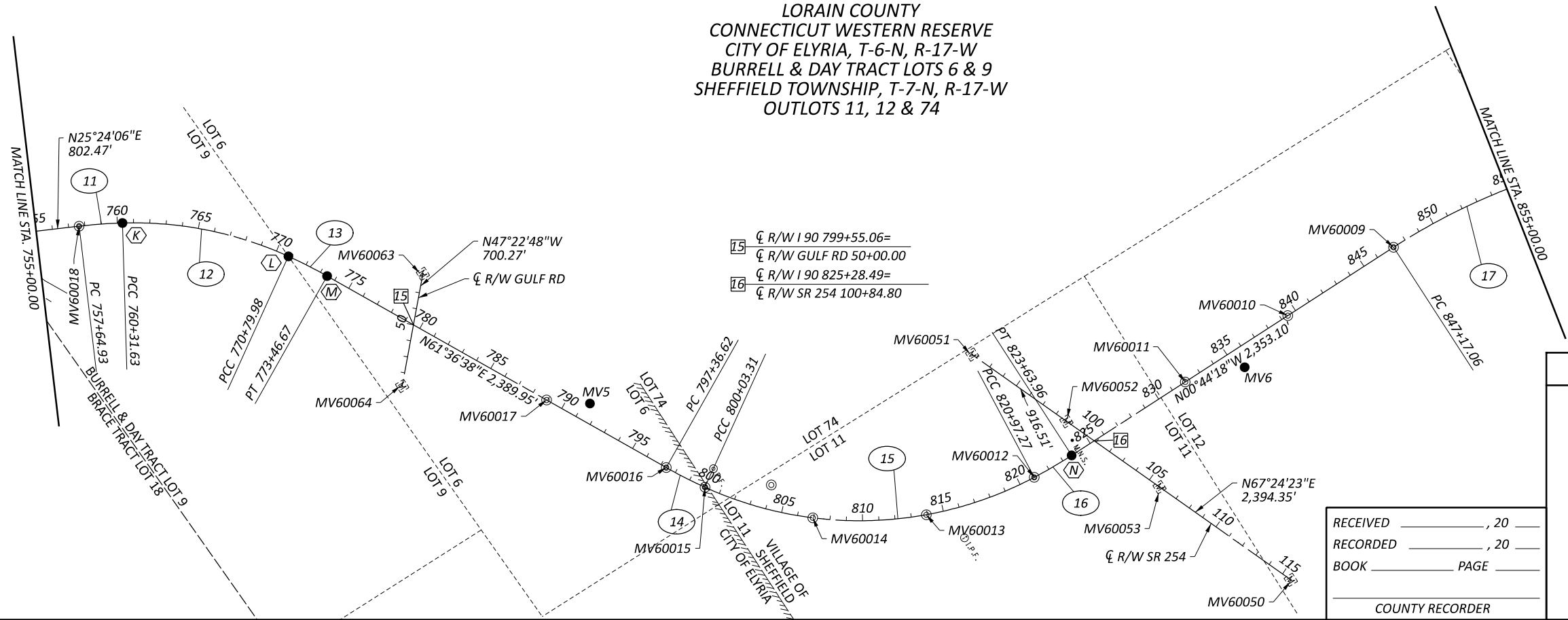
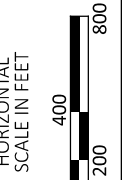
DESIGNER  
SEA

REVIEWER  
RJL MM-DD-YY

PROJECT ID  
107714

SUBSET	TOTAL
1	3
SHEET	TOTAL
P.0	0

**LOR-90-10.76**  
 LORAIN COUNTY  
 CONNECTICUT WESTERN RESERVE  
 CITY OF ELYRIA, T-6-N, R-17-W  
 BURRELL & DAY TRACT LOTS 6 & 9  
 SHEFFIELD TOWNSHIP, T-7-N, R-17-W  
 OUTLOTS 11, 12 & 74



SURVEYORS SEAL

---

RECEIVED \_\_\_\_\_, 20 \_\_\_\_  
 RECORDED \_\_\_\_\_, 20 \_\_\_\_  
 BOOK \_\_\_\_\_ PAGE \_\_\_\_  
 \_\_\_\_\_  
 COUNTY RECORDER

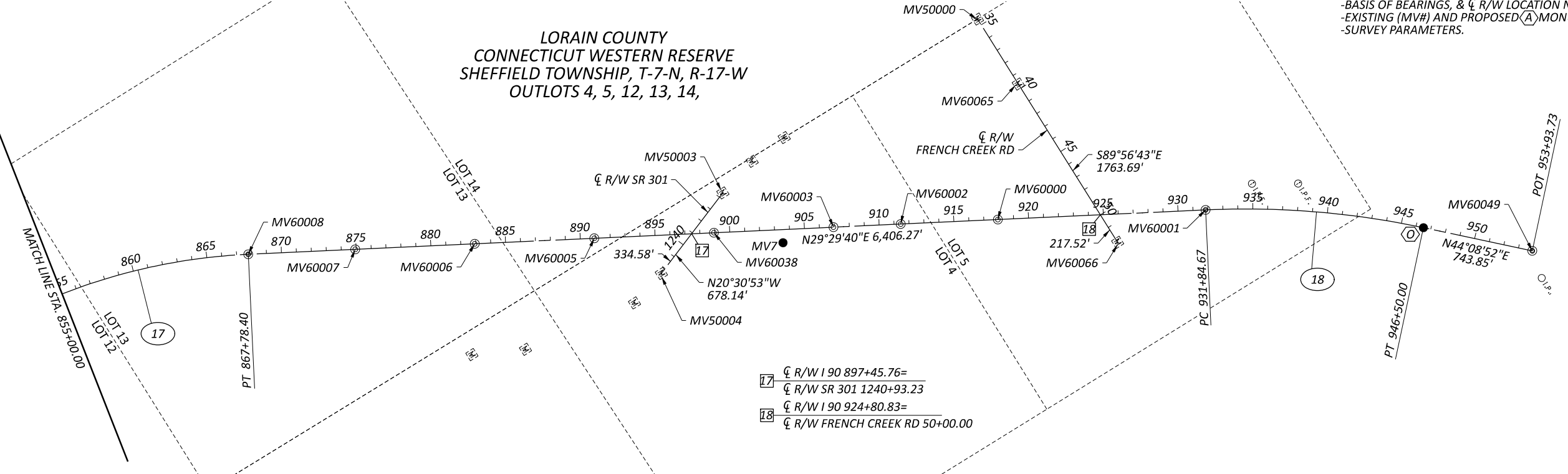
<b>CURVE 11</b> P.I. Sta. 758+98.36 $\Delta = 05^{\circ}00'00''$ (RT) Dc = $01^{\circ}52'29''$ R = 3,056.05' T = 133.43' L = 266.69' E = 2.91' C = 266.61' C.B. = N $27^{\circ}54'06''$ E	<b>CURVE 12</b> P.I. Sta. 765+65.14 $\Delta = 26^{\circ}12'32''$ (RT) Dc = $02^{\circ}30'00''$ R = 2,291.83' T = 533.51' L = 1,048.36' E = 61.28' C = 1,039.24' C.B. = N $43^{\circ}30'22''$ E	<b>CURVE 13</b> P.I. Sta. 772+13.41 $\Delta = 05^{\circ}00'00''$ (RT) Dc = $01^{\circ}52'29''$ R = 3,056.05' T = 133.43' L = 266.69' E = 2.91' C = 266.61' C.B. = N $59^{\circ}06'38''$ E	<b>CURVE 14</b> P.I. Sta. 798+70.05 $\Delta = 05^{\circ}00'00''$ (LT) Dc = $1^{\circ}52'29''$ R = 3,056.05' T = 133.43' L = 266.69' E = 2.91' C = 266.61' C.B. = N $59^{\circ}06'38''$ E	<b>CURVE 15</b> P.I. Sta. 811+29.76 $\Delta = 52^{\circ}20'56''$ (LT) Dc = $02^{\circ}30'00''$ R = 2,291.83' T = 1,126.45' L = 2,093.96' E = 261.87' C = 2,021.88' C.B. = N $30^{\circ}26'10''$ E	<b>CURVE 16</b> P.I. Sta. 822+30.70 $\Delta = 05^{\circ}00'00''$ (LT) Dc = $01^{\circ}52'29''$ R = 3,056.05' T = 133.43' L = 266.69' E = 2.91' C = 266.61' C.B. = N $01^{\circ}45'42''$ E	<b>CURVE 17</b> P.I. Sta. 857+72.33 $\Delta = 30^{\circ}13'59''$ (RT) Dc = $01^{\circ}28'00''$ R = 3,906.53' T = 1,055.27' L = 2,061.34' E = 140.02' C = 2,037.51' C.B. = N $14^{\circ}22'41''$ E	<b>CURVE 18</b> P.I. Sta. 939+21.35 $\Delta = 14^{\circ}39'12''$ (RT) Dc = $01^{\circ}00'00''$ R = 5,729.58' T = 736.68' L = 1,465.33' E = 47.17' C = 1,461.34' C.B. = N $36^{\circ}49'16''$ E
--	---	--	---	--	--	--	---

**NOTES:**

LOT LINES & CORPORATION LINES ARE SHOWN FOR GEOGRAPHIC PURPOSES ONLY. THESE LINES ARE BASED ON RECORD PLAN INFORMATION AND WERE NOT SURVEYED.

SEE SHEET 3 FOR THE INFORMATION BELOW:  
 -SURVEYOR CERTIFICATION  
 -BASIS OF BEARINGS, &  $\zeta$  R/W LOCATION NOTE  
 -EXISTING (MV#) AND PROPOSED (A) MONUMENTATION  
 -SURVEY PARAMETERS.

**LORAIN COUNTY**  
 CONNECTICUT WESTERN RESERVE  
 SHEFFIELD TOWNSHIP, T-7-N, R-17-W  
 OUTLOTS 4, 5, 12, 13, 14,



$\zeta$  R/W I 90 897+45.76=  
 $\zeta$  R/W SR 301 1240+93.23  
 $\zeta$  R/W I 90 924+80.83=  
 $\zeta$  R/W FRENCH CREEK RD 50+00.00

**LOR-90-10.76**

MODEL: 107714\_FC002 (Sheet) PAPER SIZE: 17x11 (in.) DATE: 8/29/2022 TIME: 8:23:42 AM USER: SEA  
 M:22016 (ODOT - LOR-90-10.76 Surveying Services (PID 107714, Agreement No. 36745))\107714\400-Engineering\FW\Sheets\107714\_FC002.dgn

**CENTERLINE PLAT (2 OF 3)**

DESIGN AGENCY	
DESIGNER	SEA
REVIEWER	RJL MM-DD-YY
PROJECT ID	107714
SUBSET	TOTAL
2	3
SHEET	TOTAL
P.0	0

# LOR-90-10.76

## LORAIN COUNTY CONNECTICUT WESTERN RESERVE

CITY OF ELYRIA, T-6-N, R-17-W  
BRACE TRACT LOTS 1, 3, 5, 7, 10, 14, 15, 17, 18, 19, 20, 46 & 47  
BURRELL & DAY TRACT LOTS 6 & 9

SHEFFIELD TOWNSHIP, T-7-N, R-17-W  
OUTLOTS 4, 5, 11, 12, 13, 14 & 74

### BASIS FOR BEARINGS:

ALL BEARINGS SHOWN HEREON ARE FOR PROJECT USE ONLY AND ARE BASED ON THE OHIO STATE PLANE COORDINATE SYSTEM, NORTH ZONE, NAD 83 (2011). SAID COORDINATES ORIGINATED FROM OPUS SOLUTIONS FOR MONUMENTS LISTED AS PRIMARY CONTROL POINTS. THE PORTION OF THE CENTERLINE OF SR 90 HAVING A BEARING OF N 85°13'57" E IS DESIGNATED THE "BASIS OF BEARING" FOR THIS SURVEY.

### NOTES:

THE CENTERLINE OF RIGHT OF WAY LOCATION OF IR 90 AND CROSSING ROADS SHOWN HEREON WAS DETERMINED FROM THE OHIO DEPARTMENT OF TRANSPORTATION RIGHT OF WAY PLANS TITLED "LOR-90-9.48", "LOR-90-11.78", "LOR-90-11.90" (LOR-254-4.08)", "LOR-90-12.42", "LOR-90-13.01", "LOR-90-13.20", "LOR-90-14.26", "LOR-90-17.21", "LOR-57-19.42" AND LOR-301-23.49 ON FILE AT THE DISTRICT 3 OFFICE IN ASHLAND, OHIO.

NEGATIVE (-) OFFSET VALUES ARE TO THE LEFT SIDE OF THE REFERENCED C

ALL COORDINATES ARE PROJECT GROUND COORDINATES AND ARE BASED ON THE OHIO STATE PLANE COORDINATES SYSTEM NORTH ZONE ON NAD 83 2011 DATUM.

CHANGES OR ALTERATIONS TO THE LOCATION OF ANY MONUMENTS SHOWN IN THIS TABLE, REQUIRE PRIOR APPROVAL FROM THE DISTRICT REAL ESTATE ADMINISTRATOR OF THE OHIO DEPARTMENT OF TRANSPORTATION. IN THE EVENT THAT CHANGES OR ALTERATIONS ARE APPROVED, A REVISED CENTERLINE PLAT WITH THE NEW LOCATIONS SHALL BE RECORDED IN THE APPLICABLE COUNTY RECORDS AND THE OHIO DEPARTMENT OF TRANSPORTATION. SPECIFICATIONS FOR MONUMENT ASSEMBLIES, REFERENCE MONUMENTS AND RIGHT OF WAY MONUMENTS ARE SHOWN ON STANDARD CONSTRUCTION DRAWING RM-1.1.

SETTING OF ALL MONUMENTS SHALL BE PERFORMED AND CERTIFIED BY A SURVEYOR REGISTERED IN THE STATE OF OHIO. THE MONUMENT ASSEMBLIES AND REFERENCE MONUMENTS WILL BE INSTALLED BY THE CONTRACTOR AT THE TIME OF CONSTRUCTION. THE IRON PIN AND CAP (WHEN REQUIRED) ARE TO BE INSTALLED BY THE CONTRACTOR'S SURVEYOR.

SEE SHEETS 1 AND 2 FOR PLAN VIEW MONUMENTATION.

### SURVEYING PARAMETERS

USE THE FOLLOWING PROJECT CONTROL, VERTICAL POSITIONING, AND HORIZONTAL POSITIONING PARAMETERS FOR ALL SURVEYING:

#### PROJECT CONTROL

POSITIONING METHOD: OPUS SOLUTIONS, VRS ODOT CORS NETWORK & DIFFERENTIAL LEVELING

MONUMENT TYPE: CONCRETE MONUMENTS W/ IRON PINS & CAPS SET

#### VERTICAL POSITIONING

ORTHOMETRIC HEIGHT DATUM: NAVD 88  
GEOID: 18

#### HORIZONTAL POSITIONING

REFERENCE FRAME: NAD83 (2011)  
ELLIPSOID: GRS80  
MAP PROJECTION: LAMBERT CONFORMAL CONIC  
COORDINATE SYSTEM: OHIO STATE PLANE, NORTH ZONE  
COMBINED SCALE FACTOR: 1.00006950  
ORIGIN OF COORDINATE SYSTEM: NORTHING 0, EASTING 0

USE THE POSITIONING METHODS AND MONUMENT TYPE USED IN THE ORIGINAL SURVEY TO RESTORE ALL MONUMENTS RELATED TO PRIMARY PROJECT CONTROL THAT ARE DAMAGED OR DESTROYED BY CONSTRUCTION ACTIVITIES. RESTORE THE DAMAGED OR DESTROYED MONUMENTS IN ACCORDANCE WITH CMS 623.

UNITS ARE IN U.S. SURVEY FEET.

I-90 FOUND MONUMENTATION (STA 568+12.80 TO STA 611+91.41)					
POINT	STATION	OFFSET	NORTHING	EASTING	DESCRIPTION
MV50010	585+08.59	CL	631252.153	2062618.286	CMON W/ 5/8" PIN
MV60022	593+08.70	-0.03	631855.426	2063139.915	CMON W/ 1/2" PIN
MV50011	611+91.41	CL	632312.201	2063852.862	CMON W/ 5/8" PIN
MV50012	593+08.70	CL	632689.782	2064814.168	CMON W/ 5/8" PIN

SR2 / I-90 FOUND MONUMENTATION (STA 587+61.87 TO STA 953+93.85)					
POINT	STATION	OFFSET	NORTHING	EASTING	DESCRIPTION
MV60056	587+61.87	CL	635028.290	2063326.341	CMON W/ 8109 CAPPED PIN
MV60055	610+34.40	CL	633758.352	2065210.916	CMON W/ 8109 CAPPED PIN
MV60021	640+93.46	CL	633001.700	2068115.062	CMON W/ 1/2" I PIN
MV50017	658+63.28	CL	633148.791	2069878.764	CMON W/ 5/8" I PIN
MV60020	732+93.96	0.17	634133.342	2077188.446	CMON W/ 1/2" I PIN
MV60018	757+64.78	CL	636133.405	2078573.930	CMON W/ ODOT CAP
MV60017	788+93.74	CL	637995.367	2081004.009	CMON W/ 1/2" I PIN
MV60016	797+37.17	CL	638396.382	2081746.000	CMON W/ 1/2" I PIN
MV60015	800+03.80	0.01	638533.256	2081974.721	CMON W/ 1/2" I PIN
MV60014	806+94.03	0.10	638993.581	2082485.561	CMON W/ 1/2" I PIN
MV60013	813+94.21	0.16	639593.970	2082840.562	CMON W/ 1/2" I PIN
MV60012	820+97.78	0.04	640276.757	2082998.623	CMON W/ 1/2" I PIN
MV60011	831+93.83	CL	641372.534	2082996.046	CMON W/ 1/2" I PIN
MV60010	839+43.88	-0.11	642122.520	2082986.274	CMON W/ 1/2" I PIN
MV60009	847+16.45	CL	642895.023	2082976.423	CMON W/ 1/2" I PIN
MV60008	867+77.84	CL	644868.840	2083482.095	CMON W/ 1/2" I PIN
MV60007	874+93.90	0.04	645492.082	2083834.679	CMON W/ 1/2" I PIN
MV60006	882+93.75	0.06	646188.259	2084228.487	CMON W/ 1/2" I PIN
MV60005	890+93.89	0.04	646884.715	2084622.415	CMON W/ 1/2" I PIN
MV60038	898+94.37	CL	647581.476	2085016.495	CMON
MV60003	906+94.47	0.05	648277.856	2085410.449	CMON W/ 1/2" I PIN
MV60002	911+44.48	-0.01	648669.571	2085631.963	CMON W/ 1/2" I PIN
MV60000	917+94.59	0.11	649235.377	2085952.146	CMON W/ 1/2" I PIN
MV60001	931+84.67	CL	650445.359	2086636.440	CMON W/ 1/2" I PIN
MV60049	953+93.85	CL	652148.921	2088030.351	CMON W/ 1/2" I PIN

I-90 PROPOSED MONUMENTATION (STA 568+12.80 TO STA 611+91.41)						
POINT	STATION	OFFSET	NORTHING	EASTING	DESCRIPTION	ITEM 623
A	TS 573+80.39	CL	630210.674	2062201.969	RM 1.1 - TYPE A MONUMENT	1
B	SC 574+80.39	CL	630308.193	2062224.101	RM 1.1 - TYPE A MONUMENT	1
C	PCC 576+80.40	CL	630501.562	2062275.142	RM 1.1 - TYPE A MONUMENT	1
D	PT 603+54.90	CL	632387.829	2064034.054	RM 1.1 - TYPE A MONUMENT	1

I-90 PROPOSED MONUMENTATION (STA 587+61.87 TO STA 953+93.85)						
POINT	STATION	OFFSET	NORTHING	EASTING	DESCRIPTION	ITEM 623
E	POL 670+00.00	CL	633243.264	2071011.548	RM 1.1 - TYPE A MONUMENT	1
F	POL 690+00.00	CL	633409.485	2073004.628	RM 1.1 - TYPE A MONUMENT	1
G	TS 716+65.48	CL	633631.014	2075660.882	RM 1.1 - TYPE A MONUMENT	1
H	SC 719+65.48	CL	633661.148	2075959.328	RM 1.1 - TYPE A MONUMENT	1
I	CS 746+62.46	CL	635139.976	2078096.395	RM 1.1 - TYPE A MONUMENT	1
J	ST 749+62.46	CL	635408.658	2078229.768	RM 1.1 - TYPE A MONUMENT	1
K	PCC 760+31.63	CL	636369.162	2078698.758	RM 1.1 - TYPE A MONUMENT	1
L	PCC 770+79.98	CL	637122.923	2079414.204	RM 1.1 - TYPE A MONUMENT	1
M	PT 773+46.67	CL	637259.794	2079642.994	RM 1.1 - TYPE A MONUMENT	1
N	PT 823+63.96	CL	640542.729	2083006.741	RM 1.1 - TYPE A MONUMENT	1
O	PT 946+50.00	CL	651615.173	2087512.248	RM 1.1 - TYPE A MONUMENT	1
TOTALS CARRIED TO THE GENERAL SUMMARY						15

LAKE AVE FOUND MONUMENTATION					
POINT	STATION	OFFSET	NORTHING	EASTING	DESCRIPTION
MV60057	63+00.13	1.04	632761.515	2069672.331	MONBOX W/ 1" I PIN
MV60058	73+53.45	-10.66	633539.441	2069370.733	MONBOX W/ 1" I PIN

SR 57 FOUND MONUMENTATION					
POINT	STATION	OFFSET	NORTHING	EASTING	DESCRIPTION
MV60060	144+32.22	CL	633161.034	2073736.300	MONBOX W/ 5/8" I PIN
MV60059	153+00.04	CL	634022.120	2073628.444	MONBOX W/ 5/8" I PIN

W RIVER RD FOUND MONUMENTATION					
POINT	STATION	OFFSET	NORTHING	EASTING	DESCRIPTION
MV60061	45+00.29	CL	633181.470	2075727.187	MONBOX W/ 3/4" I PIN
MV60062	53+00.05	CL	633876.846	2075332.141	MONBOX W/ 3/4" I PIN

GULF RD FOUND MONUMENTATION					
POINT	STATION	OFFSET	NORTHING	EASTING	DESCRIPTION
MV60064	46+17.99	CL	637290.386	2080459.319	MONBOX W/ 3/4" I PIN
MV60063	53+18.26	CL	637764.564	2079944.013	MONBOX W/ 3/4" I PIN

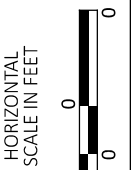
SR 254 FOUND MONUMENTATION					
POINT	STATION	OFFSET	NORTHING	EASTING	DESCRIPTION
MV60051	91+68.29	CL	640355.131	2082158.447	MONBOX W/ 1" I PIN
MV60052	98+76.31	0.10	640627.056	2082812.168	MONBOX W/ 1" I PIN
MV60053	105+76.40	0.19	640895.940	2083458.560	MONBOX W/ 1" I PIN
MV60050	115+62.64	CL	641275.016	2084369.038	MONBOX W/ 1" I PIN

SR 301 FOUND MONUMENTATION					
POINT	STATION	OFFSET	NORTHING	EASTING	DESCRIPTION
MV50004	1237+58.66	CL	647138.763	2085060.573	MONBOX W/ 1" I PIN
MV50003	1244+36.79	CL	647773.892	2084822.921	MONBOX W/ 1" I PIN

FRENCH CREEK RD FOUND MONUMENTATION					
POINT	STATION	OFFSET	NORTHING	EASTING	DESCRIPTION
MV50000	34+53.82	CL	649834.206	2084743.733	MONBOX W/ 1" I PIN
MV60065	39+67.11	0.01	649833.705	2085257.020	MONBOX W/ 3/4" I PIN
MV60066	52+17.52	CL	649832.523	2086507.427	MONBOX W/ 3/4" I PIN

I, R.J. LUMBREZER, P. S. HAVE CONDUCTED A SURVEY OF THE EXISTING CONDITIONS FOR THE STATE OF OHIO DEPARTMENT OF TRANSPORTATION IN JUNE & JULY OF 2022. THE RESULTS OF THAT SURVEY ARE CONTAINED HEREIN. THE HORIZONTAL COORDINATES EXPRESSED HEREIN ARE BASED ON THE OHIO STATE PLANE COORDINATES SYSTEM NORTH ZONE ON NAD 83 2011 DATUM. THE PROJECT COORDINATES (US SURVEY FEET) ARE RELATIVE TO STATE PLANE GRID COORDINATES (METERS OR US SURVEY FEET) BY A PROJECT ADJUSTMENT FACTOR OF 0.99993050. AS A PART OF THIS PROJECT I HAVE REESTABLISHED THE LOCATION OF THE EXISTING CENTERLINE OF RIGHT OF WAY. ALL OF MY WORK CONTAINED HEREIN WAS CONDUCTED IN ACCORDANCE WITH OHIO ADMINISTRATIVE CODE 4733-37 COMMONLY KNOWN AS MINIMUM STANDARDS FOR BOUNDARY SURVEYS IN THE STATE OF OHIO UNLESS NOTED. THE WORDS I AND MY AS USED HEREIN ARE TO MEAN EITHER MYSELF OR SOMEONE WORKING UNDER MY DIRECT SUPERVISION.

R.J. LUMBREZER, PROFESSIONAL LAND SURVEYOR 8029 DATE \_\_\_\_\_



CENTERLINE PLAT (3 OF 3)

RECEIVED \_\_\_\_\_, 20 \_\_\_\_

RECORDED \_\_\_\_\_, 20 \_\_\_\_

BOOK \_\_\_\_\_ PAGE \_\_\_\_\_

\_\_\_\_\_  
COUNTY RECORDER

SURVEYORS SEAL

DESIGN AGENCY

DESIGNER

SEA

REVIEWER

RJL MM-DD-YY

PROJECT ID

107714

SUBSET TOTAL

3 3

SHEET TOTAL

P.0 0

