

O.D.O.T. DISTRICT 2 SURVEY OFFICE

PERSONNEL \_\_\_\_\_

REFERENCE NO. 35

SHEET 22 OF 27

NOTES C. LOEHEK:

H.C. T. Kuss

DATE 7-8-78

ROUTE U.S. 20

R.C. M. Cantelero

WEATHER Clear

COUNTY LUCAS

TEMP. 41.8

TOWNSHIP SYLVANIA

SECTION 22

T.     R.    

TYPE MONUMENT Mon. Pav

ON SURFACE - BELOW Yes

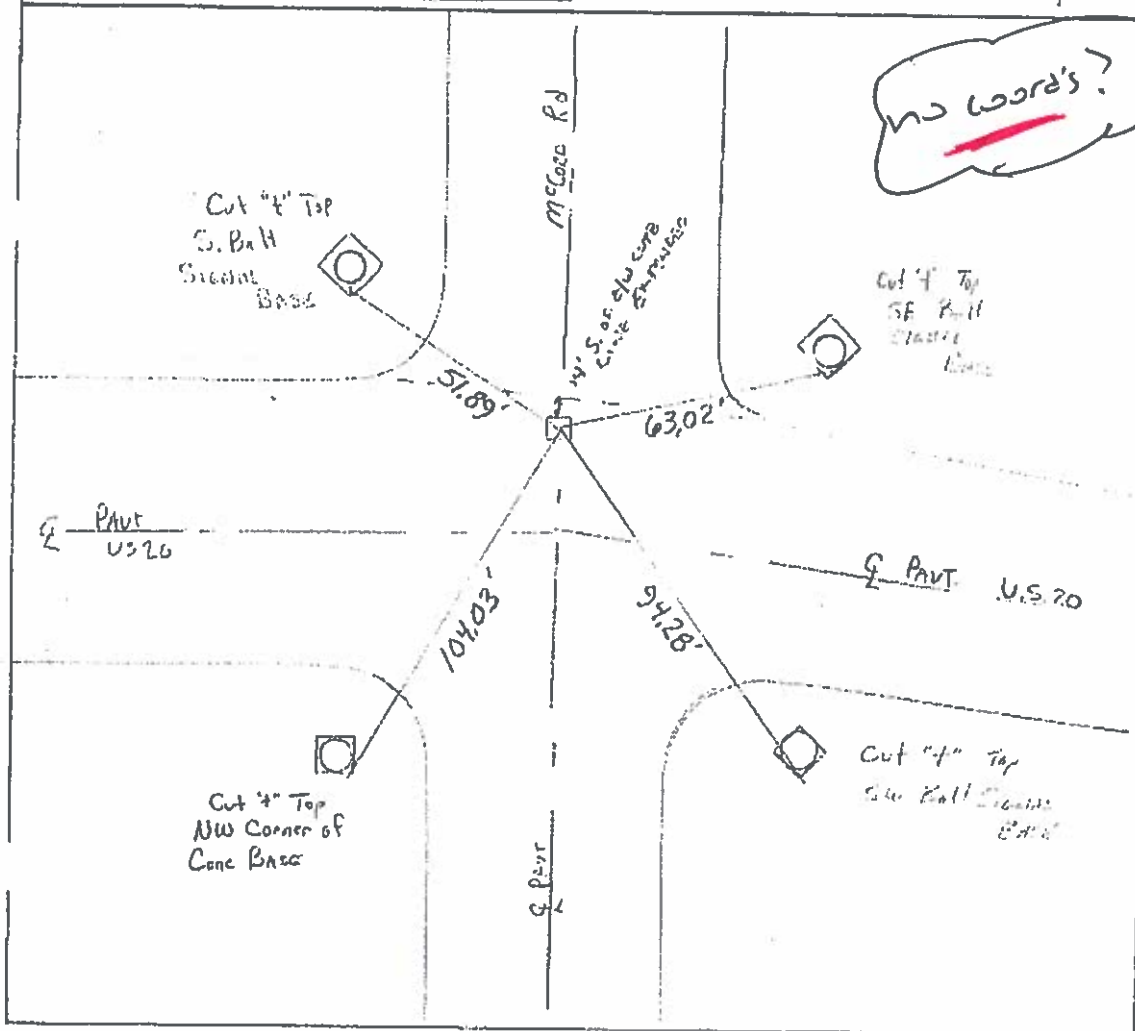
LEFT- & PAV'T. - RIGHT ±25' Lt

TO EDGE PAVEMENT

S.L.M. 481+12

22	23
27	26

Possible



O.D.O.T. DISTRICT 2 SURVEY OFFICE

PERSONNEL \_\_\_\_\_

REFERENCE NO. 34C

SHEET 20 OF 27

NOTES LOEHRKE

H.C. CANTERBURY

DATE 7-8-76

ROUTE U.S. 20

R.C. HELM

WEATHER DAMP

COUNTY Lucas

TEMP. +80

TOWNSHIP Sylvania

SECTION 21

T. \_\_\_\_\_ R. \_\_\_\_\_

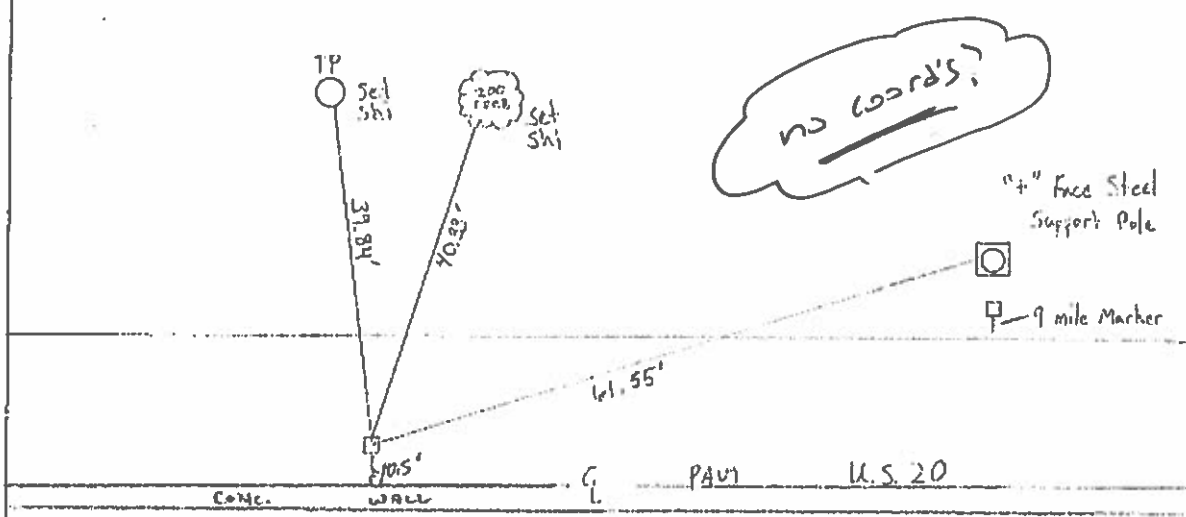
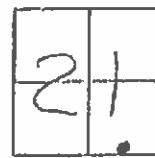
TYPE MONUMENT Man Boy

ON SURFACE - ~~BELOW~~ Yes

LEFT- & PAV'T. - RIGHT ± 17.5' Lt

1/2" H TO 4" EDGE PAVEMENT

S.L.M. 477+47 Just West of 3 mile Post



no coords?

4\"/>

9 mile Marker

O.D.O.T. DISTRICT 2 SURVEY OFFICE

PERSONNEL \_\_\_\_\_

REFERENCE NO. 34 B

SHEET 21 OF 27

NOTES LOEHRKE

H.C. CANTONBURY

R.C. Helm

DATE 7-8-98

WEATHER DAMP

TEMP. +78

ROUTE US 20

COUNTY LUCAS

TOWNSHIP SYLVANIA

SECTION 21

T \_\_\_\_\_ R \_\_\_\_\_

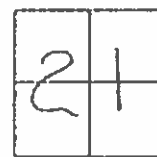
TYPE MONUMENT Med. Box

ON SURFACE - BELOW Yes

LEFT- & PAW'T. - RIGHT 18' Lt

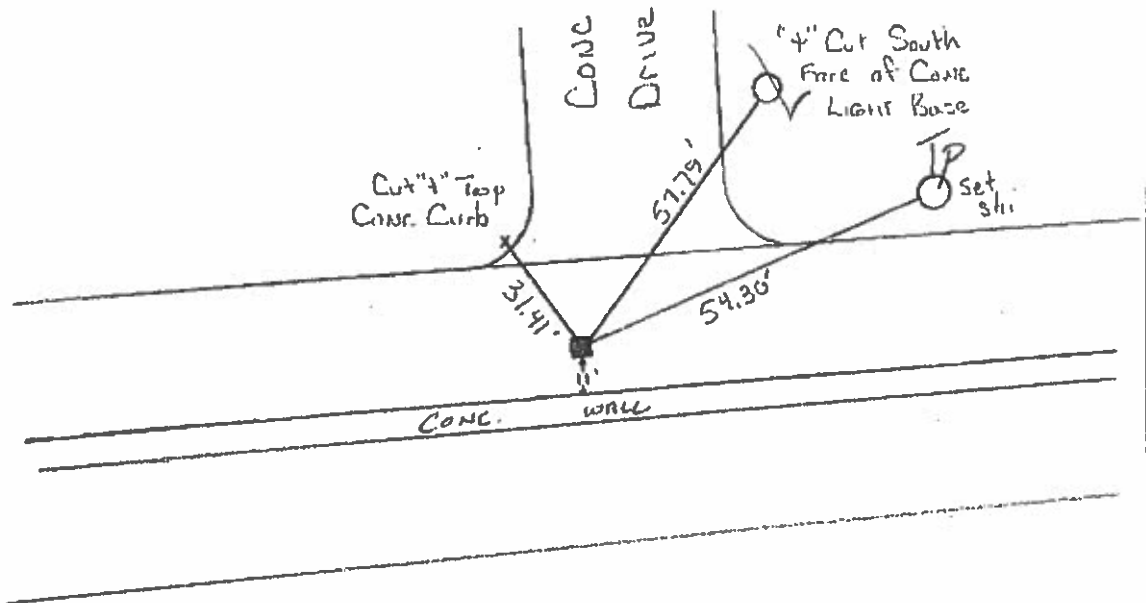
12.7 TO Lt EDGE PAVEMENT

S.L.M. 473 +00 ± 800' West of McCord Rd.



Sterling Store

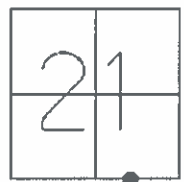
no coord's?



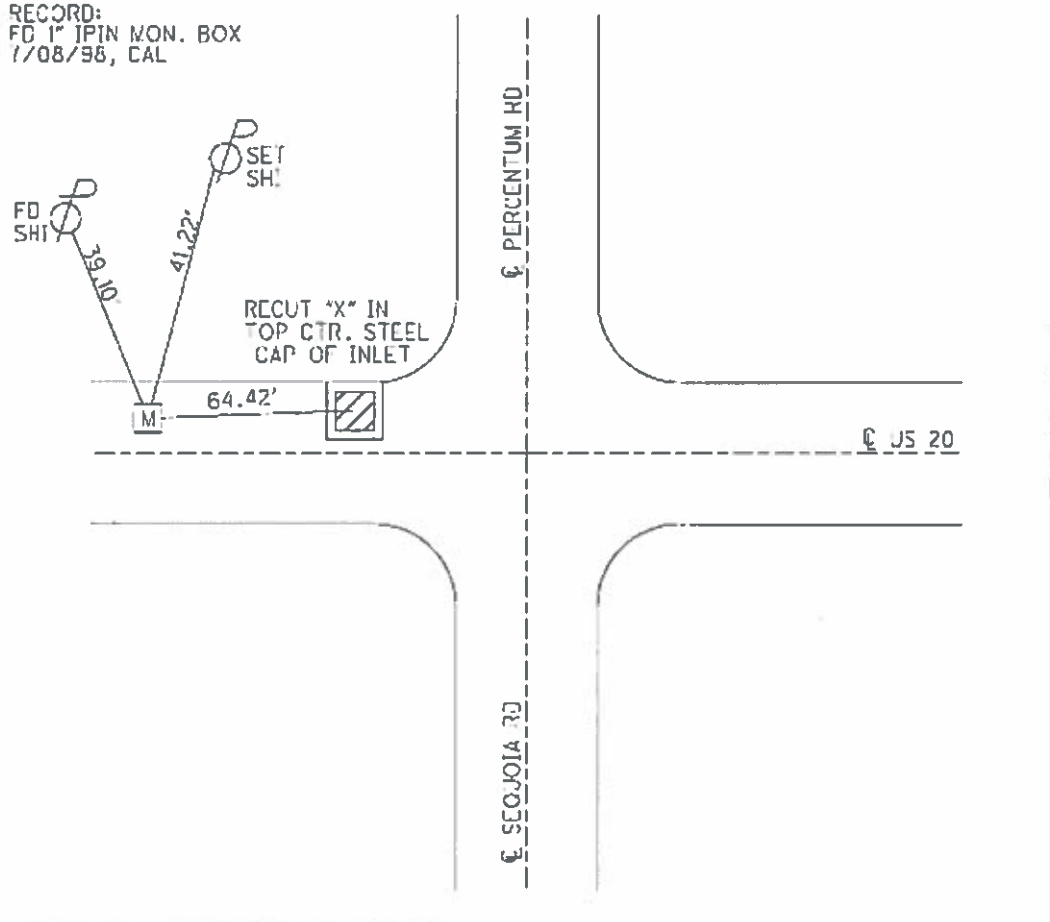
**O.D.O.T. DISTRICT 2 SURVEY OFFICE (USE ONLY)**

PERSONNEL \_\_\_\_\_ REFERENCE NO. 33A SHEET 10 OF 11  
 NOTES NUMBER \_\_\_\_\_ DATE 8/14/07 ROUTE US 20  
 H.C. FUSS WEATHER CLOUDY COUNTY LUCAS  
 R.C. MOSEY TEMP. 70° TOWNSHIP SYLVANIA  
 \_\_\_\_\_ SECTION 21  
 T 9 S R 9 E

TYPE MONUMENT 1" IPIN MON. BOX  
 ON SURFACE - BELOW ON  
 LEFT - C PAV'T - RIGHT 17.8'  
22.1' TO LI EDGE PAVEMENT  
 S.L.M. 463+00  
 GRID: NORTHING: 73372.15 EASTING: 1538054.40



RECORD:  
 FD 1" IPIN MON. BOX  
 7/08/98, CAL





**PROUDFOOT ASSOCIATES**  
ENGINEERS & SURVEYORS

Mc Cord / Central

Personnel: PHL

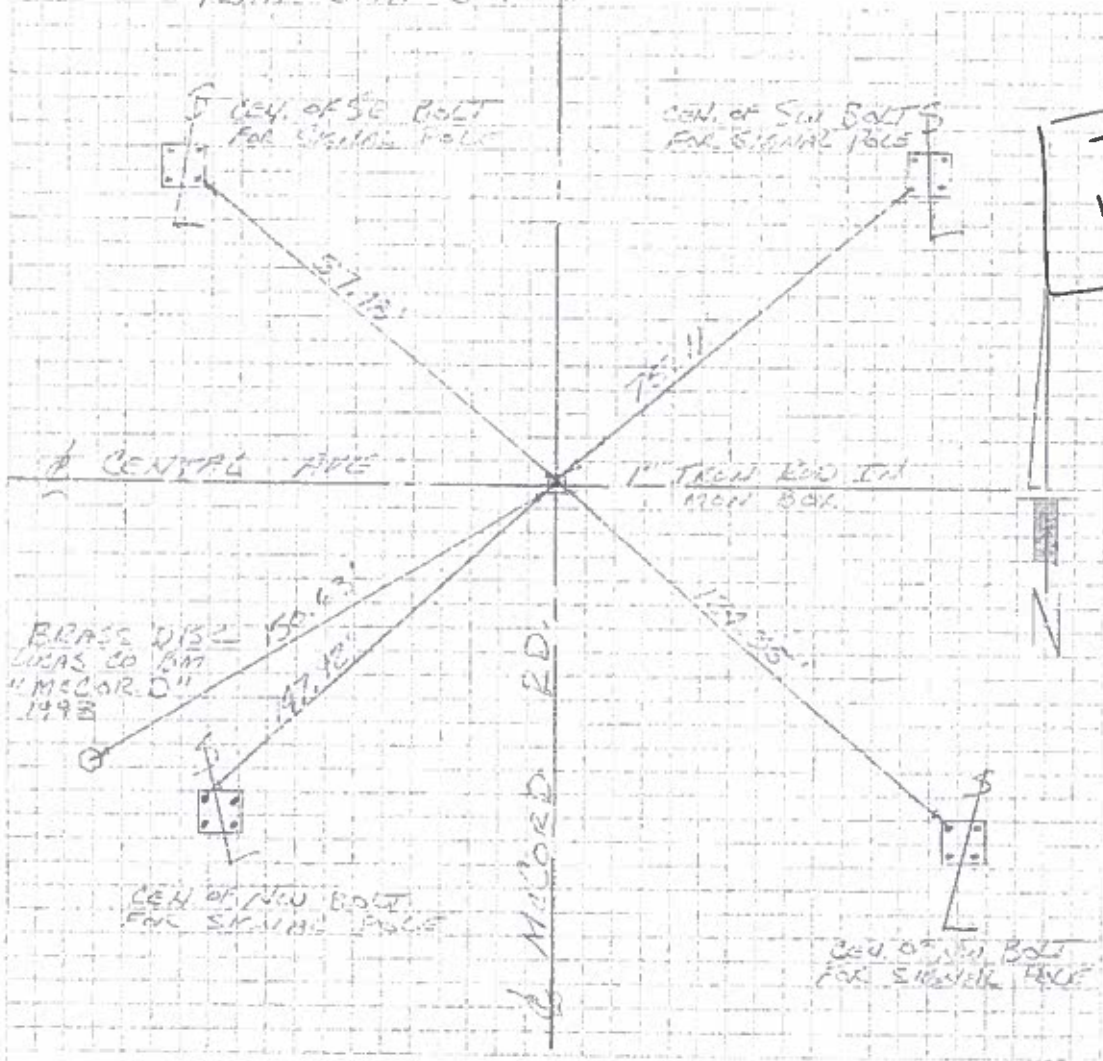
County: LUCAS

Sec. 21-22  
Town: 27-28  
Range: 3-4

Project #: 053518  
Date: 11/26/07  
Weather: ERLY 37°

Description:

FINAL REFORMS - SEC COR. MCDORD'S CENTRAL  
PLAN STA. 50+50



734083.49  
1639828.12

O.D.O.T. DISTRICT 2 SURVEY OFFICE

PERSONNEL \_\_\_\_\_

REFERENCE NO. 36

SHEET 23 OF 27

NOTES Loehrk

H.C. CANTERBURY

DATE 7-8-98

ROUTE U.S. 20

R.C. Helm

WEATHER Humid

COUNTY LUCAS

TEMP. +82

TOWNSHIP SYLVANIA

SECTION 20

T.    R.   

TYPE MONUMENT Mon Box

ON SURFACE - BELW Yes

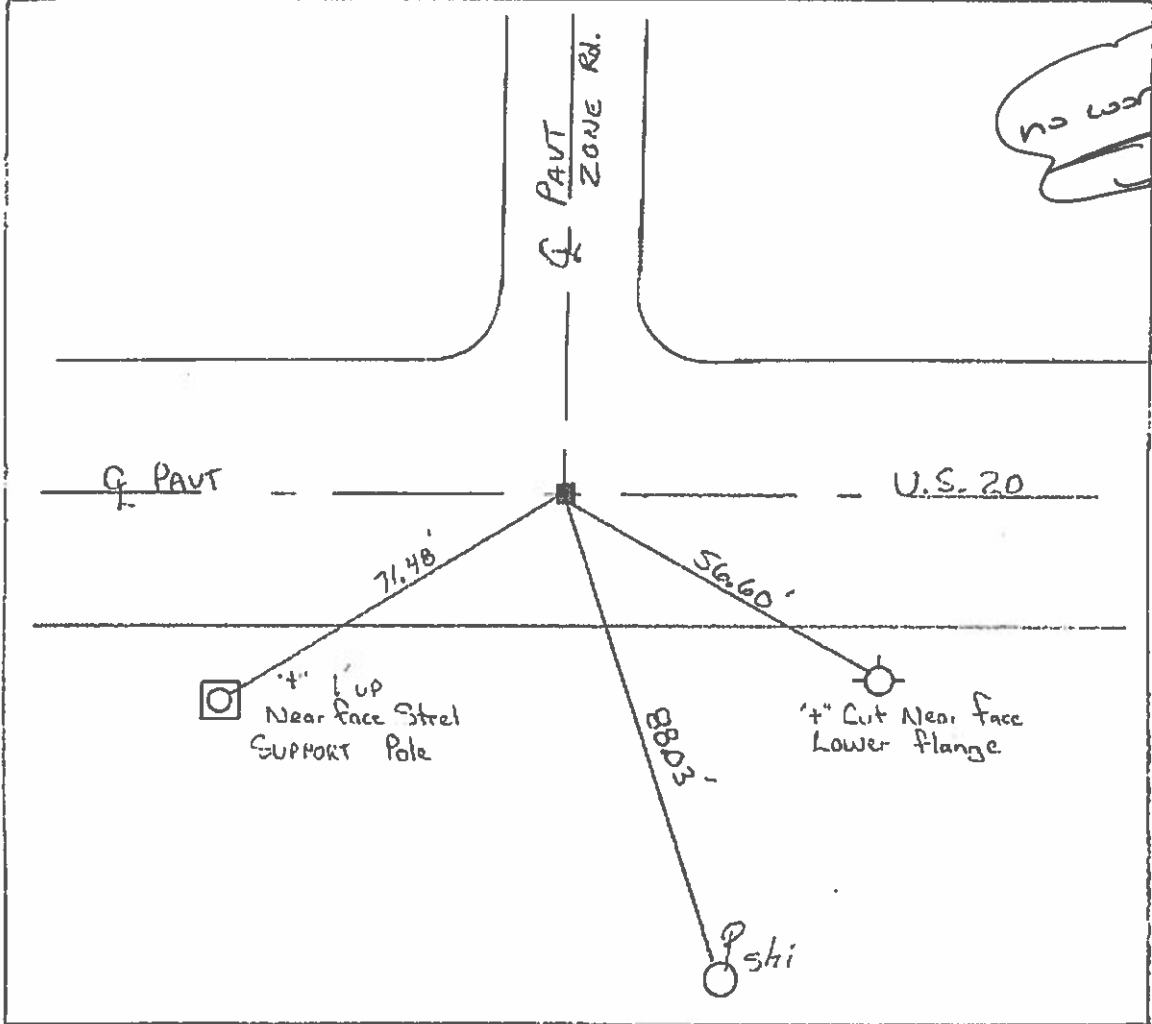
LEFT - Q PAV'T. - RIGHT Yes - Q Roth

± 44.5 TO RT. EDGE PAVEMENT CURB

S.L.M. 484771 ± 350' East of McCoro Rd.

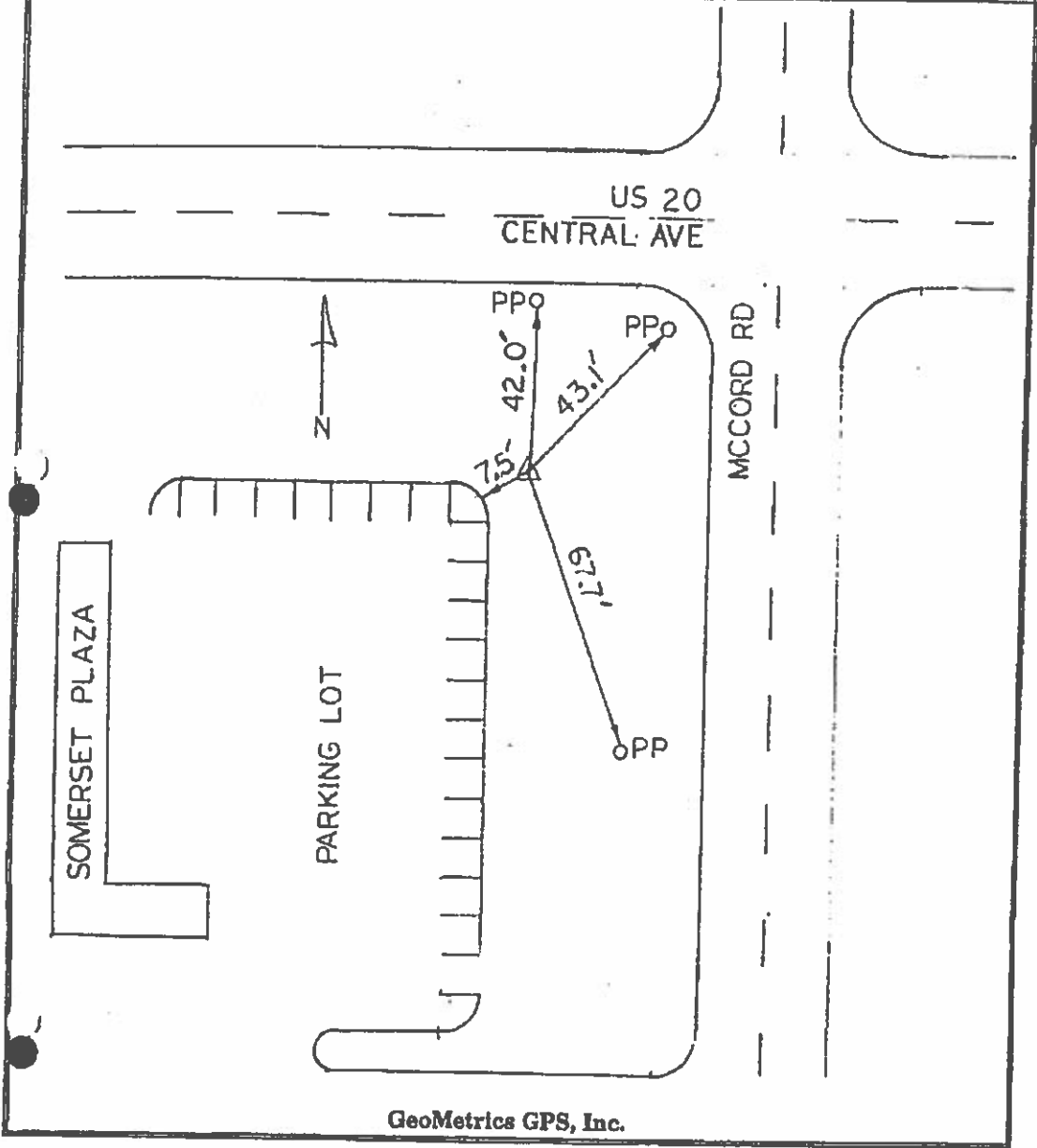


*no words?*



12" Conc. Mon 653.66  
 733944.67  
 1639768.91

DATE: August 1993	STATION	TYPE OF MARK: Brass Disk set in concrete
COUNTY: Lucas	MCCORD GPS 0400	ESTABLISHED BY: GeoMetrics GPS, Inc.
TOWNSHIP: Sylvania		STAMPING ON MARK: MCCORD 1993



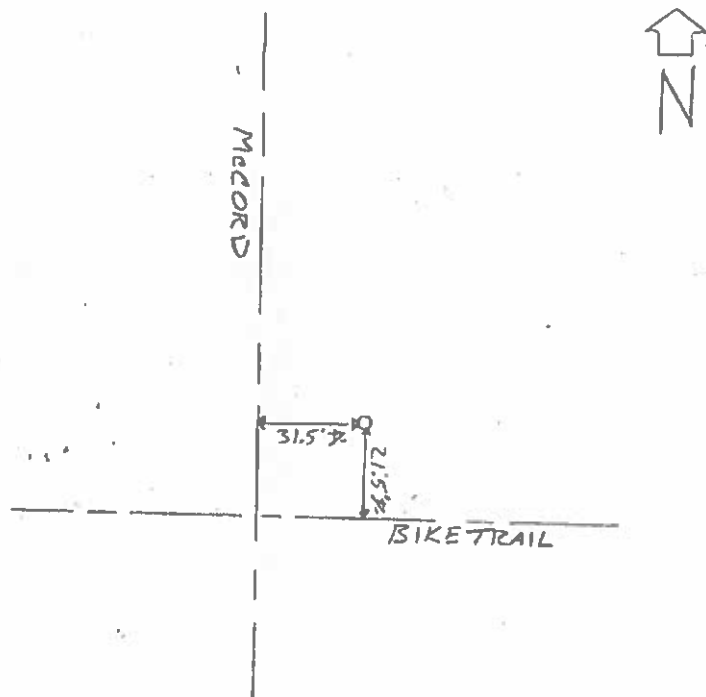
GeoMetrics GPS, Inc.

Chief C. CORNEU  
Technician TJB  
Rod \_\_\_\_\_

Lucas County Engineer's Office  
One Government Center, Suite 870  
Toledo, Ohio 43604-2258

Sketch of B.M. Location

Station I.D.: BM 114 Date: 4-11-06  
File Name: 475 STRIP TSC #: 40629 Observer: TJB  
Julian Day: 101 GPS No.: 5440



Stamping: 114  
Kind of Monument: SQUARE CONCRETE BRASS PLATE  
Remarks: 2.2' BELOW SURFACE ALSO GPS POINT



733632,385  
1637420,763  
652,589

Chief KAUFMAN  
Technician \_\_\_\_\_  
Rod \_\_\_\_\_

Lucas County Engineer's Office  
One Government Center, Suite 870  
Toledo, Ohio 43604-2258

Sketch of B.M. Location

Station I.D.: 815 Date: 3-20-06

File Name: 475STRIP 29 TSC #: 3TLSB Observer: KAUFMAN

Julian Day: 079 GPS No.: 5376

The sketch shows a street layout. A vertical line on the left is labeled 'KING RD.' and a horizontal line is labeled 'CENTRAL AVE'. A distance of '2640\'' is marked between the intersection and a monument. The monument is a circle with a dot inside, labeled '62'. A vertical line labeled 'SQUIRREL BEND' intersects 'CENTRAL AVE' at the monument. A north arrow is on the right side.

Stamping: 815

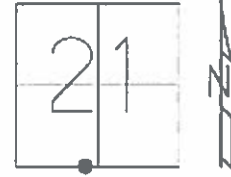
Kind of Monument: 1" DIA CONCL. W/ BRASS PLATE

Remarks: @ SURFACE

**O.D.O.T. DISTRICT 2 SURVEY OFFICE (USE ONLY)**

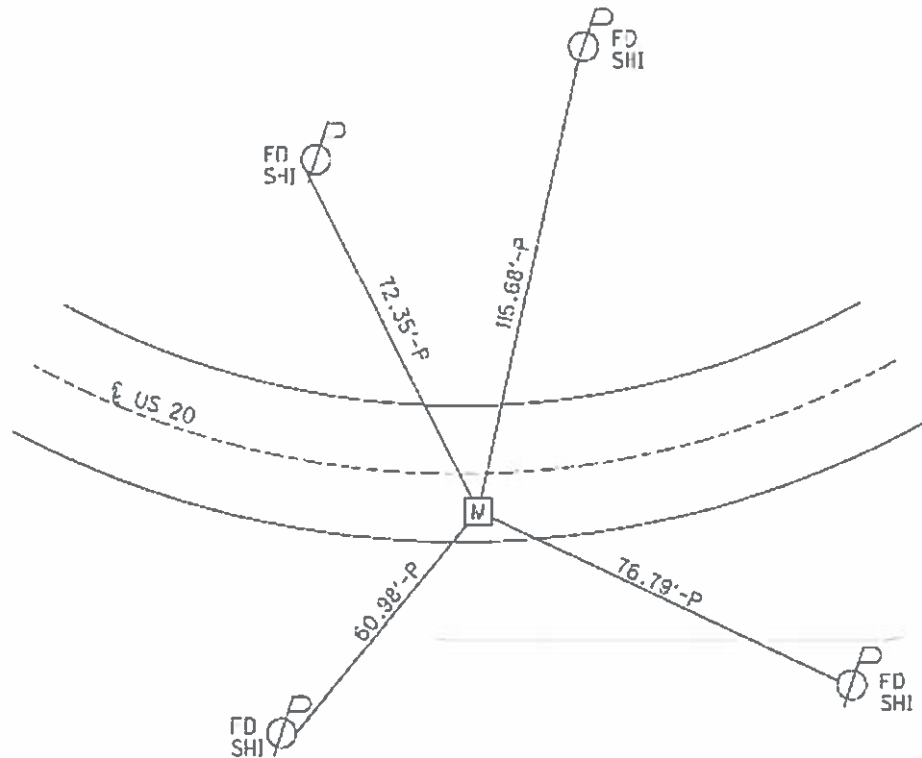
PERSONNEL \_\_\_\_\_ REFERENCE NO. 3 SHEET 7 OF 11  
 NOTES NUHFER DATE 8/14/07 ROUTE US 20  
 H.C. BUSS WEATHER CLOUDY COUNTY LUCAS  
 R.C. MOSEK TEMP. 70° TOWNSHIP SYLVANIA  
 SECTION 21  
 T 9 S R 6 E

TYPE MONUMENT 1" IPIN MON. BOX  
 ON SURFACE - BELOW ON  
 LEFT - ☉ PAV'T - RIGHT 13'  
16' TO RT. EDGE PAVEMENT  
 S.L.M. 454+00.58



GRID: NORTHING: 733527.60 EASTING: 1637173.21

RECORD:  
 1" IPIN MON. BOX  
 7/08/98, CAL



O.D.O.T. DISTRICT 2 SURVEY OFFICE (USE ONLY)

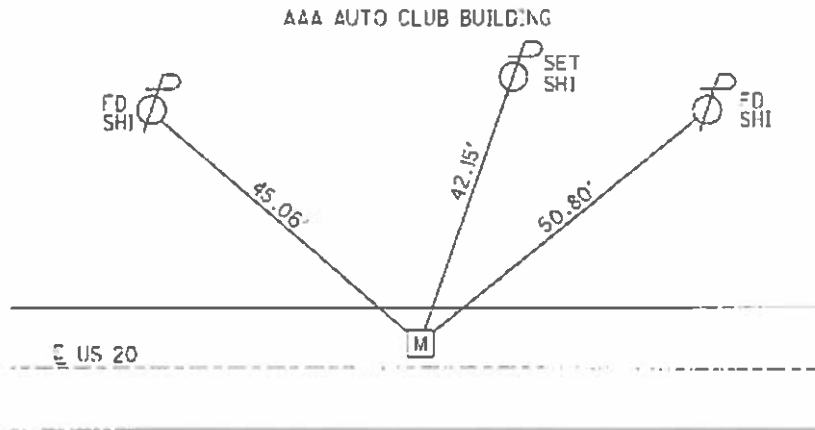
PERSONNEL \_\_\_\_\_ REFERENCE NO. 30 SHEET 6 OF 11  
 NOTES NUHFER DATE 8/13/01 ROUTE US 20  
 H.C. HUSS WEATHER HOT COUNTY LUCAS  
 R.C. MOSE TEMP. 86° TOWNSHIP SYLVANIA  
 SECTION 21  
 T 9 S R 6 E

TYPE MONUMENT 1" PIN MON. BOX  
 ON SURFACE - BELOW ON  
 LEFT - Q PAV'T - RIGHT 17.6'  
26' TO LT EDGE PAVEMENT  
 S.L.M. 449-15



GRID: NORTHING: 733548.19 EASTING: 1636687.43

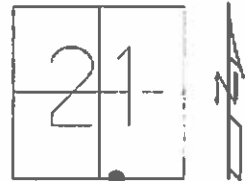
RECORD:  
 FD 1" PIN MON. BOX  
 7/08/98, CAL



**O.D.O.T. DISTRICT 2 SURVEY OFFICE (USE ONLY)**

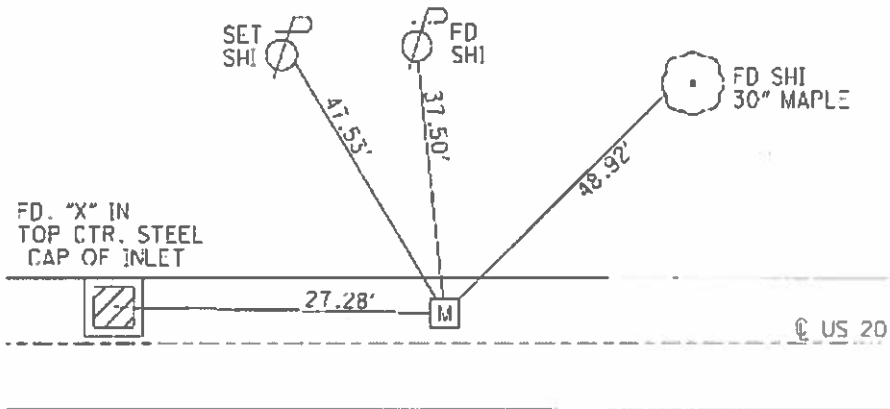
PERSONNEL \_\_\_\_\_ REFERENCE NO. 32 SHEET 8 OF 11  
 NOTES NUHFER DATE 8/14/07 ROUTE US 20  
 H.C. HUSS WEATHER CLOUDY COUNTY LUCAS  
 R.C. MOSE TEMP. 70° TOWNSHIP SYLVANIA  
 \_\_\_\_\_ SECTION 21  
 \_\_\_\_\_ T 9 S R 6 E

TYPE MONUMENT 1" IPIN MON. BOX  
 ON SURFACE - BELOW ON  
 LEFT - ☉ PAV'T - RIGHT 7.9'  
22.1' TO L EDGE PAVEMENT  
 S.L.M. 458+89



GRID: NORTHING: 733627.26 EASTING: 1637648.80

RECORD:  
 FD 1" IPIN MON. BOX  
 7/08/98, CAL



735427.07  
1639771.67

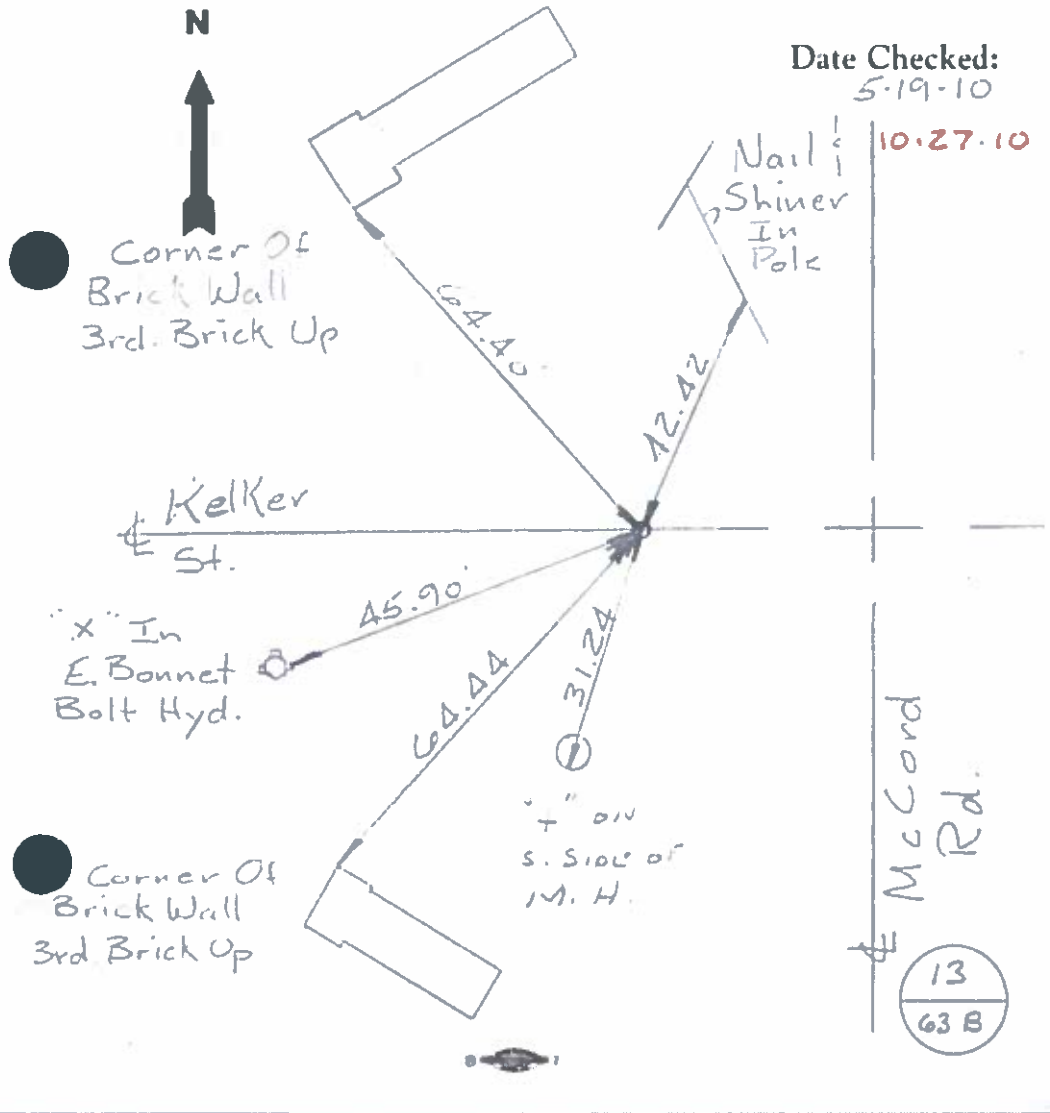
Town 9-S Range 6-E  
Ro.          Corner of Sections 21

Kind of Monument Conc. Mon. Remarks W/Bolt

FOUND Bolt in Conc BY Beers  
SET

N. & S. Road McCord Rd F.B.          P.         

E. & W. Road Kelker St. F.B.          P.         

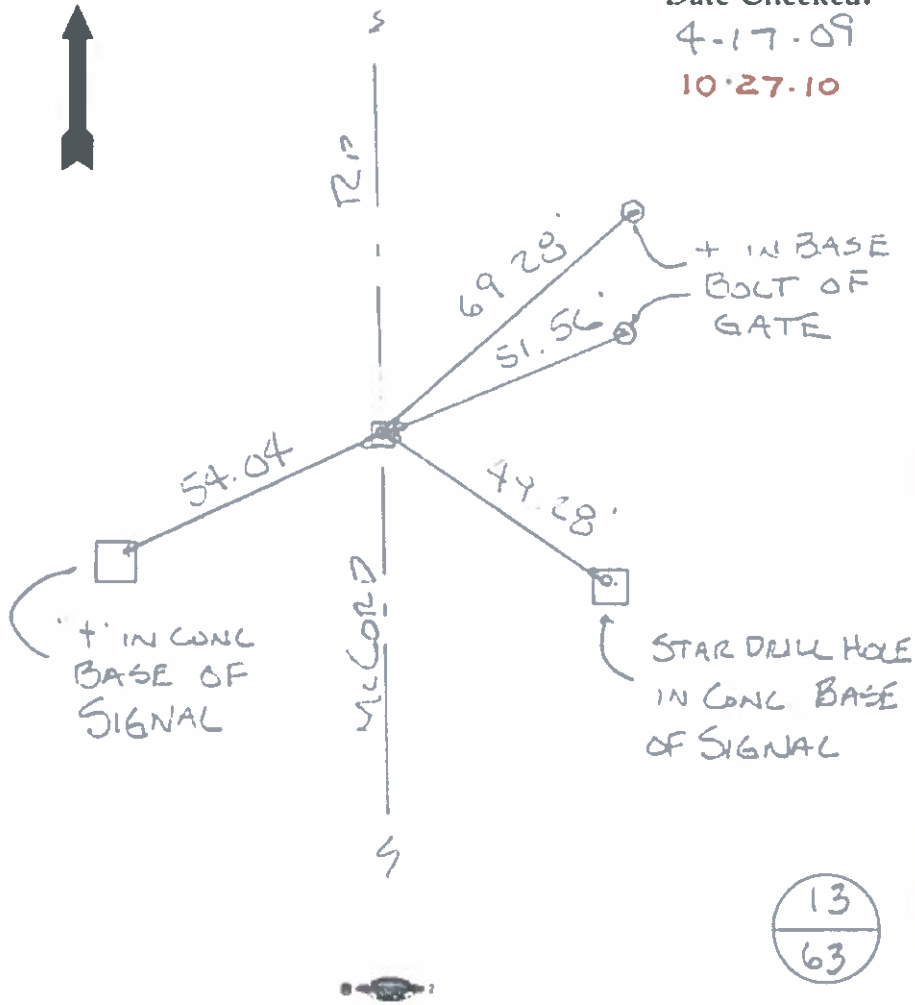


Town 9S Range 6E  
 1/4 Corner of Sections 21-22  
 Kind of Monument 4" DIA. ALUMINUM Remarks MON BOX  
@ SURFACE  
 FOUND ~ ALUM. MON. BY KAUFMAN  
 N. & S. Road MCCORD F.B. \_\_\_\_\_ P. \_\_\_\_\_  
 E. & W. Road 1/2 MI. + N. CENTRAL F.B. \_\_\_\_\_ P. \_\_\_\_\_

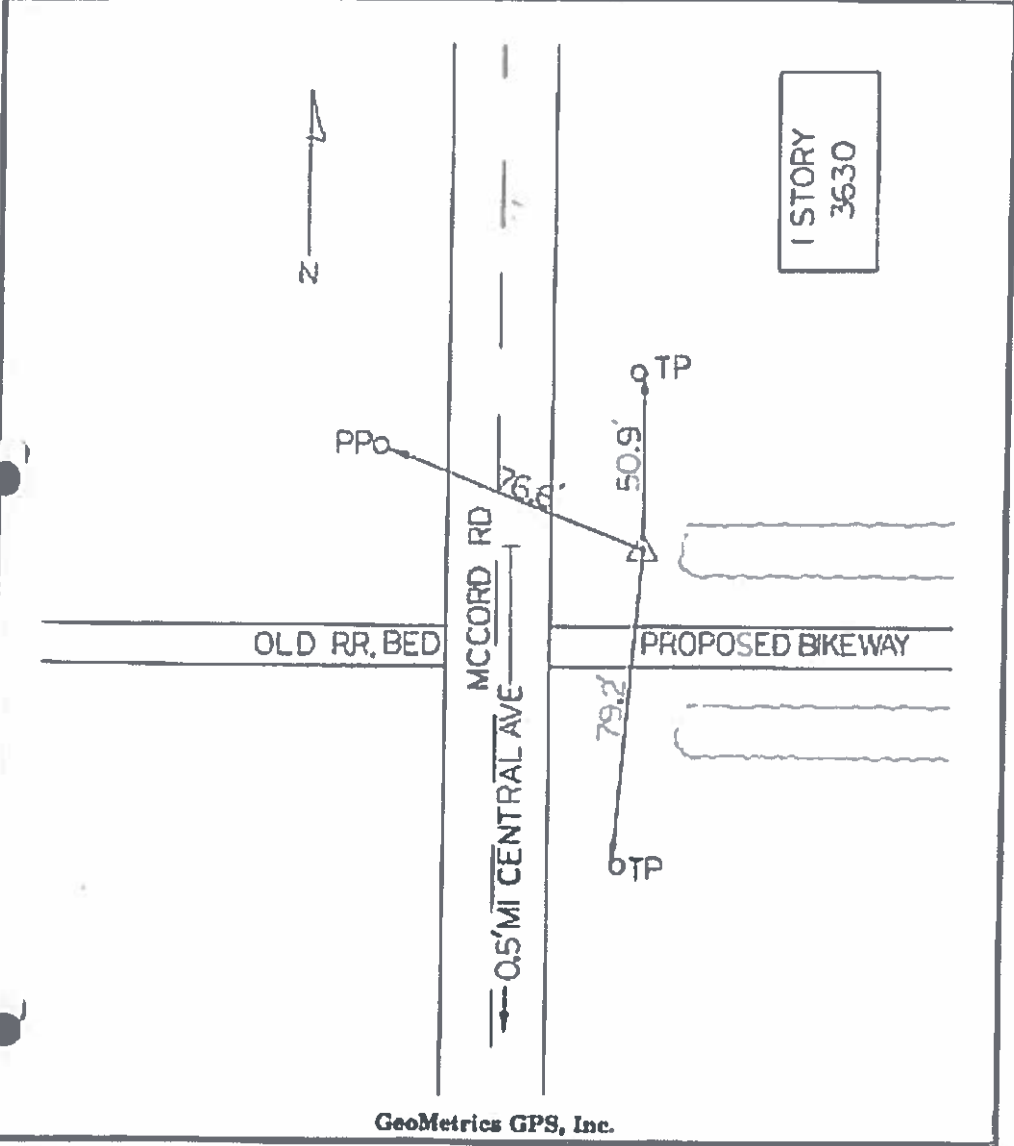
736 776 64  
 1639815.11



Date Checked:  
 4-17-09  
 10-27-10



DATE: August 1993	STATION	TYPE OF MARK: Brass Disk set in concrete
COUNTY: Lucas	LCB-114 GPS 0401	ESTABLISHED BY: GeoMetrics GPS, Inc.
TOWNSHIP: Sylvania		STAMPING ON MARK: BENCHMARK NO. 114



GeoMetrics GPS, Inc.

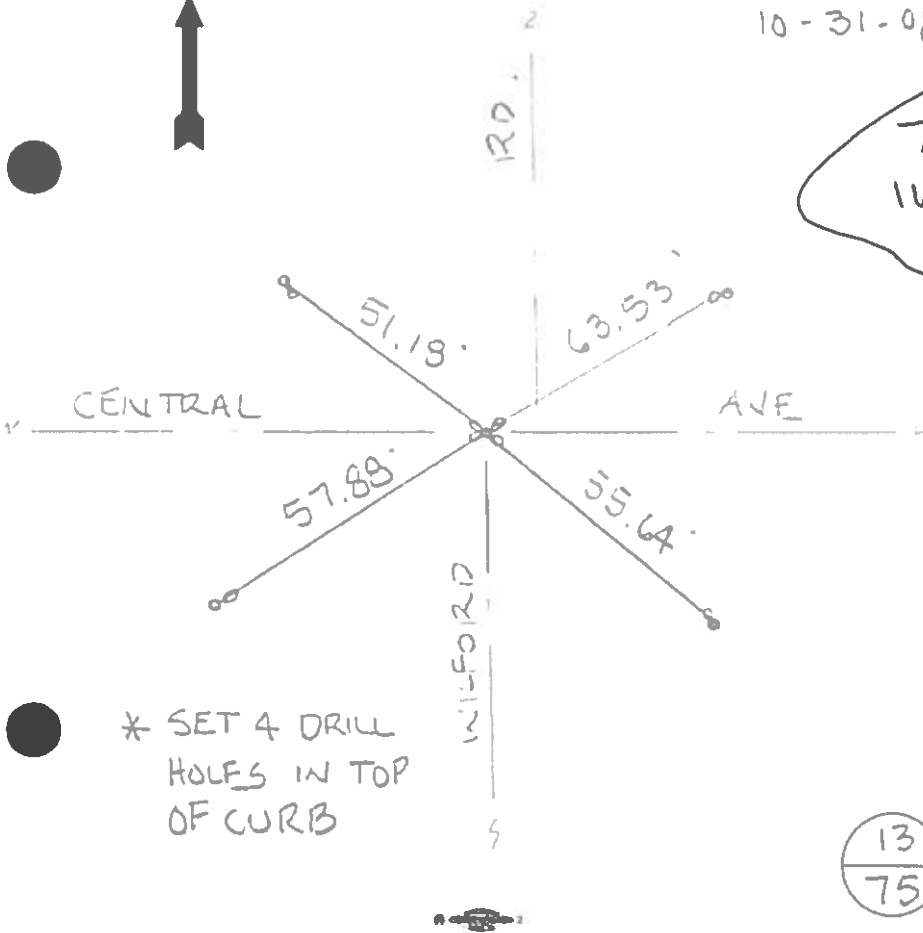
736779.26  
 1639846.72  
~~654.654~~  
 654.654  
 (calc)  
 check  
 cap for  
 elev

Town 95 Range 6E  
 W 1/16 Corner of Sections 22-27  
 Kind of Monument BRASS PLATE Remarks ON TOP OF  
3.5' STONE WALL  
 FOUND BR. PLATE By KAUFMAN  
~~SET~~  
 N. & S. Road WILFORD F.B.      P.       
 E. & W. Road CENTRAL F.B.      P.     



Date Checked:  
 10-31-08

734 142.63  
 1641 253.18

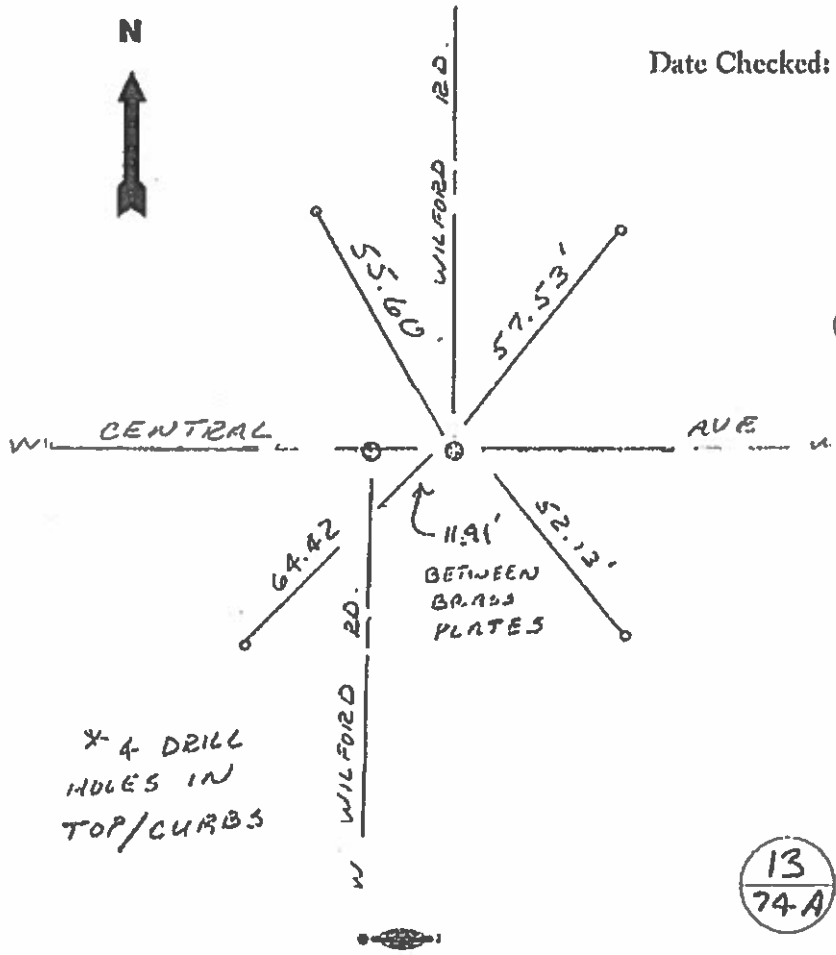


\* SET 4 DRILL  
 HOLES IN TOP  
 OF CURB

13  
 75



Town 9.5 Range 6 E  
2D Corner of Sections 22-27  
 Kind of Monument 3" BRASS PLATE Remarks ON TOP  
OF 3.5' BRUSHED CONCRETE WALL  
 FOUND BRASS PLATE  
~~SEE~~ 9-28-12 BY CORNELL  
 N. & X Road WILFORD F.B.      P.       
 E. & W. Road CENTRAL AVE F.B.      P.     



734143.17  
1641265.01

Town 95 Range 6E

RD. Corner of Sections 28

Kind of Monument CONC. Remarks w/LARGE

IRON PIN 0.2 Below Surf,  
FOUND 8-13-08 (in w. lane)  
~~SET~~ IRON PIN 4" BY CORNELL

N. & S. Road SEQUOIA F.B. P.

E. & W. Road MILROSE LN. F.B. P.

733257.88  
1638185.23

Date Checked:

